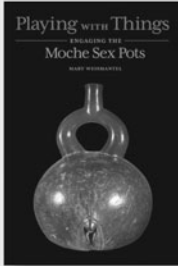


NEW FROM  
UNIVERSITY OF TEXAS PRESS

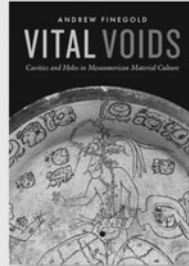


**Playing with Things**  
*Engaging the Moche Sex Pots*  
BY MARY WEISMANTEL

Challenging common approaches to archaeology and sexuality studies, this book explores, in part by physically interacting with

the artifacts, how Moche ceramics reveal ancient Indigenous ways of thinking about and experiencing sex.

\$29.95 paperback | August 2021

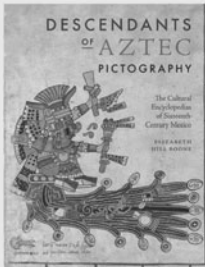


**Vital Voids**  
*Cavities and Holes in Mesoamerican Material Culture*  
BY ANDREW FINEGOLD

An innovative study argues that in Mesoamerica, holes were conceived and produced as conduits of

vital forces and material abundance, prerequisites for the emergence of life.

\$60.00 hardcover | May 2021

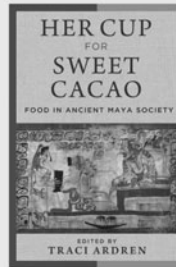


**Descendants of Aztec Pictography**  
*The Cultural Encyclopedias of Sixteenth-Century Mexico*  
BY ELIZABETH HILL BOONE

The first comprehensive

examination of Aztec pictorial encyclopedias and their creation, this book explores how indigenous artists documented their ancestral culture in these texts for those outside their community.

\$65.00 hardcover | January 2021



**Her Cup for Sweet Cacao**  
*Food in Ancient Maya Society*  
EDITED BY TRACI ARDREN

Presenting new data from leading scholars in the field, this collection uses evidence from

archaeology, hieroglyphic texts, chemical analyses, and art to explore the many ways food was integral to Classic Maya society.

\$60.00 hardcover | December 2020

Forthcoming

**Rethinking the Inka**  
*Community, Landscape, and Empire in the Southern Andes*

EDITED BY FRANCES M. HAYASHIDA, ANDRÉS TRONCOSO, AND DIEGO SALAZAR

NOVEMBER 2021

**Image Encounters**  
*Moche Murals and Archaic Art History*

BY LISA TREVER

JANUARY 2022



www.utexaspress.com

CAMBRIDGE

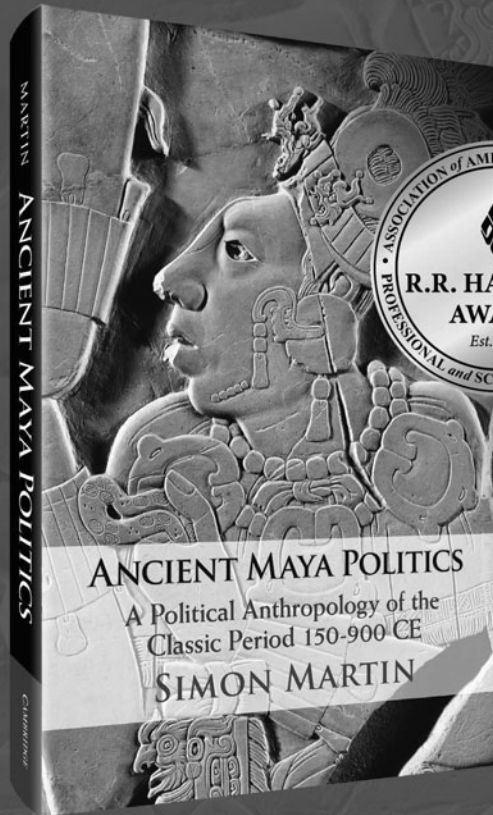
# 2021 R.R. Hawkins Award

## Ancient Maya Politics:

A Political Anthropology of the Classic Period

150 – 900 CE

Simon Martin



CAMBRIDGE  
UNIVERSITY PRESS  
[www.cambridge.org](http://www.cambridge.org)



# Archaeology

Books and Journals from  
Cambridge University Press

Cambridge publishes books and journals that cover research throughout world archaeology and across all periods.

Our list includes key handbooks and manuals in method, theory and scientific techniques; case studies of sites, surveys and excavations; comparative and interpretative works; scholarship on cultural resource management, and large scale, reliable reference works.

For further details visit:  
[cambridge.org/core-archaeology](https://www.cambridge.org/core-archaeology)

Cambridge  
Core



CAMBRIDGE  
UNIVERSITY PRESS

## NOTICE TO AUTHORS

*Latin American Antiquity* is a quarterly journal that publishes original papers on the archaeology, ethnohistory, and art history of Latin America and the Caribbean and all regions in the continental New World that are south of the current U.S.-Mexico border. The journal publishes ARTICLES, REPORTS, and COMMENTS in method and theory, field research, and analysis that use a Latin American database as defined above. Authors submit manuscripts to the editor for consideration as ARTICLES or REPORTS in English, Spanish, or Portuguese. *Latin American Antiquity* has a fixed limit of 10,000 words for ARTICLES and 3,000 words for REPORTS. Tables and illustrations should be limited to those that are appropriate and necessary. Authors are required to submit manuscripts electronically through Editorial Manager® (<http://www.editorialmanager.com/laq>). Detailed information on policy, style, and technical matters of manuscript preparation is given in English and in Spanish in the “Editorial Policy, Information for Authors, and Style Guide for *American Antiquity*, *Latin American Antiquity*, and *Advances in Archaeological Practice*,” which can be accessed at <https://www.saa.org/publications/latin-american-antiquity>. For additional information, updates, or clarification, consult the managing editor at the SAA office in Washington, DC.

## BOARD OF DIRECTORS OF THE SOCIETY FOR AMERICAN ARCHAEOLOGY

*President:* JOE E. WATKINS, PhD, RPA, Tucson, AZ, USA

*President-elect:* DEBORAH L. NICHOLS, PhD, RPA, Dartmouth College, Hanover, NH, USA

*Secretary:* TERESITA MAJEWSKI, RPA, Statistical Research Inc., Tucson, AZ, USA

*Secretary-elect:* KELLEY HAYS-GILPIN, RPA, Northern Arizona University, Flagstaff, AZ, USA

*Treasurer:* STEPHEN E. NASH, PhD, Denver Museum of Nature and Science, Denver, CO, USA

### *Board Members at-Large*

LEE RAINS CLAUSS, Highland, CA, USA

CYNTHIA HERHAHN, PhD, RPA, Albuquerque, NM, USA

HEATHER A. LAPHAM, PhD, RPA, UNC Chapel Hill, Chapel Hill, NC, USA

BONNIE L. PITBLADO, RPA, University of Oklahoma, Norman, OK, USA

SILVIA SALGADO, PhD, Universidad de Costa Rica, San José

LYNNE P. SULLIVAN, PhD, RPA, University of Tennessee, Knoxville, TN, USA

### *Ex-Officio Board Member*

OONA SCHMID, Executive Director, Society for American Archaeology, 1111 14th Street NW, Suite 800, Washington, DC 20005, USA



## ARTICLES

- 1 Ofrendas y rituales postclásicos dedicados a Chaahk en el sitio maya de Chilonché (Petén, Guatemala)  
*Cristina Vidal Lorenzo, Gaspar Muñoz Cosme y Patricia Horcajada Campos*
- 19 Aprovechamiento de animales en la puna transicional de Chaschuil (Catamarca, Argentina): Análisis zooarqueológico de dos ocupaciones del sitio San Francisco Inca (ca. siglos diez a quince DC)  
*Juan Pablo Miyano*
- 39 Sealing with Stone: Assessing an Assemblage of Lithic Debitage from a Funerary Context at the Lowland Maya City of Caracol, Belize  
*Lisa M. Johnson and Lucas R. Martindale Johnson*
- 57 A Macaw (*Ara sp.*) in a Preceramic Site from the Sabana de Bogotá, Colombia, Dated to the Ninth Millennium Cal BP  
*Catalina M. Zorro-Luján, Sandrine Grouard, Leslie F. Noè, Christine Lefevre, Antoine Zazzo, Carl Langebaek-Rueda, Germán Peña, and Gonzalo Correal-Urrego*
- 76 Monte Albán's Hidden Past: Buried Buildings and Sociopolitical Transformation  
*Marc N. Levine, Scott W. Hammerstedt, Amanda Regnier, and Alex E. Badillo*
- 99 Regional Integration and Ceramic Consumption in the Border Region of Bolivia and Argentina (ca. AD 1000–1450)  
*Ester Echenique, Axel E. Nielsen, Florencia Avila, and William Gilstrap*
- 120 The Low-Density Urban Systems of the Classic Period Maya and Izapa: Insights from Settlement Scaling Theory  
*Michael E. Smith, Scott G. Ortman, José Lobo, Claire E. Ebert, Amy E. Thompson, Keith M. Prufer, Rodrigo Liendo Stuardo, and Robert M. Rosenswig*
- 138 Inca Human Sacrifices on Misti Volcano (Peru)  
*Dagmara M. Socha, Johan Reinhard, and Ruddy Chávez Perea*
- 154 The River and the Sky: Astronomy and Topography in Caral Society, America's First Urban Centers  
*A. César González-García, Aldemar Crispín, Ruth Shady Solís, José Ricra, Felipe Criado-Boado, and Juan A. Belmonte*
- 173 Patterned Villagescapes and Road Networks in Ancient Southwestern Amazonia  
*Sanna Saunaluoma, Justin Moat, Francisco Pugliese, and Eduardo G. Neves*

## REPORTS

- 188 Burial 61 at El Perú-Waka's Structure M13-1  
*Olivia C. Navarro-Farr, Griselda Pérez Robles, Juan Carlos Pérez Calderón, Elsa Damaris Menéndez Bolaños, Erin E. Patterson, Keith Eppich, and Mary Kate Kelly*
- 201 An Inka Unku from Caleta Vitor Bay, Northern Chile  
*Tracy Martens, Jacqueline Correa-Lau, Calogero M. Santoro, Christopher Carter, and Judith Cameron*
- 209 Early Monumentality in the Belize River Valley: Excavations of a Preclassic E-Group at Cahal Pech, Belize  
*Claire E. Ebert, James McGee, and Jaime J. Awe*

---

*On the Cover:* Coat of arms depicting Topa Inka Yupanqui, eighteenth century (Dumbarton Oaks, Trustees for Harvard University, Rare Book Collection). From "An Inka Unku from Caleta Vitor Bay, Northern Chile," Tracy Martens et al., p. 207.

© The paper used in this publication meets the requirements of ANSI/NISO Z39.48-1992 (Permanence of Paper).

### Cambridge Core

For further information about this journal  
please go to the journal website at  
[cambridge.org/aaq](https://doi.org/10.1017/laq)



CAMBRIDGE  
UNIVERSITY PRESS