
INDEX TO ADVERTISERS

Bruker Nano GmbH	A3, A12
Diatome	Cover 3, A13
EDAX	A5, A14
Electron Microscopy Sciences, EMS	Cover 2, A15
Hempstead Halide	A11
Hitachi	Cover 4, A16
Tescan	A6, A17
ZEISS	A10, A18

Super Light Element Analysis



M4 TORNADO^{PLUS}

- High spatial resolution analysis from carbon to americium
- Up to 5 times faster than other Micro-XRF systems
- Aperture management system (AMS) for high depth of field
- Minimum sample exchange and setup time
- Optional He-purge system for analysis of sensitive samples

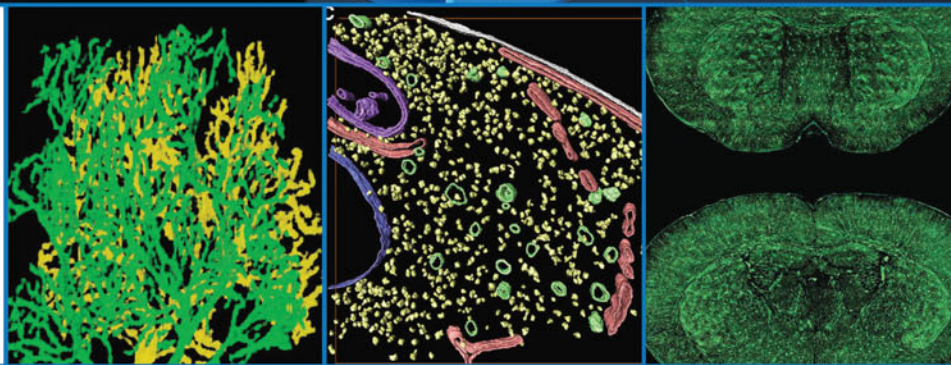


www.bruker.com/m4tornado-plus

DiATOME Diamond Knives



at the forefront of innovation



NEW! Ultra ATS The Ultra ATS Diamond knife is perfect for placing sections on Si wafers to view under the SEM. The knife comes in 3.0mm size with 35° angle.

**ultra 45° • cryo • histo • ultra 35°
histo jumbo • STATIC LINE II • cryo immuno
ultra sonic • ultra AFM & cryo AFM
trimtool 20, 45, and 90**

www.emsdiasum.com

DiATOME U.S.

P.O. Box 550 • 1560 Industry Rd. • Hatfield, PA 19440
Tel: (215) 412-8390 • Fax: (215) 412-8450
email: info@emsdiasum.com or stacie@ems-secure.com

The velocity for world-class results



Introducing the World's Fastest EBSD Camera

Powered by a CMOS sensor, the EDAX Velocity™ EBSD Camera Series offers high-speed EBSD mapping with the highest indexing performance for all materials. The cameras combine fast acquisition with high sensitivity and low noise performance for optimal data collection and quality results.

- **Velocity™ Plus** up to **3,000** indexed points per second
- **Velocity™ Super** up to **4,500** indexed points per second
- CMOS low-noise sensor
- High-speed simultaneous EDS-EBSD collection
- 120 x 120 pixel images at high speeds
- Accurate and precise data on real-world samples including both deformed and lightweight materials

For more information about the Velocity™ EBSD Camera Series please visit edax.com/velocity

RAISE YOUR CAREER TO THE

NEXT level

IN 2020...

EMS Microscopy Academy

NEW WORKSHOPS ARE
FILLING UP FOR 2020.

The EMS Microscopy Academy is located minutes from Philadelphia, next to the Electron Microscopy Sciences headquarters in Hatfield, PA. We have many offerings led by our certified faculty:

- Educational Workshops • Corporate Training
- Group Training • Private Training
- Equipment Demonstrations

Aurion Immunogold Silver Staining

Biological SEM

Biological TEM

Materials Ultramicrotomy

Cryosectioning/Immunogold

Automated and Rapid Processing
for Electron Microscopy

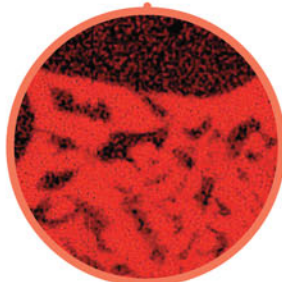
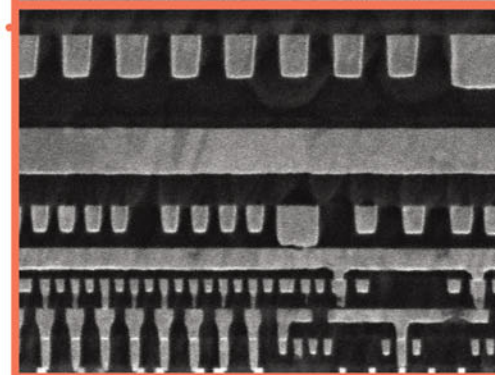
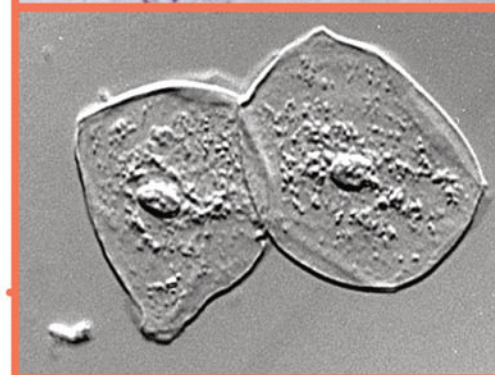
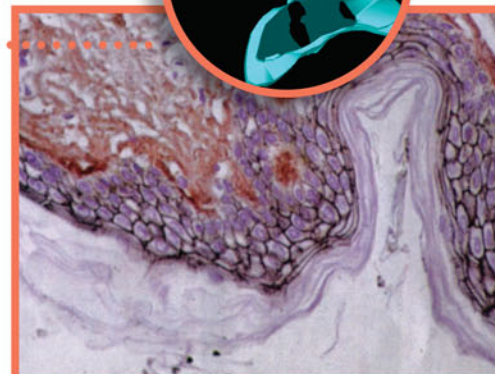
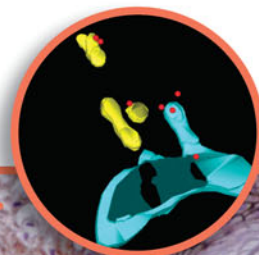
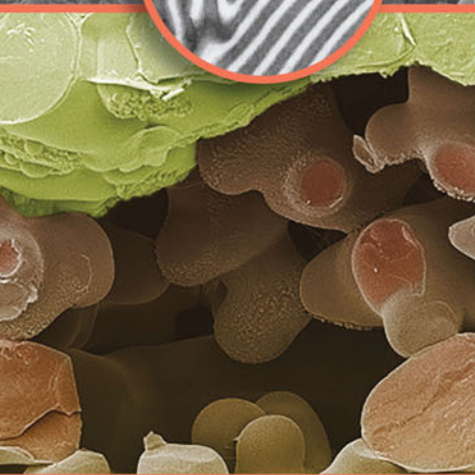
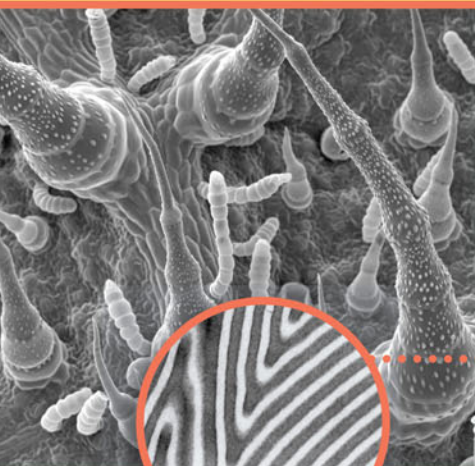
Introduction to Microscopy
Techniques

Cryo SEM

Microscopy: The Complete Image

Sample Preparation for
Semiconductor Devices

X-Ray Microanalysis



SIGN UP FOR A CLASS
TODAY, OR SUGGEST
A COURSE THAT
YOU WANT...

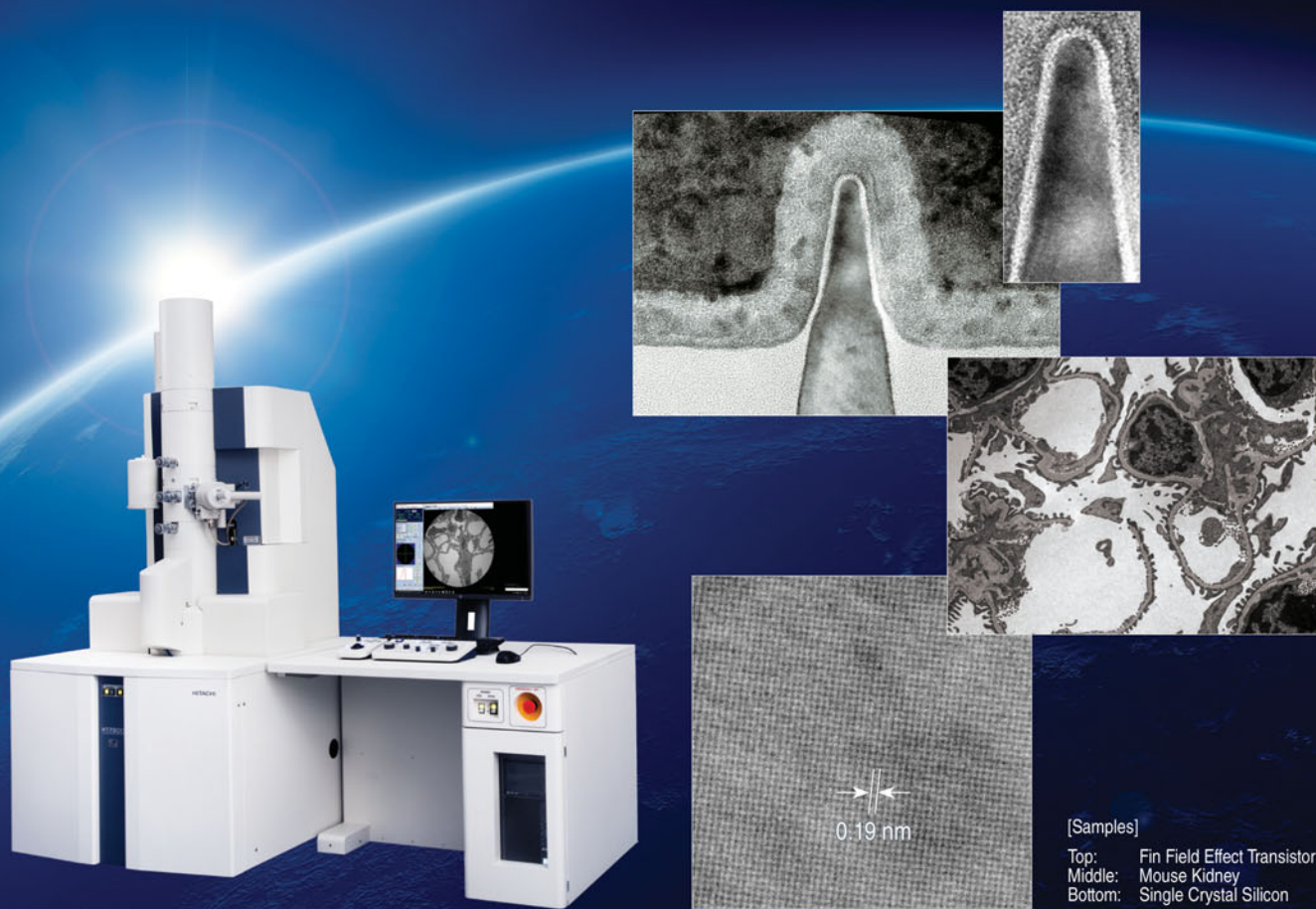


www.emsmicroscopyacademy.com

Electron Microscopy Sciences 1560 Industry Road, Hatfield, PA 19440
phone: 215-412-8400 email: info@emsdiasum.com www.emsdiasum.com

The NEXT Generation of 120 kV TEM

Innovation, Performance, and Reliability—The Hitachi *HT7800* Series




Hitachi's advanced electron optics and dual-mode lens technology redefine the boundaries of 120 kV TEM performance. With ≤ 0.19 nm on-axis resolution, the highest contrast in its class, and diverse analytical capabilities for Materials Science and Life Science fields, the *HT7800* Series provides a complete solution for all your TEM imaging needs.

For more details, contact us at: microscopy@hitachi-hta.com

Innovation ♦ Synergy ♦ Solutions

A Plasma FIB-SEM platform for deep sectioning and the highest resolution end-pointing for package level failure analysis



200 μm

1 mm cross-section of package substrate

TESCAN SOLARIS X

- ✓ Curtaining-free large-area cross-sectioning for physical failure analysis of advanced packaging technologies.
- ✓ Prepare large area FIB-cross-sections up to 1 mm wide.
- ✓ Obtain low noise, high resolution image at low keVs in short acquisition time at FIB-SEM coincidence with the sample tilted.
- ✓ Live SEM-monitoring during FIB milling for precise end-pointing.
- ✓ Observe the most beam-sensitive materials using low keVs ultra-high resolution for surface sensitivity and high material contrast.
- ✓ Effective techniques and recipes for fast and artefact-free cross-sectioning of composite samples (OLED and TFT displays, MEMS devices, isolation dielectrics) at high currents.
- ✓ Essence™ easy-to-use modular user interface

TESCAN SOLARIS X is based on the S9000 platform.



For more information visit

www.tescan.com

Gain unique insights for your scientific discoveries.



ZEISS Microscopes for Life Sciences

Choose the ideal imaging technologies for your scientific question. The unique ZEISS portfolio of light, electron, ion and X-ray microscopes lets you combine complementary views to gain new insights into your sample's biology.

zeiss.com/life-sciences



Seeing beyond



Statement of Ownership, Management, and Circulation
POSTAL SERVICE® (All Periodicals Publications Except Requester Publications)

1. Publication Title MICROSCOPY AND MICROANALYSIS	2. Publication Number 021 - 917	3. Filing Date 10/1/2019
4. Issue Frequency FEBRUARY, APRIL, JUNE, AUGUST, OCTOBER, DECEMBER	5. Number of Issues Published Annually 6	6. Annual Subscription Price \$2364
7. Complete Mailing Address of Known Office of Publication (Not printer) (Street, city, county, state, and ZIP+4®) Cambridge University Press 1 Liberty Plaza New York, NY 10006		Contact Person Nina Iammattio Telephone (include area code) 2123345000
8. Complete Mailing Address of Headquarters or General Business Office of Publisher (Not printer) Cambridge University Press University Printing House, Shaftesbury Road Cambridge CB2 8BS		
9. Full Names and Complete Mailing Addresses of Publisher, Editor, and Managing Editor (Do not leave blank)		
Publisher (Name and complete mailing address) Cambridge University Press 1 Liberty Plaza New York, NY 10006		
Editor (Name and complete mailing address) John Mansfield 4304 Spring Lake Blvd. Ann Arbor, MI 48108-9657		
Managing Editor (Name and complete mailing address)		

10. Owner (Do not leave blank. If the publication is owned by a corporation, give the name and address of the corporation immediately followed by the names and addresses of all stockholders owning or holding 1 percent or more of the total amount of stock. If not owned by a corporation, give the names and addresses of the individual owners. If owned by a partnership or other unincorporated firm, give its name and address as well as those of each individual owner. If the publication is published by a nonprofit organization, give its name and address.)

Full Name MICROSCOPY SOCIETY OF AMERICA	Complete Mailing Address 11130 SUNRISE VALLEY DR SUITE 350 RESTON, VA 20191
--------------------------------------------	--------------------------------------------------------------------------------------

11. Known Bondholders, Mortgagees, and Other Security Holders Owning or Holding 1 Percent or More of Total Amount of Bonds, Mortgages, or Other Securities. If none, check box None

Full Name	Complete Mailing Address

12. Tax Status (For completion by nonprofit organizations authorized to mail at nonprofit rates) (Check one)
 The purpose, function, and nonprofit status of this organization and the exempt status for federal income tax purposes:
 Has Not Changed During Preceding 12 Months
 Has Changed During Preceding 12 Months (Publisher must submit explanation of change with this statement)

13. Publication Title MICROSCOPY AND MICROANALYSIS	14. Issue Date for Circulation Data Below AUGUST 2019
-------------------------------------------------------	----------------------------------------------------------

15. Extent and Nature of Circulation		Average No. Copies Each Issue During Preceding 12 Months	No. Copies of Single Issue Published Nearest to Filing Date
a. Total Number of Copies (Net press run)		1730	1428
b. Paid Circulation (By Mail and Outside the Mail)	(1) Mailed Outside-County Paid Subscriptions Stated on PS Form 3541 (include paid distribution above nominal rate, advertiser's proof copies, and exchange copies)	1176	968
	(2) Mailed In-County Paid Subscriptions Stated on PS Form 3541 (include paid distribution above nominal rate, advertiser's proof copies, and exchange copies)	0	0
	(3) Paid Distribution Outside the Mails Including Sales Through Dealers and Carriers, Street Vendors, Counter Sales, and Other Paid Distribution Outside USPS®	238	322
	(4) Paid Distribution by Other Classes of Mail Through the USPS (e.g., First-Class Mail®)	0	0
c. Total Paid Distribution (Sum of 15b (1), (2), (3), and (4))		1414	1290
d. Free or Nominal Rate Distribution (By Mail and Outside the Mail)	(1) Free or Nominal Rate Outside-County Copies included on PS Form 3541	0	0
	(2) Free or Nominal Rate In-County Copies included on PS Form 3541	0	0
	(3) Free or Nominal Rate Copies Mailed at Other Classes Through the USPS (e.g., First-Class Mail)	0	0
	(4) Free or Nominal Rate Distribution Outside the Mail (Carriers or other means)	2	2
e. Total Free or Nominal Rate Distribution (Sum of 15d (1), (2), (3) and (4))		2	2
f. Total Distribution (Sum of 15c and 15e)		1416	1292
g. Copies not Distributed (See instructions to Publishers #4 (page #3))		314	136
h. Total (Sum of 15f and g)		1730	1428
i. Percent Paid (15c divided by 15f times 100)		99.86%	99.84%

16. Electronic Copy Circulation		Average No. Copies Each Issue During Preceding 12 Months	No. Copies of Single Issue Published Nearest to Filing Date
a. Paid Electronic Copies			
b. Total Paid Print Copies (Line 15c) + Paid Electronic Copies (Line 16a)			
c. Total Print Distribution (Line 15f) + Paid Electronic Copies (Line 16a)			
d. Percent Paid (Both Print & Electronic Copies) (16b divided by 16c × 100)			

I certify that 50% of all my distributed copies (electronic and print) are paid above a nominal price.

17. Publication of Statement of Ownership
 If the publication is a general publication, publication of this statement is required. Will be printed in the October issue of this publication. Publication not required.

18. Signature and Title of Editor, Publisher, Business Manager, or Owner

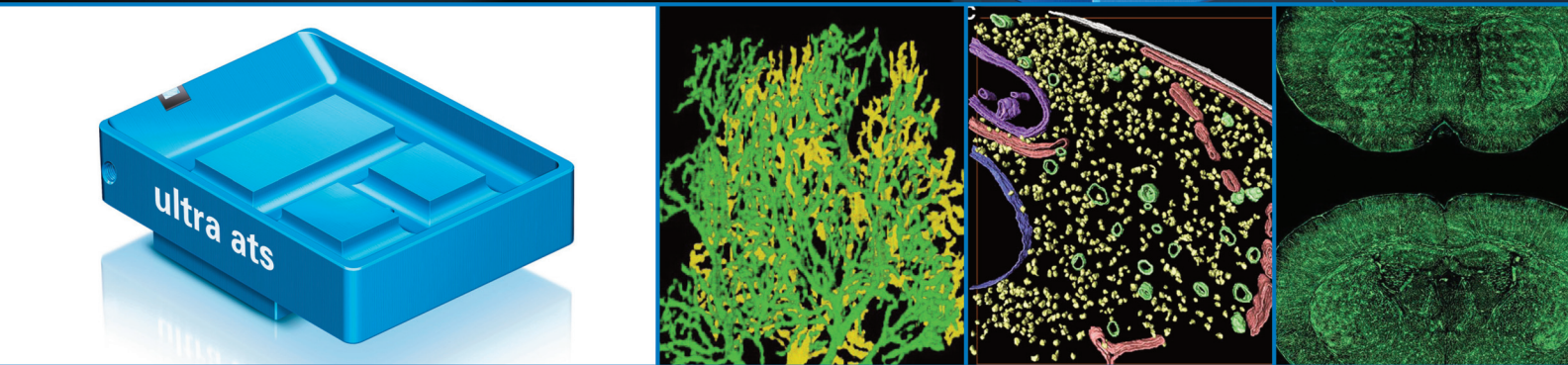
 Date: 10/1/2019

I certify that all information furnished on this form is true and complete. I understand that anyone who furnishes false or misleading information on this form or who omits material or information requested on the form may be subject to criminal sanctions (including fines and imprisonment) and/or civil sanctions (including civil penalties).

DiATOME Diamond Knives



at the forefront of innovation



NEW! Ultra ATS The Ultra ATS Diamond knife is perfect for placing sections on Si wafers to view under the SEM. The knife comes in 3.0mm size with 35° angle.

**ultra 45° • cryo • histo • ultra 35°
histo jumbo • STATIC LINE II • cryo immuno
ultra sonic • ultra AFM & cryo AFM
trimtool 20, 45, and 90**

www.emsdiasum.com

DiATOME U.S.

P.O. Box 550 • 1560 Industry Rd. • Hatfield, PA 19440
Tel: (215) 412-8390 • Fax: (215) 412-8450
email: info@emsdiasum.com or stacie@ems-secure.com

The Ultimate Solution for Efficiency

The All-New SU7000 Ultra-High Resolution Variable-Pressure Analytical Schottky FE-SEM



High-Resolution Imaging

- 0.9 nm resolution at 1 keV
- 0.8 nm resolution at 15 keV

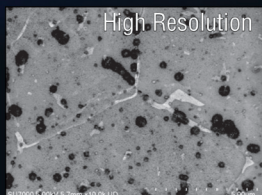
Enhanced Versatility

- Large chamber handles samples 200 mm Φ or 80 mm tall
- 18 accessory ports for analytical options

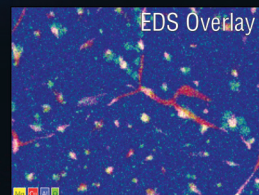
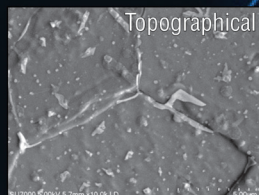
Fast Data Collection

- 200 nA beam current
- Synchronized working distance for imaging and analysis
- Fully integrated sample navigation camera
- Simultaneous 6-signal acquisition

All data collected **simultaneously at 6 mm WD!**



Sample: Heat-treated aluminum alloy



Innovation ♦ Synergy ♦ Solutions



Science for a better tomorrow

Hitachi High Technologies America, Inc.

www.hitachi-hightech.com/us Tel. 800-253-3053 E-mail: microscopy@hitachi-hita.com