

THE JOURNAL OF AGRICULTURAL SCIENCE

EDITED BY

G. D. H. BELL, C.B.E., PH.D., F.R.S., Plant Breeding Institute, Cambridge

K. L. BLAXTER, PH.D., N.D.A. (HONS.), D.SC., F.R.S.E., F.R.S.,
Rowett Research Institute, Bucksburn, Aberdeen

G. W. COOKE, PH.D., F.R.I.C., Rothamsted Experimental Station, Harpenden

JOHN HAMMOND, Jr., M.A., School of Agriculture, Cambridge

PROF. SIR J. B. HUTCHINSON, C.M.G., SC.D., F.R.S., School of Agriculture,
Cambridge

H. L. PENMAN, O.B.E., PH.D., F.R.S., Rothamsted Experimental Station, Harpenden

H. H. ROGERS, B.SC., DIP.AG.SCI., Plant Breeding Institute, Cambridge

PROF. E. W. RUSSELL, C.M.G., PH.D., F.INST.P., Department of Soil Science,
University of Reading

F. YATES, C.B.E., SC.D., F.R.S., Rothamsted Experimental Station, Harpenden



CAMBRIDGE UNIVERSITY PRESS

BENTLEY HOUSE, 200 EUSTON ROAD, LONDON, N.W. 1

AMERICAN BRANCH: 32 EAST 57TH STREET, NEW YORK, N.Y. 10022

Price 35s. net
(U.S.A. \$5.50)

INSTRUCTIONS TO AUTHORS

Papers intended for publication should be submitted to Dr G. D. H. Bell, C.B.E., F.R.S., Plant Breeding Institute, Cambridge, or to one of the Associate Editors. It must be understood that, if accepted by the Editorial Board, the paper will not be published elsewhere in the same form.

MANUSCRIPTS. Papers, written in English, are accepted from any country and should be typed in double-spacing on one side of the paper with a margin at least 4 cm wide on the left-hand side. Authors should instruct typists on the style of manuscript required. A top copy and one carbon copy should be submitted.

TABLES must be self-explanatory. They should be typed on separate sheets, numbered consecutively and carry an appropriate title. Wherever possible, tables should be arranged so that they can be printed in the normal orientation of the text and without the need for rules.

LINE DRAWINGS (with photocopies) should be 25 cm. wide and drawn in black waterproof ink on Bristol board, graph paper with blue lines or tracing paper. Legends should be typed on a separate copy and numbering inserted lightly and clearly in soft pencil on the drawing. Tables and figures should not reproduce the same data.

The approximate position of tables and figures should be noted in the text.

PLATES should make a definite contribution to the value of the paper and the number submitted should be kept to a minimum. They should be good quality, unmounted, glossy prints and be lightly numbered in pencil on the reverse side. If several, or coloured, plates are submitted the author may be asked to contribute to the cost of reproducing them.

TITLE. The title must be specific and suitable for indexing by the mechanical methods now being employed. The full name and address of the institution in which the research has been carried out should be stated. Change of address may be given as a footnote. A short title, not exceeding 50 characters, should be provided for the running headlines.

STYLE. Experimental details and results should be recorded in the past tense and there should be no unnecessary repetition or loose phrases. Manuscripts are likely to be returned for modification if the presentation is not clear and precise.

LAYOUT. Authors are recommended to study '*General Notes on the Preparation of Scientific Papers*'

(Royal Society, London, 2nd edn., 1965). The Editorial Board do not insist upon a rigid format but it is usually convenient to divide the paper into sections, e.g. Introduction, Materials and Methods, Results and Discussion. An excess of headings and sub-headings should be avoided. A Summary should always be included.

Authors are advised to note the following points: a detailed review of literature is not necessary; relevant details should be given of the plant or animal material, the experimental design and chemical or other techniques employed; mean results with their relevant standard errors should be presented rather than detailed data; the statistical methods used should be clearly stated; the discussion should relate the author's experiments to other work on the subject and give the author's conclusions; the summary should be factual and suitable for use in abstracting journals. Footnotes should be avoided.

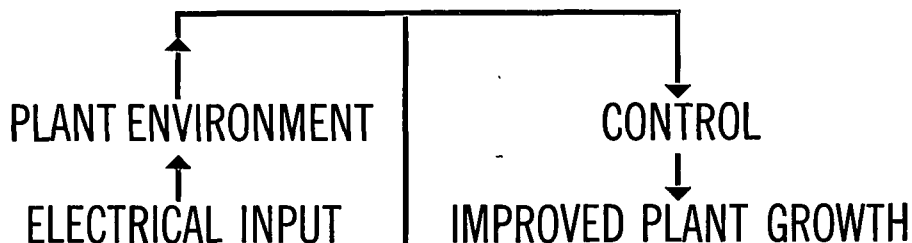
REFERENCES. The bibliography must be given in the form—Surname of authors, initials, year of publication (in parentheses), title of paper, name of journal (abbreviated according to the *World List of Scientific Periodicals*, 4th edn, Butterworths, London), volume and pages of reference. References should be in alphabetical order. In the text a reference should be quoted by the author's name and date (in parentheses). Where there are more than two authors, the initial reference in the text should include the names of all authors but subsequent citations, should be in the form—first author followed by *et al.* Authors should check that all references in the text appear at the end of the paper and vice versa, and that names and dates correspond in the two places.

PROOF CORRECTION. Standard proof correction marks (British Standard 1219) should be made as legibly as possible in ink, not pencil. Directions to the printer which are not to be set up in type should be encircled. Captions to illustrations and all references should be checked. Queries marked by the printer should be answered. Proofs are provided in order that authors can check the correctness of the type-setting—excessive alterations may be charged to the author.

OFFPRINTS. Contributors will receive 25 copies of their papers free and can order others when they receive the proofs.

Failure to comply with the 'Instructions to Authors' may delay publication.

PLANT PHYSIOLOGISTS



We want to recruit two — good ones!

Salary on appointment within an overall range of £1,000 — £3,000

Applications please, or requests for further information to D. C. Page, Head of Personnel Services, Electricity Council, Research Centre, Capenhurst, Nr. Chester. Quoting ref No. JAS /60.

ELECTRICITY
COUNCIL
EC
RESEARCH
CENTRE

ANIMAL PRODUCTION

JOURNAL OF THE BRITISH SOCIETY OF ANIMAL PRODUCTION

Contents of Volume 9, Part 2, May 1967

STOBO, ROY and GASTON. The ability of the calf weaned at five weeks of age to utilize urea given as a supplement to a low-protein concentrate.

RICKABY. Protein levels in practical diets for bacon pigs.

TOPPS and ELLIOTT. Partition of nitrogen in the urine of African sheep given a variety of low-protein diets.

LANGLANDS. Some sources of error when sampling oesophageally fistulated sheep at pasture.

WIENER. Body size, fleece weight and maternal performance of five breeds of sheep kept in one environment.

HOLME and COEY. The effects of environmental temperature and method of feeding on the performance and carcass composition of bacon pigs.

KAY, MACLEOD, MCKIDDIE and PHILIP. The effect of replacement of fish meal with either urea or ammonium acetate on growth rate and nitrogen retention in calves fed *ad libitum*.

HINTZ and HEITMAN. Sewage-grown algae as a protein supplement for swine.

EADIE, HOBSON and MANN. Comparisons between the rumen content of barley-fed steers and that of young calves also fed on a high concentrate ration.

VEUM, POND and VAN VLECK. Correlations between sow milk production and composition and growth and haemoglobin of their pigs.

SMITH, TONKS and LAWRENCE. Back rasher ratios as predictors of lean percentage of pigs of bacon weight.

LODGE. Sorghum for barley in diets for fattening pigs.

GUNN. Hill ewe mortality.

PROCEEDINGS OF THE BRITISH SOCIETY OF ANIMAL PRODUCTION.

The Journal is published quarterly in February, May, August and November. The annual subscription rate is 90s. (U.S.A. \$14.00). Single copy 25s. (U.S.A. \$4.00). Orders and subscriptions may be sent to any bookseller or direct to:

OLIVER AND BOYD LTD.

Tweeddale Court, 14 High Street, Edinburgh 1

EXPERIMENTAL AGRICULTURE

Contents of Volume 3, No. 2. April 1967

- H. C. Pereira, P. H. Hosegood and M. Dagg.** Effects of Tied Ridges, Terraces and Grass Leys on a Lateritic Soil in Kenya.
- E. A. Weiss.** Effects of Nitrogen, Phosphate and Time of Cutting on Green Material and Oil Yields from Geranium (*Pelargonium* Hybrid) in West Kenya.
- J. J. Hardon and P. D. Turner.** Observations on Natural Pollination in Commercial Plantings of Oil Palm (*Elaeis Guineensis*) in Malaya.
- G. C. Taneja and B. M. Fuladi.** The Response of Sheep to a thermal Burden Induced by Exercise.
- B. A. C. Enyi.** Effects of Age on Establishment and Yield of Cocoyam Setts (*Xanthosoma Sagittifolium* Schott).
- P. D. Turner.** Evaluation of Fungicides for Use against *Marasmius Palmivorus* on Oil Palms.
- Abdalla A. Abdulla.** Effect of Temperature and Photoperiod on bulbing of the Common Onion (*Allium Cepa* L.) Under Arid Tropical Conditions of the Sudan.
- J. H. I'ons.** The Effects of Fertilizers on Subtropical Hyparrhenia Veld in Swaziland.
- C. Thakur and S. K. Chowdhury.** Summer Cropping Groundnuts in North Bihar.
- J. B. Williams.** A Device for Calculating Available-Water.
- P. J. Salter.** Methods of Determining the Moisture Characteristics of Soils.

Book Reviews:

- Sand and Water Culture Methods Used in the Study of Plant Nutrition. E. J. Hewitt.
- Sample Survey and Collection of Coconut Germ Plasm in the Pacific Islands. R. A. Whitehead.
- Animal Nutrition. P. McDonald, R. A. Edwards and J. F. D. Greenhalgh.
- Arid Lands: A Geographical Appraisal. E. S. Hills.
- The Locust Handbook.

Experimental Agriculture is a quarterly journal published by Cambridge University Press. It is the successor to *The Empire Journal of Experimental Agriculture*.

The subscription price is £3. 15s. (U.S.A. \$13.50) including postage; single parts are available at £1. 5s. each (U.S.A. \$4.50). Orders may be sent to any bookseller or subscription agent, or direct to Cambridge University Press.

CAMBRIDGE UNIVERSITY PRESS

Bentley House, 200 Euston Road, London, N.W. 1

American Branch: 32 East 57th Street, New York, N.Y. 10022, U.S.A.



Stainless Steel

MICRO HAMMER MILL

pulverizes almost anything—whether hay, cotton, wool or rock samples.
Only two minutes needed to pulverize most samples. Even a few grammes can be ground; maximum charge 120 c.c. Dust-proof closure. Hardened stainless steel grinding mechanism. Slide-in screens for particle size adjustment. Variable speed motor for better grinding control. Price, complete as shown; £78.
For full details please quote AS/63/M.H.



GLEN CRESTON

The Red House, 37 The Broadway, Stanmore, Middlesex.
Telephone: 01-954 4218

FULL PARTICULARS OF THE

JOURNALS

PUBLISHED BY THE

CAMBRIDGE
UNIVERSITY PRESS

MAY BE HAD FROM

THE MANAGER
CAMBRIDGE UNIVERSITY PRESS
BENTLEY HOUSE
200 EUSTON ROAD
LONDON, N.W.1

CROP SCIENCE

Crop breeders, plant geneticists and physiologists, and workers in related areas will find *Crop Science* a source of valuable articles in their branches of science. This bimonthly journal carries reports of research in the genetics, physiology, ecology, breeding and management of field crops, turf-grasses, pastures and ranges, and in seed technology. It is published by the Crop Science Society of America.

\$16.00 per year in U.S. and Canada.
\$17.00 per year elsewhere.

Crop Science Society of America
677 S. Segoe Rd,
Madison, Wisconsin, U.S.A., 53711

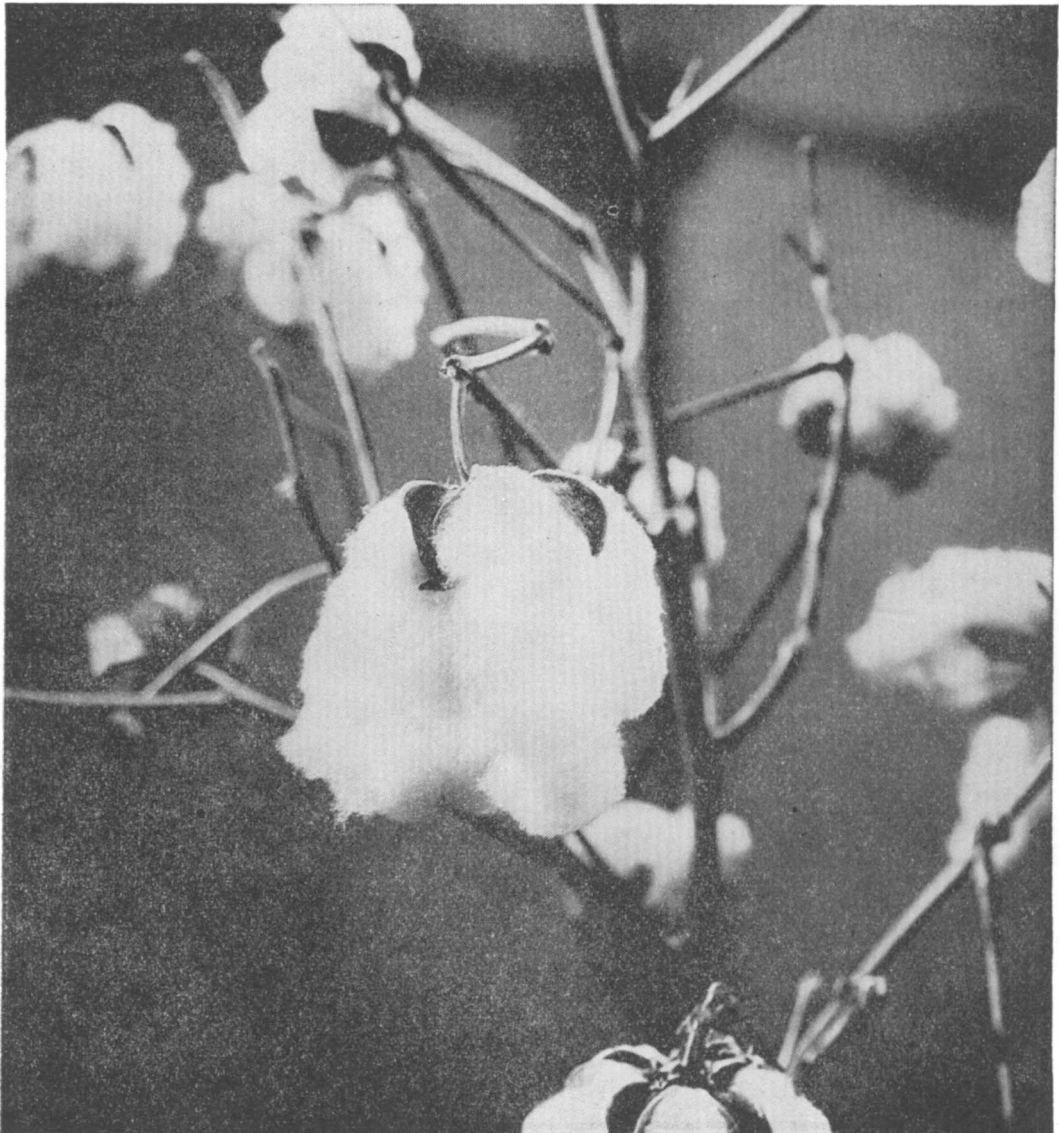


Phosdrin gives you clean crops-fast

If you sometimes get the feeling that every insect in the world is munching away at your crops, they need Phosdrin. Phosdrin cleans any insect pest from any crop within minutes. And it breaks down so fast that in a matter of hours your crop is absolutely free from insect pests, thoroughly clean for the consumer.

Versatile Phosdrin can also be added to any other organo-phosphorus insecticide to give a dynamic close-to-harvest boost. For further information about Shell's remarkable Phosdrin, contact your Shell company or Shell chemicals agent.





Endrin protects cotton from every cotton-picking thing... except people

Endrin is an efficient, all-purpose cotton insecticide that protects plants from ravaging insects throughout the growing season. It is highly effective against hard-to-kill pests like the boll-worm as well as other boll-damaging, leaf-eating and sap-sucking pests. Endrin also gives excellent pest control on maize, sugar-cane, rice, tobacco and coffee.

Endrin, aldrin and dieldrin are complementary to each other and stable in the presence of other chemicals. They neither affect germination nor cause taint. Furthermore, their use according to recommendation is completely safe both to applicators and consumers. All three are available as materials for further formulation and in forms suitable for the grower.

For full details of approved uses and advice on application consult your Shell company or Shell chemicals agent.

