

Latitudinal patterns in phylogenetic and functional diversity of Diptera in temperate bogs

Amélie Grégoire Taillefer¹  and Terry A. Wheeler

Abstract—Conservation of biodiversity is growing in interest, and wetlands are disappearing at an alarming rate, so understanding how communities are assembled and how interactions among species and ecosystems influence evolution is critical to the management of threatened habitats. We compared diversity and assemblages of peatland Diptera within and between ecoregions in Québec, Canada. We then determined the phylogenetic structure of peatland Diptera communities and how the structure differed with spatial scale (trap, site, ecoregion). Finally, we tested alpha and beta diversity along environmental and spatial gradients to determine which processes influence Diptera communities and diversity. Bogs across the three ecoregions support similar abundance, species richness, and functional diversity. We found that the major forces structuring Diptera assemblages in bogs across Québec are stochastic processes such as dispersal limitations. However, those random patterns change to clustering when anthropogenic disturbances modify the landscape. Assembly rules are mostly dictated by patch and landscape parameters specific to each ecoregion affecting dispersal and establishment between sites. Conservation of mobile organisms in habitats such as bogs will depend on conservation plans focusing on both patch quality and surrounding landscape, and that different conservation strategies need to be applied in different ecoregions.

Introduction

Two evolving and complementary fields have made progress in explaining how local communities are assembled from the regional species pool: metacommunity ecology and community phylogenetics. Metacommunity ecology aims to predict species distribution, abundance, and interactions on a variety of spatial and temporal scales (Leibold *et al.* 2004; Gravel *et al.* 2006). Alternatively, community phylogenetics measures how species traits and relatedness explain patterns of community structure in an evolutionary framework (Webb 2000; Cavender-Bares *et al.* 2009; Peres-Neto *et al.* 2012). Two theoretical approaches have primarily been used to explain the distribution of species in communities: niche (Diamond 1975; Webb 2000) and neutral (Bell 2001; Hubbell 2001) models. The evolution of species traits,

environmental filtering, and competitive exclusions are processes that can structure a community in a phylogenetic context, with constituent species forming a phylogenetically clustered or overdispersed assemblage, supporting the niche model. In contrast, a random pattern of phylogenetic relationships in a community can indicate that these processes are not dominant in structuring the community and that stochastic processes such as chance colonisation, random extinction, and ecological drift (random changes in the relative abundance of species) are generating the patterns observed, thus supporting the neutral model (Hubbell 2001; Hardy and Senterre 2007). The distribution and abundance of organisms are influenced by different forces at different spatial and temporal scales (Graham and Fine 2008; Kraft and Ackerly 2010). Taxonomic, functional, and

Received 1 June 2018. Accepted 5 November 2018. First published online 15 March 2019.

A. Grégoire Taillefer,¹ Department of Natural Resource Sciences, McGill University, Ste-Anne-de-Bellevue, Québec, H9X 3V9, Canada

T.A. Wheeler, (deceased) Department of Natural Resource Sciences, McGill University, Ste-Anne-de-Bellevue, Québec, H9X 3V9, Canada

¹Corresponding author (e-mail: amelie.gregoire-taillefer@mail.mcgill.ca)

Subject editor: Lisa Lumley

doi:[10.4039/tce.2019.5](https://doi.org/10.4039/tce.2019.5)

phylogenetic diversity are complementary metrics that can be used to quantify different components of biodiversity (Petchey and Gaston 2002; Magurran 2004; Cadotte *et al.* 2010). Consequently, using a multimetric approach is essential to understand the basic principles of community ecology, diversity, and composition to predict new combinations of species and environments, functioning of ecosystems, and the benefits and problems of these changes to society (Jackson and Blois 2015).

Peatlands are an important habitat that fulfils important ecosystem functions, such as improving water quality, protecting shorelines, stabilising water supplies, moderating the effects of floods, and recharging groundwater aquifers (Keiper *et al.* 2002). They are ecosystems saturated in acidic water, nutrient-poor, low in calcium and magnesium, and covered with peat, which create anaerobic conditions and characteristic vegetation composition (Gorham and Janssens 1992; National Wetlands Working Group 1997). Yet they are threatened systems due to anthropogenic activities, because in Canada more than 60% of wetlands have been transformed through agriculture, industrial/urban development and contamination, climate change, and non-native invasive species (Environment Canada 1993). Given the strong environmental constraints and specificity of the habitat, flora and fauna assemblages have been found to be characteristic (Batzler and Boix 2016). Insect assemblages, flies in particular, although poorly known, are diverse in peatlands and are influenced by both small-scale resource specificity (such as soil acidity) and large-scale factors (such as anthropogenic disturbance of the surrounding matrix) (Beaulieu and Wheeler 2001; Savage *et al.* 2011; Grégoire Taillefer and Wheeler 2017). Because of this, peatlands and their related fly assemblages represent a good study system where an assemblage is physically constrained with strong environmental pressures.

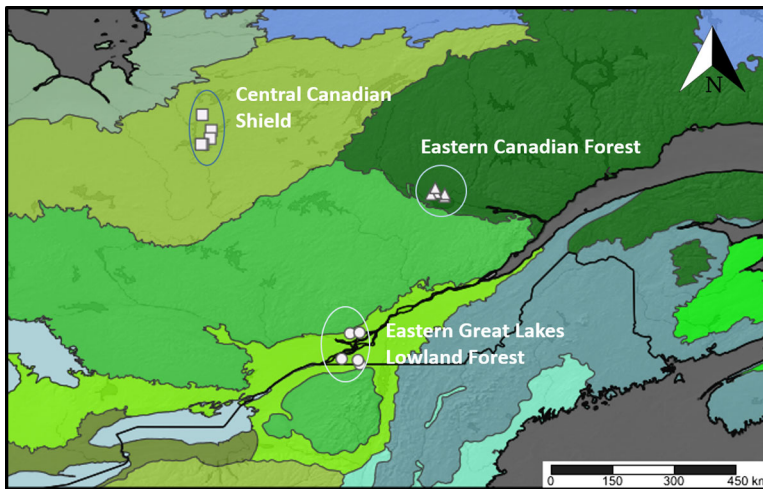
Flies (Diptera) are an ideal taxon for studying taxonomic and phylogenetic community composition in peatlands at broad spatial scales. Diptera are abundant, species-rich, and ecologically and trophically diverse in peatlands (Blades and Marshall 1994; Pollet 2001; Keiper *et al.* 2002; Grégoire Taillefer and Wheeler 2012). Diptera are associated with a variety of terrestrial, semi-aquatic, or aquatic

peatland habitats including mud shores, vascular plants, decaying organic matter, emergent vegetation, macrophytes, and algal mats (Ferrar 1987; Keiper *et al.* 2002). Some Diptera species are peatland specialists, because their larval or adult food resource or breeding media is either restricted to or characteristic of peatlands (Teskey and Burger 1976; Farkas and Brust 1986; Marshall 1994).

In this study, we use a multimetric approach (taxonomic, phylogenetic, and functional) to assess the composition and diversity of Diptera communities in peatlands across multiple ecoregions in Québec, Canada. Our model group was 21 families within Schizophora that encompasses a large range of life history and biological traits, and which are abundant and species-rich in peatlands. Consequently, we examined the taxonomic, functional, and phylogenetic species composition and diversity patterns of peatland Diptera in three Québec ecoregions, arranged broadly from south to north, and within and between ecoregions.

We tested four hypotheses on Schizophora (Diptera) diversity patterns between the three ecoregions: (1) Species richness will increase from north to south and differences in traits and species composition will be mostly related to climate. (2) Smaller and more disturbed wetlands will be characterised by lower overall trait diversity and dominated by species possessing traits related to higher resilience (Townsend *et al.* 1997; Vieira *et al.* 2004): smaller body size, shorter life cycles, and good dispersal ability. (3) More anthropogenically transformed landscape matrices will support increasing phylogenetic clustering. If traits susceptible to fragmentation are phylogenetically conserved, entire clades could be lost and remaining individuals would tend to co-occur with close relatives, reducing the phylogenetic distance between them (Webb *et al.* 2002; Cavender-Bares *et al.* 2009). (4) Species and phylogenetic beta diversity at the landscape scale will be related to local characteristics such as soil cover composition and surrounding characteristics such as community isolation, wetland size, and/or percentage of surrounding forest and wetlands (Patitucci *et al.* 2011; Savage *et al.* 2011). At the regional scale, climate will explain most of the variation in species and phylogenetic beta diversity (Økland *et al.* 2005).

Fig. 1. Map of the 15 study peatland sites across Québec, Canada. Map is separated into ecoregions: Montréal – Eastern Great Lakes Lowland Forest; Saguenay – Eastern Canadian Forest; James Bay – Central Canadian Shield (Ricketts and Imhoff 2003). Map created with SimpleMappr (www.simplemappr.net).



Materials and methods

Study sites, sampling, and processing

The three selected ecoregions (Ricketts and Imhoff 2003) differed by both climatic conditions and human occupancy, which influence the distribution of vegetation and animals (Fig. 1): Eastern Canadian Forest (Montréal Metropolitan area and surroundings, 45.2°N, 73.9°W; region code: Montréal, MTL); Eastern Great Lakes Lowland Forest (Saguenay area, 48.8°N, 72.2°W; region code: Saguenay, SAG); and Central Canadian Shield (southern James Bay area, 49.83°N, 77.27°W; region code: James Bay, BJM). To standardise the peatland type across ecoregions, we selected five open-raised bogs per ecoregion with pH < 4.5 dominated by *Sphagnum* Linnaeus (Sphagnaceae) mosses, Ericaceae shrubs, a tree cover < 30%, and no open pools of water. Sites in the Eastern Canadian Forest ecoregion were chosen from high-resolution digital aerial photographs available from Ducks Unlimited Canada (Beaulieu *et al.* 2010) and through communication with experts. Sites in the Eastern Great Lakes Lowland Forest ecoregion were chosen from peatlands inventoried by Calmé *et al.* (2002). Sites in the Central Canadian Shield ecoregion were chosen in the field by driving along the James Bay Road (Route de la Baie-James).

Sampling was conducted weekly for five weeks during the period of highest Diptera species richness and activity. Montréal sites were sampled from 28 June to 31 July 2013, Saguenay sites from 2 July to 8 August 2014, and James Bay sites from 29 June to 29 July 2015. In each site, samples were collected using yellow pan traps (4 cm deep and 12 cm of diameter) and sweeping in an area of 30 × 30 m, at least 30 m from the edge. Sweep samples were collected weekly on three random transects of 20 m with 20 sweeps on each transect in suitable weather conditions. Three transects of four pan traps each were placed 10 m apart in the 30 × 30 m plot. Pan traps were placed in the soil with their upper rim flush with the ground surface and filled with a 50% solution of propylene glycol and water, with a drop of liquid detergent as a wetting agent. Pan traps were serviced every 6–8 days.

Insects were preserved in 95% ethanol for subsequent DNA extraction. Small flies were dried using hexamethyldisilazane and then mounted; larger flies were transferred into ethyl acetate, then pinned, and air-dried. Specimens were deposited in the Lyman Entomological Museum (McGill University, Ste-Anne-de-Bellevue, Québec). Taxa were identified by morphological characters to named species or morphospecies. Target Schizophora families were selected based on

Table 1. Life history and ecological traits considered in this study including categories, abbreviations, and trait determination notes.

Trait	Categories/determination
Larval feeding habits (Feeding)	Saprophagous (SA), predator (PR), parasite/parasitoid (PA), phytophagous (PH)
Specialisation (SpeGen)	Specialist (S) – feed on one genus/type of plant; animal or substrate; generalist (G)
Size (mean of two specimens) (Size)	Small (< 4 mm), medium (4–7 mm), large (> 7 mm)
Voltinism (Voltinism)	Univoltine (U), multivoltine (M) – \geq two generations
Overwintering forms (Winter)	Egg (E), larva (L), pupa (P), adult (A)
Habitat preference for oviposition (Oviposit)	Moist (M), terrestrial (T), lentic (L)
Preferred substrate (Substrate)	Carrion or dung (C), detritus and microorganisms on soil (S), fungus, rotting wood, decaying vegetation (RW), leaf litter (LL), stem borer (SB), leaf miner (LM), flower consumer (FL), insects or arthropods (I), mammals, amphibians (M), secondary invaders (SI)
Wetland specialisation (Wetland)	Obligate (O) – specialist found exclusively in wetlands; amphibious (A) – at least part of their life cycle in wetlands and remainder in terrestrial system; facultative (F) – in terrestrial and wetland habitat, no life cycle restricted to water
Temperature range (°C) (Temp)	Determined using the difference between the maximum and minimum temperatures across sites in which the species was collected
Range (Range)	Restricted (R) – found in only one ecoregion; intermediate (I) – found in two ecoregions; broad (B) – found in three ecoregions
Frequency of occurrence (Frequency)	1 – rare (1 site); 2 – infrequent (2–5 sites); 3 – intermediate (6–10 sites); 4 – widespread (11–15 sites)
Rarity (Rarity)	Rare < 18 specimens; common \geq 18 specimens in total catch; for separation, an inflection point criterion was used from the rank abundance curve for the total abundance (Siqueira <i>et al.</i> 2012)

Traits were assigned at the species level and adult stage except for feeding habits and specialisation (larval stage).

their abundance, diversity of functional traits, and availability of identification keys and expert taxonomists. Phoridae, Tachinidae, Muscidae, and Anthomyiidae were excluded as these families are complex to identify using morphology, or experts were not available for identification. Finally, each species in the 21 families selected was assigned to a category in each of eight biological traits: feeding habits, size, specialisation, habitat preference for oviposition, preferred substrate, voltinism, overwintering stage, temperature range, and wetland specialisation. Also, three indirect rarity measures were used: frequency of occurrence, range, rarity (Table 1). Frequency was the number of sites in which the species occurred, and rarity was the number of individuals in the total collection across the 15 bog sites. Trait values were determined from direct

measurements/counts, published literature, and consultation with Diptera specialists.

Habitat and vegetation variables

At the local scale, the following ground cover attributes were surveyed at week three in five 1 × 1 m quadrats placed at each corner and in the middle of the 30 × 30 m area at each site: percent plant species cover, litter cover, canopy cover, open water cover, and bare soil cover. Fluctuation of water table depth (cm) was estimated with the polyvinyl chloride tape discoloration method (Belyea 1999). Polyvinyl chloride tape was mounted along 1-m-long bamboo sticks, one of which was inserted vertically in each site with 15 cm left above the surface and left for the five weeks of sampling. Chemical parameters of the substrate (pH, conductivity, and temperature)

were measured with Hanna pocket combo pH / conductivity / TDS tester in the field at week three at two random locations within the 30 × 30 m area.

At the regional scale, wetland size and the nature of the surrounding matrix were quantified using QuantumGIS version 1.8.0 (Quantum GIS Development Team 2012) software with the Earth Observation for Sustainable Development of Forests land cover datasets of year 2000 representing 23 land cover classes at a spatial resolution of 25 m (Wulder *et al.* 2008). Land use (open water, exposed land, urban development, low vegetation, wetland, forest, and agriculture) surrounding each wetland was measured (m²) within a circle of 2 km radius. Diptera have been found to respond to the surrounding matrix at this scale (Meats and Smallridge 2007; Savage *et al.* 2011). Climatic variables that are known to influence Arthropoda diversity (Bowden and Buddle 2010) were also extracted from WorldClim version 1.4 (Hijmans *et al.* 2005) in 30-arcsecond resolution. Values at the site locations were extracted with raster, rgdal, and foreach packages in R version 3.2.2 (R Core Team 2015). The seven variables selected were annual mean temperature, maximum temperature of warmest month, minimum temperature of coldest month, mean temperature of warmest quarter, mean temperature of coldest quarter, temperature seasonality (standard deviation * 100), and annual precipitation.

Statistical analysis: taxonomic and functional composition

Diptera communities in each peatland (Supplementary Table 1) were characterised by different biodiversity metrics to account for the probable difference in sampling effort among sites; two common approaches for comparing diversity were used: rarefaction of the data to the lowest effort (Srare) and use of a non-parametric estimator (Chao1) that is robust to unequal sampling efforts and that can quantify sampling completeness. Diversity was assessed with rarefaction curves based on 1000 permutations. Extrapolated species richness was assessed using a bias-corrected Chao index (O'Hara 2005). Observed abundance (Abun) and observed species richness (S) were also calculated to assess how common or rare a species is relative to other

species in a community. All measures were calculated from samples pooled by sites throughout the season. Significance of differences in abundance and species richness indices among ecoregion was determined based on analysis of variance *F* tests. All analyses were performed using the R vegan package (Oksanen *et al.* 2012).

Functional diversity, which considers the distribution and range of functions of co-occurring species (Supplementary Table 2) in a community, was measured with three multidimensional indices (Villéger *et al.* 2008). Functional richness (FRic) was standardised by the total FRic to constrain the values between 0 and 1. Functional evenness (FEve) and functional divergence (FDiv) were weighted by the abundance of species. First, a Gower dissimilarity matrix was computed (Podani 1999) because traits were quantitative and categorical, and lingoes corrections were applied to obtain Euclidean distance matrices. Dimensionality of the trait matrix was reduced to 40 out of 157 principal coordinate analysis (PCoA) axes due to computational power limitations. Significance of differences between sites and ecoregion was determined with analysis of variance *F* tests. Community-level weighted trait means (Lavorel *et al.* 2008) were used to determine dominant functional composition at each site, where quantitative traits are weighted by abundance and categorical traits are returned as the dominant category. All analyses above were computed with the FD package (Laliberté *et al.* 2014).

Redundancy analysis was used to test for the similarity in overall taxonomic and functional assemblages and for the relationships to environmental variables (Supplementary Table 3) using the vegan package. Prior to redundancy analysis, species abundances were Hellinger-transformed (Legendre and Gallagher 2001) as it gives low weights to low counts and many zeros. A PCoA of the dissimilarity matrix of community-level weighted trait means was computed; principal coordinate eigenvalues of community-level weighted trait means were used as response variables in the subsequent redundancy analysis. Principal component analysis was used to reduce the number of ground cover variables (Supplementary Table 3). Significant axes were identified with the Kaiser-Guttman criterion (Yeomans and Golder 1982), and the first five significant principle

component analysis axes retained 82% of the variation explained (Supplementary Table 4). To reduce the number of environmental variables in the subsequent analyses and to avoid autocorrelation between them, remaining environmental and climatic variables were observed with scatterplots. Only soil temperature was removed. Latitudes and longitudes were transformed into corresponding coordinates in X (east–west) and Y (north–south) distances in the package SoDA (Chambers 2008). The resultant environmental matrix included local variables (PC1–5, canopy cover, open water cover, fluctuation of water table, pH, conductivity) and all landscape variables (open water, exposed land, urban development, low vegetation, wetland, forest, agriculture, area). Forward selection of explanatory variables was applied with the packfor package and retained the variables with a *P*-value < 0.05. Spatial (X and Y) and climate variables were excluded from redundancy analyses and incorporated further in variation partitioning. A permutation test was used for the significance of the axes eigenvalues associated with significant environmental variables. A permutational multivariate analysis of variance based on a Bray–Curtis distance matrix was used to assess the significance of differences among ecoregions for overall species assemblages and environmental variables using the function Adonis of the vegan package.

A fourth-corner analysis (Dray and Legendre 2008) using the ade4 package (Dray and Dufour 2007) was used to assess the relationship simultaneously between separate traits, species abundance, and environmental/climatic variables. Missing entries (251) of the categorical traits were replaced by predicted values with the MissMDA package (Josse and Husson 2016), which corresponded to 11% of all entries. Associations between categorical traits and quantitative environmental variables were measured with Pearson correlation coefficient. The significance was tested by a combination of the permutation model 2 and 4 with 999 permutations to obtain a correct level of Type I error.

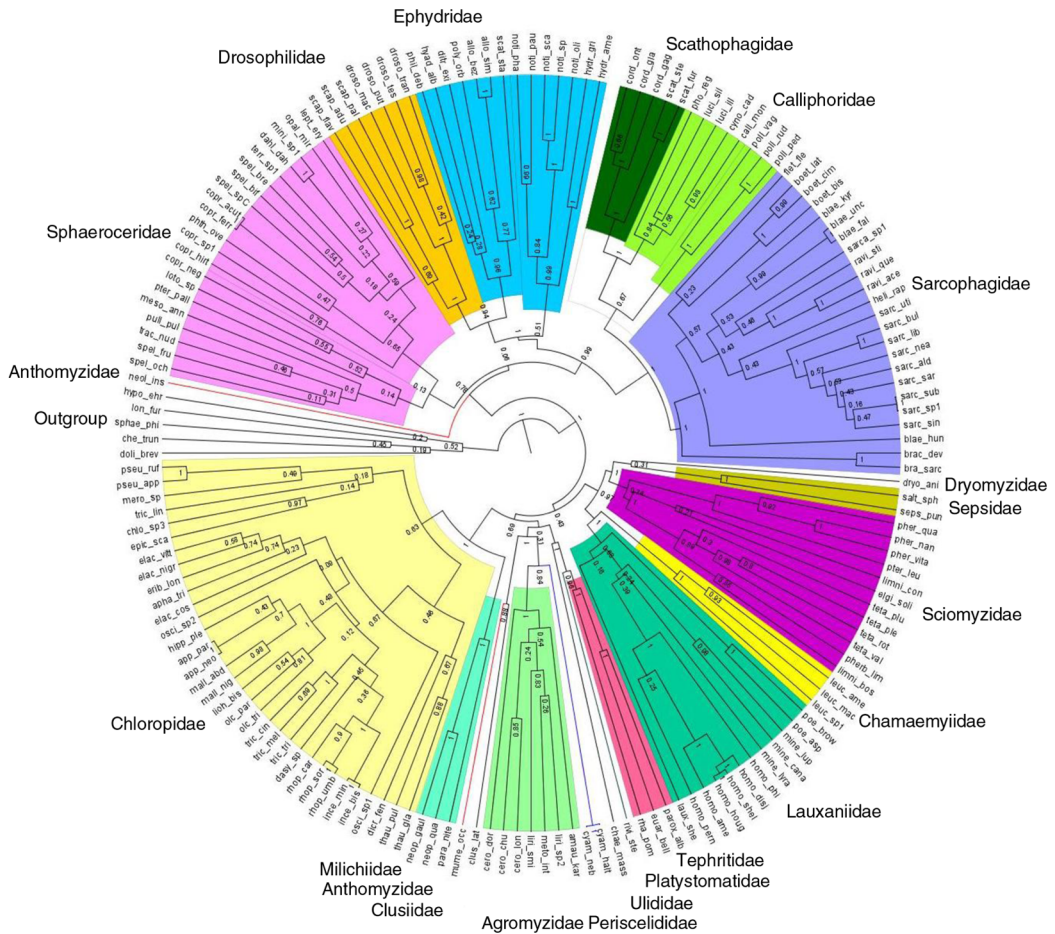
Phylogeny reconstruction

Hypothesised molecular phylogeny of Diptera species from peatland sites was generated with DNA barcode (658 base pairs of the mitochondrial COI-5P gene) used as a proxy for species-level

phylogenetic relationships (Joly *et al.* 2014). Boyle and Adamowicz (2015) found that trees built using COI alone calculate the metrics of phylogenetic community structure as accurately as the trees obtained from a multi-gene tree. A compilation of published molecular sequences in the Barcode of Life Data Systems (Ratnasingham and Hebert 2007) and our own Diptera species representing 356 specimens and 139 species submitted to the Canadian Centre for DNA Barcoding for sequencing using C_LepFolF/C_LepFolR primers (Hernández-Triana *et al.* 2014) were used in a matrix of DNA sequences constructed with Mesquite 3.04 (Maddison and Maddison 2015) and aligned with MUSCLE (Edgar 2004). A Bayesian approach was used for the phylogenetic analyses using BEAST version 1.7.5 (Drummond *et al.* 2012), and the output was examined with Tracer version 1.6 (Rambaut *et al.* 2014). To determine which model of nucleotide substitution best fit the alignment, jModelTest2 according to Akaike information criterion was applied. We constrained monophyly for families, subfamilies, genera, and groups for which there were recent and well-supported multi-gene or morphological phylogenies. These included Schizophora and some higher groups of acalyprate Diptera (Yeates and Wiegmann 2005); Calyptratae (Lambkin *et al.* 2013); Sarcophagidae (Kutty *et al.* 2010; Pape *et al.* 2011); *Ravinia* Robineau-Desvoidy (Sarcophagidae) (Giroux *et al.* 2010; Piwczynski *et al.* 2014); *Boettcheria* Parker (Sarcophagidae) (Piwczynski *et al.* 2014); Luciliinae and Polleniinae (Calliphoridae) (Kutty *et al.* 2010); Phytomyzinae (Agromyzidae) (Scheffer *et al.* 2007); Scathophagidae (Bernasconi *et al.* 2000); Milichiidae (Brake 2000); Sciomyzini and Tetanocerini (Sciomyzidae) (Tóthová *et al.* 2013); Tephritidae (Han and Ro 2009); Drosophilidae (Yassin 2013); and Chloropinae (Chloropidae) (Brake 2000). Sequences of *Dolichopus brevipennis* Meigen (Dolichopodidae), *Sphaerophoria philanthus* Meigen (Syrphidae), *Chelipoda truncata* MacDonald (Empididae), *Hypocera ehrmanni* Aldrich (Phoridae), and *Lonchoptera furcata* (Fallén) (Lonchopteridae) were used to root the tree (outgroup).

The general time-reversible model with a proportion of invariable sites (+I) and a rate of variation across sites (+G) was selected as the appropriate model with jModelTest2, and

Fig. 2. Hypothesised phylogenetic relationships, based on CO1, among Schizophora (Diptera) species collected in the 15 bogs. Colours represent families; branch lengths represent divergence time estimates; and numbers on nodes represent posterior probabilities. Species codes can be found in Supplementary Table S1.



no partitioning by codon was used. In all analyses, strong priors were set on the age of two nodes corresponding to Schizophora (lognormal: mean = 3, SD = 0.78, offset = 70) and Chloropidae (lognormal: mean = 3, SD = 0.7, offset = 42) according to paleontological and molecular data (Nardi *et al.* 2010; Wiegmann *et al.* 2011). A branching prior was set under a Yule process model, and a relaxed molecular clock was assumed using a lognormal distribution of rates (Drummond *et al.* 2006). The analyses were performed twice using a random starting tree for a Markov chain Monte Carlo chain length of 40 million generations (10 000 echo states, 4000 log parameters, 20% burn-in) (Fig. 2).

Phylogenetic community structure

The phylogenetic structure was first calculated for all Diptera pooled in each trap and repeated at each higher spatial scale: for each site and in each ecoregion. To determine if Diptera communities are more or less related than expected by chance, several indices were calculated: Faith’s phylogenetic diversity metric (PD) (Faith 1992), mean pairwise distance (MPD), and the mean nearest taxon distance (MNTD) were calculated for each community (Webb 2000; Webb *et al.* 2008). A null model shuffling taxa label to generate null communities randomised 999 times was used to determine if the phylogenetic composition of communities differed signifi-

cantly from that expected by chance. These 999 null measurements were used to calculate two measures of standardised effect size multiplied by -1 : net relatedness index (NRI) and nearest taxon index (NTI) (observed value minus the mean value of the 999 null values divided by the standard deviation of the 999 null values) and probabilities. To estimate whether net relatedness index and nearest taxon index values at the trap and site scales were significantly different from zero, t -tests were performed. Fisher's combined probability tests were performed as meta-analyses of P -values using the *metap* package (Dewey 2016). Null models were used at the ecoregion scale to assess if communities were significantly different from random.

Phylogenetic signals in trait diversity

The phylogenetic signal is defined as the tendency for related species to resemble each other. Trait conservatism is related to a higher degree of phylogenetic signal, meaning that close relatives share similar traits, while trait convergence is the tendency for distantly related species to resemble each other more than expected (Blomberg *et al.* 2003). Phylogenetic signals of continuous traits (size and temperature range) were tested with Blomberg's K , which is rescaled by dividing by the Brownian motion expectation. This gives it the property of having an expected value of 1.0 under Brownian evolution. For significance we randomly arrayed the trait data on the community phylogeny 999 times to generate a null distribution from which a P -value could be calculated using the *picante* package (Kembel *et al.* 2010). Phylogenetic signals of categorical traits were measured using Pagel's lambda with the *fitDiscrete* function in the *Geiger* package (Harmon *et al.* 2008). By comparing the likelihood ratio test of a model where the tree is transformed by lambda with one where the tree is transformed into a large polytomy ($\lambda = 0$), we could predict which one fits better by a chi-square distribution.

To evaluate the variation of alpha diversity along anthropogenically modified landscapes, a series of linear models was used to evaluate linear relationships among measures of Abun, S , S_{rare} , Chao1, $FRic$, $FDiv$, $FEve$, NRI, and NTI to the proportion of anthropogenically modified land (urban development plus agriculture). Regression

diagnostic plots were created in R to visually assess if linear regression assumptions are met. Dependant variables were $\log(x + 1)$ -transformed to meet the assumptions of the test.

To evaluate the phylogenetic turnover in Diptera communities within and between the three ecoregions, beta phylogenetic differences were tested using *comdist* (betaMPD: the average mean pairwise distance for each species in a sample to all species in another sample) and *comdistnt* functions (betaMNTD: the average mean nearest taxon distance for all species in a sample to the nearest neighbours in another sample) of the *picante* package. Then PCoA of the output dissimilarity matrix was computed, and principal coordinate eigenvalues were used as response variables in redundancy analysis to determine the effect of environment on beta phylogenetic structure. To determine if beta and phylogenetic beta diversity were positively spatially autocorrelated, the Mantel statistic was calculated with spatial distance. To assess correlations between species co-occurrence and phylogenetic distances, the Mantel statistic was also performed between Bray–Curtis dissimilarity matrices and beta phylogenetic dissimilarity matrices.

Variation partitioning was used to assess the proportion of variation in community data using adjusted R^2 in redundancy analysis ordination explained by environmental, spatial, and climatic variables at the taxonomic, functional, and phylogenetic levels. The variation was partitioned into several components depending on significance according to forward selection: pure environmental component (local and surrounding variables), pure climatic component, pure spatial component, spatially structured environmental and/or climatic components, and residual variation. Analysis of variance was used to calculate the significance levels of different components. These analyses were computed with the *vegan* package.

Results

Species and functional alpha and beta diversity

A total of 3302 specimens belonging to 202 species in 21 families were identified from the 15 bog sites in the three ecoregions (Supplementary

Table 2. Abundance (Abun), observed species richness (S), Chao1 indices (Chao1), rarefied species richness (Srare), functional richness (FRic), functional evenness (FEve), and functional divergence (FDiv) for all sites and mean diversity for each ecoregion.

Site	Abun	S	Mean S	Chao1	Mean Chao1	Srare	Mean Srare	FRic	FEve	FDiv
MTL1	223	31	49	61.3	81	22.3	32	0.16	0.61	0.87
MTL2	165	40		55.5		31.0		0.31	0.71	0.84
MTL3	282	65		86.7		39.5		0.38	0.74	0.93
MTL4	459	70		136.1		31.0		0.54	0.72	0.67
MTL5	101	38		66.9		38.0		0.21	0.73	0.74
SAG1	163	38	39	68.6	57	30.3	30	0.50	0.66	0.87
SAG2	150	42		57.0		35.9		0.30	0.73	0.79
SAG3	228	52		69.0		37.2		0.35	0.76	0.71
SAG4	268	32		47.2		20.1		0.22	0.67	0.65
SAG5	116	28		43.6		26.3		0.23	0.74	0.90
BJM1	256	38	35	72.2	55	24.2	24	0.41	0.68	0.92
BJM2	208	38		72.0		27.9		0.30	0.65	0.84
BJM3	161	34		43.1		27.4		0.48	0.76	0.91
BJM4	308	33		44.4		19.1		0.39	0.69	0.78
BJM5	214	33		46.0		23.1		0.25	0.74	0.87

Site codes: MTL, Montréal (Eastern Canadian Forest); SAG, Saguenay (Eastern Great Lakes Lowland Forest), and BJM, James Bay (Central Canadian Shield).

Table 1). Neither abundance, observed species richness, rarefied species richness nor Chao1 indices were significantly different among and within the three ecoregions ($P > 0.05$), although there was a tendency for a decrease in diversity from south to north. FRic, FEve, and FDiv were not significantly different among sites and between the three ecoregions ($P > 0.05$). FRic, the amount of niche space occupied by the species within a community, was low across all sites; FEve was moderately high and FDiv was high (Table 2).

The community-weighted means showed that species inhabiting Montréal and Saguenay sites possessed similar traits, predominantly saprophagous generalist species preferring moist substrates for oviposition (Table 3). The functional composition of James Bay sites was clearly separated from the other two ecoregions as communities were dominated by saprophagous and predacious species specialised on insects or arthropods that use terrestrial conditions for oviposition. Nearly all communities were dominated by widespread wetland facultative species found in at least six sites and in the three ecoregions. Several significant relationships among species functional traits and environment

and climate were found with fourth corner analysis (Fig. 3). The saprophagous generalist species inhabiting Montréal and Saguenay bogs were positively influenced by the coverage of wetlands surrounding the sites, although the warm temperature negatively impacted them. Insect predators in James Bay bogs were positively influenced by the fluctuation in the level of water, longitude, forests surrounding the sites, and tree cover within the sites. Habitat preference for oviposition, voltinism, size, frequency of occurrence, and rarity were not significantly correlated with any measured environmental parameters.

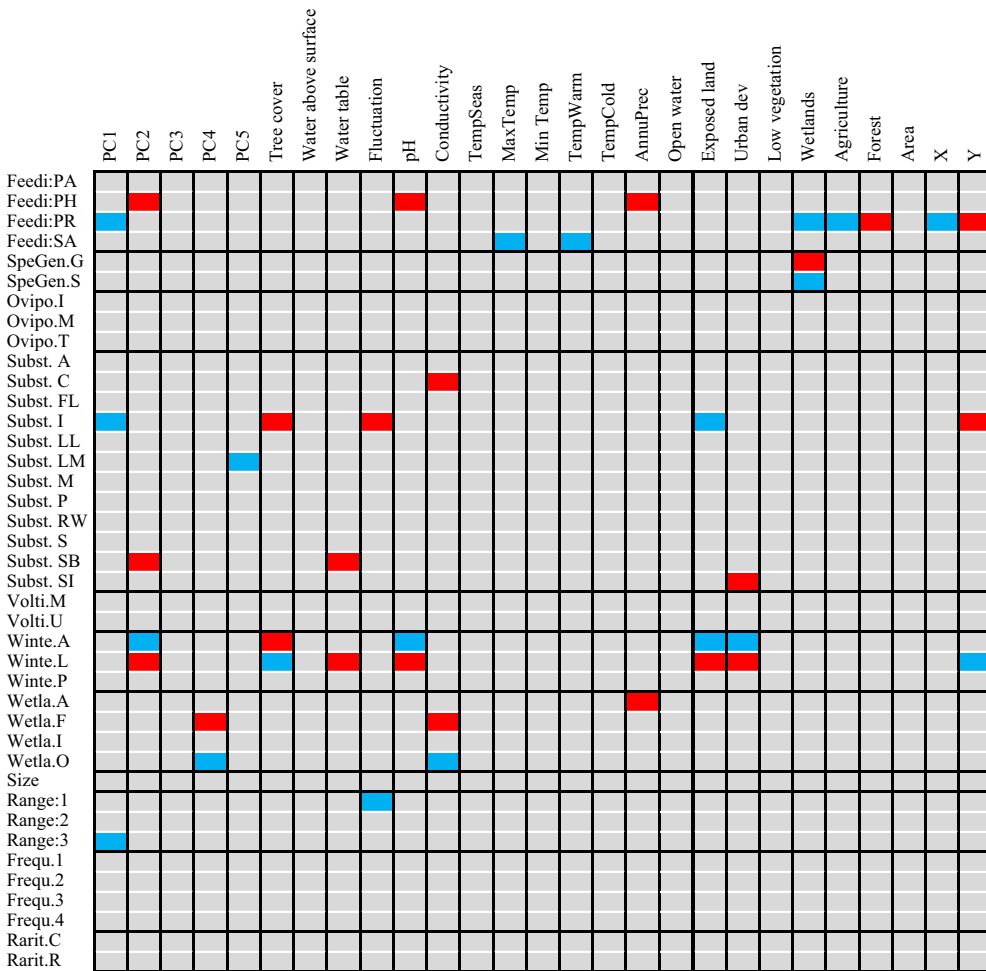
The three ecoregions were significantly different (Adonis $R^2 = 0.47$, $P = 0.001$) in species assemblages. Climate was significantly different between the three ecoregions (Adonis $R^2 = 0.98$, $P = 0.001$). Local and landscape variables were also significantly different between ecoregions (Adonis $R^2 = 0.77$, $P = 0.001$). The total proportion of variance explained in species redundancy analysis by four explanatory variables (surrounding forests, pH, PC1, PC2) was 53% (adjusted $R^2 = 0.34$) (Fig. 4A) for all sites combined. Montréal species composition in redundancy analysis was mostly affected by higher pH,

Table 3. Dominant functional composition of each site, represented by community-level weighted means.

	Feeding	Size	SpeGen	Oviposit	Substrate	Range	Frequency	Rarity	Temp	Voltinism	Winter	Wetland
MTL1	PH	2.2	S	M	SI	3	3	C	52.0	M	L	F
MTL2	PH	2.8	S	M	SB	3	4	C	52.0	M	L	F
MTL3	SA	3.6	G	T	SI	3	3	C	50.9	M	L	F
MTL4	SA	2.8	G	M	RW	1	2	C	50.6	M	A	F
MTL5	SA	2.9	G	M	I	3	4	C	52.3	M	P	F
SAG1	SA	4.2	G	M	I	3	3	C	52.9	M	L	F
SAG2	SA	4.0	G	M	C	3	3	C	51.8	M	P	F
SAG3	SA	4.6	G	T	C	3	3	C	52.5	M	P	F
SAG4	SA	3.2	G	M	I	3	3	C	51.4	M	P	F
SAG5	SA	4.0	G	M	SB	3	3	C	53.1	M	L	O
BJM1	PR	2.4	S	T	I	3	3	C	51.2	M	A	F
BJM2	SA	2.8	S	T	I	3	3	C	52.6	M	A	F
BJM3	SA	4.1	S	T	I	3	3	C	52.3	M	A	F
BJM4	PR	2.6	S	T	I	3	3	C	53.1	M	A	F
BJM5	PR	3.0	S	T	I	3	3	C	53.0	M	A	F

For continuous traits, the mean trait value is weighted by abundance, while for categorical traits, the dominant class is returned. For description of traits and associated codes, refer to [Table 1](#).

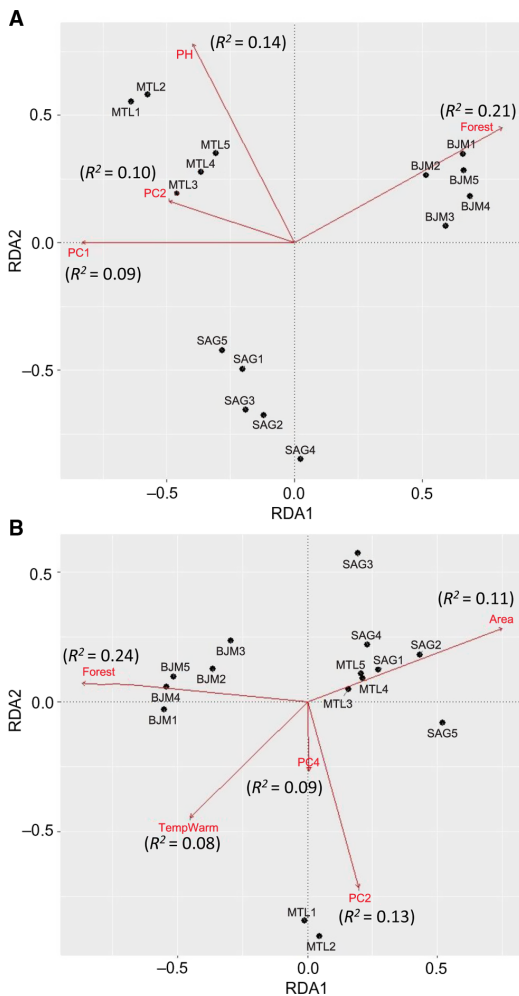
Fig. 3. Relationship between the functional traits and environmental/climatic variables of Diptera species revealed by fourth corner analysis. Blue cells correspond to significant negative relationships; red cells correspond to significant positive relationships. Refer to Table 1 for an explanation of each trait and code.



PC2, and PC1, while Saguenay species were not affected by precise environmental variables. James Bay species composition was primarily affected by surrounding forests and by higher coverage of bog specialist plant species *Maianthemum trifolium* (Linnaeus) (Asparagaceae) and *Chamaedaphne calyculata* Baillon (Ericaceae) (PC1). Montréal and Saguenay ecoregions were not significantly different in functional composition ($Adonis R^2 = 0.98, P = 0.18$). Four different environmental variables (surrounding forests, area, PC2, PC4) emerged in the redundancy analysis as having a significant effect on the functional

composition for all sites combined explaining 51% (adjusted $R^2 = 0.39$) of variance (Fig. 4B). Large area predominantly affected the functional composition of Montréal (sites 3–4–5) and Saguenay bog sites, in being composed mainly of saprophagous generalist species preferring moist substrates for oviposition. Two Montréal sites that were dominated by specialist phytophagous species (community-level weighted trait means) were mostly affected by a high coverage of *Carex oligosperma* Michaux (Cyperaceae) and low litter cover (PC2), and high coverage of *Polytrichum* Hedwig (Polytrichaceae) species and low

Fig. 4. Redundancy analyses of species (A) and functional composition (B). Arrows represent vectors of significant variables ($P < 0.05$) explaining community structure, R^2 values in parentheses from the forward selected models examining the effect of environmental factors.



Eriophorum vaginatum Linnaeus (Cyperaceae) (PC4). James Bay communities were mostly affected by a high percentage of surrounding forest.

Phylogenetic alpha and beta composition

Montréal communities at the three scales were significantly different from random for net relatedness index and nearest taxon index, and Faith's phylogenetic diversity metric was also significantly different at the site scale (Table 4). At the trap scale for Saguenay, the three indices were significantly different from random, while

at the site scale Faith's phylogenetic diversity metric and nearest taxon index were significant and at the ecoregion scale only Faith's phylogenetic diversity metric was different from random. James Bay communities were not different from random at every scale. Mantel correlation between beta and phylogenetic beta diversity was significantly correlated with spatial distance for species ($r = 0.68$, $P = 0.001$), mean nearest taxon distance ($r = 0.53$, $P = 0.002$), and traits ($r = 0.43$, $P = 0.003$), although not mean pairwise distance ($r = 0.001$, $P = 0.45$). Species co-occurrence was significantly correlated ($P < 0.05$) with phylogenetic distances and functional distances.

The three ecoregions were significantly different in phylogenetic beta diversity (betaMNTD Adonis $R^2 = 0.68$, $P = 0.001$; betaMPD Adonis $R^2 = 0.38$, $P = 0.001$). The total variance explained by the redundancy analysis in betaMNTD for all sites combined by four explanatory variables was 31% (adjusted $R^2 = 0.22$) (Fig. 5A). Phylogenetic structure at the Montréal sites at the tip of the tree was mostly influenced by substrate coverage (PC1), while Saguenay communities were mainly affected by the large bog areas and substrate coverage (PC2) in this ecoregion. James Bay communities were affected by low vegetation surrounding the sites. The total variance explained by the redundancy analysis in betaMPD for all sites combined by two explanatory variables was 19% (adjusted $R^2 = 0.06$) (Fig. 5b). Surrounding exposed lands were affecting the majority of Montréal communities, while surrounding forests were affecting James Bay communities. Phylogenetic turnover was higher deeper in the phylogeny (betaMPD) for Montréal communities than within the other two ecoregions (Fig. 5B), as sites were more spread apart. Forward selection analyses showed that overall betaTD, betaFD, and betaMNTD were significantly associated with geographical distances, while betaMPD was only significantly associated with east–west coordinates. Variation partitioning analyses (Fig. 6) explained 45% of the total variation of betaTD with the shared spatial, environmental, and climatic fraction explaining the highest proportion of variation (24%, $P = 0.001$). Pure environmental variables accounted for 8% ($P = 0.001$) of the variation, while climate accounted for 2% (mean temperature of warmest quarter (TempWarm), maximum temperature

Table 4. Phylogenetic diversity (PD), net relatedness index (NRI), and nearest taxon index (NTI) for Diptera communities in 15 sites across three ecoregions at three spatial scales (trap, site, ecoregion).

		PD	<i>P</i>	NRI	<i>P</i>	NTI	<i>P</i>
Trap_{mean}	MTL	381	0.46	0.43	0.01	0.35	0.02
	SAG	367	0.01	0.98	< 0.001	0.80	< 0.001
	BJM	293	0.17	0.77	0.10	0.76	0.07
Site_{mean}	MTL	2132	< 0.001	1.29	0.01	1.53	< 0.001
	SAG	1576	< 0.001	0.40	0.17	0.80	0.02
	BJM	1548	0.38	0.81	0.06	0.22	0.51
Ecoregion	MTL	4794	0.42	2.25	0.03	1.64	0.04
	SAG	2856	0.002	-0.22	0.52	1.40	0.09
	BJM	2950	0.61	0.90	0.15	-0.21	0.58

Fisher's combined probability tests were performed to assess if overall *P*-values were significant at the trap and site scales. Null models were used at the ecoregion scale to assess if communities were significantly different from random. Significant *P*-values are in bold font.

of warmest month (MaxTemp, $P = 0.001$). The shared component between environmental, spatial, and climatic variables accounted for 18% ($P = 0.003$), the pure environmental fraction accounted for 14% ($P = 0.002$), and climate accounted for 9% (TempWarm, MaxTemp; $P = 0.001$) of the total variation (50%) of betaFD. The shared fraction of spatial, environmental, and climatic (annual mean temperature (AnnuTemp, MaxTemp) variables explained 16% ($P = 0.001$) of the total variation (26%) of betaMNTD. The shared spatial, environmental, and climatic fraction explained the highest proportion of variation (4%, $P = 0.001$) of the total variation (11%, $P = 0.01$) in betaMPD. The pure climatic variables (TempWarm, MaxTemp) explained only 0.7% ($P = 0.001$) of the variation.

Linear models indicated that species richness was significantly positively related to agriculture (df = 12, $F = 3.29$, adjusted $R^2 = 0.25$, $P = 0.04$). Urban development and agriculture had an additive effect on FDiv with a negative and positive association respectively (df = 12, $F = 8.73$, adjusted $R^2 = 0.52$, $P = 0.005$). Phylogenetic diversity had a similar association with agriculture as species richness (df = 12, $F = 4.04$, adjusted $R^2 = 0.30$, $P = 0.03$). Nearest taxon index was positively related to urban development (df = 12, $F = 5.02$, adjusted $R^2 = 0.36$, $P = 0.012$); therefore, with increasing urban coverage, clustering is increasing.

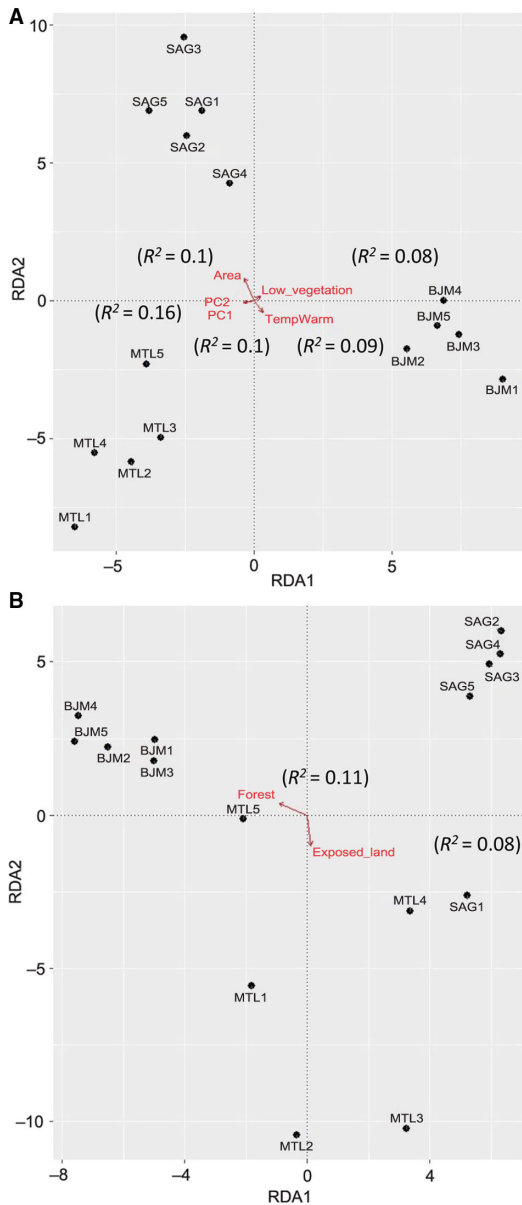
Tests of phylogenetic signal showed that traits showing a signal are phylogenetically labile, with

close relatives less similar than expected under a Brownian model of evolution. The *K* statistic was significantly different than a signal expected by chance but less similar ($K < 1$) than expected under a Brownian model for size ($K = 0.68$, $P = 0.001$) and temperature range ($K = 0.29$, $P = 0.01$). The variance in size and temperature range found within clades could be caused by either departure from Brownian motion evolution, such as adaptive evolution that is uncorrelated with the phylogeny, or measurement error. Pagel's lambda was not significantly different ($P > 0.05$) from a giant polytomy for all other categorical traits.

Discussion

Only a few studies have examined the diversity of wetland Diptera (e.g., Blades and Marshall 1994; Barták and Roháček 1999; Grégoire Taillefer and Wheeler 2010, 2012, 2013, 2017), and even fewer have looked at their phylogenetic community structure (Pfenninger *et al.* 2007; Espíndola *et al.* 2012; Silver *et al.* 2012). Phylogenetic relatedness and functional structure complemented the information provided by classical metrics. Different dimensions of Diptera diversity in bogs across different ecoregions are more evident with this multimetric approach and help to predict if communities are mainly maintained by competition-driven differentiation, environmentally filtered coexistence, or stochasticity. Bogs across the three ecoregions support similar abundance, species richness, and

Fig. 5. Redundancy analyses of beta phylogenetic composition for mean nearest taxon distance (A) and mean pair-wise distance (B). Arrows represent vectors of significant variables ($P < 0.05$) explaining community structure, R^2 values in parentheses from the forward selected models examining the effect of environmental factors.

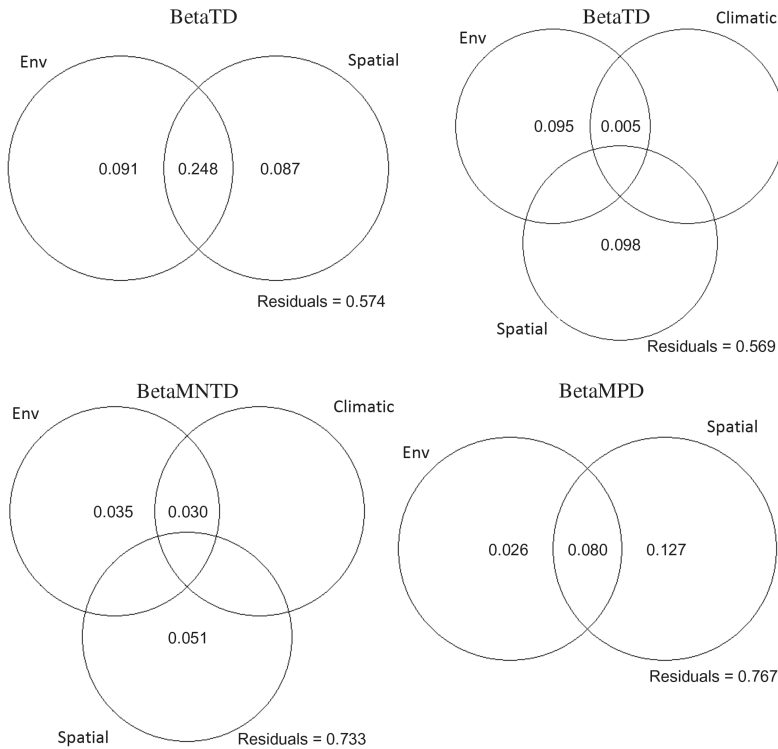


functional diversity. Our results suggest that major forces structuring Diptera assemblages in bogs across Québec are stochastic processes such as dispersal limitations. However, those random

patterns change to clustering when anthropogenic disturbances modify the landscape. Assembly rules are mostly dictated by patch and landscape parameters specific to each ecoregion affecting dispersal and establishment between sites.

We did not find evidence of limiting similarity as a mechanism of Diptera community assembly in bogs at any spatial scale. A random pattern can result when opposing patterns of clustering and overdispersion are found within the same community (Hardy and Senterre 2007; Mayfield and Levine 2010; Panglinda and Pramual 2016). However, biotic interactions have rarely been considered important mechanisms to control invertebrate species biodiversity in wet environments (Batzer and Wissinger 1996; Vinson and Hawkins 1998), and this still holds with the advent of phylogenetic analyses (Ruhí *et al.* 2013; Grégoire Taillefer and Wheeler 2017). Our results suggest that dispersal limitation of small-sized species, coupled with environmental filtering caused by the strength of the environmental gradients, is driving the spatial patterns observed in these bog Diptera communities. The most common species collected had small sizes, and many of these species may be dispersal-limited because several acalyptrates do not appear to fly readily or for long distances (T.A.W., personal observations). Therefore, they likely benefited from dispersal by wind (Kovats *et al.* 1996; Heino 2013) over a long period of time, which explains their occurrence in the three ecoregions. A historical imprint caused by dispersal limitations over time likely created these phylogenetic random patterns (Hubbell 2001). In two of our other studies on wetland Diptera communities in Québec, we found that inter-site distance mostly affected beta taxonomic and phylogenetic diversity of small and common species (Grégoire Taillefer and Wheeler 2017), and that bog disturbance had the greatest effect on the distribution of small Brachycera and Acalyptrate flies (Grégoire Taillefer and Wheeler 2012). Abundant, small-bodied, multivoltine insect species were affected by stochastic processes in tropical stream meta-communities (Saito *et al.* 2015a). These functional traits are similar to our dominant traits in every bog communities. As local variations in species diversity and composition are dependent on historical diversification and dispersion, a larger latitudinal gradient would have been necessary to

Fig. 6. Variation partitioning diagrams of taxonomic (betaTD), functional (betaFD), and phylogenetic (betaMNTD, betaMPD) composition. Circles represent variation explained by unique and shared fractions of significant (based on forward selection) environmental (Env), climatic, and spatial variables, while numbers correspond to the adjusted coefficient of determination (adjusted R^2) associated with each circle. Only significant and positive adjusted R^2 are shown.



detect a change in species diversity and an effect of species pools (Martin 2016).

However, with recent drastic human modification of the landscape, less suitable patches and more barriers to dispersal are found neighbouring those bogs, so agriculture and urban development act as filters for the small proportion of species in the species pool that can disperse in these conditions. Contrary to our hypothesis, pure climatic variables were not the major determinants of community structure at the regional scale. In Montréal, assembly rules are mostly dictated by patch and landscape parameters affecting dispersal and establishment between sites in an urban matrix. The high turnover of species in Montréal sites is mostly affected by surrounding exposed lands (*e.g.*, non-vegetated, non-developed, sediments, beaches, burnt area) where Diptera species probably have environmental requirements

suitable for bog habitats and local conditions. As species emigrate from the surrounding habitats, they are filtered by anthropogenic barriers and the unique local vegetation. A selective filtering role of anthropogenic disturbances has been found for several other taxa (Brunbjerg *et al.* 2012; Ding *et al.* 2012; Concepción *et al.* 2016; Hausberger and Korb 2016; Mykrä *et al.* 2016). Increase environmental stresses in aquatic Diptera wetland communities have also been found to increase phylogenetic clustering in Alberta, Canada (Silver *et al.* 2012).

Bog communities are distributed along broad environmental gradients in surrounding land use and anthropogenic disturbance. Montréal bogs can be seen as more isolated systems, where exchange with the anthropogenically disturbed surrounding environment is difficult. On average 28% of the proportion of the 2-km-radius

area around each bog was anthropogenically modified. Isolation is also illustrated by the higher variation in betaMPD observed compared with the other two ecoregions, which means that species composing Montréal sites were found in different families. Our results are similar to Angold *et al.* (2006) who found that anthropogenic activities and urban environmental conditions influence ground beetle (Coleoptera: Carabidae) species diversity and composition. Vegetation structure, level of disturbance affecting the dominance of generalists, and woodland ground beetle specialists are the most significant influence on assemblages in urban habitat patches. Saguenay bogs are more intermediate in surrounding land use to Montréal and James Bay. They have less anthropogenic disturbances than Montréal and more wetland coverage than James Bay (approximately 5% of anthropogenic land use, 36% forest, 43% wetlands). James Bay bogs are more open systems, where exchange can happen with the surrounding undisturbed environment (approximately 0.03% of anthropogenic modification). Predacious insect species in James Bay immigrate from the surrounding forests as the bogs in this region are connected to a complex of forests (approximately 80% land cover) and wetlands (approximately 9% land cover). Consequently, community assembly within regions with high fragmentation of habitat, characteristic local conditions, and low dispersal rates usually converge in phylogenetic clustering of assemblages; whereas in regions where dispersal is prevalent, assembly patterns should be largely stochastic and dominated by species dispersal capacity (Emerson and Gillespie 2008; Weiher *et al.* 2011).

High levels of functional divergences are associated with a high degree of niche differentiation among species within communities: the most abundant species are very dissimilar and likely compete weakly. As shown in the community-level weighted trait means analysis, common species were facultative wetland inhabitants, and FDiv was increasing with the coverage of agricultural land but decreasing with urban development. Consequently, the recent species turnover in Montréal must originate from species inhabiting surrounding agricultural land that possess very dissimilar traits to peatland inhabiting species. And as these peatlands possess unique features in an urban matrix, clustering at the tip of

the phylogeny (NTI) is probably due to *in situ* environmental filtering (PC1 and PC2) and low dispersal rates of generalist saprophagous species from surrounding wetlands and exposed lands. Another of our study encompassing more environmental heterogeneity in Montréal region (Grégoire Taillefer and Wheeler 2017) showed that bogs have harsher environmental conditions compared with other wetland types, which also act as selective pressure. Therefore, heterogenisation of communities, FRic, and redundancy levels in bogs are systematically limited despite differences in species assemblages.

The large proportion of unexplained variation in beta diversity for each facet of biodiversity considered suggests that other factors are determining community patterns. These factors are probably spatially structured environmental factors, such as a combination of local and surrounding conditions with dispersal limitations. Moreover, taxonomic turnover was high among ecoregions, which increased phylogenetic turnover; and beta diversity was correlated with spatial distance except betaMPD, which was only affected by longitude. Sojininen *et al.* (2007) found in a meta-analysis that shifts in community composition were happening at the scale of 1000 km in line with large-scale variability in environmental conditions and that passive versus active dispersal did not have an effect on species turnover with increasing spatial scale. Here, betaMPD might be correlated more to Pleistocene glaciations and Holocene post-glacial dispersal, as these had a profound impact on Nearctic biotas in a diversity of habitats (Lafontaine and Wood 1988; Harris and Taylor 2010; Solecki *et al.* 2016). Long-term dispersal limitation in an east–west direction, from coastal to more continental conditions, seems to shape the original beta diversity, as explained variation in betaMPD was mostly driven by pure spatial factors. Arnan *et al.* (2015) found similar results to ours for the three diversity measures calculated in ant assemblages. Spatial factors thus dispersal limitation played a major role in shaping ant communities in different climatic and human disturbed environments across Europe.

Conclusions

The major forces shown to structure Diptera assemblages in this study in bogs across Québec

are stochastic processes such as dispersal limitations of abundant, small, multivoltine species. The random patterns observed change to environmental filtering with increased anthropogenic disturbances modifying the landscape. The massive Diptera radiation that began in the early Cenozoic and the different historical disturbances are probably at the origin of the functional and phylogenetic structure observed for peatland Diptera. Using only traditional metrics, it would not have been apparent that Montréal bog communities are impacted by land use changes and that these impacts change the species pool capable of inhabiting these isolated unique habitats (Saito *et al.* 2015b). This suggests that the three levels of diversity studied are complementary and give a different picture of macroecological patterns in those threatened habitats. Our results show that conservation of mobile organisms in bogs will depend on conservation plans focussing on both patch quality and surrounding landscape. Different conservation strategies need to be applied in different ecoregions. Montréal should be prioritised for biodiversity conservation through the re-establishment of habitat connectivity (Tewksbury *et al.* 2002; Staddon *et al.* 2010), and unique roles of wetlands should be key factors to maintain high species richness. In Saguenay, the large bog areas should be maintained as this diminishes the surrounding landscape pressure; and with the continuing increase of human-induced changes, this will become more important. Finally, protecting clusters of forest and wetlands in James Bay is a more effective conservation strategy than preserving islands of peatlands, as mobile organisms may see clusters of habitat as continuous potential niches instead of unreachable islands (Hatfield and LeBuhn 2007). Developing a standard approach and efficient techniques for large-scale biodiversity monitoring, such as high-throughput DNA sequencing (Gibson *et al.* 2015) to assess the efficacy of mitigation measures, would be highly valuable.

Supplementary material

To view supplementary material for this article, please visit <https://doi.org/10.4039/tce.2019.5>.

Acknowledgements

We are grateful to Dr. Stéphanie Pellerin and Dr. Jeffrey Cardille for discussion, comments, and help in designing the study. We thank Dr. Marjolaine Giroux, Robert Loiseau, and Entomofaune du Québec for support in grant applications. Joanie Tremblay collected samples in 2014. Kamil Chatila-Amos assisted with fieldwork and sample sorting in 2015. Site access and/or permits were provided by: Société des établissements de plein air du Québec; Regional County Municipality Maria-Chapdelaine; Nature Conservancy; Ministère du Développement durable de l'Environnement, de la Faune et des Parcs; Transport Canada; and the city of Blainville. Many thanks to Dr. Marjolaine Giroux and Stéphanie Boucher for identification of Sarcophagidae and Agromyzidae, respectively. This study was funded by a Natural Sciences and Engineering Research Council of Canada Discovery Grant to Terry Wheeler, and a Natural Sciences and Engineering Research Council of Canada Alexander Graham Bell Graduate Scholarship-Doctoral Programme to Amélie Grégoire Taillefer.

Conflict of interest

The authors declare that they have no conflict of interest.

Contribution of authors

Amélie Grégoire Taillefer conceived and designed the experiments, analysed the data, wrote the paper, prepared figures and/or tables, and reviewed drafts of the paper. Terry Wheeler designed the experiments and reviewed drafts of the paper. Dr. Terry Wheeler is deceased as of July 2017. This manuscript describes original work, is not under consideration by any other journal, and has not previously been submitted to *The Canadian Entomologist* in any form. This paper (or closely related research) has not been published or accepted for publication. No other paper using the same data set has been published. Data collected from four sites in Montréal have been used to describe community patterns in another research involving 12 wetland sites that was published in *Insect Diversity and Conservation*

in 2017. All contributing authors agree with the presented findings and submission in this journal. All sources of funding are acknowledged in the manuscript, and no direct financial benefits are resulting from this publication. Consent for research involving human or animal is not applicable. Wetland owners issued permits for the fieldwork.

References

- Angold, P.G., Sadler J.P., Hill, M.O., Pullin, A., Rushton, S., Austin K., *et al.* 2006. Biodiversity in urban habitat patches. *Science of the Total Environment*, **360**: 196–204.
- Arnan, X., Cerdá, X., and Retana, J. 2015. Partitioning the impact of environment and spatial structure on alpha and beta components of taxonomic, functional, and phylogenetic diversity in European ants. *PeerJ*, **3**: e1241.
- Barták, M. and Roháček, J. 1999. The species of the family Empididae (Diptera) of the six peat-bogs in the Šumava Mts (Czech Republic). *Acta Universitatis Carolinae Biologica*, **43**: 7–26.
- Batzer, D. and Boix, D. 2016. An introduction to freshwater wetlands and their invertebrates. *In Invertebrates in freshwater wetlands: an international perspective on their ecology*. Edited by D. Batzer and D. Boix. Springer International Publishing, Basel, Switzerland. Pp. 1–24.
- Batzer, D.P. and Wissinger, S.A. 1996. Ecology of insect communities in nontidal wetlands. *Annual Review of Entomology*, **41**: 75–100.
- Beaulieu, J., Daigle, G., Gervais, F., Murray, S., and Villeneuve, C. 2010. Rapport synthèse de la cartographie détaillée des milieux humides du territoire de la Communauté métropolitaine de Montréal. Canards Illimités. Québec et ministère du Développement durable, de l'Environnement et des Parcs, Direction du patrimoine écologique et des parcs, Montréal, Québec, Canada. Available from http://maps.ducks.ca/cwi/com/duc/assets/reports/Rapport_carto_mhs_CMM_2011.pdf [accessed 5 February 2013].
- Beaulieu, F. and Wheeler, T.A. 2001. Inventaire des espèces de brachycères (Diptera) des prés de laïches (Cyperaceae, *Carex*) de la Réserve nationale de faune du lac Saint-François, Québec. *Fabriques*, **26**: 57–74.
- Bell, G. 2001. Neutral macroecology. *Science*, **293**: 2413–2418.
- Belyea, L.R. 1999. A novel indicator of reducing conditions and water-table depth in mires. *Functional Ecology*, **13**: 431–434.
- Bernasconi, M.V., Pawlowski, J., Valsangiacomo, C., Piffaretti, J.-C., and Ward, P.I. 2000. Phylogeny of the Scathophagidae (Diptera, Calyptratae) based on mitochondrial DNA sequences. *Molecular Phylogenetic Evolution*, **16**: 308–315.
- Blades, D.C.A. and Marshall, S.A. 1994. Terrestrial arthropods of Canadian peatlands: synopsis of pan trap collections at four southern Ontario peatlands. *Memoirs of the Entomological Society of Canada*, **169**: 221–284.
- Blomberg, S.P., Garland, T., and Ives, A.R. 2003. Testing for phylogenetic signal in comparative data: behavioral traits are more labile. *Evolution*, **57**: 717–745.
- Bowden, J. and Buddle, C. 2010. Determinants of ground-dwelling spider assemblages at a regional scale in the Yukon Territory, Canada. *Ecoscience*, **17**: 287–297.
- Boyle, E.E. and Adamowicz, J.S. 2015. Community phylogenetics: assessing tree reconstruction methods and the utility of DNA barcodes. *Public Library of Science One*, **10**: e0126662.
- Brake, I. 2000. Phylogenetic systematics of the Milichiidae (Diptera, Schizophora). *Entomologica Scandinavica*, Supplement, **57**: 1–120.
- Brunbjerg, A.K., Borchsenius, F., Eiserhardt, W.L., Ejrnæs, R., and Svenning, J.-C. 2012. Disturbance drives phylogenetic community structure in coastal dune vegetation. *Journal of Vegetation Science*, **23**: 1082–1094.
- Cadotte, M.W., Davies, J.T., Regetz, J., Kembel, S.W., Cleland, E., and Oakley, T.H. 2010. Phylogenetic diversity metrics for ecological communities: integrating species richness, abundance and evolutionary history. *Ecology Letters*, **13**: 96–105.
- Calmé, S., Desrochers, A., and Savard, J.-P.L. 2002. Regional significance of peatlands for avifaunal diversity in southern Quebec. *Biological Conservation*, **107**: 273–281.
- Cavender-Bares, J., Kozak, K.H., Fine, P.V.A., and Kembel, S.W. 2009. The merging of community ecology and phylogenetic biology. *Ecology Letters*, **12**: 693–715.
- Chambers, J.M. 2008. Software for data analysis: programming with R. Springer, Berlin, Germany.
- Concepción, E.D., Götzenberger, L., Nobis, M.P., de Bello, F., Obrist, M.K., and Moretti, M. 2016. Contrasting trait assembly patterns in plant and bird communities along environmental and human-induced land-use gradients. *Ecography*, **40**: 753–763.
- Dewey, M. 2016. metap: meta-analysis of significance values. R package version 0.7. Available from www.dewey.myzen.co.uk/meta/meta.html [accessed 16 January 2015].
- Diamond, J.M. 1975. Assembly of species communities. *In Ecology and evolution of communities*. Edited by M.L. Cody and J.M. Diamond. Harvard University Press, Cambridge, MA. Pp. 342–344.
- Ding, Y., Zang, R., Letcher, S.G., Liu, S., and He, F. 2012. Disturbance regime changes the trait distribution, phylogenetic structure and community assembly of tropical rain forests. *Oikos*, **121**: 1263–1270.
- Dray, S. and Dufour, A.B. 2007. The ade4 package: implementing the duality diagram for ecologists. *Journal of Statistical Software*, **22**: 1–20.

- Dray, S. and Legendre, P. 2008. Testing the species traits to environmental relationships: the fourth-corner problem revisited. *Ecology*, **89**: 3400–3412.
- Drummond, A.J., Ho, S.Y.W., Phillips, M.J., and Rambaut, A. 2006. Relaxed phylogenetics and dating with confidence. *Public Library of Science Biology*, **4**: e88.
- Drummond, A.J., Suchard, M.A., Xie, D., and Rambaut, A. 2012. Bayesian phylogenetics with BEAUti and the BEAST 1.7. *Molecular Biology and Evolution*, **29**: 1969–1973.
- Edgar, R.C. 2004. MUSCLE: multiple sequence alignment with high accuracy and high throughput. *Nucleic Acids Research*, **32**: 1792–1797.
- Emerson, B.C. and Gillespie, R.G. 2008. Phylogenetic analysis of community assembly and structure over space and time. *Trends in Ecology and Evolution*, **23**: 619–630.
- Environment Canada. 1993. Wetlands - a celebration of life. Final report of the Canadian Wetlands Conservation Task Force. Issue paper 1993–1. Environment Canada, Ottawa, Ontario, Canada.
- Espíndola, A., Buerki, S., and Alvarez, N. 2012. Ecological and historical drivers of diversification in the fly genus *Chiastocheta* Pokorný. *Molecular Phylogenetics and Evolution*, **63**: 466–474.
- Faith, D.P. 1992. Conservation evaluation and phylogenetic diversity. *Biological Conservation*, **61**: 1–10.
- Farkas, M.J. and Brust, R.A. 1986. Pitcher-plant sarcophagids from Manitoba and Ontario. *The Canadian Entomologist*, **118**: 1307–1308.
- Ferrar, P. 1987. A guide to the breeding habits and immature stages of Diptera Cyclorrhapha. Part 1. E.J. Brill/Scandinavian Science Press, Leiden, The Netherlands.
- Gibson, J.F., Shokralla, S., Curry, C., King, I., Baird, D.J., and Hajibabaei, M. 2015. Biomonitoring boreal wetlands using environmental DNA barcoding and high-throughput sequencing. *Genome*, **58**: 220–221.
- Giroux, M., Pape, T., and Wheeler, T.A. 2010. Towards a phylogeny of the flesh flies (Diptera: Sarcophagidae): morphology and phylogenetic implications of the acrophallus in the subfamily Sarcophaginae. *Zoological Journal of the Linnean Society*, **158**: 740–778.
- Gorham, E. and Janssens, J. 1992. Concepts of fen and bog re-examined in relation to bryophyte cover and the acidity of surface waters. *Acta Societatis Botanicorum Poloniae*, **61**: 7–20.
- Graham, C.H. and Fine, P.V.A. 2008. Phylogenetic beta diversity: linking ecological and evolutionary processes across space in time. *Ecology Letters*, **11**: 1265–1277.
- Gravel, D., Canham, C.D., Beaudet, M., and Messier, C. 2006. Reconciling niche and neutrality: the continuum hypothesis. *Ecology Letters*, **9**: 399–409.
- Grégoire Taillefer, A. and Wheeler, T.A. 2010. Effect of drainage ditches on Brachycera (Diptera) diversity in a southern Quebec peatland. *The Canadian Entomologist*, **142**: 160–172.
- Grégoire Taillefer, A. and Wheeler, T.A. 2012. Community assembly of Diptera following restoration of mined boreal bogs: taxonomic and functional diversity. *Journal of Insect Conservation*, **16**: 165–176.
- Grégoire Taillefer, A. and Wheeler, T.A. 2013. Animal colonization of restored peatlands: inoculation of plant material as a source of insects. *Restoration Ecology*, **21**: 140–144.
- Grégoire Taillefer, A. and Wheeler, T.A. 2017. Tracking wetland community evolution using Diptera taxonomic, functional and phylogenetic structure. *Insect Conservation and Diversity*, **11**: 276–293.
- Han, H.Y. and Ro, K.E. 2009. Molecular phylogeny of the family Tephritidae (Insecta: Diptera): new insight from combined analysis of the mitochondrial 12S, 16S, and COII genes. *Molecules and Cells*, **27**: 55–66.
- Hardy, O.J. and Senterre, B. 2007. Characterizing the phylogenetic structure of communities by an additive partitioning of phylogenetic diversity. *Journal of Ecology*, **95**: 493–506.
- Harmon, L.J., Weir, J.T., Brock, C.D., Glor, R.E., and Challenger, W. 2008. GEIGER: investigating evolutionary radiations. *Bioinformatics*, **24**: 129–131.
- Harris, N.L. and Taylor, E.B. 2010. Pleistocene glaciations and contemporary genetic diversity in a Beringian fish, the broad whitefish, *Coregonus nasus* (Pallas): inferences from microsatellite DNA variation. *Journal of Evolutionary Biology*, **23**: 72–86.
- Hatfield, R.G. and LeBuhn, G. 2007. Patch and landscape factors shape community assemblage of bumble bees, *Bombus* spp. (Hymenoptera: Apidae), in montane meadows. *Biological Conservation*, **139**: 150–158.
- Hausberger, B. and Korb, J. 2016. The impact of anthropogenic disturbance on assembly patterns of termite communities. *Biotropica*, **48**: 356–364.
- Heino, J. 2013. Does dispersal ability affect the relative importance of environmental control and spatial structuring of littoral macroinvertebrate communities? *Oecologia*, **171**: 971–980.
- Hernández-Triana, L.M., Prosser, S.W., Rodríguez-Perez, M.A., Chaverri, L.G., Hebert, P.D.N., and Gregory, T.R. 2014. Recovery of DNA barcodes from blackfly museum specimens (Diptera: Simuliidae) using primer sets that target a variety of sequence lengths. *Molecular Ecology Resources*, **14**: 508–518.
- Hijmans, R.J., Cameron, S.E., Parra, J.L., Jones, P.G., and Jarvis, A. 2005. Very high resolution interpolated climate surfaces for global land areas. *International Journal of Climatology*, **25**: 1965–1978.
- Hubbell, S.P. 2001. The unified neutral theory of biodiversity and biogeography. Princeton University Press, Princeton, New Jersey, United States of America.
- Jackson, S.T. and Blois, J.L. 2015. Community ecology in a changing environment: perspectives from the Quaternary. *Proceedings of the National Academy of Sciences of the United States of America*, **112**: 4915–4921.

- Joly, S., Davies, T.J., Archambault, A., Bruneau, A., Derry, A., Kembel, S.W., *et al.* 2014. Ecology in the age of DNA barcoding: the resource, the promise, and the challenges ahead. *Molecular Ecology Resources*, **14**: 221–232.
- Josse, J. and Husson, F. 2016. missMDA: a package for handling missing values in multivariate data analysis. *Journal of Statistical Software*, **70**: 1–31.
- Keiper, J.B., Walton, E.W., and Foote, B.A. 2002. Biology and ecology of higher Diptera from fresh water wetlands. *Annual Review of Entomology*, **47**: 207–232.
- Kembel, S.W., Cowan, P.D., Helmus, M.R., Cornwell, W.K., Morlon, H., Ackerly, D.D., *et al.* 2010. Picante: R tools for integrating phylogenies and ecology. *Bioinformatics*, **26**: 1463–1464.
- Kovats, Z., Ciborowski, J.A.N., and Corkum, L. 1996. Inland dispersal of adult aquatic insects. *Freshwater Biology*, **36**: 265–276.
- Kraft, N.J.B. and Ackerly, D.D. 2010. Functional traits and phylogenetic tests of community assembly across spatial scales in an Amazonian forest. *Ecological Monographs*, **80**: 401–422.
- Kutty, S.N., Pape, T., Wiegmann, B.M., and Meier, R. 2010. Molecular phylogeny of the Calyptratae (Diptera: Cyclorrhapha) with an emphasis on the superfamily Oestroidea and the position of Mystacinobiidae and McAlpine's fly. *Systematic Entomology*, **35**: 614–635.
- Lafontaine, J.D. and Wood, D.M. 1988. A zoogeographic analysis of the Noctuidae (Lepidoptera) of Beringia, and some references about past Beringian habitats. *Memoirs of the Entomological Society of Canada*, **120**: 109–123.
- Laliberté, E., Legendre, P., and Shipley, B. 2014. FD: measuring functional diversity from multiple traits, and other tools for functional ecology. R package version 1.0-12. Available from <https://CRAN.R-project.org/package=FD> [accessed 16 March 2015].
- Lambkin, C.L., Sinclair, B.J., Pape, T., Courtney, G.W., Skevington, H., Meier, R., *et al.* 2013. The phylogenetic relationships among infraorders and superfamilies of Diptera based on morphological evidence. *Systematic Entomology*, **38**: 164–179.
- Lavorel, S., Grigulis, K., McIntyre, S., Williams, N.S.G., Garden, D., Dorrrough, J., *et al.* 2008. Assessing functional diversity in the field - methodology matters! *Functional Ecology*, **22**: 134–147.
- Legendre, P. and Gallagher, E.D. 2001. Ecologically meaningful transformations for ordination of species data. *Oecologia*, **129**: 271–280.
- Leibold, M.A., Holyoke, M., Monquet, N., Amarasekare, P., Chase, J.M., Hoopes, M.F., *et al.* 2004. The metacommunity concept: a framework for multi-scale community ecology. *Ecology Letters*, **7**: 601–613.
- Maddison, W.P. and Maddison, D.R. 2015. Mesquite: a molecular system for evolutionary analysis. Version 2.75. Available from <http://mesquiteproject.org> [accessed 15 March 2015].
- Magurran, A.E. 2004. *Measuring biological diversity*. Blackwell Publishing, Oxford, United Kingdom.
- Marshall, S.A. 1994. Peatland Sphaeroceridae (Diptera) of Canada. *Memoirs of the Entomological Society of Canada*, **169**: 173–179.
- Martin, Z. 2016. The species pool concept as a framework for studying patterns of plant diversity. *Journal of Vegetation Science*, **27**: 8–18.
- Mayfield, M.M. and Levine, J.M. 2010. Opposing effects of competitive exclusion on the phylogenetic structure of communities. *Ecology Letters*, **13**: 1085–1093.
- Meats, A. and Smallridge, C.J. 2007. Short- and long-range dispersal of medfly, *Ceratitis capitata* (Dipt. Tephritidae), and its invasive potential. *Journal of Applied Entomology*, **131**: 518–523.
- Mykrä, H., Tolkkinen, M., Markkola, A.M., Pirttilä, A.-M., and Muotka, T. 2016. Phylogenetic clustering of fungal communities in human-disturbed streams. *Ecosphere*, **7**: e01316.
- Nardi, F., Carapelli, A., Boore, J.L., Roderick, G.K., Dallai, R., and Frati, F. 2010. Domestication of olive fly through a multi-regional host shift to cultivated olives: comparative dating using complete mitochondrial genomes. *Molecular Phylogenetics and Evolution*, **57**: 678–686.
- National Wetlands Working Group 1997. *The Canadian Wetland Classification System*, Second edition. Edited by B.G. Warner and C.D.A. Rubec. Wetlands Research Centre, University of Waterloo, Waterloo, Ontario, Canada.
- O'Hara, R.B. 2005. Species richness estimators: how many species can dance on the head of a pin? *Journal of Animal Ecology*, **74**: 375–386.
- Økland, B., Götmark, F., Nördén, B., Franc, N., Kurina, O., and Polevoi, A. 2005. Regional diversity of mycetophilids (Diptera: Sciaroidea) in Scandinavian oak-dominated forests. *Biological Conservation*, **121**: 9–20.
- Oksanen, J., Blanchet, F.G., Kindt, R., Legendre, P., Minchin, P.R., O'Hara, R.B., *et al.* 2012. *Vegan: community ecology package*. R package version 2.0-4. Available from <http://CRAN.R-project.org/package=vegan> [accessed 23 January 2015].
- Pangjanda, S. and Pramual, P. 2016. Trait-based and phylogenetic community ecology of black flies (Diptera: Simuliidae) in tropical streams of Thailand. *Hydrobiologia*, **763**: 345–356.
- Pape, T., Blagoderov, V., and Mostovski, M.B. 2011. Order Diptera Linnaeus, 1758. *Zootaxa*, **3148**: 222–229.
- Patitucci, L.D., Mulieri, P.R., Schnack, J.A., and Mariluis, J.C. 2011. Species composition and heterogeneity of blowflies assemblages (Diptera: Calliphoridae) in urban–rural gradients at regional scale in Argentinean Patagonia. *Studies on Neotropical Fauna and Environment*, **46**: 49–58.
- Peres-Neto, P.R., Leibold, M.A., and Dray, S. 2012. Assessing the effects of spatial contingency and environmental filtering on metacommunity phylogenetics. *Ecology*, **93**: S14–S30.

- Petchey, O.L. and Gaston, K.J. 2002. Functional diversity (FD), species richness and community composition. *Ecology Letters*, **5**: 402–411.
- Pfenninger, M., Nowak, C., Kley, C., Steinke, D., and Streit, B. 2007. Utility of DNA taxonomy and barcoding for the inference of larval community structure in morphologically cryptic *Chironomus* (Diptera) species. *Molecular Ecology*, **16**: 1957–1968.
- Piwczynski, M., Szpila, K., Grzywacz, A., and Pape, T. 2014. A large-scale molecular phylogeny of flesh flies (Diptera: Sarcophagidae). *Systematic Entomology*, **39**: 783–799.
- Podani, J. 1999. Extending Gower's general coefficient of similarity to ordinal characters. *Taxon*, **48**: 331–340.
- Pollet, M. 2001. Dolichopodid biodiversity and site quality assessment of reed marshes and grasslands in Belgium (Diptera: Dolichopodidae). *Journal of Insect Conservation*, **5**: 99–116.
- Quantum GIS Development Team. 2012. Quantum GIS geographic information system. Open source geospatial foundation project. Available from <https://qgis.org/en/site> [accessed 6 May 2013].
- R Core Team. 2015. R: a language and environment for statistical computing. R Foundation for Statistical Computing, Vienna, Austria. Available from <http://www.R-project.org/> [accessed 24 May 2015].
- Rambaut, A., Suchard, M.A., Xie, D., and Drummond, A.J. 2014. Tracer v.1.6: MCMC trace analysis package. Available from <http://beast.bio.ed.ac.uk/Tracer> [accessed 24 May 2015].
- Ratnasingham, S. and Hebert, P.D.N. 2007. BOLD: the Barcode of Life Data system (www.barcodinglife.org). *Molecular Ecology Notes*, **7**: 355–364.
- Ricketts, T. and Imhoff, M. 2003. Biodiversity, urban areas, and agriculture: locating priority ecoregions for conservation. *Conservation Ecology*, **8**: article 1. Available from <https://www.ecologyandsociety.org/vol8/iss2/art1/inline.html> [accessed 20 May 2016].
- Ruhí, A., Boix, D., Gascón, S., Sala, J., and Batzer, D.P. 2013. Functional and phylogenetic relatedness in temporary wetland invertebrates: current macroecological patterns and implications for future climatic change scenarios. *Public Library of Science One*, **8**: e81739.
- Saito, V.S., Siqueira, T., and Fonseca-Gessner, A.A. 2015a. Should phylogenetic and functional diversity metrics compose macroinvertebrate multimetric indices for stream biomonitoring? *Hydrobiologia*, **745**: 167–179.
- Saito, V.S., Soininen, J., Fonseca-Gessner, A.A., and Siqueira, T. 2015b. Dispersal traits drive the phylogenetic distance decay of similarity in Neotropical stream metacommunities. *Journal of Biogeography*, **42**: 2101–2111.
- Savage, J., Wheeler, T.A., Moores, A.M.A., and Grégoire Taillefer, A. 2011. Effects of habitat size, vegetation cover, and surrounding land use on Diptera diversity in temperate Nearctic bogs. *Wetlands*, **31**: 125–134.
- Scheffer, S.J., Winkler, I.S., and Wiegmann, B.M. 2007. Phylogenetic relationships within the leaf-mining flies (Diptera: Agromyzidae) inferred from sequence data from multiple genes. *Molecular Phylogenetic and Evolution*, **42**: 756–775.
- Silver, C.A., Vamosi, S.M., and Bayley, S.E. 2012. Temporary and permanent wetland macroinvertebrate communities: phylogenetic structure through time. *Acta Oecologica*, **39**: 1–10.
- Siqueira, T., Bini, L.M., Roque, F.O., Couceiro, S.R.M., Trivinho-Strixino, S., and Cottenie, K. 2012. Common and rare species respond to similar niche processes in macroinvertebrate metacommunities. *Ecography*, **35**: 183–192.
- Soininen, J., McDonald, R., and Hillebrand, H. 2007. The distance decay of similarity in ecological communities. *Ecography*, **30**: 3–12.
- Solecki, A.M., Buddle, C.M., and Wheeler, T.A. 2016. Distribution and community structure of chloropid flies (Diptera: Chloropidae) in Nearctic glacial and post-glacial grasslands. *Insect Conservation and Diversity*, **9**: 358–368.
- Staddon, P., Lindo, Z., Crittenden, P.D., Gilbert, F., and Gonzalez, A. 2010. Connectivity, non-random extinction and ecosystem function in experimental metacommunities. *Ecology Letters*, **13**: 543–552.
- Teskey, H.J. and Burger, J.F. 1976. Larvae and pupae of eastern North American Tabanidae (Diptera). *The Canadian Entomologist*, **108**: 1085–1096.
- Tewksbury, J.J., Levey, D.J., Haddad, N.M., Sargent, S., Orrock, J.L., Weldon, A., *et al.* 2002. Corridors affect plants, animals, and their interactions in fragmented landscapes. *Proceedings of the National Academy of Sciences of the United States of America*, **99**: 12923–12926.
- Tóthová, A., Rozkošný, R., Knutson, L., Kutty, S.N., Wiegmann, B.M., and Meier, R. 2013. A phylogenetic analysis of Sciomyzidae (Diptera) and some related genera. *Cladistics*, **29**: 404–415.
- Townsend, C., Dolédec, S., and Scarsbrook, M. 1997. Species traits in relation to temporal and spatial heterogeneity in streams: a test of habitat template theory. *Freshwater Biology*, **37**: 367–387.
- Vieira, N.K.M., Clements, W.H., Guevera, L.S., and Jacobs, B.F. 2004. Resistance and resilience of stream insect communities to repeated hydrologic disturbances after a wildfire. *Freshwater Biology*, **49**: 1243–1259.
- Villéger, S., Mason, N.W.H., and Mouillot, D. 2008. New multidimensional functional diversity indices for a multifaceted framework in functional ecology. *Ecology*, **89**: 2290–2301.
- Vinson, M.R. and Hawkins, C.P. 1998. Biodiversity of stream insects: variation at local, basin, and regional scales. *Annual Review of Entomology*, **43**: 271–293.
- Webb, C.O. 2000. Exploring the phylogenetic structure of ecological communities: an example for rain forest trees. *American Naturalist*, **156**: 145–155.

- Webb, C.O., Ackerly, D.D., and Kembel, S.W. 2008. Phylocom: software for the analysis of phylogenetic community structure and trait evolution. *Bioinformatics*, **24**: 2098–2100.
- Webb, C.O., Ackerly, D.D., McPeck, M.A., and Donoghue, M.J. 2002. Phylogenies and community ecology. *Annual Review of Ecology and Systematics*, **33**: 475–505.
- Weiher, E., Freund, D., Bunton, T., Stefanski, A., Lee, T., and Bentivenga, S. 2011. Advances, challenges and a developing synthesis of community ecology theory. *Philosophical Transactions of the Royal Society B*, **366**: 2403–2413.
- Wiegmann, B.M., Trautwein, M.D., Winkler, I., Barr, N.W., Kim, J.-W., Lambkin, C., *et al.* 2011. Episodic radiations in the fly tree of life. *Proceedings of the National Academy of Sciences of the United States of America*, **108**: 5690–5695.
- Wulder, M.A., White, J.C., Cranny, M.M., Hall, R.J., Luther, J.E., Beaudoin, A.R., *et al.* 2008. Monitoring Canada's forests. Part 1: completion of the EOSD land cover project. *Canadian Journal of Remote Sensing*, **34**: 549–562.
- Yassin, A. 2013. Phylogenetic classification of the Drosophilidae Rondani (Diptera): the role of morphology in the postgenomic era. *Systematic Entomology*, **38**: 349–364.
- Yeates, D.K. and Wiegmann, B. (editors) 2005. *The evolutionary biology of flies*. Columbia University Press, New York, New York, United States of America.
- Yeomans, K.A. and Golder, P.A. 1982. The Guttman-Kaiser criterion as a predictor of the number of common factors. *Journal of the Royal Statistical Society. Series D (the Statistician)*, **31**: 221–229.