



Examination of outer-layer similarity in wall turbulence over obstructing surfaces

Zishen Chen¹ and Ricardo García-Mayoral^{1,†}

¹Department of Engineering, University of Cambridge, Trumpington Street, Cambridge CB2 1PZ, UK

(Received 24 May 2023; revised 16 September 2023; accepted 18 September 2023)

Turbulent flows over canopies of rigid filaments with different densities are studied using direct numerical simulations at moderate Reynolds numbers $Re_\tau \approx 550$ – 1000 . The canopies have heights $h^+ \approx 110$ – 220 , and are used as an instance of obstructing substrate for the assessment of outer-layer similarity. We show that conventional methods used to determine the zero-plane displacement Δy can be at odds with proper outer-layer similarity and may not be applicable for flows at moderate Re_τ . Instead, we determine Δy and the length and velocity scales that recover outer-layer similarity by minimising the difference between the smooth-wall and canopy diagnostic function everywhere above the roughness sublayer, not just in the logarithmic layer. In addition, we explore the possibility of the zero-plane displacement and the friction velocity being set independently, but find that outer-layer similarity is recovered more consistently when they are coupled. We observe that although the Kármán constant, κ may not have smooth-wall-like values, the flow statistics are smooth-wall-like in the logarithmic layer and above if the surface effect is limited within the near-wall region. This suggests a modified outer-layer similarity, where κ is not 0.39, but turbulence is otherwise smooth-wall-like. When the canopy is dense, the flow above the tips is essentially smooth-wall-like, with smooth-wall-like $\kappa \approx 0.39$ and origin essentially at the tip plane. For canopies with intermediate density, the overlying flow perceives a deeper zero-plane displacement into the canopy, which is consistent with observations reported by previous studies, but exhibits a lower Kármán constant, $\kappa \approx 0.34$ – 0.36 . For sparse canopies, κ tends back to its smooth-wall value, and the zero-plane displacement height is at the canopy bed. For all canopies studied, the decrease in κ never exceeds 15%, which is significantly less than that obtained in some previous works using conventional methods to assess outer-layer similarity.

Key words: turbulent boundary layers

† Email address for correspondence: r.gmayoral@eng.cam.ac.uk

1. Introduction and background

Turbulent boundary layers over rough and complex surfaces are ubiquitous and are of significant environmental and industrial interest. Surface roughness can induce significant frictional drag or pressure drop for flows in engineering settings, as summarised in the reviews by Flack & Schultz (2010, 2014), and Chung *et al.* (2021). Vegetation canopies are of great ecological importance to terrestrial and aquatic ecosystems, as reviewed by Finnigan (2000), Belcher, Harman & Finnigan (2012), Nepf (2012*a,b*) and Brunet (2020). Porous substrates are also present in a variety of settings (Wood, He & Apte 2020), such as river beds (Vollmer *et al.* 2002; Breugem, Boersma & Uittenbogaard 2006), heat exchangers (Lu, Stone & Ashby 1998; Dixon *et al.* 2012) and catalytic reactors (Lucci *et al.* 2017). In addition, engineered surfaces exposed to turbulent flows generally degrade and roughen due to erosion, fouling and cumulative damage (Wu & Christensen 2007). For these reasons, understanding the impact of complex surfaces on turbulence is essential for the modelling and control of practical flows, and to improve environmental and engineering practices.

The surface topology has a direct impact on the flow within the roughness sublayer, which generally extends up to 2–3 roughness heights h , or spacings s , above the roughness crests, depending on the density regime (Jiménez 2004; MacDonald *et al.* 2018; Brunet 2020). Above this height, it is accepted widely that the turbulence is essentially undisturbed and exhibits outer-layer similarity (Hama 1954; Clauser 1956; Townsend 1976). The only effect is then a constant shift ΔU^+ in the mean-velocity profile, while both the Kármán constant, $\kappa \approx 0.39$, and the wake region remain unaffected. Experimental evidence of outer-layer similarity was provided by Perry & Abell (1977) and Andreopoulos & Bradshaw (1981), who reported smooth-wall-like mean-velocity profiles and turbulent statistics in the outer layer for flows over rough walls. The recovery of outer-layer similarity has also been observed in flows over a wide range of surface topologies, including two-dimensional ribs and grooves (Krogstad *et al.* 2005; Leonardi, Orlandi & Antonia 2007; MacDonald *et al.* 2018; Zhang, Huang & Xu 2020), sand grain (Flack, Schultz & Shapiro 2005; Connelly, Schultz & Flack 2006; Amir & Castro 2011; Flack & Schultz 2023), prismatic roughness (Castro 2007; Yang *et al.* 2016; Sadique *et al.* 2017; Placidi & Ganapathisubramani 2018; Sharma & García-Mayoral 2020*a*; Xu *et al.* 2021) and practical rough surfaces (Shockling, Allen & Smits 2006; Allen *et al.* 2007; Wu & Christensen 2007). Jiménez (2004) argued that the recovery of outer-layer similarity relies on a large-scale separation $h/\delta < 1/40$, where δ is the boundary layer thickness. Numerical studies of roughness and riblets have nevertheless observed outer-layer similarity for roughness with larger blockage ratios, $h/\delta = 1/8$ for cubes in an open channel, and $h/\delta = 1/7$ for sinusoidal roughness in a pipe (Leonardi & Castro 2010; García-Mayoral & Jiménez 2011; Chan *et al.* 2015; Abderrahaman-Elena, Fairhall & García-Mayoral 2019; Sharma & García-Mayoral 2020*a*). As summarised in Chung *et al.* (2021), the smooth-wall similarity in the wake region remains robust and holds even for intrusive roughness with $h/\delta \gtrsim 0.15$. In this obstacle regime (Jiménez 2004), the protruding surface effect can completely disrupt similarity in the logarithmic layer, but the similarity is still recovered in the outer wake region (Flack & Schultz 2010, 2014).

Studies of wall-bounded turbulence have provided the tools for analysing and modelling rough-wall flows, with engineering models that treat roughness as a small perturbation to the smooth-wall flow (Flack *et al.* 2005; Flack, Schultz & Connelly 2007). However, if the roughness-induced perturbation propagates into the outer layer, then the scaling based on smooth-wall similarity could result in inaccurate predictions for turbulent statistics and integral quantities. Understanding the extent of roughness effects and whether smooth-wall

similarity holds true is therefore of great importance to various applications. Townsend (1976) proposed the outer-layer similarity hypothesis, articulating that at a sufficiently high Reynolds number, essentially the turbulent eddies in the outer layer would be unaffected by the surface topology. The surface affects the flow only through providing the relevant scales, the wall shear stress τ_w , or the friction velocity $u_\tau = (\tau_w/\rho)^{1/2}$, and the characteristic length scale provided by the wall-normal distance to the wall, y . Townsend's hypothesis is essentially a dimensional argument stating that given $\delta^+ \gg 1$ and $h/\delta \ll 1$, surface effects are confined within the roughness sublayer, thus the only relevant scales for the flow above are u_τ and y , independent of the surface topology. Note that u_τ and y are well defined for smooth-wall flows but may not be estimated easily for flows over rough and complex surfaces where the 'wall' is not obvious (Schultz & Flack 2007; Squire *et al.* 2016).

The canonical logarithmic form of the mean-velocity profile is

$$U^+ = \frac{1}{\kappa} \log(y^+ + \Delta y^+) + A - \Delta U^+, \quad (1.1)$$

where κ is the Kármán constant, with $\kappa \approx 0.39$ if outer-layer similarity recovers, A is the log-law intercept for a smooth-wall flow, ΔU^+ is the velocity deficit caused by the drag induced by surface roughness, y^+ is the wall-normal distance, and Δy^+ is the zero-plane displacement that recovers outer-layer similarity for the mean-velocity profile U^+ . Typically, the displacement Δy^+ is measured from the roughness tip or trough, and the zero-plane displacement height $y^+ = -\Delta y^+$ corresponds to the height of the origin perceived by the outer-layer flow (Breugem *et al.* 2006; Manes, Poggi & Ridolfi 2011).

Despite substantial evidence that supports Townsend's outer-layer similarity hypothesis in the presence of diverse surface topologies, some experimental studies cast doubt on its universal validity, reporting that the roughness effects can extend well into the outer layer (Krogstad, Antonia & Browne 1992; Krogstad & Antonia 1999; Tachie, Bergstrom & Balachandar 2003; Bhaganagar, Kim & Coleman 2004). In these works, it was observed that the presence of roughness alters significantly the intensities of turbulent fluctuations, especially the wall-normal velocity fluctuations and Reynolds shear stress, and the mean-velocity profile even in the wake region. Additionally, recent experimental and numerical studies for turbulent flows over rough and complex surfaces, as summarised in table 1, have reported the existence of a logarithmic layer but with values for κ , logarithmic slope, very different from the smooth-wall value $\kappa_s \approx 0.39$. Moreover, for studies with $\delta^+ \approx 1000$ – $10\,000$ and $h/\delta \ll 1$, a decrease in κ is still observed with an increase in Reynolds number for the same roughness, suggesting an in-depth modification of the flow by the substrates (Suga *et al.* 2010; Manes *et al.* 2011; Fang *et al.* 2018; Okazaki *et al.* 2021, 2022). Some studies have observed that permeable roughness could lead to an approximately 50% drop in κ , which is more substantial than that induced by the impermeable roughness with the same geometry, implying that permeability may enhance the extent and intensity of roughness effects (Okazaki *et al.* 2021, 2022; Esteban *et al.* 2022; Karra *et al.* 2022). Nevertheless, the prediction of u_τ , which is of great importance for the assessment of outer-layer similarity, remains a challenge in experiments (Chung *et al.* 2021). Generally, u_τ is evaluated at the zero-plane displacement height, which is typically between the tip and trough of the obstacles, and u_τ is therefore not necessarily given by the total drag τ_w exerted on the surface. Depending on flow conditions and apparatus, uncertainties in u_τ and turbulent statistics are typically $\sim \pm 1$ – 5% (Schultz & Flack 2007, 2013; Squire *et al.* 2016).

Studies	Wall	Roughness	δ^+	$\sqrt{K^+}$	k_s^+	κ
B06	IPW	Packed bed	353–678	0.31–9.35	0.11–49.6	0.23–0.40
S10	IPW	Foamed ceramics	150–1086*	0.81–11.05	0.3–63.0	0.23–0.39
M11	IPW	Polymer foam	1856–5840	1.9–17.2	—	0.31–0.33
R17	IW	Elastic wall	180.8–307.0	—	—	0.20–0.36
K17	APW/IPW	Pore arrays	120–399	0–11.6	0–19	0.21–0.41
S20	APW/IPW	Spheres	395	2.62	—	0.32–0.33
K21	APW	Spanwise rods	150–1137	3.5–25.9	0.4–60.9	0.21–0.40
K23	APW/IW	Spheres	270–943	2.56–8.94	6.57–34.35	0.29–0.33
E22	IW	Riblets	850–3840	—	—	0.30–0.37
F18	IPW	Spheres	862–10 174	0.7–109	108–295*	0.32–0.34*
	IW	Hemisphere	986.8	—	10.6	0.41
O21	IW	Solid ribs/grooves	160–2100	—	642–1831	0.38–0.41
	IW	Porous ribs/grooves	380–1730	1.7–16.0	185–1049	0.19–0.29
O22	IW	Solid ribs	220–2050	—	17–1850	0.38–0.41
	IW	Porous ribs	240–1780	1.0–17.0	38–1340	0.22–0.33

Table 1. Studies that observe the modification of the logarithmic layer by the surface topology. The wall types are IPW (isotropic permeable wall), APW (anisotropic permeable wall) and IW (impermeable wall). Here, δ^+ , $\sqrt{K^+}$, k_s^+ and κ are the reported friction Reynolds number ($\delta^+ = \delta u_\tau / \nu$, where δ is the boundary layer thickness or channel half-height, u_τ is the characteristic friction velocity and ν is the kinematic viscosity), permeability Reynolds number ($\sqrt{K^+} = \sqrt{K} u_\tau / \nu$, where K is the permeability), roughness height ($k_s^+ = k_s u_\tau / \nu$, where k_s is the equivalent sand grain roughness height) and Kármán constant (κ). The abbreviations for the studies are B06 (Breugem *et al.* 2006), S10 (Suga *et al.* 2010), M11 (Manes *et al.* 2011), R17 (Rosti & Brandt 2017), K17 (Kuwata & Suga 2017), S20 (Shen, Yuan & Phanikumar 2020), K21 (Kazemifar *et al.* 2021), K23 (Karra *et al.* 2022), E22 (Endrikat *et al.* 2022), F18 (Fang *et al.* 2018), O21 (Okazaki *et al.* 2021) and O22 (Okazaki *et al.* 2022). Note that δ^+ denoted by * is estimated from k_s^+ and k_s/δ from S10. The values for k_s^+ and κ from F18, denoted by *, were provided for only some of their cases.

Recent studies carried out by Tuerke & Jiménez (2013) and Lozano-Durán & Bae (2019) suggest that the scaling for wall turbulence is essentially local, and is set by the local mean shear and production rate of turbulent kinetic energy, with no explicit reference to the wall-normal distance y . This implies that the traditional scaling based on y and u_τ happens to hold because of the one-to-one correspondence between the latter and the local production and shear, but this correspondence does not need to hold necessarily for flows over non-smooth walls. As part of this work, we investigate, for flows that exhibit an apparent loss of outer-layer similarity, whether the local scale can still have correspondence to a friction velocity u_τ^* and a length scale y_* , where y_* is the wall-normal distance to the zero-plane displacement height, $y_* = 0$, but u_τ^* is not necessarily evaluated at $y_* = 0$. In this work, superscript \star denotes wall units defined by ν and u_τ^* decoupled from $y_* = 0$, and superscript $+$ denotes wall units defined by ν and u_τ^* evaluated at $y_* = 0$. Subscript $*$ denotes outer units that are normalised by the bulk velocity U_b and outer length scale y_* .

The diagnostic function of the mean-velocity profile in (1.1) is

$$\beta = y_*^+ \frac{\partial U^+}{\partial y_*^+}, \tag{1.2}$$

where $y_* = (y + \Delta y)/(\delta + \Delta y)$ is the wall-normal distance from the zero-plane displacement height at $y_* = 0$, which would exhibit a plateau $\beta \approx 1/\kappa$ in the logarithmic layer if outer-layer similarity recovers (Mizuno & Jiménez 2011; Luchini 2018).

This diagnostic function is useful because deviations from the log-law profile are typically more apparent in β in (1.2) than in U^+ in (1.1). Many previous studies therefore rely on the existence of this plateau in β to determine the extent of the logarithmic layer and the inner scaling for flows over roughness (Breugem *et al.* 2006; Suga *et al.* 2010). Particularly, the linear relation between U^+ and $\log(y_*^+)$ in (1.1) is enforced by choosing a Δy that yields a plateau in $\beta(y_*^+)$. The inner velocity and length scales are then determined based on u_τ^* evaluated at the reference height, $y_* = 0$, yielding values for κ that are not necessarily smooth-wall like, as listed in table 1. However, a logarithmic layer with a plateau in β emerges only in flows at very high Re_τ (Lee & Moser 2015; Hoyas *et al.* 2022). More importantly, outer-layer similarity, by definition, refers to the similarity in not just the logarithmic layer but also the wake, the whole outer region. In the present work, we argue that for flows at all but the highest Re_τ , neglecting smooth-wall similarity in the wake region while enforcing a plateau in the diagnostic function could result in spurious predictions of parameters, including Δy , u_τ^* and κ , and friction-scaled turbulent statistics. In this study, we determine the zero-plane displacement Δy by minimising the deviation compared to a smooth-wall flow of the diagnostic function not only in the logarithmic layer but also above. We assess the validity as a scaling velocity of the friction velocity u_τ^* and u_τ^* , both measured at the height of zero-plane displacement and set as an independent, free parameter. Additionally, we examine whether the value of κ is modified by the type of surface or not. We probe the existence of outer-layer similarity in an extensive dataset of canopy flows. This choice is motivated by canopies being an instance of porous-like complex surfaces that are particularly obstructing and intrusive to the flow (Ghisalberti 2009).

The paper is organised as follows. The numerical method and relevant canopy parameters are presented in §2. Results, with particular emphasis on scaling for the outer-layer turbulence, are discussed in §3. Finally, the conclusions are summarised in §4.

2. Direct numerical simulations

We present results for a series of direct numerical simulations (DNS) of closed and open channels with canopies of rigid filaments covering the walls at moderate Reynolds numbers $Re_\tau \approx 500$ –1000. We note that these Re_τ are sufficiently high for convective effects to be dominant, such that the interpretation of the turbulent statistics in these canopy flows may be extrapolated to cases with higher Re_τ (Sharma & García-Mayoral 2020a). The streamwise, spanwise and wall-normal directions are x , z and y , respectively. A schematic of the numerical domain is portrayed in figure 1. The dimensions of the closed channels are $L_x \times L_z \times L_y = 2\pi\delta \times \pi\delta \times 2(\delta + h)$, where h is the canopy height, and $\delta = 1$ is the distance between the channel centre and the canopy-tip planes. The canopy region is below $y = 0$ for the bottom wall, and above $y = 2\delta$ for the top wall. This domain size is large enough to reproduce the one-point statistics for the friction Reynolds numbers considered in this study, without imposing artificial constraints on the largest turbulent eddies (Lozano-Durán & Jiménez 2014).

We vary the canopy density by changing the spacing between elements, resulting in frontal densities $\lambda_f \approx 0.01$ –2.04, defined as the ratio between the frontal area of the obstacles and the total plan area. This covers a broad range from sparse to dense canopies based on the notional limit $\lambda_f \approx 0.1$ proposed by Nepf (2012a). All canopies in the closed channel consist of collocated prismatic posts with thickness $\ell_x^+ = \ell_z^+ \approx 24$ and height $h^+ \approx 110$. Relevant simulation parameters are listed in table 2. For the canopy simulations, letters C and O denote closed and open channels, and the number that follows

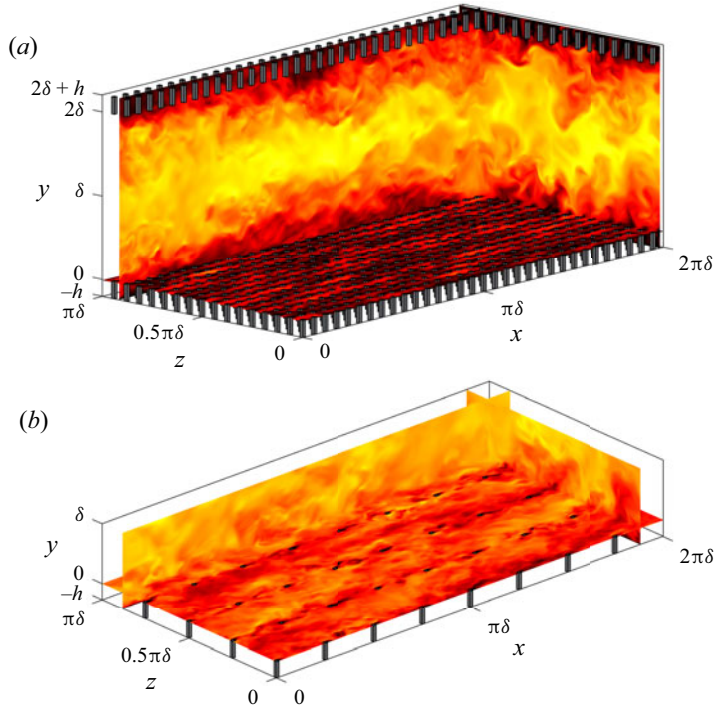


Figure 1. Schematics of the numerical domains of (a) full-channel case C108₅₅₀ and (b) open-channel case O400₅₅₀. An instantaneous realisation of the streamwise velocity is shown in the orthogonal planes.

denotes the approximate spacing, $s^+ = L_x^+/n_x = L_z^+/n_z$, between the canopy elements, where n_x and n_z are the numbers of elements in the streamwise and spanwise directions, respectively. The number in the subscript is the approximate friction Reynolds number of the flow. Cases C216₉₀₀, C288₉₀₀ and C432₉₀₀ conducted at $Re_\tau \approx 900$ match the geometry parameters s^+ , l^+ and h^+ of the sparse and intrusive cases C216₅₅₀, C288₅₅₀ and C432₅₅₀ in inner units, respectively. These cases at high Reynolds numbers are conducted to verify that outer-layer similarity can recover, even for flows over intrusive textures, provided that there is a large enough core flow unperturbed by the roughness. Cases C₅₅₀, C₆₀₀, C₉₀₀, O₅₅₀ and O₁₀₀₀ are reference smooth-wall simulations.

The DNS of sparse canopies, $\lambda_f \approx 0.01$, from Sharma & García-Mayoral (2020a), are included for the assessment of outer-layer similarity in open-channel flows. These channels are bounded by a bottom no-slip wall and a top free-slip surface at $y = \delta$, as shown in figure 1(b). Case O400₅₅₀ consists of prismatic posts with sides $\ell_x^+ = \ell_z^+ \approx 20$ and height $h^+ \approx 110$. The canopy of O400₁₀₀₀ matches the dimensions of O400₅₅₀ in inner units, with thickness $\ell_x^+ = \ell_z^+ \approx 20$ and height $h^+ \approx 110$, while the canopy of C800₁₀₀₀ matches the dimensions of O400₅₅₀ in outer units, with thickness $\ell_x/\delta = \ell_z/\delta \approx 0.04$ and height $h/\delta \approx 0.2$. The reference friction velocity u_τ in table 2 is calculated from the total shear stress at the canopy tips for the full-channel cases, and from the net drag for the open-channel cases. This is the reference friction velocity used in $Re_\tau = \delta u_\tau/\nu$ and in the other friction-scaled variables discussed in this section.

The DNS code implemented in this study is from Sharma & García-Mayoral (2020a,b) and has been validated in Sharma (2020). It is summarised here for reference. The numerical method solves the three-dimensional incompressible Navier–Stokes

	Case	Re_τ	λ_f	$N_x \times N_z$	s/h	Δx^+	Δz^+	Δy_f^+	Δy_t^+
Channel flow	C ₅₅₀	550.6	—	—	—	9.01	4.50	0.27	—
	C ₆₀₀	603.3	—	—	—	8.77	4.39	0.29	—
	C ₉₅₀	950.2	—	—	—	7.77	3.89	0.32	—
	C36 ₅₅₀	550.3	2.04	96 × 48	0.33	2.00	2.00	2.95	0.50
	C54 ₅₅₀	550.1	0.91	64 × 32	0.49	3.00	3.00	2.53	0.50
	C72 ₅₅₀	551.9	0.51	48 × 24	0.65	4.01	4.01	2.01	1.00
	C108 ₅₅₀	548.5	0.23	32 × 16	0.98	5.98	2.99	2.00	1.00
	C144 ₅₅₀	547.0	0.13	24 × 12	1.31	5.97	2.98	1.19	1.19
	C216 ₅₅₀	549.0	0.06	16 × 8	1.96	5.99	2.99	1.00	1.00
	C288 ₅₅₀	547.9	0.03	12 × 6	2.62	5.98	2.99	0.79	0.79
	C432 ₅₅₀	548.9	0.01	8 × 4	3.93	5.99	2.99	0.60	0.60
	C216 ₉₀₀	895.1	0.06	32 × 16	1.96	8.26	4.13	1.1	1.1
	C288 ₉₀₀	895.7	0.03	24 × 12	2.62	8.26	4.13	1.1	1.1
	C432 ₉₀₀	892.4	0.01	16 × 8	3.93	8.26	4.13	1.1	1.1
Open-channel flow	O ₅₅₀	537.1	—	—	—	8.79	4.39	0.21	—
	O ₁₀₀₀	994.6	—	—	—	8.14	4.07	0.32	—
	O400 ₅₅₀	529.7	0.01	8 × 4	3.65	4.33	4.33	0.20	1.77
	O400 ₁₀₀₀	1062.4	0.01	16 × 8	3.53	4.35	4.35	0.35	2.76
	O800 ₁₀₀₀	1001.8	0.01	8 × 4	3.61	4.10	4.10	0.33	3.45

Table 2. Simulation parameters: $Re_\tau = \delta u_\tau / \nu$ is the friction Reynolds number based on ν , δ and u_τ evaluated at the canopy tips; λ_f is the frontal density; N_x and N_z are the numbers of canopy elements in the streamwise and spanwise directions, respectively; h and s are the canopy height and the spacing in the streamwise and spanwise directions; Δx^+ and Δz^+ are the streamwise and spanwise resolutions; Δy_f^+ and Δy_t^+ are the wall-normal resolutions at the floor and canopy tips. The wall-normal resolution is validated in the [Appendix](#) for reference. The O₅₅₀ and open-channel canopy cases are from Sharma & García-Mayoral (2020a).

equations

$$\frac{\partial \mathbf{u}}{\partial t} + \mathbf{u} \cdot \nabla \mathbf{u} = -\nabla p + \frac{1}{Re} \nabla^2 \mathbf{u}, \quad (2.1)$$

$$\nabla \cdot \mathbf{u} = 0, \quad (2.2)$$

where \mathbf{u} is the velocity vector $\langle u, w, v \rangle$ with components in the streamwise, spanwise and wall-normal directions, respectively, p is the kinematic pressure, and Re denotes the bulk Reynolds number $Re = U_b \delta / \nu$ based on U_b , δ and the kinematic viscosity ν . No-slip and no-penetration boundary conditions are enforced at both walls. The canopy elements are resolved explicitly using a direct-forcing, immersed-boundary method (Iaccarino & Verzicco 2003; García-Mayoral & Jiménez 2011). The numerical domain is periodic in the wall-parallel directions, which are discretised spectrally. A second-order central difference scheme on a staggered grid is used in the wall-normal direction to avoid the ‘chequerboard’ problem (Ferziger & Perić 2002). The wall-normal grid is stretched with $\Delta y_{max}^+ \approx 4.5$ at the channel centre for the closed-channel simulations. For the open-channel simulations, $\Delta y_{max}^+ \approx 2.2$ when $Re_\tau \approx 550$, and $\Delta y_{max}^+ \approx 5.3$ when $Re_\tau \approx 1000$. The Δy_{min}^+ value occurs at the floor or tips, wherever the mean shear is the highest; $\Delta y_{min}^+ \approx 0.5$ – 1 is at the tips for the intermediate to dense canopies ($\lambda_f \gtrsim 0.1$), and $\Delta y_{min}^+ \approx 0.3$ – 0.8 is at the floor for the sparse canopies ($\lambda_f \lesssim 0.1$). The wall-normal grid resolutions are listed in [table 2](#).

The typical wall-parallel resolutions are $\Delta x^+ \lesssim 8$ and $\Delta z^+ \lesssim 4$ for the DNS of smooth-wall turbulent flows (Jiménez & Moin 1991). However, for the filament canopies

considered in this study, the element-induced eddies are typically of the order of or smaller than the element thickness (Poggi *et al.* 2004). Therefore, the wall-parallel grids are smaller than ℓ_x^+ and ℓ_z^+ to resolve the eddies induced by the canopy elements, as presented in table 2. To resolve the turbulence within and above the roughness sublayer without inducing excess computational cost, the numerical domain is partitioned into blocks with different wall-parallel resolutions (García-Mayoral & Jiménez 2011). The blocks that contain the roughness sublayer have a more refined resolution than the block encompassing the channel centre. In the fine blocks, the grid resolution resolves not just the turbulent scales but also the canopy geometry and element-induced eddies. The height of these blocks is chosen such that the small and rapid element-induced eddies diffuse naturally and damp out before reaching the coarse block at the channel centre, which has a standard $\Delta x^+ \approx 8$ and $\Delta z^+ \approx 4$ resolution. This is verified *a posteriori* by examining the spectral densities of turbulent fluctuations near the interface to ensure that any small-wavelength signal has already vanished.

The time advancement uses a fractional-step method with a three-substep Runge–Kutta scheme where pressure is corrected to enforce incompressibility (Le & Moin 1991; Perot 1993):

$$\left[I - \Delta t \frac{\beta_k}{Re} L \right] \mathbf{u}_k^n = \mathbf{u}_{k-1}^n + \Delta t \left[\frac{\alpha_k}{Re} L \mathbf{u}_{k-1}^n - \gamma_k N \mathbf{u}_{k-1}^n - \zeta_k N \mathbf{u}_{k-2}^n - (\alpha_k + \beta_k) G p_k^n \right], \tag{2.3}$$

$$DG\phi_k^n = \frac{1}{\Delta t (\alpha_k + \beta_k)} D\mathbf{u}_k^n, \tag{2.4}$$

$$\mathbf{u}_{k+1}^n = \mathbf{u}_k^n - \Delta t (\alpha_k + \beta_k) G\phi_k^n, \tag{2.5}$$

$$p_{k+1}^n = p_k^n + \phi_k^n, \tag{2.6}$$

where $k = 1, 2, 3$ are the Runge–Kutta substeps (e.g. $u_0^0 = u^0$, $u_3^0 = u^1$), Δt is the time step, I is the identity matrix, L , G and D are the discretised Laplacian, gradient and divergence operators, N is the advective term dealiased with the 2/3-rule (Canuto *et al.* 2012), and α_k , β_k , γ_k and ζ_k are the integration coefficients adapted from Le & Moin (1991). The channel is driven by a constant mean pressure gradient, with the flow rate adjusted to obtain the targeted friction Reynolds number. Each simulation is run for at least 10 largest eddy turnover times, δ/u_τ , to wash out any initial transients. Once the flow reaches a statistically steady state, statistics are collected over another $20\delta/u_\tau$.

3. Results and discussion

In this section, we present and discuss the scaling for the outer-layer flow, aiming to show that for canopy flows that exhibit an apparent loss of outer-layer similarity, a modified outer-layer similarity can be recovered when using the appropriate velocity and length scales.

3.1. Depth of roughness layer

Before we set out to investigate outer-layer similarity, it is important to establish a lower bound for y from which it can be expected to hold. In the immediate vicinity of a complex surface, the flow cannot be expected to be universal, but will be specific to the particular surface topology. Outer-layer similarity should not be expected within the roughness sublayer, where turbulence is perturbed directly by the element-induced flow. Thus we

first need to identify the height above which the direct effect of the texture, manifesting as a texture-coherent signature in the flow field, vanishes effectively. The height of the roughness sublayer, assumed here to be the height beyond which the element-induced flow vanishes, is generally a function of the element spacing or height, depending on the density regime (Jiménez 2004; Brunet 2020). On the basis of canopy geometry and configuration, the frontal density λ_f gives a notional measure of canopy density (Wooding, Bradley & Marshall 1973; Nepf 2012a). For conventional sparse canopies ($\lambda_f \lesssim 0.1$) with element spacing larger than height, the roughness sublayer thickness is typically a function of the canopy height (Poggi *et al.* 2004; Flack *et al.* 2007; Abderrahaman-Elena *et al.* 2019; Sharma & García-Mayoral 2020a). However, for dense canopies ($\lambda_f \gtrsim 0.5$), the flow within the obstacles is ‘sheltered’ from the turbulent flow as the elements interact with turbulence only in the vicinity of the tips, thus the height of the roughness sublayer depends on the element spacing (MacDonald *et al.* 2018; Placidi & Ganapathisubramani 2018; Sharma & García-Mayoral 2020b). In the very dense limit, where the element spacings are vanishingly small, the eddies are essentially precluded from penetrating within the texture, and the overlying flow essentially perceives a smooth wall at the tips (Brunet 2020; Sharma & García-Mayoral 2020b).

To measure the extent of roughness effects, here we quantify the intensity of the element-induced flow using the standard triple decomposition (Reynolds & Hussain 1972)

$$\mathbf{u}(x, y, z, t) = \mathbf{U}(y) + \mathbf{u}'(x, y, z, t), \quad (3.1)$$

$$\mathbf{u}'(x, y, z, t) = \tilde{\mathbf{u}}(x, y, z) + \mathbf{u}''(x, y, z, t), \quad (3.2)$$

where \mathbf{u} is the full instantaneous velocity vector field $\langle u, w, v \rangle$, \mathbf{U} is the mean-velocity profile, and \mathbf{u}' is the full temporal and spatial turbulent fluctuation, decomposed into a time-averaged but spatially varying component $\tilde{\mathbf{u}}$ and the remaining time-varying fluctuation \mathbf{u}'' . Here, \mathbf{U} is the velocity averaged in time and in the wall-parallel directions, and $\tilde{\mathbf{u}}$, often termed the dispersive flow (Castro *et al.* 2021; Modesti *et al.* 2021), is obtained from the average of the flow in time only. Therefore, the root-mean-square (r.m.s.) of $\tilde{\mathbf{u}}$ at each height gives a measure of the intensity of the coherent spatial fluctuation induced by the canopy elements. Abderrahaman-Elena *et al.* (2019) argued that $\tilde{\mathbf{u}}$ does not contain the whole element-coherent signal, but it nevertheless gives a good measure of its intensity.

As shown in figure 2, the intensity of the element-induced fluctuations decays exponentially with y above the tips. A similar decaying pattern has been observed in flows over superhydrophobic surfaces (Seo, García-Mayoral & Mani 2015), three-dimensional sinusoidal roughness (Chan *et al.* 2018), prismatic roughnesses (Abderrahaman-Elena *et al.* 2019) and filament canopies (Sharma & García-Mayoral 2020b). The cause can be traced to the pressure in this region satisfying a Laplace equation with two components, one forced by the nonlinear terms of the overlying flow, which is essentially texture-incoherent, and the other forced by the effective boundary conditions at $y = 0$, induced by the texture. The latter then takes the form $\sim e^{-y/\lambda}$ for each excited wavelength, for which the first texture harmonic, $\lambda = s$, decays more slowly and dominates (Kamrin, Bazant & Stone 2010; Seo *et al.* 2015). The velocities satisfy in turn their own corresponding Laplace equations, with additional source terms from this texture-induced pressure, leading to similar exponential decays. Figure 2 evidences this exponential decay with y/s , which is particularly clear for the pressure, as well as for the wall-normal velocity, and to a lesser extent for the tangential velocities, which is to be expected given their more intense source terms in their respective Laplace equations.

For all canopies considered, the texture-coherent pressure and velocity fluctuations essentially vanish at approximately one canopy spacing above the tips, as depicted in

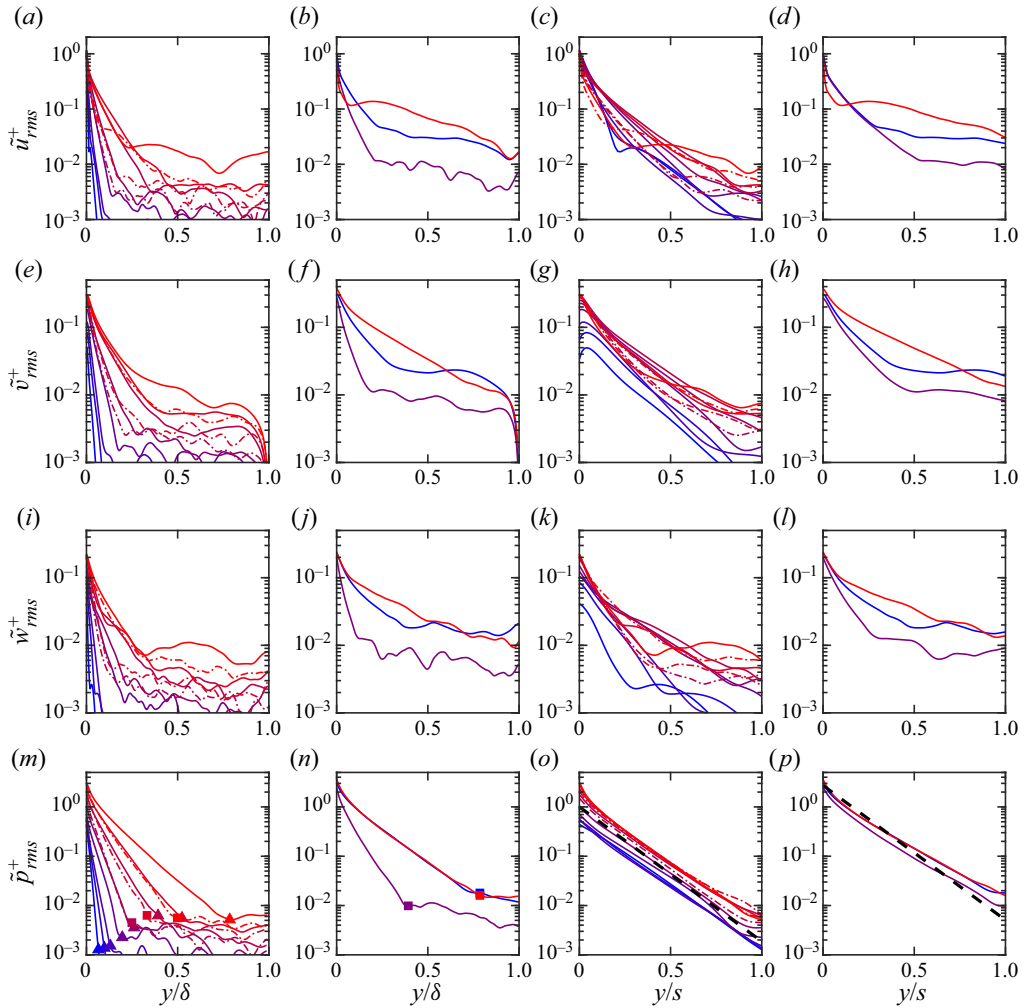


Figure 2. The r.m.s. velocity and pressure fluctuations of the element-induced, dispersive flow normalised by u_τ evaluated at the canopy tips: (a,e,i,m) and (c,g,k,o) full-channel cases; (b,f,j,n) and (d,h,l,p) open-channel cases. The solid lines from blue to red are cases C36₅₅₀ to C432₅₅₀ in the first and third columns, and cases O400₅₅₀, O400₁₀₀₀ and O800₁₀₀₀ in the second and fourth columns; the dashed-dotted lines represent the cases at $Re_\tau \approx 900$ with the same canopy layouts as the solid lines of the same colour, i.e. cases C216₉₀₀, C288₉₀₀ and C432₉₀₀, corresponding to cases C216₅₅₀, C288₅₅₀ and C432₅₅₀. The square markers represent height $y = s$ for cases at $Re_\tau \approx 550$, and the triangle markers represent that for cases at $Re_\tau \approx 900$ –1000.

figure 2. However, this implies that the sparse ($\lambda_f \lesssim 0.1$) and tall ($h \approx 0.2\delta$) canopies, C216₅₅₀, C288₅₅₀, C432₅₅₀, O400₅₅₀ and O800₁₀₀₀, are significantly more intrusive to the overlying flow compared to the other canopies with either intermediate to high density ($\lambda_f \gtrsim 0.1$) or small height ($h \approx 0.1\delta$), as their element-induced flows penetrate into the channel as far as $y \approx 0.5\delta$, or even beyond. This implies that the roughness sublayer of these intrusive canopies can extend well into the overlying flow and reach the channel centre. Sharma & García-Mayoral (2020b) have reported a similar behaviour for the element-induced flow over dense canopies, for which the element-induced velocity fluctuations become negligible at one canopy spacing above the tips regardless of the canopy height. However, their element-induced flows caused a more profound modification

of the background turbulence, which became smooth-wall-like only at heights $y/s > 2 - 3$ above the tips. For the present flows, however, it will be demonstrated in §§ 3.3 and 3.4 that for the cases that exhibit it, outer-layer similarity recovers above a roughness sublayer that extends only to a height $y/s \approx 1$ above the tips.

3.2. Logarithmic velocity profiles over smooth and rough walls

In this subsection, we discuss and appraise the conventional methods used to assess the existence of a logarithmic layer, and find the zero-plane displacement height $y_* = 0$ that sets the velocity and length scales u_τ^* and y_* for turbulent flows over roughness. Generally, their values are determined by using the total drag (Jackson 1981; Raupach 1992; Cheng *et al.* 2007; Leonardi & Castro 2010; Squire *et al.* 2016), by fitting U^+ to be proportional to $\log(y_*^+)$ in the logarithmic layer (Clauser 1956; Flack & Schultz 2014), or by, equivalently, enforcing a plateau in β (Breugem *et al.* 2006; Suga *et al.* 2010; Manes *et al.* 2011).

In experiments, generally, friction velocity and zero-plane displacement height are estimated based on the total drag exerted on the surface, as summarised in Chung *et al.* (2021). For small and sparsely distributed roughness, where the overlying flow penetrates all the way to the floor, this method generally yields u_τ^* and Δy that recover outer-layer similarity (Flack *et al.* 2005; Wu & Christensen 2007; Schultz & Flack 2013). However, for dense and tall roughness, the total drag method could result in non-physical prediction for both u_τ^* and Δy . The element-induced drag is significant for dense roughness, therefore the point of action of the total drag, $\Delta y = \int_h D(y) y dy / \int_h D(y) dy$ (Jackson 1981), is located at an intermediate point in the roughness sublayer. However, DNS of dense filament canopies have illustrated that the zero-plane displacement height approaches the tips as the overlying turbulence interacts only with the upper part of the obstacles and cannot perceive the floor (Brunet 2020; Sharma & García-Mayoral 2020*b*). In turn, for sparse canopies, the zero-plane displacement height approaches the floor, even when most of the drag is still exerted by the canopy elements (Sharma & García-Mayoral 2020*a*). Consequently, the total drag may not necessarily be relevant directly for the assessment of outer-layer similarity and the estimates of the zero-plane displacement Δy and the friction velocity evaluated at $y_* = 0$, u_τ^* .

Hama (1954) and Clauser (1956) noted that generally, roughness leads to a downward but otherwise parallel shift ΔU^+ in the mean-velocity profile. It stems from this that Δy and u_τ^* can be obtained by matching the shape of the mean-velocity profile over roughness U^+ to $\log(y_*^+)$, assuming that the latter represents accurately the corresponding smooth-wall profile. This matching is usually done iteratively. Figures 3(*e,f*) illustrate how, for the flows over our canopies, U^+ can be made logarithmic by selecting a suitable value of Δy and taking u_τ^* based on the total shear stress at the zero-plane displacement height. However, U^+ is not exactly logarithmic even in the logarithmic layer of a smooth-wall flow, so matching U^+ to $\log(y_*^+)$ as in figures 3(*e,f*) is different from matching U^+ to the smooth-wall profile in the logarithmic layer as in figures 3(*c,d*). As an example, $\Delta y \approx 0.1\delta - 0.15\delta = 0.5h - 0.75h$ enforces a logarithmic mean-velocity profile for case C144₅₅₀, but with a non-smooth-wall-like κ_c , as evidenced in figures 3(*a,e*). In addition, the mean-velocity profile above the logarithmic layer is different from a corresponding smooth-wall profile, suggesting a breakdown of outer-layer similarity, even though U^+ was made logarithmic. Alternatively, by imposing $\Delta y \approx 0.1\delta = 0.5h$, we may recover a smooth-wall-like logarithmic layer, as depicted in figure 3(*c*), where $\kappa_c \approx \kappa_s \approx 0.39$. Nevertheless, the outer-wake region is still not smooth-wall-like, which would still

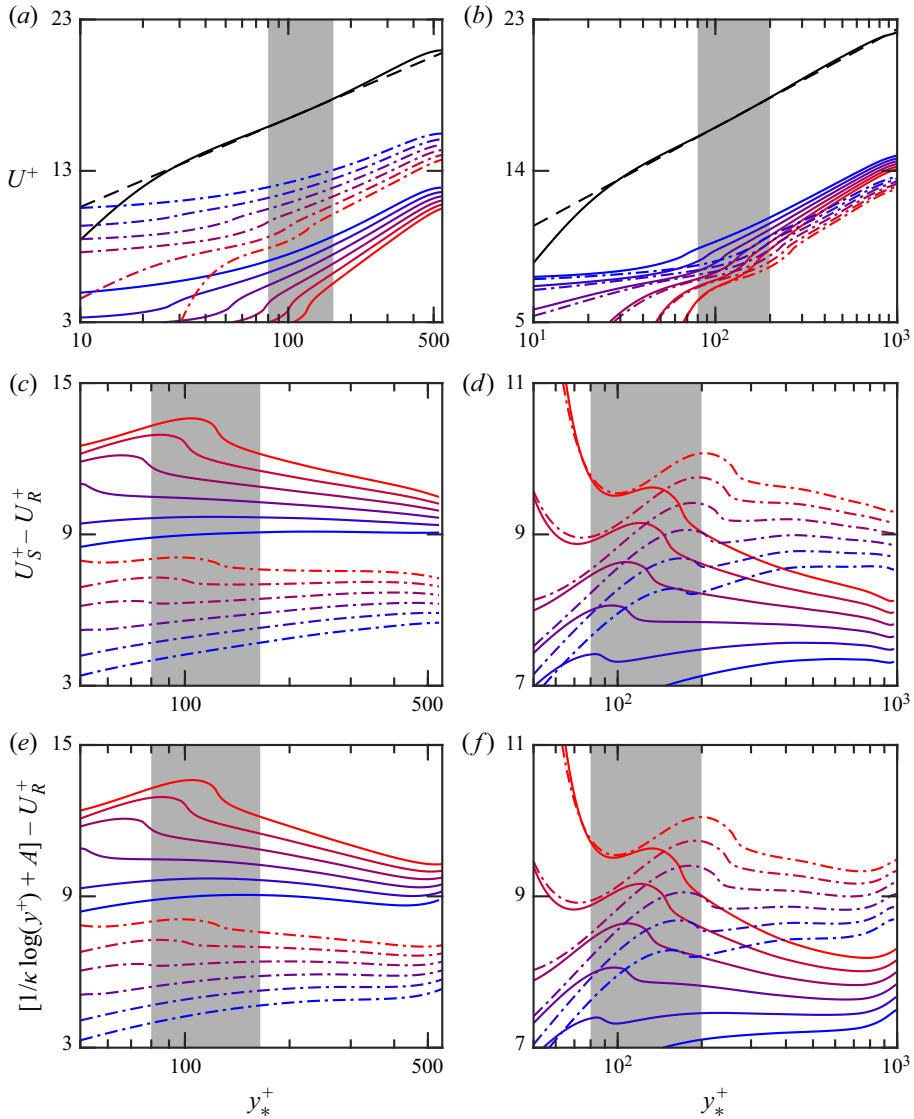


Figure 3. Mean-velocity and velocity-deficit profiles for (a,c,e) cases C144₅₅₀ (solid colour lines) and C432₅₅₀ (dashed colour lines), and (b,d,f) cases O400₁₀₀₀ (solid colour lines) and O800₁₀₀₀ (dashed colour lines). From blue to red, results are based on (a,c) $\Delta y = 0$ to 0.25δ and (b,d) $\Delta y = 0.05\delta$ to 0.15δ ; the black solid lines are reference smooth-wall profiles (a) C₅₅₀ and (b) O₁₀₀₀; the black dashed lines are the smooth-wall log-law profile $1/\kappa \log(y^+) + A$; and the shaded area marks the logarithmic region for smooth-wall flows, $y^+ = 80$ to $y = 0.3\delta$ for closed channels, and $y^+ = 80$ to $y = 0.2\delta$ for open channels. The upper bound of the log region in open channels is lower than that in a closed channel because the free-slip surface induces a ‘cutoff’ to the wake region, which limits the extent of the logarithmic layer.

break full outer-layer similarity. Moreover, for the intrusive cases C432₅₅₀ and O800₁₀₀₀, where the near-wall turbulence is disrupted completely by the element-induced flow, the mean-velocity profile could still be enforced to take a logarithmic or smooth-wall-like shape within the ‘logarithmic layer’, as shown in figures 3(c–f). Nevertheless, the flow above this ‘logarithmic layer’ is never smooth-wall-like. In contrast, outer-layer similarity

may still be achieved without recovering a complete smooth-wall-like logarithmic region, as illustrated for case O400₁₀₀₀ in figures 3(b,d,f), where the lower part of the logarithmic region is perturbed by the canopy, but the flow above $y_*^+ \approx 130$ is essentially smooth-wall-like when $\Delta y = 0.1\delta$. The above suggests that outer-layer similarity cannot be recovered simply by artificially matching U^+ to $\log(y_*^+)$, or a smooth-wall profile, exclusively in the logarithmic layer. The matching should be for any height above the roughness sublayer.

Within the logarithmic layer, enforcing U^+ to be logarithmic, or smooth-wall-like, is essentially equivalent to enforcing β to have a plateau, or a smooth-wall-like region. While the shapes of both $U^+(y_*^+)$ and $\beta(y_*^+)$ contain the same information, β is more sensitive to deviations from the smooth-wall reference profile, and it portrays directly the value of $1/\kappa$ if it exhibits a plateau in the logarithmic layer. For these reasons, some recent studies rely on β to predict Δy and u_τ^* (Mizuno & Jiménez 2011; Kuwata & Suga 2017; Okazaki *et al.* 2021, 2022). Breugem *et al.* (2006) and Suga *et al.* (2010) argued that the slope of U^+ versus $\log(y_*^+)$ must be constant within the logarithmic layer, and the profile of $(y + \Delta y) dU/dy$ should therefore exhibit a plateau with value u_τ^*/κ . It is worth mentioning that although the method and argument by Breugem *et al.* (2006) and Suga *et al.* (2010) have been adapted by some recent studies, these studies actually maximise the extent of the plateau in the entire flow, instead of just within the logarithmic layer (e.g. figure 5 in Breugem *et al.* 2006, figure 6 in Rosti & Brandt 2017, and figure 8 in Shen *et al.* 2020). However, let us illustrate using one of our present cases that there are instances when enforcing a plateau within the logarithmic layer or maximising the extent of the plateau may result in a breakdown of outer-layer similarity. Figure 4(a) shows the diagnostic function of case C36₅₅₀, which consists of closely packed elements. A plateau in β emerges within the logarithmic layer when picking $\Delta y = 0.05\delta = 0.25h$, and the extent of this plateau maximises when picking $\Delta y = 0.1\delta = 0.5h$. The resulting Kármán constant $\kappa_c \approx 0.32$ or 0.29 , respectively, is much smaller than the smooth-wall value $\kappa_s \approx 0.39$, implying a significant modification of the outer-layer mean-velocity profile by the substrate. For dense canopies like C36₅₅₀, however, we would expect the overlying turbulent flow to ‘skim’ over the canopy tips, as the turbulent eddies are precluded from penetrating within and interacting with the full height of the canopy, to the point that the flow above the tips resembles a smooth-wall flow (Brunet 2020; Sharma & García-Mayoral 2020b). Figure 4(b) illustrates that the scaling based on $\Delta y = 0$ produces a smooth-wall-like diagnostic function for case C36₅₅₀, suggesting that the overlying flow indeed perceives an origin in the vicinity of the canopy-tip plane. The underlying problem is that the emergence of a logarithmic layer relies on a large Reynolds number δ^+ such that the only available length scale in the overlap region, $v/u_\tau \ll y \ll \delta$, is the wall-normal distance y (Townsend 1976). Within this overlap region, only a dimensionless constant $\kappa = u_\tau/(y \partial U/\partial y)$, can be constructed (Luchini 2017). However, if δ^+ is not sufficiently large, then $u_\tau/(y \partial U/\partial y)$ need not exhibit a flat plateau, as shown in figure 5. For smooth-wall flows, even $Re_\tau \approx 5000$ is not yet sufficient for the diagnostic function to exhibit a completely flat plateau, according to numerical evidence (Lee & Moser 2015; Hoyas *et al.* 2022). The local value of $\beta \approx 1/\kappa$ in the logarithmic layer exhibits a dependence on y/δ , or y^+/Re_τ , caused by the contamination from the wake above (Jiménez & Moser 2007; Mizuno & Jiménez 2011; Luchini 2018). As shown in figure 5, even for smooth-wall flows, so long as $Re_\tau \lesssim 5000$, enforcing a plateau in β would overlook this dependence, and result in non-physical zero-plane displacements and values of κ down to 0.3, as those listed in the figure. The above results for smooth walls suggest that artificially prescribing a plateau in β , while not enforcing the similarity in the wake

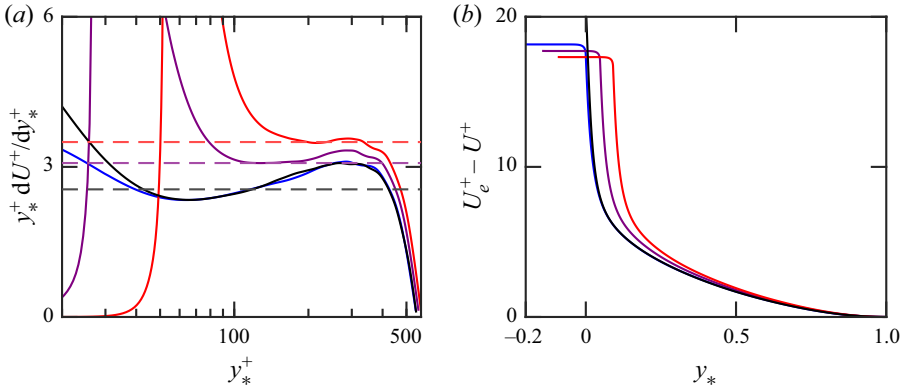


Figure 4. (a) Diagnostic function and (b) defect-law velocity profile, scaled with y_* and u_τ^* for case C36550. Black solid line, reference smooth-wall profile C550; blue, violet and red solid lines, canopy statistics based on $\Delta y = 0, 0.05\delta$ and 0.1δ , respectively; black, violet and red dashed lines, values of $1/\kappa$ for smooth-wall and canopy flow, where $\kappa_s \approx 0.39$ and $\kappa_c \approx 0.32$ and 0.28 , respectively.

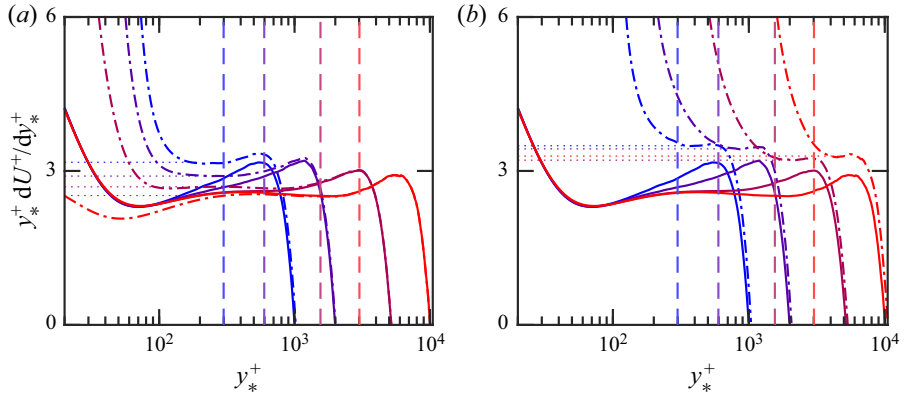


Figure 5. Diagnostic function for smooth-wall channel flows at Re_τ increasing from blue to red: $Re_\tau \approx 1000, 2000, 5000$ and 10000 . The solid lines represent $y^+ dU^+/dy^+$, with $\Delta y = 0$; the dash-dotted lines in (a) represent β with $\Delta y^+ \approx 40, 27, 13, 7$, so that a plateau is enforced within the logarithmic layer as in Manes *et al.* (2011) and Okazaki *et al.* (2021, 2022); the dash-dotted lines in (b) represent β with $\Delta y^+ \approx 80, 139, 311, 1004$, so that the extent of the plateau is maximised as in Breugem *et al.* (2006), Suga *et al.* (2010), Kuwata & Suga (2017), Rosti & Brandt (2017), Fang *et al.* (2018), Shen *et al.* (2020), Kazemifar *et al.* (2021), Okazaki *et al.* (2021, 2022) and Karra *et al.* (2022). Notice that Okazaki *et al.* (2021, 2022) use both methods (see figures 5c and 5(a,b,d) in Okazaki *et al.* 2021, and figures 12 and 21 in Okazaki *et al.* 2022). With Re_τ increasing, the horizontal dotted lines correspond to $\kappa_c \approx (0.32, 0.34, 0.37, 0.40)$ in (a) and $\kappa_c \approx (0.29, 0.29, 0.31, 0.30)$ in (b), and the vertical lines represent the upper bound of the logarithmic layer, $y/\delta \approx 0.3$. The $Re_\tau \approx 1000, 5000$ data are from Lee & Moser (2015), the $Re_\tau \approx 2000$ data are from Hoyas & Jiménez (2006), and the $Re_\tau \approx 10000$ data are from Hoyas *et al.* (2022).

region, could result in an apparent but false breakdown of outer-layer similarity and values for κ that are consistently lower than the true smooth-wall value, as those listed in table 1. It is worth mentioning that the logarithmic layer of a smooth-wall channel is generally understood to span from $y^+ \approx 80$ to $y/\delta \approx 0.3$. It is therefore not possible to define κ meaningfully for flows at Reynolds numbers $\delta^+ \lesssim 300$, for which there is no significant range of y in which a logarithmic layer can manifest. Note that some of the flows in table 1 fall in this low- Re range.

Examination of outer-layer similarity over obstructing surfaces

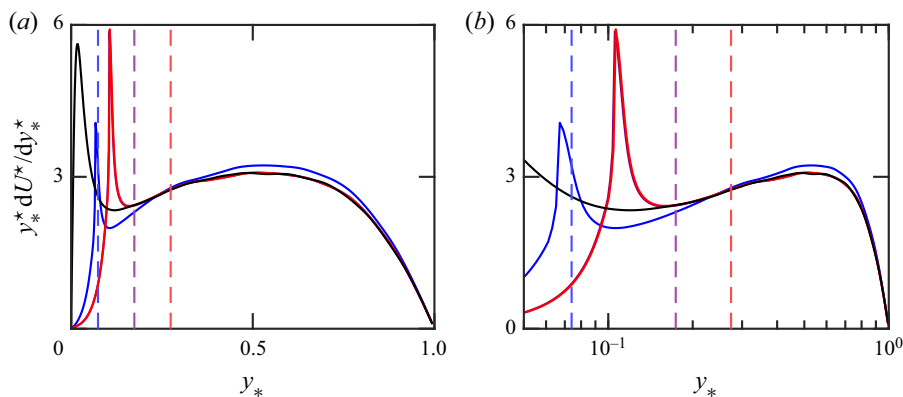


Figure 6. Diagnostic function of case C144₅₅₀ scaled with Δy and u_τ^* , the friction velocity decoupled from $y_* = 0$, that minimise the r.m.s. deviation from the smooth-wall profile above y_r . Black solid line, reference smooth-wall profile at $Re_\tau \approx 550$; blue, violet and red solid lines, canopy statistics based on blue dashed line $y_r = 0.074\delta$, violet dashed line $y_r = 0.174\delta$, and red dashed line $y_r = 0.274\delta$, respectively.

To address the above issues, we propose to obtain u_τ^* and Δy by minimising the deviation between the smooth-wall and canopy diagnostic functions everywhere above the roughness sublayer, not just in the logarithmic layer. It will be demonstrated in §§ 3.3 and 3.4 that this method consistently recovers outer-layer similarity.

3.3. Sensitivity of canopy diagnostic function

Outer-layer similarity can be expected to appear only above the roughness sublayer, of height y_r , above which the canopy diagnostic function β_c should be smooth-wall-like. Because the extent of roughness effects can vary depending on the canopy density, as shown in figure 2, y_r needs to be determined separately for each canopy (Jiménez 2004; Brunet 2020). Care must be taken, because if part of the roughness sublayer is included in the region where outer-layer similarity is sought, then the values of Δy and u_τ may be distorted. Therefore, the latter region needs to be sufficiently far away from the wall, $y > y_r$, such that all surface effects have vanished. We determine the values of Δy and u_τ that recover a smooth-wall-like diagnostic function, or mean-velocity profile, as those that minimise the deviation between β_s and β_c , the smooth-wall and canopy diagnostic functions, above y_r . By this method, we recover a smooth-wall-like β_c in the outer layer, including both the logarithmic layer and the ‘wake’ region.

As an example, for case C144₅₅₀, figure 6 portrays β_c scaled with y_* and u_τ^* , the friction velocity decoupled from $y_* = 0$, based on three tentative values of y_r . For $y_r = 0.074\delta = 0.37h = 0.28s$, β_c is not smooth-wall-like, even if the deviation between β_c and β_s above y_r is minimised. This is because the flow at this y_r is still perturbed directly by the canopy elements, as y_r is too small compared to s , which provides an estimate of the roughness sublayer thickness, as evidenced in figure 2. In turn, adopting $y_r = 0.274\delta = 1.37h = 1.04s$ overestimates the roughness sublayer thickness, as β_c is already smooth-wall-like based on $y_r \gtrsim 0.174\delta = 0.87h = 0.66s$, implying that the height affected by the canopy in this case is lower than $y_r/s \approx 2$ –3 reported in Abderrahaman-Elena *et al.* (2019) and Sharma & García-Mayoral (2020b). For this canopy, we can conclude that outer-layer similarity is recovered when $y_r \approx 0.66s$, and beyond this limit, β_c and Δy are insensitive to the lower bound from which outer-layer similarity is enforced, as illustrated in figures 6

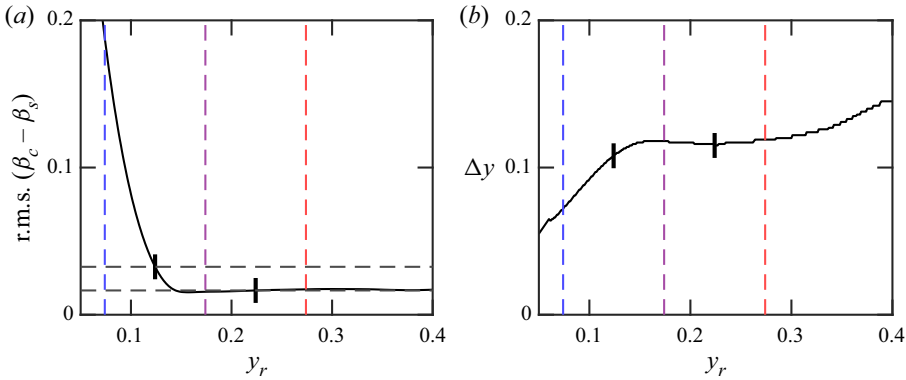


Figure 7. (a) The r.m.s. deviation between β_s and β_c above y_r and (b) zero-plane displacement Δy , versus y_r for case C144₅₅₀. The horizontal dashed lines mark once and twice the baseline error; and the thick black vertical markers denote the lower and upper bounds for y_r above which outer-layer similarity recovers. The vertical dashed lines are as in figure 6.

and 7(b). The r.m.s. deviation between β_c and β_s above y_r is minimised if y_r is sufficiently far away from the canopy, as shown in figure 7(a).

In the above, we have let $\kappa_c = \kappa_s$ and u_τ^* be independent of Δy , and we obtain the values of Δy and u_τ^* for each y_r by minimising the difference between β_c and β_s for any y above y_r . However, if y_r is not chosen carefully, then the corresponding Δy and u_τ^* may not result in a smooth-wall-like β_c above y_r , as illustrated in figure 6. Therefore, we need to identify an appropriate lower bound for y_r to correctly assess outer-layer similarity, sufficiently far away from the wall for all surface effects to vanish. Starting at too low values, as y_r increases, the r.m.s. deviation of β in figure 7(a) decreases and eventually stabilises at a baseline-error level, which may be used to guide the selection of the lower bound of y_r . Here, we propose a lower bound of y_r such that the r.m.s. error is twice the baseline error. Above this lower bound, the deviation between β_c and β_s is small, suggesting that β_c scaled with y_* and u_τ^* is essentially smooth-wall-like. On the other hand, y_r should not be adopted excessively far above the surface, because outer-layer similarity cannot be examined properly on too small a portion of the flow. We propose an upper bound for y_r that is 0.1δ above the lower bound, as the r.m.s. of $\beta_c - \beta_s$ varies little beyond this.

Using the method that we propose, y_r results in Δy and u_τ^* that consistently recover outer-layer similarity, with the resulting Δy being insensitive to the particular choice of y_r within the range proposed above, as evidenced by the flat region in figure 7(b). As shown in figure 7(a), the height above which outer-layer similarity recovers for case C144₅₅₀ is $y_r = (0.174 \pm 0.05)\delta = (0.87 \pm 0.25)h = (0.66 \pm 0.19)s$. This is smaller than the typical roughness sublayer thickness, which extends up to $2h-3h$ above the tips (Jiménez 2004; Brunet 2020). Nevertheless, figure 2 illustrates that the dominant length scale for the intensity of the texture-coherent flow is the element spacing, and essentially, these texture-coherent flows vanish at one spacing above the tips. For intermediate to dense cases with $\lambda \gtrsim 0.1$, where $s/h \lesssim 1$, we observe the recovery of outer-layer similarity for $y_r \approx s \lesssim h$. Additionally, because y_r/δ is smaller than the typical upper bound of a logarithmic layer, $y \approx 0.3\delta$, we expect the recovery of a smooth-wall-like logarithmic layer. Based on the confidence interval for y_r , we obtain the zero-plane displacement $\Delta y = (0.113 \pm 0.005)\delta = (0.57 \pm 0.03)h$, as shown in figure 7(b), indicating that the outer-layer flow perceives an origin $y_* = 0$ at a depth roughly halfway between the floor and the canopy tips. However, the height of u_τ^* , corresponding to a smooth-wall-like κ , is

Examination of outer-layer similarity over obstructing surfaces

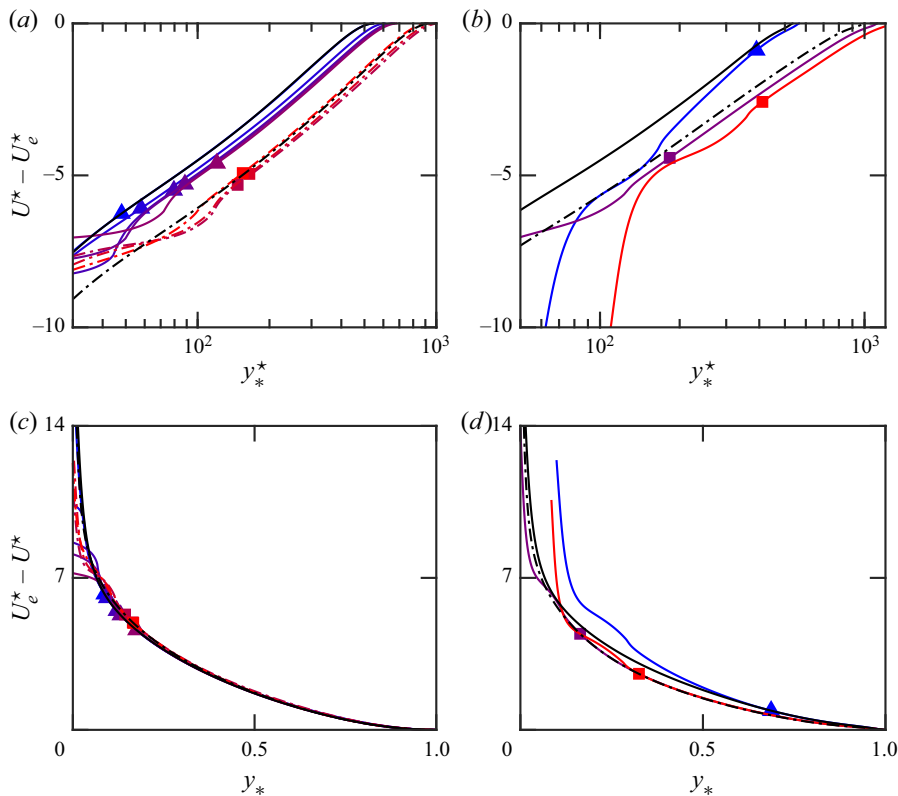


Figure 8. Mean-velocity profiles of the canopy and smooth-wall flows: (a,c) full-channel cases with less intrusive canopies, C36₅₅₀ to C144₅₅₀, and C216₉₀₀ to C432₉₀₀; (b,d) open-channel cases. The coloured solid and dash-dotted lines represent cases as in figure 2. The black solid lines represent smooth-wall reference profiles at $Re_\tau \approx 900-1000$, and the black dashed lines represent smooth profiles at $Re_\tau \approx 550$. The square markers represent the lower bound of y_r for cases at $Re_\tau \approx 550$, and the triangle markers represent that for cases at $Re_\tau \approx 900-1000$.

$y_{u_\tau^*} = (0.553 \pm 0.036)\delta = (2.77 \pm 0.18)h$, which is below the canopy floor (note that $y_{u_\tau^*}$ is decoupled from $y_* = 0$).

The fact that outer-layer similarity can be assessed only above a minimum height y_r implies that such similarity cannot be assessed for certain flows/substrates. In figures 8(c,d) and 9(c), we observe a breakdown of outer-layer similarity for the open-channel cases O400₅₅₀ ($y_r \geq 0.636\delta$) and O800₁₀₀₀ ($y_r \geq 0.274\delta$). This is because these intrusive canopies perturb the overlying flow extensively, well into the region where a logarithmic layer would have been found otherwise. In contrast, for intermediate to dense cases, C36₅₅₀ to C144₅₅₀, C216₉₀₀ to C432₉₀₀, and O400₁₀₀₀, which have less intrusive canopies, the canopy flow becomes smooth-wall-like no higher than $y_r = 0.224\delta$, allowing for the recovery of a smooth-wall-like outer layer. The canopy diagnostic functions in figures 9(a,b) also show that whether outer-layer similarity recovers depends on the extent of the roughness layer, which is associated with y_r . In contrast, prescribing a constant slope for U^+ versus $\log(y_*)$, or enforcing a plateau in β_c , can result consistently in a breakdown of outer-layer similarity and a Kármán constant different from the smooth-wall one, as illustrated in figures 9(c,d).

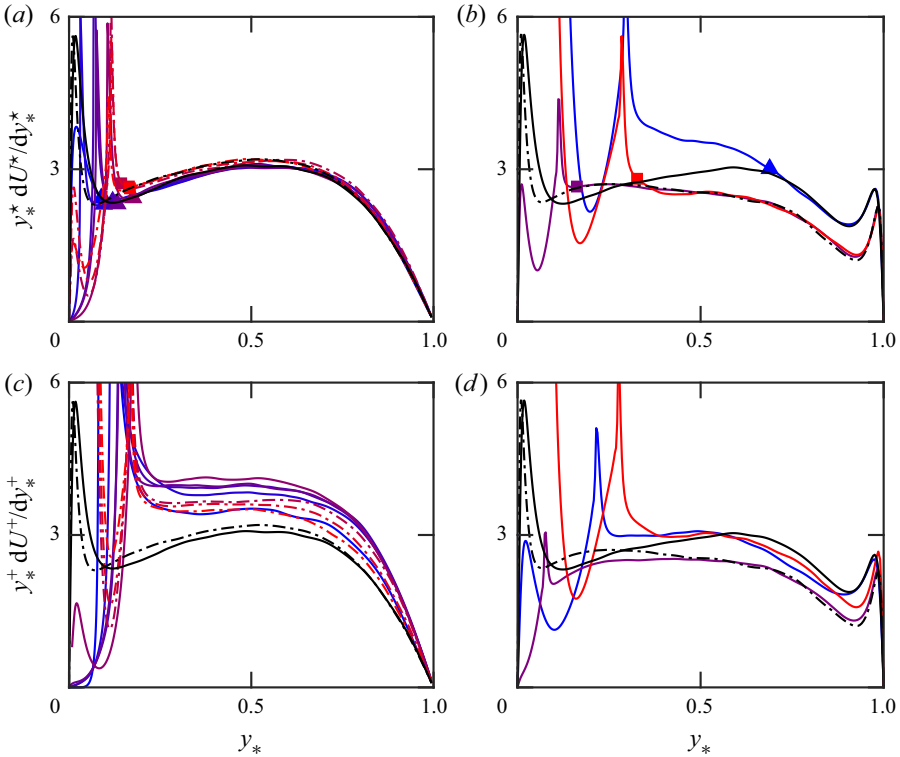


Figure 9. Diagnostic functions of the canopy and smooth-wall flows: (a,c) full-channel cases; (b,d) open-channel cases. Plots (a,b) enforce smooth-wall-like β_c above y_r ; (b,d) enforce plateaus in β_c . The lines and markers are as in figure 8.

3.4. Universality or non-universality of the Kármán constant

In the above, the friction velocity u_τ^* was not computed from the stress at the zero-plane displacement height $y_* = 0$, and was instead set as an independent variable, such that β_c was smooth-wall-like and κ was universal, $\kappa_c = \kappa_s$. Alternatively, the friction velocity u_τ^* could be computed from the stress at $y_* = 0$, and κ_c found by enforcing a match of the diagnostic function to that of a smooth-wall profile. In the logarithmic layer, (1.2) can be expressed as

$$y_* \frac{dU}{dy_*} \frac{\kappa_s}{u_\tau^*} = \kappa_s \beta(y_*, u_\tau^*) \approx 1, \tag{3.3}$$

$$y_* \frac{dU}{dy_*} \frac{\kappa_c}{u_\tau^*} = \kappa_c \beta(y_*, u_\tau^*) \approx 1, \tag{3.4}$$

from which we can observe that the group κ/u_τ needs to have a certain value, but the mean-velocity profile does not provide information on whether this should be achieved by fixing κ and finding u_τ , or vice versa, or otherwise. As long as $\kappa_c/u_\tau^* = \kappa_s/u_\tau^*$, the modified logarithmic profile in (3.4) is recovered. Figure 10(a) shows that whether u_τ^* or $\kappa_c \neq \kappa_s \approx 0.4$ is set as an independent parameter, the resulting mean-velocity profile or diagnostic function is still smooth-wall-like. In this subsection, we discuss the implications of fixing either u_τ or κ . While it is not possible to identify which option provides a complete outer-layer similarity by inspecting just the mean-velocity profile, other turbulent

Examination of outer-layer similarity over obstructing surfaces

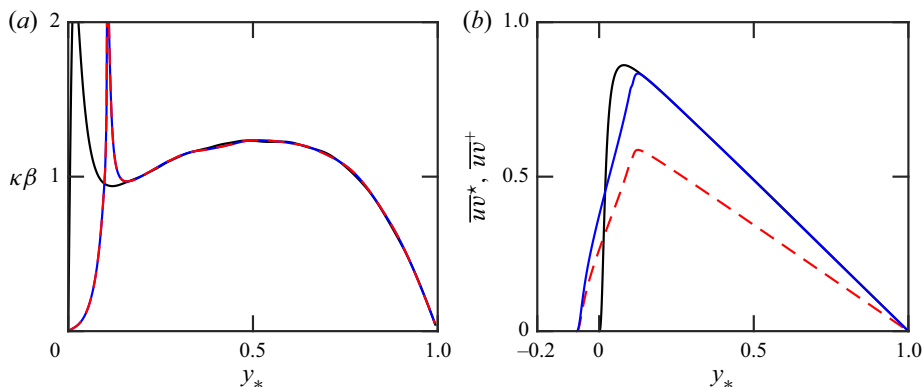


Figure 10. (a) Modified diagnostic function $\kappa\beta$, and (b) Reynolds shear stress, of case C144₅₅₀. Black solid line, reference smooth-wall profiles at $Re_\tau \approx 550$; red dashed line, canopy profile scaled with u_τ^* and y_* ; blue solid line, canopy profile scaled with u_τ^* and y_* .

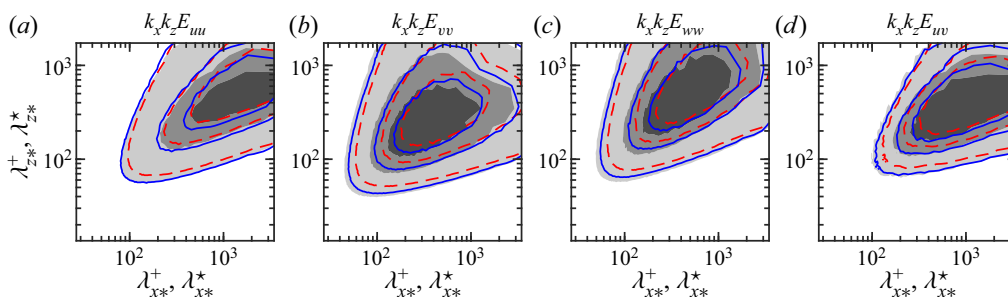


Figure 11. Pre-multiplied spectral energy densities for case C144₅₅₀ (line contours) and reference smooth-wall case C550 (filled contour) normalised by their respectively r.m.s. level at $y_* = 0.3\delta$. Red dashed line, canopy statistics scaled with u_τ^* and v ; blue solid line, canopy statistics scaled with u_τ^* and v . The contours are at 0.01, 0.05 and 0.1 times the r.m.s. level.

statistics collapse with the smooth-wall data when the friction velocity is evaluated at the zero-plane displacement height. As an example, the Reynolds shear stress profile in figure 10(b) collapses to smooth-wall data when scaled with u_τ^* , compared to u_τ^* . If, alternatively, a universal κ_c is enforced, the Reynolds shear stress would differ from smooth-wall values by a factor $(u_\tau^*/u_\tau^*)^2$. The spectral density maps in figure 11 also show that outer-layer similarity is achieved with u_τ^* obtained from the shear at the zero-plane displacement height $y_* = 0$, and κ_c having a non-smooth-wall value.

For the cases with less intrusive canopies, C36₅₅₀ to C144₅₅₀, C216₉₀₀ to C432₉₀₀, and O400₁₀₀₀, the r.m.s. velocity fluctuations, Reynolds shear stress and pre-multiplied spectral energy densities scaled with u_τ^* essentially collapse with their respective smooth-wall values above a height $y_* \approx 0.3\delta$, as shown in figures 12–14. This suggests that u_τ^* , and not u_τ^* , is the velocity scale for the outer-layer turbulence. However, for the more intrusive cases, for example O800₁₀₀₀, the roughness sublayer extends well into the overlying flow, which no longer exhibits a smooth-wall-like logarithmic layer, as evidenced by the footprint of the element-induced flow in figures 14(i–l). These intrusive textures cause a more in-depth modification of the outer-layer flow, and can lead to the breakdown of outer-layer similarity. Similar observations have been reported on large riblets and porous

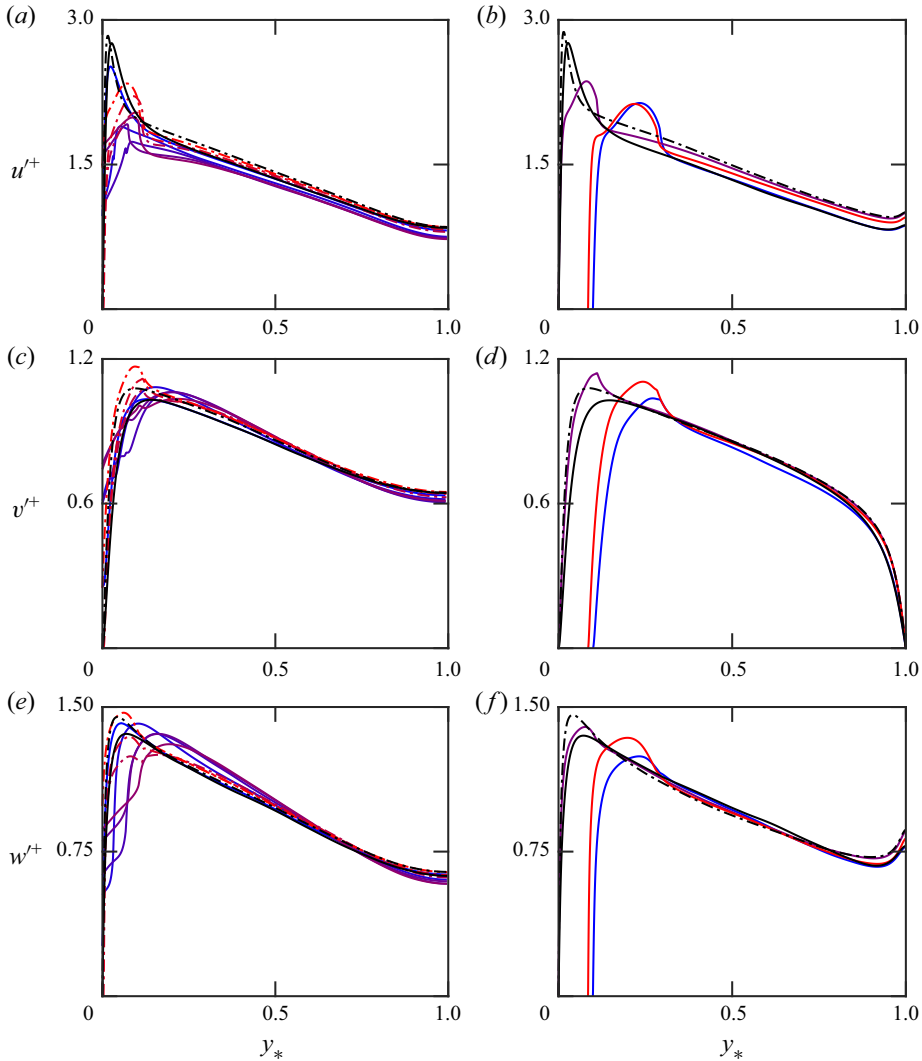


Figure 12. The r.m.s. velocity fluctuations scaled with y_* and u_τ^* : (a,c,e) full-channel cases; (b,d,f) open-channel cases. Lines are as in figure 8.

walls, where outer-layer similarity is limited if surface effects penetrate into a significant portion of δ (Breugem *et al.* 2006; Manes *et al.* 2011; Endrikat *et al.* 2022).

By minimising the r.m.s. deviation of β_c from β_s , as discussed in §§ 3.3 and 3.4, we obtain the values of Δy and u_τ^* that provide the scales for the outer-layer turbulent flow. The trend of the zero-plane displacement in figure 15(a) suggests that the flows over dense canopies perceive an origin close to the tips, and that this origin becomes deeper as the canopy density decreases. In figure 15(b), the densest case has a smooth-wall-like Kármán constant, $\kappa_c \approx 0.4$, and the value of κ_c decreases as the canopy density decreases. However, for the sparsest cases, κ_c appears to tend back to its smooth-wall value. We note that the decreases in κ_c for all canopies in this study never exceed 15% of its smooth-wall value, which is significantly smaller than obtained by fitting U^+ to a $\log(y_*^+)$ profile as in Breugem *et al.* (2006), Suga *et al.* (2010), Rosti & Brandt (2017), Kuwata & Suga (2017),

Examination of outer-layer similarity over obstructing surfaces

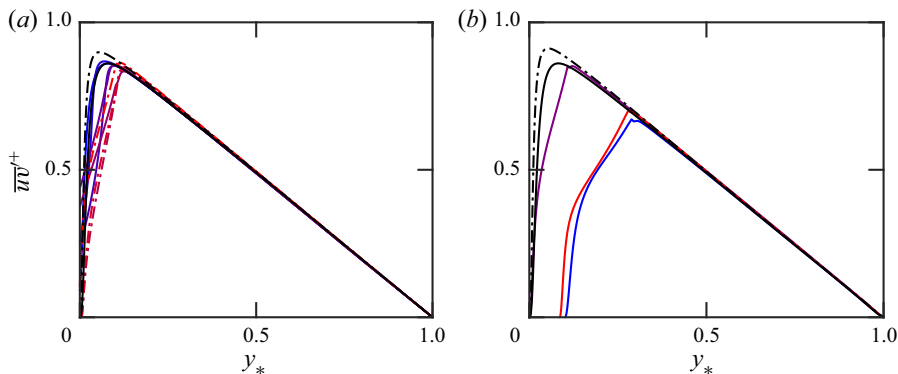


Figure 13. Reynolds shear stress scaled with y_* and u_*^+ : (a) full-channel cases; (b) open-channel cases. The lines are as in figure 8.

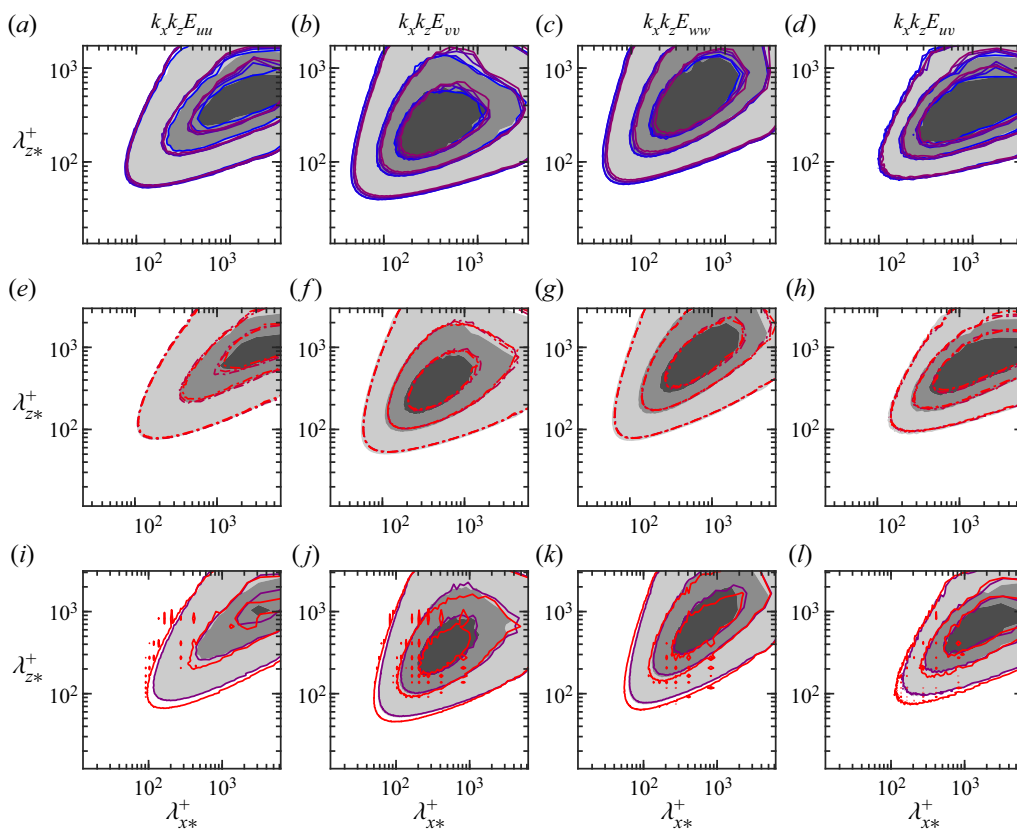


Figure 14. Pre-multiplied spectral energy densities for canopy flow (line contours) and reference smooth-wall cases (filled contours) normalised by their respective r.m.s. level at $y_* = 0.3\delta$: (a–d) full-channel cases; (e–h) and (i–l) open-channel cases. The line colour scheme is as in figure 8. The contours are at 0.01, 0.05 and 0.1 times the mean-square fluctuation level.

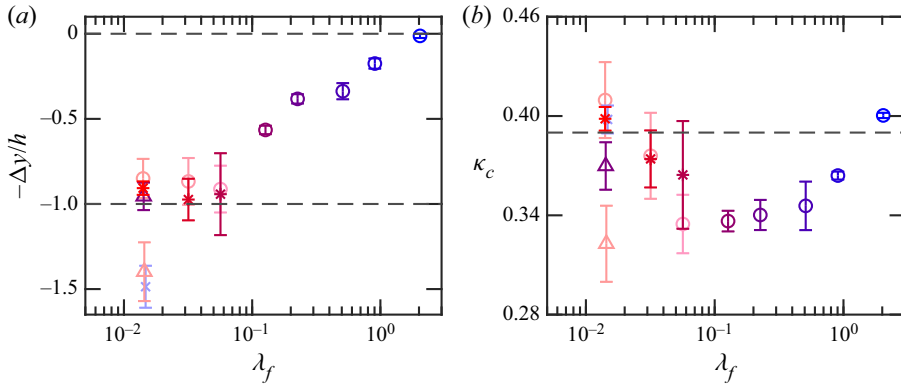


Figure 15. (a) Ratio of zero-plane displacement depth to canopy height, $-\Delta y/h$, and (b) Kármán constant, κ_c , versus canopy density λ_f , for all cases considered. Markers \circ , $*$, \times and \triangle represent full-channel cases at $Re_\tau \approx 550$ and $Re_\tau \approx 900$, and open-channel cases at $Re_\tau \approx 550$ and $Re_\tau \approx 1000$, respectively. The colour scheme is as in figure 2. Transparent markers represent cases with substantial texture-induced coherent flows in the outer layer, and coloured markers represent cases with a smooth-wall-like outer layer. In (a), the black dashed line represents Δy corresponding to zero-plane displacement height at the canopy tip ($-\Delta y/h = 0$) and at the floor ($-\Delta y/h = -1$). In (b), the black dashed line represents $\kappa_s \approx 0.39$.

Kazemifar *et al.* (2021) and Okazaki *et al.* (2021, 2022), where the values of κ_c reported were as low as $\kappa_c \approx 0.2$.

The present results for dense and sparse canopies are consistent with the results in Nepf (2012a), Brunet (2020) and Chung *et al.* (2021), who summarised that for roughness in the dense or sparse regime, the zero-plane displacement height approaches the roughness crest or trough, respectively. For instance, for the dense canopy C36₅₅₀, $\lambda_f \approx 2.04$, the smooth-wall-like overlying flow perceives an origin at the tips, and the Kármán constant has a smooth-wall value $\kappa_c \approx \kappa_s \approx 0.39$, as illustrated in figure 15. MacDonald *et al.* (2016) and Sharma & García-Mayoral (2020b) have also observed such skimming flow for closely-packed sinusoidal roughness and filament canopies, where $s^+ \lesssim 3$. In particular, in the dense regime, where the spacing between elements is comparable to the viscous length scale ν/u_τ , essentially the overlying turbulence is precluded from penetrating the roughness, and the unmodified overlying flow is smooth-wall-like with a zero-plane displacement height at the tips.

Sparse canopies, where the ratio between element spacing and height is large, are generally more intrusive than the intermediate to dense canopies because the roughness sublayer can extend to $y/s \approx 1$ into the channel, as discussed in § 3.1. For the sparse and tall canopies, C216₅₅₀, C288₅₅₀, C432₅₅₀, O400₅₅₀ and O800₁₀₀₀, the surface effects penetrate deep into the overlying flow and can reach the channel centre, impeding the assessment of outer-layer similarity. For these substrates, outer-layer similarity could be assessed only at higher Re_τ . This motivated us to conduct simulations C216₉₀₀, C288₉₀₀, C432₉₀₀, O400₁₀₀₀, for which the canopies have similar dimensions to C216₅₅₀, C288₅₅₀, C432₅₅₀, O400₅₅₀, in inner units, but such that the unperturbed core flow is a larger portion of the channel. As illustrated in figure 15, the larger- Re_τ flows allow for a clearer assessment of outer-layer similarity, with zero-plane displacement height at the floor, and $\kappa_c \approx \kappa_s \approx 0.39$. Our observations are consistent with those in Poggi *et al.* (2004), Nepf *et al.* (2007) and Sharma & García-Mayoral (2020a), where the flows over sparse canopies exhibit characteristics of smooth-wall flows, with reference wall at the canopy floor.

Flows over canopies with an intermediate density ($\lambda_f \gtrsim 0.1$) perceive an origin between the tips and floor, as shown in figure 15(a). For these intermediate canopies, with $s/h \lesssim 1$, the overlying flow interacts mainly with the upper part of the obstacles, and turbulence does not penetrate all the way to the floor (Grimmond & Oke 1999; Luhar, Rominger & Nepf 2008; MacDonald *et al.* 2018; Sharma & García-Mayoral 2020b). These intermediate-canopy flows exhibit values of the Kármán constant $\kappa_c \approx 0.34\text{--}0.36$, different from the smooth-wall value $\kappa_s \approx 0.39$, implying that the intermediate canopies disrupt the overlying flow more profoundly than both dense and sparse substrates. Nevertheless, other than for the change in κ , the turbulent statistics remain essentially smooth-wall-like in the logarithmic layer and above, as depicted in figures 8, 9 and 12–14. This suggests a modified outer-layer similarity, where $\kappa_c \neq 0.39$, but where otherwise the turbulence is outer-layer-similar to a smooth-wall flow. For $h \ll \delta$, we could expect that the flow far from the wall is not influenced by the details of the surface topology, as is the classical view of wall turbulence (Clauser 1956). Further work is required to study if the same canopies would also exhibit $\kappa_c \neq 0.39$ at larger δ/h ratios, say $\delta/h \approx 40$ as proposed by Jiménez (2004).

4. Conclusions

In the present work, we have assessed outer-layer similarity in flows over canopies ranging from sparse to dense ($\lambda_f \approx 0.01\text{--}2.03$) at $Re_\tau \approx 550\text{--}1000$. We have discussed and appraised the conventional methods for the assessment of outer-layer similarity, showing that these methods could be inaccurate for flows over dense roughness and for flows at moderate Re_τ .

To investigate outer-layer turbulence, we first determined the depth of the roughness sublayer, within which the turbulence is disrupted significantly by the element-induced flow. It was shown that the roughness sublayer for the present flows extends to a height equal to the element spacing. For the cases with tall ($h \approx 0.2\delta$) and sparse ($\lambda_f \ll 0.1$) elements, C216₅₅₀, C288₅₅₀, C432₅₅₀, O400₅₅₀ and O800₁₀₀₀, the element-induced flows penetrate effectively into the channel as far as $y \approx 0.5\delta$, or even above. As a result, these intrusive canopies leave only a small portion of core flow unperturbed, making the assessment of outer-layer similarity difficult. To verify whether outer-layer similarity can recover for these intrusive cases, simulations at higher Re_τ , producing a larger unperturbed region, were required.

Conventionally, outer-layer similarity for a flow over roughness is recovered by imposing a zero-plane displacement and the corresponding friction velocity on the mean-velocity profile, such that the logarithmic layer is smooth-wall-like. We have discussed some caveats of conventional drag-based and mean-velocity-based methods used to determine these constants. For drag-based methods, and for densely packed roughness elements, the point of action of the total drag is located within the elements, while the overlying flow actually perceives an origin in the vicinity of the tips. For mean-velocity-based methods, we have shown that at moderate Re_τ , even smooth-wall flows do not exhibit a constant slope for U^+ versus $\log(y_*^+)$, or a plateau in β . Therefore, matching the shape of U^+ to $\log(y_*^+)$, or equivalently, enforcing a plateau in the diagnostic function β , may result in an artificial breakdown of outer-layer similarity and spurious predictions for the zero-plane displacement and the friction velocity at any but the highest Re_τ available in DNS literature.

To obtain the zero-plane displacement and friction velocity scale that recovers a smooth-wall-like diagnostic function, we minimise the deviation between the canopy and smooth-wall diagnostic function everywhere above the roughness sublayer, instead of in

the logarithmic layer alone. By this method, we obtain a smooth-wall-like β not only in the logarithmic layer, but also in the wake region, enforcing outer-layer similarity in its full sense. We also explore the possibility of the zero-plane displacement and the friction velocity being set independently, but find that outer-layer similarity is recovered more consistently when they are coupled. For the dense canopies like C36₅₅₀, the unmodified overlying flow is smooth-wall-like with a zero-plane displacement height at the tips, and the Kármán constant has a smooth-wall value $\kappa_c \approx \kappa_s \approx 0.39$. This is the case because the skimming turbulence is precluded from penetrating into the obstacles, and perceives an origin at the tips. For sparse canopies ($\lambda_f \ll 0.1$), the higher- Re_τ cases, C216₉₀₀, C288₉₀₀, C432₉₀₀ and O400₁₀₀₀, allow for the assessment of outer-layer similarity, with zero-plane displacement height at the floor, and $\kappa_c \approx \kappa_s \approx 0.39$. For intermediate canopies ($\lambda_f \gtrsim 0.1$), with $s/h \lesssim 1$, the overlying flow interacts mainly with the upper part of the obstacles, and turbulence does not penetrate all the way to the floor. These intermediate-canopy flows perceive a zero-plane displacement height between the tips and floor, and exhibit values of the Kármán constant $\kappa_c \approx 0.34\text{--}0.36$, different from the smooth-wall value $\kappa_s \approx 0.39$, implying that the intermediate canopies disrupt the overlying flow more profoundly than both dense and sparse substrates. Nevertheless, other than for the change in κ , the turbulent statistics remain essentially smooth-wall like in the logarithmic layer and above.

Acknowledgements. This work was partially supported by EPSRC grant EP/S013083/1. For the purpose of open access, the authors have applied a Creative Commons Attribution (CC BY) licence to any Author Accepted Manuscript version arising from this submission. Computational resources were provided by the ‘Cambridge Service for Data Driven Discovery’ operated by the University of Cambridge Research Computing Service and funded by EPSRC Tier-2 grant EP/P020259/1 (projects cs066 and cs155), and by the ‘ARCHER2’ system in the UK, funded by PRACE (project pr1u1702) and EPSRC (project e776). All research data supporting this publication are available directly within this publication.

Declaration of interests. The authors report no conflict of interest.

Author ORCIDs.

 Zishen Chen <https://orcid.org/0000-0002-4248-4301>;

 Ricardo García-Mayoral <https://orcid.org/0000-0001-5572-2607>.

Appendix. Grid independence and validation

In this study, the no-slip condition within the canopy elements is enforced using the direct-forcing, immersed-boundary method (Iaccarino & Verzicco 2003) as implemented in García-Mayoral & Jiménez (2011) and modified by Sharma & García-Mayoral (2020*a,b*). This method applies a body force term to the right-hand side of (2.4) and drives the velocity at the immersed-boundary points to zero. The reader is referred to the works of Sharma & García-Mayoral (2020*b*) and Sharma (2020) for a detailed discussion on the accuracy of the immersed-boundary method implemented and wall-parallel resolution used. In the present study, the velocity within the rigid canopy elements is observed to be less than $0.1u_\tau$, with u_τ evaluated at the canopy tips, for all the DNS conducted. As portrayed in figure 16, the velocity at the ‘solid’ points within the obstacles is significantly smaller than that at the surrounding ‘fluid’ points, illustrating that the immersed-boundary method resolves the canopy topology.

To analyse grid convergence, we have carried out three DNS for case C108₅₅₀ with different wall-normal resolutions, as portrayed in figure 17. Compared to smooth-wall flows, where the maximum mean shear occurs at the wall, $dU^+/dy^+ = 1$, in our flows it occurs at the canopy-tip plane and is not as high, in the present case $dU^+/dy^+ \approx 0.16$, peaking again at the floor at $dU^+/dy^+ = 0.1$. Since the local shear is the driver of

Examination of outer-layer similarity over obstructing surfaces

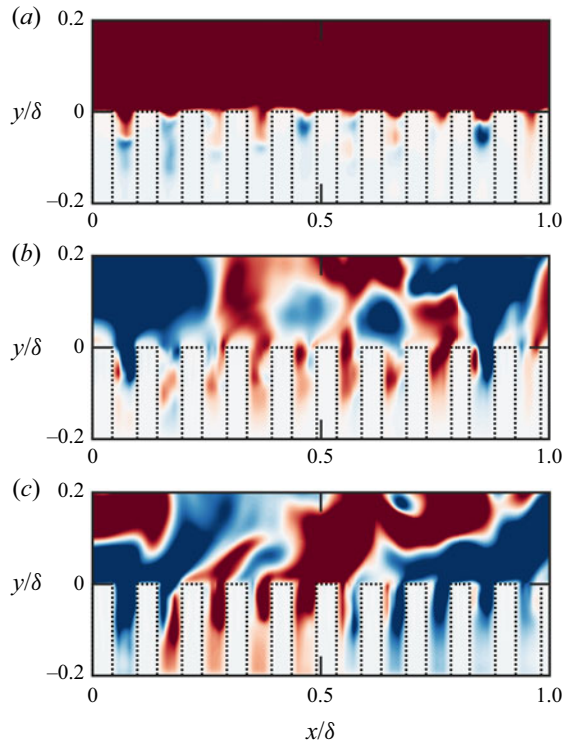


Figure 16. Instantaneous realisations of the (a) streamwise, (b) wall-normal and (c) spanwise velocities in a plane intersecting the canopy elements for case C54₅₅₀, scaled with u_τ evaluated at the canopy tips. The darkest red and blue contours represent intensities of ± 1.0 , respectively.

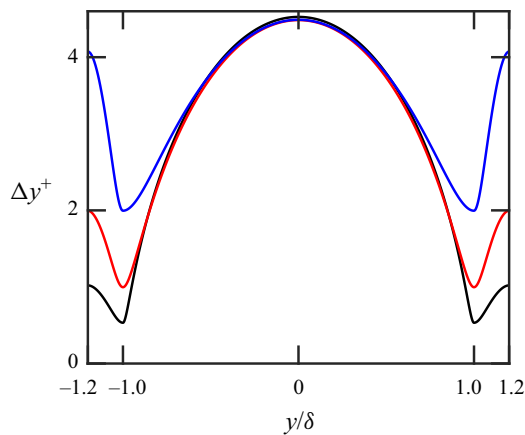


Figure 17. Wall-normal resolution, scaled with v and u_τ evaluated at the canopy tips, for case C108₅₅₀ for a fine resolution (black solid line), a standard resolution (red solid line) and a coarse resolution (blue solid line).

turbulence, the wall-normal resolution required for the direct simulation of these flows is thus lower than for smooth-wall flows in terms of Δy^+ , and can be adjusted following the local shear, as shown in figures 17 and 18(b). Consistent with this discussion, let us also note that the resolution at the floor in all of our simulations, for the case portrayed

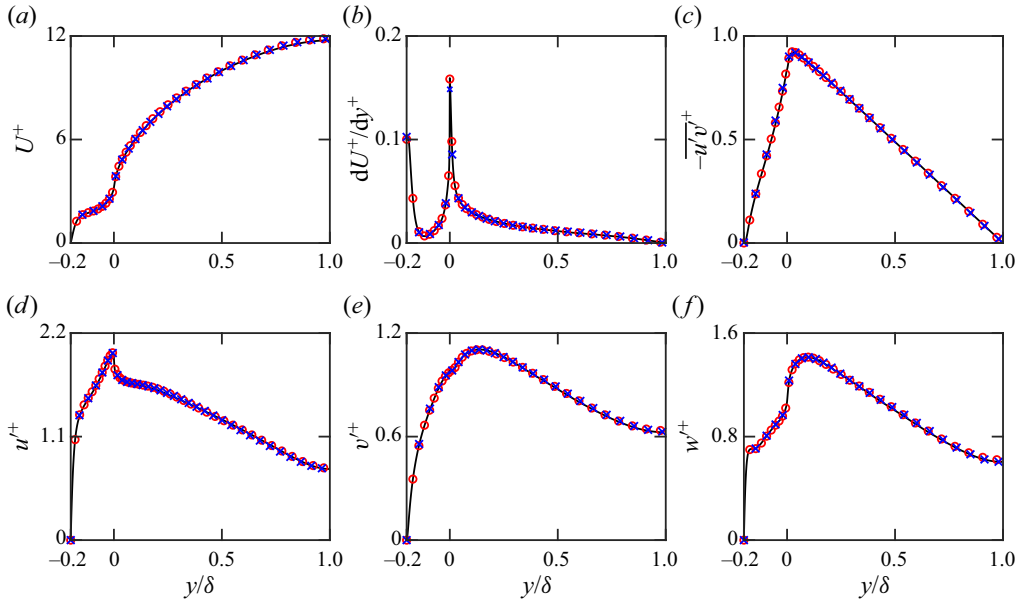


Figure 18. Turbulent statistics based on v and u_τ evaluated at the canopy tips for case C108₅₅₀. The colour scheme is as in figure 17.

(C108₅₅₀), $\Delta y^+ \approx 2$, is actually $\Delta y^+ \approx 0.3$ when scaled with the local, dynamically relevant friction velocity proposed in Sharma & García-Mayoral (2018, 2020b). Figure 18 portrays the results obtained for the resolution used in this paper, plus one finer and one coarser. All results collapse, evidencing grid convergence.

REFERENCES

- ABDERRAHAMAN-ELENA, N., FAIRHALL, C.T. & GARCÍA-MAYORAL, R. 2019 Modulation of near-wall turbulence in the transitionally rough regime. *J. Fluid Mech.* **865**, 1042–1071.
- ALLEN, J.J., SHOCKLING, M.A., KUNKEL, G.J. & SMITS, A.J. 2007 Turbulent flow in smooth and rough pipes. *Phil. Trans. R. Soc. A* **365** (1852), 699–714.
- AMIR, M. & CASTRO, I.P. 2011 Turbulence in rough-wall boundary layers: universality issues. *Exp. Fluids* **51** (2), 313–326.
- ANDREOPOULOS, J. & BRADSHAW, P. 1981 Measurements of turbulence structure in the boundary layer on a rough surface. *Boundary-Layer Meteorol.* **20** (2), 201–213.
- BELCHER, S.E., HARMAN, I.N. & FINNIGAN, J.J. 2012 The wind in the willows: flows in forest canopies in complex terrain. *Annu. Rev. Fluid Mech.* **44** (1), 479–504.
- BHAGANAGAR, K., KIM, J. & COLEMAN, G. 2004 Effect of roughness on wall-bounded turbulence. *Flow Turbul. Combust.* **72** (2), 463–492.
- BREUGEM, W.P., BOERSMA, B.J. & UITTENBOGAARD, R.E. 2006 The influence of wall permeability on turbulent channel flow. *J. Fluid Mech.* **562**, 35–72.
- BRUNET, Y. 2020 Turbulent flow in plant canopies: historical perspective and overview. *Boundary-Layer Meteorol.* **177** (2), 315–364.
- CANUTO, C., HUSSAINI, M.Y., QUARTERONI, A. & ZANG, T.A. 2012 *Spectral Methods in Fluid Dynamics*. Springer.
- CASTRO, I.P. 2007 Rough-wall boundary layers: mean flow universality. *J. Fluid Mech.* **585**, 469–485.
- CASTRO, I.P., KIM, J.W., STROH, A. & LIM, H.C. 2021 Channel flow with large longitudinal ribs. *J. Fluid Mech.* **915**, A92.
- CHAN, L., MACDONALD, M., CHUNG, D., HUTCHINS, N. & OOI, A. 2015 A systematic investigation of roughness height and wavelength in turbulent pipe flow in the transitionally rough regime. *J. Fluid Mech.* **771**, 743–777.

Examination of outer-layer similarity over obstructing surfaces

- CHAN, L., MACDONALD, M., CHUNG, D., HUTCHINS, N. & OOI, A. 2018 Secondary motion in turbulent pipe flow with three-dimensional roughness. *J. Fluid Mech.* **854**, 5–33.
- CHENG, H., HAYDEN, P., ROBINS, A.G. & CASTRO, I.P. 2007 Flow over cube arrays of different packing densities. *J. Wind Engng Ind. Aerodyn.* **95** (8), 715–740.
- CHUNG, D., HUTCHINS, N., SCHULTZ, M.P. & FLACK, K.A. 2021 Predicting the drag of rough surfaces. *Annu. Rev. Fluid Mech.* **53**, 439–471.
- CLAUSER, F.H. 1956 The turbulent boundary layer. *Adv. Appl. Mech.* **4**, 1–51.
- CONNELLY, J.S., SCHULTZ, M.P. & FLACK, K.A. 2006 Velocity-defect scaling for turbulent boundary layers with a range of relative roughness. *Exp. Fluids* **40** (2), 188–195.
- DIXON, A.G., WALLS, G., STANNES, H., NIJEMEISLAND, M. & STITT, E.H. 2012 Experimental validation of high Reynolds number CFD simulations of heat transfer in a pilot-scale fixed bed tube. *Chem. Engng J.* **200**, 344–356.
- ENDRIKAT, S., NEWTON, R., MODESTI, D., GARCÍA-MAYORAL, R., HUTCHINS, N. & CHUNG, D. 2022 Reorganisation of turbulence by large and spanwise-varying riblets. *J. Fluid Mech.* **952**, A27.
- ESTEBAN, L.B., RODRÍGUEZ-LÓPEZ, E., FERREIRA, M.A. & GANAPATHISUBRAMANI, B. 2022 Mean flow of turbulent boundary layers over porous substrates. *Phys. Rev. Fluids* **7** (9), 094603.
- FANG, H., HAN, X., HE, G. & DEY, S. 2018 Influence of permeable beds on hydraulically macro-rough flow. *J. Fluid Mech.* **847**, 552–590.
- FERZIGER, J.H. & PERIĆ, M. 2002 *Computational Methods for Fluid Dynamics*. Springer.
- FINNIGAN, J. 2000 Turbulence in plant canopies. *Annu. Rev. Fluid Mech.* **32** (1), 519–571.
- FLACK, K.A. & SCHULTZ, M.P. 2010 Review of hydraulic roughness scales in the fully rough regime. *J. Fluids Engng* **132** (4), 041203.
- FLACK, K.A. & SCHULTZ, M.P. 2014 Roughness effects on wall-bounded turbulent flows. *Phys. Fluids* **26** (10), 101305.
- FLACK, K.A. & SCHULTZ, M.P. 2023 Hydraulic characterization of sandpaper roughness. *Exp. Fluids* **64** (1), 3.
- FLACK, K.A., SCHULTZ, M.P. & CONNELLY, J.S. 2007 Examination of a critical roughness height for outer layer similarity. *Phys. Fluids* **19** (9), 095104.
- FLACK, K.A., SCHULTZ, M.P. & SHAPIRO, T.A. 2005 Experimental support for Townsend's Reynolds number similarity hypothesis on rough walls. *Phys. Fluids* **17** (3), 035102.
- GARCÍA-MAYORAL, R. & JIMÉNEZ, J. 2011 Hydrodynamic stability and breakdown of the viscous regime over riblets. *J. Fluid Mech.* **678**, 317–347.
- GHISALBERTI, M. 2009 Obstructed shear flows: similarities across systems and scales. *J. Fluid Mech.* **641**, 51–61.
- GRIMMOND, C.S.B. & OKE, T.R. 1999 Aerodynamic properties of urban areas derived from analysis of surface form. *J. Appl. Meteorol. Climatol.* **38** (9), 1262–1292.
- HAMA, F.R. 1954 Boundary layer characteristics for smooth and rough surfaces. *Trans. Soc. Nav. Archit. Mar. Engrs* **62**, 333–358.
- HOYAS, S. & JIMÉNEZ, J. 2006 Scaling of the velocity fluctuations in turbulent channels up to $Re_\tau = 2003$. *Phys. Fluids* **18** (1), 011702.
- HOYAS, S., OBERLACK, M., ALCÁNTARA-ÁVILA, F., KRAHEBERGER, S.V. & LAUX, J. 2022 Wall turbulence at high friction Reynolds numbers. *Phys. Rev. Fluids* **7** (1), 014602.
- IACCARINO, G. & VERZICCO, R. 2003 Immersed boundary technique for turbulent flow simulations. *Appl. Mech. Rev.* **56** (3), 331–347.
- JACKSON, P.S. 1981 On the displacement height in the logarithmic velocity profile. *J. Fluid Mech.* **111**, 15–25.
- JIMÉNEZ, J. 2004 Turbulent flows over rough walls. *Annu. Rev. Fluid Mech.* **36**, 173–196.
- JIMÉNEZ, J. & MOIN, P. 1991 The minimal flow unit in near-wall turbulence. *J. Fluid Mech.* **225**, 213–240.
- JIMÉNEZ, J. & MOSER, R.D. 2007 What are we learning from simulating wall turbulence? *Phil. Trans. R. Soc. A* **365** (1852), 715–732.
- KAMRIN, K., BAZANT, M.Z. & STONE, H.A. 2010 Effective slip boundary conditions for arbitrary periodic surfaces: the surface mobility tensor. *J. Fluid Mech.* **658**, 409–437.
- KARRA, S.K., APTE, S.V., HE, X. & SCHEIBE, T.D. 2023 Pore-resolved investigation of turbulent open channel flow over a randomly packed permeable sediment bed. *J. Fluid Mech.* **971**, A23.
- KAZEMIFAR, F., BLOIS, G., AYBAR, M., PEREZ CALLEJA, P., NERENBERG, R., SINHA, S., HARDY, R.J., BEST, J., SAMBROOK SMITH, G.H. & CHRISTENSEN, K.T. 2021 The effect of biofilms on turbulent flow over permeable beds. *Water Resour. Res.* **57** (2), e2019WR026032.
- KROGSTAD, P.-Å., ANDERSSON, H.I., BAKKEN, O.M. & ASHRAFIAN, A. 2005 An experimental and numerical study of channel flow with rough walls. *J. Fluid Mech.* **530**, 327–352.

- KROGSTAD, P.-Å., ANTONIA, R.A. & BROWNE, L.W.B. 1992 Comparison between rough- and smooth-wall turbulent boundary layers. *J. Fluid Mech.* **245**, 599–617.
- KROGSTADT, P.-Å. & ANTONIA, R.A. 1999 Surface roughness effects in turbulent boundary layers. *Exp. Fluids* **27** (5), 450–460.
- KUWATA, Y. & SUGA, K. 2017 Direct numerical simulation of turbulence over anisotropic porous media. *J. Fluid Mech.* **831**, 41–71.
- LE, H. & MOIN, P. 1991 An improvement of fractional step methods for the incompressible Navier–Stokes equations. *J. Comput. Phys.* **92** (2), 369–379.
- LEE, M. & MOSER, R.D. 2015 Direct numerical simulation of turbulent channel flow up to $Re_\tau \approx 5200$. *J. Fluid Mech.* **774**, 395–415.
- LEONARDI, S. & CASTRO, I.P. 2010 Channel flow over large cube roughness: a direct numerical simulation study. *J. Fluid Mech.* **651**, 519–539.
- LEONARDI, S., ORLANDI, P. & ANTONIA, R.A. 2007 Properties of d- and k-type roughness in a turbulent channel flow. *Phys. Fluids* **19** (12), 125101.
- LOZANO-DURÁN, A. & BAE, H.J. 2019 Characteristic scales of Townsend’s wall-attached eddies. *J. Fluid Mech.* **868**, 698–725.
- LOZANO-DURÁN, A. & JIMÉNEZ, J. 2014 Effect of the computational domain on direct simulations of turbulent channels up to $Re_\tau = 4200$. *Phys. Fluids* **26** (1), 011702.
- LU, T.J., STONE, H.A. & ASHBY, M.F. 1998 Heat transfer in open-cell metal foams. *Acta Mater.* **46** (10), 3619–3635.
- LUCCI, F., DELLA TORRE, A., MONTENEGRO, G., KAUFMANN, R. & EGGENSCHWILER, P.D. 2017 Comparison of geometrical, momentum and mass transfer characteristics of real foams to Kelvin cell lattices for catalyst applications. *Intl J. Heat Mass Transfer* **108**, 341–350.
- LUCHINI, P. 2017 Universality of the turbulent velocity profile. *Phys. Rev. Lett.* **118** (22), 224501.
- LUCHINI, P. 2018 Structure and interpolation of the turbulent velocity profile in parallel flow. *Eur. J. Mech. B* **71**, 15–34.
- LUHAR, M., ROMINGER, J. & NEPF, H. 2008 Interaction between flow, transport and vegetation spatial structure. *Environ. Fluid Mech.* **8**, 423–439.
- MACDONALD, M., CHAN, L., CHUNG, D., HUTCHINS, N. & OOI, A. 2016 Turbulent flow over transitionally rough surfaces with varying roughness densities. *J. Fluid Mech.* **804**, 130–161.
- MACDONALD, M., OOI, A., GARCÍA-MAYORAL, R., HUTCHINS, N. & CHUNG, D. 2018 Direct numerical simulation of high aspect ratio spanwise-aligned bars. *J. Fluid Mech.* **843**, 126–155.
- MANES, C., POGGI, D. & RIDOLFI, L. 2011 Turbulent boundary layers over permeable walls: scaling and near-wall structure. *J. Fluid Mech.* **687**, 141–170.
- MIZUNO, Y. & JIMÉNEZ, J. 2011 Mean velocity and length-scales in the overlap region of wall-bounded turbulent flows. *Phys. Fluids* **23** (8), 085112.
- MODESTI, D., ENDRIKAT, S., HUTCHINS, N. & CHUNG, D. 2021 Dispersive stresses in turbulent flow over riblets. *J. Fluid Mech.* **917**, A55.
- NEPF, H., GHISALBERTI, M., WHITE, B. & MURPHY, E. 2007 Retention time and dispersion associated with submerged aquatic canopies. *Water Resour. Res.* **43** (4), W04422.
- NEPF, H.M. 2012a Flow and transport in regions with aquatic vegetation. *Annu. Rev. Fluid Mech.* **44**, 123–142.
- NEPF, H.M. 2012b Hydrodynamics of vegetated channels. *J. Hydraul. Res.* **50** (3), 262–279.
- OKAZAKI, Y., TAKASE, Y., KUWATA, Y. & SUGA, K. 2021 Describing characteristic parameters of turbulence over two-dimensional porous roughness. *J. Therm. Sci. Technol.* **16** (2), JTST0027.
- OKAZAKI, Y., TAKASE, Y., KUWATA, Y. & SUGA, K. 2022 Turbulent channel flows over porous rib-roughed walls. *Exp. Fluids* **63** (4), 1–20.
- PEROT, J.B. 1993 An analysis of the fractional step method. *J. Comput. Phys.* **108** (1), 51–58.
- PERRY, A.E. & ABELL, C.J. 1977 Asymptotic similarity of turbulence structures in smooth- and rough-walled pipes. *J. Fluid Mech.* **79** (4), 785–799.
- PLACIDI, M. & GANAPATHISUBRAMANI, B. 2018 Turbulent flow over large roughness elements: effect of frontal and plan solidity on turbulence statistics and structure. *Boundary-Layer Meteorol.* **167** (1), 99–121.
- POGGI, D., PORPORATO, A., RIDOLFI, L., ALBERTSON, J.D. & KATUL, G.G. 2004 The effect of vegetation density on canopy sub-layer turbulence. *Boundary-Layer Meteorol.* **111** (3), 565–587.
- RAUPACH, M.R. 1992 Drag and drag partition on rough surfaces. *Boundary-Layer Meteorol.* **60** (4), 375–395.
- REYNOLDS, W.C. & HUSSAIN, A.K.M.F. 1972 The mechanics of an organized wave in turbulent shear flow. Part 3. Theoretical models and comparisons with experiments. *J. Fluid Mech.* **54** (2), 263–288.
- ROSTI, M.E. & BRANDT, L. 2017 Numerical simulation of turbulent channel flow over a viscous hyper-elastic wall. *J. Fluid Mech.* **830**, 708–735.

Examination of outer-layer similarity over obstructing surfaces

- SADIQUE, J., YANG, X.I.A., MENEVEAU, C. & MITTAL, R. 2017 Aerodynamic properties of rough surfaces with high aspect-ratio roughness elements: effect of aspect ratio and arrangements. *Boundary-Layer Meteorol.* **163** (2), 203–224.
- SCHULTZ, M.P. & FLACK, K.A. 2007 The rough-wall turbulent boundary layer from the hydraulically smooth to the fully rough regime. *J. Fluid Mech.* **580**, 381–405.
- SCHULTZ, M.P. & FLACK, K.A. 2013 Reynolds-number scaling of turbulent channel flow. *Phys. Fluids* **25** (2), 025104.
- SEO, J., GARCÍA-MAYORAL, R. & MANI, A. 2015 Pressure fluctuations and interfacial robustness in turbulent flows over superhydrophobic surfaces. *J. Fluid Mech.* **783**, 448–473.
- SHARMA, A. 2020 Turbulent flows over canopies. PhD thesis, University of Cambridge.
- SHARMA, A. & GARCÍA-MAYORAL, R. 2018 Turbulent flows over sparse canopies. *J. Phys. Conf. Ser.* **1001**, 012012.
- SHARMA, A. & GARCÍA-MAYORAL, R. 2020a Scaling and dynamics of turbulence over sparse canopies. *J. Fluid Mech.* **888**, A1.
- SHARMA, A. & GARCÍA-MAYORAL, R. 2020b Turbulent flows over dense filament canopies. *J. Fluid Mech.* **888**, A2.
- SHEN, G., YUAN, J. & PHANIKUMAR, M.S. 2020 Direct numerical simulations of turbulence and hyporheic mixing near sediment–water interfaces. *J. Fluid Mech.* **892**, A20.
- SHOCKLING, M.A., ALLEN, J.J. & SMITS, A.J. 2006 Roughness effects in turbulent pipe flow. *J. Fluid Mech.* **564**, 267–285.
- SQUIRE, D.T., MORRILL-WINTER, C., HUTCHINS, N., SCHULTZ, M.P., KLEWICKI, J.C. & MARUSIC, I. 2016 Comparison of turbulent boundary layers over smooth and rough surfaces up to high Reynolds numbers. *J. Fluid Mech.* **795**, 210–240.
- SUGA, K., MATSUMURA, Y., ASHITAKA, Y., TOMINAGA, S. & KANEDA, M. 2010 Effects of wall permeability on turbulence. *Int'l J. Heat Fluid Flow* **31** (6), 974–984.
- TACHIE, M.F., BERGSTROM, D.J. & BALACHANDAR, R. 2003 Roughness effects in low- Re_θ open-channel turbulent boundary layers. *Exp. Fluids* **35** (4), 338–346.
- TOWNSEND, A.A.R. 1976 *The Structure of Turbulent Shear Flow*. Cambridge University Press.
- TUERKE, F. & JIMÉNEZ, J. 2013 Simulations of turbulent channels with prescribed velocity profiles. *J. Fluid Mech.* **723**, 587–603.
- VOLLMER, S., DE LOS SANTOS RAMOS, F., DAEBEL, H. & KÜHN, G. 2002 Micro scale exchange processes between surface and subsurface water. *J. Hydrol.* **269** (1–2), 3–10.
- WOOD, B.D., HE, X. & APTE, S.V. 2020 Modeling turbulent flows in porous media. *Annu. Rev. Fluid Mech.* **52**, 171–203.
- WOODING, R.A., BRADLEY, E.F. & MARSHALL, J.K. 1973 Drag due to regular arrays of roughness elements of varying geometry. *Boundary-Layer Meteorol.* **5** (3), 285–308.
- WU, Y. & CHRISTENSEN, K.T. 2007 Outer-layer similarity in the presence of a practical rough-wall topography. *Phys. Fluids* **19** (8), 085108.
- XU, H.H.A., ALTLAND, S.J., YANG, X.I.A. & KUNZ, R.F. 2021 Flow over closely packed cubical roughness. *J. Fluid Mech.* **920**, A37.
- YANG, X.I.A., SADIQUE, J., MITTAL, R. & MENEVEAU, C. 2016 Exponential roughness layer and analytical model for turbulent boundary layer flow over rectangular-prism roughness elements. *J. Fluid Mech.* **789**, 127–165.
- ZHANG, B.-Y., HUANG, W.-X. & XU, C.-X. 2020 Rough-wall turbulence in minimal flow units with rod-roughened walls. *Phys. Fluids* **32** (11), 115120.