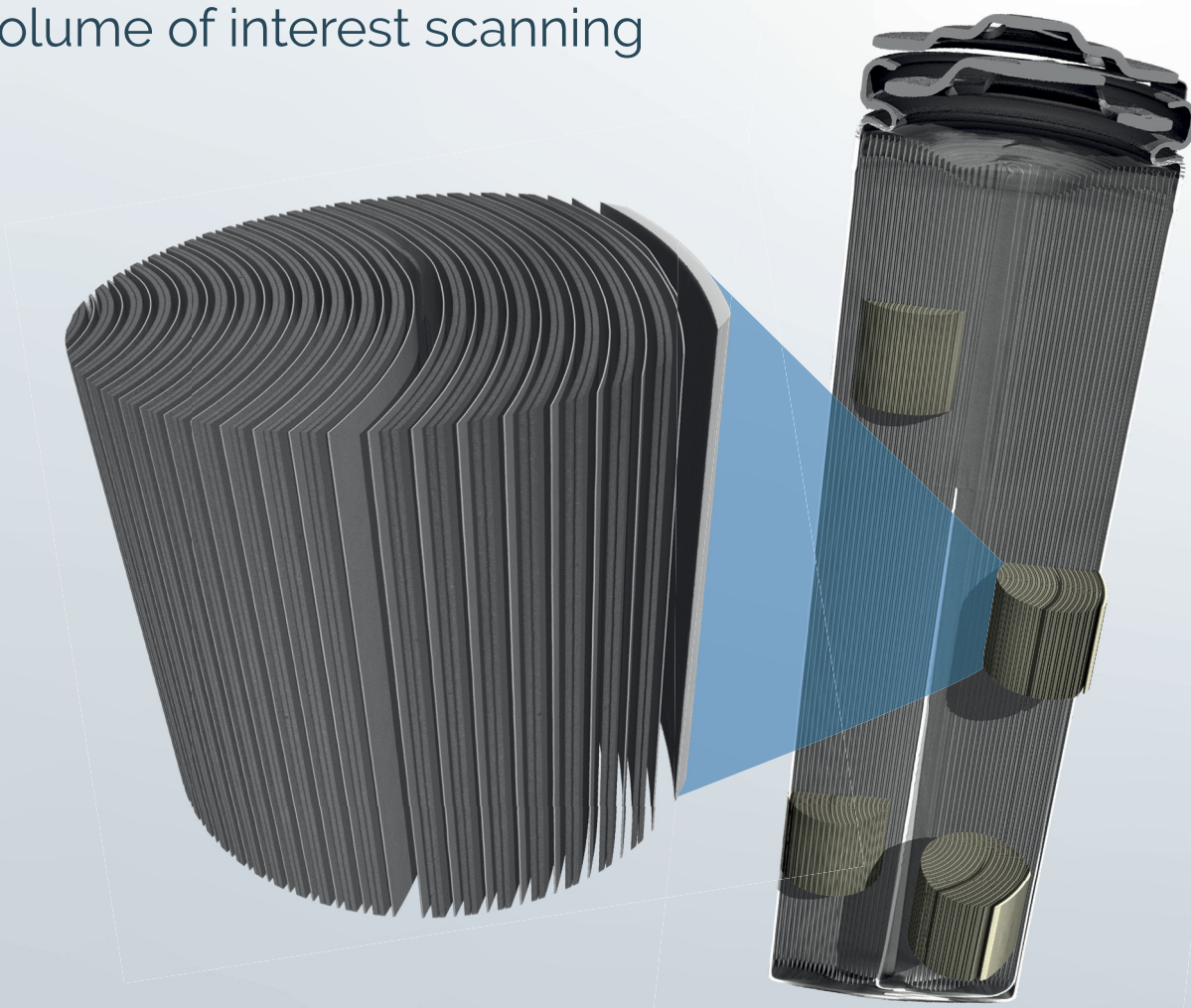
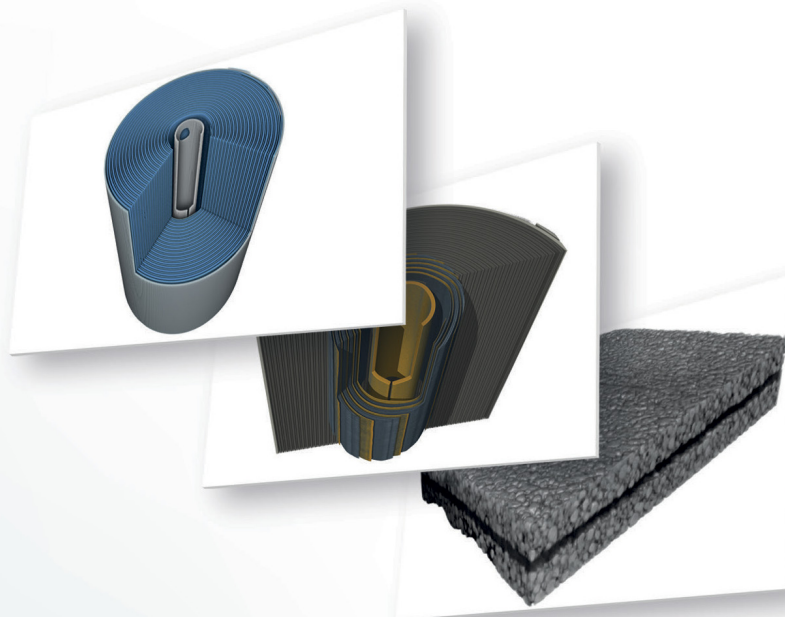

INDEX TO ADVERTISERS

Dectris	A6
Diatome	Cover 2
EDAX	A3
Electron Microscopy Sciences, EMS	Cover 4
Physik Instrumente	A4
Tescan	Cover 3

TESCAN micro-CT for battery research

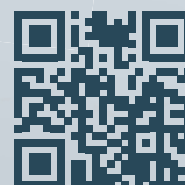
Fast, high-throughput
screening and intuitive
volume of interest scanning



What can you do with TESCAN micro-CT?

Contact us today to find out.

www.tescan.com



Visit us at M&M Booth #1544 to learn more about our micro-CT solutions!

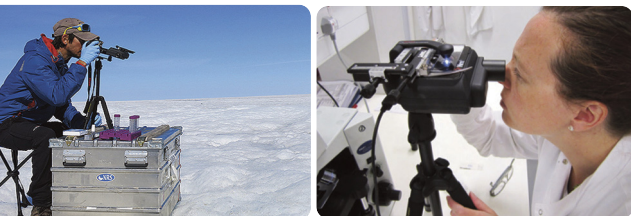
Em1 Portable Microscope

x400 x600 x1000

A new and exciting benchmark in the world of microscopy...

Revolutionary in design, portability and application — with a price that's accessible to everyone. The Em1 sets up in seconds for use in numerous industries and fields of study, from tropical disease diagnosis and forensic sciences, to laboratory or classroom settings.

- **Ultra Compact** — 154 x 122 x 64mm with a weight of just 480 grams
- **Precision Optics** — High quality, precision ground Schott glass optics
- **Exceptional Battery Life** — Up to 1,000 hours
- **X100 – X1000** — Sharp, high quality images at all magnifications
- **Mountings** — Two standard tripod mounting points for stability



Used world-wide in labs as well as the world's most challenging environments.

EMS has it!



Find out more

**Electron
Microscopy
Sciences**

www.emsdiasum.com

P.O. Box 550 • 1560 Industry Rd.
Hatfield, Pa 19440
Tel: (215) 412-8400
Fax: (215) 412-8450
email: info@emsdiasum.com
or stacie@ems-secure.com



High-resolution digital images can be captured using any smartphone and camera accessories.



the world's most versatile portable microscope...

Applications:

Healthcare/Medicine • Tropical Disease Diagnosis
Field Sciences • Science Education • Veterinary Pathology
Zoology • General Microscopy • Parasitology • Environmental Science
Geographical Surveys • Horticulture • Law Enforcement/Forensics
Micro-Photography • Defense/Security • Pollution Studies • Food Safety
Water Sanitation • Marine Science • Fiber Analysis • Industrial Accidents
Automotive Engineering • Insurance Claims Investigations

