


ARTICLE

Morphological and molecular phylogenetic analyses of *Zepedanulus ishikawai* (Arachnida: Opiliones: Laniatores: Epedanidae) in the southern part of the Ryukyu Archipelago

Yoshimasa Kumekawa^{1*} , Haruka Fujimoto², Osamu Miura³, Ryo Arakawa², Jun Yokoyama⁴, and Tatsuya Fukuda^{5,6}

¹Ehime University, The United Graduate School of Agricultural Sciences, Environmental Sciences, 200 Monobe, Nankoku, Kochi, 783-8502, Japan, ²Kochi University, Graduate School of Integrated Arts and Sciences, 200 Monobe, Nankoku, Kochi, 783-8502, Japan, ³Kochi University, Faculty of Agriculture and Marine Science, 200 Monobe, Nankoku, Kochi, 783-8502, Japan, ⁴Yamagata University, Faculty of Science, 1-4-12 Kojirakawa-machi, Yamagata, 990-8560, Japan, ⁵Tokyo City University, Faculty of Knowledge Engineering, 1-28-1, Tamazutsumi, Setagaya, Tokyo, 158-8557 Japan, and ⁶Tokyo City University, Faculty of Science and Engineering, 1-28-1, Tamazutsumi, Setagaya, Tokyo, 158-8557 Japan

*Corresponding author. Email: yoshikume1911@gmail.com

(Received 14 January 2020; accepted 25 June 2021; first published online 16 September 2021)

Abstract

Harvestmen (Arachnida: Opiliones) are soil animals with extremely low dispersal abilities that experienced allopatric differentiation. To clarify the morphological and phylogenetic differentiation of the endemic harvestman *Zepedanulus ishikawai* (Suzuki, 1971) (Laniatores: Epedanidae) in the southern part of the Ryukyu Archipelago, we conducted molecular phylogenetic analyses and divergence time estimates based on *COI* and *16S* rRNA sequences of mtDNA, the *28S* rRNA sequence of nrDNA, and the external morphology. A phylogenetic tree based on mtDNA sequences indicated that individuals of *Z. ishikawai* were monophyletic and were divided into clade I and clade II. This was supported by the nrDNA phylogenetic tree. Although clades I and II were distributed sympatrically on all three islands examined (Ishigaki, Iriomote, and Yonaguni), heterogeneity could not be detected by polymerase chain reaction–restriction fragment length polymorphism of nrDNA, indicating that clades I and II do not have a history of hybridisation. Also, several morphological characters differed significantly between individuals of clade I and clade II. The longstanding isolation of the southern Ryukyus from the surrounding islands enabled estimation of the original morphological characters of both clades of *Z. ishikawai*.

Introduction

Continental archipelagos are suitable for examining causal connections between geographical barriers, disjunct distributions, and genetic differentiation (Hedges *et al.* 1992; Hisheh *et al.* 1998; Atkins *et al.* 2001; Ohdachi *et al.* 2001; Poulakakis *et al.* 2003; Bittkau and Comes 2005; Velo-Antón *et al.* 2012). The Ryukyu Archipelago was the eastern margin of continental East Asia in the middle to late Miocene (15.97–5.333 million years ago). In the late Miocene to the early Pleistocene (5.333–0.774 million years ago), it fragmented into large islands and now includes approximately 140 islands scattered in an arc between Kyushu Island of Japan and Taiwan

Subject editor: Marla Schwarzfeld

© The Author(s), 2021. Published by Cambridge University Press on behalf of the Entomological Society of Canada. This is an Open Access article, distributed under the terms of the Creative Commons Attribution licence (<http://creativecommons.org/licenses/by/4.0/>), which permits unrestricted re-use, distribution, and reproduction in any medium, provided the original work is properly cited.

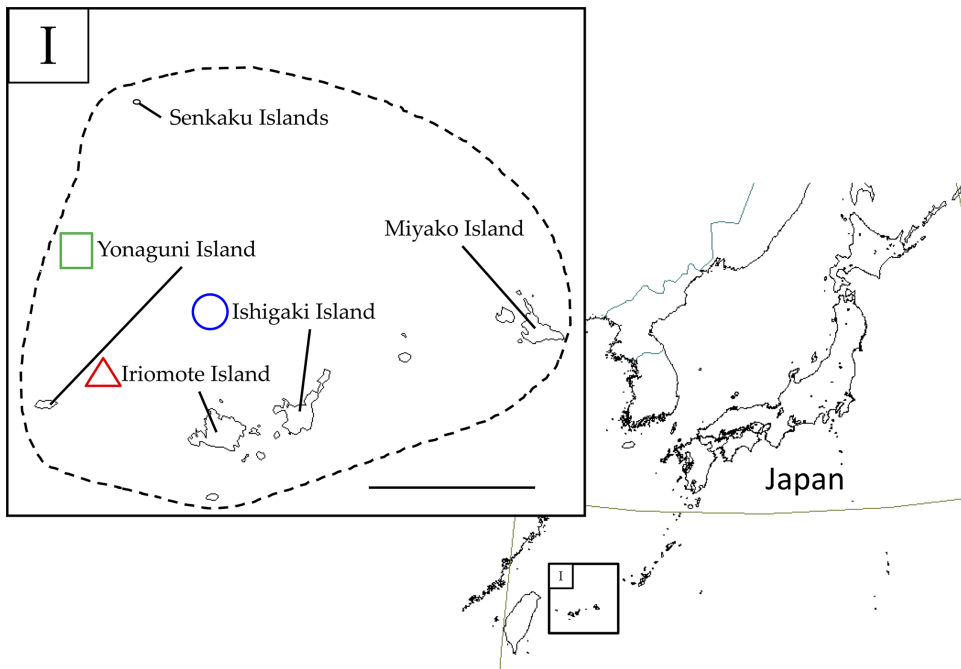


Fig. 1. Distribution of *Z. ishikawai* in the Ryukyu Archipelago, Japan.

(Kimura 2002; Osozawa *et al.* 2011). The islands are the product of the repeated formation and division of a land bridge to continental Asia that extended through Taiwan and Kyushu. Expansion and regression of the land bridge have been attributed to climatic oscillations in the Pliocene and Quaternary periods (Kimura 1996, 2000; Kizaki and Ohshiro 1977, 1980; Ujiie 1990; Ohshiro 2003; Keally 2005; Shinjo 2015). Plants and animals on the islands consist largely of relictual taxa that presumably differentiated from their relatives on the adjacent continent (Ota 1998; 2012). A number of biogeographic and evolutionary studies on the organisms of the Ryukyu Archipelago have been conducted and have enhanced our understanding of the biogeographic and evolutionary histories of organisms in continental archipelagos (*e.g.*, Ota 1998; Maekawa *et al.* 1999; Seo *et al.* 2004; Chiang and Schaal 2006; Seki *et al.* 2007; Nakamura *et al.* 2015; Kaito and Toda 2016).

In general, the low dispersal ability of flightless organisms leads to a low rate of gene flow, suggesting accelerated differentiation among populations (Zera 1981; Hansen 1983; Jablonski 1986; Smith and Farrell 2006; Miura *et al.* 2012). For example, Ikeda *et al.* (2011) reported that the loss of flight accelerates allopatric speciation among carrion beetles (Coleoptera: Silphidae). Flightless soil animals have also been found to exhibit extensive differentiation among allopatric populations (Tsurusaki 2006a). In the Ryukyu Archipelago, for example, *Kilungius insulanus* (Hirst, 1911) (Opiliones: Epedanidae) is a species of harvestman that is genetically differentiated between Amami-Oshima and Okinawa Islands in the middle of the archipelago (Kumekawa *et al.* 2015). *Zepedanulus ishikawai* (Suzuki, 1971) (Opiliones: Epedanidae) is another species of harvestman, belonging to the same family as *K. insulanus*. It is approximately 5 mm in body length, lives in humid places under forest litter, and is distributed in the southern Ryukyu Archipelago, namely Miyako, Ishigaki, Iriomote, Yonaguni, and Senkaku Islands (Fig. 1; Suzuki 1973; Tsurusaki and Suzuki, 2015). This scattered distribution of *Z. ishikawai* might promote the differentiation of populations on different islands. In fact, allopatric speciation, where geographic isolation results in speciation,

is widely accepted (Mayr 1963; Coyne and Orr 2004; Bolnick and Fitzpatrick 2007), and the accidental differentiation such as a genetic drift found between allopatric populations has led to substantial postzygotic isolation it is also known to bring about (Dobzhansky 1937). The presence of physical barriers, such as oceans, rivers, or high mountains, will cause populations isolated by these boundaries to undergo different accumulations of variation over time from isolation. If reproductive isolation is acquired through this, it is likely that even if the isolation is subsequently resolved, the populations will not be able to interbreed with each other, and each population will have its own history.

Recently developed molecular techniques allow phylogenies to be reconstructed and the systematic relationships among species or populations within a given species to be evaluated. Application of mitochondrial DNA as a marker for phylogenetic and phylogeographic surveys enables evaluation of intraspecific population structures and differentiation (*e.g.*, Avise 2000, 2009). Several phylogenetic and phylogeographic studies of harvestman have been based on mitochondrial DNA sequences (Giribet *et al.* 1999; Thomas and Hedin 2008; Sharma and Giribet 2009, 2011; Derkarabetian *et al.* 2010, 2011; Giribet *et al.* 2010; Hedin and Thomas 2010; Burns *et al.* 2012; Sharma 2010; Sharma *et al.* 2012; Kumekawa *et al.* 2014, 2015; Didodemico and Hedin 2016; Emata and Hedin 2016; Cruz-López *et al.* 2019). It is also widely accepted that selecting suitable genetic markers is important in phylogeny and phylogeography studies, and a number of studies using mitochondrial DNA data have demonstrated the utility of the mitochondrial genes cytochrome c oxidase subunit I (*COI*) and 16S ribosomal RNA (rRNA). Particularly for shallow-level animal molecular phylogeny and phylogeography, these genes enable accurate identification at the species (or lower) level through comparative analyses of sequence variations in short, standardised fragments of the genome (Hebert *et al.* 2003; Jinbo *et al.* 2011). We thus assessed the differentiation among *Z. ishikawai* populations on different islands using the sequences of *COI* and 16S rRNA in mitochondrial DNA.

The congruence of multiple genetic trees enables assessment of the reliability of a hypothesis regarding the evolutionary relationships of organisms. Indeed, even phylogenetic incongruence may provide a window into evolutionary processes that cannot be accessed using a single gene data set. Although a mitochondrial DNA phylogenetic tree allows clarification of the evolutionary relationships of a given species, it cannot clarify certain evolutionary processes because of its maternal inheritance. Theoretically, incongruence between a genetic tree and species phylogeny, or among different genetic trees, can result from a variety of evolutionary processes, such as conflation of orthology and paralogy, incomplete lineage sorting of ancestral polymorphism, and introgressive hybridisation (Rieseberg and Soltis 1991; Wendel and Doyle 1998; Maddison and Knowles 2006; Toews and Brelsford 2012). Of these, introgressive hybridisation and incomplete lineage sorting frequently lead to phylogenetic incongruence among different data sets at lower taxonomic levels (Avise *et al.* 1983; Cronn and Wendel 2004). Incongruence among genetic trees should be confirmed using data from nuclear DNA in addition to mitochondrial DNA. In fact, Schlick-Steiner *et al.* (2010) claimed that it is necessary to analyse various types of information to clarify the relationships among and differentiation within, populations within of a species. Among nuclear DNA sequences, 28S rRNA is particularly useful for differentiating taxa among groups of organisms (Nunn *et al.* 1996; Friedrich and Tautz 1997; Babcock *et al.* 2001; Schmidt *et al.* 2006; Taylor and Rogers 2015; Che *et al.* 2016), suggesting that this gene could be used to resolve the phylogenetic relationships of *Z. ishikawai*. In addition, the analysis of polymerase chain reaction–restriction fragment length polymorphisms has been used to show whether hybridisation and introgression occur in a variety of species (Hollingsworth *et al.* 1999; Nijman *et al.* 1999; Mráz *et al.* 2005; Oleksa *et al.* 2011; Vaini *et al.* 2014; Kumekawa *et al.* 2019).

Therefore, we evaluated the differentiation of *Z. ishikawai* populations among islands using 28S rRNA in nuclear DNA and compared the results with gene fragments of mitochondrial DNA. We

also analysed the morphological characters of *Z. ishikawai* to determine whether the populations could be distinguished morphologically.

Materials and methods

Sample collection

We collected *Z. ishikawai* by hand from three major islands of the Yaeyama Islands, in the southernmost part of the Ryukyu Archipelago (Ishigaki, Iriomote, and Yonaguni Islands; Table 1; Fig. 2).

DNA extraction, amplification, sequencing, and polymerase chain reaction–restriction fragment length polymorphism analysis

We extracted DNA from a leg using DNeasy kits (Qiagen, Valencia, California, United States of America), according to the manufacturer's protocol for animal tissue samples. The isolated DNA was resuspended in an appropriate volume of Tris-ethylenediaminetetraacetic acid buffer (pH 8.0) and stored at -20°C until use. For all specimens, we amplified the *COI* and *16S* rRNA genes in mitochondrial DNA and the *28S* rRNA gene in nuclear DNA. The *COI* gene fragments were amplified and sequenced using primers published previously (Kumekawa *et al.* 2014). The *16S* rRNA and *28S* rRNA gene fragments were amplified and sequenced using the primers of Xiong and Kocher (1991) and Mallatt and Sullivan (1998), respectively. Amplification of DNA followed the method of Kumekawa *et al.* (2013). The reaction solution (50 μL) contained 50 ng of total DNA, 10 mM Tris (hydroxymethyl) aminomethane hydrochloride buffer (pH 8.3) with 50 mM potassium chloride and 1.5 mM magnesium dichloride, 0.2 mM of each deoxyribonucleotide triphosphate, 1.25 U *Taq* DNA polymerase (TaKaRa, Tokyo, Japan), and 0.5 μM of each primer. The following thermal cycle was applied: incubation at 94°C for 10 seconds, followed by 45 cycles of incubation at 94°C for 1.5 minutes, 48°C for 2 minutes, and 72°C for 3 minutes, with a final extension at 72°C for 15 minutes. After amplification, the reaction mixtures were subjected to electrophoresis in 1% low melting-temperature agarose gels, and the products were purified using QuickSpin kits (Qiagen) according to the manufacturer's specifications. We sequenced the purified polymerase chain reaction products using a BigDye Terminator Cycle Sequencing Kit (Applied Biosystems, Tokyo, Japan) and ABI PRISM 3100-*Avant* Genetic Analyzer (Applied Biosystems) according to the manufacturers' instructions.

We also carried out polymerase chain reaction–restriction fragment length polymorphism analysis, because autapomorphic characters (clade II, see Results) of *28S* rRNA are involved in the restriction site *HaeIII* (GGCC). We designed the following primers to assess the length of the restriction fragments and conducted polymerase chain reaction as above, using the primers Zepe28S-RFLP-F: 5'-GCC CTC GAA GTT CGG AGG CG-3' and Zepe28S-RFLP-R: 5'-CAC CCG GCT ACC TAC CGG TT-3'. The amplified products were digested by *HaeIII* at 37°C for more than 1 hour. The digested DNAs were separated in a 1.5% agarose gel and the size of each band was determined.

Data analysis

To construct phylogenetic trees for *Z. ishikawai* and related species (Table 1), 58 nucleotide sequences were aligned using the ClustalW program (Thompson *et al.* 1994) implemented in MEGA, version 6, software (Tamura *et al.* 2013). The positions containing gaps and missing data were eliminated manually. A Bayesian analysis was conducted using MrBayes, version 3.1.2, software (Ronquist and Huelsenbeck 2003). We considered the model with the lowest log-likelihood score to be the most accurate description of the substitution pattern. The

Table 1. Summary of *Zepedanulus ishikawai* analysed in this study. Specimen number corresponds to our phylogenetic results (Figs. 3, 4, 5, and 6).

Species	Specimen no.	Location				Accession no.			Reference
		Island	Province	City	Site	16S	CO1	28S	
<i>Zepedanulus ishikawai</i>	1	Ishigaki	Okinawa	Ishigaki	Nosoko	LC481750	LC481751	LC481793	This study
	2	Ishigaki	Okinawa	Ishigaki	Nosoko	LC481752	LC481753	LC481794	This study
	3	Ishigaki	Okinawa	Ishigaki	Nosoko	LC481748	LC481749	LC481795	This study
	4	Ishigaki	Okinawa	Ishigaki	Nosoko	LC481746	LC481747	LC481796	This study
	5	Ishigaki	Okinawa	Ishigaki	Nosoko	LC481744	LC481745	LC481797	This study
	6	Ishigaki	Okinawa	Ishigaki	Nosoko	LC481742	LC481743	LC481798	This study
	7	Ishigaki	Okinawa	Ishigaki	Nosoko	LC481738	LC481739	LC481799	This study
	8	Ishigaki	Okinawa	Ishigaki	Nosoko	LC481736	LC481737	LC481800	This study
	9	Ishigaki	Okinawa	Ishigaki	Nosoko	LC481732	LC481733	LC481801	This study
	10	Ishigaki	Okinawa	Ishigaki	Nosoko	LC481734	LC481735	LC481802	This study
	11	Ishigaki	Okinawa	Ishigaki	Nosoko	LC481740	LC481741	LC481803	This study
	12	Ishigaki	Okinawa	Ishigaki	Nosoko	LC481730	LC481731	LC481804	This study
	13	Ishigaki	Okinawa	Ishigaki	Nosoko	LC481706	LC481707	LC481805	This study
	14	Ishigaki	Okinawa	Ishigaki	Nagura	LC481690	LC481691	LC481806	This study
	15	Ishigaki	Okinawa	Ishigaki	Sakieda	LC481692	LC481693	LC481807	This study
	16	Ishigaki	Okinawa	Ishigaki	Sakieda	LC481708	LC481709	LC481808	This study
	17	Ishigaki	Okinawa	Ishigaki	Tonoshiro	LC481710	LC481711	LC481809	This study
	18	Ishigaki	Okinawa	Ishigaki	Arakawa	LC481688	LC481689	LC481810	This study
	19	Ishigaki	Okinawa	Ishigaki	Tonoshiro	LC481724	LC481725	LC481811	This study
	20	Ishigaki	Okinawa	Ishigaki	Tonoshiro	LC481716	LC481717	LC481812	This study
	21	Ishigaki	Okinawa	Ishigaki	Tonoshiro	LC481714	LC481715	LC481813	This study
	22	Ishigaki	Okinawa	Ishigaki	Tonoshiro	LC481718	LC481719	LC481814	This study

(Continued)

Table 1. (Continued)

Species	Specimen no.	Location				Accession no.			Reference
		Island	Province	City	Site	16S	CO1	28S	
	23	Ishigaki	Okinawa	Ishigaki	Tonoshiro	LC481720	LC481721	LC481815	This study
	24	Ishigaki	Okinawa	Ishigaki	Tonoshiro	LC481722	LC481723	LC481816	This study
	25	Iriomote	Okinawa	Yaeyama	Taketomi	LC481694	LC481695	LC481817	This study
	26	Iriomote	Okinawa	Yaeyama	Taketomi	LC481758	LC481759	LC481818	This study
	27	Iriomote	Okinawa	Yaeyama	Taketomi	LC481754	LC481755	LC481819	This study
	28	Iriomote	Okinawa	Yaeyama	Taketomi	LC481756	LC481757	LC481820	This study
	29	Yonaguni	Okinawa	Yaeyama	Yonaguni	LC481712	LC481713	LC481821	This study
	30	Yonaguni	Okinawa	Yaeyama	Yonaguni	LC481762	LC481763	LC481822	This study
	31	Yonaguni	Okinawa	Yaeyama	Yonaguni	LC481764	LC481765	LC481823	This study
	32	Yonaguni	Okinawa	Yaeyama	Yonaguni	LC481698	LC481699	LC481824	This study
	33	Yonaguni	Okinawa	Yaeyama	Yonaguni	LC481700	LC481701	LC481825	This study
	34	Yonaguni	Okinawa	Yaeyama	Yonaguni	LC481686	LC481687	LC481826	This study
	35	Yonaguni	Okinawa	Yaeyama	Yonaguni	LC481684	LC481685	LC481827	This study
	36	Yonaguni	Okinawa	Yaeyama	Yonaguni	LC481696	LC481697	LC481828	This study
	37	Iriomote	Okinawa	Yaeyama	Taketomi	LC481704	LC481705	LC481829	This study
	38	Iriomote	Okinawa	Yaeyama	Taketomi	LC481760	LC481761	LC481830	This study
	39	Ishigaki	Okinawa	Ishigaki	Nagura	LC481702	LC481703	LC481831	This study
	40	Ishigaki	Okinawa	Ishigaki	Sakieda	LC481726	LC481727	LC481832	This study
	41	Ishigaki	Okinawa	Ishigaki	Sakieda	LC481728	LC481729	LC481833	This study
Allied species									
<i>Tokunosia tenuipes</i>	42	Amami	Kagoshima	Oshima	Setouchi	LC481777	LC481778	LC481834	This study
	43	Amami	Kagoshima	Oshima	Setouchi	LC481779	LC481780	LC481835	This study

(Continued)

Table 1. (Continued)

Species	Specimen no.	Location				Accession no.			Reference
		Island	Province	City	Site	16S	CO1	28S	
<i>Kilungius insulanus</i>	44	Amami	Kagoshima	Oshima	Setouchi	LC481775	AB981648	-	This study
	45	Amami	Kagoshima	Oshima	Setouchi	LC481787	LC481788	-	This study
	46	Okinawa	Okinawa	Kunigami	Kunigami	LC481776	AB937967	-	This study
	47	Okinawa	Okinawa	Kunigami	Kunigami	LC481786	AB937970	-	This study
<i>Pseudobiantes japonicus</i>	48	-	Shizuoka	Izu	Odaira	LC481770	LC481771	-	This study
	49	-	Wakayama	Kushimoto	Oshima	LC481792	AB937853	-	This study
	50	-	Tokushima	Naka	Naka	LC481766	LC481767	-	This study
	51	-	Kochi	Muroto	Kirakawa	LC481790	LC481791	-	This study
	52	-	Kochi	Kochi	Tosayama	LC481768	LC481769	-	This study
	53	-	Kochi	Otsuki	Kashiratsudo	LC481789	AB937808	-	This study
	54	Tanegashima	Kagoshima	Nisinoomote	Nisinoomote	LC481772	LC481773	-	This study
	55	-	Kagoshima	Kagoshima	Koriyama	LC481783	AB937932	-	This study
	<i>Epedanellus tuberculatus</i>	56	-	Ehime	Seiyo	Shirokawa	LC481774	AB937902	-
57		-	Kochi	Hata	Mihara	LC481784	LC481785	-	This study
Out group									
<i>Idzubius akiyamae</i>	58	-	Kochi	Takaoka	Shimanto	LC481781	LC481782	-	This study
<i>Parabeloniscus</i> sp.	59	Amami	Kagoshima	Amami	Kasari	LC481367	LC481368	-	This study

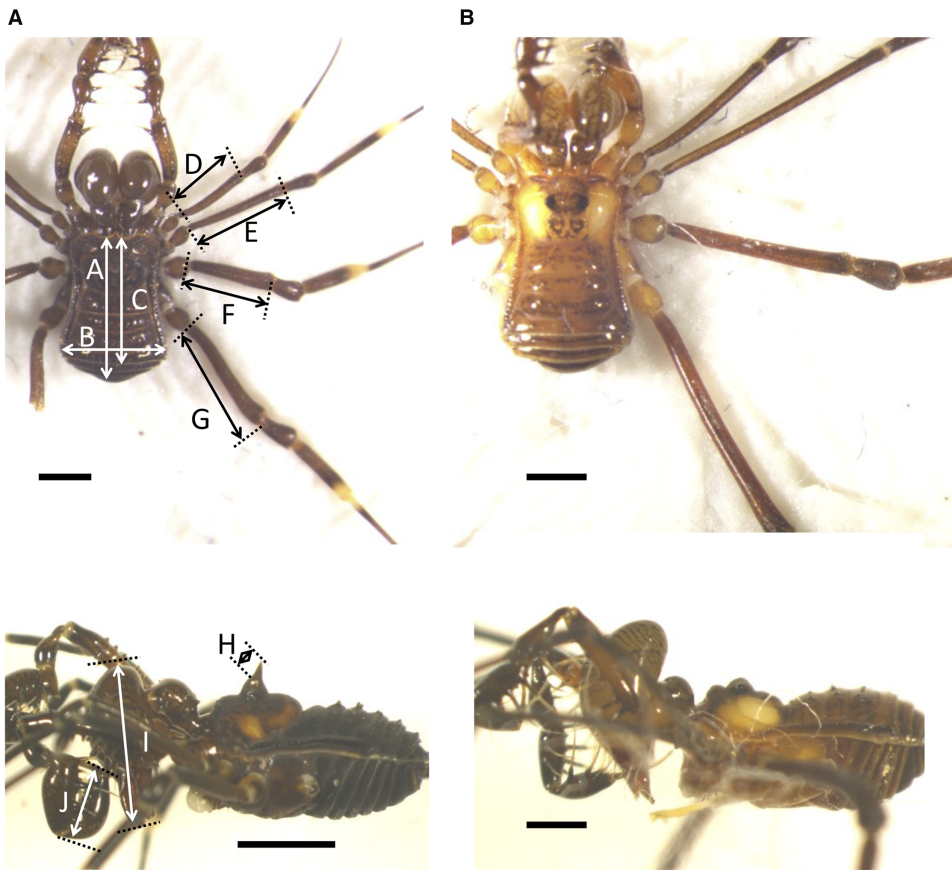


Fig. 2. (A) Spined type and (B) nonspined type, and characters of *Zepedanulus ishikawai* (collected from Yonaguni Island): A, BL – body length; B, CL – carapace length; C, CW – carapace width; D, Fe1L – femur length, first leg; E, Fe2L – femur length, second leg; F, Fe3L – femur length, third leg; G, Fe4L – femur length, fourth leg; H, SL – spine length; I, Chel.L – chelicerae length; and J, PTL – palpal-tarsus length, and the morphology of the second scutal area. Arrowhead indicates the spine. Scale bar = 1 mm.

Akaike information criterion value of each model was calculated. The best-fit model (mitochondrial DNA, GTR + I + G model; nuclear DNA, F81 model) selected by hLRT in MrModeltest 2.3 (Nylander 2004) and PAUP* 4.0b10 (Swofford 2002) software was used. We ran four Markov chains for 50 million generations and sampled Markov chains every 100 generations; 20% of the runs were discarded as burn-in. The effective sample size (ESS) of each parameter indicated by Tracer version 1.6, software (Rambaut *et al.* 2014) confirmed that the number of Markov chain generations was sufficient (ESS > 200). The maximum-likelihood method was conducted using MEGA, version 6.06, software (Tamura *et al.* 2013). The model test function in MEGA was used to select the appropriate model for maximum-likelihood analysis by considering the model with the lowest Bayesian information criterion scores as the most accurate description of the substitution pattern. For each model, the Akaike information criterion-corrected value, maximum-likelihood value (lnL), and the number of parameters (including branch lengths) are presented (Nei and Kumar 2000). The nonuniformity of evolutionary rates among sites may be modelled using a discrete gamma distribution (+ G) with five rate categories and a parameter for invariable sites (+ I). The relative values of instantaneous r should be considered when evaluating them. For simplicity, the sum of r values is made equal to 1 for each model. To estimate maximum-likelihood values, a tree

topology was automatically computed. Nodal support in maximum-likelihood trees was measured by bootstrapping (1000 samples).

The divergence times of the clades were estimated for all individuals used for phylogenetic analyses. Divergence times were inferred using an uncorrelated relaxed lognormal clock, implemented in BEAST, version 2.6.2, software (Bouckaert *et al.* 2019). Because there are no mitochondrial DNA molecular clocks available for *Zepedanulus* or related harvestman species, we conservatively adopted a wide range of estimated divergence rates for arthropods from 0.21% (Clouse and Wheeler 2014) to 3.34% per million years (Pons and Vogler 2005) for the *COI* gene, and 0.45% (Gomez-Zurita *et al.* 2000) to 1.9% per million years (Percy *et al.* 2004) for the *16S* gene. Prior distributions for mean substitution rates were sampled from a log normal distribution (clock.rate = 0.006, sigma = 0.8 for the *COI* gene; clock.rate = 0.005, sigma = 0.5 for the *16S* gene). We used the same substitution model as the Bayesian analysis and used the Yule process as a tree prior. We constrained the monophyly of two clades. The analysis was run for 500 million generations, sampled every 50 000 steps, and the first 1000 samples were discarded as burn-in. We used Tracer, version 1.6 (Rambaut *et al.* 2014), and FIGTREE, version 1.4.2 (Rambaut 2014), software to check for convergence and to visualise the results.

Morphological analysis

For morphological analysis, the body length, carapace length, carapace width, femur lengths of the first to fourth legs, spine length, chelicerae length, and palpal-tarsus length were measured for each *Z. ishikawai* specimen (Fig. 2). We measured the morphological characters of 139 *Z. ishikawai* individuals (39 from Ishigaki Island, 34 from Iriomote Island, and 66 from Yonaguni Island). Measurements were performed using cellSens standard imaging software (Olympus Co., Tokyo). Statistical analysis was conducted by Tukey–Kramer test ($P < 0.05$).

Results

Molecular analysis of *Zepedanulus ishikawai* and related species

We reconstructed phylogenetic relationships using 43 samples (27 from Ishigaki Island, eight from Yonaguni Island, and six from Iriomote Island) of *Z. ishikawai* and related species (Table 1), including previously published sequences of the *COI* and *16S* rRNA genes in mitochondrial DNA. Of these, even though only one sample of *Epedanellus tuberculatus* was used in the analysis of the *16S* rRNA and *COI* sequences, four samples of *Penaeus japonicus* and two of *K. insulanus* were analysed because previous studies indicated that these species are divided into four and two groups, respectively (Kumekawa *et al.* 2014, 2015). The combined length of the *COI* and *16S* rRNA sequences in *Z. ishikawai* was 765 bp (*16S* rRNA, 287 bp; *COI*, 478 bp). We reconstructed phylogenetic trees based on the maximum-likelihood (Fig. 3) and Bayesian inference (Fig. 4) methods. The branching patterns of the *Z. ishikawai* maximum-likelihood phylogenetic tree were identical to those of the tree that was based on Bayesian inference (Figs. 3 and 4). The phylogenetic trees based on the *COI* and *16S* rRNA genes indicated that individuals of *Z. ishikawai* composed a monophyletic group with a high bootstrap value (96%) and high posterior probability (1.00). The species *Z. ishikawai* was divided into two clades, henceforth referred to as clade I and clade II (Fig. 3). Clade I was not strongly supported in the maximum-likelihood tree (68%), but Bayesian analysis indicated a high posterior probability for the clade (1.00). Clade I involved three monophyletic subgroups clades IA, IB, and IC. Clade IA consisted of individuals from Ishigaki Island and was the sister group of clade IB, which comprised from Iriomote Island. Clade IC was the sister group

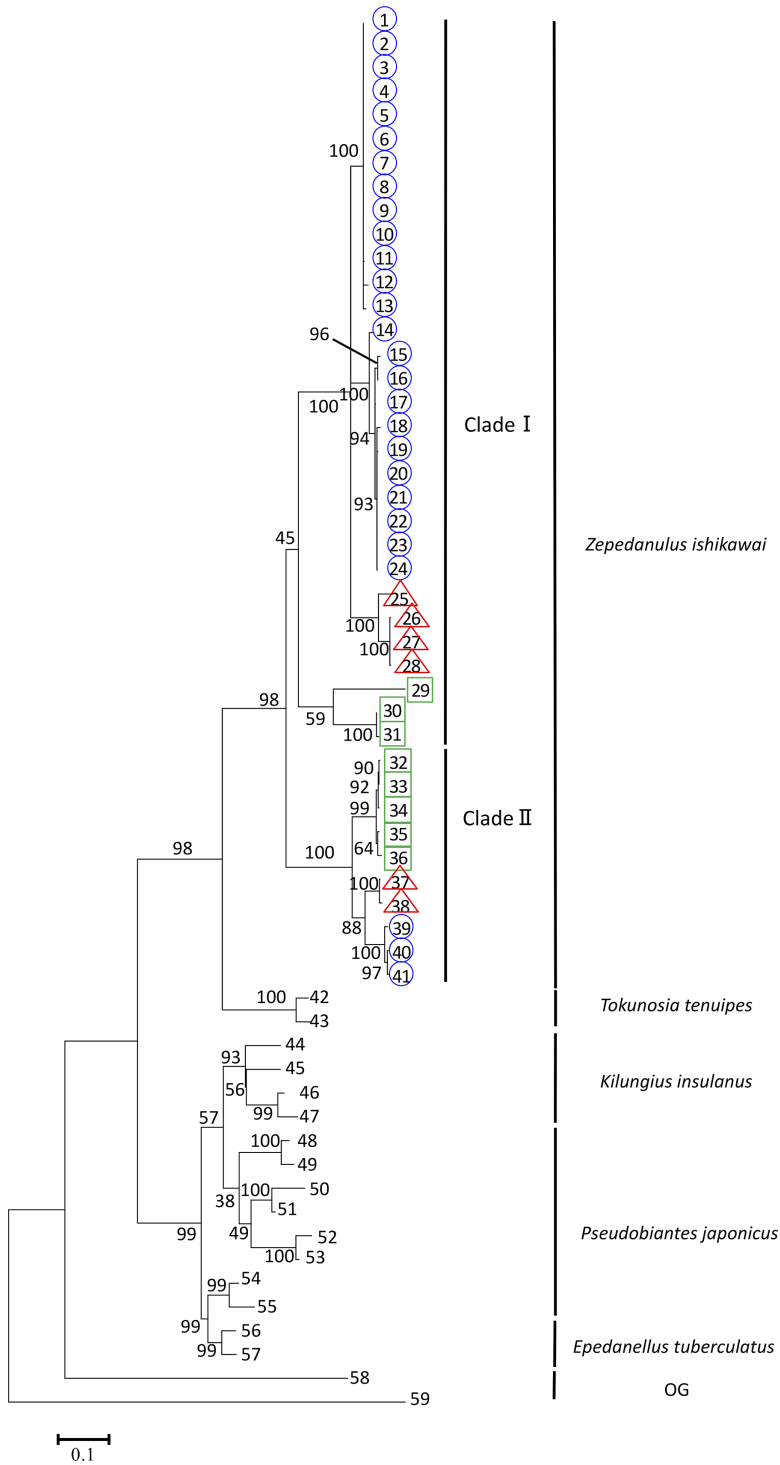


Fig. 3. Phylogenetic tree of *Zepedanulus ishikawai* and related species with outgroups by the maximum-likelihood method based on the sequences of *COI* and *16S rRNA* in mtDNA. Numbers above or below branches indicate bootstrap values. Symbols indicate the origin of samples: ○, Ishigaki Island; △, Iriomote Island; □, Yonaguni Island.

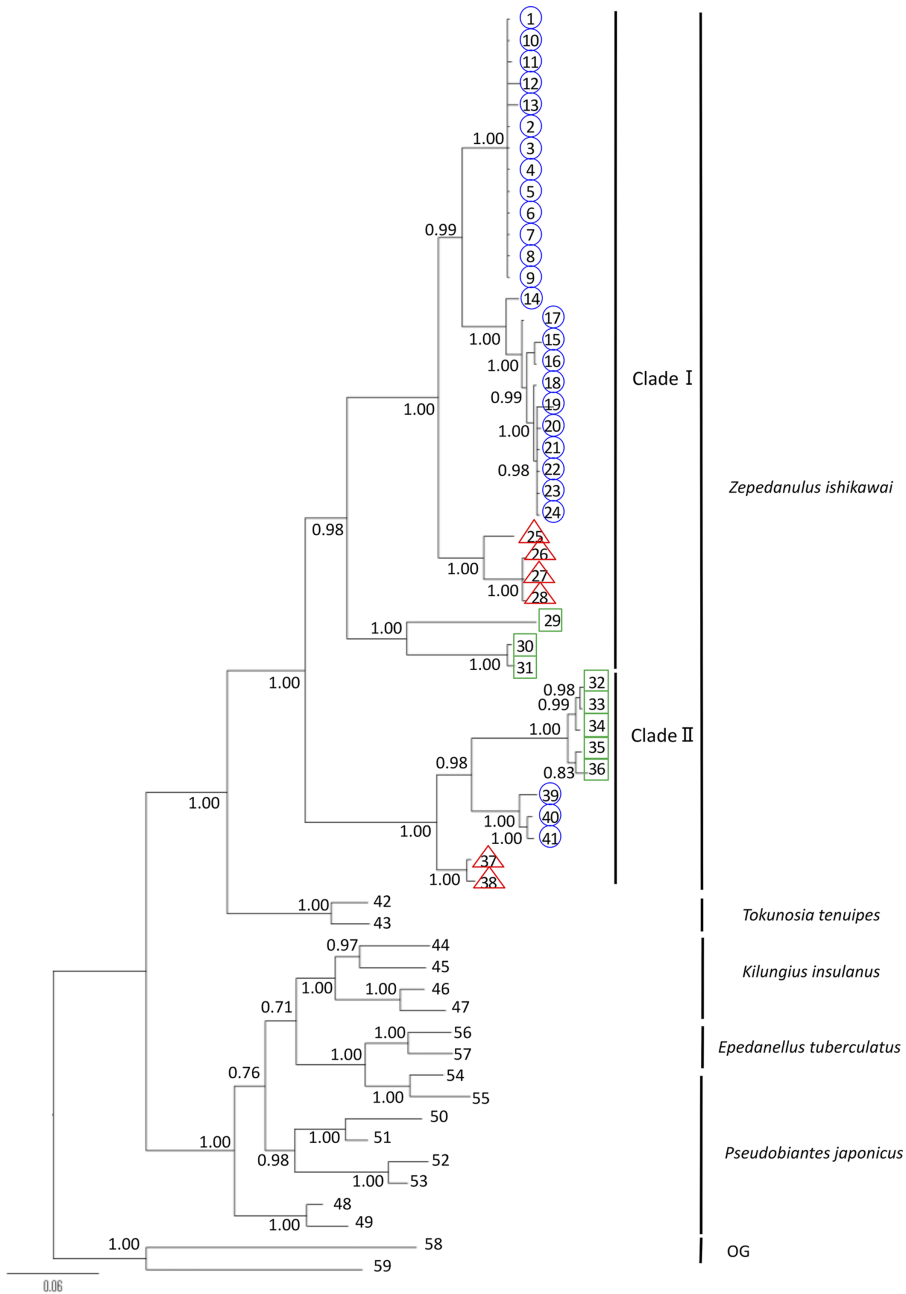


Fig. 4. Phylogenetic tree of *Zepedanulus ishikawai* and related species with outgroups by Bayesian inference based on the sequences of *COI* and *16S* rRNA in mtDNA. Numbers above or below branches indicate posterior probabilities. Symbols indicate the origin of samples: ○, Ishigaki Island; △, Iriomote Island; □, Yonaguni Island.

to the combined clade of IA + IB, and comprised samples from Yonaguni Island. These three groups had high bootstrap values (70–100%) and posterior probabilities (0.99–1.00). Clade II, which had high support values (100% maximum-likelihood bootstrap and 1.00 Bayesian posterior probability values), also comprised three monophyletic subgroups clades IIA,

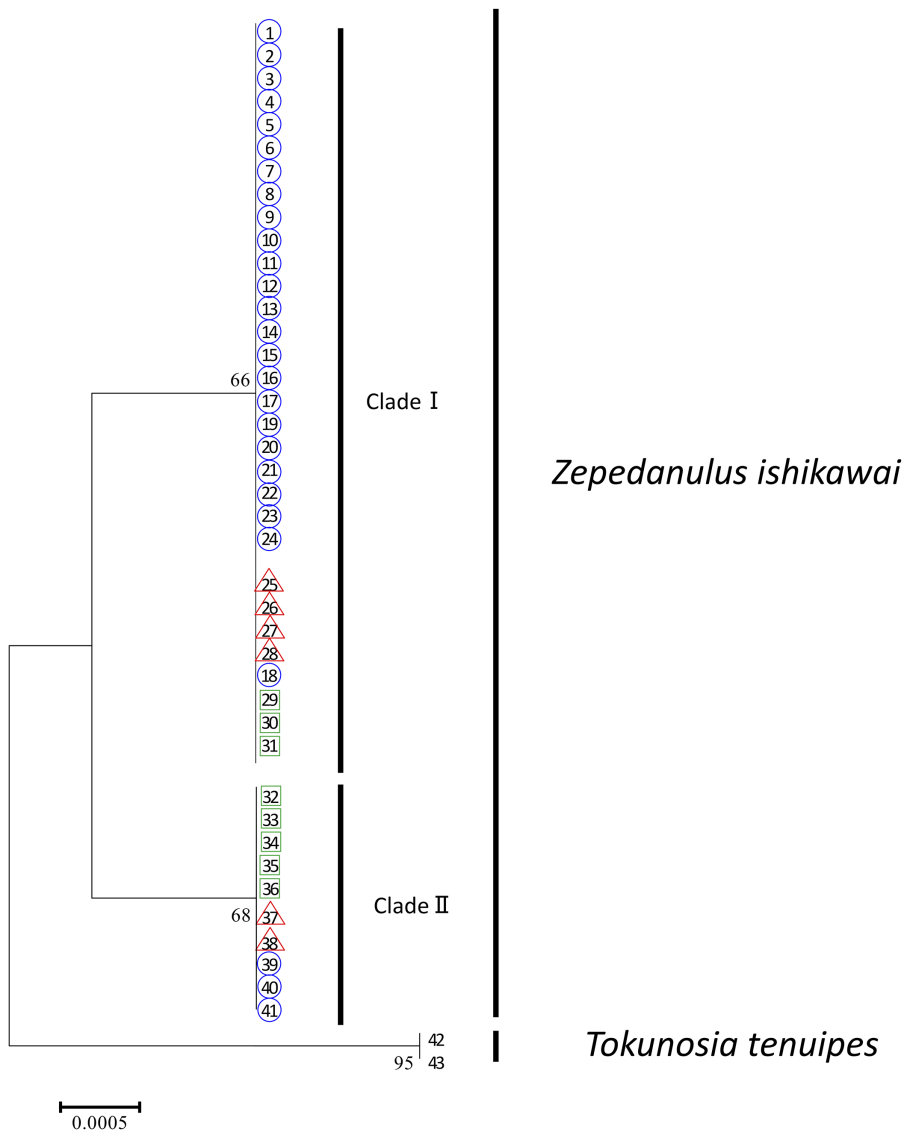


Fig. 5. Phylogenetic tree of *Zepedanulus ishikawai* and related species with outgroups by the maximum-likelihood method based on the sequence of 28S rRNA in nrDNA. Numbers above or below branches indicate the bootstrap values. Symbols indicate the origin of samples: ○, Ishigaki Island; △, Iriomote Island; □, Yonaguni Island.

IIB, and IIC. The branching patterns of clade II were identical to those of clade I, and individuals of Yonaguni Island, Ishigaki Island, and Iriomote Island constituted monophyletic groups of clades IIA, IIB, and IIC with high support values (100% maximum-likelihood bootstrap and 1.00 Bayesian posterior probability values), respectively.

The phylogenetic tree based on the 28S rRNA gene in nuclear DNA was constructed using *Z. ishikawai* and *Tokunosia tenuipes*, which was revealed to be a sister species of *Z. ishikawai* based on the mitochondrial DNA phylogenetic tree (Figs. 5 and 6). The length of the *Z. ishikawai* 28S rRNA sequence was 978 base pairs. As for mitochondrial DNA data sets, we reconstructed phylogenetic trees based on the maximum-likelihood (Fig. 5) and Bayesian

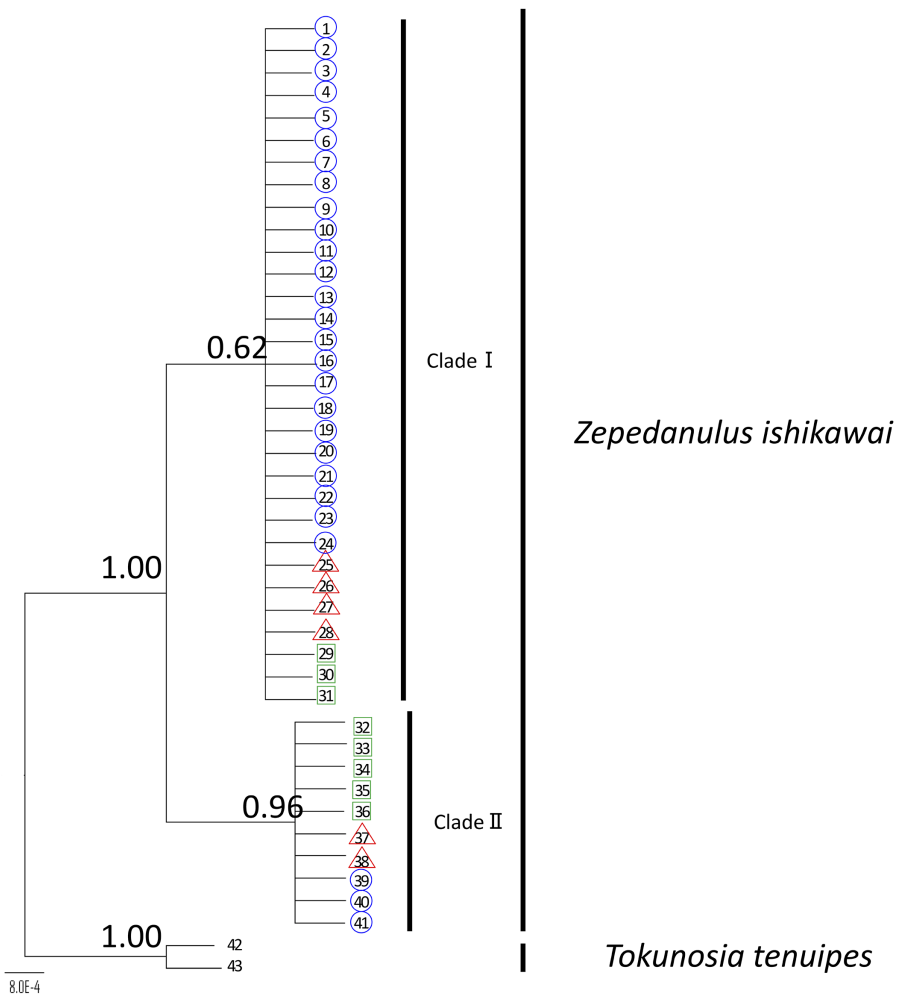


Fig. 6. Phylogenetic tree of *Zepedanulus ishikawai* and related species with outgroups by Bayesian inference based on the sequence of 28S rRNA in nrDNA. Numbers above or below branches indicate the posterior probabilities. Symbols indicate the origin of samples: ○, Ishigaki Island; △, Iriomote Island; □, Yonaguni Island.

inference (Fig. 6) methods. The major branching patterns of the phylogenetic trees based on 28S rRNA were similar to those of the mitochondrial DNA trees. The phylogenetic trees indicated that individuals of *Z. ishikawai* comprised a monophyletic group and were divided into two groups. These groups corresponded to clades I and II in the mitochondrial DNA phylogenetic tree.

Our phylogenetic analyses of mitochondrial DNA and 28S rRNA sequences both indicated the presence of two identical clades. Clades I and II were sympatrically distributed on all three islands examined, and no incongruence of mitochondrial DNA and nuclear DNA was observed. Therefore, whether hybrids of individuals of clades I and II on each of the three islands could form is unclear because assessing heterogeneity at polymorphic sites in nuclear DNA using the results of Sanger sequencing can be problematic (Simsek *et al.* 2001). Based on the above analyses, we found that the 28S rRNA sequences of clade II had *Hae*III restriction sites, whereas those of clade I did not (Fig. 7). We conducted polymerase chain reaction–restriction fragment length polymorphism to evaluate hybridisation and introgression between clade I and clade II of *Z. ishikawai*. No hybridisation or introgression between clade I and clade II of *Z. ishikawai* was detected on the three islands (Fig. 7).

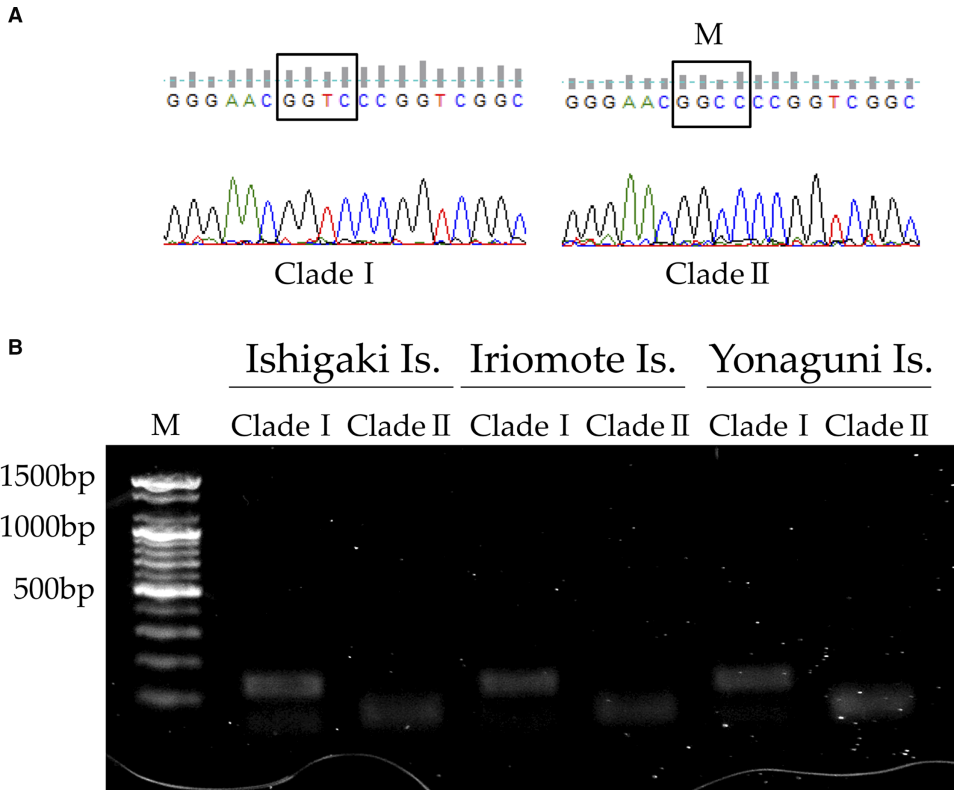


Fig. 7. **A**, Restriction sites in the 28S rRNA sequence determined by polymerase chain reaction–restriction fragment length polymorphism (M, *Hae*III site) and **B**, polymerase chain reaction–restriction fragment length polymorphism profile of clades I and II of *Zepedanulus ishikawai* (M, size markers).

The dated tree of *Z. ishikawai* is shown in Figure 8. The tree exhibited that the divergence of clade I and clade II occurred about 28 million years ago (47–13 million years ago: 95% 4-hydroxyphenylpyruvate dioxygenase). In addition, the divergence time of the three groups of clade I occurred about 25 million years ago, and the divergence time of the three groups of clade II occurred about 10 million years ago.

Morphological analysis of *Zepedanulus ishikawai*

All examined morphological characters of clade I were significantly larger than those of clade II (Table 2; Figs. 9–11). No significant differences within the same clade were found among the islands. The spine length could not be measured for individuals of clade I because they lacked an eye-spine and spine on the second suctal area. Therefore, the spine length was measured only for individuals of clade II.

Discussion

A phylogenetic tree of the mitochondrial DNA sequences of *Z. ishikawai* indicated that the species consisted of two phylogenetic groups clades I and II which was supported by the phylogenetic tree based on the 28S rRNA gene. Our morphological analyses indicated that individuals of clade I could be distinguished from those of clade II not only quantitatively (significant differences in body length, carapace length, carapace width, chelicerae length,

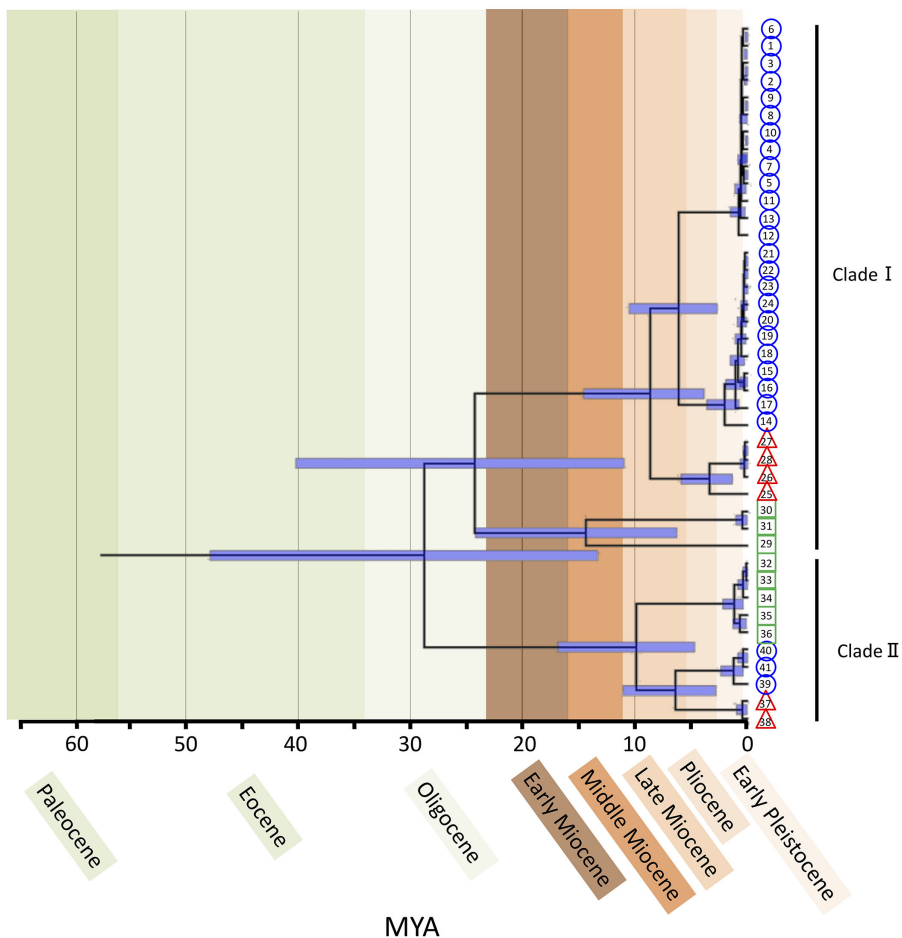


Fig. 8. Estimated divergence time (over millions of years ago; MYA) for the two clades of *Zepedanulus ishikawai*. Horizontal bars represent the upper and lower 95% of highest posterior density values. Symbols indicate the origin of samples: ○, Ishigaki Island; △, Iriomote Island; □, Yonaguni Island.

palpal-tarsus length, spine length, and the femur lengths of the first to fourth legs) but also qualitatively (presence of an eye-spine and a spine in the second succal area). Both groups contain individuals on three islands (Ishigaki, Iriomote, and Yonaguni), suggesting that both groups are distributed sympatrically throughout the southern Ryukyu Archipelago. This has consequences for the diversification of *Z. ishikawai*, because two morphologically and genetically differentiated groups were apparent at the species level. We did not detect incongruence of the branching patterns of the phylogenetic trees based on mitochondrial DNA and nuclear DNA sequences (Figs. 3, 4, 5, and 6) or on nuclear DNA heterogeneity by polymerase chain reaction–restriction fragment length polymorphism, despite collecting samples from sympatric populations on each island (Fig. 7). In addition, the body colour differed between clades on all the islands (clade I, yellow; clade II, dark brown on Ishigaki and Iriomote Islands, and clade I, brown; clade II, black on Yonaguni Island; Fig. 12). We therefore infer that these two groups represent reproductively isolated species. Suzuki (1971) reported that the total body length of *Z. ishikawai* was 3.65 mm in males and 2.81–3.24 mm in females and that the legs of the type specimen of *Z. ishikawai* were comparatively long. Although a new taxonomic treatment is needed, based on Suzuki's description of legs and total body length, clade I is *Z. ishikawai* and a new name is needed for clade II.

Table 2. The measurement (average \pm standard deviation) of *Zepedanulus ishikawai*.

	Clade			
	I		II	
	Male	Female	Male	Female
Fe1L (μm)	2338.14 \pm 175.65	2208.17 \pm 145.60	2338.14 \pm 175.65	1193.66 \pm 84.72
Fe2L (μm)	4076.25 \pm 348.77	3869.74 \pm 282.26	1845.55 \pm 103.00	1723.38 \pm 122.79
Fe3L (μm)	3034.60 \pm 240.70	2950.06 \pm 197.47	1418.33 \pm 93.57	1358.57 \pm 98.35
Fe3L (μm)	4367.70 \pm 342.97	4249.15 \pm 317.29	1987.96 \pm 117.79	18883.19 \pm 143.15
BL (μm)	3157.12 \pm 335.97	3337.73 \pm 217.95	2593.00 \pm 170.43	2530.60 \pm 243.55
CL (μm)	2589.43 \pm 171.61	2545.81 \pm 135.78	2042.23 \pm 170.44	1968.90 \pm 112.92
CW (μm)	2068.91 \pm 185.16	2219.55 \pm 86.05	1715.80 ^{114.60}	1762.49 \pm 106.16
SL (μm)	0	0	256.49 \pm 67.82	204.73 \pm 58.28
PTL (μm)	927.35 \pm 89.61	920.71 \pm 45.83	927.35 \pm 89.61	660.12 \pm 42.24
Chel.L (μm)	2114.80 \pm 420.27	1254.53 \pm 129.07	2114.80 \pm 420.27	1032.84 \pm 65.41

Abbreviations: Fe1L, femur length, first leg; Fe2L, femur length, second leg; Fe3L, femur length, third leg; Fe4L, femur length, fourth leg; BL, body length; CL, carapace length; CW, carapace width; SL, spine length; PTL, palpal-tarsus length; Chel.L, chelicerae length.

The phylogeographic patterns of organisms on the islands have been influenced by the formation of the continental island systems, which offer relatively simple arenas for the evolutionary dynamics of community assembly, because harvestmen are generally small and spatially isolated beyond their vagility. Prior phylogeographic studies reported that the current distribution of biological diversity cannot be understood without information about how organisms responded to historical changes in geological and climatic conditions (e.g., Arbogast and Kenagy 2001; Fukuda *et al.* 2001; Griffin and Barrett 2004; Hewitt 2004; Vink *et al.* 2005; Matsumura *et al.* 2009; Minamiya *et al.* 2009; Fukuda *et al.* 2011; Maura *et al.* 2014; Mezzasalma *et al.* 2015). Kumekawa *et al.* (2014) suggested that *Pseudobiantes japonicus* comprised four allopatric groups with morphological and genetic differences, and based on the current distribution and historical changes of suitable habitats, these groups had undergone independent northward spread by various routes from allopatric refugia distributed along the coasts of the Pacific Ocean in the western part of the main island of Japan. It is intriguing to consider how *Z. ishikawai* colonised the southern part of the Ryukyu Archipelago despite the presence of a barrier to expansion. The southern part of the Ryukyu Archipelago formed the eastern margin of continental East Asia in the mid to late Miocene (15.97–5.333 million years ago) and then fragmented into large islands, breaking the direct land connection to China, in the late Miocene to the early Pleistocene (5.333–0.774 million years ago; Kimura 2002; Osozawa *et al.* 2012). This suggests that *Z. ishikawai* colonised the archipelago region from continental East Asia during this period. Subsequently, sea levels ranged from 200 m higher to 200 m lower than present-day sea level, likely due to climatic oscillations during the Quaternary period. Lower islands were then either largely or completely submerged during the interglacial age (Kimura 1996). During this period, subsidence created two deep-water passages through the island arc, namely the Tokara Gap and the Kerama Gap, which divide the Ryukyu area into three groups: the northern, central, and southern Ryukyus (Osozawa *et al.* 2012). Although the islands were repeatedly fragmented into smaller islands and reconnected in the middle to late Pleistocene (0.774–0.0017 million years ago), the existence of land connections across the two gaps after their opening is unlikely, even during the Quaternary glacial sea level minima, because the ocean depth is > 1000 m between the constituent island groups (Ota 1998; Kawana 2002;

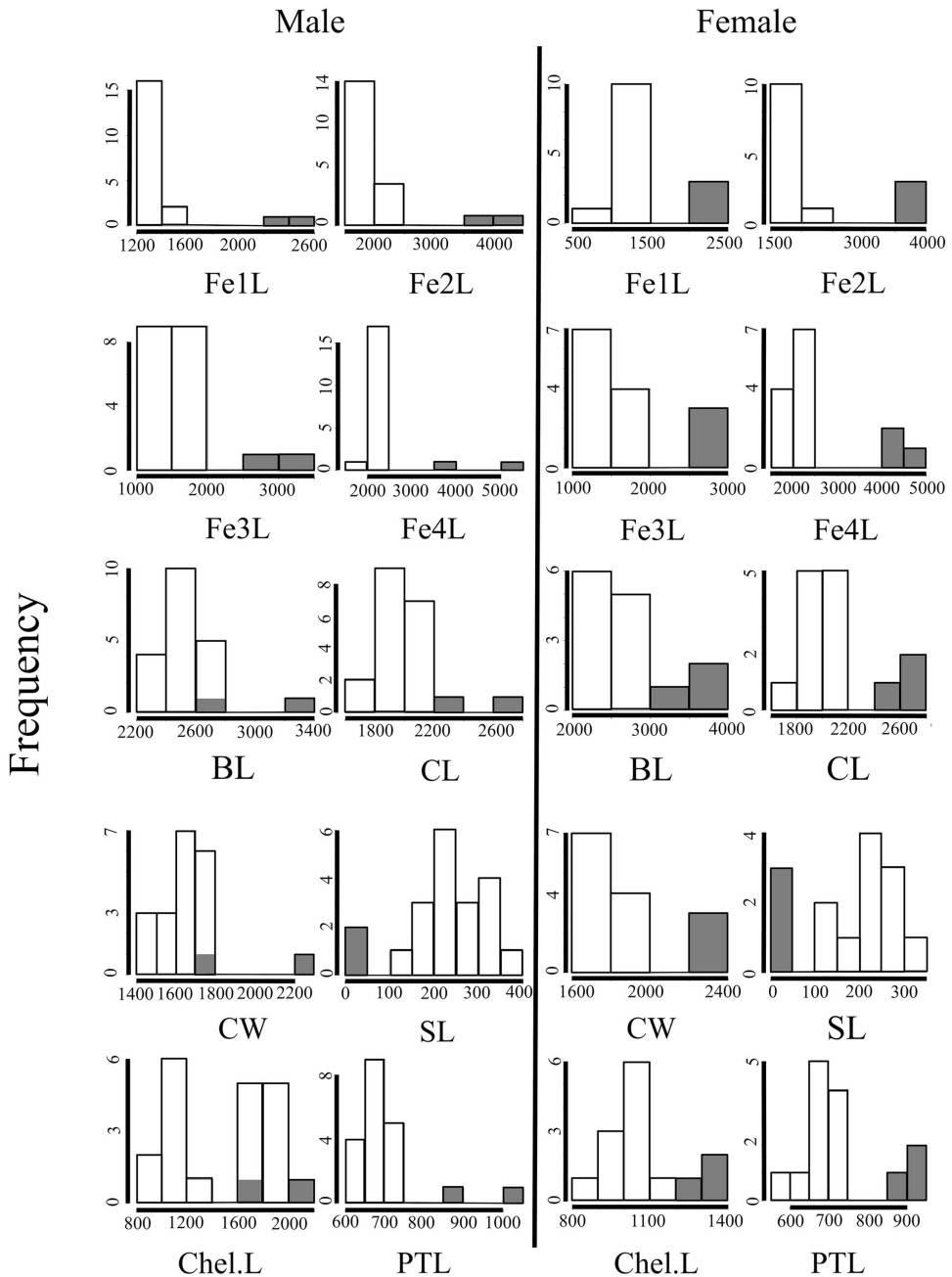


Fig. 9. Histograms of the morphological characteristics of *Zepedanulus ishikawai* in Iriomote Island. White and grey colours indicate clade I and clade II, respectively. Abbreviations: Fe1L, femur length, first leg; Fe2L, femur length, second leg; Fe3L, femur length, third leg; Fe4L, femur length, fourth leg; BL, body length; CL, carapace length; CW, carapace width; SL, spine length; Chel.L, chelicerae length; PTL, palpal-tarsus length.

Osozawa *et al.* 2012). These gaps acted as strong barriers, even for flying insect species, and resulted in the generation of endemic species (e.g., Osozawa *et al.* 2013, 2015). Tsurusaki (2006b) reported that Opiliones fauna is divided into three categories along the above island groups, based on cluster analysis using the similarity index. Therefore,

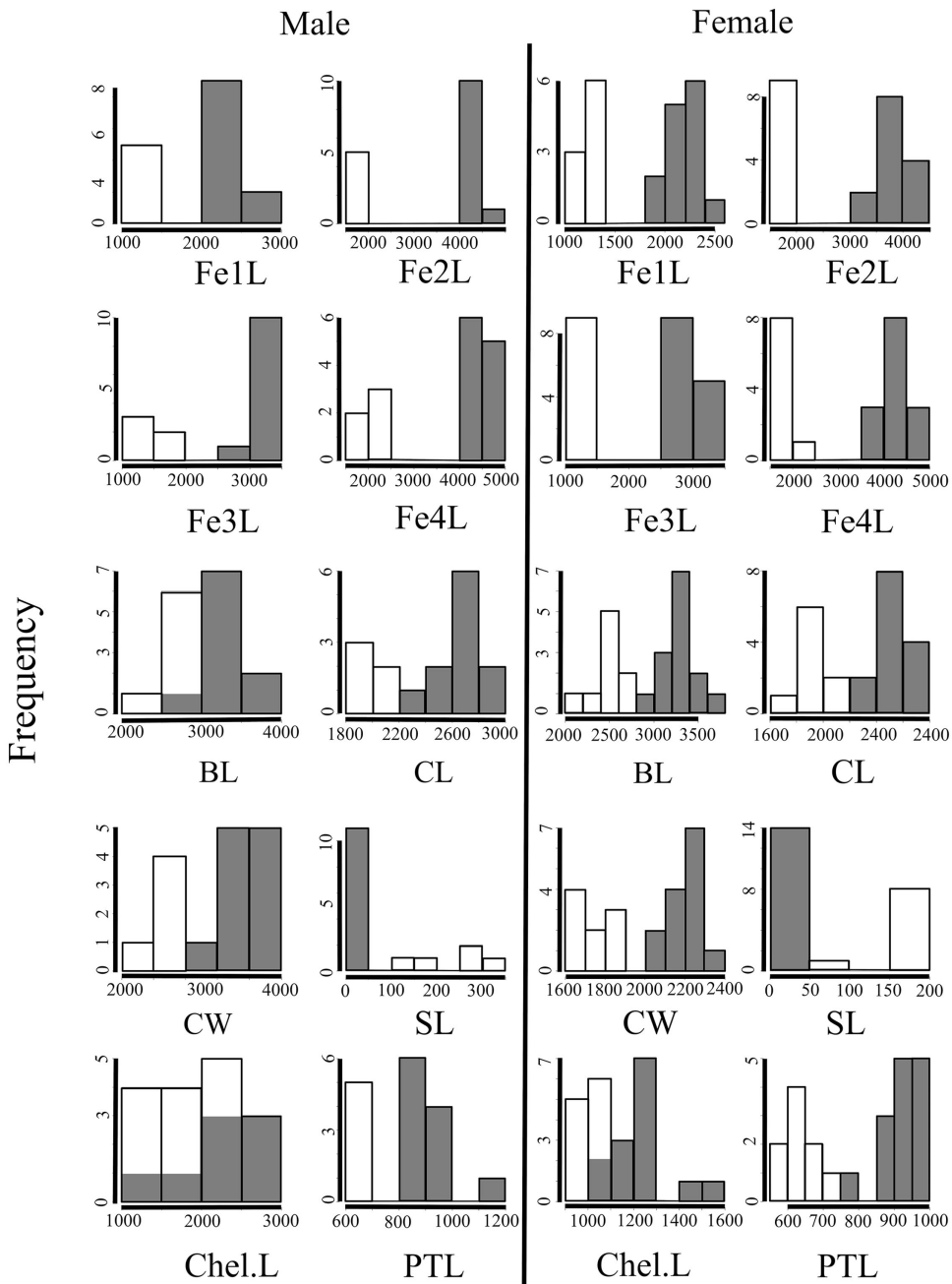


Fig. 10. Histograms of the morphological characteristics of *Zepedanulus ishikawai* in Ishigaki Island. White and grey colours indicate clade I and clade II, respectively. Abbreviations: Fe1L, femur length, first leg; Fe2L, femur length, second leg; Fe3L, femur length, third leg; Fe4L, femur length, fourth leg; BL, body length; CL, carapace length; CW, carapace width; SL, spine length; Chel.L, chelicerae length; PTL, palpal-tarsus length.

Z. ishikawai could not cross the Kerama Gap and is included in the third category of Tsurusaki (2006b). Alternatively, the land connection between Yonaguni Island, which is about 130 km from Taiwan Island and is the westernmost area in the distribution of *Z. ishikawai*, and Taiwan Island ceased in the early Pleistocene (2.58 million years ago),

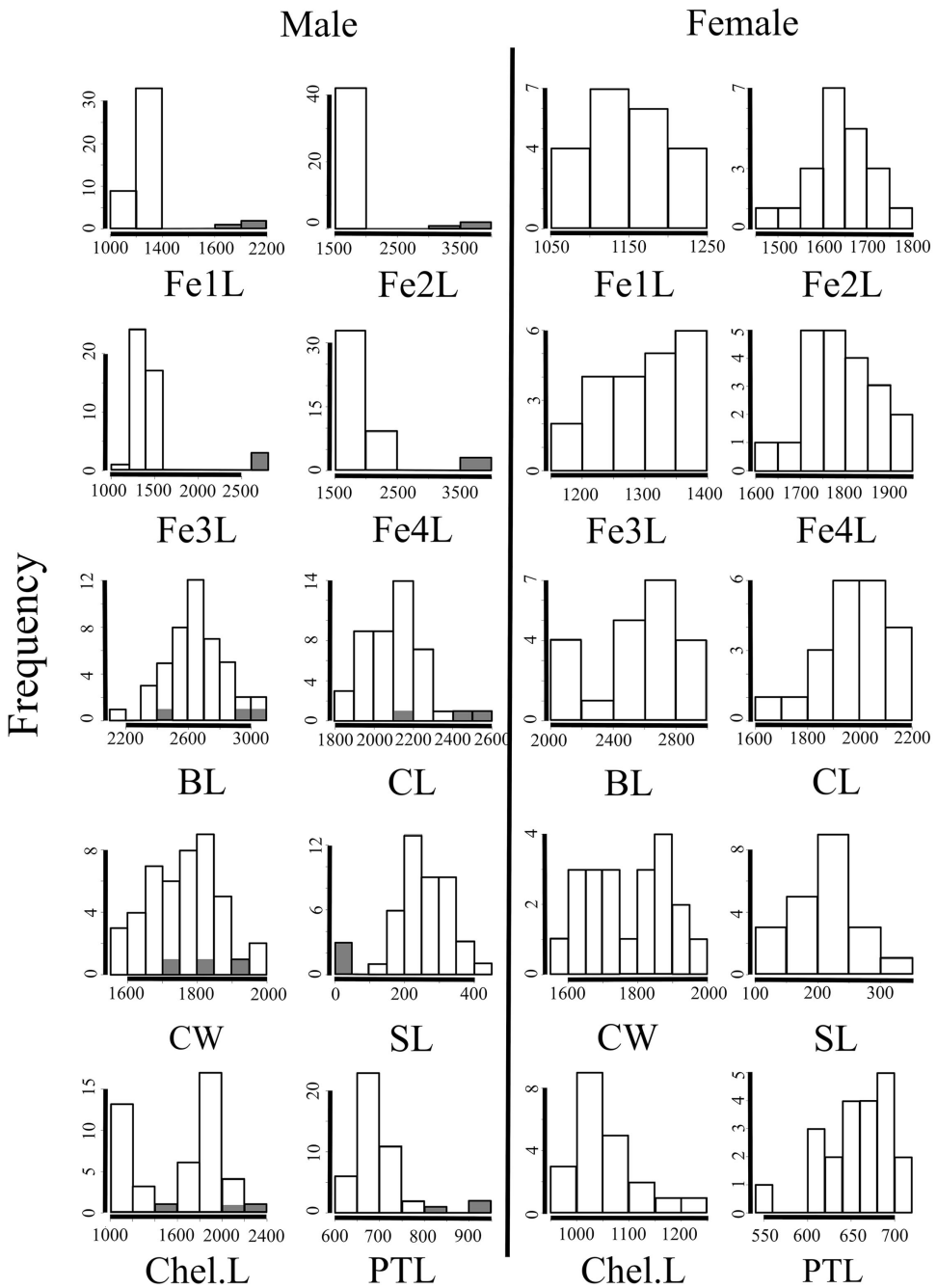


Fig. 11. Histograms of the morphological characteristics of *Zepedanulus ishikawai* in Yonaguni Island. White and grey colours indicate clade I and clade II, respectively. Abbreviations: Fe1L, femur length, first leg; Fe2L, femur length, second leg; Fe3L, femur length, third leg; Fe4L, femur length, fourth leg; BL, body length; CL, carapace length; CW, carapace width; SL, spine length; Chel.L, chelicerae length; PTL, palpal-tarsus length.

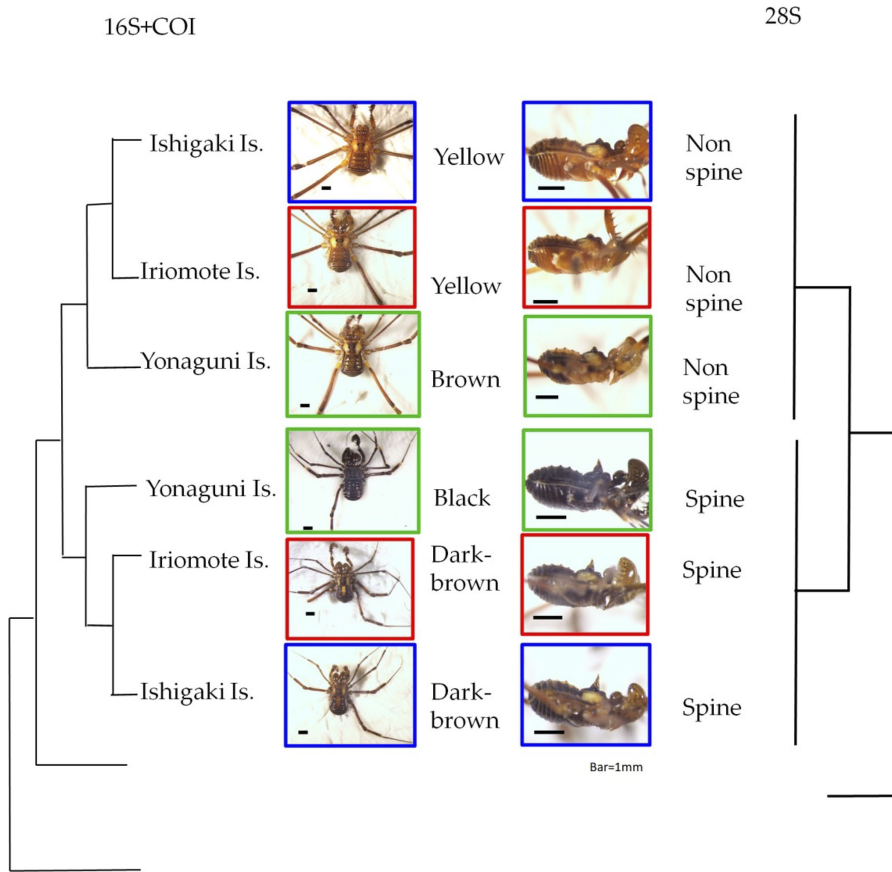


Fig. 12. Distribution of morphological characteristics in a simplified phylogenetic tree of *Zepedanulus ishikawai* and related species.

roughly contemporaneous with disconnection of the southern Ryukyus from continental East Asia (Koba 1992; Osozawa *et al.* 2012). The distance between the two islands could not prevent the movement of flying organisms, such as winged insects and birds, nor the spread of plants with long-distance dispersal abilities (Hatusima 1975; Ota 1998). However, the flightlessness and low vagility of *Z. ishikawai* could restrict its movement between Yonaguni and Taiwan Islands, and this species likely experienced the long-standing isolation of the southern Ryukyus from the surrounding islands. The deep genetic divergences we observed within the *Z. ishikawai* species complex suggest that the geological history of the Ryukyus played key roles in driving geographic isolation of populations since their divergence from their common ancestor in the archipelago.

The endemism of *Z. ishikawai* in the southern Ryukyus is supported by the historical isolation of the area from surrounding regions. However, our phylogenetic results indicated that *Z. ishikawai* comprises two groups and three subgroups; the former are considered different species, and the latter are considered differentiation among islands. Based on the geographic history of the area and the divergence time, we considered the following hypotheses for the formation of the current distribution of *Z. ishikawai*: (1) single colonisation by a common ancestor and speciation into clades I and II and (2) independent colonisation of two differentiated ancestors. The former hypothesis seems unlikely, based on the estimated divergence time of clade I and clade II of > 20 million years ago (Fig. 8), when the southern part of the Ryukyu Archipelago

was connected to Taiwan and the eastern margin of continental East Asia (Koba 1992; Osozawa *et al.* 2012). In this geographical setting, speciation within the limited prospective area of the southern part of Ryukyu archipelago was unlikely even with the limited dispersal ability of harvestmen, thereby supporting the latter hypothesis. The ancient divergence between clade I and clade II suggests that each clade of *Z. ishikawai* had accumulated variations independently, leading to considerable morphological differentiation. We estimate that the colonising ancestors of both *Z. ishikawai* clades originated from continental Southeast Asia, because the genus *Zepedanulus* is also recorded in, for instance, northern Thailand and Malacca (Roewer 1927; Suzuki 1981). However, it is unclear whether the ancestors of *Z. ishikawai* colonised the Ryukyu Archipelago region via Taiwan or invaded the archipelago directly from continental Asia. Systematic studies and phylogenetic analyses using a range of Epedanidae species are required to assess the history of diversification of *Z. ishikawai* and related species.

Our phylogenetic results suggest that *Z. ishikawai* did not frequently colonise islands in the southern part of the Ryukyu Archipelago after divergence of the two clades, because all monophyletic subgroups within each clade of this species comprised samples from an island, and individuals from the same island did not show paraphyletic or polyphyletic assemblies. Therefore, each subgroup of *Z. ishikawai* has an independent history of differentiation on each island, without additional introductions from other islands. Indeed, geographical variations among islands are also seen in other organisms in the Ryukyu Archipelago (Maki *et al.* 2003; Kiyoshi 2008; Osozawa *et al.* 2013, 2015; Hosokawa *et al.* 2014; Osozawa *et al.* 2015). In the case of harvestmen, Kumekawa *et al.* (2015) reported that *K. insulanus* in the central part of the Ryukyu Archipelago exhibited genetic differentiation between Amami-Oshima and Okinawa Islands based on the sequence of the *COI* in mitochondrial DNA. Although we detected morphological differences between clades of *Z. ishikawai*, whether differentiation occurred among subgroups of each clade is unclear because few individuals were collected from each island. Further analyses using larger numbers of samples from the islands are needed to clarify the morphological differences within each clade of *Z. ishikawai*.

Acknowledgements. The authors thank Drs K. Ito, Y. Minamiya, and H. Hayakawa for discussion in this study, and C. Uemoto, Y. Ozaki, K. Yoshioka, Y. Kamakura, Y. Mori, Y. Nibuno, T. Miyashita, and F. Maekawa for their field and laboratory assistance. The authors also thank Drs. N. Tsurusaki and T. Suguro for providing samples. This study was partly supported by a Grant-in-Aid for Scientific Research from the Ministry of Education, Science and Culture of Japan.

References

- Arbogast, B.S. and Kenagy, G.J. 2001. Comparative phylogeography as an integrative approach to historical biogeography. *Journal of Biogeography*, **28**: 819–825. <https://doi.org/10.1046/j.1365-2699.2001.00594.x>.
- Atkins, H., Presto, J., and Cronk, Q.C.B. 2001. A molecular text of Huxley's line: *Cyrtandra* (Gesneriaceae) in Borneo and the Philippines. *Biological Journal of the Linnean Society*, **72**: 143–159. <https://doi.org/10.1006/bijl.2000.0500>.
- Avise J.C., Shapiro, J.F., Daniel, S.W., Aquadro, C.F., and Lansman, R.A. 1983. Mitochondrial DNA differentiation during the speciation process in *Peromyscus*. *Molecular Biology and Evolution*, **1**: 38–56. doi: 10.1093/oxfordjournals.molbev.a040301 <https://doi.org/10.1093/oxfordjournals.molbev.a040301>.
- Avise, J.C. 2000. *Phylogeography: the history and formation of species*. Harvard University Press, Cambridge, Massachusetts, United States of America.
- Avise, J.C. 2009. *Phylogeography: retrospect and prospect*. *Journal of Biogeography*, **36**: 3–15. <https://doi.org/10.1111/j.1365-2699.2008.02032.x>.

- Babcock, C.S., Heraty, J.M., De Barro, P.J., Driver, F., and Schmidt, S. 2001. Preliminary phylogeny of *Encarsia* Förster (Hymenoptera: Aphelinidae) based on morphology and 28S rDNA. *Molecular Phylogenetics and Evolution*, **18**: 306–323. <https://doi.org/10.1006/mpev.2000.0875>.
- Bittkau, C. and Comes, H.P. 2005. Evolutionary processes in a continental island system: molecular phylogeography of the Aegean *Nigella arvensis* alliance (Ranunculaceae) inferred from chloroplast DNA. *Molecular Ecology*, **14**: 4065–4083. <https://doi.org/10.1111/j.1365-294X.2005.02725.x>.
- Bolnick, D.I. and Fitzpatrick, B.M. 2007. Sympatric speciation: models and empirical evidence. *Annual Review of Ecology, Evolution and Systematics*, **38**: 459–487.
- Bouckaert, R., Vaughan, T.G., Barido-Sottani, J., Duchêne, S., Fourment, M., and Gavryushkina, A. 2019. BEAST 2.5: an advanced software platform for Bayesian evolutionary analysis. *PLOS Computational Biology*, **15**: e1006650.
- Burns, M., Hedin, M., and Shultz, J.W. 2012. Molecular phylogeny of the leiobunine harvestmen of eastern North America (Opiliones: Sclerosomatidae: Leiobuninae). *Molecular Phylogenetics and Evolution*, **63**: 291–298. <https://doi.org/10.1016/j.ympev.2011.12.025>.
- Che, Y., Wang, D., Shi, Y., Du, X., Zhao, Y., Lo, N., and Wang, Z. 2016. A global molecular phylogeny and timescale of evolution for *Cryptocercus woodroaches*. *Molecular Phylogenetics and Evolution*, **98**: 201–209. <https://doi.org/10.1016/j.ympev.2016.02.005>.
- Chiang, T.Y. and Schaal, B.A. 2006. Phylogeography of plants in Taiwan and the Ryukyu Archipelago. *Taxon*, **55**: 31–41. <https://doi.org/10.2307/25065526>.
- Clouse, R.M. and Wheeler, W.C. 2014. Descriptions of two new, cryptic species of *Metasiro* (Arachnida: Opiliones: Cyphophthalmi: Neogoveidae) from South Carolina, USA, including a discussion of mitochondrial mutation rates. *Zootaxa*, **3814**: 177–201. <http://dx.doi.org/10.11646/zootaxa.3814.2.2>.
- Coyne, J.A. and Orr, H.A. 2004. *Speciation*. Sinauer Associates Inc., Sunderland, Massachusetts, United States of America.
- Cronn, R. and Wendel, J.F. 2004. Cryptic trysts, genomic mergers, and plant speciation. *New Phytologist*, **161**: 133–142. <https://doi.org/10.1111/j.1469-8137.2004.00947.x>.
- Cruz-López, J.A., Monjaraz-Ruedas, R., and Francke, O.F. 2019. Turning to the dark side: evolutionary history and molecular species delimitation of a troglomorphic lineage of armoured harvestman (Opiliones: Stygnopsidae). *Arthropod Systematics and Phylogeny*, **77**: 285–302. <https://doi.org/10.26049/ASP77-2-2019-06>.
- Derkarabetian, S., Ledford, J., and Hedin, M. 2011. Genetic diversification without obvious genitalic morphological divergence in harvestmen (Opiliones, Laniatores, *Sclerobunus robustus*) from montane sky islands of western North America. *Molecular Phylogenetics and Evolution*, **63**: 844–853. <https://doi.org/10.1016/j.ympev.2011.08.004>.
- Derkarabetian, S., Steinmann, D.B., and Hedin, M. 2010. Repeated and time-correlated morphological convergence in cave-dwelling harvestmen (Opiliones, Laniatores) from Montane Western North America. *PLOS One*, **5**: e10388. <https://doi.org/10.1371/journal.pone.0010388>.
- Didemico, A. and Hedin, M. 2016. New species in the *Sitalcina sura* species group (Opiliones, Laniatores, Phalangodidae), with evidence for a biogeographic link between California desert canyons and Arizona sky islands. *Zookeys*, **586**: 1–36. <https://doi.org/10.3897/zookeys.586.7832>.
- Dobzhansky, T. 1937. *Genetic and the origin of species*. Columbia University Press, New York, New York, United States of America.
- Emata, K.N. and Hedin, M. 2016. From the mountains to the coast and back again: ancient biogeography in a radiation of short-range endemic harvestmen from California. *Molecular Phylogenetics and Evolution*, **98**: 233–243. <https://doi.org/10.1016/j.ympev.2016.02.002>.
- Friedrich, M. and Tautz, D. 1997. Evolution and phylogeny of the Diptera: a molecular phylogenetic analysis using 28S rDNA sequences. *Systematic Biology*, **46**: 674–698. <https://doi.org/10.2307/2413500>.

- Fukuda, T., Song, I.J., Ito, T., Hayakawa, H., Minamiya, Y., Kanno, A., Hayakawa, H., Minamiya, Y., and Yokoyama, J. 2011. Phylogeography of *Asparagus schoberioides* Kunth (Asparagaceae) in Japan. *American Journal of Plant Science*, **2**: 781–789. <https://doi.org/10.4236/ajps.2011.26093>.
- Fukuda, T., Yokoyama, J., and Ohashi, H. 2001. Phylogeny and biogeography in *Lycium* (Solanaceae): inferences from chloroplast DNA sequences. *Molecular Phylogenetics and Evolution*, **19**: 246–258. <https://doi.org/10.1006/mpev.2001.0921>.
- Giribet, G., Rambla, M., Carranza, S., Baguna, J., Riutort, M., and Ribera, C. 1999. Phylogeny of the arachnid order Opiliones (Arthropoda) inferred from a combined approach of complete 18S and partial 28S ribosomal DNA sequences and morphology. *Molecular Phylogenetics and Evolution*, **11**: 296–307. <https://doi.org/10.1006/mpev.1998.0583>.
- Giribet, G., Vogt, L., Perez, G.A., Sharma, P., and Kury, A. 2010. A multilocus approach to harvestman (Arachnida: Opiliones) phylogeny with emphasis on biogeography and the systematics of Laniatores. *Cladistics*, **26**: 408–437. <https://doi.org/10.1111/j.1096-0031.2009.00296.x>.
- Gómez-Zurita, J., Juan, C., and Petitpierre, E. 2000. The evolutionary history of the genus *Timarcha* (Coleoptera, Chrysomelidae) inferred from mitochondrial *COI* gene and partial 16S rDNA sequences. *Molecular Phylogenetics and Evolution*, **14**: 304–317. <https://doi.org/10.1006/mpev.1999.0712>.
- Griffin, S.R. and Barrett, S.C.H. 2004. Post-glacial history of *Trillium grandiflorum* (Melanthiaceae) in eastern North America: inferences from phylogeography. *American Journal of Botany*, **91**: 465–473. <https://doi.org/10.3732/ajb.91.3.465>.
- Hansen, T.A. 1983. Modes of larval development and rates of speciation in early Tertiary neogastropods. *Science*, **220**: 501–502. <https://doi.org/10.1126/science.220.4596.501>.
- Hatusima, S. 1975. Flora of the Ryukyus, added and corrected. Okinawan Association of Biology Education, Naha, Japan. [Japanese].
- Hebert, P.D., Cywinska, A., Ball, S.L., and deWaard, J.R. 2003. Biological identifications through DNA barcodes. *Proceedings of the Royal Society of London. Series B, Biological Sciences*, **270**: 313–321. <https://doi.org/10.1098/rspb.2002.2218>.
- Hedges, S.B., Hass, C.A., and Maxon, L.R. 1992. Caribbean biogeography: molecular evidence for dispersal in West Indian terrestrial vertebrates. *Proceedings of the National Academy of Sciences*, **89**: 1909–1913. <https://doi.org/10.1073/pnas.89.5.1909>.
- Hedin, M. and Thomas, S.M. 2010. Molecular systematics of eastern North American Phalangodidae (Arachnida: Opiliones: Laniatores), demonstrating convergent morphological evolution in caves. *Molecular Phylogenetics and Evolution*, **54**: 107–121. <https://doi.org/10.1016/j.ympev.2009.08.020>.
- Hewitt, G.M. 2004. Genetic consequences of climatic oscillations in the Quaternary. *Philosophical Transactions of the Royal Society of London. Series B, Biological Sciences*, **359**: 183–195. <https://doi.org/10.1098/rstb.2003.1388>.
- Hirst, A.S. 1911. On some new Opiliones from Japan and the Loo-Choo Islands. *Annals and Magazine of Natural History*, **8**: 625–636.
- Hisheh, S., Westerma, M., and Schmitt L.H. 1998. Biogeography of the Indonesian archipelago: mitochondrial DNA variation in the fruit bat, *Eonycteris spelaea*. *Biological Journal of the Linnean Society*, **65**: 329–345. <https://doi.org/10.1006/bijl.1998.0244>.
- Hollingsworth, M.L., Bailey, J.P., Hollingsworth, P.M., and Ferris, C. 1999. Chloroplast DNA variation and hybridisation between invasive populations of Japanese knotweed and giant knotweed (*Fallopia*, Polygonaceae). *Botanical Journal of the Linnean Society*, **129**: 139–154.
- Hosokawa, T., Nikoh, N., and Fukatsu, T. 2014. Fine-scale geographical origin of an insect pest invading North America. *PLOS One*, **9**: e89107. <https://doi.org/10.1371/journal.pone.0089107>.
- Ikeda, H., Nishikawa, M., and Sota, T. 2011. Loss of flight promote beetle diversification. *Nature Communications*, **3**: 648. <https://doi.org/10.1038/ncomms1659>.

- Jablonski, D. 1986. Larval ecology and macroevolution in marine invertebrates. *Bulletin of Marine Science*, **39**: 565–587.
- Jinbo, U., Kato, T., and Ito, M. 2011. Current progress in DNA barcoding and future implications for entomology. *Entomological Science*, **14**: 107–124. <https://doi.org/10.1111/j.1479-8298.2011.00449.x>.
- Kaito, T. and Toda, M. 2016. The biogeographical history of Asian keelback snakes of the genus *Hebius* (Squamata: Colubridae: Natricinae) in the Ryukyu Archipelago, Japan. *Biological Journal of the Linnean Society*, **118**: 187–199. <https://doi.org/10.1111/bij.12726>.
- Kawana, T. 2002. Neotectonics in the Ryukyu Arc. *In* Establishment of the Ryukyu Arc and colonization of biota. *Edited by* M. Kimura. Okinawa Times, Naha, Okinawa, Japan. Pp. 59–83. [Japanese].
- Keally, C.T. 2005. Japanese Pleistocene landbridges and the earliest watercraft [online]. Available from <http://www.t-net.ne.jp/~keally/MiddlePalaeol/landbridges.html> [accessed 15 June 2019].
- Kimura, M. 1996. Quaternary paleogeography of the Ryukyu Arc. *Journal of Geography*, **105**: 259–285. [Japanese]. https://doi.org/10.5026/jgeography.105.3_259.
- Kimura, M. 2000. Paleogeography of the Ryukyu Islands. *Tropics*, **10**: 5–24. <https://doi.org/10.3759/tropics.10.5>.
- Kimura, M. 2002. Formation and paleogeography of the Ryukyu Arc. *In* Establishment of the Ryukyu Arc and colonization of biota. *Edited by* M. Kimura. Okinawa Times, Naha, Japan. Pp. 19–54. [Japanese].
- Kiyoshi, T. 2008. Differentiation of golden-ringed dragonfly *Anotogaster sieboldii* (Selys, 1854) (Cordulegastridae: Odonata) in the insular east Asia revealed by the mitochondrial gene genealogy with taxonomic implications. *Journal of Zoological Systematics and Evolutionary Research*, **46**: 105–109. <https://doi.org/10.1111/j.1439-0469.2007.00445.x>.
- Kizaki, K. and Oshiro, I. 1977. Palaeogeography of the Ryukyu Islands. *Marine Science Monthly*, **9**: 542–549. [In Japanese with English summary].
- Kizaki, K. and Oshiro, I. 1980. The origin of the Ryukyu Islands. *In* Natural history of the Ryukyus. *Edited by* K. Kizaki. Tsukiji-shokan, Tokyo, Japan [Japanese].
- Koba, M. 1992. Influx of Kuroshio current into the Okinawa trough and inauguration of Quaternary coral-reef building in the Ryukyu Island Arc, Japan. *Quaternary Research*, **31**: 359–373. <https://doi.org/10.4116/jaqua.31.359>.
- Kumekawa, Y., Ito, K., Miura, O., Yokoyama, J., Tebayashi, S., Arakawa, R., and Fukuda, T. 2015. Molecular phylogeny of *Kilungius insulanus* (Arachnida: Opiliones: Epedanidae) in Amami-Oshima Island and Okinawa Island. *Edaphologia*, **96**: 1–7. https://doi.org/10.20695/edaphologia.96.0_1.
- Kumekawa, Y., Ito, K., Tsurusaki, N., Hayakawa, H., Ohga, K., Yokoyama, J., *et al.* 2014. Morphological and molecular analyses of *Pseudobiantes japonicus* Hirst, 1911 and its allied species. *Annals of the Entomological Society of America*, **107**: 756–772.
- Kumekawa, Y., Miura, O., Fujimoto, H., Ito, K., Arakawa, R., Yokoyama, J., and Fukuda, T. 2019. Possible occurrence of reproductive isolation between two geographical clades of a laniatorid harvestman *Pseudobiantes japonicus* (Arachnida: Opiliones: Epedanidae) in Shikoku. *Edaphologia*, **104**: 19–24.
- Kumekawa, Y., Murjoko, A., Hayakawa, H., Ohga, K., Mori, M., Miyazaki, A., *et al.* 2013. Molecular analyses of folk varieties of the sago palm (*Metroxylon sagu* Rottb) using the internal transcribed spacer (ITS) region and nuclear microsatellite DNA. *Sago Palm*, **21**: 14–19.
- Maddison, W.P. and Knowles, L.L. 2006. Inferring phylogeny despite incomplete lineage sorting. *Systematic Biology*, **55**: 21–30. <https://doi.org/10.1080/10635150500354928>.
- Maekawa, K., Lo, N., Kitade, O., Miura, T., and Matsumoto, T. 1999. Molecular phylogeny and geographic distribution of wood-feeding cockroaches in East Asian islands. *Molecular Phylogenetics and Evolution*, **13**: 360–376. <https://doi.org/10.1006/mpev.1999.0647>.

- Maki, M., Yamashiro, T., and Matsumura, S. 2003. High levels of genetic diversity in island populations of the island endemic *Suzukia luchuensis* (Labiatae). *Heredity*, **91**: 300–306. <https://doi.org/10.1038/sj.hdy.6800311>.
- Mallatt, J. and Sullivan, J. 1998. 28S and 18S rDNA sequences support the monophyly of lampreys and hagfishes. *Molecular Biology and Evolution*, **15**: 1706–1718.
- Matsumura, S., Yokoyama, J., Fukuda, T., and Maki, M. 2009. Intraspecific differentiation of *Limonium wrightii* (Plumbaginaceae) on northwestern Pacific Islands: rate heterogeneity in nuclear rDNA and its distance-independent geographic structure. *Molecular Phylogenetics and Evolution*, **53**: 1032–1036. <https://doi.org/10.1016/j.ympev.2009.06.011>.
- Maura, M., Salvi, D., Bologna, M.A., Nascetti, G., and Canestrelli, D. 2014. Northern richness and cryptic refugia: phylogeography of the Italian smooth newt *Lissotriton vulgaris meridionalis*. *Biological Journal of the Linnean Society*, **113**: 590–603. <https://doi.org/10.1111/bij.12360>.
- Mayr, E. 1963. *Animal Species and Evolution*. Harvard University Press, Cambridge, Massachusetts, United States of America.
- Mezzasalma, M., Dall'Asta, A., Loy, A., Cheylan, M., Lymberakis, P., Zuffi, M.A.L., *et al.* 2015. A sister's story: comparative phylogeography and taxonomy of *Hierophis viridiflavus* and *H. gemonensis* (Serpentes, Colubridae). *Zoologica Scripta*, **44**: 495–508. <https://doi.org/10.1111/zsc.12115>.
- Minamiya, Y., Yokoyama, J., and Fukuda, T. 2009. A phylogeographic study of the Japanese earthworm, *Metaphire sieboldi* (Horst, 1883) (Oligochaeta: Megascolecidae): inferences from mitochondrial DNA sequences. *European Journal of Soil Biology*, **45**: 423–430. <https://doi.org/10.1016/j.ejsobi.2009.06.004>.
- Miura, O., Turchin, M.E., Bermingham, E., Jacobs, D.K., and Hechinger, R.F. 2012. Flying shells: historical dispersal of marine snails across Central America. *Proceedings of the Royal Society B: Biological Sciences*, **279**: 1061–1067. <https://doi.org/10.1098/rspb.2011.1599>.
- Mráz, P., Chrtěk, J., Fehrer, J., and Plačková, I. 2005. Rare recent natural hybridisation in *Hieracium s. str.*: evidence from morphology, allozymes, and chloroplast DNA. *Plant Systematics and Evolution*, **255**: 177–192.
- Nakamura, K., Denda, T., Kokubugata, G., Huang, C., Peng, C.I., and Yokota, M. 2015. Phylogeny and biogeography of the *Viola iwagawae-tashiroi* species complex (Violaceae, section *Plagiostigma*) endemic to the Ryukyu archipelago. *Plant Systematics and Evolution*, **301**: 337–351. <https://doi.org/10.1007/s00606-014-1076-y>.
- Nei, M. and Kumar, S. 2000. *Molecular Evolution and Phylogenetics*. Oxford University Press, New York, United States of America.
- Nijman, I.J., Bradley, D.G., Hanotte, O., Otsen, M., and Lenstra, J.A. 1999. Satellite DNA polymorphisms and AFLP correlate with *Bos indicus-taurus* hybridization. *Animal Genetics*, **30**: 265–273.
- Nunn, G.B., Theisen, B.F., Christensen, B., and Arctander, P. 1996. Simplicity-correlated size growth of the nuclear 28S ribosomal RNA D3 expansion segment in the crustacean order Isopoda. *Journal of Molecular Evolution*, **42**: 211–223. <https://doi.org/10.1007/BF02198847>.
- Nylander, J.A.A. 2004. MrModeltest 2.3: programme distributed by the author. Evolutionary Biology Centre, Uppsala University, Uppsala, Sweden.
- Ohdachi, S., Dokuchaev, N.E., Hasegawa, M., and Masuda, R., 2001. Intraspecific phylogeny and geographical variation of six species of northeastern Asiatic *Sorex shrews* based on the mitochondrial cytochrome b sequences. *Molecular Ecology*, **10**: 2199–2213. <https://doi.org/10.1046/j.1365-294X.2001.01359.x>.
- Ohshiro, I. 2003. Geology and paleontology of Ryukyu Islands. *In* The flora and fauna of inland waters in the Ryukyu islands. *Edited by* S. Nishijima, M. Nishida, N. Shikatani, and S. Shokita. Tokai University Press, Hiratsuka, Kanagawa, Japan. Pp. 11–16. [Japanese].

- Oleksa, A., Chybicki, I., Tofilski, A., and Burczyk, J. 2011. Nuclear and mitochondrial patterns of introgression into native dark bees (*Apis mellifera mellifera*) in Poland. *Journal of Apicultural Research*, **50**: 116–129.
- Osozawa, S., Pavlis, T., and Flower, M. 2011. Sedimentary block-in-matrix fabric affected by tectonic shear, Miocene Nabae complex, Japan. *In* *Melanges: processes of formation and societal significance*. Edited by J. Wakabayashi and Y. Dilek. Special Paper of Geological Society of America, **480**:189–206. [https://doi.org/10.1130/2011.2480\(08\)](https://doi.org/10.1130/2011.2480(08)).
- Osozawa, S., Shinjo, R., Armid, A., Watanabe, Y., Horiguchi, T., and Wakabayashi, J. 2012. Palaeogeographic reconstruction of the 1.55 Ma synchronous isolation of the Ryukyu Islands, Japan and Taiwan and inflow of the Kuroshio warm current. *International Geology Review*, **54**: 1369–1388. <https://doi.org/10.1080/00206814.2011.639954>.
- Osozawa, S., Su, Z.H., Oba, Y., Yagi, T., Watanabe, Y., and Wakabayashi, J. 2013. Vicariant speciation due to 1.55 Ma isolation of the Ryukyu islands, Japan, based on geological and GenBank data. *Entomological Science*, **16**:267–277. <https://doi.org/10.1111/ens.12037>.
- Osozawa, S., Takáhashi, M., and Wakabayashi, J. 2015. Ryukyu endemic *Mycalesis* butterflies, speciated vicariantly due to isolation of the islands since 1.55 Ma. *Lepidoptera Science*, **66**: 8–14. https://doi.org/10.18984/lepid.66.1_8.
- Ota, H. 1998. Geographic patterns of endemism and speciation in amphibians and reptiles of the Ryukyu Archipelago, Japan, with special reference to their paleogeographical implications. *Researches on Population Ecology*, **40**: 189–204. <https://doi.org/10.1007/BF02763404>.
- Ota, H. 2012. Phylogeography of terrestrial biota and geohistory of the Ryukyu Archipelago, Japan: hypothetical scenarios hitherto proposed and directions of future studies. *Chikyu Monthly*, **34**: 427–436.
- Percy, D.M., Page, R.D., and Cronk, Q.C. 2004. Plant–insect interactions: double-dating associated insect and plant lineages reveals asynchronous radiations. *Systematic Biology*, **53**: 120–127. <https://doi.org/10.1080/10635150490264996>.
- Pons, J. and Vogler, A.P. 2005. Complex pattern of coalescence and fast evolution of a mitochondrial rRNA pseudogene in a recent radiation of tiger beetles. *Molecular Biology and Evolution*, **22**: 991–1000. <https://doi.org/10.1093/molbev/msi085>.
- Poulakakis, N., Lymberakis, P., Antonioub, A., Chalkia, D., Zourosb, E., Mylonasa, M., and Valakos, E. 2003. Molecular phylogeny and biogeography of the wall-lizard *Podarcis erhardii* (Squamata: Lacertidae). *Molecular Phylogenetics and Evolution*, **28**: 38–46.
- Rambaut, A. 2014. FIGTREE. Version 1.4.2 [online]. Available from <http://tree.bio.ed.ac.uk/software/figtree/> [accessed 25 June 2018].
- Rambaut, A., Suchard, M.A., Xie, D., and Drummond, A.J. 2014. Tracer v1.6 [online]. Available from <http://beast.bio.ed.ac.uk/Tracer> [accessed 25 June 2018].
- Rieseberg, L.H. and Soltis, D.E. 1991. Phylogenetic consequences of cytoplasmic gene flow in plants. *Evolutionary Trends in Plants*, **5**: 65–84.
- Roewer, C.F. 1927. Weitere Weberknechte I. (1. Ergänzung der : “Weberknechte der Erde”, 1923) *Abhandlungen der Naturwissenschaftlichen Verein zu Bremen, Bremen* **26**: 261–402.
- Ronquist, F. and Huelsenbeck, J.P. 2003. MrBayes 3: Bayesian phylogenetic inference under mixed models. *Bioinformatics*, **19**: 1572–1574. <https://doi.org/10.1093/bioinformatics/btg180>.
- Schlick-Steiner, B.C., Steiner, F.M., Seifert, B., Stauffer, C., Christian, E., and Crozier, T.H. 2010. Integrative taxonomy: a multisource approach to exploring biodiversity. *Annual Review of Entomology*, **55**: 421–438. <https://doi.org/10.1146/annurev-ento-112408-085432>.
- Schmidt, S., Driver, F., and De Barro, P. 2006. The phylogenetic characteristics of three different 28S rRNA gene regions in *Encarsia* (Insecta, Hymenoptera, Aphelinidae). *Organisms Diversity and Evolution*, **6**: 127–139. <https://doi.org/10.1016/j.ode.2005.07.002>.
- Seki, S., Sakanashi, M., Kawaji, N., and Kotaka, N. 2007. Phylogeography of the Ryukyu robin (*Erithacus komadori*): population subdivision in land-bridge islands in relation to the shift

- in migratory habit. *Molecular Ecology*, **16**: 101–113. <https://doi.org/10.1111/j.1365-294X.2006.03117.x>.
- Seo, A., Watabanabe, M., Hotta, M., and Murakami, N. 2004. Geographical patterns of allozyme variation in *Angelica japonica* (Umbelliferae) and *Farfugium japonicum* (Compositae) on the Ryukyu Islands, Japan. *Acta Phytotaxonomica et Geobotanica*, **55**: 29–44. <https://doi.org/10.18942/apg.KJ00004622802>.
- Sharma, P. and Giribet, G. 2009. Sandokanid phylogeny based on eight molecular markers: the evolution of a Southeast Asian endemic family of Laniatores (Arachnida, Opiliones). *Molecular Phylogenetics and Evolution*, **52**: 432–447. <https://doi.org/10.1016/j.ympev.2009.03.013>.
- Sharma, P.P. 2010. New Australasian Zalmoxidae (Opiliones: Laniatores) and a new case of male polymorphism in Opiliones. *Zootaxa*, **3236**: 1–35. <http://dx.doi.org/10.11646/zootaxa.3236.1.1>.
- Sharma, P.P. and Giribet, G. 2011. The evolutionary and biogeographic history of the armoured harvestmen: Laniatores phylogeny based on 10 molecular markers, with the description of two new families of Opiliones (Arachnida). *Invertebrate Systematics*, **25**: 106–142. <https://doi.org/10.1071/IS11002>.
- Sharma, P.P., Buenavente, P.A.C., Clouse, R.M., Diesmos, A.C., and Giribet, G. 2012. Forgotten gods: Zalmoxidae of the Philippines and Borneo (Opiliones: Laniatores). *Zootaxa*, **3280**: 29–55. <http://dx.doi.org/10.11646/zootaxa.3280.1.2>.
- Shinjo, R. 2015. The geology of Okinawa-Jima Island. *In Nature in the Ryukyu Archipelago: coral reefs, biodiversity, and the natural environment. Edited by K. Fujita, T. Arakaki, T. Denda, M. Hidaka, E. Hirose, and J.D. Reimer.* Faculty of Science, University of the Ryukyus, Nishimura, Okinawa, Japan. Pp. 12–119.
- Simsek, M., Tanira, M.O.M., Al-Baloushi, K.A., Al-Barwani, H.S., Lawatia, K.M., and Bayoumi, R.A.L. 2001. A precaution in the detection of heterozygotes by sequencing: comparison of automated DNA sequencing and PCR–restriction fragment length polymorphism methods. *Clinical Chemistry*, **47**: 134–137. <https://doi.org/10.1093/clinchem/47.1.134>.
- Smith, C.I. and Farrell, B.D. 2006. Evolutionary consequences of dispersal ability in cactus-feeding insects. *Genetica*, **126**: 323–334. <https://doi.org/10.1007/s10709-005-0714-2>.
- Suzuki, S. 1971. Opiliones of the Ryukyus. *Journal of Science of the Hiroshima University, Series B, Division 1 (Zoology)*, **23**: 187–213.
- Suzuki, S. 1973. Opiliones from the south-west islands. *Journal of Science of the Hiroshima University, Series B, Division 1 (Zoology)*, **24**: 205–279.
- Suzuki, S. 1981. Three opilionids from Thailand. *Annotationes Zoologicae Japonenses*, **54**: 267–272.
- Swofford, D.L. 2002. PAUP 4.0b10: phylogenetic analysis using parsimony Sinauer Associates, Sunderland, Massachusetts, United States of America.
- Tamura, K., Stecher, G., Peterson, N., Filipski, A., and Kumar, S. 2013. MEGA6: molecular evolutionary genetics analysis, version 6.0. *Molecular Biology and Evolution*, **30**: 2725–2729. <https://doi.org/10.1093/molbev/mst197>.
- Taylor, M.L. and Rogers, A.D. 2015. Evolutionary dynamics of a common sub-Antarctic octocoral family. *Molecular Phylogenetics and Evolution*, **84**: 185–204. <https://doi.org/10.1016/j.ympev.2014.11.008>.
- Thomas, S.M. and Hedin, M. 2008. Multigenic phylogeographic divergence in the paleoendemic southern Appalachian opilionid *Fumontana deprehendor* Shear (Opiliones, Laniatores, Triaenonychidae). *Molecular Biology and Evolution*, **46**: 645–658. <https://doi.org/10.1016/j.ympev.2007.10.013>.
- Thompson, J.D., Higgins, D.G., and Gibson, T.J. 1994. CLUSTAL W: improving the sensitivity of progressive multiple sequence alignment through sequence weighting, positions-specific gap penalties and weight matrix choice. *Nucleic Acids Research*, **22**: 4673–4680. <https://doi.org/10.1093/nar/22.22.4673>.

- Toews, D.P.L. and Brelsford, A. 2012. The biogeography of mitochondrial and nuclear discordance in animals. *Molecular Ecology*, **21**: 3907–3930. <https://doi.org/10.1111/j.1365-294X.2012.05664.x>.
- Tsurusaki, N. 2006a. Geographic variation of chromosome and somatic morphology in the Japanese polymorphic species *Leiobunum hiraiwai* (Arachnida: Opiliones: Sclerosomatidae). *Zootaxa*, **1325**: 157–190. <http://dx.doi.org/10.11646/zootaxa.1325.1.10>.
- Tsurusaki, N. 2006b. Biogeography of Opiliones in the Ryukyu Islands. *Nature and Insects*, **41**: 30–33.
- Tsurusaki, N. and Suzuki, S. 2015. Pictorial keys to soil animals of Japan. Second edition. *Edited by J. Aoki*. Tokai University Press, Hadano, Japan. Pp. 121–145. [Japanese].
- Ujiie, H. 1990. Geological history of the Ryukyu Island Arc. *In Nature of Okinawa geomorphology and geology. Edited by H. Ujiie*. Hirugisha, Naha, Okinawa, Japan. Pp. 251–255. [Japanese].
- Vaini, J.O., Grisolia, A.B., Prado, F.D., and Porto-Foresti, F. 2014. Genetic identification of interspecific hybrid of Neotropical catfish species (*Pseudoplatystoma corruscans* vs. *Pseudoplatystoma reticulatum*) in rivers of Mato Grosso do Sul State Brazil. *Neotropical Ichthyology*, **12**: 635–641.
- Velo-Antón, G., Zamudio, K.R., and Cordero-Rivera, A. 2012. Genetic drift and rapid evolution of viviparity in insular fire salamanders (*Salamandra salamandra*). *Heredity*, **108**: 410–418. <https://doi.org/10.1038/hdy.2011.91>.
- Vink, C.J., Thomas, S.M., Paquin, P., Hayashi, C.Y., and Hedin, M. 2005. The effects of preservatives and temperatures on arachnid DNA. *Invertebrate Systematics*, **19**: 99–104. <https://doi.org/10.1071/IS04039>.
- Wendel, J.F. and Doyle, J.J. 1998. Phylogenetic incongruence: windows into genome history and molecular evolution. *In Molecular systematics of plants II DNA sequencing. Edited by D.E. Soltis, P.S. Soltis, and J.J. Doyle*. Kluwer, Dordrecht, The Netherlands. Pp. 265–296. https://doi.org/10.1007/978-1-4615-5419-6_10.
- Xiong, B. and Kocher, T.D. 1991. Comparison of mitochondrial DNA sequences of seven morphospecies of black flies (Diptera: Simuliidae). *Genome*, **34**: 306–311. <https://doi.org/10.1139/g91-050>.
- Zera, A.J. 1981. Genetic structure of two species of waterstriders (Gerridae: Hemiptera) with differing degrees of winglessness. *Evolution*, **35**: 218–225. <https://doi.org/10.2307/2407832>.

Cite this article: Kumekawa, Y., Fujimoto, H., Miura, O., Arakawa, R., Yokoyama, J., and Fukuda, T. 2021. Morphological and molecular phylogenetic analyses of *Zepedanulus ishikawai* (Arachnida: Opiliones: Laniatores: Epedanidae) in the southern part of the Ryukyu Archipelago. *The Canadian Entomologist*, **153**: 800–827. <https://doi.org/10.4039/tce.2021.42>.