

CAMBRIDGE

New in Entomology from Cambridge University Press

Forthcoming...

**Medical Entomology
for Students**
Fifth Edition

Mike Service

\$55.00: Pb: 978-1-107-66818-8: 300 pp.

Bees and Wasps

Oswald H. Latter

\$19.99: Pb: 978-1-107-60574-9: 144 pp.

The Flea

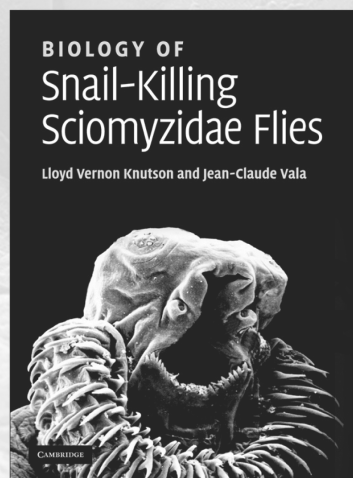
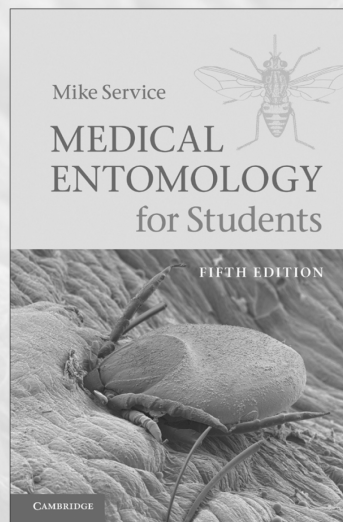
Harold Russell

\$19.99: Pb: 978-1-107-60583-1: 144 pp.

**Biology of Snail-Killing
Sciomyzidae Flies**

Lloyd Vernon Knutson *and*
Jean-Claude Vala

\$150.00: Hb: 978-0-521-86785-6: 526 pp.



Prices subject to change.

www.cambridge.org/us/lifesciences
800.872.7423



CAMBRIDGE
UNIVERSITY PRESS

NOTES FOR AUTHORS

Please see the complete version ("Instructions for Contributors") at journals.cambridge.org/ber

Styles of Paper

Bulletin of Entomological Research publishes two types of paper:

- Full research papers
- Reviews

If the referees and editors judge a paper to be particularly significant then it will be fast-tracked for publication.

We also welcome 'Letters to the Editor' with comments on recently published papers.

Manuscript Preparation

Language

Manuscripts should be in English.

Manuscript content

Manuscripts should be prepared in Microsoft Word or similar according to the following structure:

- The text, divided under appropriate headings. Clearly differentiate between primary (bold, large font size), secondary (bold, text font size) and tertiary (italics) headings
- Acknowledgements (if any)
- References (for further information about presenting references please see below)
- Tables, either at the end of the manuscript or as separate files. Tables should be numbered consecutively with Arabic numerals and every table should be mentioned at least once in the text.
- Illustrations should be submitted as separate files in TIF or EPS format but captions should be listed at the end of the manuscript text.

Abstract

Each paper must commence with an accurate, informative abstract. It should not exceed 250 words. A short title should also be provided for use as a running head.

References

References must be based on the name and year system, give full journal titles and conform to the following styles:

- Follett, P.A. & Roderick, G.K.** (1996) Genetic estimates of dispersal ability in the leucaena psyllid predator *Curinus coeruleus* (Coleoptera: Coccinellidae): implications for biological control. *Bulletin of Entomological Research* **86**, 355–361.
- Nevill, E.M., Kappmeier, K. & Venter, G.J.** (1993) Tsetse fly research in Zululand. p. 81 in *Proceedings of the ninth Entomological Congress organized by the Entomological Society of Southern Africa, Johannesburg, 28 June–1 July 1993* Pretoria, Entomological Society of South Africa.
- Wilson, M.D. & Post, R.J.** (1994) Integration of morphometric, cytogenetic and molecular techniques: a case study of *Simulium damnosum* pp. 215–224 in *Hawksworth, D.L. (Ed.) The identification and characterization of pest organisms*. Wallingford, CAB International.

Please list papers by more than two authors, but with the same first author, by year sequence and alphabetically within each year. Citation of authors in the text should appear in the form: Polaszek (1996) or (Polaszek, 1996). Authors should be cited in chronological order as: (Blackman *et al.*, 1994; Roberts & Kumar, 1995).

Tables

Tables should be in a simple form and should not be used if text or illustrations give the same information. They can either be submitted as separate files (Microsoft Word or Excel) or embedded within the main manuscript file. Each table must have a clear and concise caption.

Illustrations

Illustrations should be submitted in TIF or EPS format at approximate final publication size. Resolution of artwork should

be at the following minimum resolutions: Line artwork (black & white), 1200dpi; Combination, i.e. line/tone (greyscale), 800dpi; Black & White halftone (greyscale), 300dpi; and Colour halftone, 300dpi. Comprehensive guidance on creating suitable electronic figures is available at http://dx.sheridan.com/guidelines/digital_art.html where you will find extensive guidelines on preparing electronic figures. An online preflighting tool (<http://dx.sheridan.com/index.html>) is also available where you can check if your figures are suitable for reproduction. Captions should be listed at the end of the manuscript text.

Supplementary Material

Additional information which due to its nature does not lend itself to print media (examples- full data sets, movie or sounds files etc...) may be submitted for online-only publication. Please see full details ("Instructions for Contributors") at journals.cambridge.org/ber.

Technical and Nomenclature Standards

All work should use SI units as standard. Anatomical terms can be a mixture of the English vernacular and Latin, depending on current usage.

Manuscript Preparation

We kindly ask that you follow the instructions below when preparing your manuscript for submission. This will minimize the risk of errors being introduced during the publishing process.

- Use double-line spacing and ample margins (at least 2.5cm) on each side.
- Do not underline anything
- Use line numbers
- Do not indent the start of each paragraph
- Use italics for taxonomic nomenclature and bold for headings
- Use standard abbreviations (e.g. Fig. and Figs) and SI units
- Use British rather than American Spellings and 'z' rather than 's' spellings in words with 'ize'.

Voucher specimens

The deposition of voucher specimens should be considered where appropriate.

Manuscript Submission

All manuscripts should be submitted via our on-line system, Editorial Manager, at <http://www.editorialmanager.com/ber>. New users will need to register first.

Peer review

Communications for peer review will be by email as far as possible. Authors are invited to suggest the names and contact details of at least two potential referees and are asked to provide keywords indicating the content of the manuscript. Please also give a brief description (no more than 50 words) of why the manuscript is an important contribution to entomology research.

Publication

Copyright

Authors will be supplied with an agreement to publish form, which must be completed and returned to the Publisher. Papers are accepted on the understanding that the work has been submitted exclusively to the *Bulletin* and has not been previously published elsewhere.

Proofs

Authors will receive a PDF file of page proofs by email, and will be asked to return corrected proofs within 72 hours.

Offprints

The author (or main author) of an accepted paper will receive a free PDF of their paper. Paper offprints are available for a fee and should be ordered at proof stage.

Research papers

A.N. Laws and A. Joern

Variable effects of dipteran parasitoids and management treatment on grasshopper fecundity in a tallgrass prairie 123

E.A. Böckmann, J. Tormos, F. Beitia and K. Fischer

Offspring production and self-superparasitism in the solitary ectoparasitoid *Spalangia cameroni* (Hymenoptera: Pteromalidae) in relation to host abundance 131

G.K. Mironidis and M. Savopoulou-Soultani

Effects of constant and changing temperature conditions on diapause induction in *Helicoverpa armigera* (Lepidoptera: Noctuidae) 139

F.N. Nyabuga, H.D. Loxdale, D.G. Heckel and W.W. Weisser

Coevolutionary fine-tuning: evidence for genetic tracking between a specialist wasp parasitoid and its aphid host in a dual metapopulation interaction 149

H. Yasui, S. Wakamura, N. Fujiwara-Tsujii, N. Arakaki, A. Nagayama, Y. Hokama, F. Mochizuki, T. Fukumoto, H. Oroku, K. Harano and S. Tanaka

Mating disruption by a synthetic sex pheromone in the white grub beetle *Dasylepida isbigakiensis* (Coleoptera: Scarabaeidae) in the laboratory and sugarcane fields 157

A. Beltrà, A. Soto and T. Malausa

Molecular and morphological characterisation of Pseudococcidae surveyed on crops and ornamental plants in Spain 165

W.L. Ni, Z.H. Li, H.J. Chen, F.H. Wan, W.W. Qu, Z. Zhang and D.J. Kriticos

Including climate change in pest risk assessment: the peach fruit fly, *Bactrocera zonata* (Diptera: Tephritidae) 173

C.Ch. Voudouris, P. Franck, J. Olivares, B. Sauphanor, Z. Mamuris, J.A. Tsitsipis and J.T. Margaritopoulos

Comparing the genetic structure of codling moth *Cydia pomonella* (L.) from Greece and France: long distance gene-flow in a sedentary pest species 185

A.D. Miller, P.A. Umina, A.R. Weeks and A.A. Hoffmann

Population genetics of the wheat curl mite (*Aceria tosichella* Keifer) in Australia: implications for the management of wheat pathogens 199

S. Boyer, H. Zhang and G. Lemprière

A review of control methods and resistance mechanisms in stored-product insects 213

M.S. Ansari, F. Hasan and N. Ahmad

Influence of various host plants on the consumption and utilization of food by *Pieris brassicae* (Linn.) 231

M. Traugott, J.R. Bell, L. Raso, D. Sint and W.O.C. Symondson

Generalist predators disrupt parasitoid aphid control by direct and coincidental intraguild predation 239