

CONTENTS

Breeding and genetics

- Hüttmann, H., Stamer, E., Junge, W., Thaller, G. and Kalm, E.*
Analysis of feed intake and energy balance of high-yielding first lactating Holstein cows with fixed and random regression models 181

- Macfarlane, J. M., Lambe, N. R., Bishop, S. C., Matika, O., Rius-Vilarrasa, E., McLean, K. A., Haresign, W., Wolf, B. T., McLaren, R. J. and Bünger, L.*
Effects of the Texel muscling quantitative trait locus on carcass traits in crossbred lambs 189

Nutrition

- Froidmont, E., Wathelet, B., Oger, R., Romnée, J. M., Colinet, A., Cloet, D., Didelez, M., Pichon, J. C., Boudry, C., Jean, G. and Bartiaux-Thill, N.*
Nutritional properties of potato protein concentrate compared with soybean meal as the main protein source in feed for the double-muscled Belgian Blue bull 200

- Haldar, S., Mondal, S., Samanta, S. and Ghosh, T. K.*
Effects of dietary chromium supplementation on glucose tolerance and primary antibody response against *peste des petits ruminants* in dwarf Bengal goats (*Capra hircus*) 209

- Teimouri Yansari, A. and Primohammadi, R.*
Effect of particle size of alfalfa hay and reconstitution with water on intake, digestion and milk production in Holstein dairy cows 218

- Martínez-Ramírez, H. R., Jeaurond, E. A. and de Lange, C. F. M.*
Nutrition-induced differences in body composition, compensatory growth and endocrine status in growing pigs 228

Physiology and functional biology of systems

- Eadmusik, S., Molette, C., Rémignon, H. and Fernandez, X.*
Different rates of glycolysis affect glycolytic activities and protein properties in turkey breast muscle 237

- Jurie, C., Picard, B., Heyman, Y., Cassar-Malek, I., Chavatte-Palmer, P., Richard, C. and Hocquette, J. F.*
Comparison of cloned and non-cloned Holstein heifers in muscle contractile and metabolic characteristics 244

- Patton, J., Murphy, J. J., O'Mara, F. P. and Butler, S. T.*
Responses of North American and New Zealand strains of Holstein–Friesian dairy cattle to homeostatic challenges during early and mid-lactation 251

- Prasad, S. K., Qureshi, T. N. and Qureshi, S.*
Mucuna pruriens seed powder feeding influences reproductive conditions and development in Japanese quail *Coturnix coturnix japonica* 261

- Fantinati, P., Zannoni, A., Bernardini, C., Forni, M., Tattini, A., Seren, E. and Bacci, M. L.*
Evaluation of swine fertilisation medium (SFM) efficiency in preserving spermatozoa quality during long-term storage in comparison to four commercial swine extenders 269

- Romański, K. W.*
Cholecystokinin-dependent selective inhibitory effect on 'minute rhythm' in the ovine small intestine 275

Behaviour, welfare and health

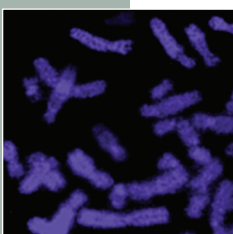
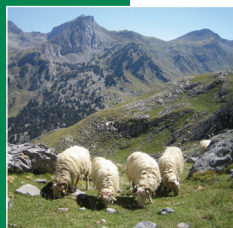
- Burden, F. A., Gallagher, J., Thiemann, A. K. and Trawford, A. F.*
Necropsy survey of gastric ulcers in a population of aged donkeys: prevalence, lesion description and risk factors 287

- Terrazas, A., Robledo, V., Serafín, N., Soto, R., Hernández, H. and Poindron, P.*
Differential effects of undernutrition during pregnancy on the behaviour of does and their kids at parturition and on the establishment of mutual recognition 294

Farming systems and environment

- Tolkamp, B. J. and Kyriazakis, I.*
Toward a new practical energy evaluation system for dairy cows 307

- Hagnestam-Nielsen, C. and Østergaard, S.*
Economic impact of clinical mastitis in a dairy herd assessed by stochastic simulation using different methods to model yield losses 315



Zoology & Natural History

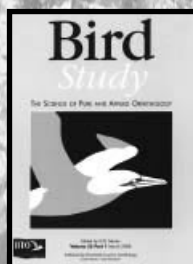
Journals from Taylor & Francis

Step inside our digital world and explore...

- Zoology & Natural History
- The Latest News and Offers
- Books & Related Journals
- Related Subject Areas
- Free Online Sample Copies

These pages aim to provide information about Zoology & Natural History journals, e-books and electronic publishing from Taylor & Francis. Just by visiting the site you will be able to access free online articles, special offers and request sample copies of our journals, as well as other geographical resources for academics, researchers, students, practitioners and laymen.

NEW Zoology titles to be published by Taylor & Francis in 2009:



Come and see what is new at Taylor & Francis today!

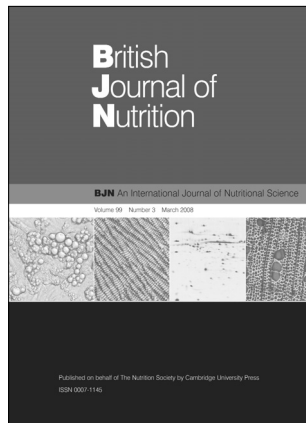
www.informaworld.com/zoology



Taylor & Francis
Taylor & Francis Group

CAMBRIDGE

JOURNALS



British Journal of Nutrition

Published on behalf of The Nutrition Society

British Journal of Nutrition
is available online at:
journals.cambridge.org/bjn

**To subscribe contact
Customer Services**

in Cambridge:
Phone +44 (0)1223 326070
Fax +44 (0)1223 325150
Email journals@cambridge.org

in New York:
Phone (845) 353 7500
Fax (845) 353 4141
Email
subscriptions_newyork@cambridge.org

Editor-in-chief
P.C. Calder, University of Southampton, UK

British Journal of Nutrition is a leading international peer-reviewed journal covering research on human and clinical nutrition, animal nutrition and basic science as applied to nutrition. The journal recognises the multidisciplinary nature of nutritional science and includes material from all of the specialities involved in nutrition research, including molecular and cell biology and the emerging area of nutritional genomics.

Price information is available at:
journals.cambridge.org/bjn

Free email alerts

Keep up-to-date with new material –
sign up at journals.cambridge.org/register

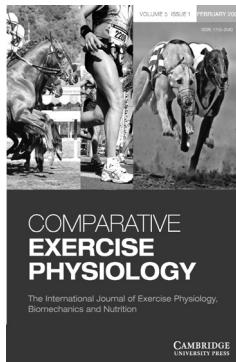
For a free online sample visit:
journals.cambridge.org/bjn



CAMBRIDGE
UNIVERSITY PRESS

CAMBRIDGE

JOURNALS



Comparative Exercise Physiology

The International Journal of Exercise Physiology,
Biomechanics and Nutrition

Comparative Exercise Physiology

is available online at
journals.cambridge.org/cep

**To subscribe contact
Customer Services**

in Cambridge:
Phone +44 (0)1223 326070
Fax +44 (0)1223 325150
Email journals@cambridge.org

in New York:
Phone (845) 353 7500
Fax (845) 353 4141
Email
subscriptions_newyork@cambridge.org

Editor-in-Chief

D. Marlin, University of Bristol, UK

Comparative Exercise Physiology is the only journal specifically dealing with the latest research in comparative exercise physiology across all animal species, including humans. It offers an understanding of the physiological, nutritional and biochemical parameters that determine levels of performance and athletic achievement, through both primary and review material. The core subjects include: exercise physiology, biomechanics, gait, nutrition and biochemistry, injury and rehabilitation, psychology and behaviour, and breeding and genetics.

Price information is available at
journals.cambridge.org/cep

Free email alerts

Keep up-to-date with new material –
sign up at journals.cambridge.org/register

For a free online sample visit
journals.cambridge.org/cep



CAMBRIDGE
UNIVERSITY PRESS