

Snow and firn permeability at Siple Dome, Antarctica

MARY R. ALBERT, EDWARD F. SHULTZ, FRANK E. PERRON, JR

Cold Regions Research and Engineering Laboratory, 72 Lyme Road, Hanover, NH 03755-1290, U.S.A.

ABSTRACT. The nature of air–snow exchange processes depends upon both the physical characteristics of the snow and forcing from the atmosphere. An understanding of snow–air transport processes and models of these processes are important for interpreting ice cores and for predicting remotely sensed snow-surface characteristics. Accurate modeling requires knowledge of the physical characteristics of the snow and firn. In this paper, measurements of snow and firn permeability from the surface down to 12 m depth at Siple Dome, Antarctica, are presented. The permeability varies greatly as a function of layer and depth, generally increasing to approximately 3 m, and generally decreasing below that. The maximum permeability, $280 \times 10^{-10} \text{ m}^2$, occurs at approximately 3 m depth. The lowest permeability in the top 12 m of snow and firn, $10 \times 10^{-10} \text{ m}^2$, was measured in the surface wind pack. The measurements show that layering and microstructure have large effects on permeability. A mathematical expression for the overall variation of permeability with depth is presented. It is shown that snow density is a poor indicator of permeability. Quantitative microscopy may be helpful in relating observed snow characteristics to permeability, and useful in modeling firnification and chemical-species transport.

INTRODUCTION

Chemical records contained within polar ice cores have the potential to provide detailed, long-term information about past climate conditions on Earth. To fully decode the ice-core record so that past atmospheric composition may be assessed, we must understand the nature of the air–snow transfer by which atmospheric chemistry signals become recorded in snow and changed in time as the snow is buried and compresses into firn and, eventually, ice. We must also be able to model the snow–air transfer processes before we can conduct the inverse modeling necessary for ice-core interpretation.

Surface processes, including diffusion, advection by air flow within the snow and radiation penetration, control heat and mass transfer and chemical transport within the snow. Diffusion occurs in all porous media, and represents a slow mixing process; in general, diffusion in snow is driven by temperature and by concentration gradients. Wind can cause air flow in the snow and advective channeling within the snow layers, promoting more rapid transport and greater exchange than diffusion (Albert, 1996). This ventilation of the snow affects chemical composition and exchange within the snow (Waddington and others, 1996; McConnell and others, 1998). Radiation affects energy exchange at the surface, and solar radiation penetration into the snow causes photolytic reactions.

The physical properties of snow and firn control the physical and chemical transport processes that occur within the snow crystals and within the interstitial air space. Snow is a layered porous medium. The layering is caused by different depositional events (see, e.g., Alley, 1988) and can result in snow with very different properties even in adjacent layers. Permeability is that property of a porous medium that affects the amount of fluid movement that can occur in the medium; it is a measure of the interconnected pore space. Siple Dome is

the site of an ice-core drilling program on the West Antarctic ice sheet; it is generally a dry-snow site with rare melt events. In snow pits and firn cores from Siple Dome, we have measured stratigraphy, density, permeability and microstructural characteristics as a function of layer, down to 15 m depth in the firn. We have found that the physical characteristics are strongly dependent upon layering and depth. In this paper we present the permeability measurements and discuss some preliminary examples of the effect of snow microstructure on permeability. These measurements define the physical transport parameters necessary for modeling snow–air exchange processes at Siple Dome.

Many laboratory and seasonal snow measurements of permeability have been reported (e.g. Shimizu, 1970), with huge scatter in the data owing to the complexities of different grain types, sizes and snow density. In polar firn, Waterhouse (1962) reported silicon fluid measurements of snow- and firn-permeability coefficients at a site 354 km east of Thule in Greenland. Measurements down to 30 m depth were taken from a manually excavated shaft. Although the data clearly show a wide variation that was attributed to layering, no details of the layering or microstructure were reported. The mean measured permeability coefficient varied from 1.5 m s^{-1} down to approximately 0.5 m s^{-1} at 30 m depth.

MEASUREMENT TECHNIQUE

Permeability, k , is a proportionality factor relating the pressure gradient to the flow rate through a porous medium via Darcy's law:

$$v_i = - \left(\frac{k_{ij} \partial P}{\mu \partial x_j} \right), \quad (1)$$

where P is pressure, μ is fluid viscosity, v_j is the flow velocity, and repeated indices for i and j imply summation.

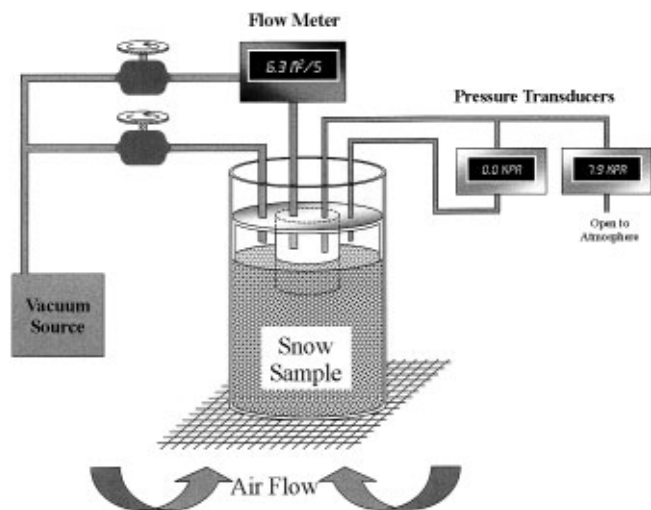


Fig. 1. Schematic of the permeameter.

The assumption of a linear relationship between pressure drop and flow rate in Darcy's law restricts its applicability to laminar flow. In order to measure permeability, we use a cylindrical cutter to cut a snow sample, then fit a double-cylinder head on the sampler (Shimizu, 1970) to pump air through the sample while measuring the air-flow rate and pressure drop across the sample. The double-cylinder head allows for different flows through the outer and inner cylinders. The flows may be adjusted until the pressures match; this provides compensation for edge effects and produces parallel flow in the sample under the inner cylinder. Air is drawn through the sample for various flow rates, and each measurement is checked to ensure that the flow rates are sufficiently low that the data lie along a straight line. Darcy's law is then used to calculate the permeability from the measured air-flow rates and pressure drops. A schematic illustration of the sampling device is shown in Figure 1. Our permeameter has undergone rigorous testing on glass beads and layered porous media, and is an upgraded version of earlier models described by Chacho and Johnson (1987) and Hardy and Albert (1993).

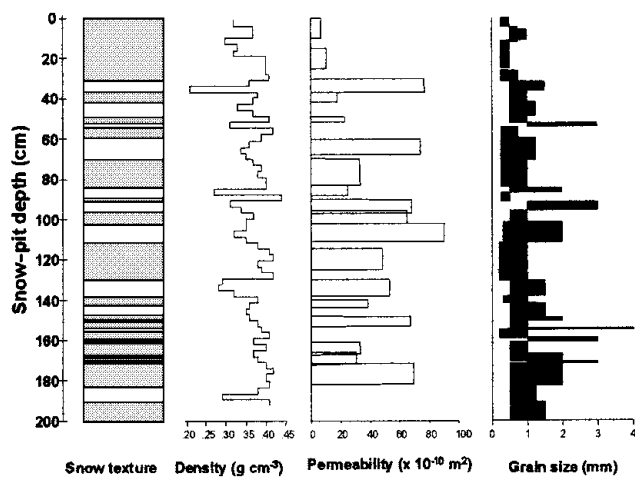


Fig. 2. Layering, density, permeability and grain-size range from pit measurements in the top 2 m of snow and firn at Siple Dome.

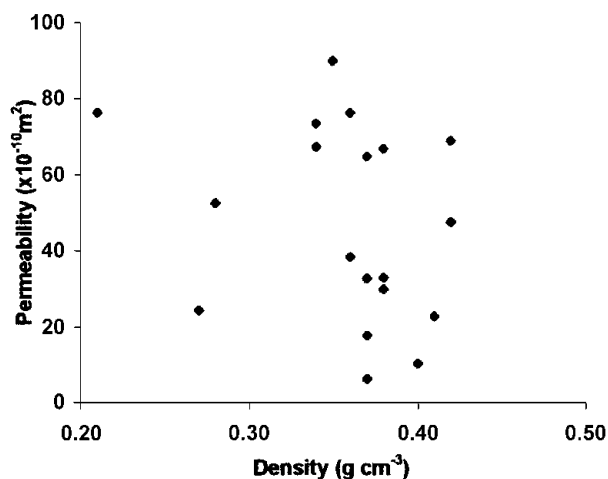


Fig. 3. Permeability as a function of density in the top 2 m.

RESULTS

Permeability

Measurements of snow and firn stratigraphy, density, crystal characteristics, microstructural imaging and permeability were taken from surface-snow pits and from firn cores at Siple Dome. Figure 2 depicts the layering, density, permeability and grain-size range from pit measurements in the top 2 m of snow and firn. For simplicity in the figure, the snow type is depicted as either fine-grained (gray) or coarse-grained (white). It can be seen that the coarse-grained layers are usually less dense than adjacent fine-grained layers. The most coarse-grained layers are often associated with surface-hoar formation that was buried by falling snow before being subjected to wind packing (Alley, 1988). The permeability varies by almost an order of magnitude in the top 2 m, depending upon layer type and depth. The grain-size measurements in this figure were made with a hand lens in the field, and the

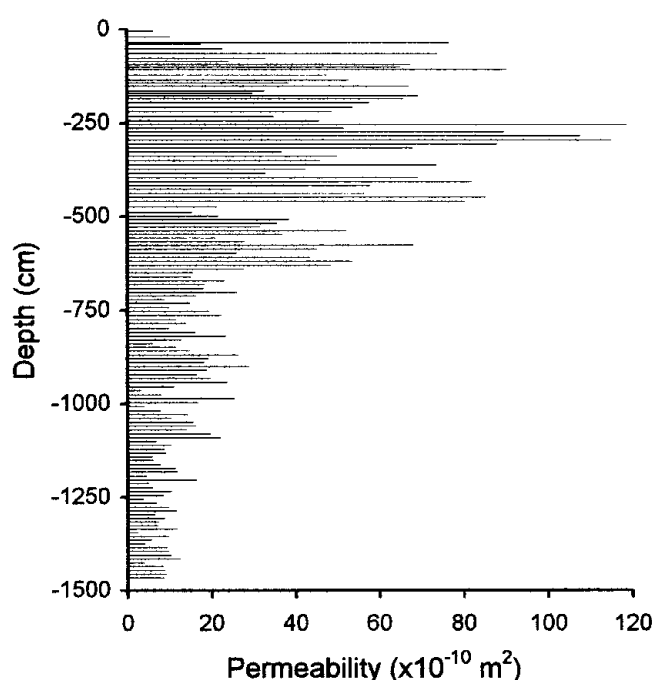


Fig. 4. Permeability of the snow and firn at Siple Dome from the surface down to 15 m depth.

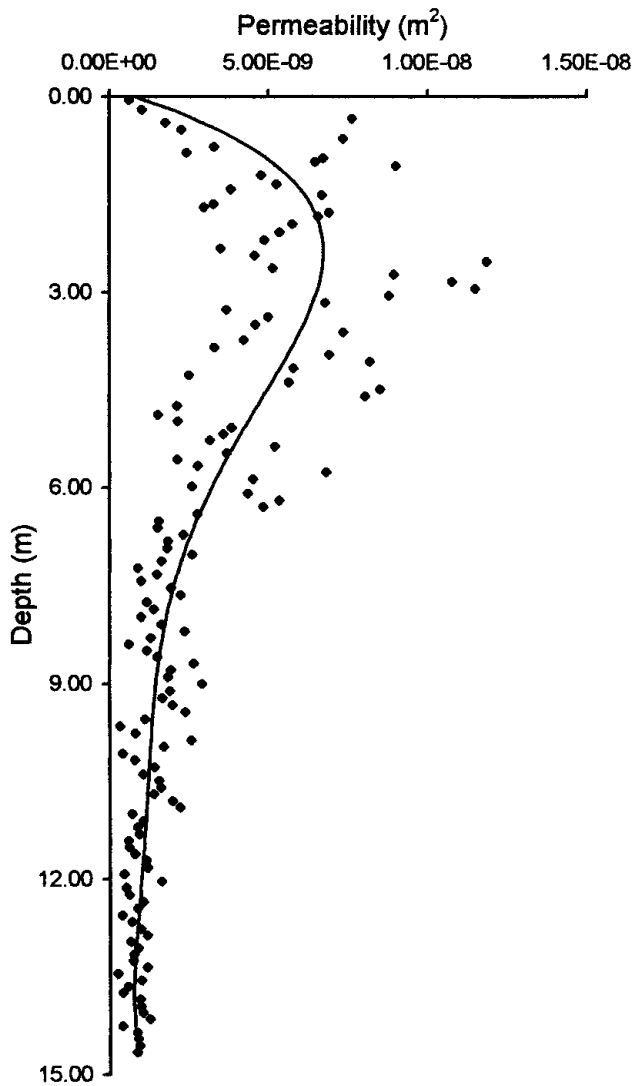


Fig. 5. Curve fit to gross variation of permeability with depth.

size range represents the largest crystal length for the range of crystal sizes observed at each depth. As can be seen from Figure 2, snow density is not a good indicator of permeability. This is further depicted in Figure 3, where the scatter plot of permeability with density in the top 2 m shows no clear pattern for correlation between permeability and density. Permeability is more closely related to grain-scale characteristics than to density, and further investigation of permeability and grain-scale characteristics, using quantitative microscopy on preserved thick sections, will be reported in the future.

For depths of > 2 m in the firn, we measured permeability from firn-core samples. Figure 4 depicts permeability measurements made on samples of snow from the surface down to 15 m depth. In contrast to a common assumption that the permeability will decrease with depth in firn, it is evident that the maximum permeability in the column of firn exists at approximately 3 m depth. This is most likely due to snow and firn metamorphism; recrystallization has created greater pore space in the near-subsurface firn. Below 3 m, compaction causes the permeability to decrease with depth. Our modeling (Albert, 1996) shows that large subsurface permeabilities allow significant ventilation in the top meters of firn, in spite of pressure variations ascribable to wind forcing decreasing with depth. One somewhat surprising observation from Figure 4 is that the lowest permeability in the top 10 m occurs in the wind-packed snow at the snow-air interface.

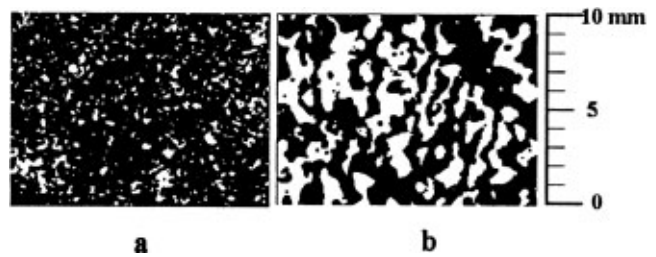


Fig. 6. Sample of the imaged microstructure of two layers of snow and firn at Siple Dome. (a) Wind-packed snow from approximately 18 cm depth: density = 212 kg m^{-3} ; equivalent sphere radius = 0.13 mm; volume/surface ratio = 0.044 mm. (b) Fine-grained firn from approximately 2 m depth: density = 430 kg m^{-3} ; equivalent sphere radius = 0.45 mm; volume/surface ratio = 0.15 mm.

These measurements were made in the spring (November) at Siple Dome; it is possible that seasonal variations in meteorology and their effects on snow metamorphism could alter the microstructure in the top 20 cm or so, creating greater (or lesser) permeabilities at the snow surface in other seasons.

For rough estimates it is sometimes useful to have an expression for gross variation of permeability with depth, ignoring layer-scale variation. In order to provide a formula for the larger-scale or gross variation of permeability with depth, a polynomial was fit to the permeability data:

$$P = (3.50 \times 10^{-13} z^5) - (1.60 \times 10^{-11} z^4) + (2.75 \times 10^{-10} z^3) - (2.10 \times 10^{-9} z^2) + (6.13 \times 10^{-9} z) + (8.3 \times 10^{-10}), \quad (2)$$

where P is the permeability in m^2 , and z is the depth in firn in m. Figure 5 depicts the data and the curve, which fits with an r^2 value of 0.65 due to the impact of smaller-scale (layer) variation on the larger-scale profile.

Microstructure

Snow and firn microstructure ultimately control the permeability and the physical and chemical processes that take place within the firn. Thick sections of snow samples were preserved in dimethyl phthalate and imaged (Perla, 1982) for quantitative microscopy of the microstructure. We present some preliminary images and measurements of the microstructure, for comparison with permeability measurements. Figure 6 depicts samples of the imaged microstructure from two layers of snow and firn at Siple Dome. A sample from the surface wind pack at approximately 18 cm depth is depicted in Figure 6a, where the snow density is 212 kg m^{-3} , equivalent sphere radius is 0.13 mm and the volume/surface ratio of the grains within the snow sample is 0.044 mm. The measured permeability on this wind pack was $10 \times 10^{-10} \text{ m}^2$. Printed on the same scale in Figure 6b is an image of fine-grained firn from approximately 2 m depth, where the density is 430 kg m^{-3} , equivalent sphere radius is 0.45 mm and the volume/surface ratio is 0.15 mm. The measured permeability on this sample was $29 \times 10^{-10} \text{ m}^2$. The firn at this depth is approximately 6 years old. In spite of the density being much greater than that of the wind pack, the grain-scale characteristics serve to yield a permeability that is almost triple that of the wind pack. Changing meteorology over time has driven snow metamorphism, causing crystal growth, increased pore space and increased permeability in

the firn at this depth over the snow closer to the surface. The layered nature of the snow and firn affects both advective and diffusive transport processes. Further analysis is underway to relate the permeability measurements to the microstructural measurements, and to use the measurements to model heat, water-vapor and chemical-species transport through the firn.

CONCLUSIONS

Measurements of snow and firn permeability and microstructure at Siple Dome show that layering and microstructure have large effects on permeability. The maximum permeability, $280 \times 10^{-10} \text{ m}^2$, occurs at approximately 3 m depth and generally decreases below that. This could serve to facilitate ventilation and transport processes at that depth, despite driving forces that are reduced in comparison to those at the surface. The lowest permeability in the top 15 m of snow and firn, $10 \times 10^{-10} \text{ m}^2$, was measured in the surface wind pack in spring (November). It is hypothesized that because the surface snow is subject to large seasonal and sometimes diurnal temperature gradients, near-surface metamorphism may be able to cause seasonal variations in the permeability of the snow in approximately the top 20 cm, causing it to have greater (or lesser) permeability in other seasons. An expression relating the gross permeability variation with depth was presented. We found that density is in general not a good indicator of permeability. Quantitative microscopy may be helpful in relating observed snow characteristics to permeability and useful in modeling firnification and chemical-species transport.

ACKNOWLEDGEMENTS

We thank K. Taylor and G. Lamorey, Science Coordination Office, for their efforts at Siple Dome, Antarctic Science Associates for excellent science support in the field, and the Polar Ice Coring Office for drilling the firn core. This work was funded by U.S. National Science Foundation grant NSF-OPP 9526601. We gratefully acknowledge the NSF grant supplement for support of E. Shultz through the Research Experiences for Undergraduates program.

REFERENCES

- Albert, M. R. 1996. Modeling heat, mass, and species transport in polar firn. *Ann. Glaciol.*, **23**, 138–143.
- Alley, R. B. 1988. Concerning the deposition and diagenesis of strata in polar firn. *J. Glaciol.*, **34**(118), 283–290.
- Chacho, E. F., Jr and J. B. Johnson. 1987. Air permeability of snow. [Abstract] *EOS*, **68**(44), 1271.
- Hardy, J. P. and D. G. Albert. 1993. The permeability of temperate snow: preliminary links to microstructure. *Proc. East. Snow Conf.* 50th Annual Meeting, 8–10 June 1993. Québec, Que., Canada, 149–156.
- McConnell, J. R., R. C. Bales, R. W. Stewart, A. M. Thompson, M. R. Albert and R. Ramos. 1998. Physically based modeling of atmosphere-to-snow-to-firn transfer of H_2O_2 at South Pole. *J. Geophys. Res.*, **103**(D9), 10,561–10,570.
- Perla, R. 1982. Preparation of section planes in snow specimens. *J. Glaciol.*, **28**(98), 199–204.
- Shimizu, H. 1970. Air permeability of deposited snow. *Contrib. Inst. Low Temp. Sci., Ser. A* **22**, 1–32.
- Waddington, E. D., J. Cunningham and S. L. Harder. 1996. The effects of snow ventilation on chemical concentrations. In Wolff, E. W. and R. C. Bales, eds. *Chemical exchange between the atmosphere and polar snow*. Berlin, etc., Springer-Verlag, 403–451. (NATO ASI Series I: Global Environmental Change 43.)
- Waterhouse, R. W. 1962. Analysis of data from a snow profile. *CRREL Res. Rep.* 90.