



## Original article

# Meteorological parameters and air pollen count in association with self-reported peripartum depressive symptoms

Hanna E. Henriksson<sup>a,\*</sup>, Richard A. White<sup>b</sup>, Sara M. Sylvén<sup>a,c</sup>, Fotios C. Papadopoulos<sup>c,1</sup>, Alkistis Skalkidou<sup>a,1</sup>

<sup>a</sup> Department of Women's and Children's Health, Uppsala University, Uppsala University Hospital, 75185, Uppsala, Sweden

<sup>b</sup> Norwegian Institute of Public Health, Oslo, Norway

<sup>c</sup> Department of Neuroscience, Psychiatry, Uppsala University, Uppsala, Sweden

## ARTICLE INFO

## Article history:

Received 22 April 2018

Received in revised form 25 June 2018

Accepted 30 June 2018

Available online 19 July 2018

## Keywords:

Meteorological parameters

Pollen

Postpartum

Antenatal

Peripartum

Depressive symptoms

## ABSTRACT

**Background:** Meteorological parameters and air pollen count have been associated with affective disorders and suicide. Regarding peripartum depression, the literature is restricted and inconclusive.

**Methods:** This cross-sectional study included women (pregnant,  $n = 3843$ ; postpartum,  $n = 3757$ ) who participated in the BASIC (*Biology, Affect, Stress, Imaging, and Cognition*) study 2010–2015 and the UPPSAT (*Uppsala-Athens*) study (postpartum,  $n = 1565$ ) in 2006–2007. Cases were defined according to presence of depressive symptoms during pregnancy (gestational week 32) and 6 weeks postpartum, using the Edinburgh Postnatal Depression Scale (EPDS). Exposure of sunshine, temperature, precipitation, snow coverage, and air pollen counts of durations of 1, 7, and 42 days prior to the outcome were studied for associations with depressive symptoms, using negative binomial regression.

**Results:** Prior to Bonferroni correction, the concentration of mugwort pollen, both one week and six weeks before the EPDS assessment at gestational week 32, was inversely associated with depressive symptoms in pregnancy, both before and after adjustment for season. No associations were found between the exposure to meteorological parameters and pollen and depressive symptoms, at the same day of depressive symptoms' assessment, the previous week, or the six weeks prior to assessment, either during pregnancy or postpartum after Bonferroni correction.

**Conclusions:** There was no evidence that neither short-term nor long-term exposure to meteorological parameters or air pollen counts were associated with self-reported peripartum depressive symptoms in Uppsala, Sweden.

© 2018 Elsevier Masson SAS. All rights reserved.

## 1. Introduction

Meteorological parameters, especially sunshine, have been thought to influence the human mood since ancient times. A treatment option for melancholy in Aretaeus's time was to stare directly into the sun [1]. In 1984, Rosenthal et al. [2] defined Seasonal Affective Disorder (SAD), which has been seen as a disorder associated with less light during the winter months, and reported on the antidepressant effect of light therapy.

Although meteorological parameters have been extensively studied for their association with suicide [3–15], the literature is more limited and inconclusive on the association between those parameters and mood or other psychiatric outcomes [16–24].

Radua et al. [16] reported a negative one-month delayed association between a climatic factor primarily composed of temperature and sunlight, and depression with melancholic features. The same association was reported between a climatic factor mostly composed of barometric pressure and depression with psychotic features [16]. Increase in daylight [19,23] and temperature [19,22] has been associated with a reduced risk of depression and mental health distress. Nevertheless, the reversed pattern has also been reported [24]. Humidity has similarly been associated with depression and psychiatric admissions [21,22]. While the above-mentioned studies have reported on associations for some parameters, their findings are negative for others [17,19,21]. For example, while humidity was associated with admissions of affective disorders in the study by Salib et al. [21], the findings for sunshine hours, temperature, and rainfall were negative. Moreover, a Danish study reported negative findings on the association between several meteorological parameters and onset of bipolar disorder [20]. Similarly, a large study from Ireland

\* Corresponding author.

E-mail address: [hanna.henriksson@kbh.uu.se](mailto:hanna.henriksson@kbh.uu.se) (H.E. Henriksson).

<sup>1</sup> Equal contribution.

**Table 1**  
Background characteristics of the participants of the BASIC and UPPSAT studies.

Characteristics	BASIC		UPPSAT
	Gestational week 32 n (%)	6 weeks postpartum n (%)	6 weeks postpartum n (%)
Participants	3843 (100)	3757 (100)	1565 (100)
EPDS score, Median (IQR)	5.0 (2.0–8.0)	5.0 (3.0–9.0)	5.0 (3.0–8.0)
EPDS score $\geq$ 13	362 (9.4)		
EPDS score $\geq$ 12		493 (13.1)	173 (11.1)
DSRS		138 (5.2)	
Age (years), Median (IQR)	31.0 (28.0–34.0)	31.0 (28.0–35.0)	31.0 (28.0–34.0)
BMI (kg/m <sup>2</sup> ), Median (IQR)	22.8 (21.0–25.4)	22.8 (21.0–25.4)	22.9 (21.0–25.3)
College/university	2927 (79.4)	2738 (79.1)	841 (63.7)
Current employment, gw 32			
Full-time/part-time/studying	2582 (71.8)	2307 (72.3)	1183 (93.8)
Unemployed/sick-leave/maternity leave	1015 (28.2)	883 (27.7)	
Depression history	2024 (54.9)	1877 (54.3)	329 (24.7)
Allergies	814 (22.2)	762 (22.2)	
Primipara	1742 (47.8)	1701 (47.0)	729 (46.6)
Unplanned pregnancy	562 (15.3)	517 (15.3)	34 (15.3)
< 6 hours of night sleep	369 (9.6)	835 (22.3)	348 (22.5)
Way of giving birth			
Vaginal		2797 (74.4)	1190 (76.0)
Vacuum extraction		323 (8.6)	139 (8.9)
Elective cesarean		295 (7.9)	90 (5.8)
Emergency cesarean		307 (8.2)	134 (8.6)
Crash cesarean		35 (0.9)	12 (0.8)
Newborn gender = boy		1932 (53.3)	816 (52.4)
Baby admitted to NICU		291 (8.0)	65 (4.2)
Non-exclusive breastfeeding		928 (24.8)	299 (19.1)
Baby problems		1262 (34.1)	521 (34.3)
Inadequate partner support with baby		1344 (37.2)	616 (39.6)
$\geq$ 2 SLEs last 12 months		490 (13.1)	146 (12.4)
Season			
December–February	1011 (26.3)	710 (18.9)	364 (23.3)
March–May	1006 (26.2)	1010 (26.9)	366 (23.4)
June–August	1000 (26.0)	1059 (28.2)	440 (28.1)
September–November	826 (21.5)	978 (26.0)	395 (25.2)

EPDS: Edinburgh Postnatal Depression Scale; IQR: interquartile range; gw: gestational week; DSRS: Depression Self-Rating Scale; BMI: body mass index; NICU: neonatal intensive care unit; SLEs: stressful life events.

found no associations between hospital admissions of depression and hours of sunshine, sunlight radiation, temperature, rainfall, wind speed and direction, and barometric pressure [18].

Apart from meteorological parameters as a possible explanation to the seasonality of suicide and mood symptoms, aeroallergens have been discussed as a possible triggering factor [25,26]. Qin et al. [26], reported a 13% increase in weekly numbers of suicides when the pollen count increased from 0 to '30–100' grains/m<sup>3</sup> air, also finding risks with even smaller changes. Similarly, among younger women, a two-fold increase in suicide in the peak-pollen period compared with the pre-pollen period has been reported [25]. Moreover, higher rates of allergy in patients with depression have been described, as well as greater rates of depression in patients with allergic rhinitis than in the general population [27].

In the fifth edition of the Diagnostic and Statistical Manual of Mental Disorders (DSM-5), peripartum depression is defined as a major depressive episode with onset during pregnancy (antenatal depression) or within four weeks after childbirth (postpartum depression) [28]. Nevertheless, in both research and clinical practice, the postpartum period is often extended to include the first year after birth [29]. A recent systematic review estimated the pooled prevalence of peripartum depression to be 11.9% [30]. Previous mental illness is the most prominent risk factor for developing peripartum depression, but lack of social support, unplanned or unwanted pregnancy, adverse life events, pregnancy complications, and low income can also increase the risk [31–33]. Premature birth, low birth weight, and negative effects

on the social behavior and cognitive development have been reported increased in children of mothers with peripartum depression [34–36].

Seasonal patterns in peripartum depressive symptoms have been studied, although there is no clear consensus [37–46]. We have previously reported a seasonal pattern in postpartum depressive symptoms, with an increased risk in women giving birth in October–December, compared with those giving birth in April–June [44], which could not be replicated in a later study from the same catchment area [46]. In the latter study however, the same seasonal pattern was observed in postpartum depressive symptoms only during 2011, which raised the hypothesis if extreme climatic conditions are associated with peripartum depressive symptoms. Furthermore, few studies have investigated the possible contribution of meteorological parameters to these symptoms. Postpartum depression has been suggested to decrease in season of intermediate daylight and increase during season with the least daylight [38]. Similarly, seasonally longer nights have been suggested to increase antenatal depressive symptoms in depressed women [40]. However, in a large study by Jewell et al. [39], no associations between daylight at the time of childbirth and postpartum depression were found. Moreover, to the best of our knowledge, there are no studies on the possible role of aeroallergens and peripartum depression.

The aim of this study was to examine if meteorological parameters and air pollen count are associated with self-reported peripartum depressive symptoms in Uppsala, Sweden. Two study populations were used.

**Table 2**  
Negative binomial regression derived Exp(B) and 95% confidence intervals for EPDS score at gestational week 32 from the BASIC study in association with meteorological parameter or air pollen count.

Exposure	Model 1 <sup>a</sup>			Model 2 <sup>b</sup>			Model 3 <sup>c</sup>
	Exp(B)	95% CI	Bonferroni adjusted p-value	Exp(B)	95% CI	Bonferroni adjusted p-value	Bonferroni adjusted interaction p-value
<i>Same day as EPDS</i>							
Maximum temperature	0.997	0.933–1.001	1.000	0.995	0.988–1.001	1.000	1.000
Precipitation	1.004	0.995–1.013	1.000	1.004	0.995–1.013	1.000	1.000
Snow coverage	1.024	0.942–1.112	1.000	1.023	0.915–1.143	1.000	1.000
Sunshine hours	0.997	0.990–1.004	1.000	0.997	0.989–1.006	1.000	1.000
Alder	1.001	0.999–1.002	1.000	1.000	0.999–1.002	1.000	1.000
Mugwort	0.988	0.968–1.008	1.000	0.991	0.970–1.012	1.000	1.000
Birch	1.000	1.000–1.000	1.000	1.000	1.000–1.000	1.000	1.000
Hazel	1.006	0.999–1.013	1.000	1.006	0.999–1.013	1.000	1.000
Grass	1.001	0.998–1.005	1.000	1.003	0.999–1.008	1.000	1.000
Oak	0.999	0.999–1.000	1.000	0.999	0.998–1.000	1.000	1.000
<i>One week prior to EPDS</i>							
Maximum temperature	0.997	0.994–1.001	1.000	0.995	0.987–1.002	1.000	1.000
Precipitation	1.008	0.988–1.029	1.000	1.012	0.990–1.033	1.000	1.000
Snow coverage	1.021	0.936–1.113	1.000	1.015	0.901–1.144	1.000	1.000
Sunshine hours	0.993	0.984–1.003	1.000	0.989	0.974–1.003	1.000	1.000
Alder	1.000	0.999–1.002	1.000	1.000	0.999–1.002	1.000	1.000
Mugwort	0.970	0.945–0.944*	0.495	0.969	0.942–0.998*	1.000	1.000
Birch	1.000	1.000–1.000	1.000	1.000	1.000–1.000	1.000	1.000
Hazel	1.000	0.988–1.013	1.000	0.999	0.986–1.012	1.000	1.000
Grass	1.002	0.998–1.006	1.000	1.006	1.000–1.011	1.000	1.000
Oak	1.000	0.999–1.001	1.000	1.000	0.999–1.001	1.000	1.000
<i>Six weeks prior to EPDS</i>							
Maximum temperature	0.997	0.993–1.001	1.000	0.993	0.985–1.001	1.000	1.000
Precipitation	0.989	0.941–1.040	1.000	0.996	0.942–1.054	1.000	1.000
Snow coverage	1.036	0.939–1.144	1.000	1.026	0.905–1.164	1.000	1.000
Sunshine hours	0.994	0.983–1.005	1.000	0.988	0.968–1.009	1.000	1.000
Alder	1.000	0.998–1.003	1.000	1.000	0.997–1.003	1.000	1.000
Mugwort	0.957	0.924–0.992*	0.506	0.957	0.920–0.996*	0.917	1.000
Birch	1.000	1.000–1.000	1.000	1.000	1.000–1.000	1.000	1.000
Hazel	1.000	0.982–1.019	1.000	0.996	0.974–1.018	1.000	1.000
Grass	0.998	0.993–1.002	1.000	0.999	0.992–1.007	1.000	1.000
Oak	1.000	0.999–1.002	1.000	1.001	0.999–1.003	1.000	1.000

CI: confidence interval; EPDS: Edinburgh Postnatal Depression Scale \*p-value <0.05 prior to Bonferroni correction, but not after <sup>a</sup>Unadjusted model <sup>b</sup>Adjusted for season <sup>c</sup>Adjusted for season and interaction term between season x respective meteorological parameter/pollen.

## 2. Methods

The current study was undertaken as part of both the BASIC (*Biology, Affect, Stress, Imaging, and Cognition*) and UPPSAT (*Uppsala-Athens*) studies conducted in Uppsala, Sweden. Uppsala is located in central Sweden, a country with a temperate climate. Winters are usually mildly cold with frequent snow or rainfalls, and summers are warm and sunny. Of note, in Uppsala, the climate can vary greatly between the years.

BASIC is an on-going longitudinal population-based study with multiple assessments during pregnancy and after childbirth. The study was initiated in 2009 and the primary aim is to study several aspects of affective disorders during the peripartum period [47]. Women from Uppsala County Council, who register for routine ultrasound around gestational week 17 at Uppsala University Hospital are asked about participation. Exclusion criteria are being under the age of 18 years, not being able to communicate adequately in Swedish, protected identity, blood borne infectious diseases, or a non-viable pregnancy.

The UPPSAT study was a population-based cohort study conducted between May 2006 and June 2007 [48]. The primary aim of the study was to investigate maternal, paternal, and infant well-being after childbirth [48,49]. Women from Uppsala County Council, who gave birth at Uppsala University Hospital were contacted by their midwife or midwife's assistant after childbirth and asked to participate. Exclusion criteria included: inability to adequately communicate in Swedish, protected identity,

intrauterine demise or infant being immediately admitted to the neonatal intensive care unit.

Both studies were conducted at the Department of Obstetrics and Gynecology at Uppsala University Hospital, which is responsible for all women giving birth within Uppsala county, as well as high-risk pregnancies from nearby counties. Written informed consent was obtained from all participating women.

### 2.1. Study population

The current study included women participating in the BASIC (January 2010 to December 2015) and UPPSAT (May 2006 to June 2007) studies.

### 2.2. Outcome variables

The main outcome was presence of depressive symptoms, as measured by the Edinburgh Postnatal Depression Scale (EPDS), at (i) gestational week 32 (BASIC) and (ii) 6 weeks postpartum (BASIC and UPPSAT). The main outcome was analyzed using continuous EPDS scores. Response at both time points was not mandatory for inclusion, answering one questionnaire was sufficient. The EPDS is a self-administered instrument aimed to screen for depressive symptoms during pregnancy and the postpartum period [50]. The questionnaire contains ten statements with four alternative answers, and gives a total score from 0–30. A higher score signals an increased likelihood of the woman being depressed.

**Table 3**

Negative binomial regression derived Exp(B) and 95% confidence intervals for EPDS score at 6 weeks postpartum from the BASIC study in association with meteorological parameter or air pollen count.

Exposure	Model 1 <sup>a</sup>			Model 2 <sup>b</sup>			Model 3 <sup>c</sup>
	Exp(B)	95% CI	Bonferroni adjusted p-value	Exp(B)	95% CI	Bonferroni adjusted p-value	Bonferroni adjusted interaction p-value
<i>Same day as EPDS</i>							
Maximum temperature	1.001	0.997–1.005	1.000	1.001	0.994–1.007	1.000	1.000
Precipitation	1.001	0.992–1.010	1.000	1.001	0.991–1.010	1.000	1.000
Snow coverage	0.975	0.886–1.072	1.000	0.971	0.857–1.100	1.000	1.000
Sunshine hours	1.000	0.994–1.007	1.000	0.999	0.991–1.007	1.000	1.000
Alder	1.000	0.999–1.001	1.000	1.000	0.999–1.001	1.000	1.000
Mugwort	1.004	0.981–1.028	1.000	1.003	0.978–1.029	1.000	1.000
Birch	1.000	1.000–1.000	1.000	1.000	1.000–1.000	1.000	1.000
Hazel	0.995	0.982–1.007	1.000	0.994	0.981–1.007	1.000	1.000
Grass	1.000	0.997–1.003	1.000	0.999	0.996–1.003	1.000	1.000
Oak	1.000	0.999–1.001	1.000	1.000	0.999–1.001	1.000	1.000
<i>One week prior to EPDS</i>							
Maximum temperature	1.001	0.997–1.005	1.000	1.002	0.995–1.009	1.000	1.000
Precipitation	0.985	0.965–1.006	1.000	0.984	0.963–1.005	1.000	1.000
Snow coverage	0.988	0.891–1.095	1.000	0.993	0.864–1.141	1.000	1.000
Sunshine hours	1.003	0.993–1.012	1.000	1.002	0.988–1.016	1.000	1.000
Alder	0.999	0.998–1.001	1.000	0.999	0.998–1.000	1.000	1.000
Mugwort	1.005	0.982–1.029	1.000	1.004	0.978–1.030	1.000	1.000
Birch	1.000	1.000–1.000	1.000	1.000	1.000–1.000	1.000	1.000
Hazel	0.998	0.988–1.008	1.000	0.998	0.987–1.008	1.000	1.000
Grass	1.001	0.997–1.004	1.000	1.000	0.996–1.005	1.000	1.000
Oak	1.000	1.000–1.000	1.000	1.000	1.000–1.001	1.000	1.000
<i>Six weeks prior to EPDS</i>							
Maximum temperature	1.001	0.997–1.006	1.000	1.003	0.995–1.011	1.000	1.000
Precipitation	0.999	0.952–1.047	1.000	0.999	0.946–1.055	1.000	1.000
Snow coverage	0.988	0.883–1.105	1.000	0.988	0.854–1.142	1.000	1.000
Sunshine hours	1.001	0.990–1.013	1.000	0.997	0.978–1.017	1.000	1.000
Alder	1.000	0.997–1.002	1.000	0.999	0.996–1.002	1.000	1.000
Mugwort	1.012	0.982–1.043	1.000	1.012	0.978–1.048	1.000	1.000
Birch	1.000	1.000–1.000	1.000	1.000	1.000–1.000	1.000	1.000
Hazel	1.000	0.982–1.017	1.000	0.998	0.977–1.020	1.000	1.000
Grass	1.000	0.996–1.005	1.000	0.999	0.992–1.007	1.000	1.000
Oak	1.001	0.999–1.002	1.000	1.001	0.999–1.002	1.000	1.000

CI: confidence interval; EPDS: Edinburgh Postnatal Depression Scale \*p-value < 0.05 prior to Bonferroni correction, but not after <sup>a</sup>Unadjusted model <sup>b</sup>Adjusted for season <sup>c</sup>Adjusted for season and interaction term between season x respective meteorological parameter/pollen.

### 2.3. Outcome variables for sensitivity analyses

As a secondary outcome, the EPDS was also dichotomized and the presence of self-reported depressive symptoms was investigated. The cut-off  $\geq 13$  has been validated in a Swedish pregnant population, with a sensitivity of 77% and specificity of 94% [51], and was used for depressive symptoms at gestational week 32. At 6 weeks postpartum, women were screened positive for self-reported depressive symptoms when having a total score of  $\geq 12$  [52]. A validation of this cut-off in a Swedish population yielded a sensitivity of 96% and a specificity of 49% [52]. In order to decrease the number of missing values in the BASIC study, if only one of the ten statements was missing (gestational week 32, n = 34 (0.9%); 6 weeks postpartum, n = 115 (3.1%)), this answer was imputed by calculating the mean score based on nine answers.

In addition, the Depression Self-Rating Scale (DSRS) [53] was used to more strictly evaluate depressive symptoms at 6 weeks postpartum (BASIC). The DSRS is a self-report instrument including the same criteria for depressive symptoms as in the DSM-IV, including the C criterion on impaired function. Even so, its self-report nature does not provide a clinical diagnosis. Compared with an expert clinical diagnosis, the DSRS has a sensitivity of 86% and specificity of 75% [53]. The DSRS was not available at gestational week 32 in the BASIC study, nor in the UPPSAT study.

The results of the sensitivity analyses are presented in the Supplementary Tables 1–4.

### 2.4. Demographic characteristics

Most of the data, including the EPDS and DSRS, derived from web surveys answered at gestational week 17, 32, and at 6 weeks postpartum. In BASIC, the women were asked about their weight and height, educational attainment, depression history, allergy, and planned pregnancy in the survey sent out at gestational week 17. Data on depression history were derived from combining the question “Have you ever had a depression?”, with yes/no alternative answer with a question on whether the participant ever had visited a psychiatrist or psychologist. This was done as the question on solely depression was absent in the UPPSAT material. Information on allergies was derived from the question “Have you ever had any of these diseases before you became pregnant?”, where allergy was one alternative answer. Lastly, planned pregnancy derived from the question “Was the pregnancy planned?”, with yes/no alternative answers. At gestational week 32, the women were asked about current employment, hours of sleep per night, and they filled out the EPDS. At 6 weeks postpartum, data was collected on hours of sleep per night, breastfeeding, baby problems, perceived help with baby care by their partner, and stressful life events (SLEs). SLEs were assessed

**Table 4**  
Negative binomial regression derived Exp(B) and 95% confidence intervals for EPDS score at 6 weeks postpartum from the UPPSAT study in association with meteorological parameter or air pollen count.

Exposure	Model 1 <sup>a</sup>			Model 2 <sup>b</sup>			Model 3 <sup>c</sup>
	Exp(B)	95% CI	Bonferroni adjusted p-value	Exp(B)	95% CI	Bonferroni adjusted p-value	Bonferroni adjusted interaction p-value
<i>Same day as EPDS</i>							
Maximum temperature	0.997	0.992–1.003	1.000	1.001	0.991–1.011	1.000	1.000
Precipitation	0.993	0.983–1.003	1.000	0.994	0.984–1.003	1.000	1.000
Snow coverage	1.059	0.915–1.225	1.000	0.985	0.824–1.178	1.000	1.000
Sunshine hours	0.999	0.988–1.009	1.000	1.005	0.992–1.018	1.000	1.000
Alder	1.000	0.992–1.008	1.000	1.002	0.993–1.011	1.000	1.000
Mugwort	1.008	0.975–1.042	1.000	1.013	0.977–1.050	1.000	1.000
Birch	1.000	0.999–1.000	1.000	1.000	0.999–1.001	1.000	1.000
Hazel	1.004	0.986–1.022	1.000	1.007	0.989–1.026	1.000	1.000
Grass	0.997	0.993–1.002	1.000	0.997	0.992–1.002	1.000	1.000
Oak	1.000	0.999–1.001	1.000	1.000	0.999–1.001	1.000	1.000
<i>One week prior to EPDS</i>							
Maximum temperature	0.996	0.990–1.002	1.000	0.995	0.984–1.007	1.000	1.000
Precipitation	0.990	0.965–1.016	1.000	0.990	0.964–1.016	1.000	1.000
Snow coverage	1.056	0.895–1.246	1.000	0.978	0.801–1.196	1.000	1.000
Sunshine hours	0.991	0.977–1.004	1.000	0.995	0.975–1.015	1.000	1.000
Alder	0.998	0.988–1.008	1.000	1.000	0.990–1.011	1.000	1.000
Mugwort	0.995	0.957–1.034	1.000	0.999	0.956–1.044	1.000	1.000
Birch	0.999	0.998–1.000	1.000	1.000	0.998–1.001	1.000	1.000
Hazel	0.999	0.974–1.025	1.000	1.005	0.978–1.033	1.000	1.000
Grass	0.997	0.993–1.002	1.000	0.997	0.991–1.003	1.000	1.000
Oak	0.999	0.998–1.001	1.000	1.000	0.998–1.001	1.000	1.000
<i>Six weeks prior to EPDS</i>							
Maximum temperature	0.997	0.991–1.003	1.000	0.998	0.985–1.010	1.000	1.000
Precipitation	1.004	0.942–1.071	1.000	0.977	0.889–1.074	1.000	1.000
Snow coverage	1.054	0.855–1.299	1.000	1.025	0.801–1.312	1.000	1.000
Sunshine hours	0.988	0.972–1.003	1.000	0.986	0.956–1.018	1.000	1.000
Alder	0.996	0.981–1.010	1.000	1.005	0.983–1.026	1.000	1.000
Mugwort	0.983	0.917–1.055	1.000	0.989	0.914–1.069	1.000	1.000
Birch	0.998	0.996–1.000	1.000	0.998	0.996–1.000	1.000	1.000
Hazel	0.993	0.956–1.031	1.000	1.019	0.965–1.076	1.000	1.000
Grass	0.998	0.990–1.005	1.000	0.997	0.986–1.009	1.000	1.000
Oak	0.998	0.995–1.000	1.000	0.998	0.996–1.001	1.000	1.000

CI: confidence interval; EPDS: Edinburgh Postnatal Depression Scale \*p-value < 0.05 prior to Bonferroni correction, but not after <sup>a</sup>Unadjusted model <sup>b</sup>Adjusted for season <sup>c</sup>Adjusted for season and interaction term between season x respective meteorological parameter/pollen.

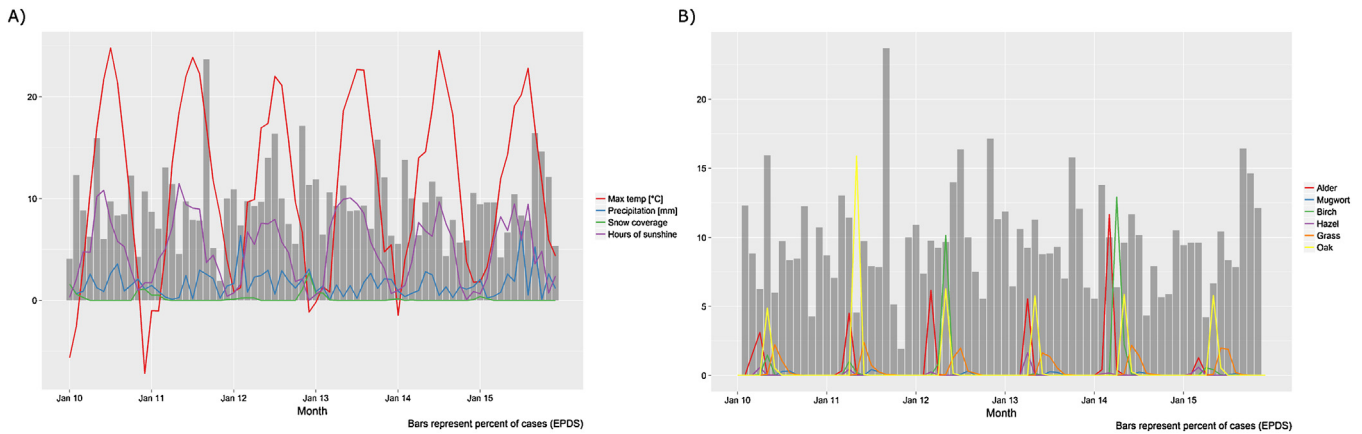
using the Rosengren Scale [54]. In addition, the women were asked to fill out the EPDS. In UPPSAT, at 5 days postpartum, the women answered questions about their weight, height, educational attainment, and if the pregnancy was planned. At 6 weeks postpartum the women were asked to fill out the EPDS and answer questions regarding depression history, hours of sleep per night, breastfeeding, baby problems, perceived help with baby care by their partner, and SLEs. The recoding of the data, for both BASIC [46] and UPPSAT [48], has previously been described in detail. The medical records were used to retrieve information on date of childbirth, newborn sex, way of giving birth, parity, and whether the child was transferred to the neonatal intensive care unit.

## 2.5. Exposures

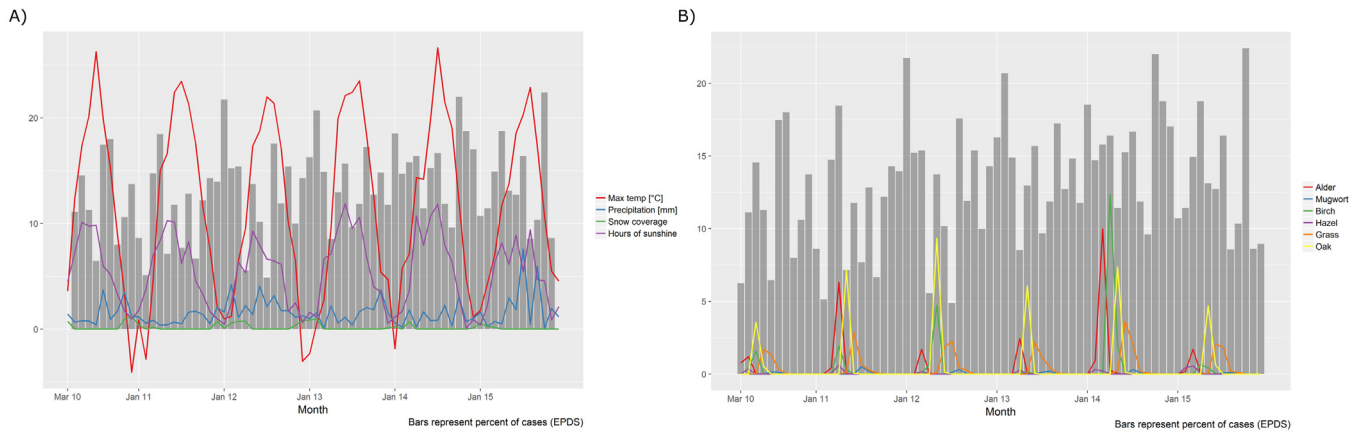
All data on meteorological parameters were obtained from the Swedish University of Agricultural Sciences in Uppsala, Sweden. Daily data from 2006 to 2014 were collected from the same climate station, however, as from January 1, 2015, the data was collected from a new station. The climate stations were located approximately 800 m apart in Ultuna, a district in Uppsala. Daily data collected were temperature [°C], sunshine hours, solar radiation [MJ/m<sup>2</sup>], precipitation [mm], snow depth [cm], and snow coverage categorized as 0 (no snow), 0.33 (<50% snow covered), 0.66 (>50% snow covered), or 1 (fully snow covered).

Data on air pollen count were obtained from the Palynological laboratory in Stockholm, Sweden. The pollen trap, located at Stockholm University, covers a radius of 70–100 km, and was the closest one to Uppsala (the distance between Stockholm and Uppsala is approximately 65 km). The pollen was collected in a Burkard Seven Day Volumetric Spore Trap, where it was captured on a sticky tape (the trap sucks in approximately 10 L of air per minute). The pollen was later analyzed and counted using a light microscope. The method used by the Palynological laboratory is standardized in Europe and in large parts of the rest of the world [55]. The reported pollen counts refer to the average pollen grains per cubic meter of air per day. Data were obtained on alder (*Alnus*), mugwort (*Artemisia*), birch (*Betula*), hazel (*Corylus*), grass (*Poaceae*), and oak (*Quercus*).

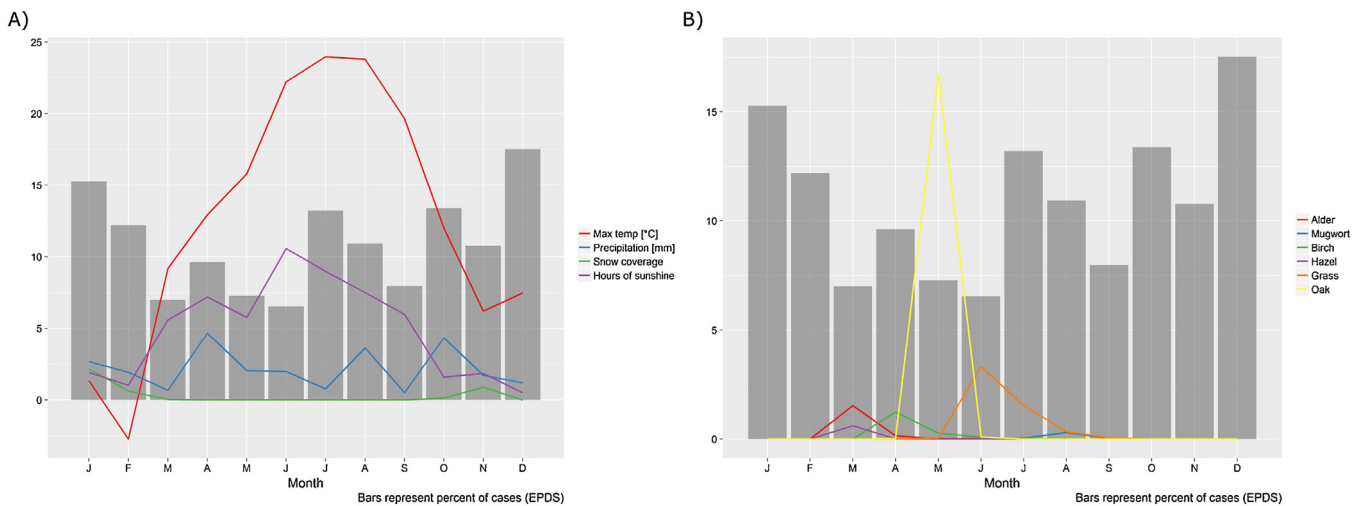
Using moving averages, variables were created with information on exposure 1, 7, and 42 days prior to the assessment of depressive symptoms. This enabled investigation of duration effects of meteorological parameters and pollen on depressive symptoms. During days with reported technical issues (temperature, n = 1; solar radiance, n = 1; sunshine, n = 4; and pollen, n = 10), these cells were left blank and imputations were implicitly made when conducting the moving averages for one week and six weeks prior to the assessment by adjusting the denominator.



**Fig. 1.** (a) Daily measurements of meteorological parameters for the whole study period of BASIC (2010–2015), in comparison with percentage women with depressive symptoms (EPDS  $\geq 13$ ) at gestational week 32. (b) Daily measurements of air pollen count (average grains/m<sup>3</sup> air/day) for the whole study period of BASIC (2010–2015), in comparison with percentage women with depressive symptoms (EPDS  $\geq 13$ ) at gestational week 32. The birch values have been divided by 100, the other pollen types by 10.



**Fig. 2.** (a) Daily measurements of meteorological parameters for the whole study period of BASIC (2010–2015), in comparison with percentage women with depressive symptoms (EPDS  $\geq 12$ ) at 6 weeks postpartum. (b) Daily measurements of air pollen count (average grains/m<sup>3</sup> air/day) for the whole study period of BASIC (2010–2015), in comparison with percentage women with depressive symptoms (EPDS  $\geq 12$ ) at 6 weeks postpartum. The birch values have been divided by 100, the other pollen types by 10.



**Fig. 3.** (a) Daily measurements of meteorological parameters in comparison with percentage women with depressive symptoms (EPDS  $\geq 12$ ) at 6 weeks postpartum in UPPSAT, by month of the year. (b) Daily measurements of air pollen count (average grains/m<sup>3</sup> air/day) in comparison with percentage women with depressive symptoms (EPDS  $\geq 12$ ) at 6 weeks postpartum in UPPSAT. The birch values have been divided by 100, the other pollen types by 10.

## 2.6. Ethical considerations

Both study protocols have been approved by the Regional Ethical Review Board of Uppsala, Sweden (BASIC, Dnr 2009/171; UPPSAT Dnr 2006/150).

## 2.7. Statistical analyses

### 2.7.1. Spearman correlation

A Spearman correlation test was performed, as correlations were suspected between the different meteorological parameters, as well as the different types of pollen. As there was a strong correlation ( $\pm 0.75$ – $1.00$ ) between average temperature and maximum temperature, snow depth and snow coverage, and sunshine hours and global radiation, only the following variables were included in the final analysis; maximum temperature, precipitation, snow coverage, sunshine hours, and all types of pollen.

### 2.7.2. Regression models and Bonferroni correction

Due to the large amount of data at EPDS = zero and the long right tail, linear regression did not give well-fitting residuals. Negative binomial regression, which was better suited to the distribution of the EPDS was used for the continuous outcomes. Three models were run, for each individual exposure:

- i) unadjusted
- ii) adjusted for season
- iii) adjusted for season and interaction term between season  $\times$  respective meteorological parameter/pollen

Season was divided as follows; December–February, March–May, June–August, and September–November. The statistical significance was set at a  $p$ -value of  $<0.05$ . Bonferroni correction was applied on the  $p$ -values for all models.

In sensitivity analyses, the same models were run using logistic regression with the dichotomized EPDS, as well as DSRS as outcome. All models were first run in the BASIC samples, and to investigate if the results found in BASIC could be validated, all models were run using the EPDS assessment at 6 weeks postpartum from the UPPSAT study. Furthermore, the analyses were conducted only including women with previous depression. As a last step, the analyses were also conducted solely including women who had reported allergies.

The statistical analyses were carried out in SPSS version 24 (IBM Corp, Armonk, NY).

## 3. Results

### 3.1. Participation rate

The BASIC study has a participation rate of approximately 21%, and the UPPSAT study 60%.

### 3.2. Background characteristics

The background characteristics of the women are reported in [Table 1](#). Flowcharts of the participants from the BASIC and UPPSAT studies can be seen in [Supplementary Fig. 1](#) and [2](#), respectively. Briefly, the two study populations were similar in characteristics but the participants in the BASIC study were more highly educated, they were more likely to non-exclusively breastfeed, to have an elective cesarean section, to report previous depression, to have higher EPDS score, and their children were more likely to be admitted to the neonatal intensive care unit. These differences were statistically significant. The prevalence of depressive symptoms using the EPDS

was 9.4% at gestational week 32 (BASIC), as well as 13.1% (BASIC) and 11.1% (UPPSAT) at 6 weeks postpartum. According to the DSRS, 5.1% of the women had depressive symptoms 6 weeks postpartum (BASIC).

After Bonferroni correction, none of the meteorological parameters nor air pollen counts were significantly associated with neither EPDS score ([Tables 2–4](#)), presence of depressive symptoms using EPDS cut-offs ([Supplementary Tables 1, 2, and 4](#)), nor DSRS ([Supplementary Table 3](#)). Graphs of the meteorological parameters and air pollen counts in relation to percentage women with depressive symptoms for all years are illustrated in [Figs. 1–3](#). Graphs illustrating the collapsed data from 2010 to 2015 in BASIC are found in [Supplementary Figs. 3–6](#). Prior to the Bonferroni correction, an increased concentration of mugwort pollen, both one week ( $p=0.034$ ) and six weeks ( $p=0.031$ ) was associated with a in pregnancy, both before and after adjustment for season ([Table 2](#)).

In the sensitivity analyses, mean air pollen count of grass seven days prior to the EPDS assessment in pregnancy was positively associated with depressive symptoms (odds ratio (OR) = 1.017; 95% confidence interval (CI): 1.004–1.029) (data not shown). Conversely, the mean number of sunshine hours six weeks before the EPDS assessment in the postpartum group (BASIC) was negatively associated with depressive symptoms (OR = 0.955; 95% CI: 0.920–0.992) (data not shown). After Bonferroni correction, these associations were no longer significant.

## 4. Discussion

The aim of this study was to examine if meteorological parameters and air pollen counts are associated with self-reported peripartum depressive symptoms in Uppsala, Sweden. Two study populations were used in order to validate results within the same study. This study found no association between maximum temperature, precipitation, snow coverage, sunshine hours or air pollen counts and self-reported peripartum depressive symptoms.

These results support the negative findings of a study investigating the association between postpartum depressive symptoms and length of daylight in more than 67,000 women [39]. Conversely, in Finland, the dark time period has been associated with increased odds of postpartum depression [38]. The study was, however, limited by a small sample size and addressed mostly season. Furthermore, associations were only found when assessing depressive symptoms at 2–7 days after childbirth, where postpartum blues could have been misclassified as postpartum depression [38]. Similarly, a very small sample size limits the strength of the association found between antenatal depressive symptoms and seasonally longer nights [40]. In comparison with the above-mentioned studies, the current study has the advantage of using daily and local measurements of sunshine hours.

When investigating the association between meteorological parameters or air pollen counts and depressive symptoms, numerous combinations of parameters and models can be constructed. Relating back to the study that created ‘climatic factors’ [16], it is tempting to do so, as multiple aspects of weather could interplay in the development of depressive symptoms. Nevertheless, a decision was made to not combine parameters or categorize exposure variables in order to get a clearer picture on the impact of the individual meteorological parameters, and to not lose information. The main outcome variable was, nevertheless, tested both as continuous and dichotomized in order to evaluate both the impact on any potential sub-clinical depression and validated cut-offs.

Even before Bonferroni correction, there were limited significant results. After Bonferroni correction, there were no associations between depressive symptoms and exposure to pollen. The inverse association between mugwort pollen and presence of depressive symptoms at gestational week 32, prior to the Bonferroni correction, does contradict our initial hypothesis, but earlier studies on animals

are in line with our results. A recent study has reported antidepressant effects of mugwort in mice [56]. It should of course be noted that this study examined extracted compounds from the mugwort tree (carnosol, ursolic acid, and oleanolic acid) and not pollen. The authors discussed that these three compounds might exert their antidepressant effect through the GABAergic system. Despite differences in the methodology of the studies, it is interesting that this specific tree has previously been studied in association with depression, and results of both studies point in the same direction. The results of this study are not in line with previous studies conducted on risk of suicide [25,26]. Apart from suicide and depressive symptoms being different outcomes, albeit associated, the discrepancies could derive from differences in methodology. The current study used continuous data and the above-mentioned studies categorical. Nonetheless, categorical data has also been reported not associated with the outcome [57]. As previously mentioned, the hypothesis on an association between pollen exposure and depressive symptoms is based on the knowledge that pollen, in individuals with allergic rhinitis, causes an immune response. In the BASIC sample, 22.2% of the women reported that they had allergies. However, the phrasing of the question did not separate different types of allergies and it is therefore not possible to know the true percentage of women sensitive to pollen exposure. In addition, there were no data on severity of symptoms. The results remained the same in a sub-analysis only including women with self-reported allergies (data not shown). In the UPPSAT study, there was no question on allergies.

The etiology of peripartum depression is multi-factorial [58]. The discrepancies in findings between the current study and previous research on psychiatric disorders could be explained by the unique state of a pregnancy, with vast alterations in hormonal levels [59] and inflammatory markers [60,61]. It is not unlikely that such events have a larger impact on the development of peripartum depressive symptoms than meteorological parameters and pollen. Both antenatal and postpartum depressive symptoms have been associated levels of inflammatory markers in late pregnancy in the BASIC population [62,63].

This is an extensive study that includes data from six years, which has been utilized in such a way that allows for investigation of duration effect. Furthermore, the current study adds new knowledge to the field of peripartum depressive symptoms, by investigating the association with multiple meteorological parameters, as well as air pollen counts. In addition, by including data on participants from both BASIC and UPPSAT, the generated results could be validated within the same study. The weather stations were local, or in the case of the pollen trap, the closest one, which reduced the atmospheric diversity of the exposure on the participants. Lastly, it is a strength that both the EPDS and the DSRs were used. The EPDS is a widely used instrument, both in research and clinical practice, and has been reported to be a good marker of psychiatric morbidity [64].

The low participation rate of the BASIC study limits the generalizability of the results. When comparing with the general population, women participating in the BASIC study have higher educational attainment, are older, have more history of previous depression, and they are more likely to be primiparous. Nevertheless, the UPPSAT study had a participation rate of 60%, and the women participating in the study were similar to the general population, although they were more likely to be primiparous. A complementary clinical evaluation would have been valuable to further assess the depressive symptoms of the participants.

## 5. Conclusion

Meteorological parameters and air pollen count are not associated with self-reported peripartum depressive symptoms in Uppsala, Sweden.

## Disclosure of interest

The authors declare that they have no competing interests.

## Acknowledgements

This study was funded by the Swedish Research Council to A.S. (Project No. 523–2014–2342), the Swedish Society of Medicine to A.S. and S.S. (Project No. SLS-250581), the Marianne and Marcus Wallenberg Foundation to A.S. (Project No. MMW2011.0115), the Åke-Wiberg Foundation to A.S., the Söderström-Köningska Foundation to A.S. and S.S., Allmänna BbBs Minnesfond to A.S., and the Gillbergska Foundation to A.S. The funding sources had no involvement in the study design, the collection, analysis, and interpretation of data, the writing of the report, or the decision to submit the article for publication. The authors would like to thank all women who participated in this study. We would also like to thank Per Nyman at the Swedish University of Agricultural Sciences (SLU) for providing data on meteorological parameters, as well as Kerstin Alm Kübler, previously at the Palynological Laboratory in Stockholm, for help with the acquisition of pollen data. Lastly, we would like to express our gratitude towards Marianne Kördel, Natasa Kollia, and Pepita Knuutila for their valuable help in the administration of this study.

## Appendix A. Supplementary data

Supplementary material related to this article can be found, in the online version, at doi:<https://doi.org/10.1016/j.eurpsy.2018.06.010>.

## References

- [1] Eagles J.M.. Light therapy and the management of winter depression. *Adv Psychiatr Treat* 2004;10:233.
- [2] Rosenthal NE, Sack DA, Gillin JC, Lewy AJ, Goodwin FK, Davenport Y, et al. Seasonal affective disorder. A description of the syndrome and preliminary findings with light therapy. *Arch Gen Psychiatry* 1984;41:72–80.
- [3] Papadopoulos FC, Frangakis CE, Skalkidou A, Petridou E, Stevens RG, Trichopoulos D. Exploring lag and duration effect of sunshine in triggering suicide. *J Affect Disord* 2005;88:287–97.
- [4] Petridou E, Papadopoulos FC, Frangakis CE, Skalkidou A, Trichopoulos D. A role of sunshine in the triggering of suicide. *Epidemiol (Cambridge, Mass)* 2002;13:106–9.
- [5] Grjibovski AM, Kozhakhmetova G, Kosbayeva A, Menne B. Associations between air temperature and daily suicide counts in Astana, Kazakhstan. *Medicina (Kaunas)* 2013;49:379–85.
- [6] Page LA, Hajat S, Kovats RS. Relationship between daily suicide counts and temperature in England and Wales. *Br J Psychiatry* 2007;191:106–12.
- [7] Jee HJ, Cho CH, Lee YJ, Choi N, An H, Lee HJ. Solar radiation increases suicide rate after adjusting for other climate factors in South Korea. *Acta Psychiatr Scand* 2017;135:219–27.
- [8] Bando DH, Teng CT, Volpe FM, Masi E, Pereira LA, Braga AL. Suicide and meteorological factors in Sao Paulo, Brazil, 1996–2011: a time series analysis. *Revista brasileira de psiquiatria (Sao Paulo, Brazil : 1999)* 2017;39:220–7.
- [9] Vyssoki B, Kapusta ND, Praszak-Rieder N, Dorffner G, Willeit M. Direct effect of sunshine on suicide. *JAMA Psychiatry* 2014;71:1231–7.
- [10] Kadotani H, Nagai Y, Sozu T. Railway suicide attempts are associated with amount of sunlight in recent days. *J Affect Disord* 2014;152–154:162–8.
- [11] Holopainen J, Helama S, Partonen T. Does diurnal temperature range influence seasonal suicide mortality? Assessment of daily data of the Helsinki metropolitan area from 1973 to 2010. *Int J Biometeorol* 2014;58:1039–45.
- [12] Hiltunen L, Haukka J, Ruuhela R, Suominen K, Partonen T. Local daily temperatures, thermal seasons, and suicide rates in Finland from 1974 to 2010. *Environ Health Prev Med* 2014;19:286–94.
- [13] Dixon PG, Sinyor M, Schaffer A, Levitt A, Haney CR, Ellis KN, et al. Association of weekly suicide rates with temperature anomalies in two different climate types. *Int J Environ Res Public Health* 2014;11:11627–44.
- [14] Ajdacic-Gross V, Lauber C, Sansossio R, Bopp M, Eich D, Gostynski M, et al. Seasonal associations between weather conditions and suicide—evidence against a classic hypothesis. *Am J Epidemiol* 2007;165:561–9.
- [15] Salib E, Gray N. Weather conditions and fatal self-harm in North Cheshire 1989–1993. *Br J Psychiatry* 1997;171:473–7.
- [16] Radau J, Pertusa A, Cardoner N. Climatic relationships with specific clinical subtypes of depression. *Psychiatry Res* 2010;175:217–20.



- [17] Huibers MJH, de Graaf LE, FPML Peeters, Arntz A. Does the weather make us sad? Meteorological determinants of mood and depression in the general population. *Psychiatry Res* 2010;180:143–6.
- [18] McWilliams S, Kinsella A, O'Callaghan E. Daily weather variables and affective disorder admissions to psychiatric hospitals. *Int J Biometeorol* 2014;58:2045–57.
- [19] Molin J, Møllerup E, Bolwig T, Scheike T, Dam H. The influence of climate on development of winter depression. *J Affect Disord* 1996;37:151–5.
- [20] Christensen EM, Larsen JK, Gjerris A, Peacock L, Jacobi M, Hassenbalch E. Climatic factors and bipolar affective disorder. *Nordic J Psychiatry* 2008;62:55–8.
- [21] Salib E, Sharp N. Relative humidity and affective disorders. *Int J Psychiatry Clin Pract* 2002;6:147–53.
- [22] Amr M, Volpe FM. Seasonal influences on admissions for mood disorders and schizophrenia in a teaching psychiatric hospital in Egypt. *J Affect Disord* 2012;137:56–60.
- [23] Beecher ME, Eggett D, Erekson D, Rees LB, Bingham J, Klundt J, et al. Sunshine on my shoulders: weather, pollution, and emotional distress. *J Affect Disord* 2016;205:234–8.
- [24] Hawley DJ, Wolfe F. Effect of light and season on pain and depression in subjects with rheumatic disorders. *Pain* 1994;59:227–34.
- [25] Postolache TT, Stiller JW, Herrell R, Goldstein MA, Shreeram SS, Zembrak R, et al. Tree pollen peaks are associated with increased nonviolent suicide in women. *Mol Psychiatry* 2005;10:232–5.
- [26] Qin P, Waltoft BL, Mortensen PB, Postolache TT. Suicide risk in relation to air pollen counts: a study based on data from Danish registers. *BMJ Open* 2013;3:e002462.
- [27] Postolache TT, Komarow H, Tonelli LH. Allergy: a risk factor for suicide? *Curr Treat Options Neurol* 2008;10:363–76.
- [28] American Psychiatric Association. Diagnostic and statistical manual of mental disorders (DSM5). 5th ed. Washington, DC: American Psychiatric Press; 2013.
- [29] O'Hara MW, Wisner KL. Perinatal mental illness: definition, description and aetiology. *Best Pract Res Clin Obstet Gynaecol* 2014;28:3–12.
- [30] Woody CA, Ferrari AJ, Siskind DJ, Whiteford HA, Harris MG. A systematic review and meta-regression of the prevalence and incidence of perinatal depression. *J Affect Disord* 2017;219:86–92.
- [31] Biaggi A, Conroy S, Pawlby S, Pariante CM. Identifying the women at risk of antenatal anxiety and depression: a systematic review. *J Affect Disord* 2016;191:62–77.
- [32] O'Hara MW. Postpartum depression: what we know. *J Clin Psychol* 2009;65:1258–69.
- [33] Pearlstein T, Howard M, Salisbury A, Zlotnick C. Postpartum depression. *Am J Obstet Gynecol* 2009;200:357–64.
- [34] Grote NK, Bridge JA, Gavin AR, Melville JL, Iyengar S, Katon WJ. A meta-analysis of depression during pregnancy and the risk of preterm birth, low birth weight, and intrauterine growth restriction. *Arch Gen Psychiatry* 2010;67:1012–24.
- [35] Stein A, Pearson RM, Goodman SH, Rapa E, Rahman A, McCallum M, et al. Effects of perinatal mental disorders on the fetus and child. *Lancet (London, England)* 2014;384:1800–19.
- [36] Sutter-Dallay AL, Murray L, Dequae-Merchadou L, Glatigny-Dallay E, Bourgeois ML, Verdoux H. A prospective longitudinal study of the impact of early postnatal vs. chronic maternal depressive symptoms on child development. *Eur Psychiatry* 2011;26:484–9.
- [37] Corral M, Wardrop A, Zhang HB. Seasonality of symptoms in women with postpartum depression. *Arch Women's Mental Health* 2007;10:9–13.
- [38] Hiltunen P, Jokelainen J, Ebeling H, Szajnborg N, Moilanen I. Seasonal variation in postnatal depression. *J Affect Disord* 2004;78:111–8.
- [39] Jewell JS, Dunn AL, Bondy J, Leiferman J. Prevalence of self-reported postpartum depression specific to season and latitude of birth: evaluating the PRAMS data. *Maternal Child Health J* 2010;14:261–7.
- [40] Meliska CJ, Martínez LF, López AM, Sorenson DL, Nowakowski S, Kripke DF, et al. Antepartum depression severity is increased during seasonally longer nights: relationship to melatonin and cortisol timing and quantity. *Chronobiol Int* 2013;30:1160–73.
- [41] Yang S-N, Shen L-J, Ping T, Wang Y-C, Chien C-W. The delivery mode and seasonal variation are associated with the development of postpartum depression. *J Affect Disord* 2011;132:158–64.
- [42] Panthangi V, West P, Savoy-Moore RT, Geeta M, Reickert E. Is seasonal variation another risk factor for postpartum depression? *J Am Board Fam Med* 2009;22:492–7.
- [43] Sit D, Seltman H, Wisner KL. Seasonal effects on depression risk and suicidal symptoms in postpartum women. *Depress Anxiety* 2011;28:400–5.
- [44] Sylvén SM, Papadopoulos FC, Olovsson M, Ekselius L, Poromaa IS, Skalkidou A. Seasonality patterns in postpartum depression. *Am J Obstet Gynecol* 2011;204(413):e1–6.
- [45] Weobong B, Ten Asbroek AH, Soremekun S, Danso S, Owusu-Agyei S, Prince M, et al. Determinants of postnatal depression in rural Ghana: findings from the don population based cohort study. *Depress Anxiety* 2015;32:108–19.
- [46] Henriksson HE, Sylvén SM, Kallak TK, Papadopoulos FC, Skalkidou A. Seasonal patterns in self-reported peripartum depressive symptoms. *Eur Psychiatry* 2017;43:99–108.
- [47] Hellgren C, Åkerud H, Skalkidou A, Sundström-Poromaa I. Cortisol awakening response in late pregnancy in women with previous or ongoing depression. *Psychoneuroendocrinology* 2013;38:3150–4.
- [48] Sylvén SM, Thomopoulos TP, Kollia N, Jonsson M, Skalkidou A. Correlates of postpartum depression in first time mothers without previous psychiatric contact. *Eur Psychiatry* 2017;40:4–12.
- [49] Cato K, Sylvén SM, Skalkidou A, Rubertsson C. Experience of the first breastfeeding session in association with the use of the hands-on approach by healthcare professionals: a population-based Swedish study. *Breastfeed Med* 2014;9:294–300.
- [50] Cox JL, Holden JM, Sagovsky R. Detection of postnatal depression. Development of the 10-item Edinburgh postnatal depression scale. *Br J Psychiatry* 1987;150:782–6.
- [51] Rubertsson C, Börjesson K, Berglund A, Josefsson A, Sydsjö G. The Swedish validation of Edinburgh postnatal depression scale (EPDS) during pregnancy. *Nordic J Psychiatry* 2011;65:414–8.
- [52] Wickberg B, Hwang CP. The Edinburgh postnatal depression scale: validation on a Swedish community sample. *Acta Psychiatr Scand* 1996;94:181–4.
- [53] Svanborg P, Ekselius L. Self-assessment of DSM-IV criteria for major depression in psychiatric out- and inpatients. *Nordic J Psychiatry* 2003;57:291–6.
- [54] Rosengren A, Orth-Gomér K, Wedel H, Wilhelmsen L. Stressful life events, social support, and mortality in men born in 1933. *BMJ (Clinical research ed)* 1993;307:1102–5.
- [55] Naturhistoriska riksmuseet. Pollenrapporten.
- [56] Khan I, Karim N, Ahmad W, Abdelhalim A, Chebib M. GABA-a receptor modulation and anticonvulsant, anxiolytic, and antidepressant activities of constituents from *Artemisia indica* linn. *Evid Based Complement Alternat Med* 2016(2016):1215393.
- [57] Woo JM, Gibbons RD, Rogers CA, Qin P, Kim JB, Roberts DW, et al. Pollen counts and suicide rates. Association not replicated. *Acta Psychiatr Scand* 2012;125:168–75.
- [58] Schiller CE, Meltzer-Brody S, Rubinow DR. The role of reproductive hormones in postpartum depression. *CNS Spectrums* 2015;20:48–59.
- [59] Chrousos GP, Torpy DJ, Gold PW. Interactions between the hypothalamic-pituitary-adrenal axis and the female reproductive system: clinical implications. *Ann Intern Med* 1998;129:229–40.
- [60] Luppi P, Haluszcak C, Trucco M, Deloia JA. Normal pregnancy is associated with peripheral leukocyte activation. *Am J Reprod Immunol* 2002;47:72–81.
- [61] Kraus TA, Sperling RS, Engel SM, Lo Y, Kellerman L, Singh T, et al. Peripheral blood cytokine profiling during pregnancy and post-partum periods. *Am J Reprod Immunol* 2010;64:411–26.
- [62] Edvinsson A, Brann E, Hellgren C, Freyhult E, White R, Kamali-Moghaddam M, et al. Lower inflammatory markers in women with antenatal depression brings the M1/M2 balance into focus from a new direction. *Psychoneuroendocrinology* 2017;80:15–25.
- [63] Brann E, Papadopoulos F, Fransson E, White R, Edvinsson A, Hellgren C, et al. Inflammatory markers in late pregnancy in association with postpartum depression—a nested case-control study. *Psychoneuroendocrinology* 2017;79:146–59.
- [64] Wisner KL, Sit DK, McShea MC, Rizzo DM, Zoretich RA, Hughes CL, et al. Onset timing, thoughts of self-harm, and diagnoses in postpartum women with screen-positive depression findings. *JAMA Psychiatry* 2013;70:490–8.