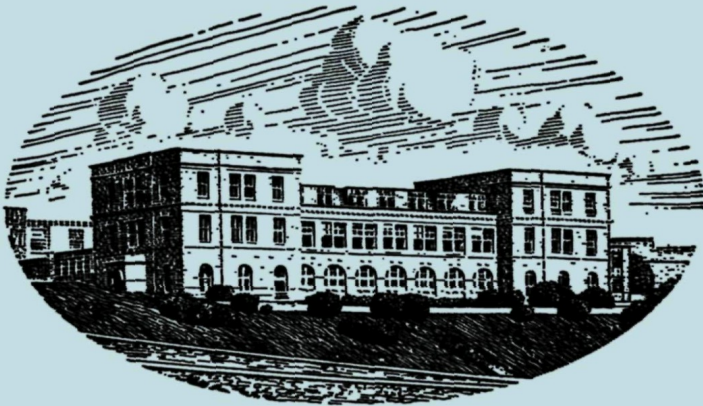


**JOURNAL OF THE
MARINE BIOLOGICAL ASSOCIATION
OF THE UNITED KINGDOM**



THE PLYMOUTH LABORATORY

VOLUME 59, No. 3
(issued August 1979)

JMBAAK 59 (No. 3) 535-809 (1979) 0025-3154

CAMBRIDGE UNIVERSITY PRESS

1979

THE MARINE BIOLOGICAL ASSOCIATION OF THE UNITED KINGDOM

PATRON

H.R.H. THE PRINCE PHILIP DUKE OF EDINBURGH, F.R.S.

OFFICERS AND COUNCIL

President: Prof. J. Z. YOUNG, D.Sc., F.R.S.

Vice-Presidents

Prof. Sir ALISTER C. HARDY, Kt., D.Sc., F.R.S.
Sir C. MAURICE YONGE, Kt., C.B.E., D.Sc., F.R.S.
Rear Admiral Sir EDMUND G. IRVING, K.B.E., C.B.
Sir FREDERICK S. RUSSELL, Kt., C.B.E., D.S.C.,
D.F.C., D.Sc., LL.D., F.R.S.

Sir EDWARD R. CHADWYCK-HEALEY, Bt., M.C.
Sir J. ERIC SMITH, Kt., C.B.E., Sc.D., F.R.S.
Sir ALAN L. HODGKIN, O.M., K.B.E., Sc.D., F.R.S.

Honorary Members

Sir GEORGE E. R. DEACON, Kt., C.B.E., D.Sc.,
F.R.S.
Prof. Sir ALISTER C. HARDY, Kt., D.Sc., F.R.S.

Dr A. C. REDFIELD
Sir C. MAURICE YONGE, Kt., C.B.E., D.Sc., F.R.S.

COUNCIL

Elected Members

J. H. S. BLAXTER, D.Sc.
Prof. K. F. BOWDEN, D.Sc.
Prof. H. CHARNOCK, F.R.S.
Prof. R. B. CLARK, D.Sc.
Prof. J. M. DODD, D.Sc., F.R.S.
Sir JOHN A. B. GRAY, Kt., M.B., Sc.D., F.R.S.
R. H. HEDLEY, D.Sc.
Prof. G. J. HILLS, D.Sc.

Sir ALAN L. HODGKIN, O.M., K.B.E., Sc.D., F.R.S.
Sir PETER KENT, Kt., D.Sc., F.G.S., F.R.S.
A. D. MCINTYRE, D.Sc.
Prof. E. NAYLOR, D.Sc.
Prof. D. NICHOLS, D.Phil.
Prof. C. G. PHILLIPS, D.M., F.R.C.P., F.R.S.
Prof. W. D. P. STEWART, D.Sc., F.R.S.

Governors

J. G. KELSEY (Ministry of Agriculture, Fisheries
and Food)
The Worshipful Company of Fishmongers:
Sir EDWARD R. CHADWYCK-HEALEY, Bt., M.C.
Col. Sir JOHN G. CAREW POLE, Bt., D.S.O., T.D.
B. M. TILL, T.D.
H. C. BENNET-CLARK, Ph.D.
(Oxford University)

M. J. WELLS, Sc.D. (Cambridge University)
Prof. G. P. WELLS, Sc.D., F.R.S. (Zoological Society)
Prof. SIR BERNARD KATZ, Kt., M.D., D.Sc., F.R.S.
(Royal Society)
Prof. G. E. FOGG, Sc.D., F.R.S.
(British Association)
Prof. R. D. KEYNES, Sc.D., F.R.S.
(Physiological Society)

Hon. Treasurer: B. M. TILL, T.D., West House, Piddletrenthide, Dorchester, Dorset, DT2 7QX
Secretary: E. J. DENTON, C.B.E., Sc.D., F.R.S., The Laboratory, Citadel Hill, Plymouth, PL1 2PB

SCIENTIFIC STAFF

Director: E. J. DENTON, C.B.E., Sc.D., F.R.S.

P. G. CORBIN, B.A. (*Zoologist*)
N. A. HOLME, Sc.D., M.A. (*Zoologist*)
G. R. FORSTER, B.Sc. (*Zoologist*)
E. D. S. CORNER, M.Sc., Ph.D. (*Biochemist*)
A. J. SOUTHWARD, D.Sc., Ph.D. (*Zoologist*)
E. I. BUTLER, C.Chem., F.R.I.C. (*Chemist*)
J. V. HOWARTH, B.Sc., Ph.D. (*Physiologist*)
Q. BONE, M.A., D.Phil. (*Zoologist*)
G. T. BOALCH, B.Sc., Ph.D. (*Phycologist*)
G. W. BRYAN, B.Sc., Ph.D. (*Zoologist*)
A. G. DAVIES, B.Sc., Ph.D. (*Physical Chemist*)
P. R. DANDO, B.Sc., Ph.D. (*Biochemist*)
P. E. GIBBS, B.Sc., M.A., Ph.D. (*Zoologist*)

B. L. ROBERTS, M.A., Ph.D. (*Physiologist*)
J. C. GREEN, B.Sc., Ph.D. (*Phycologist*)
D. K. GRIFFITHS, M.Sc. (*Physical Oceanographer*)
G. W. POTTS, B.Sc., Ph.D. (*Zoologist*)
J. B. GILPIN-BROWN, B.Sc., Ph.D. (*Bursar and
Zoologist*)
H. MEVES, M.D. (*Physiologist*)
M. WHITFIELD, B.Sc., Ph.D. (*Physical Chemist*)
M. R. CLARKE, D.Sc., Ph.D. (*Zoologist*)
R. P. HARRIS, B.Sc., Ph.D. (*Zoologist*)
P. M. HOLLIGAN, M.A., Ph.D. (*Biochemist*)
L. MADDOCK, B.Sc., Ph.D. (*Zoologist*)

J. H. WICKSTEAD, D.Sc., Ph.D., F.I.Biol., Ministry of Overseas Development (*Zoologist*)
R. D. PINGREE, B.Sc., Dip.Ed., Ph.D., Institute of Oceanographic Sciences (*Oceanographer*)

August 1979

INSTRUCTIONS FOR THE PREPARATION OF MANUSCRIPTS

TITLE

The title of the paper should be kept as short as possible.

The name of the author at the beginning of the paper should be followed only by senior qualifications.

TEXT

Two copies of the typescript should be provided, double spaced throughout, on one side of quarto or A4 paper. Tables and legends for illustrations should be typed separately at the end of the manuscript. All pages should be numbered serially and fastened together securely. Words to be printed in italic should be underlined. The first mention of Latin names of species should be followed by the authority except where reference is made to a work in which the authority appears (e.g. *Plymouth Marine Fauna*).

All linear measurements and weights should be in the metric scale.

For symbols and abbreviations, the recommendations of the Royal Society (1951) are followed.

TABLES

Tables should be set out on separate sheets numbered in Arabic numerals, and given a concise heading.

FIGURES

Figures should be in black ink. It is important to make the lines sufficiently black.

All illustrations will be reduced to a size not exceeding 20 × 14 cm. No illustrations should be submitted which will not fit into an envelope 35 × 47 cm (12 × 16 inches).

Lettering, numerals, etc. should be marked clearly in pencil and the exact position in which they are to be inserted should be indicated. Symbols on the figure should be kept to a minimum and details given in the legend.

Axes and graduation marks on graphs must be inked in. The lines on graph paper are not normally reproduced, and should be blue or faint grey.

Legends for figures must be typed all together on a separate sheet, and not inserted on the actual illustrations.

Figures are numbered in Arabic numerals, and referred to in the text as 'Fig. 1', etc.

All line-drawings are printed as figures, as well as photographs for which fine detail is not required.

PLATES

Photographs should be on smooth-surfaced paper, semi-matt or glossy. The edges of the photograph must be trimmed square. It is important that the background in the photograph be of a uniform tone and free from blemishes.

Divisions of plates, or separate figures on one plate, are indicated by capital letters.

SUMMARY

Each paper must be accompanied by an informative Summary, giving the main results of the work published.

REFERENCES

References are listed alphabetically at the end of the paper. The full title of the paper must be given. Titles of papers, but not of books, are decapitalized. Titles of Journals are given in full. Where a volume appears in parts the part need only be specified where each has separate pagination. References to books should include the publisher. Citations in text to be given by author's name followed by date in brackets.

Examples:

GOLDBERG, E. D., 1965. Minor elements in sea water. In *Chemical Oceanography*, vol. 1 (ed. J. P. Riley and G. Skirrow), pp. 163-196. New York: Academic Press.

MARSHALL, S. M., NICHOLLS, A. G. & ORR, A. P., 1939. On the growth and feeding of young herring in the Clyde. *Journal of the Marine Biological Association of the United Kingdom*, **23**, 427-455.

RUSSELL, F. S. & YONGE, C. M., 1928. *The Seas*. 379 pp. London: Frederick Warne.

Authors are requested to see that their manuscripts are in finished form and completely ready for publication so that corrections may be reduced to a minimum, and these are confined as far as possible to the first proof. If the cost for correction exceeds a reasonable figure, the author is liable to be charged the full extent of the excess.

SUBSCRIPTIONS

Journal of the Marine Biological Association of the United Kingdom (ISSN:0025-3154) is published quarterly.

Single parts cost £16.00 net (US \$40.00 in the U.S.A. and Canada) plus postage.

Four parts form a volume. The 1979 subscription price of a volume (which includes postage) is £54.00 net (US \$132.50 in the U.S.A. and Canada).

Second class postage paid at New York, N.Y. Postmaster: send address changes in USA and Canada to Cambridge University Press, 32 East 57th Street, New York, N.Y. 10022. Claims for missing issues will be considered only if made immediately upon receipt of the subsequent issue. Copies of back numbers are available from Cambridge University Press.

© The Marine Biological Association of the UK 1979

PERMISSIONS

Copying

This journal is registered with the Copyright Clearance Center, New York. Organizations in the U.S.A. who are also registered with C.C.C. may therefore copy material (beyond the limits permitted by sections 107 and 108 of U.S. © law) subject to payment to C.C.C. of the per-copy fee indicated in the code on the first page of the article. This consent does not extend to multiple copying for promotional or commercial purposes.

ISI Tear Service, 325 Chestnut Street, Philadelphia, Pennsylvania 19106, U.S.A., is authorized to supply single copies of separate articles for private use only.

For all other use, permission should be sought from the Cambridge or New York offices of the Cambridge University Press.