

ARTICLE

# Undesired monetary policy effects in a bubbly world<sup>†</sup>

Giuseppe Ciccarone<sup>1</sup>, Francesco Giuli<sup>2</sup>, Enrico Marchetti<sup>3</sup>, Valeria Patella<sup>1</sup>, and Massimiliano Tancioni<sup>1</sup>

<sup>1</sup>Sapienza University Rome, Rome, Italy

<sup>2</sup>Roma Tre University, Rome, Italy

<sup>3</sup>Parthenope University of Naples, Napoli, Italy

**Corresponding author:** Valeria Patella; Email: [valeria.patella@uniroma1.it](mailto:valeria.patella@uniroma1.it)

## Abstract

Stock market bubbles arise as a joint monetary and financial phenomenon. We assess the potential of monetary policy in mitigating the onset of bubbles by means of a Markov-switching Bayesian Vector Autoregression model estimated on US 1960–2019 data. Bubbles are detected and dated from the regime-specific interplay among asset prices, fundamental values, and monetary policy shocks. We rationalize the empirical evidence with an Overlapping Generations model, able to generate a bubbly scenario with shifts in monetary policy, and where agents form beliefs over transition dynamics. By matching the VAR impulse responses, we find that procyclicality and financial instability align with high equity premia and the presence of asset price bubbles. Monetary policy tightening, by increasing real rates, is ineffective in deflating bubble episodes.

**Keywords:** Monetary policy; Asset price bubble; Markov-switching; Monetary-financial interaction; Policy credibility

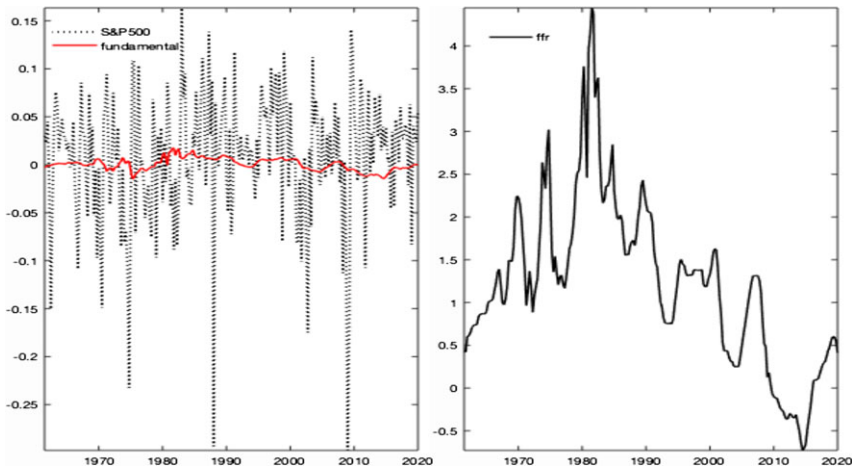
**JEL Classification:** C32; D50; E42; E52; E65; G10

## 1. Introduction

This paper examines the role of monetary policy in mitigating stock market value procyclicality and promoting macroeconomic and financial stability in an economy able to generate stock market bubbles. The literature has brought different views on this matter over the decades. For a long time, the prevailing one was that central banks should abstain from intervening in the presence of stock market bubbles [see Galí (2014)] due to possible unintended consequences and to the difficulty of detecting actual bubble episodes [Bernanke and Gertler (1999, 2001) and Greenspan (2002)]. Price and financial stability were perceived as complementary objectives, and monetary policy should have remained focused on inflation control [Taylor (2008)], intervening only eventually to “clean up the mess” left by the bubble burst. A new conventional view arose after the 2008 financial crisis, assigning central banks the role of actively acting to curb bubbles by raising interest rates [see, among others, Miao et al. (2019) and Allen et al. (2018)]. This has been labeled the “leaning against the wind” (LAW) policy.

Notwithstanding the fierce debate over the last decades, the literature on bubbles is still unable to: (i) agree on the effects of monetary policy on bubbles; (ii) assess the relevance of underlying macro-financial conditions to measure policy effectiveness on bubbles’ mitigation; and (iii) rationalize through theoretical channels the related existing evidence.<sup>1</sup>

<sup>†</sup>We thank Marco Di Pietro, Giorgio Primiceri, Giuseppe Ragusa, Lorenza Rossi, Roberto Tamborini, and Federica Vassalli for comments. Financial support from the Sapienza University of Rome, Roma Tre University, and Parthenope University of Naples is gratefully acknowledged.



**Figure 1.** Data evidence: monetary and financial facts.

*Notes:* The left plot shows the time series for the S&P500 stock price (black dotted line), and its fundamental component (red line), namely the present value of future dividend streams. The bubbly component results from the vertical distance between these two series. The right plot depicts the federal funds rate. US sample: 1960–2019.

The aim of this paper is twofold. Since part of the debate builds on an empirical dilemma, we first use a Markov-switching structural vector autoregressive (MS-VAR) to provide new evidence on the effects of monetary policy shocks on asset prices and their bubble component. We consider the joint behavior of asset price and monetary policy cycles [see Corsi and Sornette (2014), Nneji (2015), Bianchi *et al.* (2022), and Herwartz and Roestel (2022)], generating monetary-financial regimes for stock market bubbles. Depending on the regime in place, a monetary policy tightening increases stock prices and enhances procyclicality. Then, an OLG model of asset price bubbles is used to study the monetary policy transmission mechanism in an economy with nominal rigidities and collateral-constrained borrowers. Consistently with the MS-VAR, the monetary policy rule is augmented to consider reactions to bubbles and is subject to regime changes jointly with the parameter governing the bubble size. Agents form their expectations based on empirically calibrated transition probabilities. Since their beliefs affect equilibrium outcomes, we perform credibility scenarios to show that policy announcements, agents' expectations, and learning mechanisms play a crucial role in monetary policy transmission.

Our empirical and model-based findings relate to the long-debated bubble identification and measurement issue. Specifically, a financial bubble is defined as a temporary deviation of a stock price from its fundamental value, namely the present value of future dividend streams [Cochrane (2001)]. Using this convention, Figure 1 shows that most asset price fluctuations are described by periodically growing and collapsing bubble episodes, as also reported by the bubbles detection empirical literature [Driffill and Sola (1998), Hall *et al.* (1999), Brooks and Katsaris (2005), Michaelides *et al.* (2016), and Chan and Santi (2021)]. However, this definition runs into the objection raised by Fama (1991)'s joint hypothesis problem, which questions the ability to reliably detect and evaluate asset price bubbles.<sup>2</sup> We address this criticism in light of Greenwood *et al.* (2019), showing that sharp increases in asset prices, while not necessarily predicting low future returns, can predict a heightened probability of a subsequent crash. As long as specific characteristics of acute price rises can help identify future asset price bubbles, monetary authorities may use empirically relevant theoretical models to inform data-driven policy making, considering asset price bubbles within the target variables.

Under these premises, we first empirically test the low-frequency relationship among monetary policy, bubbles, and asset prices by estimating a MS-SVAR on US 1960–2019 data. We characterize

model dynamics by using data for real output, real dividends, output and commodity inflation, the federal funds rate, and the real stock price index. A standard recursive scheme identifies the model. We then select the regime-switching specification from a set of nonlinear candidate models. The optimal one, nonlinear in the interest rate and the stock price MS-VAR equations, is able to detect, date, and estimate bubbly regimes generated by the interaction of the monetary and financial dynamics.

The empirical analysis shows that recurrent regimes in the monetary and financial environment determine the effectiveness of monetary policy on asset prices. First, we extract recurrent regimes which align with historical monetary policy changes and financial deepening events. On this basis, we label the states in the stochastic model component as *variance states*, generating high, medium, and low shocks' size, and those in the systematic component as *monetary-financial states*, generating regimes of "high" and "low finance". The former emerge as periods with higher asset prices, equity returns, and real interest rates. Higher premia generate and inflate bubbles, whose size is, in turn, conditionally higher.

Second, state-dependent impulse responses show that a monetary tightening may be ineffective in reducing stock prices, further inflating their bubble component. This is more relevant in the high finance regime, when bubbles exist and are large, showing that the conditional stock price dynamics depend on the relative size of the bubble. Under the high finance regime, monetary policy tightening generates persistent increases in nominal and real interest rates, thus more sharply affecting output and real dividends. Deeper recession/deflation combines with a positive response of the stock price bubble component, which, when dominant over the fundamental component, is responsible for increased asset prices in the long run.

Equipped with this evidence, we present an OLG model incorporating financial frictions and capturing the interaction between monetary policy and bubble dynamics. We adopt a Markov-switching version of the model for bubbles presented in Ciccarone et al. (2019), which, in line with Galí (2014), Martin and Ventura (2016), is rooted in a well-established tradition of models of macroeconomic equilibria under rational bubbles. They stem from the seminal work of Tirole (1985) and Weil (1987).<sup>3</sup> Our model includes borrowers and lenders in the credit market, physical capital accumulation, and financial frictions. These credit market imperfections constrain the borrowing capacity of investors in productive capital to the collateral value they can pledge. Nominal frictions in the formation of final goods' prices are also included and provide a role for monetary policy in fixing the nominal interest rate. Furthermore, bequests from old borrowers to young borrowers make it possible to adopt a realistic numerical version of the model.

In line with the MS-VAR evidence, Markov-switching nonlinearities [Farmer et al. (2009)] affect the bubble size and the monetary policy rule.<sup>4</sup> Model calibration is obtained by matching the model- and VAR-based regime-dependent impulse responses, given the estimated transition probabilities. The calibration generates a first regime corresponding to the high finance MS-VAR state, where agents invest in bubbles, monetary policy is more persistent and less reactive to inflation but more reactive to the bubble. Under this regime, the bubble level can weaken the effect of financial frictions, allowing borrowers to demand more funds.<sup>5</sup> The calibration also generates a regime corresponding to the low finance VAR state, with no bubbles, stronger responsiveness to inflation, and lower interest rate persistence.

The model's predictions align with the empirical evidence and suggest that a monetary tightening is ineffective in reducing stock prices and inflates bubbles, especially in a high finance regime. This pro-cyclical effect operates through the increase in the real interest rate, which, in addition to the demand channel favoring future consumption, generates two different results: (i) a reduction in the demand for credit through the price channel (increased cost of borrowed funds); (ii) an increase in the aggregate savings' share allocated to non-productive assets, displacing investments from productive capital, through allocation channel. These recessive channels more than compensate for the expansionary effect of the increase in the bubble size through the collateral channel. Moreover, a bubbly regime of magnified recession/deflation is explained by

the augmented regime-dependent monetary policy rule: following the exogenous increase in the policy rate, the increase in the real rate, driven by the fall in inflation, is partially offset by the central bank's reaction to the increased bubble component. This result produces a more substantial persistence in the nominal interest rate response, higher real rates, and a more severe recession/deflation.

Agent's expectations play a crucial role in this mechanism. We assess the role of announcements' credibility by building scenarios where agents attach different probabilities to the occurrence of a regime change. We show that the credibility of announcing a different policy can significantly affect the efficacy of the current policy stance. For instance, in response to an announced shift toward a stabilizing regime (low finance) with no bubble creation, agents start disinvesting in the bubbly asset in anticipation, effectively raising the probability of switching to the no bubble scenario. Alternatively, if agents believe that the transition to a bubbly regime is more likely, a monetary shock's effect is exacerbated by deeper recession/deflation and bubble inflation.

At last, since our analysis inherently assumes full information with respect to bubble identification and timing, we build counterfactual scenarios to test our results and evaluate the possibility that agents may face uncertainty about the duration of regimes, hence about the emergence of a bubble. We model this behavior as a learning mechanism, where agents cannot precisely infer whether the bubbles are a short- or long-lasting phenomenon [Bianchi *et al.* (2022)]. Investors' learning leads to a gradual adjustment in the bubble valuation after the regime shift dates, until explaining an overreaction of the bubble to the monetary impulse once learning is complete. Hence, our results are confirmed even when agents face uncertainty about the bubble.

Moreover, if we assume no monetary policy response to the bubble, the recessionary/deflationary effects of a tightening would be dampened. Noteworthy, the theoretical framework adopted in the paper could be, in fact, envisioned as favorable to the LAW policies: we assume that the central banker has sufficient information to detect and—at least partially—evaluate a reference value (in steady state) for the bubble. Even in this favorable analytical framework, the risk of injecting additional instability into the economy would be substantial. This risk is particularly evident in the high finance regime. We interpret this result as offering an additional cautionary argument for central bank activism in contrasting (presumably) pathological bubbly episodes. Nevertheless, we acknowledge that the validity and generality of our main results are limited to the hypotheses specifying the measurability of a bubble, *i.e.*, the evaluation of the fundamental component in asset prices out of other sources of variability (*e.g.*, risk premium, noise, and market frictions).

The paper is structured as follows. In Section 2, we present the empirical strategy. We then discuss the emerging regimes and results from stochastic simulations. Section 3 describes the theoretical model, the monetary policy transmission channels, the policy credibility, and uncertainty scenarios. Section 4 concludes.

## 2. Empirical evidence

The empirical analysis considers a nonlinear multivariate time series model, specified as a MS-SVAR [Sims and Zha (2006) and Sims *et al.* (2008)], where we identify monetary policy shocks using a standard recursive strategy. Following Gali and Gambetti (2015), we derive the asset price bubble component as the difference between observed (real) stock prices and their fundamental component. The empirical novelty of our study relies on deriving bubbly regimes from the interplay between monetary and financial dynamics.<sup>6</sup> Then, by simulating a monetary policy tightening, we characterize the uneven transmission dynamics to asset prices—and to its bubble component—over different monetary-financial regimes.

**2.1. Bubble derivation**

Since Tirole (1985), a bubble is defined as the difference between the asset price and its fundamental value, as follows:

$$Q_t^B = Q_t - Q_t^F$$

where  $Q_t$  denotes the price of an infinite-lived asset,  $Q_t^B$  and  $Q_t^F$  its bubbly and fundamental components.

A model for the asset fundamental value is required to test for the existence of bubbles.<sup>7</sup> We rely on the theory of rational asset price bubbles in a discrete-time setting [Giglio et al. (2016)], such that a rational bubble is assumed to originate from the failure of the transversality condition in the rational asset pricing equation for stocks. According to this theory, a rational bubble grows at the real interest rate:

$$Q_t^B = E_t \left( \frac{Q_{t+1}^B}{R_t} \right)$$

where  $R_t$  is the real interest rate factor. This result implies that the price behavior is explosive. The bubble tests developed by Diba and Grossman (1988), Hall et al. (1999), and Phillips et al. (2015a, b) (among others), indeed, ascertain the existence of bubbles from the explosive dynamics in long time series of asset prices, by using unit root and cointegration analysis on the price-dividend relationship. Other approaches, instead, rely on the present-value literature—initiated by Campbell and Shiller (1988) and followed by many others [Balke and Wohar (2009), Al-Anaswah and Wilfling (2011), and Chan and Santi (2021)]—for which the fundamental price component is derived under risk neutrality as the present discounted value of future dividend flows [Cochrane (2001)], as follows:

$$q_t^F = K + \sum_{k=0}^{\infty} \Delta^k [(1 - \Delta)E_t d_{t+k+1} - E_t r_{t+k}]$$

where  $d_t$  is the dividend stream of the asset price,  $K = \log(1 + Q/D) - \frac{Q/D}{1+Q/D}$  is a constant (where  $Q/D$  the average price-dividend ratio), and  $\Delta < 1$  is the mean difference between the gross rate of growth of dividends and the real rate.

We follow Galí and Gambetti (2015) for the derivation of the predicted response of the fundamental component of asset prices to an exogenous shock in the monetary policy rate  $\epsilon^m$ :

$$\frac{\partial q_{t+k}^F}{\partial \epsilon_t^m} = \sum_{j=0}^{\infty} \Delta^j \left( (1 - \Delta) \frac{\partial d_{t+k+j+1}}{\partial \epsilon_t^m} - \frac{\partial r_{t+k+j}}{\partial \epsilon_t^m} \right)$$

such that the response of the bubble component,  $\partial q_t^B / \partial \epsilon_t^m$ , is obtained as the asset price residual  $q_t^B = q_t - q_t^F$ . Hence, the asset price response is defined as a weighted average of the two responses:

$$\frac{\partial q_{t+k}}{\partial \epsilon_t^m} = (1 - \gamma_{t-1}) \frac{\partial q_{t+k}^F}{\partial \epsilon_t^m} + \gamma_{t-1} \frac{\partial q_{t+k}^B}{\partial \epsilon_t^m} \tag{1}$$

where the weight  $\gamma_t \equiv Q_t^B / Q_t$  denotes the share of the bubble in the observed price. The fundamental component contributes more to the asset price response in periods where its share in asset prices is lower and vice-versa when bubbles are dominant.

A standard literature critique of the bubble theory is that risk attitudes can still explain the residual asset price component once discounted dividends are accounted for. These attitudes

are reflected in risk premia, namely the covariance term between the stochastic discount factor and future payoffs. Two features of our approach mitigate this issue. First, we focus our analysis on rational bubbles, which impose restrictions on the dynamics of the bubble component. Second, we use a less restrictive model for fundamentals by allowing the whole asset price equation to switch across regimes—hence, also its fundamental component. Therefore, as argued in Chan and Santi (2021), the latter also embodies the role of time-varying discount rates and other latent factors driving regimes in fundamentals. Consequently, the residual—namely, our measure for the bubble—is orthogonal to asset price fundamentals and to factors generating shifts in fundamentals.<sup>8</sup>

In Appendix D, we directly tackle this critique by allowing for a risk premium in the decomposition of the asset price response to the monetary shocks, as from the argument by Gali and Gambetti (2015). From this decomposition, the bubble is thus a residual risk premia component as in Jarrow and Lamichhane (2022). We show that accounting for an endogenous response of the equity premium to monetary policy shocks tends to emphasize our primary evidence favoring a positive bubble response.

## 2.2. The MS-SVAR

The MS-SVAR is estimated with Bayesian methods using quarterly US data spanning from 1960 to 2019. Six variables are included in the model: the real GDP level  $y_t$ , real dividends  $d_t$ , the GDP inflation rate  $\pi_t^y$ , the inflation rate for non-energy commodities  $\pi_t^c$ , the federal funds rate  $r_t$ , and the real S&P500 index  $q_t$ . All variables enter in logs except for inflation and policy rates. For the latter, we use the shadow interest rate by Wu and Xia (2016) over the 2009–2016 time interval, in order to consider the zero lower bound period.<sup>9</sup>

Nonlinear dynamics are introduced as Markov-switching state-dependency in the systematic and the stochastic model components. Hence, a Markov chain driving discrete coefficient states,  $\xi_t^c$ , controls the former, whereas an independent Markov chain,  $\xi_t^v$ , controls the latter, capturing discrete states' heteroskedasticity. The two chains are collected under a composite process  $\xi_t = \{\xi_t^c, \xi_t^v\}$ , evolving according to the transition matrix  $Q = Q^c \otimes Q^v = (q_{i,j})_{(i,j) \in (H \times H)} \in \mathfrak{R}^{h^2}$ , where  $q_{i,j}$  is the transition probability from state  $i$  to state  $j$  and  $H = \{1 \dots h\}$  is the set of possible regimes for  $\xi_t$ .<sup>10</sup>

The MS-SVAR model is as follows:

$$\mathbf{y}'_t \mathbf{A}_0(\xi_t^c) = \mathbf{c}'(\xi_t^c) + \sum_{i=1}^{\rho} \mathbf{y}'_{t-i} \mathbf{A}_i(\xi_t^c) + \epsilon'_t \Sigma^{-1}(\xi_t^v) \quad (2)$$

where  $\mathbf{y}'_t = [y_t \quad d_t \quad \pi_t^y \quad \pi_t^c \quad r_t \quad q_t]$ ,  $\mathbf{c}(\xi_t^c)$  is the vector of constants,  $\mathbf{A}_0(\xi_t^c)$  is the invertible contemporaneous correlations matrix,  $\mathbf{A}_i(\xi_t^c)$  denotes the dynamic cross-correlation matrices for each lag term  $\rho$ , and  $\Sigma$  is a diagonal matrix capturing structural shocks' sizes. Following the standard practice in MS-VAR modeling [Sims and Zha (2006) and Sims *et al.* (2008)], we fix  $\rho = 5$  (i.e., to the data frequency plus one), and adopt Litterman (1986)'s random walk prior, consistently with the stochastic properties of the variables.<sup>11</sup> The calibration of priors follows Sims *et al.* (2008), which provide a benchmark for quarterly data MS-SVARs.<sup>12</sup> A multivariate normal distribution for the orthogonal structural shocks  $\epsilon_t$  is assumed:

$$P(\epsilon_t | \mathbf{Y}^{t-1}, \Xi_t, \theta, q) = \mathcal{N}(\epsilon_t | \mathbf{0}_n, I_n) \quad (3)$$

where the structural shocks' standard deviations are given by the diagonal elements of  $\Sigma^{-1}(\xi_t^v)$ ,  $\theta$  denotes the vector of the model's structural parameters, and  $\Xi_t$  and  $\mathbf{Y}^{t-1}$  collect past information on the latent processes and data, respectively.



**Table 1.** Descriptive statistics of states: moments

Variables	Monetary-financial states					
	Means			Standard deviations		
	Data	H-fin	L-fin	Data	H-fin	L-fin
$y_t$	9.086	9.286	8.993	0.516	0.573	0.356
$d_t$	2.928	3.554	3.735	0.318	0.524	0.500
$\pi_t^y$	0.982	0.754	0.709	0.631	0.828	0.354
$\pi_t^c$	0.961	1.436	1.091	0.525	3.432	2.873
$r_t$	1.209	2.092	0.711	0.972	1.609	0.762
$q_t$	6.535	9.206	3.974	0.706	1.899	1.626
Equity return	0.883	2.714	-2.466	6.589	4.509	8.594
Real ffr	0.407	1.337	0.002	0.708	1.773	0.764
Price/dividend	3.611	5.653	0.239	0.394	1.592	1.918
$q_t$ (bubble)	6.061	6.644	-0.606	0.605	0.870	2.953
Equity R (bubble)	0.797	1.128	-4.369	6.665	4.781	8.597

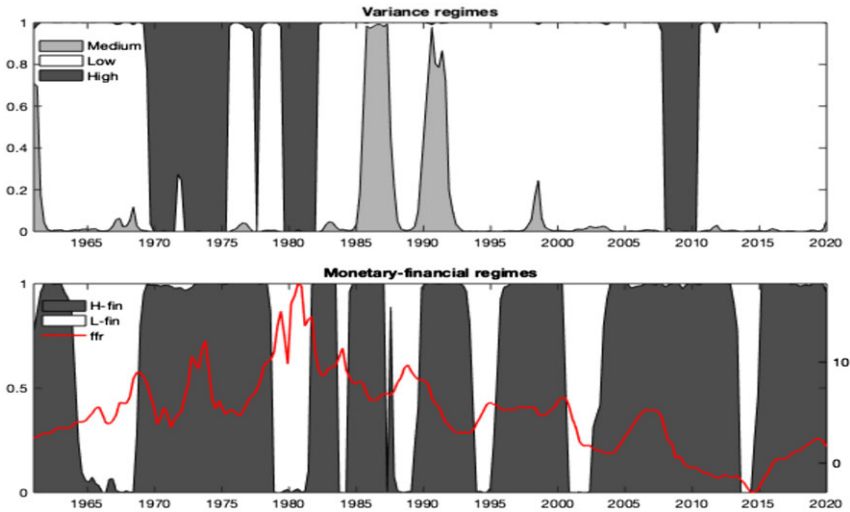
The table reports model variables' means and standard deviations and some selected derivations, conditional on staying in each state. The equity return is computed as the growth rate of S&P500 stock prices; the real policy rate is the deviation of the federal funds rate from inflation (based on the GDP deflator); " $q_t$  (bubble)" is the bubble component of S&P500 stock prices, as decomposed by Gali and Gambetti (2015), and "Equity return (bubble)" is the return rate of the bubble component of S&P500 stock prices.

In this framework, we identify the monetary policy shock by imposing the (lower triangular) recursive strategy adopted by Gali and Gambetti (2015)—inherited from Christiano et al. (2005)—where we order the federal funds rate after GDP, dividends, and inflation but before asset prices. Hence, we assume that monetary policy cannot respond contemporaneously to changes in asset prices and is consistent with some other key features: (i) on impact, only stock prices respond contemporaneously to the federal funds rate shock and (ii) monetary policy can react contemporaneously to output, dividends, and inflation changes. In this vein, we rely on an "information-based" identification approach, according to which slow-moving (real sector) variables do not respond contemporaneously to fast-moving (financial sector) ones, embodying a forward-looking component with considerable predictive content for the real economy.

We then test the relevance and nature of regime switches by computing the marginal data density (MDD) over differently specified competing models. As shown in Appendix B, this analysis selects a best-fit model  $(3\xi^v 2\xi_{r,q}^c)$  with a three-state Markov chain in the stochastic model component (generating *variance states*) and a two-state Markov chain in the asset price and interest rate systematic model component (generating *monetary-financial states*). Therefore, we label  $\xi^c = \xi^{mf}$ . The resulting regimes describe a story of state-dependent monetary policy and financial interaction.

### 2.3. Monetary-financial regimes

Monetary-financial states reflect nonlinear regularities of structural relations and shocks' transmission, describing the interaction of monetary and financial phenomena. Their occurrence defines two states: the "high finance state" (H-fin) and the "low finance state" (L-fin). As displayed in Table 1, summarizing some descriptive statistics conditional on states, the former characterizes periods of sustained and stable stock prices and equity returns, higher output, inflation, and higher interest rates; the latter, the low finance state, defines periods of lower stock prices and crashes in



**Figure 2.** United States: variance and monetary-financial regimes.

*Notes:* The figure shows the states' smoothed probabilities at the posterior mode from the best-fit benchmark model,  $3\xi^V 2\xi_{r,q}^C$ . The upper plot displays the smoothed probabilities for the variance states. The bottom plot displays the smoothed probabilities for states emerging on the monetary policy and the asset price equations. The series for the interest rate is shown below the latter.

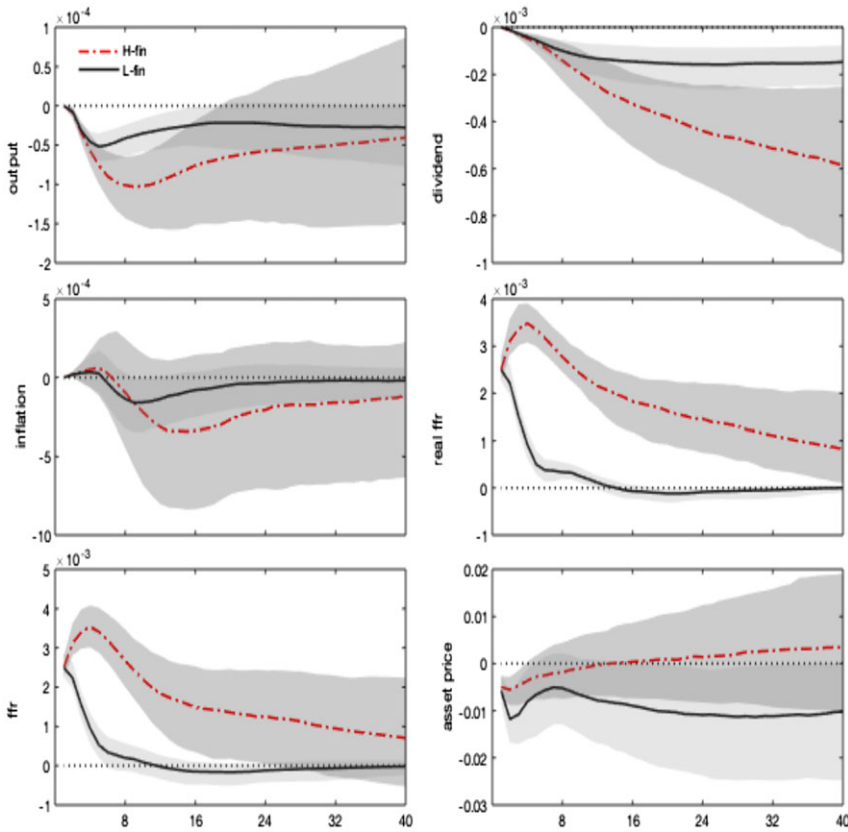
equity returns.<sup>13</sup> By decomposing the S&P500 stock price index in a fundamental and a bubbly component, as explained in Section 2.1, stock prices in the high finance state contain a sizeable bubble component, which explains the higher stock price levels under this regime. Stock returns are also explained (in levels and standard deviations) by their bubble component, which grows at higher and more stable rates. The price-dividend ratio is substantially higher in the high finance regime.

As for the US historical evolution of regimes, Figure 2 reports the smoothed probabilities evaluated at the posterior mode for the Markov chains emerging under the selected model in 1960–2019 quarterly sample. The top panel displays states' probabilities for the variance, capturing high (dark gray area), medium (light gray area), and low (white area) shocks' sizes. The bottom panel displays probabilities for the monetary-financial states, where the gray areas identify the high finance state and the white areas the low finance state. The red line tracks the evolution of the monetary policy rate over time to enhance regimes' interpretation.

Variance and coefficient regime switches can be interpreted in terms of historical events. Regimes on shocks' variances (low, medium, and high) detect high volatility during the two oil price turmoils in the 70s [as in Bianchi and Ilut (2017)], the reserve targeting period of the early 80s, and the first stages of the global financial crisis in 2008–09. The medium variance regime materialized around the second half of the 80s, covering the stock market crash in 1987 and the recession due to the Gulf War I of the early 90s. The remaining periods, thus the pre-70s, the financial deepening era of the early 90s until 2008, and the post-2009, reflected conditions of relative stability and low variations in shocks (low variance state).

Monetary-financial states emerge as a result of the interaction of monetary and financial phenomena.<sup>14</sup> Consistent with Jarrow and Kwok (2021), and Fusari *et al.* (2022), high finance regimes closely track market performance. In contrast, switches towards low finance states are centered around stock price turning points and occurred in the late 60s, during the first half of the 80s (Volker era), the dot-com bubble (2001), and the 2015–16 stock market sell-off, including the Chinese stock market turbulence, the Greek debt default and the effects of the end of quantitative easing in the US.





**Figure 3.** Monetary policy shock. Impulse responses.

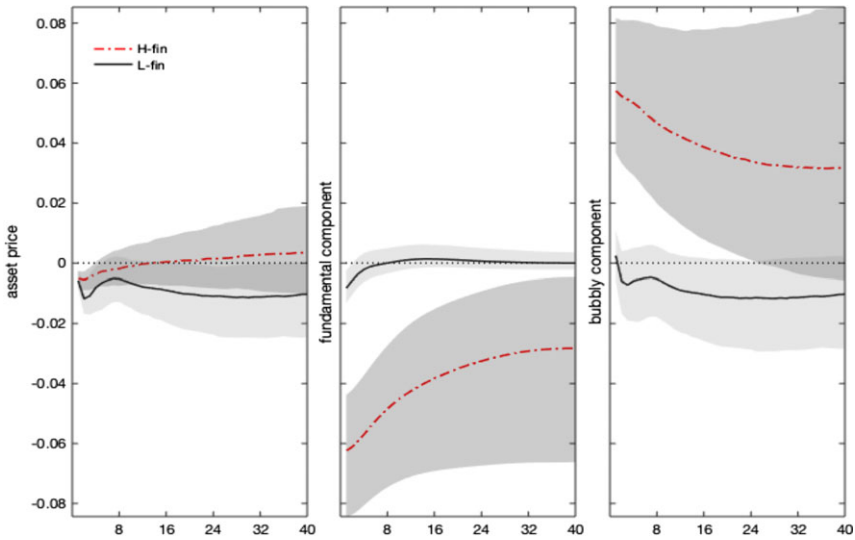
Notes: The figure shows the impulse responses to a 1% monetary policy shock. The difference across regimes only reflects nonlinearities in the monetary policy and asset price equations, driven by  $\xi^{mf}$ . Shaded areas denote 68% credibility sets.

**2.4. Impulse responses**

We evaluate the regime-specific conditional dynamics generated by an unexpected increase in the federal funds rate considering regime-dependent impulse response functions (IRFs).<sup>15</sup> To enhance the interpretation of results concerning the transmission dynamics across regimes, we condition the IRFs to a 1% contractionary monetary shock in all states.<sup>16</sup>

In Figure 3, impulse responses are regime-dependent and display different channels of monetary transmission, depending on whether the high or low finance state is in place. Specifically, a 1% interest rate shock triggers a drop in real GDP and real dividends, which worsens expectations of future profitability and reduces stock price evaluations, as predicted by the traditional theory.<sup>17</sup> The high finance state, where the bubbly component of stock prices is higher, features more amplification and less policy effectiveness in stabilizing target variables, leading to more robust and more persistent drops in real activity and dividends and a further increase in real interest rates.

Notwithstanding the drop in expected dividends, the fall in stock price is lower under the high finance (bubbly) state and vanishes after 1 year. Indeed, asset prices do not only co-move with dividends but also embed an additional premium resulting from their bubbly component, growing with real rates. By decomposing the stock price impulse response in a fundamental and a bubble component (equation 1), Figure 4 shows that the rise in the real interest rate, combined with the decline in dividends, generates a drop in the asset price fundamental component (in line with the



**Figure 4.** Monetary policy shock. Impulse responses: stock price decomposition.

*Notes:* The figure shows the impulse responses of asset prices, and their decomposition in a fundamental and bubbly component, to a 1% monetary policy shock. Differences across regimes only reflect nonlinearities in the monetary policy and asset price equations, driven by  $\xi^{mf}$ . Shaded areas denote 68% credibility sets.

conventional wisdom and economic theory). Under the high finance regime, real rates and dividends respond more, and the bubbly component of asset prices increases. This result is explained by the larger relative size of the bubble, as shown in Table 1, and by the more persistent response of real interest rates.

Our evidence confirms the findings in Gali and Gambetti (2015), which—using a time-varying VAR—find that an exogenous monetary tightening inflates the bubble, amplifying financial instability, mainly after the 90s with the Great Moderation and the onset of financial deepening. We qualify that heightened monetary-financial interaction, resulting in high equity premia, real rates, and a high bubble share in the composition of asset prices, is the main determinant of their result. Policy ineffectiveness to dampen the emergence of rational bubbles depends on the (recurrent) joint determination of financial outcomes with the monetary policy behavior.

### 3. A MS-OLG model for bubbles

We introduce Markov-switching behavior in Ciccarone *et al.* (2019)’s analytical model, as described in Appendix G. The economy is populated by overlapping generations (OLG) of agents living for two periods; young and old agents coexist in equal and constant proportion within each period.

The OLG framework is characterized by three main elements: (i) frictional financial markets; (ii) physical capital accumulation; and (iii) sticky prices. Households are grouped in two types: borrowers and lenders in the credit market. Borrowers can invest in physical capital and can trade an additional asset which is modeled as a “pure” bubble, analogous to a pyramid scheme.<sup>18</sup> Due to asymmetric information between creditors and debtors and the absence of state-contingent securities, the amount of credit that borrowers can obtain varies with the amount of collateral that can be pledged, which also depends on the (expected) value of the bubbly asset.

The economy produces one intermediate good and a continuum of differentiated final goods. Using capital and labor traded in competitive markets, a representative firm produces the intermediate good, which is sold under perfect competition to a continuum of monopolistically

competitive final producers. Final goods can be consumed or transformed into new physical capital, and are subject to price stickiness, through which monetary policy displays real effects.

Within each generation, the two classes of agents participate in the final goods market, the markets for productive inputs, and the financial markets. The savers work when young and save part of their labor income to purchase credit contracts paying the nominal interest. The firms producing the final output are owned by the old savers, who pass them on as a bequest at the end of their lives when young savers enter their old age. Profits and interest payments on credit contracts finance the consumption of old savers. Borrowers, who also consume the final good over their lifetime, invest, when young, in the productive (“fundamental”) and in the non-productive (“bubbly”) assets, and finance this expenditure by borrowing in the financial sector and using the resources left to them as a bequest by the borrowers of the previous generation.

Productive investments add to the capital stock, which the young borrowers buy from the old ones at the end of the period. The representative intermediate firm rents physical capital from borrowers and hands them the remuneration of capital when they become old. The bubbly assets are valued on the expectation of their resale value. Each generation of borrowers issues new bubbles with random initial values, which are traded in the market for bubbles alongside the old ones issued by previous generations and sold to the young ones.

In the credit market, identical and perfectly competitive banks accept the deposits demanded by savers and use them to supply the loans demanded by borrowers at the nominal loan rate. At the end of each period, loans and deposits (plus interest) are paid back, banks’ balance sheets clear, and banks shut down to open again at the beginning of the next period. Savers can hold two types of financial assets: money supplied by the central bank and bank deposits. The central bank sets the interest rate on deposits by following a dynamic rule targeting inflation and the bubbly asset.<sup>19</sup>

Old borrowers supply the outstanding bubbles issued in the previous period and can issue new bubbles. Young borrowers demand both types of the bubble. Young savers, who supply labor inelastically, enter each period without previously accumulated cash holdings and deposits, receive money wage income, and deposit at banks. At the end of the period, deposits and interest earnings are repaid. A cash-in-advance constraint requires agents to allocate money balances and money wage income for consumption, net of the deposits they make at banks. The old savers receive the aggregate profits obtained from retailer firms and banks and are not interested in carrying financial assets to the future (bequest motive).

Credit market imperfections affect the behavior of banks, which may not always obtain the full repayment of the loans provided to the borrowers. To obtain loans, borrowers must then provide credit intermediaries with collateral. They can pledge only a fraction of their future resources but create and exchange a bubbly asset that can also be used as collateral. The overall guarantee provided by borrowers eliminates the need for banks to add a risk premium on top of the riskless rate.

The OLG model is Markov-switching in the bubble size and the monetary policy rule, according to a Markov process capturing monetary-financial regimes. This feature generates two states, namely the high finance and low finance states, in line with the empirical evidence. In this modeling framework, agents form expectations knowing that in each period the economy can switch to a different monetary-financial state of the economy, with a given transition probability.

### 3.1. The market for bubbles

The equilibrium between demand (by young borrowers) and supply (by old borrowers) of the bubble in every period is  $B_{t+1} = B_t + B_{t+1}^N$ , where  $B_{t+1} \geq 0$  is the physical amount of the bubble supplied at  $t + 1$  and  $B_{t+1}^N$  represents newly issued bubbles. The bubble equilibrium equation can be expressed as

$$Q_{t+1} = R_{t+1}^B Q_t + Q_{t+1}^N \quad (4)$$

where  $R_{t+1}^B = P_{t+1}^B/P_t^B$  is the real factor of return on the bubble,  $P_{t+1}^B$  and  $Q_t = P_t^B B_t$  are the real price and the real value of the bubble, respectively. The new bubble creation process is linked to the economy's size through the parameter  $\omega > 0$ :  $q_t^N = \omega y = \omega A k^\alpha$ , where  $q_t^N = Q_t^N/g^t$  is the trend-less value of the new bubble and  $y, k$  are the stationary levels of output and capital, respectively; hence,  $\omega$  measures the bubble-to-output ratio.<sup>20</sup> If  $\omega = 0$ , the economy sets itself into a “no bubble” stationary state in which the level of capital  $k_{NB}$  is generally lower than that of a “bubbly” economy ( $\omega > 0$ ).

We assume the bubble share follows a two-state Markov process  $\xi_t^{mf}$ , capturing the financial side of the monetary-financial interaction we evidence in the MS-VAR. The Markov process produces two states: a bubbly and a no-bubbly scenario.<sup>21</sup> The monetary policy counterpart will be discussed in the next section.

In order to understand the effects of  $\bar{\omega}$  on the stationary value of capital  $k$ , and hence on  $y$ , take the equilibrium relationship between  $k$  and the real interest factor  $R$  in the credit market,  $Ak^{\alpha-1} = f_B(R)$  from equation (G27), and solve it for  $k$ . Then, compute the following derivative:

$$\frac{dk(R)}{d\bar{\omega}} = \frac{gk(R)^{2-\alpha}}{(1-\alpha)AR} \left[ \frac{\phi r^k - \frac{\varepsilon_{R,\bar{\omega}}}{\bar{\omega}} \left( \frac{r^k}{\mu\alpha} (\phi\mu\alpha + \bar{\omega}) + (1-\delta_K)\phi \right)}{\frac{\xi}{R}(\phi\mu\alpha + \bar{\omega})} + \frac{(1-\phi)\eta}{\eta+\beta} \mu\alpha \right]$$

$$\varepsilon_{R,\bar{\omega}} = \frac{dR/R}{\frac{d\bar{\omega}}{\bar{\omega}}} > 0, \quad r^k = \alpha\mu Ak^{\alpha-1}$$

The sign of  $\frac{dk(R)}{d\bar{\omega}}$  defines two different regions for the effect on capital of an increase in the bubble share. We are in *crowding-in* (*crowding-out*) when an increase (decrease) in the bubble share ends up stimulating (dampening) the accumulation of capital:

$$\bar{\omega}\phi r^k - \left[ (r^k + 1 - \delta_K)\phi + \frac{q^N}{k} \right] \varepsilon_{R,\bar{\omega}} \geq 0$$

Therefore, the direction in which the bubble share  $\bar{\omega}$  in the (locally unique) stationary state affects capital depends on three different channels acting on the three terms of the above inequality:

- *Collateral channel*: an increase in the bubbly asset (higher  $\bar{\omega}$ ) slackens the collateral constraint allowing borrowers to demand more funds and invest more. This yields a positive effect on  $k$  and  $y$  (crowding-in), through the term  $\bar{\omega}\phi r^k$ ;
- *Price channel*: a higher  $\bar{\omega}$  increases the cost of borrowed funds, leading borrowers to demand fewer funds and to invest less. This result produces a negative effect on  $k$  and  $y$  (crowding-out), via the term  $\varepsilon_{R,\bar{\omega}}$ ;
- *Asset allocation channel*: a higher  $\bar{\omega}$  increases the quantity of the bubbly asset to be purchased, crowding out productive investment expenditures. This effect increases with the total return on capital, and it yields a negative effect on  $k$  and  $y$  (crowding-out), through the term  $(r^k + 1 - \delta_K)\phi + \frac{q^N}{k}$ .

The final effect of an exogenous increase of  $\bar{\omega}$  on  $k$  (i.e., whether the economy is in a crowding-in or a crowding-out regime) is determined by the relative size of these three channels.

**3.2. Monetary policy**

In order to simulate an exogenous shock to the policy rate, we assume the following monetary rule:<sup>22</sup>

$$\widehat{(1 + i_t)} = \rho_{i, \xi_t^{mf}} \widehat{(1 + i_{t-1})} + (1 - \rho_{i, \xi_t^{mf}}) \left( \delta_{\pi, \xi_t^{mf}} \pi_t + \delta_{q, \xi_t^{mf}} \hat{q}_t \right) + e_t^i \tag{5}$$

$$e_t^i \sim i.i.d. (0; \sigma_{e^i}^2)$$

where  $\widehat{(1 + i_t)}$  is the deviation of the monetary policy factor from its steady-state value,  $\delta_\pi > 1$  and  $\delta_q \geq 0$  denote the policy reaction parameters to inflation and the bubble ( $\delta_q > 0$  indicates a LAW policy), and  $\rho_i$  captures the persistence of the policy rate.<sup>23</sup> We set the policy reaction to inflation and the bubble and the policy persistence as functions of the two-state Markov process,  $\xi_t^{mf} \in \{H\text{-fin}, L\text{-fin}\}$ , which jointly affects the steady-state bubble-to-output ratio. This process evolves according to a transition matrix,  $H^{mf}$ , whose calibration is given by the VAR estimates, and which delivers monetary-financial regimes.

**3.3. Solution method**

We solve the model using the efficient perturbation methods applied to Markov-switching models elaborated by Maih (2015) and Foerster et al. (2016).<sup>24</sup> A detailed description of the solution method is reported in Appendix H. The model’s first-order approximated solution can be written in the following form:

$$\Upsilon_t = T_{\xi_t^{mf}}(\Upsilon_{t-1}, \chi, \epsilon_t) \tag{6}$$

$$T_{\xi_t^{mf}} = T_{\xi_t^{mf}}(z_{\xi_t^{mf}}) + DT_{\xi_t^{mf}}(z_{\xi_t^{mf}}) (z_t - z_{\xi_t^{mf}})$$

where  $\Upsilon_t$  is the vector of model variables,  $T_{\xi_t^{mf}}$  the Taylor first-order expansion,  $\chi$  defines the perturbation parameter,  $\epsilon_t$  the vector of structural shocks, and  $DT$  the matrix of first-order derivatives. The expansion point,  $z_{\xi_t^{mf}} = (\Upsilon, 0, 0)$ , is the vector of the steady states of the state variables,  $z_t = (\Upsilon_{t-1}, \sigma, \epsilon_t)$ . As in Aruoba et al. (2018), where both a targeted-inflation steady state and a deflationary steady state are considered, we expand around two steady states per regime.

**3.4. Model-based impulse responses**

We compute the impulse response functions to the monetary policy shock. We calibrate the model at the annual frequency by fixing  $\beta = 0.96$ ,  $\alpha = 0.33$ ,  $\gamma_b = 1$ ,  $g_s = 1.02$ ,  $\gamma_s = 0.2$ ,  $\mu = 1 - 1/42$ ,  $\delta_k = 0.1$ ,  $\beta_{beq} = 42$ ,  $\phi = 0.03$ ,  $A_2 = 0.3$ ,  $\sigma_i = 0.01$ . The transition probabilities are fixed at the annual counterparts of the MS-VAR quarterly estimates: the probability of moving from the high to the low finance regime is thus 0.1834 and that from the low to the high 0.4205.

The Markov-switching parameters,  $\omega$ ,  $\rho_i$ ,  $\delta_\pi$ , and  $\delta_q$ , are estimated using a novel regime-dependent impulse response matching algorithm, mapping model-implied impulse responses to VAR results. More specifically, we match four regime-dependent VAR impulse responses: output, inflation, interest rate, and the bubble component of asset prices. Table 2 reports the results.

The estimation leads to a regime of high finance corresponding to a bubbly economy with a more persistent and less reactive monetary policy rule for inflation and displaying a LAW monetary policy rule ( $\delta_q > 0$ ). Under this regime, the stationary level of the bubble is high enough to locate the economy in a crowding-in mode, with higher stationary levels of real rates, capital, and output. Instead, the L-fin regime corresponds to a no-bubbly economy, with policy rates targeting more actively inflation and lower interest rate persistence. This result provides further insight into Gali and Gambetti (2015)’s main conclusion.

**Table 2.** Model calibration based on impulse response-matching

Parameter	Definition	Strategy	Value
$\omega(\text{H-fin})$	Bubble share of GDP in H-fin regime	IRF Matching	0.014
$\omega(\text{L-fin})$	Bubble share of GDP in L-fin regime	IRF Matching	0.000
$\rho_i(\text{H-fin})$	Monetary policy persistence in H-fin regime	IRF Matching	0.379
$\rho_i(\text{L-fin})$	Monetary policy persistence in L-fin regime	IRF Matching	0.198
$\delta_\pi(\text{H-fin})$	Reactiveness of ffr to inflation in H-fin regime	IRF Matching	0.866
$\delta_\pi(\text{L-fin})$	Reactiveness of ffr to inflation in L-fin regime	IRF Matching	1.531
$\delta_b(\text{H-fin})$	Reactiveness of ffr to bubble in H-fin regime	IRF Matching	2.000
$\delta_b(\text{L-fin})$	Reactiveness of ffr to bubble in L-fin regime	IRF Matching	0.000

The estimated values are generated by matching the regime-dependent impulse responses of output, inflation, interest rate, and the asset price bubble component. Weights are based on their confidence intervals.

Given the above calibration for the two states, Figure 5 shows the model-based impulse responses in the two regimes compared to the VAR counterparts. Following a positive shock to the nominal interest rate, the model predicts a recession/deflation and an increase in the real rate.<sup>25</sup> More importantly, in a bubble economy (H-fin regime) the contractionary monetary policy inflates bubbles' valuation, in line with our empirical evidence in Section 2.

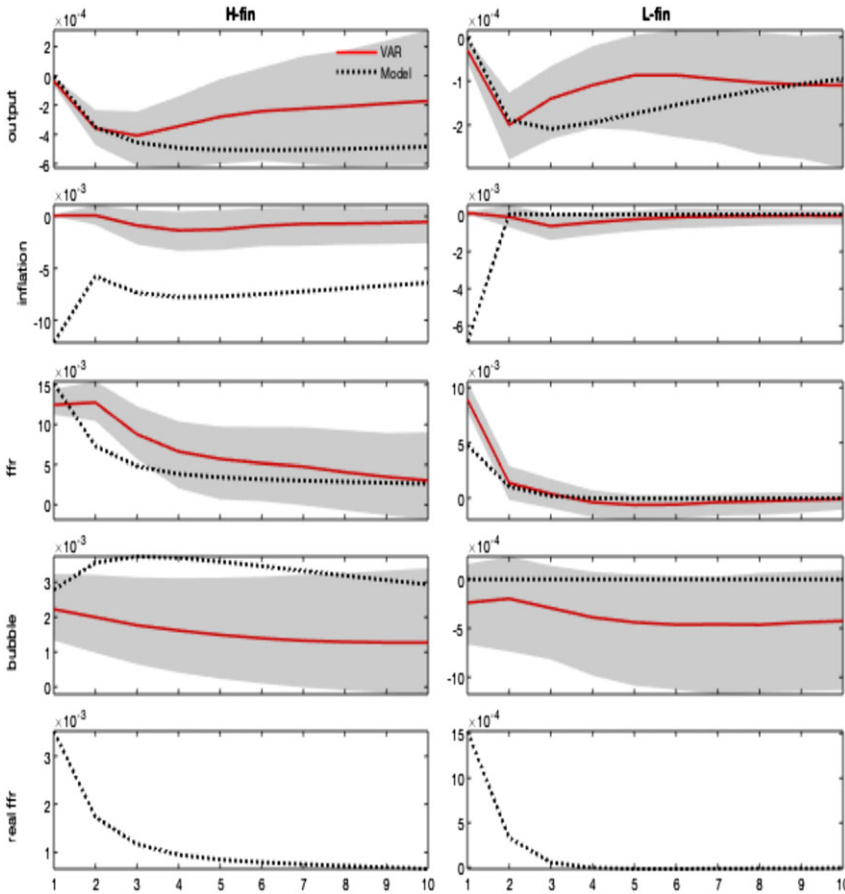
The economic mechanism underlying these results is as follows: the monetary policy shock has a direct impact on the real interest rate, due to the nominal rigidity. In addition to the demand channel acting through the Euler equation and favoring future consumption, the increase in the real interest rate generates two additional effects: the demand for credit is reduced due to a price channel (the increased cost of borrowed funds); the value of the bubble rises, and an allocation channel redirects more resources toward the purchase of the bubble. These recessive channels more than compensate for the effect of the increase in the bubble size on credit demand due to the slackening of the collateral constraint, which allows borrowers to demand more funds (collateral channel). The outcome is a recession/deflation coupled with a rise in the bubble value. The policy reaction to the fall in inflation tends to mitigate the recessionary effects of the shock by reducing the amplitude of the downturn of output and inflation.

The recession/deflation and the increase in the real rate (and hence in the bubble component) are magnified when  $\rho_i > 0$  and/or  $\delta_q > 0$ , namely under the high finance regime. The reason is that, following the exogenous interest rate shock, the policy reaction is dampened by the higher policy persistence and by the response to the bubble. Under LAW, the signal sent from the fall of inflation, which calls for a reduction of the real rate, is partially offset by the increase in the bubble component. The response of the central bank results in an effort that is too feeble in stabilizing the real interest rate. This result explains more persistence in the nominal interest rate response, higher real rates, and more severe recession/deflation compared to the L-finance regime. In a no-bubbly economy, interest rates respond to inflation only (and more than in H-fin), dampening the initial effects of the shock.

### 3.5. Policy credibility and uncertainty scenarios

Our empirical and theoretical results are obtained under the hypothesis that stock market bubbles exist and can be measured, at least indirectly. A recent macro-finance literature [e.g., Jarrow (2016), Jarrow et al. (2011a, b), Jarrow and Kwok (2021), Fusari et al. (2022)] provides several convincing contributions on the existence of bubbles. However, the proliferating bubble detection methods testify that measurement issues are far from being solved. Uncertainty about the empirical reliability of specific bubble component's evaluation methods is a pervading limitation our analysis shares with previous contributions. To widen its validity domain, we test the robustness



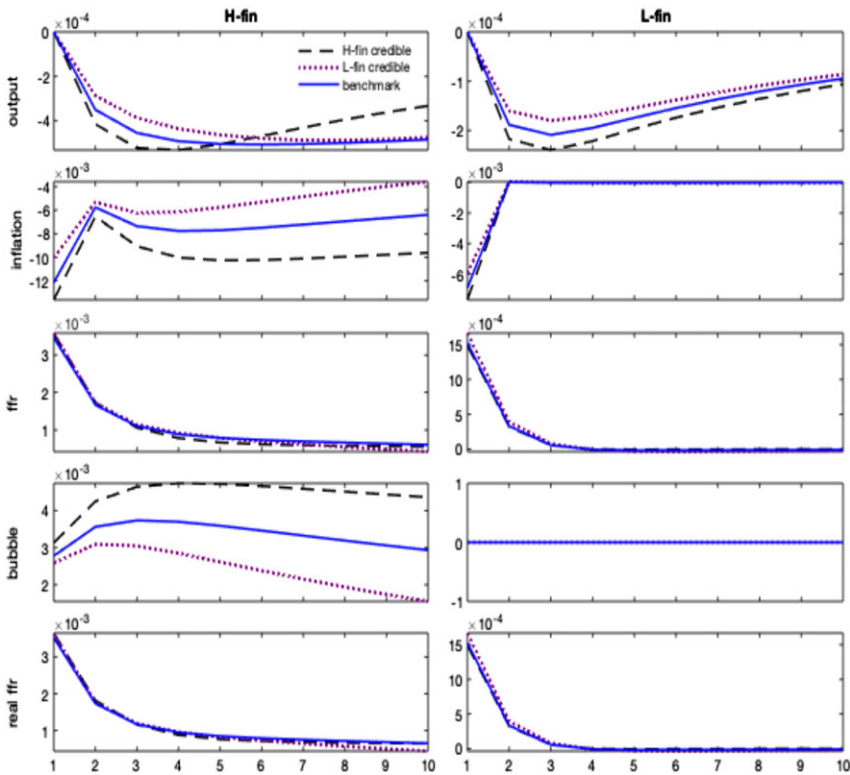


**Figure 5.** Monetary policy shock. Regime-dependent impulse responses.

*Notes:* The figure shows the model-implied versus VAR-based impulse responses of selected variables (output, inflation, nominal interest rate, bubble, and the real interest rate) to a 1% monetary policy shock. Regimes affect the steady state parameter  $\omega$  and the monetary policy rule, namely  $\rho_i$ ,  $\delta_\pi$  and  $\delta_q$ . The impulse response matching is based on the following grid:  $\omega(\text{H-fin}) \in [0, 0.018]$ ,  $\omega(\text{L-fin}) \in [0, 0.01]$ ,  $\rho_i(\text{H-fin}) \in [0.3, 0.6]$ ,  $\rho_i(\text{L-fin}) \in [0.1, 0.3]$ ,  $\delta_q(\text{H-fin}) \in [0, 0.2]$ ,  $\delta_q(\text{L-fin}) \in [0, 2]$ ,  $\delta_\pi(\text{H-fin}) \in [0.8, 2]$ ,  $\delta_\pi(\text{L-fin}) \in [1.25, 2]$ . The corresponding loss function, computed on the distance between VAR and model-based impulse responses at the estimates, is equal to 0.1438. Shaded areas denote 68% credibility sets.

of our results against alternative assumptions regarding the monetary-financial regimes and the agents' capacity to observe them.

In the first set of counterfactual scenarios, we assess the role of agents' beliefs on macroeconomic dynamics under the two regimes, by comparing the benchmark impulse responses to scenarios built by varying the probability distribution of regimes. Being part of their information set, they may depend on policy credibility. A second set of counterfactuals is used to consider the role of uncertainty around the realization of regimes, hence the existence and valuation of a bubble. In this case, we depart from the standard rational expectations assumption that agents can observe the true transition matrix for monetary-financial regime shifts and assume that they are uncertain about how long any observed regime shift will last and hence must learn about its duration. We do so by comparing the benchmark impulse responses to those built under learning, passing from the perception of a short-lived to a long-lived high finance regime. To complement the analysis, we evaluate the same counterfactuals for the case of a monetary authority setting the interest rate disregarding bubbles, even when they exist.



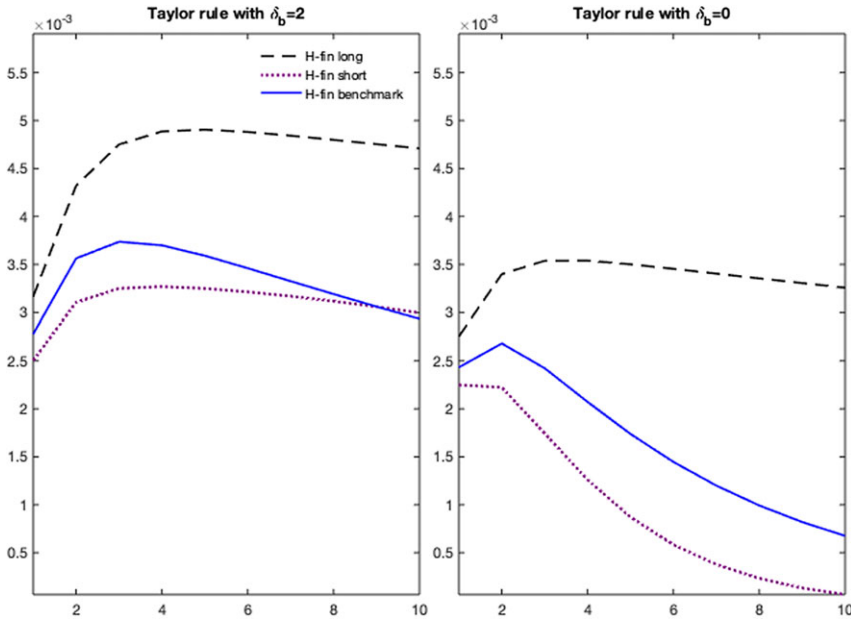
**Figure 6.** Impulse responses to monetary policy shock. Counterfactual scenarios on policy credibility.

*Notes:* The figure compares the impulse responses extracted from the estimated model to those from counterfactual scenarios defined as follows: an H-fin credible scenario increases the probability of switching from L-fin to H-fin and decreases the probability from H-fin to L-fin; an L-fin credible scenario increases the probability to switch from H-fin to L-fin and decrease the probability from L-fin to H-fin.

More specifically, in the first set of scenarios in Figure 6, the transition matrix is modified such that agents attach different probabilities to the occurrence of a regime change. We label as “H-fin credible” the scenario where we set to zero the probability of going from H-fin to L-fin and increase by 50% that of transitioning from L-fin to H-fin (from 0.1834 to 0.2751). We label as “L-fin credible” the scenario where we set to 0.01 the probability to go from L-fin to H-fin and increase by 50% that of transitioning from H-fin to L-fin (from 0.4205 to 0.6307).

The credibility of announcing a different policy can significantly affect the efficacy of the current policy stance. When agents expect the high finance policy ( $\rho_i > 0, \delta_q > 0$ ) to last longer (H-fin credible), the effect of a monetary policy shock is exacerbated both in terms of deeper recession/deflation and bubble’s inflation. In the long run, the increase in asset valuation boosts the borrowing capacity and favors a faster exit from the crisis. Suppose, instead, that in response to an announced shift toward a stabilizing regime (low finance), agents assign a higher probability to switch to the low finance regime (L-fin credible). In that case, they also assign a higher probability to the belief that the policy rule will be more stabilizing in the future. Hence, they may start disinvesting in the bubbly asset in anticipation, effectively raising the probability of switching to the no-bubble scenario. This result makes the deflationary and recessive effects of the monetary policy shock smoother. In a nutshell, in a bubbly world, the impact of monetary tightening depends on how agents form their beliefs on the credibility of the monetary policy and the state of the bubble.

In the second set of counterfactual scenarios, we model the idea that agents can still observe the regime in place at each point in time. However, they face uncertainty about the nature of



**Figure 7.** Impulse responses of the bubble to a monetary policy shock in high finance regime. Counterfactual scenarios on regime uncertainty.

*Notes:* The figure compares the benchmark impulse response of the bubble to the monetary policy shock in the high finance regime to those from two counterfactual scenarios defined as follows: an H-fin long scenario where the probability of going from H-fin to H-fin long-lasting is 0.99, and the probability of going from H-fin temporary to the L-fin regime is 0.01; an H-fin short scenario where the probability of going from H-fin temporary to H-fin long-lasting is 0.01, and the probability of going from H-fin temporary to the L-fin regime is 0.4205. The left panel performs the counterfactual scenarios with a monetary policy rule targeting the bubble, as from the impulse response matching,  $\delta_b = 2$ . The right panel assumes the monetary authority does not respond to the bubble,  $\delta_b = 0$ .

deviations from the low finance regime. Namely, they are unsure if the central bank is engaging in a short or long-lasting high finance regime. This simulation introduces a learning mechanism on the persistence of regime changes [Bianchi et al. (2022)], by expanding the number of regimes to account for short- or long-lasting perceived high finance regimes.<sup>26</sup> We use three states: a low finance regime, a short-lasting, and a long-lasting high finance regime. Uncertainty arises because the two high finance regimes share the same parameter values governed by  $\xi^{mf}$ , which agents recognize as belonging to a high finance regime. However, they cannot precisely infer whether it is a short- or long-lasting high finance regime. This is something they learn after switching to the new regime. After the switch to high finance, agents initially perceive it as a temporary deviation while adjusting only afterward to persistent changes.

In Figure 7, we compare the bubble impulse response to a monetary tightening in the high finance regime (blue line), under the estimated VAR-based calibration, to those when it is perceived as temporary (purple dotted) and long lasting (black dashed). In the first case, we assume a transition matrix where the probability of going from the temporary to the long-lasting high finance regime is 0.01, and the probability of going from short-lasting high finance to the low finance regime is 0.4205. We denote this as the “H-fin short scenario”. In the second case, we assume the probability of going from H-fin temporary to H-fin long-lasting is 0.99, and the probability of going from H-fin temporary to the L-fin regime is 0.01. We denote this scenario as an “H-fin long scenario”.

Learning about the persistence of the high finance regime implies that bubbles in the model respond to shifts to the high finance regime by initially underreacting to the monetary policy

shock (short-lasting scenario) compared to the benchmark high finance response. Then, when they realize the shift is more persistent, they tend to overreact. We run the same counterfactual scenarios on a model where the central bank does not target the financial cycle and disregards bubble dynamics ( $\delta_b = 0$ ). Both in the benchmark VAR-based version of the transition matrix and in the counterfactual scenarios on the duration of the high finance regime, the bubble response to a monetary policy shock is lower and less persistent, thus reinforcing our argument against the LAW policy.

#### 4. Conclusions

This paper contributes to the empirical evidence showing that an unexpected monetary tightening determines an increase in the stock price's bubble component. By estimating a Markov-switching structural vector autoregressive model over U.S. data, we find that regimes of high stock prices and equity returns are those in which a monetary policy tightening leads to higher fluctuations in real macroeconomic variables and inflation, together with an increase in the bubbly component of the stock price. That more than offsets the decline in the fundamental component in the medium to long term. This result is described over identified regime-shift events in the history of the U.S. monetary and financial facts.

We then use a model for rational bubbles to match and rationalize the empirical findings. The model predicts that a monetary tightening proves ineffective in reducing stock prices in a bubbly economy, increasing real rates. Under this state, monetary policy is less reactive to inflation, favoring more persistent recession/deflation. The outcome is a more severe recession/deflation coupled with a rise in the bubble value.

Counterfactual scenarios on policy credibility show that if agents believe that the transition to a bubbly regime is more likely, a monetary policy shock is exacerbated in terms of deeper recession/deflation and bubble inflation. Instead, if agents face uncertainty about the duration of regimes, a gradual adjustment in the bubble valuation is observed after the regime shift dates, until explaining an overreaction of the bubble to the monetary impulse. Despite the limitations of the analysis coming from the unresolved empirical issue on bubble detection, these additional checks help interpreting our findings in the context of a realistic policy making.

#### Notes

1 These issues relate to: (i) monetary policy ineffectiveness in long-run models [Martin and Ventura (2016) and Ikeda and Phan (2016)]; (ii) the difficulty of including productive capital in “perpetual youth” frameworks [Gali (2021)]; (iii) the preference for the backward-looking sunspot solution around a stable bubbly steady state vs. the forward-looking minimal state variable solution around an unstable bubbly steady state; and (iv) the differences produced by the adoption of an infinite-horizon framework vs. an overlapping generations (OLG) model [Miao *et al.* (2019)].

2 Fama's criticism states that when an abnormal asset (or portfolio) return behavior is observed, it is unclear whether it should be attributed to market inefficiency or a flawed market equilibrium model. Furthermore, on average, substantial increases in asset prices are only sometimes followed by low returns. Hence, if bubble components in asset prices (and the related dynamics) cannot generally be reliably detected and evaluated, it is hard to see how a monetary authority can condition its policy decisions on them.

3 This modeling approach has been recently revitalized by Martin and Ventura (2015, 2016), Carvalho *et al.* (2012), Ikeda and Phan (2016), among others. In these contributions, the inclusion of financial frictions plays a crucial role in shaping the features of the bubbly equilibrium and in overcoming the restriction of the dynamic inefficiency affecting former frictionless models. Several theories try to rationalize mechanisms that allow for the emergence of bubbles other than the dynamic inefficiency assumption typical of the OLG framework. See Brunnermeier (2001) for a review of bubble models based on asymmetric information and Enders and Hakenes (2021) for a bubble-generating mechanism based on an unknown market depth and limited liability. For a theory of credit-driven stock-price bubbles in infinite horizon models, see Miao and Wang (2018), where bubbles emerge because firms borrow against the stock market value of their collateralized assets.

4 See Shorfeide (2005), Davig and Leeper (2007), and Bianchi (2013) for applications to forward-looking Markov switching rational expectations models.

5 Jarrow and Lamichhane (2022) also link bubbles' dynamics to the monetary policy reactivity.

- 6 A Markov-switching model reveals appropriate to this purpose because (i) variations in asset prices are consistent with discrete abrupt changes, well captured by Markov chains, as documented by the extensive literature detecting regimes of surviving and collapsing bubbles [Driffill and Sola (1998), Hall et al. (1999), Brooks and Katsaris (2005), Michaelides et al. (2016), and Chan and Santi (2021)]; (ii) it allows distinguishing between nonlinearities affecting the structure of the economy (and transmission of shocks) and the size of shocks separately.
- 7 The traditional approaches to bubble detection define a model for the asset's fundamental value, therefore being plagued by the joint hypothesis problem [Fama (1991)]. This argument does not apply to continuous-time bubbles, which, relying on the local martingale theory of bubbles (see Protter (2013) for a comprehensive survey), can be detected without the need for a model of the asset's fundamental value, or it can be independently validated, thereby enabling a direct test for asset price bubbles [Jarrow (2016)]. Within this framework, two main empirical approaches are emerging. The first tests whether the asset price process is a local martingale using diffusion models [Jarrow et al. (2011a, b)]. The second infers bubbles using option prices, namely the differential pricing between put and call options. Applications by Jarrow and Kwok (2021) and Fusari et al. (2022) to S&P500 data document the existence of significant bubbles whose historical recurrence is consistent with our evidence on regimes. Nevertheless, our time-series approach allows us to track a more extended pricing history to study the interaction with monetary policy.
- 8 In Appendix C, we estimate the bubble response with a linear Bayesian VAR and show that regime changes extract amplification in dividends and persistence in real rates, leading to a more profound decline in asset price fundamentals.
- 9 A detailed description of variables' definitions and data sources is presented in Appendix A.
- 10 Coefficient and variance switching should be considered as two independent sources of nonlinearities differently affecting the properties of the model. The former alters the transmission of shocks to the economy through nonlinearities in the agents' behavior or the economy's structure. The latter pertains to differences in structural shocks' sizes as resulting merely from big or small shocks. It is a standard practice in the Markov-switching literature [see Sims and Zha (2006), and Bianchi and Ilut (2017)] to make this distinction to ensure that variance switching is not wrongly attributed to coefficient switching. If, when accounting for variance regimes, the resulting coefficient regimes denote an improvement in model fit, then they are relevant and worthy to be studied.
- 11 We have verified that both the SBC and AIC on the linear VAR suggest selecting a lag order of 3. With this specification, results are qualitatively unaffected, signaling that the Bayesian penalty introduced by the Minnesota prior structure is not critical in driving our main results.
- 12 Specifically, we adopt the following hyperparameters:  $\mu_1 = 1; \mu_2 = 1; \mu_3 = 0.1; \mu_4 = 1.2; \mu_5 = 1; \mu_6 = 1$ . The prior for the transition probabilities is a Dirichlet distribution implying a symmetric prior average duration of regimes of six quarters. The results are robust to reasonable variations in the hyperparameters. Estimates are generated with one million Gibbs sampling replications, where the first 100,000 draws are discarded as burn-in, and one in every ten draws is retained.
- 13 The states' descriptive statistics correspond to the values to which selected moments are expected to converge once a state is in place for an extended period.
- 14 In line with the literature on macro-financial switches [Hubrich and Tetlow (2015), Patella and Tancioni (2021), Beqiraj et al. (2021)], they are characterized as highly recurrent states.
- 15 Forecast error variance decompositions (FEVDs) are in Appendix F.
- 16 Note that variance states do not affect the model-generated transmission dynamics, which depend only on the model's coefficients. The relative contribution of the monetary policy shock to each variable's variance is also unaffected by such a re-scaling. In Appendix E, we report results where we do not apply the normalization, hence considering variance regimes.
- 17 The impulse response of inflation does not display a price puzzle, a well-recognized issue in the empirical literature [Sims (1992)]. This result is obtained by applying the Estrella (2015)'s overidentifying restriction.
- 18 Although this structure may seem oversimplified, it is worth noting that assets made up of a pure bubble component (and devoid of a fundamental one) are not impossible to imagine, nor are they limited to "fiat money". A notable example is with cryptocurrencies: they are mostly held as assets (their role as a medium of exchange is still quite limited), hence no visible fundamental or contractual element back them. Most students and experts conceive cryptocurrencies as a pure bubble, and their dynamic behavior is often compatible with such type of asset [see, e.g., Enoksen et al. (2020)].
- 19 This result is equivalent to allowing households to buy government assets and to hold bank deposits, representing a form of private liquidity [Aksoy et al. (2013)]. As riskless deposits and riskless noncontingent government bonds are perfect substitutes in the savers' portfolios, assuming no-arbitrage conditions, the deposit rate always equals the government bond rate [Freixas and Rochet (1997)]. The central bank is also setting the nominal interest rate on public (outside) liquidity (in zero net supply), reflecting in reduced form open market operations.
- 20 The term  $g$  is the economy's exogenous growth factor, while  $A$  and  $\alpha$  are the parameters of the Cobb–Douglas production function.
- 21 Since the bubble-to-output ratio is a steady state parameter, it is computed as the ergodic mean value of the Markov-switching shares,  $\omega^{mf} = \bar{\omega}$  [Foerster et al. (2016)]. See Section G.5 for details.
- 22 The percentage deviations for the generic (trendless) variable  $z_t$  from the stationary state are indicated as  $\hat{z}_t = \frac{z_t - \bar{z}}{\bar{z}}$ .
- 23 The assumption that the central bank can form an idea of the quantity  $\hat{q}_t$  may be considered a strong one, especially in the light of Fama's criticism. Nevertheless, recalling the discussion in Section 1, the same problem applies to many different

conceptual variables frequently used in macroeconomics, which are by nature unobservable. The component of the Taylor rule related to a measure of the output gap is only one policy-relevant example. In most of the theoretical and applied literature on monetary policy, the output gap is defined in theoretical terms and then translated into estimated values: the reaction term  $\delta_{q,\xi_t} \hat{q}_t$  can be analogously justified.

24 They differ in the fixed point around which they perform the Taylor series expansion. Foerster *et al.* (2016) expand around the steady state associated with the parameters' ergodic mean. The approach pioneered by Maih (2015), instead, expands around the steady state associated with each regime taken in isolation. In our case, the regimes do not alter the steady state. Therefore, the two approaches would not differ.

25 The distance between the model- and VAR-based impulse responses of inflation is due to the weak and delayed reaction in the price dynamics generated by the VAR.

26 Bianchi *et al.* (2022) performs a similar simulation to explain extrapolative behaviors of investors' asset valuation to monetary policy regime changes.

27 To take model complexity under control and numerical computation feasible, we allow no more than three states for the chain on shock variances and two states for the chain on the structural parameters. Limiting the nonlinear structure to a compact size unavoidably comes at the risk of ignoring potentially relevant additional states. However, keeping the state space to a minimum dimension on the shocks' variance domain allows for identifying meaningful changes in the systematic model component, which may otherwise be hidden under the proliferation of stochastic states. The unobservables would become uninformative for the identification of the actual source of nonlinearity in the SVAR [Benati and Surico (2009) and Fernández-Villaverde *et al.* (2010)].

28 It corresponds to an Epstein–Zin utility function when agents are “risk neutral”. See Martin and Ventura (2015).

29 The inclusion of the bequest term is needed in order to calibrate the steady state of the model at yearly frequency.

30 This condition guarantees that borrowers are willing to borrow funds in the credit market, as the return on the real capital they can buy with them is greater than the factor of return on credit that will be paid to savers.

31 We use the Mankiw and Reis (2002) “sticky information” model.

32 The steady state must be independent of the realization of any regime in the discrete Markov process governing parameter changes [Foerster *et al.* (2016)]. We follow the literature and define the steady state with the ergodic mean values of the Markov-switching bubble-to-output share.

## References

- Aksøy, Y., H. Basso and J. Coto-Martinez. (2013) Lending relationships and monetary policy. *Economic Inquiry* 51(1), 368–393.
- Al-Anaswah, N. and B. Wilfling. (2011) Identification of speculative bubbles using state-space models with Markov-switching. *Journal of Banking and Finance* 35(5), 1073–1086.
- Allen, F., G. Barlevy and D. Gale. (2018). Theoretical Model of Leaning Against the Wind. Federal Reserve Bank of Chicago, Working Paper, 2017-16.
- Aruoba, S. B., P. Cuba-Borda and F. Shorfeide. (2018) Macroeconomic dynamics near the ZLB: A tale of two countries. *Review of Economic Studies* 85(1), 87–118.
- Balke, N. S. and M. E. Wohar. (2009) Market fundamentals versus rational bubbles in stock prices: A Bayesian perspective. *Journal of Applied Econometrics* 24(1), 35–75.
- Benati, F. and C. Surico. (2009) VAR analysis and the great moderation. *American Economic Review* 99(4), 1636–1652.
- Beqiraj, E., V. Patella and M. Tancioni. (2021) Fiscal stance and sovereign risk pass-through. *Economic Modelling* 102, 105573.
- Bernanke, B. S. and K. N. Kuttner. (2005) What explains the stock market reaction to federal reserve policy? *Journal of Finance* 60(3), 1221–1256.
- Bernanke, B. S. and M. Gertler. (1999) Monetary policy and asset price volatility. *Economic Review, Federal Reserve Bank of Kansas City* 84, 17–51.
- Bernanke, B. S. and M. Gertler. (2001) Should central banks respond to movements in asset prices? *American Economic Review* 91(2), 253–257.
- Bianchi, F. (2013) Regime switches, agents' beliefs, and post-world war II U.S. macroeconomic dynamics. *Review of Economic Studies* 80, 463–490.
- Bianchi, F. and C. Ilut. (2017) Monetary/fiscal policy mix and agents' beliefs. *Review of Economic Dynamics* 26, 113–139.
- Bianchi, F., M. Lettau and S. C. Ludvigson. (2022) Monetary policy and asset valuation. *The Journal of Finance* 77(2), 967–1017.
- Brooks, C. and A. Katsaris. (2005) A three-regime model of speculative behaviour: Modelling the evolution of the S&P500 composite index. *The Economic Journal* 115(505), 767–797.
- Brunnermeier, M. K. (2001) *Asset Pricing Under Asymmetric Information: Bubbles, Crashes, Technical Analysis, and Herding*. Oxford: Oxford University Press.



- Caldara, D. and E. Herbst. (2019) Monetary policy, real activity, and credit spreads: Evidence from Bayesian proxy SVARs. *American Economic Journal: Macroeconomics* 11(1), 157–192.
- Campbell, J. Y. and R. J. Shiller. (1988) The dividend-price ratio and expectations of future dividends and discount factors. *Review of Financial Studies* 1(3), 195–228.
- Carvalho, V. M., A. Martin and J. Ventura. (2012) Understanding bubbly episodes. *American Economic Review* 102(3), 95–100.
- Chan, J. C. C. and C. Santi. (2021) Speculative bubbles in present-value models: A Bayesian Markov-switching state space approach. *Journal of Economic Dynamics and Control* 115, 767–797.
- Chib, S. (1995) Marginal likelihood from the Gibbs output. *Journal of the American Statistical Association* 90(432), 1313–1321.
- Christiano, L. J., M. Eichenbaum and C. L. Evans. (2005) Nominal rigidities and the dynamic effects of a shock to monetary policy. *Journal of Political Economy* 113(1), 1–45.
- Ciccarone, G., F. Giuli and E. Marchetti. (2019) Should central banks lean against the bubble? The monetary policy conundrum under credit frictions and capital accumulation. *Journal of Macroeconomics* 59, 195–216.
- Cochrane, J. H. (2001) *Asset Pricing*. Princeton, NJ: Princeton University Press.
- Corsi, F. and D. Sornette. (2014) Follow the money: The monetary roots of bubbles and crashes. *International Review of Financial Analysis* 32, 47–59.
- Davig, T. and E. M. Leeper. (2007) Generalizing the Taylor principle. *American Economic Review* 97(3), 608–617.
- Diba, B. T. and H. I. Grossman. (1988) Explosive rational bubbles in stock prices? *American Economic Review* 78(3), 520–530.
- Driffill, J. and M. Sola. (1998) Intrinsic bubbles and regime-switching. *Journal of Monetary Economics* 42(2), 357–373.
- Ender, Z. and H. Hakenes. (2021) Market depth, leverage, and speculative bubbles. *Journal of the European Economic Association* 19(5), 2577–2621.
- Enoksen, F. A., C. J. Landsnes, K. P. Lucivjanska and P. Molnar. (2020) Understanding risk of bubbles in cryptocurrencies. *Journal of Economic Behavior and Organization* 176, 129–144.
- Estrella, A. (2015) The price puzzle and VAR identification. *Macroeconomic Dynamics* 19(8), 1880–1887.
- Fama, E. (1991) Efficient capital markets: II. *The Journal of Finance* 5(5), 1575–1617.
- Farmer, R., D. Waggoner and T. Zha. (2009) Understanding regime-switching rational expectations models. *Journal of Economic Theory* 144(5), 1849–1867.
- Fernández-Villaverde, J., P. Guerron-Quintana and D. F. Rubio-Ramirez. (2010) Fortune or virtue: Time-variant volatilities versus parameter drifting in U.S. data. NBER Working Paper, 15928.
- Foerster, A., J. Rubio-Ramirez, D. Waggoner and T. Zha. (2016) Perturbation methods for Markov-switching DSGE models. *Quantitative Economics* 7(2), 637–669.
- Freixas, X. and J. C. Rochet. (1997) *Microeconomics of Banking*. Cambridge, MA: MIT Press.
- Fusari, N., R. Jarrow and S. Lamichhane. (2022) Testing for Asset Price Bubbles Using Options Data. Johns Hopkins Carey Business School Research Paper.
- Gali, J. (2014) Monetary policy and rational asset price bubbles. *American Economic Review* 104(3), 721–752.
- Gali, J. (2021) Monetary policy and bubbles in a new Keynesian model with overlapping generations. *American Economic Journal: Macroeconomics* 13(2), 121–167.
- Gali, J. and L. Gambetti. (2015) The effects of monetary policy on stock market bubbles: Some evidence. *American Economic Journal: Macroeconomics* 7(1), 233–257.
- Gelfand, A. E. and D. K. Dey. (1994) Bayesian model choice: Asymptotics and exact calculations. *Journal of the Royal Statistical Society* 56, 501–514.
- Giglio, S., M. Maggiori and J. Stroebel. (2016) No-bubble condition: Model-free tests in housing markets. *Econometrica* 84(3), 1047–1091.
- Greenspan, A. (2002) Opening remarks. In: *Federal Reserve Bank of Kansas City Economic Symposium Rethinking Stabilization Policy*, pp. 1–10.
- Greenwood, R., A. Shleifer and Y. You. (2019) Bubbles for Fama. *Journal of Financial Economics* 131(1), 20–43.
- Hall, S. J., Z. Psaradakis and M. Sola. (1999) Detecting periodically collapsing bubbles: A Markov-switching unit root test. *Journal of Applied Econometrics* 14, 143–154.
- Herwartz, H. and J. Roestel. (2022) Asset prices, financial amplification and monetary policy: Structural evidence from an identified multivariate GARCH model. *Journal of International Financial Markets, Institutions and Money* 78, 101568.
- Hubrich, K. and R. J. Tetlow. (2015) Financial stress and economic dynamics: The transmission of crises. *Journal of Monetary Economics* 70, 100–115.
- Ikeda, D. and T. Phan. (2016) Toxic asset bubbles. *Economic Theory* 61, 241–271.
- Jarrow, R. (2016) Testing for asset price bubbles: Three new approaches. *Quantitative Finance Letters* 4(1), 4–9.
- Jarrow, R. A. and S. S. Kwok. (2021) Inferring financial bubbles from option data. *Journal of Applied Econometrics* 36(7), 1013–1046.
- Jarrow, R. A., Y. Kchia and P. Protter. (2011a) How to detect an asset bubble. *Journal on Financial Mathematics* 2(1), 839–865.
- Jarrow, R. A., Y. Kchia and P. Protter. (2011b) Is there a bubble in LinkedIn's stock price? *Journal of Portfolio Management* 38(1), 125–130.

- Jarrow, R. and S. Lamichhane. (2022) Risk premia, asset price bubbles, and monetary policy. *Journal of Financial Stability* 60, 101005.
- Judd, K. (1998) *Numerical Methods in Economics*. Cambridge, MA: MIT Press.
- Litterman, R. (1986) Forecasting with Bayesian vector autoregressions: Five years of experience. *Journal of Business and Economic Statistics* 4, 25–38.
- Liu, Z., D. F. Waggoner and T. Zha. (2011) Sources of macroeconomic fluctuations: A regime-switching DSGE approach. *Quantitative Economics* 2, 251–301.
- Mailh, J. (2015) Efficient Perturbation Methods for Solving Regime-Switching DSGE Models. Norges Bank Working Paper, 1.
- Mankiw, G. and R. Reis. (2002) Sticky information versus sticky prices: A proposal to replace the new Keynesian Phillips curve. *Quarterly Journal of Economics* 117, 1295–1328.
- Martin, A. and J. Ventura. (2015) Managing credit bubbles. *Journal of the European Economic Association* 14(3), 753–789.
- Martin, A. and J. Ventura. (2016) The international transmission of credit bubbles: Theory and policy. *Journal of Monetary Economics* 76, 537–556.
- Meng, X. and W. H. Wong. (1996) Simulating ratios of normalizing constants via a sample identity: A theoretical exploration. *Statistica Sinica* 6, 831–860.
- Miao, J. and P. Wang. (2018) Asset bubbles and credit constraints. *American Economic Review* 108(9), 2590–2628.
- Miao, J., Z. Shen and P. Wang. (2019) Monetary policy and rational asset price bubbles: Comment. *American Economic Review* 109(5), 1969–1990.
- Michaelides, P. G., E. G. Tsionas and K. N. Konstantakis. (2016) Non-linearities in financial bubbles: Theory and Bayesian evidence from S&P500. *Journal of Financial Stability* 24, 61–70.
- Nneji, O. (2015) Liquidity shocks and stock bubbles. *Journal of International Financial Markets, Institutions and Money* 35, 132–146.
- Patella, V. and M. Tancioni. (2021) Confidence swings in sovereign risk dynamics. *Structural Change and Economic Dynamics* 56, 195–206.
- Phillips, P. C., S. Shi and J. Yu. (2015a) Testing for multiple bubbles: Historical episodes of exuberance and collapse in the S&P 500. *International Economic Review* 56(4), 1043–1078.
- Phillips, P. C., S. Shi and J. Yu. (2015b) Testing for multiple bubbles: Limit theory of real-time detectors. *International Economic Review* 56(4), 1079–1133.
- Protter, P. (2013) A mathematical theory of financial bubbles. In: *Paris-Princeton Lectures on Mathematical Finance 2013, Lecture Notes in Mathematics*, vol. 2081, pp. 1–108. Cham: Springer.
- Schmitt-Grohé, S. and M. Uribe. (2004) Solving dynamic general equilibrium models using a second-order approximation to the policy function. *Journal of Economic Dynamics and Control* 28(4), 755–775.
- Shorfeide, F. (2005) Learning and monetary policy shifts. *Review of Economic Studies* 8(2), 392–419.
- Sims, C. (1992) Interpreting the macroeconomic time series facts: The effects of monetary policy. *European Economic Review* 36, 2–16.
- Sims, C. A., D. F. Waggoner and T. Zha. (2008) Methods for inference in large multiple-equation Markov-switching models. *Journal of Econometrics* 146(2), 255–274.
- Sims, C. A. and T. Zha. (2006) Where there regime switches in U.S. monetary policy? *American Economic Review* 96(1), 54–81.
- Taylor, J. B. (2008) The costs and benefits of deviating from the systematic component of monetary policy. In: Keynote Address at the Federal Reserve Bank of San Francisco, Conference on Monetary Policy and Asset Markets.
- Tirole, J. (1985) Asset bubbles and overlapping generations. *Econometrica* 53(6), 1499–1528.
- Weil, P. (1987) Confidence and the real value of money in an overlapping generations economy. *The Quarterly Journal of Economics* 102(1), 1–22.
- Wu, J. C. and F. D. Xia. (2016) Measuring the macroeconomic impact of monetary policy at the zero lower bound. *Journal of Money, Credit, and Banking* 48(2-3), 253–291.

## Appendices

### A. Data

We use quarterly US data spanning the period 1960–2019. The six variables included in the MS-SVAR are: log-real GDP  $y_t$ , log-real dividends  $d_t$ , the GDP deflator inflation  $\pi_t^y$ , the inflation rate for non-energy commodities  $\pi_t^c$ , the federal funds rate  $r_t$ , and the log-real S&P500 index  $q_t$ . For the policy rate, we control for non-conventional measures by taking the Wu and Xia (2016) shadow interest rate over the 2009–2016 time interval. Table A1 below summarizes the variable's data sources and their transformations in the estimates.

**Table A1.** Data sources and their transformations

Variable	Definition	Source	Transf.
$y_t$	Real GDP	FRED	$\log(Y_t)$
$d_t$	Real SP Comp. dividends	Shiller' Stock Market data	$\log\left(\frac{D_t}{P_t^y}\right)$
$\pi_t^y$	GDP-deflator inflation	FRED	$\Delta \log(P_t^y)$
$\pi_t^c$	Inflation on non energy comm.	WB - The Pink Sheet	$\Delta \log(P_t^c)$
$r_t$	Federal funds rate (shadow rate)	FRED (Wu and Xia, 2016)	—
$q_t$	Real SP Comp. stock price	Shiller' Stock Market data	$\log\left(\frac{Q_t}{P_t^y}\right)$

**B. MS-SBVAR. Model selection**

We select the best-fit model by comparing the fit of several Markov-switching SVARs through marginal data densities (MDD), namely the probability of the data after integrating out the parameters in the model:

$$p(Y_T) = \int p(Y_T|\theta)p(\theta)d\theta$$

where  $\theta$  is the vector of the SVAR parameters,  $p(Y_T|\theta)$  is the likelihood function, and  $p(\theta)$  is the priors. The modified harmonic mean (MHM) method of Gelfand and Dey (1994) is based on the following theorem:

$$p(Y_T)^{-1} = \int \frac{h(\theta)}{p(Y_T|\theta)p(\theta)}p(\theta|Y_T)d\theta$$

where  $p(\theta|Y_T)$  is the posterior distribution, and  $h(\theta)$  is a weighting function chosen to deliver the following Monte Carlo integration:

$$p(Y_T)^{-1} = \frac{1}{N} \sum_{i=1}^N \frac{h(\theta)}{p(Y_T|\theta)p(\theta)}$$

Alternative methods to compute the MDD differ in the weighting function used for this numerical approximation since, in Markov-switching models, the posterior is highly multimodal and contains zeros in the interior points of the parameter space. In Table B1, we, therefore, evaluate MDDs over three metrics: the new modified harmonic mean method (MHM) suggested by Sims and Zha (2006), Meng and Wong (1996)'s bridge sampling method, and the Muller's method [Liu et al. (2011)]. They are compared to the fit of a constant-coefficient model using the Chib (1995)'s method.<sup>27</sup>

A set of results can be extracted. First, all models with time-varying properties outperform the linear model. Second, a model with regime-switching variances with up to three states ( $3\xi^v$ ) improves substantially over the linear case but is dominated by models with regime switches in both the systematic and stochastic components. Third, introducing MS dynamics in the systematic model component featuring the real sector only worsens model fit when compared to the model with variance regimes only while introducing nonlinearities in the monetary policy or the asset price equations improves model performance ( $3\xi^v 2\xi_r^c, 3\xi^v 2\xi_q^c$ ). Finally, it is the interaction of monetary and financial structural dynamics ( $3\xi^v 2\xi_{r,q}^c$ ) that best describes our data, outperforming the independent alternative ( $3\xi^v 2\xi_r^c 2\xi_q^c$ ).

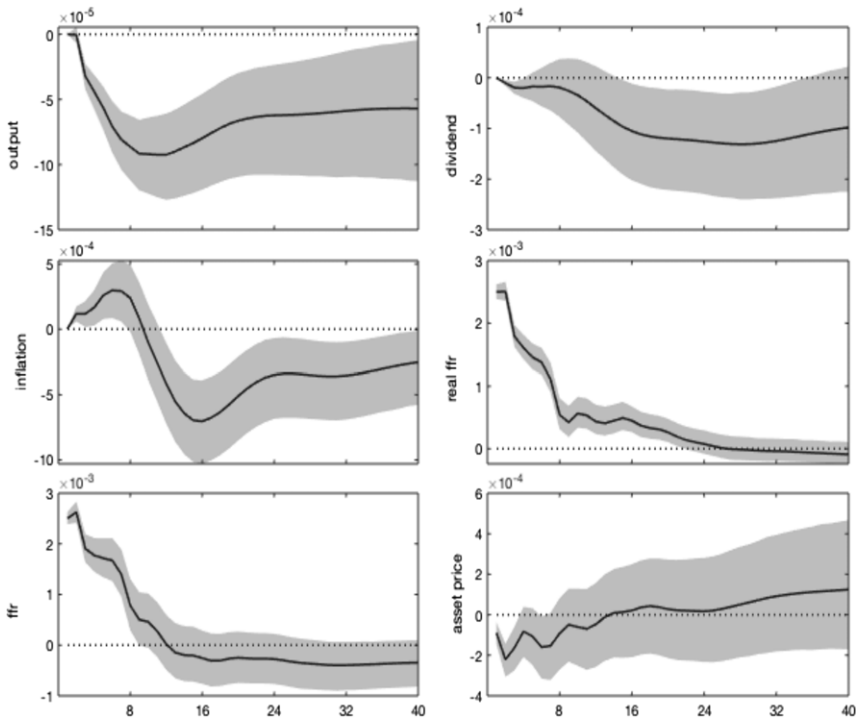
**Table B1.** Marginal Data Densities for model selection

Method—Model	Linear	$2\xi^V$	$3\xi^V$		
Chib	2906.6				
SWZ MDD		3104.5	3214.3		
Muller MDD		3104.9	3213.0		
Bridge MDD		3104.6	3211.7		
<b>Method—Model</b>	$3\xi^V 2\xi_r^c$	$3\xi^V 2\xi_r^c 2\xi_q^c$	$3\xi^V 2\xi_{r,q}^c$	$3\xi^V 2\xi_q^c$	$3\xi^V 2\xi_{real}^c$
SWZ MDD	3259.5*	3275.8*	3243.3	3241.7	3230.3
Muller MDD	3219.4	3219.4	3222.4	3216.6	3197.6
Bridge MDD	3212.7	3212.7	3221.2	3215.3	3196.4

The table reports the log MDDs associated with different models under the new modified harmonic mean, the bridge, and Müller methods. The Markov-switching models under assessment are defined as follows: a two-state Markov chain on all shock variances ( $2\xi^V$ ); a three-state chain on all shock variances ( $3\xi^V$ ); two independent Markov chains, one three-state chain on all shock variances and a two-state chain on the interest rate equation ( $3\xi^V, 2\xi_r^c$ ); three independent Markov chains, one three-state chain on all shock variances, a two-state chain on the interest rate equation and one chain governing asset price equation ( $3\xi^V 2\xi_r^c 2\xi_q^c$ ); two independent Markov chains, one three-state chain on all shock variances and a two-state chain jointly on the interest rate and the asset price equations ( $3\xi^V, 2\xi_{r,q}^c$ ); two independent Markov chains, one three-state chain on all shock variances and a two-state chain on the asset price equation ( $3\xi^V, 2\xi_r^c$ ); two independent Markov chains, one three-state chain on all shock variances and a two-state chain on the equations defining the real-sector variables ( $3\xi^V, 2\xi_{real}^c$ ).

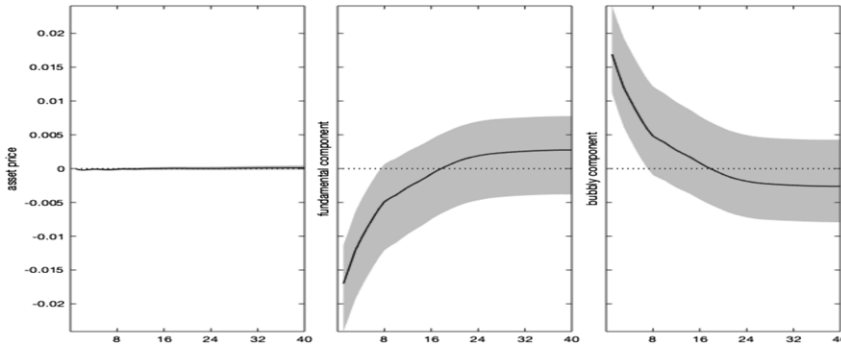
**C. MS-SVAR. Linear model**

We estimate a linear BVAR using the same data and identification strategy as in the Markov-switching model. In Figures C1 and C2 we simulate a 1% monetary policy shock and show that



**Figure C1.** Monetary policy shock. Impulse responses.

Notes: The figure shows the impulse responses to a 1% monetary policy shock. Shaded areas denote 68% credibility sets.



**Figure C2.** Monetary policy shock. Impulse responses: stock price decomposition.

Notes: The figure shows the impulse responses of asset prices, and their decomposition in a fundamental and bubbly component, to a 1% monetary policy shock. Shaded areas denote 68% credibility sets.

asset price fundamentals (dividends, real rates) react more weakly in a linear world, displaying moderate and less persistent responses. Moreover, the overall S&P500 response is negligible, leading to a residual bubble response completely offsetting the fundamental one. These results highlight that introducing regime changes amplifies the contribution of the fundamental asset price component to the build-up of the bubble.

**D. MS-SBVAR. Time-varying equity premium**

This section examines how our estimated deviation between observed stock prices and the measured fundamental component should be interpreted compared to the one resulting from considering a time-varying equity premium.

By computing the log-linearized excess stock returns as

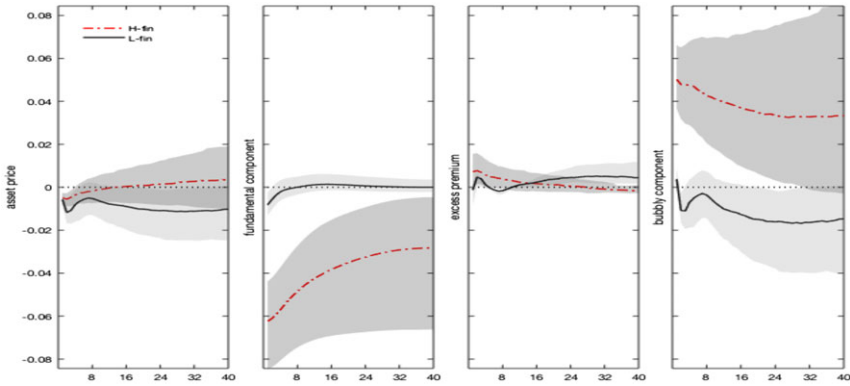
$$z_{t+1} = \Delta q_{t+1} + (1 - \Delta)d_{t+1} - q_t - r_t$$

Gali and Gambetti (2015) show that the dynamic response of the stock prices to an exogenous monetary policy shock as comprising the response of the equity premium:

$$\frac{\partial q_{t+k}}{\epsilon_t^m} = \frac{\partial q_{t+k}^F}{\partial \epsilon_t^m} - \sum_{j=0}^{\infty} \Delta^j \frac{\partial z_{t+k+j+1}}{\partial \epsilon_t^m} + \frac{\partial q_t^B}{\partial \epsilon_t^m}$$

where  $\partial q_{t+k}^F / \partial \epsilon_t^m = \sum_{j=0}^{\infty} \Delta^j (1 - \Delta) \partial d_{t+k+j+1} / \partial \epsilon_t^m$ . The bubble response and the excess stock returns explain the gap between the observed asset price and its fundamental component. If excess returns respond positively to the monetary policy shock, the bubble response is higher than the one computed under the assumption of risk neutrality. Hence, the presence of a risk premium downplays the bubble evidence only if it declines substantially and persistently in response to a tightening of monetary conditions.

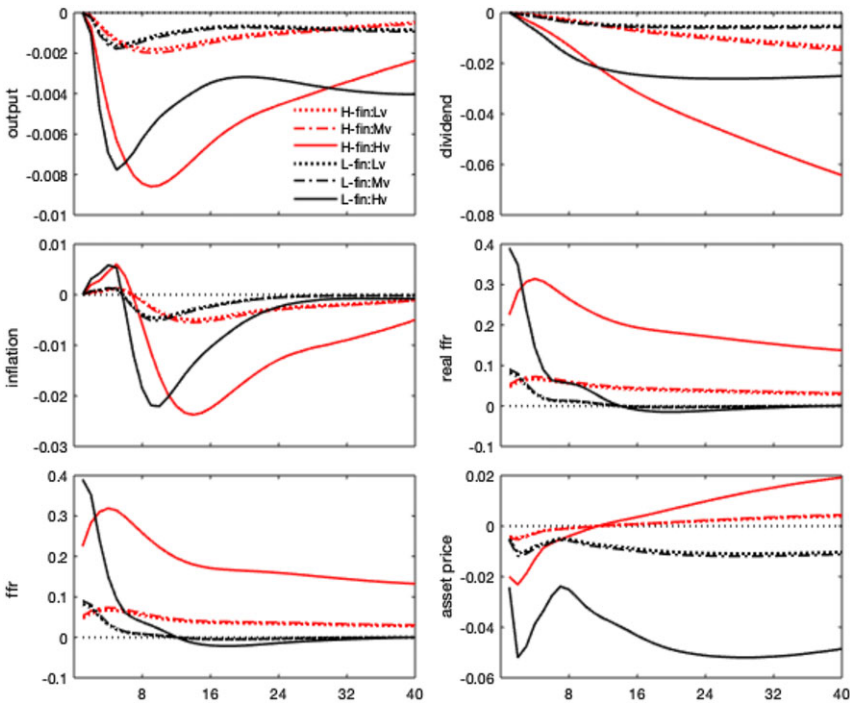
In line with the existing evidence [Bernanke and Kuttner (2005) and Caldara and Herbst (2019)], Figure D1 documents a positive response of the excess S&P500 stock return to the monetary policy shock. This result reflects the premium agents require for the higher risk they carry by investing in risky assets due to bonds becoming more attractive relative to stocks. Under the high finance regime, the positive response of the bubble more than offsets the positive risk premium response, which in turn enters negatively into the asset price response derivation. Hence, our evidence is emphasized in the presence of a risk premium component.



**Figure D1.** Monetary policy shock. Impulse responses: stock price decomposition.  
*Notes:* The figure shows the impulse responses of asset prices, and their decomposition in a fundamental and bubbly component, to a 1% monetary policy shock. Differences across regimes only reflect nonlinearities in the monetary policy and asset price equations, driven by  $\xi^{mf}$ . Shaded areas denote 68% credibility sets.

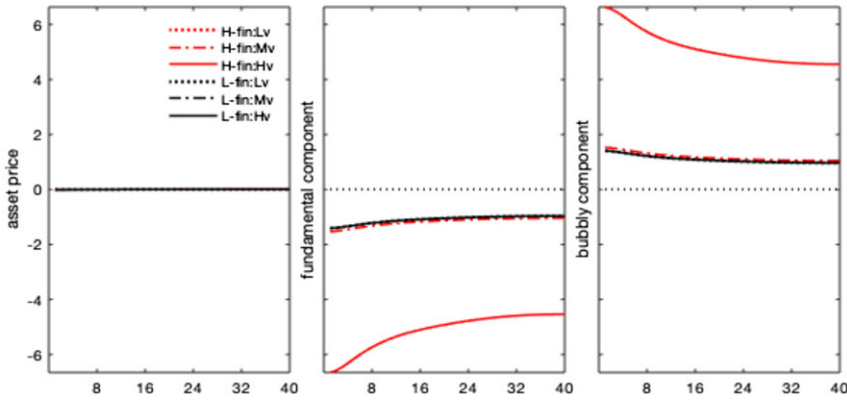
**E. MS-SBVAR. Impulse responses with variance regimes**

In the VAR, regimes characterize the shocks’ size and their transmission mechanism, thus affecting both quantitatively and qualitatively model dynamics. Section 2.4 shows impulse responses to a 1% monetary policy shock in all regimes. This normalization rules out the impact of variance



**Figure E1.** Monetary policy shock. Impulse responses.  
*Notes:* The figure shows the impulse responses to a monetary policy shock in the six combinations of regimes, hence driven by the composite Markov process  $\xi = \{\xi^{mf}, \xi^v\} \in \{H\text{-finance: L-variance, H-finance: M-variance, H-finance: H-variance, L-finance: L-variance, L-finance: L-variance, L-finance: L-variance}\}$ .





**Figure E2.** Monetary policy shock. Impulse responses: stock price decomposition.  
*Notes:* The figure shows the impulse responses of asset prices and their decomposition in a fundamental and bubbly component, to a monetary policy shock, in the six combinations of regimes, hence driven by the composite Markov process  $\xi = \{\xi^{mf}, \xi^v\} \in \{H\text{-finance: L-variance, H-finance: M-variance, H-finance: H-variance, L-finance: L-variance, L-finance: M-variance, L-finance: H-variance}\}$ .

regimes and allows us to focus on systematic nonlinearities, namely the monetary-financial regimes. However, the combination of variance and coefficient regimes identifies six regions over the history of the data sample. Figures E1 and E2 display impulse responses accounting for each state.

The state of high shocks’ variance vastly amplifies the size of impulse responses, both under the high finance and low finance regimes. However, the high finance-high variance state—prevailing in the 1970–1975 and 2008–2009 periods—adds persistence dynamics to the amplification, resulting in significant reversals in the fundamental/bubbly composition of the asset price response.

**F. MS-SBVAR. Forecast error variance decomposition**

Table F1 reports the forecast error variance decomposition for each state in the model systematic component, indicating the fraction of variance of model variables explained by the monetary policy shocks on impact at the 1-year and 5-year time horizons. The displayed results are for the low variance state only. The FEVDs show that the relevance of the policy shock is higher under the

**Table F1.** Forecast error variance decomposition—monetary policy shock. Low-variance state

	Monetary-financial states					
	L-fin	H-fin	L-fin	H-fin	L-fin	H-fin
	<b>Output</b>		<b>Dividends</b>		<b>Inflation-GDP</b>	
1qr	0.101	0.050	0.091	0.052	0.004	0.002
1yrs	2.064	1.462	0.407	0.267	0.057	0.032
5yrs	0.892	2.625	1.164	3.037	0.251	0.600
	<b>Inflation-commodity</b>		<b>Federal funds rate</b>		<b>Stock price</b>	
1qr	0.022	0.008	43.992	63.622	0.875	1.019
1yr	0.150	0.081	14.689	27.206	0.873	0.754
5yrs	0.368	0.481	4.139	6.428	0.455	0.845

The table presents the fraction of variances (computed from the posterior median) of model variables explained by the monetary policy shock at various horizons under each regime. The results are for the low-variance state.

high finance state in the long term, being around 3% after 5 years when a monetary shock is more persistent, generates amplified effects, and stock prices contain an higher bubble share.

**G. A model for bubbles**

*G.1. Savers/lenders*

The following specifies the preferences of the representative saver utility function:<sup>28</sup>

$$U_t^s = \frac{(C_{1,t}^s)^{1-\gamma_s} - 1}{1 - \gamma_s} + \beta \frac{(\mathbb{E}_t C_{2,t+1}^s)^{1-\gamma_s} - 1}{1 - \gamma_s} \tag{G7}$$

where  $\gamma_s \in [0;1)$  is the inverse of the intertemporal elasticity of substitution,  $\beta \in (0; 1)$  is the subjective discount factor, and  $\mathbb{E}_t$  represents the (conditional) expectation operator.  $C_{1,2}^s$  is an index of the saver’s aggregate consumption of the final goods in the two periods:

$$C_{1,t}^s = \left( \int_0^1 C_{1,t}^s(j)^{\frac{\epsilon-1}{\epsilon}} dj \right)^{\frac{\epsilon}{\epsilon-1}} ; \quad C_{2,t+1}^s = \left( \int_0^1 C_{2,t+1}^s(j)^{\frac{\epsilon-1}{\epsilon}} dj \right)^{\frac{\epsilon}{\epsilon-1}} \tag{G8}$$

where  $\epsilon$  is the elasticity of substitution between the  $j$ -types of final goods.

The budget constraints are

$$C_{1,t}^s = \frac{W_t}{P_t} - L_t^{S_{real}}; \quad C_{2,t+1}^s = L_t^{S_{real}} \frac{P_t}{P_{t+1}} (1 + i_t) + \Pi_{t+1}^R \tag{G9}$$

where  $L_t^{S_{real}}$  is the amount of savings,  $\frac{W_t}{P_t}$  is the real wage, and  $\Pi_{t+1}^R$  are real profits.

The optimization problem of savers is then:

$$\max_{C_{1,t}^s, C_{2,t+1}^s, L_t^{S_{real}}} U_t^s \text{ s.t. (G9)}$$

from the first-order conditions of this problem, the supply of funds (expressed in real terms) can be obtained:

$$L_t^{S_{real}} = \frac{\beta^{\frac{1}{\gamma_s}}}{\beta^{\frac{1}{\gamma_s}} + (\mathbb{E}_t R_{t+1})^{1-\frac{1}{\gamma_s}}} \left( \frac{W_t}{P_t} - \frac{\mathbb{E}_t (\Pi_{t+1}^R)}{\beta^{\frac{1}{\gamma_s}} (\mathbb{E}_t R_{t+1})^{\frac{1}{\gamma_s}}} \right) \tag{G10}$$

where  $R_t = \frac{P_t}{P_{t+1}} (1 + i_t)$  is the real interest rate.

*G.2. Borrowers/investors*

We assume that, differently from savers, borrowers leave resources  $S_{t+1} \geq 0$  to the next generation:<sup>29</sup>

$$U_t^b = \frac{(C_{1,t}^b)^{1-\gamma_b} - 1}{1 - \gamma_b} + \beta \frac{(\mathbb{E}_t C_{2,t+1}^b)^{1-\gamma_b} - 1}{1 - \gamma_b} + \eta \frac{(\mathbb{E}_t S_{t+1})^{1-\gamma_b} - 1}{1 - \gamma_b} \tag{G11}$$

where  $\gamma_b \in (0; 1)$  can be different from  $\gamma_s$  and  $\eta > 0$ . The young borrower can also use part of his/her  $\epsilon$  resources to buy investment  $I_t(j)$  goods whose aggregate index is  $I_t = \left( \int_0^1 I_t(j)^{\frac{\epsilon-1}{\epsilon}} dj \right)^{\frac{\epsilon}{\epsilon-1}}$ :

The borrowers' budget constraints can be written as

$$C_{1,t}^b = \frac{L_t^D}{P_t} + S_t - Q_t - I_t - (1 - \delta_K) K_t; \tag{G12}$$

$$C_{2,t+1}^b = r_{t+1}^k K_{t+1} + (1 - \delta_K) K_{t+1} - S_{t+1} + R_{t+1}^B Q_t + Q_{t+1}^N - \frac{1 + i_t^L}{P_{t+1}} L_t^D \tag{G13}$$

where  $L_t^D$  is the agents' demand for funds;  $\frac{1+i_t^L}{P_{t+1}}L_t^D$  is the amount to be repaid when old;  $Q_t$  is the amount of the bubble purchased when young and  $R_{t+1}^B Q_t + Q_{t+1}^N$  represents the accruals from selling the bubble when old, i.e., the bubble purchased when young, augmented with its factor of return, plus the value of the newly created (and sold) bubble. The rate  $r_{t+1}^k$  is the rental rate of physical capital, so that  $r_{t+1}^k K_{t+1}$  is the physical capital income obtained by the old agent. The amount  $(1 - \delta_K) K_{t+1}$  represents the value of the remaining capital stock [net of depreciation  $\delta_K \in (0; 1)$ ] that old agents sell to young agents.

Finally, the following capital accumulation constraint holds:

$$K_{t+1} = I_t + (1 - \delta_K) K_t \tag{G14}$$

*Credit market imperfections.* Credit market imperfections affect the behavior of banks, which may not always obtain the full repayment of the loans (capital plus interest) provided to the borrowers,  $L_t^D (1 + i_t^L)$ , due, e.g., to a risk of bankruptcy leading to default or forms of misbehavior by the borrowers. Consequently, borrowers cannot obtain loans without providing credit intermediaries with collaterals given by the sum of a fraction  $\phi \in (0; 1)$  of their future resources and the re-sell value of their bubbly asset  $B_t$ .

The banks' problem can then be written as

$$\max_{L_t^D} \Pi_t^{\text{bank}} = (1 + i_t^L) L_t^D - (1 + i_t) D_t; \text{ s.t. } D_t = L_t^D$$

and the optimality condition implies:  $i_t^L = i_t$ .

Being  $D_t = L_t^D = L_t^S$ , it follows that the borrowing constraint—which we here assume to hold with equality—can be written as

$$\frac{(1 + i_t)}{P_{t+1}} L_t^D = \phi \left( r_{t+1}^k + 1 - \delta_K \right) K_{t+1} + R_{t+1}^B Q_t + Q_{t+1}^N \tag{G15}$$

The optimization problem of the borrowers is

$$\max_{I_t, L_t^D, Q_t, Q_{t+1}^N, S_{t+1}} \mathcal{U}^b \text{ s.t. (G12), (G13), (G15)} \tag{G16}$$

If the collateral constraint always holds, by using equation (G15) the demand for credit funds, rewritten with the appropriate expectation operators, will be:

$$L_t^{D, \text{real}} = \frac{1}{\mathbb{E}_t R_{t+1}} \left[ \phi \mathbb{E}_t \left( r_{t+1}^k K_{t+1} \right) + \phi (1 - \delta_K) K_{t+1} + \mathbb{E}_t Q_{t+1} \right] \tag{G17}$$

Then, the first-order conditions of equation (G16) deliver the equilibrium condition in asset (and credit) markets:

$$\mathbb{E}_t R_{t+1}^B = \mathbb{E}_t R_{t+1} \tag{G18}$$

and in investments:

$$K_{t+1} = \frac{\beta^{\frac{1}{\gamma_b}} \left( L_t^{D, \text{real}} - Q_t + S_t \right) + \left[ (1 - \phi) \left( \mathbb{E}_t R_t^K \right) \right]^{-\frac{1}{\gamma_b}} S_{t+1}}{\beta^{\frac{1}{\gamma_b}} + \left[ (1 - \phi) \left( \mathbb{E}_t R_t^K \right) \right]^{1 - \frac{1}{\gamma_b}}} \tag{G19}$$

where the return factor is  $R_t^K = r_t^k + 1 - \delta_K$ . The latter implies that:

$$\mathbb{E}_t R_{t+1}^K > \mathbb{E}_t R_{t+1} = \mathbb{E}_t R_{t+1}^B$$

which must be satisfied in equilibrium.<sup>30</sup>

Finally, the first-order condition of (G16) with respect to  $S_{t+1}$  (recall that  $S_t$  is predetermined for the young agent) leads to:

$$S_t = (1 - \phi) \left[ 1 + \left( \frac{\beta}{\eta} \right)^{\frac{1}{\nu_b}} \right]^{-1} R_t^K K_t$$

that is, the amount of the bequest is proportional to the net resources  $R_t^K K_t$  deriving from capital ownership.

### G.3. Intermediate and final firms

*Intermediate firm.* The firm’s production technology is of the Cobb–Douglas type:

$$X_t = F(K_t; N_t) = AK_t^\alpha (g^t N_t)^{1-\alpha}; \quad \alpha \in (0; 1) \tag{G20}$$

where  $A > 0$  is a scale factor. We assume that the economy grows at rate  $g > 1$ , according to an exogenous (Harrod-neutral) technical progress. The intermediate firm profit, expressed in real terms, is

$$\Pi_t^X = \frac{P_t^X}{P_t} AK_t^\alpha (g^t N_t)^{1-\alpha} - \frac{W_t}{P_t} N_t - r_t^k K_t$$

where  $P_t^X/P_t$  is the real price of the intermediate good. The demand functions for inputs stemming from profit maximization (with  $N_t = 1$ ) are as follows:

$$\begin{aligned} \frac{W_t}{P_t} &= g^t (1 - \alpha) A \left( \frac{K_t}{g^t} \right)^\alpha \frac{P_t^X}{P_t} \\ r_t^k &= \alpha A \left( \frac{K_t}{g^t} \right)^{\alpha-1} \frac{P_t^X}{P_t} \end{aligned}$$

*Final goods producers.* The production function of the  $j$ th producer is linear in the input  $X_t(j)$ :

$$Y_t(j) = X_t(j) \tag{G21}$$

and the monopolist faces a demand:

$$Y_t(j) = \left( \frac{P_t(j)}{P_t} \right)^{-\epsilon} (C_t + I_t), \quad \text{where } C_t \equiv C_{1,t}^b + C_{2,t}^b + C_{1,t}^s + C_{2,t}^s \tag{G22}$$

The final producer’s real profit is  $\Pi^R(j)_t = \frac{P_t(j)}{P_t} Y_t(j) - \frac{P_t^X}{P_t} X_t(j)$ , where  $\frac{P_t^X}{P_t} X_t(j)$  is the real cost of production. Hence, the firm’s marginal cost is  $mc_t = \frac{P_t^X}{P_t}$ . The monopolist sets the price  $P_t^o(j)$  so as to solve the problem:

$$\max_{P_t^o(j)} \Pi^R(j)_t \text{ s.t. (G21), (G22)}$$

Hence, the real price of the individual good  $j$  writes:

$$\frac{P_t^o(j)}{P_t} = \left( \frac{\epsilon}{\epsilon - 1} \right) mc_t. \tag{G23}$$

As we assume nominal rigidities, in every  $t$ , some of the prices  $P_t^o(j)$  can be equal to a value set some period in the past. We may hence assume that the average price index  $P_t$  is a function not only of the current  $mc_t$  but also of the level of prices and marginal cost that were expected in the past.<sup>31</sup>

$$P_t = P(mc_t; \mathbb{E}_{t-1-s} P_t; \mathbb{E}_{t-1-s} mc_t)_{s=0,1,2,\dots,\infty} \tag{G24}$$

Under a flexible price regime in which  $P_t^o(j) = P_t$ , equation (G23) univocally sets the value of the marginal cost  $mc_t = \mu = 1 - \frac{1}{\epsilon} \in (0, 1), \forall t$ , where  $\frac{1}{\mu}$  is the mark-up over production costs.

G.4. Monetary policy

In order to calculate the predicted dynamic responses of the model economy to an exogenous shock to the nominal interest rate ( $i_t$ ), we assume that the monetary authority sets the policy rate according to equation (5), discussed in the main text.

G.5. Stationary state

The economy converges to one unique steady state, where the endogenous model variables are constant through time, and prices are fully flexible, so that  $P(j) = P, mc = \mu$  and  $y(j) = y = \int_0^1 y(j) dj = \bar{y} = x$ , zero trend inflation is assumed:  $\pi = 0$ , and the bubble-to-output share is at its ergodic level,  $\omega = \bar{\omega}$ .<sup>32</sup> The latter is equal to the weighted average of the two state-specific shares  $\omega^{mf}$ , where the weights are the ergodic states' probabilities.

The equilibrium system can be reduced to the following set of equations:

$$\begin{aligned}
 gk &= \frac{(l^D - q) \left( \eta^{\frac{1}{\gamma_b}} + \beta^{\frac{1}{\gamma_b}} \right) + \eta^{\frac{1}{\gamma_b}} (1 - \phi) (\mu \alpha A k^\alpha + 1 - \delta_K) k}{\left( \eta^{\frac{1}{\gamma_b}} + \beta^{\frac{1}{\gamma_b}} \right) + [(1 - \phi) (\mu \alpha A k^\alpha + 1 - \delta_K)]^{1 - \frac{1}{\gamma_b}}} \tag{G25} \\
 l^S &= \frac{\beta^{1/\gamma_s}}{\beta^{1/\gamma_s} + R^{1 - \frac{1}{\gamma_s}}} \left[ \mu (1 - \alpha) - \frac{g (1 - \mu)}{\epsilon (\beta R)^{1/\gamma_s}} \right] A k^\alpha; \\
 l^D &= \frac{g}{R} (\phi \mu \alpha A k^\alpha + \phi (1 - \delta_K) k + q); \\
 l^D &= l^S; \quad q = \frac{R}{g} q + q^N;
 \end{aligned}$$

By assuming  $\bar{\omega} > 0$ , which requires  $\omega^{mf} \neq 0$  at least in one state, the economy is in a *bubbly stationary equilibrium*, i.e., a vector  $(l^D, l^S, k, R, q)$  solves (G25) under  $q^N > 0$ , where the bubble market  $q = \left(\frac{g}{g-R}\right) q^N$  poses a constraint: given  $q^N \geq 0$ , the interest rate on the credit (and the bubble) market must be small enough:  $g > R = R^B$ . This condition is necessary for the young agents to be able to buy the bubble (using their resources and the lent funds).

From the equilibrium  $l^D = l^S$  we obtain:

$$\phi (1 - \delta_K) = \left\{ \frac{\beta^{1/\gamma_s}}{\beta^{1/\gamma_s}/R + R^{-\frac{1}{\gamma_s}}} \left[ \frac{\mu (1 - \alpha)}{g} - \frac{1}{\epsilon (\beta R)^{1/\gamma_s}} \right] - \phi \mu \alpha - \frac{\bar{\omega} g}{g - R} \right\} A k^{\alpha-1} \tag{G26}$$

Furthermore, as we also assume that  $\gamma_b = 1$ , the borrowers' accumulation equation is

$$r^k = \alpha \mu (A k^{\alpha-1}) = \mu \alpha \cdot f_B(R) \tag{G27}$$

$$f_B(R) = \frac{g\left(1 + \frac{1}{\beta+\eta}\right)}{\frac{g}{R}(\phi\mu\alpha + \bar{\omega}) + \left(\frac{(1-\phi)\eta}{\eta+\beta}\right)\mu\alpha} - \frac{(1-\delta_K)\left[\left(\frac{(1-\phi)\eta}{\eta+\beta}\right) + \phi\frac{g}{R}\right]}{\frac{g}{R}(\phi\mu\alpha + \bar{\omega}) + \left(\frac{(1-\phi)\eta}{\eta+\beta}\right)\mu\alpha}$$

**H. Model solution method**

The Markov-switching OLG model is solved using the perturbation method of Foerster *et al.* (2016). They develop an iterative procedure that approximates the model's solution by guessing a set of approximations under each regime; on this basis, each regime's approximation follows standard perturbation techniques. The iterative algorithm stops when obtained approximations equal the guesses.

We stack the vector of model variables  $\Upsilon_t$  into a group of predetermined variables,  $\mathbf{x}_t \in \mathbb{R}^{n_x}$ , and a group of control variables,  $\mathbf{y}_t \in \mathbb{R}^{n_y}$ . Then, we define the vector of independent and identically distributed innovations to the exogenous predetermined variables as  $\epsilon_t \in \mathbb{R}^{n_\epsilon}$  and the vector of switching parameters as  $\theta\left(\xi_t^{mf}\right) \in \mathbb{R}^{n_\theta}$ .

The equilibrium conditions have the following general form:

$$\mathbb{E}_t \mathbf{f}\left(\mathbf{y}_{t+1}, \mathbf{y}_t, \mathbf{x}_t, \mathbf{x}_{t-1}, \epsilon_{t+1}, \epsilon_t, \theta\left(\xi_{t+1}^{mf}\right), \theta\left(\xi_t^{mf}\right)\right) = \mathbf{0}_{n_y+n_x}$$

where  $\mathbf{f}$  is a nonlinear function. Then, the algorithm works as an extension of conventional perturbation methods [Judd (1998) and Schmitt-Grohé and Uribe (2004)], where not only  $\epsilon_{t+1}$  is perturbed but also the switching parameters,  $\theta\left(\xi_{t+1}^{mf}\right), \theta\left(\xi_t^{mf}\right)$ . Since in our model, the steady state is affected by the policy regime in place, the perturbation function for  $\theta\left(\xi_t^{mf}\right)$  is  $\theta(k, \chi) = \chi\theta(k) + (1-\chi)\bar{\theta}$ , where  $\chi \in \mathbb{R}$  is the perturbation parameter,  $k$  indicates a generic regime, and  $\bar{\theta} = [\theta(1) \dots \theta(n_\xi)]\bar{p}$  is the ergodic mean of  $\theta\left(\xi_t^{mf}\right)$ .

Stacking the regime-dependent solutions for  $\mathbf{y}_t$  and  $\mathbf{x}_t$ , the algorithm assumes they are of the form:

$$\mathbf{y}_t = \mathbf{g}_{\xi_t^{mf}}(\mathbf{x}_{t-1}, \epsilon_t, \chi)$$

$$\mathbf{x}_t = \mathbf{h}_{\xi_t^{mf}}(\mathbf{x}_{t-1}, \epsilon_t, \chi)$$

for all  $\xi_t^{mf}$ , where  $\mathbf{g}_{\xi_t^{mf}} : \mathbb{R}^{n_x+n_\epsilon+1} \rightarrow \mathbb{R}^{n_y}$  and  $\mathbf{h}_{\xi_t^{mf}} : \mathbb{R}^{n_x+n_\epsilon+1} \rightarrow \mathbb{R}^{n_x}$  are continuously differentiable regime-dependent functions. Then,  $\mathbf{Y}_t = y_t \left(\mathbf{e}_{\xi_t^{mf}}^T \otimes \mathbf{I}_{n_y}\right)^{-1}$  and  $\mathbf{X}_t = x_t \left(\mathbf{e}_{\xi_t^{mf}}^T \otimes \mathbf{I}_{n_x}\right)^{-1}$ , such that approximating a solution to  $\mathbf{y}_t$  and  $\mathbf{x}_t$  is equivalent to approximating to:

$$\mathbf{Y}_t = \mathbf{G}(\mathbf{x}_{t-1}, \epsilon_t, \chi) = \begin{bmatrix} g_{\xi_t^{mf}=1}(\mathbf{x}_{t-1}, \epsilon_t, \chi) \\ \vdots \\ g_{\xi_t^{mf}=n_\xi}(\mathbf{x}_{t-1}, \epsilon_t, \chi) \end{bmatrix}$$

$$\mathbf{X}_t = \mathbf{H}(\mathbf{x}_{t-1}, \epsilon_t, \chi) = \begin{bmatrix} h_{\xi_t^{mf}=1}(\mathbf{x}_{t-1}, \epsilon_t, \chi) \\ \vdots \\ h_{\xi_t^{mf}=n_\xi}(\mathbf{x}_{t-1}, \epsilon_t, \chi) \end{bmatrix}$$



Given the vector of states  $z_t = (x_{t-1}, \epsilon_t, \xi_t^{mf})$  of dimension  $n_x + n_\epsilon + 1$ , the first-order approximation of  $G(z_t)$  and  $H(z_t)$  is:

$$\mathbf{G}(z_t) \approx Y + DG \left( \mathbf{z}_{\xi_t^{mf}} \right) \left( \mathbf{z}_t - \mathbf{z}_{\xi_t^{mf}} \right)$$

$$\mathbf{H}(z_t) \approx X + DH \left( \mathbf{z}_{\xi_t^{mf}} \right) \left( \mathbf{z}_t - \mathbf{z}_{\xi_t^{mf}} \right)$$

where  $DG \left( \mathbf{z}_{\xi_t^{mf}} \right)$  and  $DH \left( \mathbf{z}_{\xi_t^{mf}} \right)$  can be obtained by solving a system of quadratic polynomial equations and two systems of linear equations.