

UNITED STATES POSTAL SERVICE® (All Periodicals Publications Except Requester Publications)

Statement of Ownership, Management, and Circulation

1. Publication Title Powder Diffraction		2. Publication Number 0 1 0 - 0 7 1		3. Filing Date 10/1/2014	
4. Issue Frequency Quarterly March, June, Sept, December		5. Number of Issues Published Annually 4		6. Annual Subscription Price 273.00	
7. Complete Mailing Address of Known Office of Publication (Not printer) (Street, city, county, state, and ZIP+4®) Cambridge University Press 32 Ave. of the Americas, New York, NY 10013-2473				Contact Person Heidem Sunakawa Telephone (include area code) 8453484111	
8. Complete Mailing Address of Headquarters or General Business Office of Publisher (Not printer) Cambridge University Press Edinburgh Building, Cambridge CB2 2RU, England					
9. Full Names and Complete Mailing Addresses of Publisher, Editor, and Managing Editor (Do not leave blank)					
Publisher (Name and complete mailing address) Cambridge University Press 32 Ave. of the Americas, New York, NY 10013-2473					
Editor (Name and complete mailing address) Thomas Blanton, International Centre for Diffraction Data, 12 Campus Blvd., Newtown Square, PA 19073-3273 USA					
Managing Editor (Name and complete mailing address) Simon Ross, Cambridge University Press, 32 Ave. of the Americas, New York, NY 10013-2473					

10. Owner (Do not leave blank. If the publication is owned by a corporation, give the name and address of the corporation immediately followed by the names and addresses of all stockholders owning or holding 1 percent or more of the total amount of stock. If not owned by a corporation, give the names and addresses of the individual owners. If owned by a partnership or other unincorporated firm, give its name and address as well as those of each individual owner. If the publication is published by a nonprofit organization, give its name and address.)

Full Name	Complete Mailing Address
The International Centre for Diffraction Data	12 Campus Blvd. Newtown Square, PA 19073-3273 U.S.A.

11. Known Bondholders, Mortgagees, and Other Security Holders Owning or Holding 1 Percent or More of Total Amount of Bonds, Mortgages, or Other Securities. If none, check box None

Full Name	Complete Mailing Address


12. Tax Status (For completion by nonprofit organizations authorized to mail at nonprofit rates) (Check one)
 The purpose, function, and nonprofit status of this organization and the exempt status for federal income tax purposes:
 Has Not Changed During Preceding 12 Months
 Has Changed During Preceding 12 Months (Publisher must submit explanation of change with this statement)

PS Form 3526, August 2012 (Page 1 of 3 (Instructions Page 3)) PSN: 7530-01-000-9931 PRIVACY NOTICE: See our privacy policy on www.usps.com.

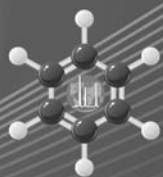
13. Publication Title Powder Diffraction		14. Issue Date for Circulation Data Below 06/14	
15. Extent and Nature of Circulation		Average No. Copies Each Issue During Preceding 12 Months	No. Copies of Single Issue Published Nearest to Filing Date
a. Total Number of Copies (Net press run)		260	277
b. Paid Circulation (By Mail and Outside the Mail)	(1) Mailed Outside-County Paid Subscriptions Stated on PS Form 3541 (include paid distribution above nominal rate, advertiser's proof copies, and exchange copies)	38	39
	(2) Mailed In-County Paid Subscriptions Stated on PS Form 3541 (include paid distribution above nominal rate, advertiser's proof copies, and exchange copies)	0	0
	(3) Paid Distribution Outside the Mails Including Sales Through Dealers and Carriers, Street Vendors, Counter Sales, and Other Paid Distribution Outside USPS®	80	83
	(4) Paid Distribution by Other Classes of Mail Through the USPS (e.g., First-Class Mail®)	0	0
c. Total Paid Distribution (Sum of 15b (1), (2), (3), and (4))		118	122
d. Free or Nominal Rate Distribution (By Mail and Outside the Mail)	(1) Free or Nominal Rate Outside-County Copies Included on PS Form 3541	3	4
	(2) Free or Nominal Rate In-County Copies Included on PS Form 3541	0	0
	(3) Free or Nominal Rate Copies Mailed at Other Classes Through the USPS (e.g., First-Class Mail)	0	0
	(4) Free or Nominal Rate Distribution Outside the Mail (Carriers or other means)	12	14
e. Total Free or Nominal Rate Distribution (Sum of 15d (1), (2), (3) and (4))		15	18
f. Total Distribution (Sum of 15c and 15e)		133	140
g. Copies not Distributed (See Instructions to Publishers #4 (page #3))		127	137
h. Total (Sum of 15f and g)		260	277
i. Percent Paid (15c divided by 15f times 100)		89%	87%

16. Total circulation includes electronic copies. Report circulation on PS Form 3526-X worksheet.

17. Publication of Statement of Ownership
 If the publication is a general publication, publication of this statement is required. Will be printed in the _____ issue of this publication.
 Publication not required.

18. Signature and Title of Editor, Publisher, Business Manager, or Owner

 Date: 10/1/2014

I certify that all information furnished on this form is true and complete. I understand that anyone who furnishes false or misleading information on this form or who omits material or information requested on the form may be subject to criminal sanctions (including fines and imprisonment) and/or civil sanctions (including civil penalties).



PDF-4/Organics 2015

Solve Difficult Problems, Get Better Results

*Comprehensive materials database featuring
494,000+ organic and organometallic compounds*

Features the largest collection of pharmaceuticals, excipients and polymers

Highly targeted collection, with special focus on materials used in commercial and regulatory fields

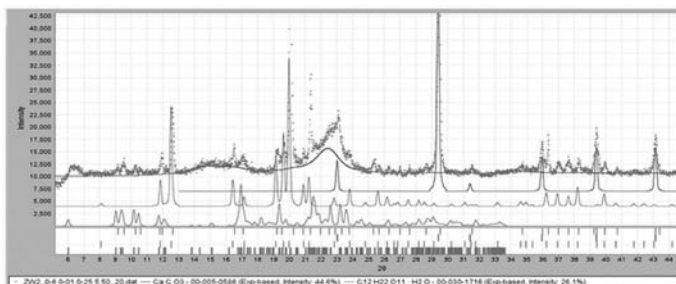
Enhanced identification for crystalline, nano and amorphous materials

Trade names for over 9,000 bioactive/ pharmaceutical entries

Integrated data mining software

Sleve+ Search-indexing Software (included as an added-value)

Combines powder diffraction and crystal structure reference data



The four phase identification of the formulation of Lipitor uses references from a single crystal determination, an experimental powder pattern of cellulose β , a calculated powder pattern and pattern extracted from the patent literature. The identification required an inorganic excipient, polymer excipient and two organic compounds. A variety of reference materials and sources enabled the identification.

COMPREHENSIVE ❖ STANDARDIZED ❖ QUALITY REVIEWED



www.icdd.com | marketing@icdd.com

ICDD, the ICDD logo and PDF are registered in the U.S. Patent and Trademark Office. Powder Diffraction File is a trademark of JCPDS—International Centre for Diffraction Data. ©2014 JCPDS—International Centre for Diffraction Data.



GRANT-IN-AID Program

JOIN ICDD'S ELITE GROUP OF SCIENTISTS



who contribute experimental powder diffraction patterns to the Powder Diffraction File

AS A MEMBER OF THIS ELITE GROUP, YOU WILL RECEIVE THE FOLLOWING BENEFITS:

- Financial support to aid current research
- Publication of pattern(s), if accepted by the Editorial Department, in the Powder Diffraction File
- Receive calibration standards
- Purchase certain products at reduced prices
- Web-based access to the list of compounds in the ICDD master database—includes published patterns, as well as patterns still in the editorial process
- First-time grantees receive a complimentary one-year subscription to *Powder Diffraction*

DISTINGUISHED GRANTEES



2013: (L)
Professor Xinkan Yao

2010: (R)
Dr. Tom Blanton
presenting to
Professor Bogdan Lazoryak



2007: (L)
Dr. Miguel Delgado
presenting to
Dr. Sergei Kirik

2004: (R)
Dr. Tom Blanton
presenting to
Professor Shao-Fan Lin



2001: (L)
Dr. Tom Blanton
presenting to
Professor Evgeny Antipov

1998: (R)
Dr. Ekkehart Tillmanns



For over 50 years, ICDD has supported a well-developed program of grants to researchers around the world.

One of our main objectives is to expand the range of reference materials by producing and cataloging high-quality X-ray diffraction patterns in our internationally renowned database, the Powder Diffraction File. Thanks to the longevity of this program, these contributions account for approximately a quarter of the current experimental file. ICDD awards financial support to qualified investigators in the form of grants-in-aid on a competitive proposal basis. The duration of a grant is 12 months with two cycles per year. Cycle I begins 1 April and Cycle II begins 1 October.

Geographic Locations of Grants for the Past 15 Years:

Argentina	Malaysia
Austria	Netherlands
Canada	P.R. of China
Chile	Poland
Columbia	Portugal
Czech Republic	Russia
Estonia	Spain
Finland	Switzerland
France	Taiwan
Germany	Tunisia
India	Ukraine
Israel	United Kingdom
Italy	United States
Japan	Uruguay

Total Proposals Funded for the Past 15 Years: **720**

Could you be the next Distinguished Grantee?
www.icdd.com/grants

For more information on ICDD's Grant-in-Aid, visit www.icdd.com/grants



- S** Standardized data
- M** More Coverage
- A** All data sets are evaluated for quality
- R** Reviewed, edited and corrected prior to publication
- T** Targeted for material identification and characterization

Make the SMART move

ICDD databases are the only crystallographic databases in the world with quality marks and quality review processes that are ISO certified.

The Powder Diffraction File (PDF)

PDF-2 Release 2014	274,443 material entries
PDF-4+ 2014	354,264 material entries
WebPDF-4+ 2014	354,264 material entries
PDF-4/Minerals 2014	41,423 material entries
PDF-4/Organics 2015	494,966 material entries



www.icdd.com | marketing@icdd.com

ICDD, the ICDD logo and PDF are registered in the U.S. Patent and Trademark Office. Powder Diffraction File is a trademark of JCPDS—International Centre for Diffraction Data. ©2014 JCPDS—International Centre for Diffraction Data.

EQUINOX, real time XRD instruments

inel 

Everyone to the XRD system !

Choose from our comprehensive range of real time XRD instruments!

EQUINOX 100	Stand alone benchtop XRD
EQUINOX 1000	Benchtop XRD
EQUINOX 2000	Routine XRD
EQUINOX 3000	Powder high resolution XRD
EQUINOX 4000	Microdiffraction/mapping XRD
EQUINOX 5000	High resolution XRD
EQUINOX 6000	4 circle texture/stress XRD
SWAXS	SAXS WAXS instrumentation
PRECIX	XRD residual stress Robot
Xsolo	Portable Stress System

Questions on which instrument is best suited for your application? Don't hesitate to contact us, our technical sales team will help configure a system for you.



Our technology to serve all your applications.

- PSD type detector for real time detection up to $120^\circ/2\theta$
- Very high resolution, up to $0.05^\circ/2\theta$ FWHM
- Monochromatic optics
- Several sample holders including variable temperature chambers
- User-friendly and powerful software

Would you like to learn more about our systems?

Contact us now at info@inel.us (USA & Canada)

You are located outside North America contact us at info@inel.fr !

ICDD X-RAY CLINICS & WORKSHOPS



PRACTICAL XRF & XRD TRAINING BY THE INDUSTRY'S LEADING EXPERTS!

Sponsored by the

International Centre for Diffraction Data

• LIVE INSTRUMENTATION • HANDS-ON TRAINING • THEORETICAL LECTURES

Practical X-ray Fluorescence:

27 April–1 May 2015

Fundamentals of X-ray Powder Diffraction:

1–5 June 2015

*Advanced Methods in X-ray Powder Diffraction:

8–12 June 2015

*Rietveld Refinement & Indexing Workshops:

Basic: 28–30 September 2015

Advanced: 1–2 October 2015



Register Today at WWW.ICDD.COM/EDUCATION

* See the ICDD web site for prerequisites for advanced courses.

FOR MORE INFORMATION CONTACT

Eileen Jennings, Education Coordinator

Email: clinics@icdd.com

Tel: 610.325.9814

Toll-free: 866.378.9331 (US & Canada)



©2014 JCPDS—International Centre for Diffraction Data

MYTHEN2 R



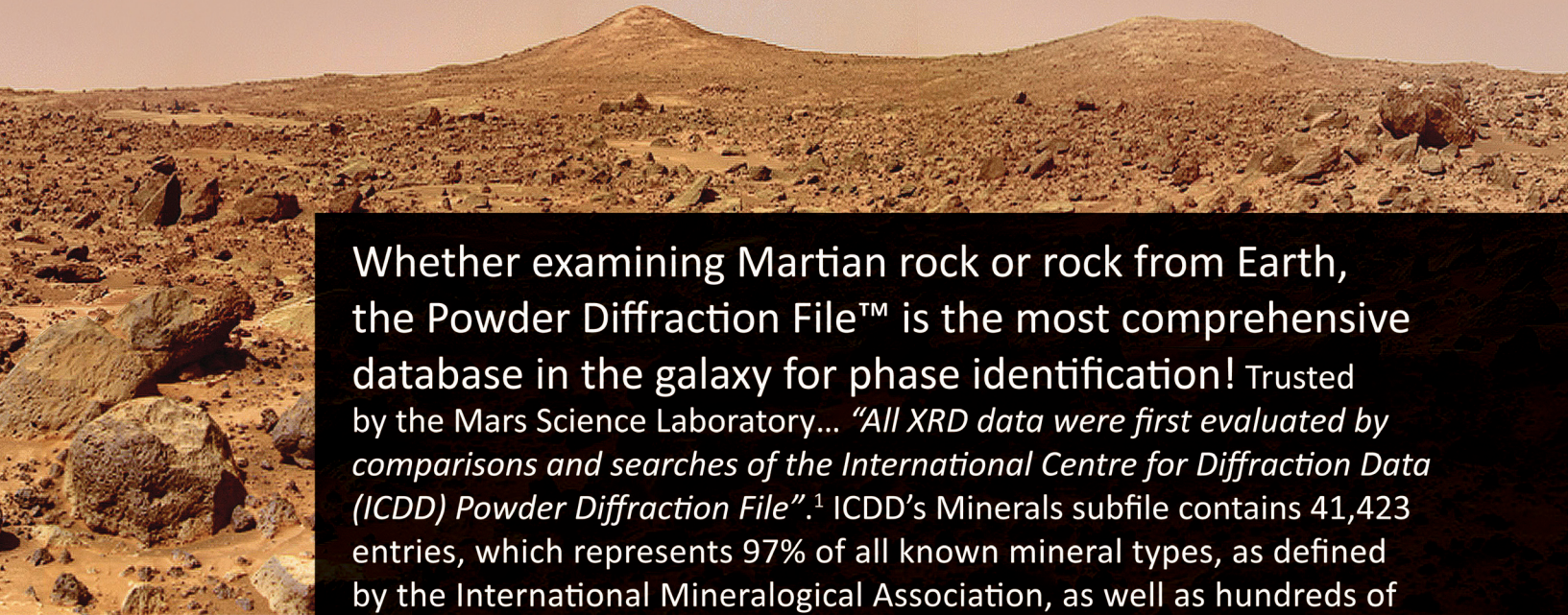
Microstrip Hybrid Photon Counting X-ray Detector Series

Top performance in all high-throughput applications

- Noise-free single-photon counting from Ti to Ag radiation
- Compact design fits in any diffractometer
- Multi-modular systems for laboratory
- Available with 640- and 1280-strip modules

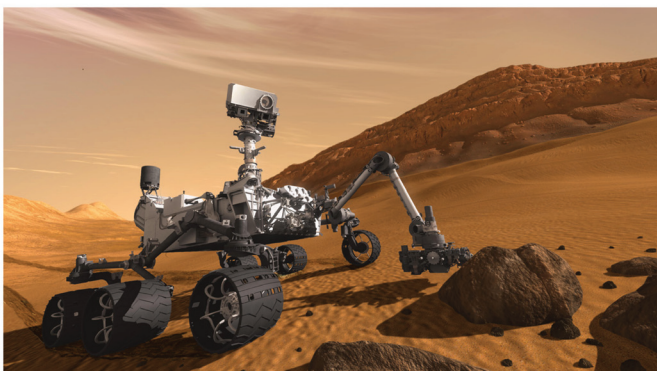
laboratory and industry

ANALYZE DIFFRACTION DATA COLLECTED FROM ANYWHERE, *EVEN MARS*

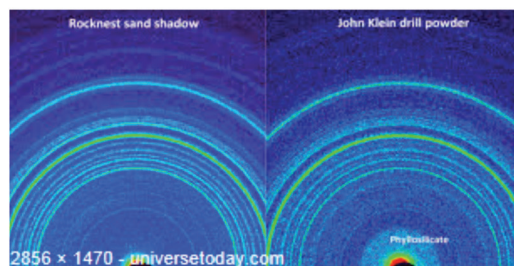


Whether examining Martian rock or rock from Earth, the Powder Diffraction File™ is the most comprehensive database in the galaxy for phase identification! Trusted by the Mars Science Laboratory... *“All XRD data were first evaluated by comparisons and searches of the International Centre for Diffraction Data (ICDD) Powder Diffraction File”*.¹ ICDD’s Minerals subfile contains 41,423 entries, which represents 97% of all known mineral types, as defined by the International Mineralogical Association, as well as hundreds of unnamed minerals and thousands of mineral polytypes.

You can trust your analyses with the only crystallographic databases with quality marks and quality review processes that are ISO certified.



¹D. L. Bish, D. F. Blake, D. T. Vaniman, S. J. Chipera, R. V. Morris, D. W. Ming, A. H. Treiman, P. Sarrazin, S. M. Morrison, R. T. Downs, C. N. Achilles, A. S. Yen, T. F. Bristow, J. A. Crisp, J. M. Morookian, J. D. Farmer, E. B. Rampe, E. M. Stolper, N. Spanovich, MSL Science Team (2013). “X-ray Diffraction Results from Mars Science Laboratory: Mineralogy of Rocknest at Gale Crater,” *Science* 341, 27 September 2013, 1238932-1 —1238932-5.



COMPREHENSIVE • STANDARDIZED • QUALITY REVIEWED



www.icdd.com | marketing@icdd.com
ICDD, the ICDD logo and PDF are registered in the U.S. Patent and Trademark Office. Powder Diffraction File is a trademark of JCPDS—International Centre for Diffraction Data. ©2015 JCPDS—International Centre for Diffraction Data