

of them, also suggests caution in drawing inferences. In some places they are found in the typical boulder-clay of the district.

I have since had the pleasure of seeing some of the sections in Mr. Smith's company. All I say is, there are abundant materials for investigation, and it will be well not hastily to leap to conclusions. *Festina lentè* is a good motto—especially as regards shell-beds.

GLASGOW, 11th June, 1896.

DUGALD BELL.

P.S.—By the way, the term "shell-bed" is apt to be misleading. It may suggest a well-defined layer or band of shells, fairly well preserved; but the actual "find" is often only some fragments scattered here and there throughout the clayey or sandy deposit, as the case may be.

---



---

### OBITUARY.

---

#### THOMAS BEESLEY, J.P., F.C.S.

BORN MARCH 28TH, 1818.

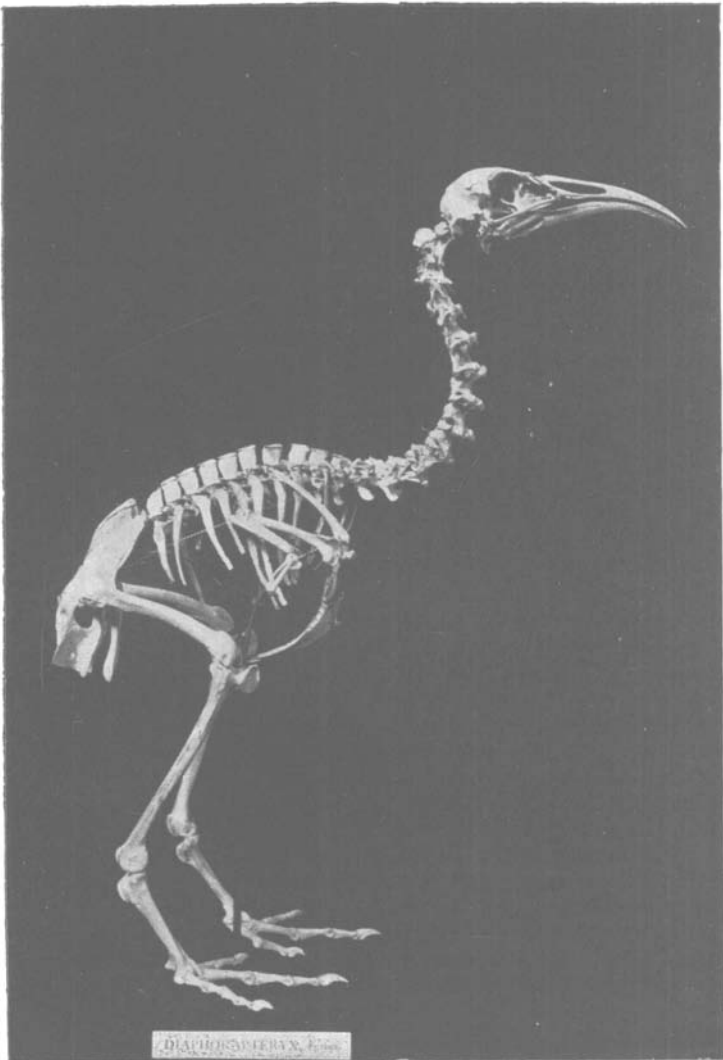
DIED MAY 15TH, 1896.

THOMAS BEESLEY, who was born at Banbury, commenced business as a chemist and druggist in 1844 at Chipping Norton; two years later he succeeded to a similar business in his native town, and from this he retired in 1887. He was a man of great literary and scientific culture, expert as an analyst, and one who had a wide acquaintance with botany, archæology, and geology. During the past thirty years he gave especial attention to geology, and in 1872 communicated a valuable paper on the geology of the neighbourhood of Banbury to the Warwickshire Naturalists' Field Club (see *GEOL. MAG.*, vol. ix, p. 279). In the following year he acted with Prof. Morris in directing an excursion of the Geologists' Association to Banbury (*Proc. Geol. Assoc.*, vol. iii, p. 197). The Lower Lias of Fenny Compton engaged much of his attention, and he made a fine collection of fossils, especially of Belemnites, from the zones of *Ammonites Jamesoni*, *A. armatus*, etc. (*Proc. Warwick Nat. Club*, 1877). Later on he gave an account of the sections exposed on the railway between Banbury and Chipping Norton; and at Easter, 1878, he acted in conjunction with Mr. Huddlestone in directing an excursion of the Geologists' Association to Chipping Norton (*Proc. Geol. Assoc.*, vol. v, pp. 165, 378). In 1883 he announced the discovery of a new local fossil, which he named *Discina Gunnii*; but as the fact was published in the *Banbury Guardian* of August 9th it can hardly be considered as a proper palæontological record. Kind-hearted and genial by nature, Mr. Beesley was ever ready to give help and information to those who sought it, and his memory will be cherished by all who had the happiness to know him.

H. B. W.

---

It is with deep regret that we have to record the death of SIR JOSEPH PRESTWICH, D.C.L., F.R.S., F.G.S., F.C.S., which took place early on the morning of the 23rd June, 1896, at his country house, Darent Hulme, Shoreham, by Sevenoaks, Kent, in his 84th year. For an account of his life and works, with an excellent portrait, see the *GEOLOGICAL MAGAZINE*, Dec. III, Vol. X, June 1898, pp. 241-6.



Skeleton of a large extinct Rail,  
*Diaphorapteryx Hawkinsi*, Forbes.

FROM THE CHATHAM ISLANDS.

About one-fourth natural size. From a photograph by A. GEPP, Esq.