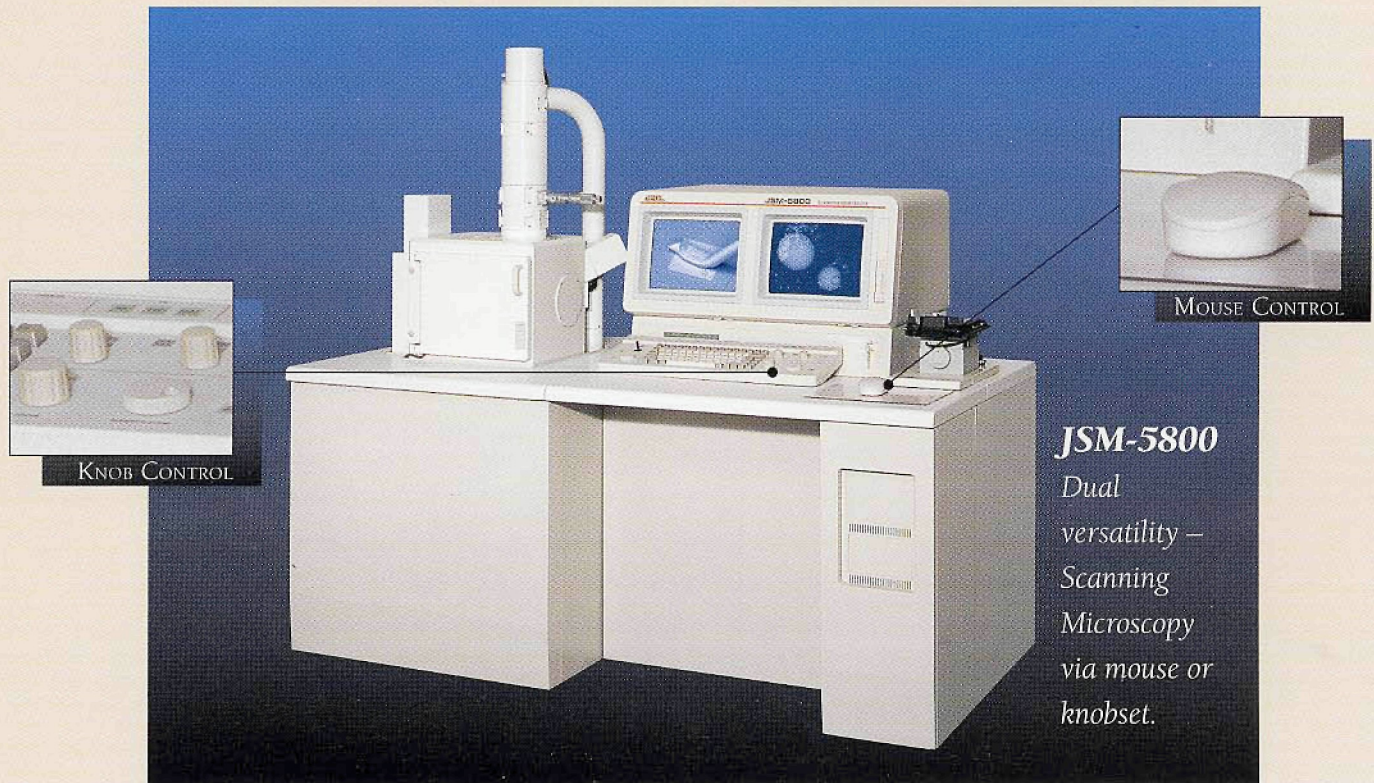


Twice As Precise

JSM-5800 Scanning Microscope Features
Two Options for Optimum Control.



- Large Specimen Stage
- High/low vacuum capability
- Super Conical Objective Lens for high resolution

Suitable for a wide range of applications, the JSM-5800 from JEOL represents a new era in scanning microscopy. Now you have the option to choose either mouse or knobset control, while taking advantage of the super conical objective lens designed for the highest resolution (3.5nm) and large sample tilting.

- ▶ Easy-to-use unit has a wide range of built-in automatic functions.
- ▶ Large specimen stage allows room for up to an 8-inch sample.
- ▶ Archiving enables temporary or permanent storage and retrieval in standard TIF format.
- ▶ Five axis stage automation makes the JSM-5800 fast and easy-to-use.

Discover the twice as precise alternative that is as unique as your work itself.

To arrange for a demonstration of the innovative JSM-5800 call JEOL today.



JEOL USA, Inc., 11 Dearborn Road, Peabody, MA 01960 Tel: 508-535-5900 Fax: 508-536-2205 e-mail: eod@jeol.com

Circle Reader Inquiry #4



UNEQUALED VERSATILITY

Topcon Scanning Electron Microscopes in a Unique Class

You value the versatility of a Swiss Army Knife. Now, you can have that same kind of versatility with Topcon's 500 Series SEMs for your scanning electron microscopy tasks. The versatility to meet your needs today and tomorrow.

Ultimate SEM Capabilities

Choose from a complete family of SEMs – Tungsten (W), LaB₆, and Field Emission.



All have windows mouse-based computer controls or traditional automated controls, or both, to provide access to all SEM func-

tions. Comprehensive digital imaging and archiving provide full image manipulation. Unique WET-SEM capability gives you the real image quickly and easily.

Compare and you'll agree that no other SEM comes close in versatility, ease of use, reliability and value. It's unequalled. But see for yourself. Call us at 1-800-538-6850 or write to TOPCON, 37 West Century Road, Paramus, New Jersey 07652.

