

Journey into the deep.



Specimen: Humpback Whale (Genus: Megaptera)
Instrument: The Naked Eye

Journey into the deeper.



Specimen: Leaf of Arabidopsis Thaliana
Instrument: Hitachi S-3500N SEM

The journey to discover and understand that which cannot be readily seen has often inspired bold exploration.

Hitachi seeks to further that journey by manufacturing leading instrumentation built on a solid foundation of reliability, technology, and technical acumen. Hitachi's nanotechnology tools — a wide variety of ELECTRON MICROSCOPES — will empower countless applications to produce stronger, faster, smarter materials that promise to enhance our lives for the better.

Hitachi High Technologies America, Inc.

Electron Microscope Division Headquarters
5100 Franklin Drive
Pleasanton, CA 94588
Sales Phone: (800) 227-8877
Service Phone: (800) 253-3053
www.hitachi-hta.com

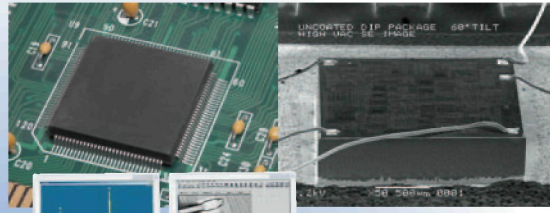
HITACHI
Inspire the Next

\$2000
Special Limited
Time Offer!
SEM & EDS
Details Below

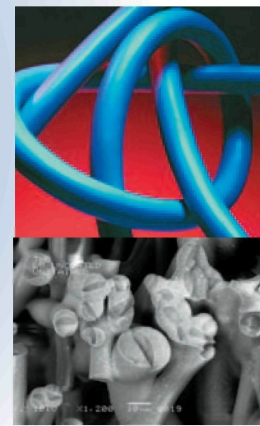
This SEM's for you.

Unlimited imaging at an unbeatable price!

*failure analysis
brittle fracture in steel*

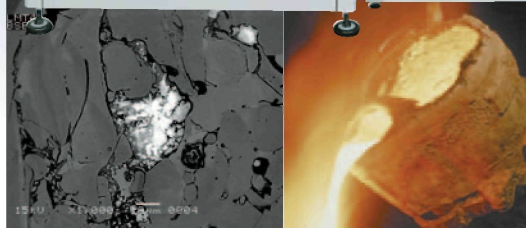


*electronics
dip circuit*



*polymers
fiber cross-section*

*metallurgy
inclusion in a
weld x-section*



Take advantage of a special opportunity to own a new, affordable, easy-to-use SEM from JEOL, the imaging leader. For a limited time we're offering the JSM-6060 scanning electron microscope at an extremely special price.* Now is your chance to employ the latest in SEM technology when and where you need it - for routine inspection, forensics, contamination and failure analysis, quality control, reverse engineering, and new product development.

Own the performance SEM you've been waiting for and enjoy the support of the imaging experts at JEOL - complete with training and warranty. Join the JEOL family and expand your imaging horizons. Call Janice at 978-536-2267, or visit www.jeol.com/jsm6060.

- **3.5 nm resolution**
- **PC control**
- **Full range of automatic functions**
- **Includes features of higher-priced SEMs**
- **Small footprint – compact new look**

Another **Extreme Imaging**

Solution from

JEOL

jsm6060@jeol.com

*** Monthly lease payment of \$2000. Lease term of 5 years; \$1 buy-out at end of term. Monthly payment does not include tax and may not be available in all states. Delivery in USA only. Lease available through Thermo Financial and is subject to credit approval.**