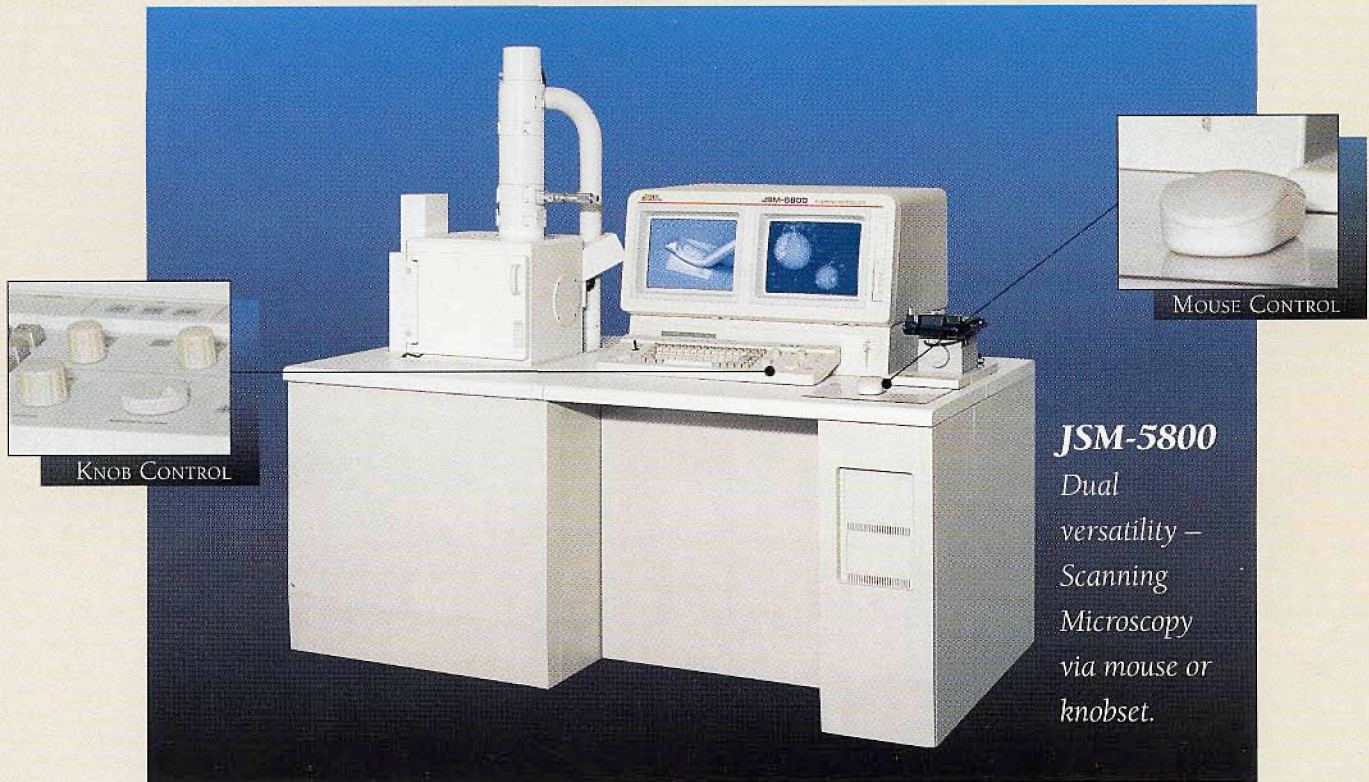


Twice As Precise

JSM-5800 Scanning Microscope Features Two Options for Optimum Control.



JSM-5800
Dual
versatility –
Scanning
Microscopy
via mouse or
knobset.

- Large Specimen Stage
- High/low vacuum capability
- Super Conical Objective Lens for high resolution

Suitable for a wide range of applications, the JSM-5800 from JEOL represents a new era in scanning microscopy. Now you have the option to choose either mouse or knobset control, while taking advantage of the super conical objective lens designed for the highest resolution (3.5nm) and large sample tilting.

- ▶ Easy-to-use unit has a wide range of built-in automatic functions.
- ▶ Large specimen stage allows room for up to an 8-inch sample.
- ▶ Archiving enables temporary or permanent storage and retrieval in standard TIF format.
- ▶ Five axis stage automation makes the JSM-5800 fast and easy-to-use.

Discover the twice as precise alternative that is as unique as your work itself.

To arrange for a demonstration of the innovative JSM-5800 call JEOL today.



JEOL USA, Inc., 11 Dearborn Road, Peabody, MA 01960 Tel: 508-535-5900 Fax: 508-536-2205 e-mail: eod@jeol.com

Circle Reader Inquiry #4



It's Every Bit True Field Emission... Except The Cost.

Introducing Topcon SM-520 Field Emission Scanning Electron Microscope

At last, you can enjoy the benefits of Field Emission performance on a limited budget. With the SM-520, you get the high resolution, reliability, versatility, and low kV performance you want. Plus Topcon's unique Dual Control system

that's easy to use and adapts to your personal operating style.



Field Emission Performance at LaB₆ Prices

The best part is, it all comes at LaB₆ prices. Take a closer look and you'll see that the SM-520 is within your reach. Call us today at 1-800-538-6850 or write to Topcon Technologies, Inc., 37 West Century Road, Paramus, New Jersey 07652.

