



Original Article

Canadian Practice and Recommendations on Functional MRI to Lateralize Language in Epilepsy

Madeleine R. Falby¹ , Donald C. Brien¹, Lysa Boissé Lomax^{1,2,3}, Garima Shukla^{1,2}  and Gavin P. Winston^{1,2} 

¹Centre for Neuroscience Studies, Queen's University, Kingston, ON, Canada, ²Department of Medicine, Division of Neurology, Queen's University, Kingston, ON, Canada and ³Department of Medicine, Division of Respiriology, Queen's University, Kingston, ON, Canada

ABSTRACT: Background/Objective: Identifying a patient's dominant language hemisphere is an important evaluation performed prior to epilepsy surgery and is commonly assessed using functional magnetic resonance imaging (fMRI). However, the lack of standardization and resultant heterogeneity of fMRI paradigms used in clinical practice limits the ability of cross-center comparisons to be made regarding language laterality results. **Methods:** Through surveying Canadian Epilepsy Centres in combination with reviewing supporting literature, current fMRI language lateralization practices for the clinical evaluation of patients with epilepsy were assessed. To encourage standardization of this practice, we outlined a two-part paradigm series that demonstrates widespread acceptance, reliability and accessibility in lateralizing various aspects of language functioning in individuals with average or near-average IQ and normal literacy skills. **Results:** The collected data confirm a lack of standardization in fMRI laterality assessments leading to clinical heterogeneity in stimulation and control tasks, paradigm design and timing, laterality index calculations, thresholding values and analysis software and technique. We suggest a Sentence Completion (SC) and Word Generation (WG) paradigm series as it was most commonly employed across Canada, demonstrated reliability in lateralizing both receptive and expressive language areas in supporting literature, and could be readily intelligible to an inclusive population. **Conclusion:** Through providing recommendations for a two-part paradigm series, we hope to contribute to the standardization of this practice across Canada to reduce clinical heterogeneity, encourage communicability between institutions, and enhance methodologies for the surgical treatment of epilepsy for the benefit of all individuals living with epilepsy in Canada.

RÉSUMÉ : Pratiques et recommandations canadiennes en matière d'IRM fonctionnelle pour la latéralisation du langage dans le cas de l'épilepsie. Contexte et objectif: L'identification de l'hémisphère linguistique dominant d'un patient est une évaluation importante effectuée avant la chirurgie de l'épilepsie. Elle est couramment évaluée au moyen d'un examen d'imagerie par résonance magnétique fonctionnelle (IRMf). Cependant, le manque de standardisation et l'hétérogénéité des paradigmes d'IRMf utilisés dans la pratique clinique limitent la possibilité de faire des comparaisons entre les établissements de santé en ce qui concerne les résultats de latéralisation du langage. **Méthodes:** En interrogeant les centres canadiens d'épilepsie et en examinant la documentation existante, on a ainsi cherché à évaluer les pratiques actuelles de latéralisation du langage par IRMf en vue d'une évaluation clinique des patients atteints d'épilepsie. Pour encourager la normalisation de cette pratique, nous avons décrit une série de paradigmes en deux parties qui démontrent une acceptation, une fiabilité et une accessibilité généralisées dans la latéralisation de divers aspects du fonctionnement du langage chez des individus ayant un QI moyen ou proche de la moyenne et donnant à voir des capacités normales de lecture et d'écriture. **Résultats:** Les données recueillies confirment en effet un manque de normalisation dans les évaluations de latéralisation par IRMf, ce qui entraîne une hétérogénéité clinique dans les tâches de stimulation et de contrôle, dans la conception et la synchronisation des paradigmes, dans les calculs de l'indice de latéralisation, dans les valeurs seuils, ainsi que dans les logiciels et les techniques d'analyse. À cet égard, nous suggérons une série de paradigmes de complétion de phrases (CP) et de génération de mots (GM) dans la mesure où ils sont les plus couramment utilisés au Canada mais aussi parce qu'ils ont démontré dans la littérature leur fiabilité en matière de latéralisation des zones du langage réceptif et expressif et pourraient, d'un point de vue inclusif, être facilement compréhensibles. **Conclusion:** En fournissant des recommandations pour une série de paradigmes en deux parties, nous espérons contribuer à la standardisation de cette pratique à travers le Canada afin de réduire l'hétérogénéité clinique, d'encourager la communication entre les établissements et d'améliorer les méthodologies pour le traitement chirurgical de l'épilepsie, et ce, pour le bénéfice de tous les individus vivant avec cette maladie au Canada.

Keywords: epilepsy; functional MRI; language; lateralization

(Received 9 May 2023; final revisions submitted 28 March 2024; date of acceptance 28 March 2024)

Corresponding author: Gavin Paul Winston; Email: gavin.winston@queensu.ca

Cite this article: Falby MR, Brien DC, Boissé Lomax L, Shukla G, and Winston GP. Canadian Practice and Recommendations on Functional MRI to Lateralize Language in Epilepsy. *The Canadian Journal of Neurological Sciences*, <https://doi.org/10.1017/cjn.2024.56>

© The Author(s), 2024. Published by Cambridge University Press on behalf of Canadian Neurological Sciences Federation. This is an Open Access article, distributed under the terms of the Creative Commons Attribution-NonCommercial licence (<http://creativecommons.org/licenses/by-nc/4.0/>), which permits non-commercial re-use, distribution, and reproduction in any medium, provided the original article is properly cited. The written permission of Cambridge University Press must be obtained prior to any commercial use.

Introduction

Epilepsy is a chronic neurologic disorder that affects over 50 million people worldwide, independent of an individual's age, race, or socioeconomic background.¹⁻⁴ The principal manifestation is a spontaneous recurrence of unprovoked seizures, which can be classified as generalized or focal onset.⁵

The treatment of patients with epilepsy most commonly involves anti-seizure medications. While these are the first line therapeutic intervention, they are only effective in preventing seizures in around 70% of individuals. In people with focal epilepsy where medication cannot provide seizure freedom, epilepsy surgery provides a greater likelihood of seizure remission than ongoing medical treatment.^{1,6} Epilepsy surgery should be offered to individuals where the long-term consequences of seizures overshadow the immediate risks of an invasive operation.^{1,7}

Presurgical evaluation, such as identifying a patient's language lateralization, is essential in determining surgical candidacy. Language lateralization is the extent to which an individual's language functioning demonstrates a hemispheric specialization within the brain.⁸ Identifying a patient's dominant language hemisphere allows clinicians to infer the side of seizure onset, for instance if the semiology of focal seizures involves prominent language impairment, seizure onset is likely within the language dominant hemisphere.⁹ Clinicians can also use this information to predict the potential postsurgical language deficits that may occur as a result of the resection of epileptogenic areas, communicate these surgical complications to the patient, and obtain patient consent that is fully informed.^{10,11}

Past techniques to lateralize language include the dichotic listening test and the intracarotid amobarbital (Wada) test. The Wada test was the previous gold standard for the preoperative assessment of language laterality in patients undergoing epilepsy surgery. However, it has been gradually phased out of preoperative evaluations and replaced by functional magnetic resonance imaging (fMRI) which is a more cost-efficient, noninvasive and safer alternative.¹² Several studies have shown a significant concordance between the two techniques, with one study reporting a 90% agreement for the calculation of language laterality indices.¹²⁻¹⁵ The use of fMRI for language lateralization as a presurgical tool has many benefits in its ability to predict postoperative deficits. Studies have demonstrated that patients with epilepsy who have a greater left lateralization of language functioning, evaluated by fMRI, show poorer naming performance one year following left temporal surgery.¹⁶⁻¹⁸

Language lateralization using fMRI can be assessed by many paradigms that are not equivalent and may produce different patterns of fMRI activation which will directly impact a patient's lateralization results. Despite the clinical relevance and growing acceptance of fMRI for language lateralization, this technique is not standardized as the design of paradigm sequences varies significantly worldwide.¹⁴ While the heterogeneity of fMRI paradigms used in clinical practice can provide effective laterality assessments for patients within an epilepsy surgery center, challenges arise when making quantitative comparisons between centers. While each epilepsy surgery center may have a completely effective paradigm series for the presurgical assessment of language laterality, attempts at standardization would increase the communicability, reproducibility and interpretability of laterality results between centers which in turn may reveal current disparities and opportunities for improvement. The extent of variation around the world, particularly in Canada, likely stems from competing scientific approaches that may evaluate certain paradigms more useful than others. Some organizations, such as the American Society of Functional Neuroradiology (ASFNR), have taken great strides to provide well-informed and reliable recommendations for fMRI paradigms to efficiently lateralize language abilities in patients with various neurological disorders.¹⁹ Through institutional polling, broad literature reviews and expert opinion, the ASFNR designed a three-tier fMRI sequence of the most commonly employed language paradigms (Figure 1). However, to increase the willingness of institutions to adopt standardized fMRI language lateralization practices, additional scientific and clinical evidence regarding the efficiency of language paradigms must be acquired and shared across communities.

To ensure the appropriate acquisition of language lateralization results, language paradigms must fulfill certain criteria. Since language functioning is composed of many types of skills including pragmatics, semantics and syntax, there is general agreement that at least two paradigms should be employed to sufficiently assess language lateralization.¹⁹ Furthermore, the paradigms should be designed such that they are able to effectively determine the interhemispheric lateralization of both receptive and expressive language ability. Therefore, to be successful as a preoperative technique, fMRI for language lateralization must involve standardized paradigms that are reproducible and efficient.

In this study, we survey epilepsy surgery programs across Canada and collect information on their current fMRI paradigms, discuss the limitations of heterogeneity in language lateralization fMRI

American Society of Functional Neuroradiology (ASFNR) Guidelines

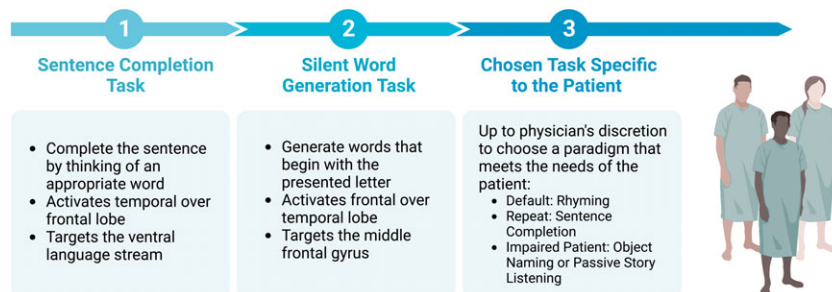


Figure 1. American Society of Functional Neuroradiology (ASFNR) three-tier functional magnetic resonance imaging (fMRI) language lateralization guidelines. According to the ASFNR, language laterality assessments using fMRI should follow a default algorithm consisting of a sentence completion task, a silent word generation task and a third task chosen by physicians to best meet the specific needs of their patients. Created with BioRender.com.

paradigms, and set forth two adoptable paradigms for language lateralization with the goal of solidifying a best-validated approach.

Methods

Review of existing literature

To understand the various perspectives and approaches to lateralizing language using fMRI, a review of the existing literature was performed using PubMed. Search terms included the following: functional magnetic resonance imaging (fMRI), language lateralization, epilepsy, language paradigms, presurgical language fMRI, laterality indices and clinical language fMRI protocols. The selection criteria for publications included controlled clinical trials as well as systematic reviews with no limitations placed on the publication's country or date. Additional articles of relevance were identified through backward reference searching and forward reference searching. Information was extracted on the cognitive design and efficacy of fMRI language paradigms, software for the analysis of fMRI results, the use of programming tools for the calculation of laterality indices, as well as established consensus statements.

Survey of canadian epilepsy centers

Canadian centers with epilepsy surgery programs that may utilize fMRI for language lateralization were contacted to participate in an interview regarding their practices. Through video conferencing, data were collected from six epilepsy surgery programs in Nova Scotia, Quebec, Ontario and Alberta. Two additional centers in British Columbia and Alberta were approached for participation but did not respond.

Using a survey, professionals speaking on behalf of their institution's practices answered questions regarding the cognitive design of fMRI language paradigms, protocol structure, image acquisition, data analysis, the use of software and/or programming tools, interpretation of the results, the use of alternative methods for assessing language laterality and the clinical application of the lateralization results. The questions were designed to be comprehensive and flexible to allow respondents to elaborate on their answers (Supplementary Table 1).

Optimal language paradigms and protocols

To establish optimal fMRI paradigms for the purpose of lateralizing language, information acquired through the literature review and surveying of Canadian epilepsy surgery programs was considered. To develop the most pragmatic approach, language tasks have to fulfill specific criteria: (1) the paradigm must be validated by various epilepsy surgery centers, (2) the paradigm should demonstrate a high degree of reliability and efficacy in lateralizing language functioning for both patients with epilepsy and healthy volunteers, (3) the paradigm must be appropriately challenging for individuals with average or near-average IQ and normal literacy skills, and (4) the use and implementation of the paradigm should be time and cost-efficient. The development of protocol for fMRI language lateralization was also guided by existing literature and information from Canadian epilepsy surgery programs. This included the specifics of each paradigm's block design and sequence, the time allotted to each paradigm, the presentation of stimuli along with the corresponding software, methods to ensure compliance and the use of control tasks that effectively differentiated language functioning from unrelated brain activity.

Results

Canadian Epilepsy Centre survey

Among the six Canadian Epilepsy Centres that were surveyed, there was variation observed between each institution's respective 'standard' fMRI language practices (Table 1 and Table 2). The fMRI language lateralization assessments across all respondents consisted of three different paradigms.

The collected data demonstrated that the Sentence Completion Paradigm was the most frequently employed language task among respondents (5/6) while the Word Generation and Verb Generation Paradigms were equivalently used among half the respondents (3/6) (Figure 2). While similar forms of the Sentence Completion, Word Generation and Verb Generation paradigms were used by the majority of Canadian Epilepsy Surgery Centres, these paradigms showed heterogeneity in their structure, timing and choice of stimuli content between centers (See Discussion Section B. Potential Pitfalls of Stimuli Variation). Alternative tasks that did not demonstrate widespread utility included the Naming to Description, Rhyming, Synonym Generation, Passive Listening and Syntax Choice Paradigms. To compensate for individuals who may have intellectual deficits or below average literacy skills, respondents reported slowing down the language paradigms or replacing challenging stimulation tasks for more manageable alternatives.

The choice of control tasks, which were used to provide contrast for the fMRI analysis, also demonstrated variation among the Canadian Epilepsy Centres. All respondents acknowledged that their control tasks were designed to eliminate visual sensory processing or motor activations such that the language functioning demands present in the active task could be sufficiently isolated during fMRI analysis. The most commonly employed control tasks that were generalized to various stimulation tasks included the Matching Symbols (3/6), Finger Tapping (3/6) and Cross Fixation tasks (2/6) (Figure 2). These tasks were not designed to eliminate specific patterns of brain activity one might expect to see between various active language tasks. In contrast, complementary control tasks, such as the Nonsensical Sentences and Symbol Presentation, were employed alongside the Sentence Completion and Word Generation tasks, respectively. By designing control tasks that were as similar to the activation tasks as possible, the Nonsensical Sentences and Symbol Presentation control tasks were reported to dissociate unrelated activity, inherent to the task, from patterns of activity indicative of language functioning. Control tasks that were specifically designed to the stimulation tasks were less often implemented by the various Canadian Epilepsy Centres.

The paradigm design always consisted of a block structure with a varying number of blocks. There was no consensus regarding the timing of various paradigms which reportedly ranged between three minutes, 38 s (3:38) to seven minutes, 54 s (7:54). Furthermore, the choice of fMRI data analysis, the use of software and/or programming tools, and interpretation of the results were unique to each institution (Table 2).

All survey responses regarding fMRI practices were compared to supporting literature, which included the recommendations made by the American Society of Functional Neuroradiology (ASFNR).¹⁹ Through polling all surgical centers that held ASFNR memberships, this organization evaluated the convergence of language paradigms across various institutions. With this information, they recommended a default 3-tier paradigm series for the presurgical evaluation of language lateralization. The

Table 1. Standard fMRI parameters among Canadian Epilepsy Centres compared to the American Society for Functional Neuroradiology Guidelines

Centre	Stimulation tasks	Control tasks	Paradigm design	Paradigm timing
A	· Sentence Completion · Word Generation · Naming to Description	· Matching Symbols · Finger Tapping	Block 9 Activations	7:30 mins/task
B	· Sentence Completion · Word Generation · Naming to Description	· Matching Symbols · Finger Tapping	Block 9 Activations	7:18 mins/task
C	· Sentence Completion · Verb Generation · Passive Listening	· Cross Fixation	Block 10 Activations	7:54 mins/task
D	· Sentence Completion · Word Generation · Rhyming	· Nonsensical Sentences · Symbol Presentation · Matching Line Orientation	Block 6 Activations	4:00 mins/task
E	· Sentence Completion · Verb Generation · Synonym Generation	· Matching Symbols	Block 3 Activations	3:38 mins/task
F	· Sentence Completion · Verb Generation · Syntax Choice	· Cross Fixation · Finger Tapping	Block 3 Activations	6:00 mins/task
ASFNR Guidelines	· Sentence Completion · Word Generation · Rhyming	· Nonsensical Sentences · Symbol Presentation	Block 6 Activations	4:00 mins/task

ASFNR = American Society of Functional Neuroradiology.

Table 2. Information regarding fMRI contrast analysis, calculations of laterality indices and chosen threshold values among the Canadian Epilepsy Centres

Centre	fMRI contrast analysis software	Calculation of laterality index (LI)	Threshold values
A	All tasks were analyzed together	· Python · AFNI	Upper 2% of voxel activation
B	All tasks were analyzed together	· FSL · AFNI	Upper 2% of voxel activation
C	Tasks were analyzed individually	· SPM12 toolbox	Upper 1% of voxel activation
D	All tasks were analyzed together	· FSL · excel	Upper 3%–5% of voxel activation
E	Tasks were analyzed individually	· SPM 12	Upper 5% of voxel activation
F	Tasks were analyzed individually	No LI calculations (performed visual inspection)	Upper 2.5% of voxel activation

AFNI = Analysis of Functional NeuroImages; fMRI = functional magnetic resonance imaging; FSL = FMRIB Software Library; SPM = Statistical Parametric Mapping.

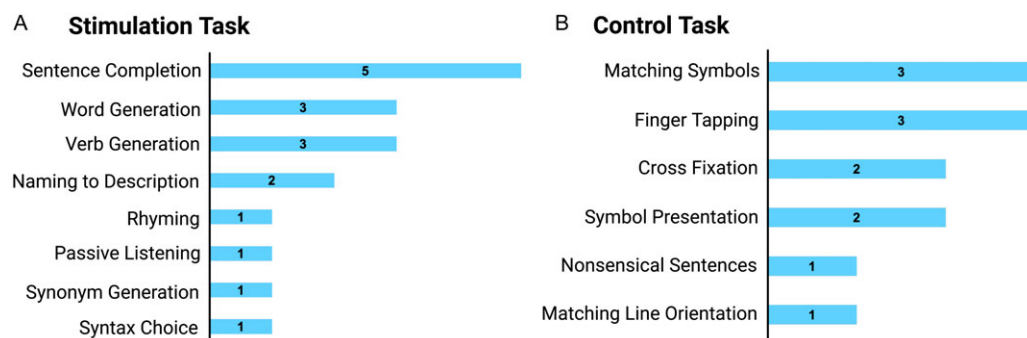


Figure 2. Frequency of various stimulation tasks (A) and controls tasks (B) among the language paradigms implemented at the surveyed Canadian Epilepsy Centres. Created with BioRender.com.

paradigm series consisted of a Sentence Completion, Word Generation and a Rhyming task.¹⁹ For all ASFNR members, the respective stimuli for each paradigm were made freely available on their website.

Outlining a sentence completion and word generation paradigm series

Using information acquired through the Canadian Epilepsy Centre Survey, in combination with consensus statements in supporting

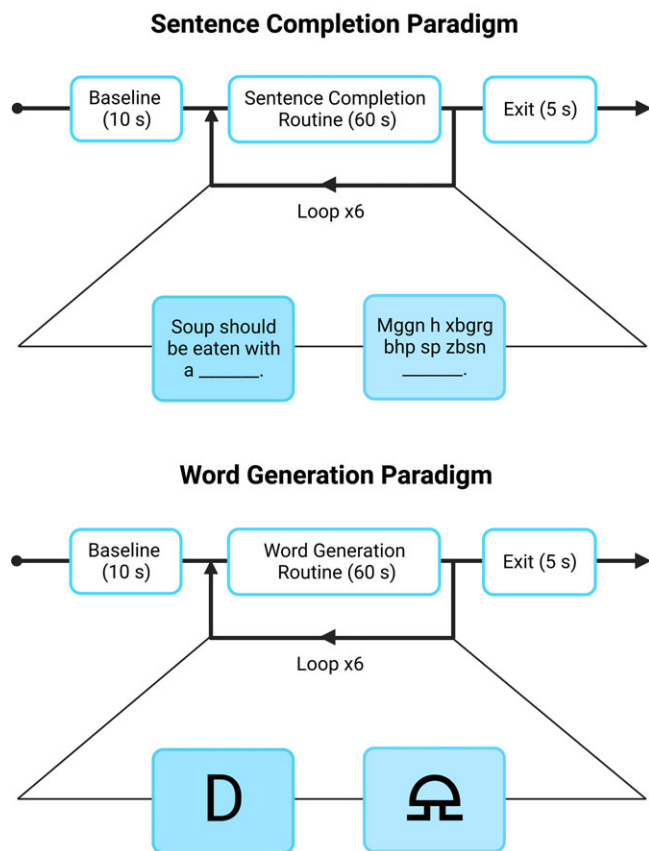


Figure 3. Illustration of the functional magnetic resonance imaging sentence completion and word generation paradigm. (A). Examples of potential sentence and nonsense condition stimuli are demonstrated. The entire paradigm lasts 6 minutes and 10 s with a total of 180 s being spent in condition. (B). Examples of potential letter and symbol condition stimuli are demonstrated. The entire paradigm lasts 6 minutes and 10 s with a total of 180 s being spent in each condition. Created with [BioRender.com](https://www.biorender.com).

literature, we outlined, with the intention to implement and test the efficacy of versions of the Sentence Completion (SC) and Word Generation (WG) language paradigms. These paradigms, in addition to a Rhyming task, are involved in the formal recommendation made by the ASFNR to evaluate language laterality in patients with various neurological disorders. Rather than recreating the slightly more complex ASFNR paradigm series, we were motivated to outline a paradigm series that could reliably assess laterality in various language areas while balancing simplicity and considering resource efficiency such that Canadian Epilepsy Surgery Centres may adopt them with ease.

Both paradigms were produced using PsychoPy, a free open-source programming software based on the Python coding language. Each language paradigm routine was formulated as a block design consisting of two consecutive blocks, each representing a different condition for 30 s: the stimulation task and the corresponding control task (Figure 3). For the choice of paradigm stimuli, prompts recommended by the ASFNR guidelines were supplemented with local additions. The two-block routine was repeated six times such that each condition was presented for a total of 180 s. Each paradigm routine was preceded by a 10 s baseline, which provided the participant with an instructional prompt, either “Sentence Completion” or “Word Generation”, before the task began. After the completion of the paradigm routine, a 5 s exit

screen was presented which thanked the volunteer for their participation.

The SC routine involved the consecutive presentation of the sentence and nonsense conditions (Figure 3). The sentence stimulation task involved the presentation of incomplete sentences where participants would be instructed before the fMRI session to think of a grammatically correct word, without vocalizing their answer, that could appropriately complete the sentence. Each sentence stimulation block presented five stimuli for six seconds each. In contrast, the complementary nonsense control task involved the presentation of nonsensical sentences based on “gibberish” control sentences provided by the ASFNR. During the nonsense condition, participants would be instructed before the fMRI session to move their gaze over the presented gibberish text without demonstrating phonological or phonemic practices which include naming the letters or segmenting the gibberish into separate sounds. These nonsensical sentences are designed to exclude semantic, syntactic and lexicalization activity that would be present and required in the active task while also controlling for the activation in the frontal eye fields responsible for moving one’s gaze over a sentence when reading.¹⁹ Each nonsense control block presented five stimuli for six seconds each.

The WG routine involved the consecutive presentation of the letter and symbol conditions (Figure 3). The letter stimulation task involved the presentation of letters where participants would be instructed before the fMRI session to think of as many words as they could that began with that letter, without vocalizing their answer. Each letter stimulation block presented two stimuli for 15 s each. Alternatively, the complementary symbol control task involved the presentation of nonsense symbols where the participants would be instructed before the fMRI session to gaze at the nonsense symbol and refrain from thinking of any letters or words. The nonsense symbols are intended to eliminate the verbal fluency activity involved in the word generation task while also controlling for the activation in areas involved in visual activation.¹⁹ Each symbol control block presented two stimuli for 15 s each.

Discussion

We demonstrate significant variation regarding fMRI practices for lateralizing language function in people with epilepsy across Canadian centers. This suggests that clinical practices could benefit from standardized practices to improve communicability between institutions, enhance patient outcomes and enhance methodologies in the surgical treatment of epilepsy. A set series of paradigms for language lateralization, chosen with guidance from literature and clinical utility, were outlined.

The functional delineation of the sentence completion and word generation tasks

The SC task, the most widely employed task across Canadian Epilepsy Centres, has been found to effectively lateralize activity in Wernicke’s Area (WA).^{19–21} This region, located in Brodman area 22, is responsible for receptive language abilities including comprehension, semantic processing and language production.²⁰ Studies that investigated the SC task in lateralizing receptive speech areas demonstrated its effective robustness compared to alternative speech paradigms in right-handed, left-handed and ambidextrous individuals.²⁰

In contrast, verbal fluency tasks such as the word generation and verb generation tasks were the second most common type of paradigm implemented across Canadian Epilepsy Centres. The subtle difference between these two tasks involves the participant receiving a specific letter cue and being asked to covertly think of any word, such as a noun, verb, or adjective, or receiving a noun and being instructed to exclusively think of associated verbs, respectively. However, performance measured in reaction times between these two similar verbal fluency tasks is related to vocabulary size and access speed into one's orthographic lexicon, which is a storage system for the spelling of familiar words.^{22,23} As a result, by limiting the participant's responses to just the verbs, as directed in the verb generation task, one may expect to see poorer performance than the word generation task that accepts more inclusive responses.

The WG task has been validated as an effective paradigm for lateralizing expressive aspects of language in Broca's Area (BA) as well as the inferior, middle and superior frontal gyri. Broca's area, found in Brodmann's areas 44 and 45, mediates expressive aspects of language such as speech production.^{19,24} The frontal gyri exhibit robust activity during this paradigm as well since this form of verbal fluency requires phonological processing, working memory and novel search strategies into an individual's orthographic lexicon.²¹

Overall, the widespread acceptance of the SC and WG paradigms across Canadian Epilepsy Centres, as well as the supporting evidence provided from relevant literature, validate this two-part paradigm series presented here as a standardized method in lateralizing language. By providing a thorough engagement of receptive and expressive aspects of language, through covert tasks that are designed to optimize performance for individuals with average or near-average IQ and normal literacy skills, the fMRI results will likely yield lateralizing activity in primary and secondary language areas.

Potential pitfalls of stimuli variation

The exact choice of stimuli used for language fMRI paradigms was largely dictated by individual centers, thereby contributing to an additional source of heterogeneity. For example, using the SC task as an example, stimulus prompts may differ such that the missing word from the sentence may be concrete or abstract nouns and/or verbs. Concrete nouns and verbs refer to an object that exists in the real world such as "spoon," "ice" or "airplane" or a literal action such as "stop," "melt" or "pay."^{25,26} Importantly, studies have identified common neural activations of concrete nouns across individuals to the extent that one can predict a pattern of activity generated by a specific concrete noun.²⁵⁻²⁷ Therefore, by designing standardized stimuli for the SC task where the missing words are concrete nouns or verbs, the variation of neural patterns between different brains will be minimized.

Minimizing variation between individual's neural activity for the WG task proves more challenging due to the unconstrained nature of the stimuli. When presenting a letter to an individual and allowing them to think of any word that begins with that letter, the patterns of activity generated from this task may vary between people due to their unique responses. While the effect may be negligible when determining laterality and comparing results between individuals, one may also consider modifying this task to include a semantic component. Instead of presenting a letter, a semantic category could be presented where an individual would generate words within that category.²⁸ For example, when

presented with a stimulus such as "clothing", appropriate answers would be "skirt", "jacket", or "blouse". Since semantic categories have neural patterns that are similarly distributed between individuals, the extent to variation in fMRI activations can be minimized.²⁶⁻²⁸

Choice of control tasks

The choice of control task is an additional component to consider when designing paradigms to lateralize language ability fMRI lateralization. An effective control task must be designed to minimize the effects of other variables, such as non-language activity, from the independent variable, language activity, that is being evaluated by a paradigm. As demonstrated in Table 1, Canadian Epilepsy Centres demonstrate variation when it concerns their choice of control tasks. Examples of control tasks for language paradigms have varying levels of engagement, ranging from finger tapping and matching symbols to viewing a cross fixation. The goal of designing any control task is to subtract out non-language components from a task such as visual activation. For the SC and WG tasks, examples of control tasks are shown in Figure 3 and include a nonsensical sentence and the presentation of a symbol.

The inclusion of the nonsensical sentence as the control condition is designed to mimic processes involved in the SC task that are irrelevant to lateralizing language including eye movements for scanning a sentence and subsequent visual processing.²⁹ Since these nonsensical sentences do not include real words with underlying semantic concepts, the lateralizing patterns of receptive aspects of language can be effectively analyzed. In addition, they are designed to exclude semantic, syntactic and lexicalization demands involved in the SC task such that these language processes can be effectively lateralized when examining condition-control contrasts. Similarly, for the WG task, the presentation of the symbol as the control task is designed to eliminate areas of activity not involved in verbal fluency, such as visual processing.¹⁹ Unlike control tasks that require more engagement and decision-making, such as matching symbols, the presentation of nonsense symbols is most similar to the active task with the only difference being the presence of verbal fluency requirements. Therefore, the subtraction procedures involved in fMRI analysis for each task will strongly enhance the lateralizing patterns of receptive and expressive language functioning by diminishing activity involved in visual demands.

Heterogeneity in fMRI analysis tools and techniques

While the choice of language tasks among the Canadian Epilepsy Surgery Centres is a source of variation within the evaluation of language laterality, the fMRI analysis tools and techniques also contribute to the heterogeneity of this clinical practice. In turn, both the paradigm design and subsequent methods of analysis would benefit from a standardized approach across Canadian Epilepsy Surgery Centres to improve the reproducibility and interpretability of language laterality results.

To assess the extent of lateralization of language functioning from fMRI results, a laterality index (LI) is typically evaluated. An LI is a measure of the number of voxels that are active above a fixed threshold in the right hemisphere versus the left hemisphere.³⁰ In turn, this value is therefore subject to change depending on the thresholding value an institution decides to use. As demonstrated in Table 2, each center reported using a different threshold of activation for their LI calculations, ranging from the top 1 to 5% of

activated voxels. While the range of threshold values used by the various Canadian Centres is considered stringent, there is no strong consensus which may contribute to challenges when interpreting and comparing results between centers. For example, if a conservative threshold value is chosen, one may unintentionally exclude relevant voxels involved in language functioning. However, a more lenient threshold value may include irrelevant activity in the LI analysis that may inappropriately skew the individual's results and mislead a clinician's evaluation. However, there are many different methods of thresholding. The most common method of thresholding involves applying a p -value cutoff from a t - or F -value statistic to each voxel's activity.³¹ Alternatively, or in combination with a p -value cutoff, a cluster size threshold approach may be employed which requires a minimum number of adjacent voxels to be activated and show spatial correlations.³¹ While the thresholding method of each Canadian Epilepsy Centre was out of the scope of our questionnaire, a combination of these two approaches, both the p -value cutoff on spatially correlated voxels, will likely produce acceptable maps that demonstrate areas of lateralized language activity and significant LI calculations.

In addition, many different forms of software are used across Canadian Epilepsy Centres for LI calculations. These include Python, Analysis of Functional NeuroImages (AFNI), FMRIB Software Library (FSL), Statistical Parametric Mapping (SPM) 12 and Microsoft Excel. One center chose to perform only visual inspections on each individual's fMRI results. Moreover, whether each center chose to analyze their tasks together or independently also revealed variability. Therefore, while we cannot confirm which thresholding value and approach, software, or analysis method is most advantageous and reliable in determining language lateralization in individuals with epilepsy, our future directions will investigate these questions. Importantly, a standardized analysis across Canadian Epilepsy Centres will improve communicability between institutions regarding fMRI results, enhance patient outcomes and enhance methodologies in the surgical treatment of epilepsy.

Study strengths and limitations

In this study, a comprehensive assessment of Canadian Epilepsy Surgery centers and their practices concerning fMRI language lateralization were provided. By summarizing the cognitive design of fMRI language paradigms, protocol structure, image acquisition, data analysis, the use of software and/or programming tools, and the interpretation of the results across various national centers, we were able to identify components of fMRI language lateralization practices that demonstrated the most consistency and also the most variability (Table 1 and Table 2). Using this information in combination with a literature-based selection of language paradigms, we suggest a two-part series of paradigms, sentence completion and word generation tasks, that met the following criteria: (1) demonstrated widespread acceptance and employment by other centers, (2) showed consistent activations in well-established language areas targeting receptive and expressive aspects, and (3) designed for individuals with average or near-average IQ and normal literacy skills.

Future directions will assess the two-part series of language paradigms presented in this study in both healthy controls and individuals with epilepsy to determine their accuracy, reliability and success in lateralizing areas involved in receptive and expressive aspects of language functioning. By further evaluating

LI values, a more thorough recommendation for an appropriate thresholding value and approach, software, or analysis method can be made. While a definitive standardized fMRI language lateralization approach for individuals with epilepsy cannot be made at this time, we hope these further investigations will yield strong conclusions that will reduce the current heterogeneity in practice across Canada.

Conclusions

The results of this study demonstrated extensive variation in fMRI language lateralization practices across many Canadian Epilepsy Centres. Using this information and supporting literature, we designed a two-part language paradigm series consisting of the SC and WG tasks aimed at lateralizing both receptive and expressive language abilities, respectively. Based on the findings from the Canadian Epilepsy Centres and support from literature, we suggest that these two paradigms be applied to healthy volunteers and patients with epilepsy to evaluate whether this approach of fMRI language lateralization demonstrates reliable clinical utility as a preoperative tool. Only then can we recommend the formal standardization of these paradigms into fMRI language lateralization practices in Canada to minimize the extent of clinical heterogeneity. Importantly, by laying the foundation of standardizing fMRI language lateralization practices across Canada, we hope to encourage the reproducibility, transparency and collective progression of using fMRI paradigms to assess language laterality and improve methodologies and patient outcomes in the surgical treatment of epilepsy.

Supplementary material. For supplementary material accompanying this paper visit <https://doi.org/10.1017/cjn.2024.56>

Author contributions. G.P.W. and M.F. designed the study, and G.P.W. obtained funding. M.F. was involved in data collection, drafting the manuscript and producing the figures and tables. G.P.W. and D.B. developed the MRI protocol and acquisition settings. G.P.W., G.S. and L.B.L. revised the manuscript.

Funding statement. This study was funded by the Queen's University Faculty of Health Sciences.

Competing interests. M.F. and D.B. have no conflict of interest to disclose. L.B.L. has received grants from CFI and accepts consulting fees from Eisai, UCB and Paladin. L.B.L. also received honorarium from Eisai, UCB, Sunovion and Paladin and support for attending meetings from Eisai and UCB. Finally, L.B.L. also has a role in the advisory boards of UCB and the Canadian League Against Epilepsy (CLAE). G.S. holds grants from the Canada Foundation of Innovation (CFI) at the Kingston General Hospital Research Institute and PSI Foundation and has received an honorarium from Paladin Pharmaceuticals for an invited lecture and expert panel discussion as well as an honorarium from Elsevier for editorship of Sleep Medicine. G.P.W. holds grants from the PSI Foundation and Canadian Institutes of Health Research, has received speaker honoraria from Eisai, UCB and Sunovion, travel support from Paladin Pharmaceuticals and has acted on the advisory board for Paladin Pharmaceuticals and Jazz Pharmaceutical.

References

- Wiebe S, Blume WT, Girvin JP, Eliasziw M. Effectiveness and efficiency of surgery for temporal lobe epilepsy study group. A randomized, controlled trial of surgery for temporal-lobe epilepsy. *N Engl J Med.* 2001;345:311–318.
- World Health Organization. Epilepsy: a public health imperative [Internet] (2019). Geneva: World Health Organization, 146. <https://apps.who.int/iris/handle/10665/325293>.

3. Ngugi AK, Bottomley C, Kleinschmidt I, Sander JW, Newton CR. Estimation of the burden of active and life-time epilepsy: a meta-analytic approach. *Epilepsia*. 2010;51:883–890.
4. Meinardi H, Scott RA, Reis R, Sander JWAS, On Behalf Of The Ilae Commission on the Developing World. The treatment gap in epilepsy: the current situation and ways forward. *Epilepsia*. 2001;42:136–149.
5. Fisher RS, Cross JH, French JA, et al. Operational classification of seizure types by the international league against epilepsy: position paper of the ILAE commission for classification and terminology. *Epilepsia*. 2017;58:522–530.
6. Englot DJ, Chang EF. Rates and predictors of seizure freedom in resective epilepsy surgery: an update. *Neurosurg Rev*. 2014;37:389–405.
7. Engel J. The current place of epilepsy surgery. *Curr Opin Neurol*. 2018;31:192–197.
8. Bradshaw AR, Thompson PA, Wilson AC, Bishop DVM, Woodhead ZVJ. Measuring language lateralisation with different language tasks: a systematic review. *PeerJ*. 2017;5:e3929.
9. Ni B, Wang X, Yu T, Wu R, Wang B. Pre-surgical language mapping in epilepsy: using fMRI in Chinese-speaking patients. *Front Hum Neurosci*. 2019;13:183.
10. Bernat JL, Peterson LM. Patient-centered informed consent in surgical practice. *Arch Surg*. 2006;141:86–92.
11. Szaflarski JP, Gloss D, Binder JR, et al. Practice guideline summary: use of fMRI in the presurgical evaluation of patients with epilepsy. *Neurology*. 2017;88:395–402.
12. Janecek JK, Swanson SJ, Sabsevitz DS, et al. Language lateralization by fMRI and Wada testing in 229 patients with epilepsy: rates and predictors of discordance. *Epilepsia*. 2013;54:314–322.
13. Binder JR, Swanson SJ, Hammeke TA, et al. Determination of language dominance using functional MRI: a comparison with the Wada test. *Neurology*. 1996;46:978–984.
14. McAndrews MP, Cohn M. Neuropsychology in temporal lobe epilepsy: influences from cognitive neuroscience and functional neuroimaging. *Epilepsy Res Treat*. 2012;2012:925238.
15. Bauer PR, Reitsma JB, Houweling BM, Ferrier CH, Ramsey NF. Can fMRI safely replace the Wada test for preoperative assessment of language lateralisation? A meta-analysis and systematic review. *J Neurol Neurosurg Psychiatry*. 2014;85:581–588.
16. Bonelli SB, Powell R, Thompson PJ, et al. Hippocampal activation correlates with visual confrontation naming: fMRI findings in controls and patients with temporal lobe epilepsy. *Epilepsy Res*. 2011;95:246–254.
17. Rosazza C, Ghielmetti F, Minati L, et al. Preoperative language lateralization in temporal lobe epilepsy (TLE) predicts peri-ictal, pre- and post-operative language performance: an fMRI study. *NeuroImage Clin*. 2013;3:73–83.
18. Trimmel K, van Graan LA, González GG, et al. Naming fMRI predicts the effect of temporal lobe resection on language decline. *Ann Clin Transl Neurol*. 2019;6:2186–2196.
19. Black DF, Vachha B, Mian A, et al. American society of functional neuroradiology-recommended fMRI paradigm algorithms for presurgical language assessment. *AJNR Am J Neuroradiol*. 2017;38:E65–E73.
20. Salek KE, Hassan IS, Kotrotsou A, et al. Silent sentence completion shows superiority localizing wernicke's area and activation patterns of distinct language paradigms correlate with genomics: prospective study. *Sci Rep*. 2017;7:12054.
21. Zacà D, Jarso S, Pillai JJ. Role of semantic paradigms for optimization of language mapping in clinical fMRI studies. *AJNR Am J Neuroradiol*. 2013;34:1966–1971.
22. Friedman L, Kenny JT, Wise AL, et al. Brain activation during silent word generation evaluated with functional MRI. *Brain Lang*. 1998;64:231–256.
23. Shao Z, Janse E, Visser K, Meyer AS. What do verbal fluency tasks measure? Predictors of verbal fluency performance in older adults. *Front Psychol*. 2014;5:772.
24. Brannen JH, Badie B, Moritz CH, Quigley M, Meyerand ME, Haughton VM. Reliability of functional MR imaging with word-generation tasks for mapping broca's area. *AJNR Am J Neuroradiol*. 2001;22:1711–1718.
25. Mitchell TM, Shinkareva SV, Carlson A, et al. Predicting human brain activity associated with the meanings of nouns. *Science*. 2008;320:1191–1195.
26. Moseley RL, Pulvermüller F. Nouns, verbs, objects, actions, and abstractions: local fMRI activity indexes semantics, not lexical categories. *Brain Lang*. 2014;132:28–42.
27. Just MA, Cherkassky VL, Aryal S, Mitchell TM. A neurosemantic theory of concrete noun representation based on the underlying brain codes. *PLOS ONE*. 2010;5:e8622.
28. Hwang K, Palmer ED, Basho S, Zadra JR, Müller R-A. Category-specific activations during word generation reflect experiential sensorimotor modalities. *NeuroImage*. 2009;48:717–725.
29. Ashtari M, Perrine K, Elbaz R, et al. Mapping the functional anatomy of sentence comprehension and application to presurgical evaluation of patients with brain tumor. *AJNR Am J Neuroradiol*. 2005;26:1461–1468.
30. Seghier ML. Laterality index in functional MRI: methodological issues. *Magn Reson Imaging*. 2008;26:594–601.
31. Gross WL, Binder JR. Alternative thresholding methods for FMRI data optimized for surgical planning. *NeuroImage*. 2014;84:554–561.