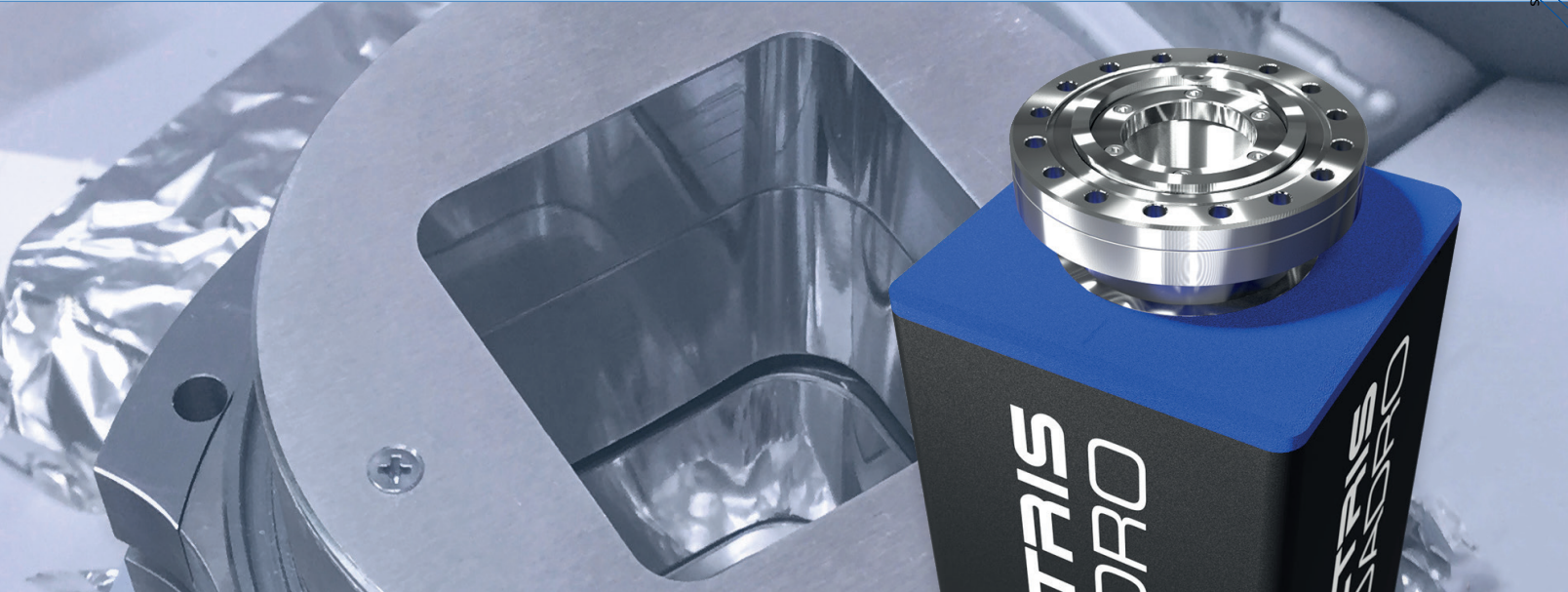
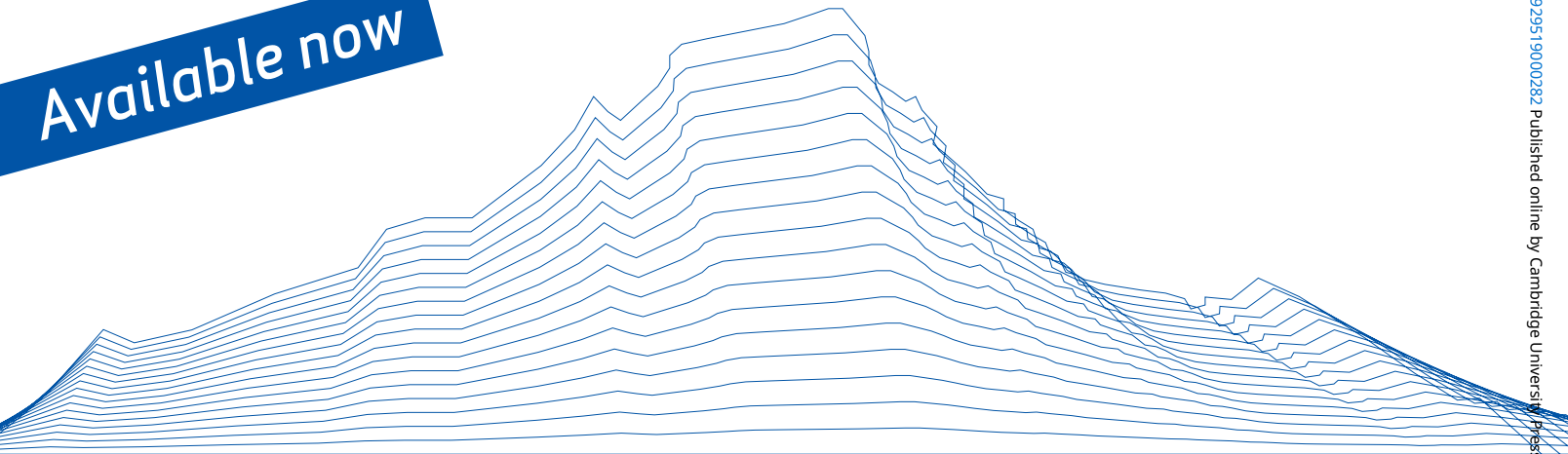


**DECTRIS**  
detecting the future

Available now



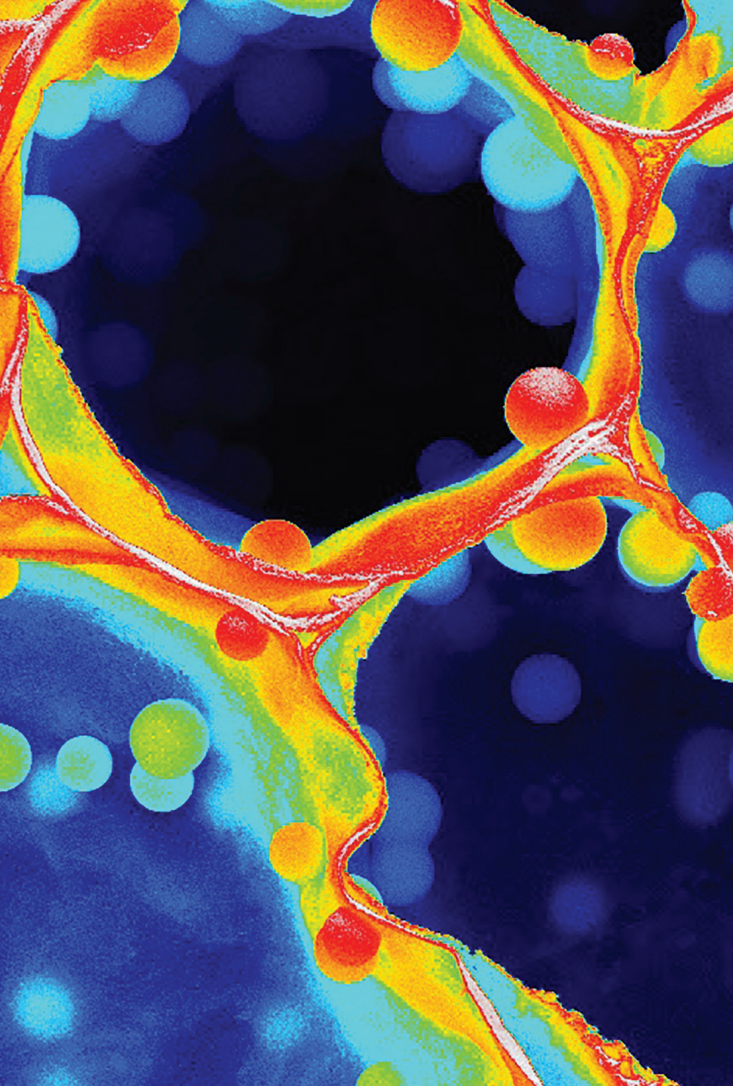
# QUADRO

detectors for EM

*The fastest direct electron detector for Materials Science TEM*

- Noise-free electron counting
- 10 million electrons/pixels/second
- Up to 18'000 frames/sec
- Huge dynamic range (32 bits)
- Radiation-hard to 300 kV





# M&M 2019

## MICROSCOPY & MICROANALYSIS

August 4-8 • Portland, OR



<https://doi.org/10.1017/S1551929519000282>

# Register Now

Early Bird Savings Deadline: **June 24**

Image: Timothy Pegg | Miami University of Ohio | Motley Spheres SLASH Prismatic Spheres



[www.microscopy.org/MandM/2019](http://www.microscopy.org/MandM/2019)  
for up-to-date meeting information



# Microscopy AND Microanalysis

**2.124**

**2017 Impact Factor**

**3 out of 10 Microscopy Journals**

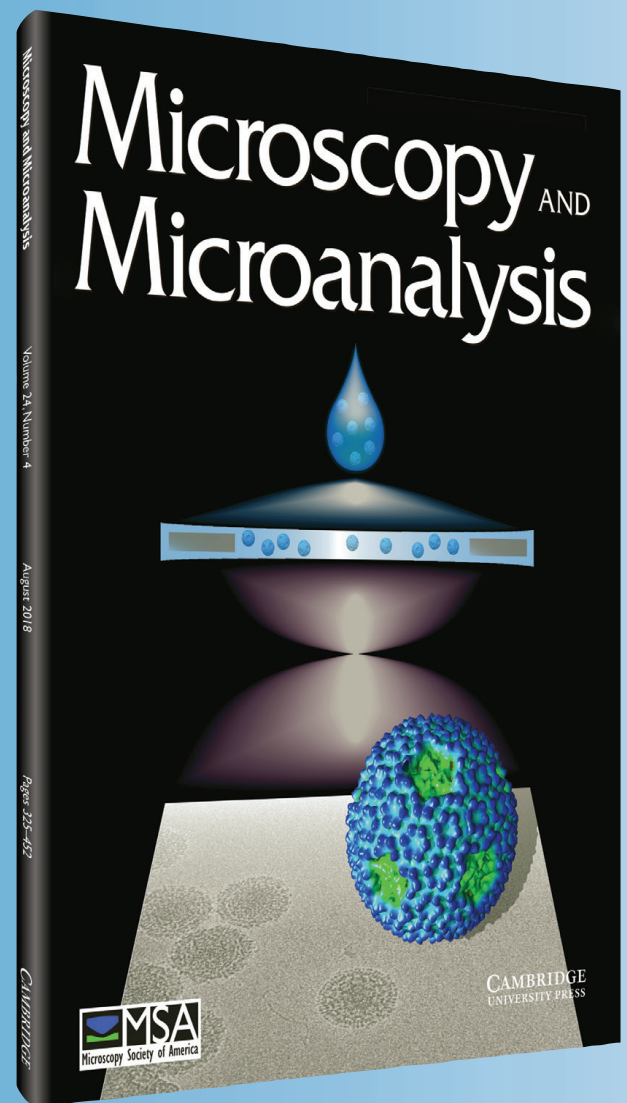
2017 Journal Citation Reports

© Clarivate Analytics

**Published for the  
Microscopy Society of America**  
Editor Dr John Mansfield

**Microscopy and Microanalysis** publishes original research papers in the fields of microscopy, imaging, and compositional analysis. This distinguished international forum is intended for microscopists in both biology and materials science.

Online submission at  
<http://mc.manuscriptcentral.com/mam>



[cambridge.org/mam](http://cambridge.org/mam)

**Cambridge Core**



**CAMBRIDGE  
UNIVERSITY PRESS**



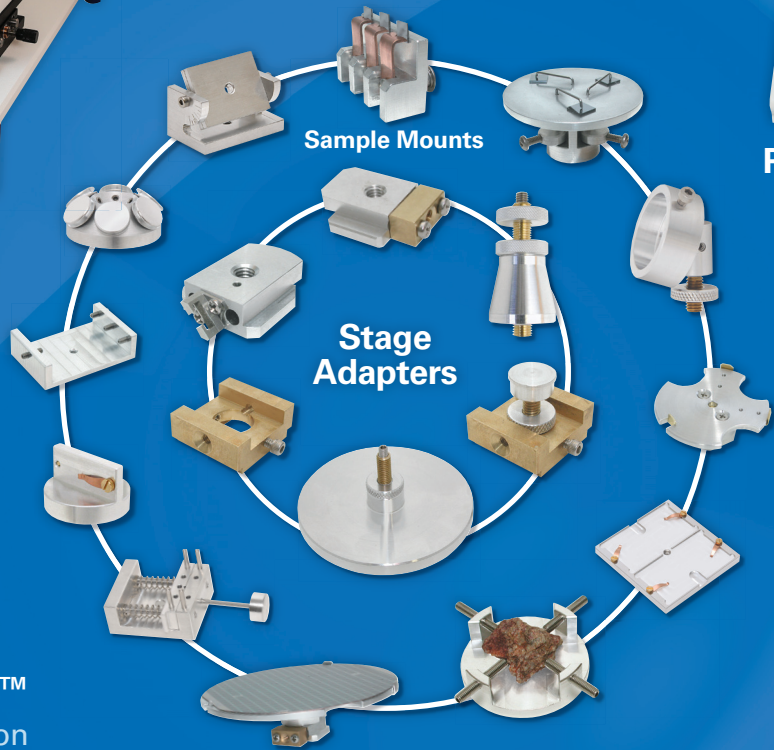
Providing microscopy supplies and specimen preparation equipment to our valued customers for over half a century.



**PELCO® Dimpler™**  
Precision Specimen Thinning for TEM

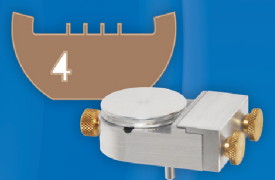


**PELCO easiGlow™**  
Glow Discharge Cleaning System



Sample Mounts

Stage Adapters

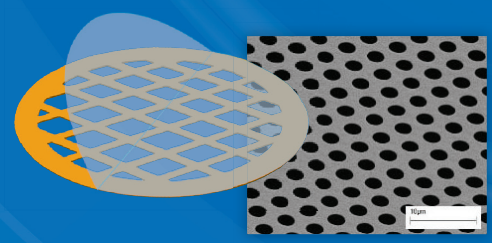


**FIB Supplies**  
Lift Out Grids - Storage Probes - FIB Mounts

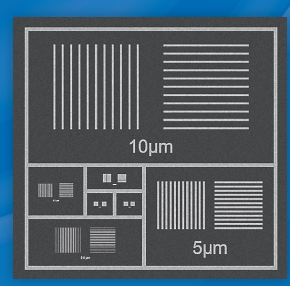


**PELCO® Tripod Polisher™**  
Precision Polishing to region of interest for TEM or SEM

**PELCO® Modular SEM Holders & Mounts**



**PELCO® TEM Support Films**  
Holey Silicon Nitride - Graphene  
Carbon - Formvar



**Pelcotec™ CDMS-XY**  
Calibration Standards - Magnification  
Resolution - LM - SEM - FESEM



www.tedpella.com sales@tedpella.com 800-237-3526





# BYE-BYE, CCD SENSORS. HELLO BASLER CMOS CAMERAS.

**START A NEW ERA AND SWITCH TO BASLER CAMERAS FOR MEDICAL & LIFE SCIENCES WITH CMOS SENSOR TECHNOLOGY AT ITS BEST.**

With Basler's MED ace, you can be sure to always get the most pristine and colorful images from a precise, stable and utterly dependable camera. Rely on star performers like Sony's Pregius and ON Semiconductor's PYTHON sensors with up to 164 frames per second and 20 MP in resolution. With DIN EN ISO 13485:2016 compliance, you benefit from both a great medical device component and reduced efforts for audits and documentation - that's how we contribute to your quick time-to-market. And the best part: it comes with an outstanding price/performance ratio.

Be prepared for Sony's discontinuation of CCD sensor technology with us as experienced partner for robust and easy-to-work-with cameras. Take the leap with Basler CMOS cameras for Medical & Life Sciences. Learn more at [baslerweb.com/MEDICAL](https://baslerweb.com/MEDICAL).

