

Access
leading
journals in
your subject

Cambridge Core

Explore today at [cambridge.org/core](https://www.cambridge.org/core)

Cambridge Core



CAMBRIDGE
UNIVERSITY PRESS

CONTENTS

Breeding and genetics

- Dugué, C., Prunier, A., Mercat, M. J., Monziols, M., Blanchet, B. and Larzul, C.*
Genetic determinism of boar taint and relationship with growth traits, meat quality and lesions 1333
- Catillo, G., Zappaterra, M., Zambonelli, P., Buttazzoni, L., Steri, R., Minelli, G. and Davoli, R.*
Genome-wide association study identifies quantitative trait loci regions involved in muscle acidic profile in Large White heavy pigs 1342
- Gómez, M. D., Sánchez, M. J., Bartolomé, E., Cervantes, I., Poyato-Bonilla, J., Demyda-Peyrás, S. and Valera, M.*
Phenotypic and genetic analysis of reproductive traits in horse populations with different breeding purposes 1351
- Haile, A., Getachew, T., Mirkena, T., Duguma, G., Gizaw, S., Wurzinger, M., Soelkner, J., Mwai, O., Dessie, T., Abebe, A., Abate, Z., Jembere, T., Rekik, M., Lobo, R. N. B., Mwacharo, J. M., Terfa, Z. G., Kassie, G. T., Mueller, J. P. and Rischkowsky, B.*
Community-based sheep breeding programs generated substantial genetic gains and socioeconomic benefits 1362

Nutrition

- Nardoia, M., Romero, C., Brenes, A., Arija, I., Viveros, A., Ruiz-Capillas, C. and Chamorro, S.*
Addition of fermented and unfermented grape skin in broilers' diets: effect on digestion, growth performance, intestinal microbiota and oxidative stability of meat 1371
- Ni, H. J., Liu, F. F., Liang, X., Yin, Y. L. and Liu, G.*
The role of zinc chelate of hydroxy analogue of methionine in cadmium toxicity: effects on cadmium absorption on intestinal health in piglets 1382
- Zhao, X., Fu, H. Y., Qiu, S. N., Teng, T., Bai, G. D., Ju, D. X., Sun, Y. C. and Shi, B. M.*
Effects of early protein restriction on the growth performance and gut development of pigs fed diets with or without antibiotic 1392
- van Erp, R. J. J., de Vries, S., van Kempen, T. A. T. G., Den Hartog, L. A. and Gerrits, W. J. J.*
Feed intake patterns nor growth rates of pigs are affected by dietary resistant starch, despite marked differences in digestion 1402
- Martin-Rosset, W., Andueza, D. and Vermorel, M.*
Comparison of three systems for predicting the digestible energy value of natural grassland and lucerne hays for horses 1413
- Loncke, C., Nozière, P., Vernet, J., Lapierre, H., Bahloul, L., Al-Jammal, M., Sauvant, D. and Ortigues-Marty, I.*
Net hepatic release of glucose from precursor supply in ruminants: a meta-analysis 1422
- Mahmoudi-Abyane, M., Alipour, D. and Moghimi, H. R.*
Effects of different sources of nitrogen on performance, relative population of rumen microorganisms, ruminal fermentation and blood parameters in male feedlotting lambs 1438
- Jonsson, N. N., Ferguson, H. J., Koh-Tan, H. H. C., McCartney, C. A., Cernat, R. C., Strachan, E. M., Thomson, W., Snelling, T. J., Harvey, C. D., Andonovic, I., Michie, C. and Wallace, R. J.*
Postmortem observations on rumen wall histology and gene expression and ruminal and caecal content of beef cattle fattened on barley-based rations 1447
- Haese, E., Krieg, J., Grubješić, G., Feyder, A. and Rodehutschord, M.*
Determination of *in situ* ruminal degradation of phytate phosphorus from single and compound feeds in dairy cows using chemical analysis and near-infrared spectroscopy 1461
- Savonen, O., Franco, M., Stefanski, T., Mäntysaari, P., Kuoppala, K. and Rinne, M.*
Grass silage pulp as a dietary component for high-yielding dairy cows 1472

Physiology and Functional Biology

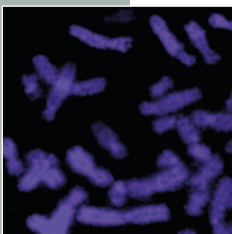
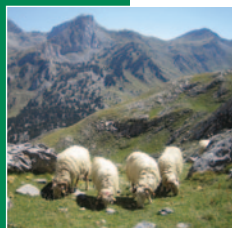
- Wang, Z., Liu, B. S., Wang, X. Y., Peng, J. L., Huang, X. Q., Tian, H., Wei, Q. H. and Wang, L. Q.*
Effects of fixed-time artificial insemination using triptorelin on the reproductive performance of pigs: a meta-analysis 1481
- Han, T., Björkman, S., Soede, N. M., Oliviero, C. and Peltoniemi, O. A. T.*
IGF-1 concentration patterns and their relationship with follicle development after weaning in young sows fed different pre-mating diets 1493
- Kim, W. S., Ghassemi Nejad, J., Peng, D. Q., Jung, U. S., Kim, M. J., Jo, Y. H., Jo, J. H., Lee, J. S. and Lee, H. G.*
Identification of heat shock protein gene expression in hair follicles as a novel indicator of heat stress in beef calves 1502
- Martínez del Pino, L., Urrutia, O., Arana, A., Alfonso, L., Mendizabal, J. A. and Soret, B.*
Expression of key myogenic, fibrogenic and adipogenic genes in *Longissimus thoracis* and *Masseter* muscles in cattle 1510

Welfare, Behaviour and Health Management

- Claramunt, M., Meikle, A. and Soca, P.*
Metabolic hormones, grazing behaviour, offspring physical distance and productive response of beef cow grazing at two herbage allowances 1520
- Nowland, T. L., Kind, K., Hebart, M. L. and van Wettere, W. H. E. J.*
Caffeine supplementation at birth, but not 8 to 12 h post-birth, increased 24 h pre-weaning mortality in piglets 1529
- Gale, P., Sechi, S., Horigan, V., Taylor, R., Brown, I. and Kelly, L.*
Risk assessment for recrudescence of avian influenza in caged layer houses following depopulation: the effect of cleansing, disinfection and dismantling of equipment 1536

Livestock Farming Systems

- Van den Broeke, A., Leen, F., Aluwé, M., Van Meensel, J. and Millet, S.*
The effect of sex and slaughter weight on performance, carcass quality and gross margin, assessed on three commercial pig farms 1546



Cambridge Core

For further information about this journal
please go to the journal web site at:
[cambridge.org/animal](https://www.cambridge.org/animal)



MIX
Paper from
responsible sources
FSC® C007785

CAMBRIDGE
UNIVERSITY PRESS