

Postprandial inflammation is not associated with endoplasmic reticulum stress in peripheral blood mononuclear cells from healthy lean men

Jana Kračmerová^{1,2}, Eva Czudková^{1,2}, Michal Koc^{1,2}, Lucia Mališová^{1,2}, Michaela Šiklová^{1,2}, Vladimír Štich^{1,2} and Lenka Rossmeislová^{1,2*}

¹Department of Sport Medicine, Third Faculty of Medicine, Charles University in Prague, Ruská 87, 100 00, Prague 10, Czech Republic

²Franco-Czech Laboratory for Clinical Research on Obesity, Third Faculty of Medicine, Charles University in Prague, Ruská 87, Prague 10, CZ-100 00, Czech Republic

(Submitted 16 September 2013 – Final revision received 7 April 2014 – Accepted 17 April 2014 – First published online 28 May 2014)

Abstract

The consumption of lipids and simple sugars induces an inflammatory response whose exact molecular trigger remains elusive. The aims of the present study were to investigate (1) whether inflammation induced by a single high-energy, high-fat meal (HFM) is associated with endoplasmic reticulum stress (ERS) in peripheral blood mononuclear cells (PBMC) and (2) whether these inflammatory and ERS responses could be prevented by the chemical chaperone ursodeoxycholic acid (UDCA). A total of ten healthy lean men were recruited to a randomised, blind, cross-over trial. Subjects were given two doses of placebo (lactose) or UDCA before the consumption of a HFM (6151 kJ; 47.4% lipids). Blood was collected at baseline and 4 h after the HFM challenge. Cell populations and their activation were analysed using flow cytometry, and plasma levels of inflammatory cytokines were assessed by ELISA and Luminex technology. Gene expression levels of inflammatory and ERS markers were analysed in CD14⁺ and CD14⁻ PBMC using quantitative RT-PCR. The HFM induced an increase in the mRNA expression levels of pro-inflammatory cytokines (*IL-1β*, 2.1-fold; *IL-8*, 2.4-fold; *TNF-α*, 1.4-fold; monocyte chemoattractant protein 1, 2.1-fold) and a decrease in the expression levels of *miR181* (0.8-fold) in CD14⁺ monocytes. The HFM challenge did not up-regulate the expression of ERS markers (*XBPI*, *HSPA5*, *EDEM1*, *DNAJC3* and *ATF4*) in either CD14⁺ or CD14⁻ cell populations, except for *ATF3* (2.3-fold). The administration of UDCA before the consumption of the HFM did not alter the HFM-induced change in the expression levels of ERS or inflammatory markers. In conclusion, HFM-induced inflammation detectable on the level of gene expression in PBMC was not associated with the concomitant increase in the expression levels of ERS markers and could not be prevented by UDCA.

Key words: Peripheral blood mononuclear cells; Ursodeoxycholic acid; Postprandial inflammation; Endoplasmic reticulum stress

The pandemic of obesity in the Western world has been attributed to the lack of physical activity and availability of highly palatable, easily digestible and energy-dense food. Palatability is based on a high content of lipids and simple sugars. However, the overconsumption of lipids and simple sugars is associated with the exaggeration of postprandial blood glucose and lipid levels⁽¹⁾. The protracted elevations of blood metabolites are the signs of postprandial dysmetabolism associated with so-called postprandial inflammation^(1–3). Postprandial inflammation is manifested by increased plasma levels of inflammatory cytokines and leucocyte activation^(4,5), although the precise contribution of blood monocytes and

lymphocytes to these pro-inflammatory changes remains unknown. While in healthy people, postprandial inflammation is transient, it is prolonged in obese people and in subjects with type 2 diabetes^(2,3,6). Thus, prolonged postprandial inflammation has been suggested to promote insulin resistance and atherosclerosis. The exact molecular trigger of postprandial inflammation is not fully elucidated yet. Nevertheless, it has been shown previously that exposure of cells to saturated lipids and a high concentration of glucose may cause endoplasmic reticulum stress (ERS), as documented by the increased mRNA levels of several ERS markers or by the increased activity of an ERS-responsive LacZ reporter

Abbreviations: ATF, activating transcription factor; DNAJC3, DnaJ (Hsp40) homolog, subfamily C, member 3; EDEM1, ER degradation enhancer, mannosidase alpha-like 1; ERS, endoplasmic reticulum stress; HFM, high-fat meal; HSPA5, heat shock 70 kDa protein 5 (glucose-regulated protein, 78 kDa); MCP1, monocyte chemoattractant protein 1; miRNA, microRNA; PBMC, peripheral blood mononuclear cell; RANTES, regulated on activation, normal T-cell expressed and secreted; TLR, Toll-like receptor; UDCA, ursodeoxycholic acid; UPR, unfolded protein response; XBPI, X-box binding protein 1; XBPIs, X-box binding protein 1 spliced.

* **Corresponding author:** L. Rossmeislová, fax +420 267 102 263, email lenka.rossmeislova@lf3.cuni.cz

system^(7–9). ERS leads to the activation of pathways that primarily decrease the burden of endoplasmic reticulum or eliminate the affected cell. Meanwhile, however, it leads to the stimulation of classic inflammatory regulatory molecules such as NF- κ B and Jun N-terminal kinase⁽¹⁰⁾. Thus, post-prandial inflammation could be triggered by ERS. Notably, ERS-induced inflammation may be alleviated by chemical chaperones such as bile acids⁽¹¹⁾. One such chemical chaperone, ursodeoxycholic acid (UDCA), currently used therapeutically for the treatment of cholestasis, has been shown to prevent chemically induced ERS *in vitro*^(12,13). Given these facts, we analysed inflammation induced by a single high-fat meal (HFM) in two subpopulations of peripheral blood mononuclear cells (PBMC) representing cells of innate and adaptive immunity, and tested whether this HFM-induced inflammation is associated with ERS. Furthermore, we investigated whether the inflammatory or ERS response may be modified or prevented by the non-toxic chemical chaperone UDCA.

Experimental methods

Subjects and study design

A total of ten healthy lean male subjects were recruited to a randomised, blind, cross-over trial consisting of two 1 d studies, separated by at least 1 week (when the subjects followed their habitual diet and level of exercise). Exclusion criteria were as follows: weight changes of >3 kg within the 3 months before the start of the study; participation in other trials; hyperbilirubinaemia; smoking; alcohol or drug abuse. The characteristics of the subjects are provided in Table 1. Subjects were given 10 mg/kg of placebo (lactose) or UDCA (Ursosan; PRO.MED.CS) in gelatin capsules with the last evening meal (20.00 hours) before the experimental day. Upon admission (08.00 hours), a catheter was placed in the antecubital vein. After baseline blood sampling, subjects were given 15 mg/kg of placebo or Ursosan. Within 15 min, they consumed a high-energy, HFM consisting of a breakfast sandwich with pork meat and egg omelette, French fries, ketchup, Nutella spread, croissant, ice tea (McDonalds; 6151 kJ; 32.8% carbohydrates, 47.4% lipids and 11.3% proteins). After the meal was consumed, blood was drawn each

hour up to the 4th hour. During the intervention, subjects had free access to drinking-water. The present study was conducted according to the guidelines laid down in the Declaration of Helsinki, and all procedures involving human subjects were approved by the ethical committee of the Third Faculty of Medicine of Charles University in Prague, Czech Republic. Written informed consent was obtained from all subjects before the study.

Determination of plasma levels of biochemical parameters

Plasma glucose levels were determined using the glucose oxidase technique (Beckman Instruments, Inc.). Plasma insulin level was measured using an Immunotech Insulin Irma kit (Immunotech). Homeostasis model assessment of the insulin resistance (HOMA-IR) index was calculated as follows:

$$\text{HOMA-IR} = (\text{fasting insulin (mU/l)} \\ \times \text{fasting glucose (mmol/l)})/22.5.$$

Plasma levels of glycerol, NEFA and TAG were measured by colorimetric enzymatic assays using kits from Randox.

Flow cytometry analysis

To determine the absolute numbers of cells in the blood, TruCOUNT tubes containing defined numbers of beads detectable by flow cytometry were used according to the manufacturer's protocol (BD Biosciences). Subpopulations of blood cells representing lymphocytes, granulocytes and monocytes were analysed according to their size and granularity. To detect specific surface antigens, whole-blood samples were stained with fluorescence-labelled monoclonal antibodies (fluorescein isocyanate-conjugated antibodies: CD4, CD14, CD16 and CD36; phycoerythrin-conjugated antibodies: CD3, CD11c, CD14, Toll-like receptor (TLR)2 and TLR4; allophycocyanin-conjugated antibodies: CD8 and CD56) or the appropriate isotype controls (BD Biosciences) for 30 min at room temperature. After cell staining, erythrocytes were lysed by erythrocyte lysis buffer for 15 min at room temperature. The cells were then washed with PBS and analysed on a FACS-Calibur flow cytometer and CellQuest Pro Software (BD Biosciences). The number of immune cells in the analysed populations was expressed as a percentage of gated events or the absolute numbers calculated from data obtained by TruCOUNT analysis. Background was set up to 5% of positive cells of the isotype control.

Isolation of peripheral blood mononuclear cells and CD14⁺ cells

PBMC were isolated by gradient centrifugation. Briefly, 9 ml of uncoagulated blood were diluted in PBS to 16 ml and applied onto Leucosep tubes (Greiner Bio-One) filled with 3 ml of Histopaque-1077 separation medium (Sigma-Aldrich). After centrifugation for 15 min at 800 g, plasma was discarded and PBMC located above the frit were transferred to a tube containing endothelial cell basal medium (PromoCell). The cells

Table 1. Characteristics of the subjects
(Mean values with their standard errors, *n* 10)

	Mean	SEM
Age (years)	26.3	1.04
BMI (kg/m ²)	23.11	0.59
Weight (kg)	77.51	2.48
Waist circumference (cm)	81.5	1.96
Fat mass (%)	13.46	1.06
Glucose (mmol/l)	4.77	0.11
Insulin (mU/l)	5.4	0.66
HOMA-IR	1.16	0.15
TAG (mmol/l)	0.82	0.13
HDL-cholesterol (mmol/l)	1.59	0.15
Total cholesterol (mmol/l)	4.81	0.28

HOMA-IR, homeostasis model assessment of the insulin resistance index.

were washed three times, diluted in isolation buffer (PBS supplemented with 0.1% bovine serum albumin and 2 mM EDTA, pH 7.4) and counted. Up to 10 million cells were mixed with 25 μ l CD14 Dynabeads (Invitrogen) and incubated on a rotator for 20 min at 4°C, and then CD14⁺ PBMC were separated with a magnet and lysed in RLT (Qiagen). CD14⁻ PBMC were collected by centrifugation and lysed in RLT. Both fractions of PBMC were then used for RNA isolation. Separation efficiency was confirmed by both fluorescence-activated cell sorting and quantitative RT-PCR analysis (data not shown).

Gene expression analysis

Total RNA was isolated using a miRNeasy Mini Kit (Qiagen). Genomic DNA was removed by DNase I treatment (Invitrogen). Complementary DNA was obtained by reverse transcription (High-Capacity cDNA Reverse Transcription Kit; Applied Biosystems) of 300 or 600 ng of total RNA. Complementary DNA equivalent to 5 ng of RNA was used for real-time PCR analysis using the Gene Expression Master Mix and Gene Expression Assay for heat shock 70 kDa protein 5 (glucose-regulated protein, 78 kDa) (*HSPA5*) (Hs99999174_m1), activating transcription factor 4 (*ATF4*) (Hs00909569_g1), *ATF3* (Hs00231069_m1), ER degradation enhancer, mannosidase alpha-like 1 (*EDEM1*) (Hs00976004_m1), DnaJ (Hsp40) homolog, subfamily C, member 3 (*DNAJC3*) (Hs00534483_m1), regulated on activation, normal T-cell expressed and secreted (*RANTES*; Hs00174575_m1), *IL-1 β* (Hs01555410_m1), *IL-8* (Hs00174103_m1), monocyte chemoattractant protein 1 (*MCP1*; Hs00234140_m1), *PPAR α* (Hs00947539_m1), *PPAR γ* (Hs01115513_m1), *TLR2* (Hs00152932_m1) and *TLR4* (Hs01060206_m1) (Applied Biosystems). *TNF- α* , X-box binding protein 1 (*XBPI*) total and *XBPI* spliced (*XBPIs*) were detected by specific primers (*TNF- α* : forward 5'-TCTCGAACCCCGAGT-GACA-3' and reverse 5'-GGCCCGGCGGTTCA-3'; *XBPI* total: forward 5'-CGCTGAGGAGGAACTGAA-3' and reverse 5'-CACTTGCTGTTCCAGCTCACTCAT-3'; *XBPIs*: forward 5'-GAGTCCGAGCAGGTGCA-3' and reverse 5'-ACTGGGTCC-AAGTTGTCCAG-3') using a SYBR Green technology (Power SYBR[®] Green Master Mix; Applied Biosystems). The microRNA (miRNA) were transcribed by a miScript II RT kit (Qiagen) without prior DNase I treatment. Complementary DNA equivalent to 1 ng of RNA was used for real-time PCR analysis using the miScript SYBR Green PCR Kit and miScript Primer Assay for *miR146a* and *miR181a* (Hs_miR-146a*_1 and Hs_miR-181a*_1; Qiagen). All samples were run in duplicate on a 7500 Fast ABI PRISM instrument (Applied Biosystems). Gene expression of target genes was normalised to the expression of ribosomal protein S13 (*RPS13*) (mRNA, Hs01011487_g1) or RNA, U6 small nuclear 2 (*RNU6-2*) (miRNA, Hs_RNU6-2_1) (Qiagen), and expressed as fold changes calculated using the $\Delta\Delta C_t$ method.

Plasma cytokine analysis

Plasma levels of leptin and adiponectin were measured by ELISA (DuoSet; R&D Systems), with a limit of detection of 62.5 pg/ml. Plasma *TNF- α* , *IL-6*, *IL-1 β* and *IL-8* levels were

measured by the MILLIPLEX MAP Human High Sensitivity Cytokine Panel (Merck), with a limit of detection of 0.13 pg/ml.

Statistical analyses

Statistical analyses were performed using GraphPad Prism 6 and SPSS 12.0 for Windows (SPSS, Inc.). Data of plasma metabolites, gene expression (ΔC_t) and flow cytometry-derived variables were log transformed, and normality of the data was assessed by the Shapiro–Wilk normality test. The effects of the HFM in the placebo and UDCA treatments were tested using the one-way and two-way ANOVA with Bonferroni *post hoc* analysis. Correlations among the relative mRNA levels were analysed using Spearman's correlation. Data are presented as means with their standard errors. Differences at the level of $P < 0.05$ were considered to be statistically significant.

Results

Postprandial changes in plasma metabolites

Evolution of postprandial plasma levels of glycerol, NEFA, TAG, glucose and insulin in response to the HFM challenge is shown in Fig. 1. NEFA levels declined after the consumption of the HFM and then gradually increased during the time course of the experiment but not above the fasting levels (Fig. 1(a)). Glycerol and TAG concentrations reached peak values 3 h after ingestion of the HFM (Fig. 1(b) and (c)). Glucose levels did not alter significantly during the whole intervention (Fig. 1(d)), whereas insulin levels increased 1 h after ingestion of the HFM and remained elevated above the fasting levels (Fig. 1(e)). Baseline plasma levels of NEFA and glycerol were lower in the UDCA treatment, though this difference did not reach a significant level. Thus, no differences in baseline or postprandial plasma levels of the tested metabolites between the placebo and UDCA treatments were detected.

Postprandial changes in blood cell populations

At the fasting state, numbers of leucocytes per μ l of blood were not different between the placebo and UDCA treatments (placebo: 9821 (SE 704) cells/ μ l; UDCA: 9380 (SE 763) cells/ μ l). The HFM challenge significantly increased the absolute numbers of monocytes, lymphocytes and granulocytes and the total numbers of leucocytes (Fig. 2(a) and (b)). This increase was similar in the presence of UDCA. In addition, the relative distribution of two main leucocyte populations, namely lymphocytes and granulocytes, in the blood changed postprandially, i.e. the relative proportion of lymphocytes decreased, while that of granulocytes decreased reciprocally in response to the test meal in the placebo treatment (data not shown). The relative proportion of monocytes within the whole leucocyte population remained unaltered in response to the HFM challenge. Given that both the relative distribution of the leucocyte population and the absolute counts of cells were affected by the consumption of the test meal, the numbers of events representing gated cells were normalised by

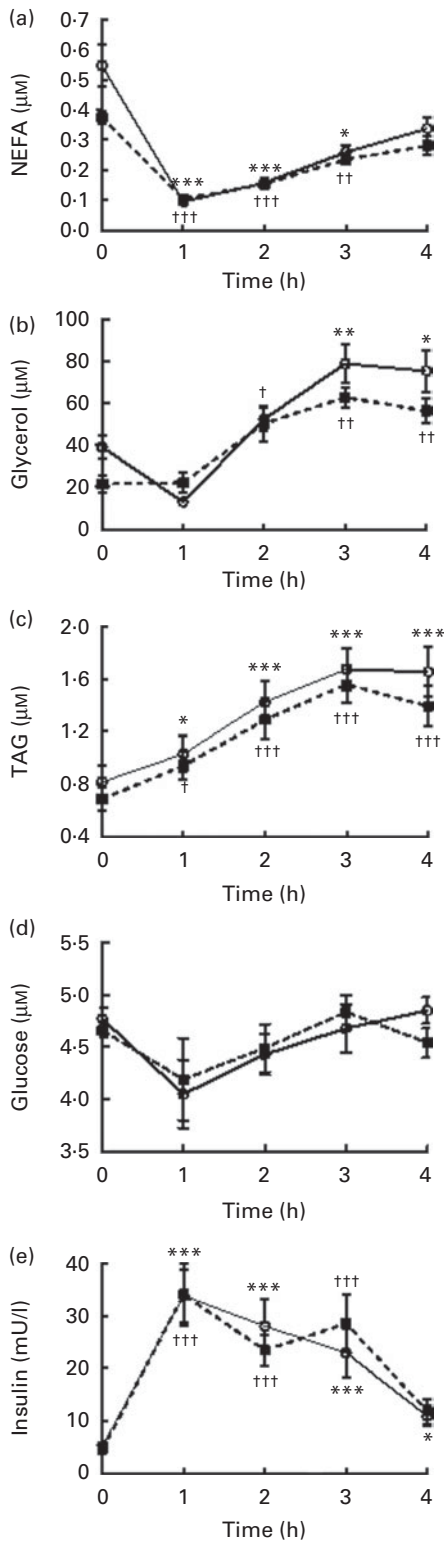


Fig. 1. Evolution of plasma levels of (a) NEFA, (b) glycerol, (c) TAG, (d) glucose and (e) insulin following a high-fat meal challenge. Values are means, with their standard errors represented by vertical bars. Mean value was significantly different from that of baseline levels in the placebo (○) treatment: * $P < 0.05$, ** $P < 0.01$, *** $P < 0.001$. Mean value was significantly different from that of baseline levels in the ursodeoxycholic acid (■) treatment: † $P < 0.05$, †† $P < 0.01$, ††† $P < 0.001$.

TruCOUNT data (the percentage of positive cells multiplied with the absolute number of events in either the monocyte, lymphocyte or granulocyte gate).

The HFM increased the counts of CD14⁺/CD11c⁺ and CD14⁺/TLR2⁺ monocytes in both placebo and UDCA treatments. The counts of CD14⁺/TLR4⁺ monocytes were increased after ingestion of the test meal in the placebo treatment only. However, only in the UDCA treatment, the HFM challenge increased the counts of CD4⁺ and CD8⁺ lymphocytes (Fig. 2(c) and (d)).

The evaluation of the expression levels of individual surface markers (expressed as geometric mean fluorescence intensity) revealed that the HFM enhanced the expression levels of the activation marker CD11c in monocytes. This increase was significant in both placebo and UDCA treatments (Fig. 2(e)).

Postprandial changes in plasma adipokines and inflammatory cytokines

Plasma levels of leptin, adiponectin, IL-8 and TNF- α did not alter during the HFM intervention in either the placebo or UDCA treatment (data not shown). Plasma IL-6 levels increased gradually over the 4 h period in both placebo and UDCA treatments (Fig. 3). However, in most samples, plasma levels of IL-1 β were under the detection limit.

Postprandial changes in the gene expression levels of cytokines in peripheral blood mononuclear cells

At baseline levels, CD14⁺ cells expressed substantially higher mRNA levels of *IL-1 β* , *IL-8*, *MCP1* and *TNF- α* and lower mRNA levels of *RANTES* compared with the CD14⁻ cell population (Fig. 4(a)). Therefore, the effect of the HFM on the expression levels of *IL-1 β* , *IL-8*, *MCP1* and *TNF- α* was analysed in CD14⁺ cells, and of *RANTES* in CD14⁻ cells.

In CD14⁺ cells, gene expression levels of all the measured cytokines were increased in response to the HFM challenge (Fig. 4(b)–(e)). This increase was similar in both treatments except for TNF- α that was not altered in response to the HFM challenge in the UDCA treatment. Subsequently, the expression levels of two miRNA (*miR181a* and *miR146a*) implicated in the negative regulation of the expression of TLR2/4 pathway members were analysed (Fig. 4(f) and (g)). The expression level of *miR181a*, but not *miR146a*, was decreased by the consumption of the test meal in both placebo and UDCA treatments. The mRNA expression level of *RANTES*, a cytokine produced by CD8⁺ lymphocytes, was decreased in CD14⁻ cells after ingestion of the HFM in the UDCA treatment only (Fig. 4(h)). This result was also confirmed when the expression of *RANTES* was normalised to the pan T-lymphocyte marker *CD3 γ* (data not shown). However, the changes in the mRNA expression levels of all the measured cytokines in response to the HFM challenge were not different between the placebo and UDCA treatments as revealed by the two-way ANOVA.

The expression levels of other genes potentially activated by dietary fatty acids (i.e. *TLR4*, *TLR2*, *PPAR α* and *PPAR γ*) were

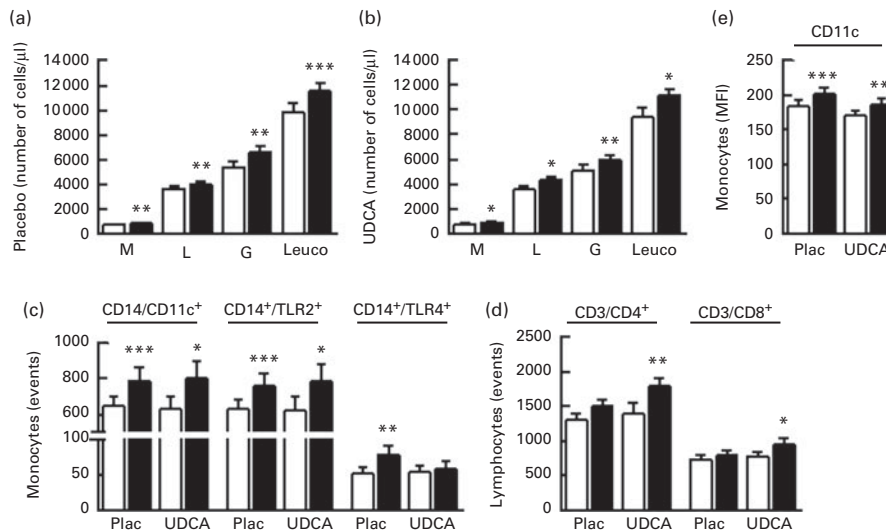


Fig. 2. Effect of the test meal on the numbers and activation of leucocytes. The absolute numbers of leucocytes at the fasting (baseline, □) state were compared with the numbers of leucocytes 4 h after a high-fat meal (■) challenge in the (a) placebo (Plac) and (b) ursodeoxycholic acid (UDCA) treatments. The number of cells in the subpopulations of (c) monocytes and (d) lymphocytes out of 10 000 events in both Plac and UDCA treatments. (e) Mean fluorescence intensity (MFI) for CD11c in monocytes. Values are means, with their standard errors represented by vertical bars. Mean value was significantly different from that of baseline levels: * $P < 0.05$, ** $P < 0.01$, *** $P < 0.001$. M, monocytes; L, lymphocytes; G, granulocytes; leuco, total leucocytes; TLR, Toll-like receptor.

not altered significantly in response to the HFM challenge (Fig. 4(i)–(l)).

Postprandial changes in the gene expression of endoplasmic reticulum markers in CD14⁺ and CD14⁻ peripheral blood mononuclear cells

First, we compared the expression levels of ERS markers between the two subpopulations of PBMC. Compared with the CD14⁻ cell population, CD14⁺ cells expressed higher mRNA levels of *ATF4*, *HSPA5* and *DNAJC3*, while both cell populations expressed the levels of *EDEM1* and *XBPI* to the same degree (Fig. 5(a)). The expression of *ATF3* was restricted to CD14⁺ cells. In response to the HFM challenge, PBMC did not alter the expression levels of *HSPA5*, *ATF4*, *EDEM1*, *XBPI* (spliced *v.* total) and *DNAJC3* in either the placebo or UDCA treatment (Fig. 5(b)–(f)). Nevertheless, the HFM challenge led to a significant increase in the mRNA levels of *ATF3* in CD14⁺ cells in both placebo and UDCA treatments (Fig. 5(g)). The relative change in *ATF3* expression induced by the test meal correlated with that in *IL-8* expression ($R = 0.745$, $P = 0.017$), but did not correlate with the change in the expression of the other cytokines. In addition, baseline mRNA levels of *DNAJC3*, *EDEM1*, *ATF4*, *XBPIs* and *HSPA5* correlated with those of *RANTES* (all correlations reached $R > 0.7$, $P < 0.03$; Fig. 5(h)).

Discussion

The aims of the present study were to (1) examine a potential association between inflammatory and ERS responses to a HFM in two subpopulations of PBMC representing cells of innate and adaptive immunity and (2) assess the potential of UDCA, a chemical chaperone, to modify or prevent these responses. Postprandial responses to the test meal were

studied in healthy lean male subjects to model the situation that precedes and could contribute to the development of obesity and the metabolic syndrome.

First, we documented the effects of the test meal, which was selected as a typical example of a Western ‘fast food’ type of diet, on postprandial plasma changes in major metabolites. The evolution of NEFA plasma concentration followed a known pattern in response to a single mixed meal, i.e. an immediate sharp decrease in NEFA levels due to the antilipolytic action of insulin, followed by increased NEFA levels dependent on the spillover fatty acids from chylomicron TAG⁽¹⁴⁾. In contrast, glucose levels remained unaltered in response to the HFM challenge, as described previously^(15–18), even though some published studies^(19–21) have shown peak glucose levels after a 30 to 60 min period following a mixed meal challenge. The observed blunted hyperglycaemic response could be caused by significant absolute and relative

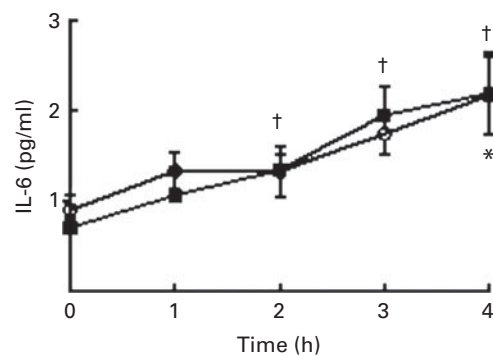


Fig. 3. Evolution of plasma levels of IL-6 following a high-fat meal challenge. Values are means, with their standard errors represented by vertical bars. * Mean value was significantly different from that of baseline levels in the placebo (○) treatment ($P < 0.05$). † Mean value was significantly different from that of baseline levels in the ursodeoxycholic acid (■) treatment ($P < 0.05$).

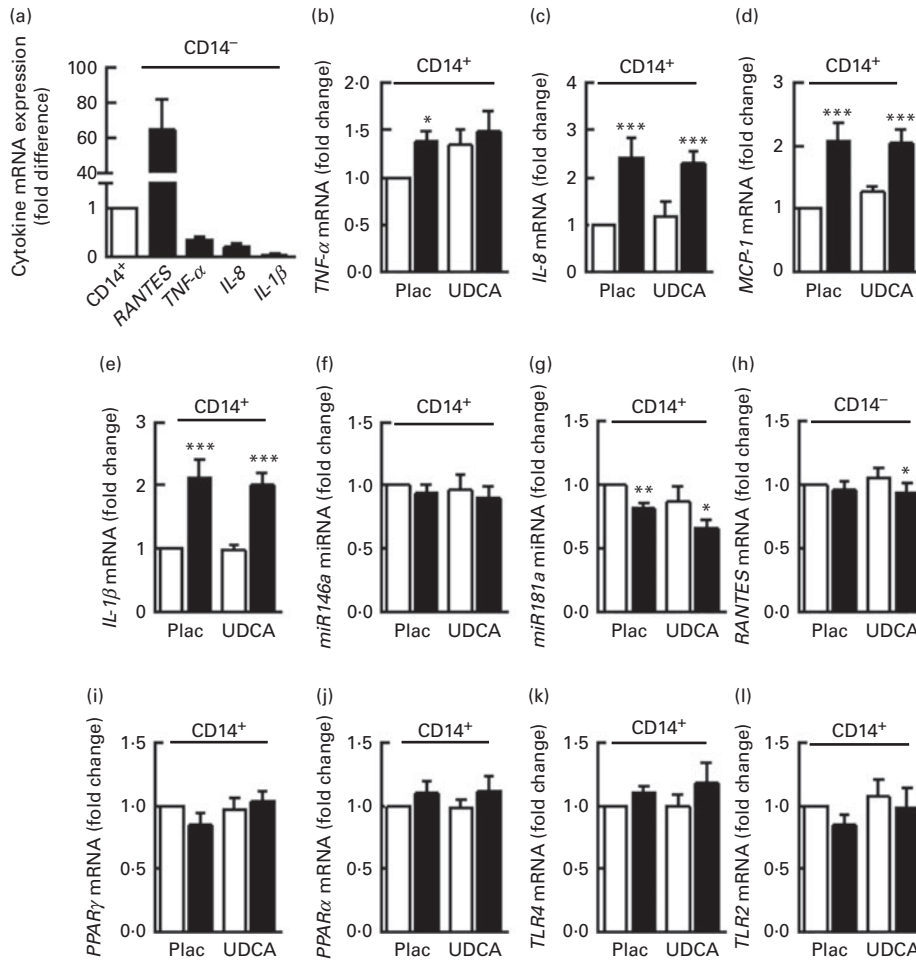


Fig. 4. Effect of the test meal on gene expression in CD14⁺ and CD14⁻ peripheral blood mononuclear cells (PBMC). (a) Comparison of mRNA expression levels of selected inflammatory cytokines between the CD14⁺ and CD14⁻ cells. Quantitative RT-PCR (qRT-PCR) analysis of cytokines (b–e, h) and miRNA (f, g) implicated in the regulation of inflammatory pathways in PBMC collected before and 4 h after a high-fat meal (HFM, ■) challenge. (i–l) qRT-PCR analysis of genes potentially activated by NEFA in CD14⁺ cells collected before and 4 h after the HFM challenge. Values are means, with their standard errors represented by vertical bars. Mean value was significantly different from that of baseline (□) levels: * $P < 0.05$, ** $P < 0.01$, *** $P < 0.001$. *RANTES*, regulated on activation, normal T-cell expressed and secreted; Plac, placebo; UDCA, ursodeoxycholic acid; *MCP1*, monocyte chemoattractant protein 1; miRNA, microRNA; TLR, Toll-like receptor.

amounts of fat and proteins in the test meal that have been shown to reduce postprandial glucose metabolism probably due to delayed gastric emptying^(17,22). Thus, the complexity of the meal, despite its high absolute (not relative) carbohydrate content, may lead to the paradoxical suppression of postprandial glucose plasma concentration.

In accordance with previous studies^(4,23), postprandial leucocytosis was observed in the present study. In line with the results by Hansen *et al.*⁽⁴⁾, the test meal used in the present study increased the absolute numbers of granulocytes in the blood. These fast changes observed in granulocyte numbers are probably caused by the release of cells from the marginal pool (cells residing in the slow-flowing lining fluid of the vasculature)⁽²⁴⁾. We have also observed an increase in the absolute counts of lymphocytes and monocytes in the blood. It should be noted that the increase in lymphocyte counts may be associated with the circadian rhythm^(25,26). Nevertheless, the meal used in the present study had higher total energy, carbohydrate and protein contents than meals

used in the previously cited studies by van Oostrom *et al.*^(25,26). Thus, these metabolic variables may have a more important role in the observed activation of lymphocytes and monocytes than in the circadian rhythm.

Postprandial inflammation was previously characterised by the increased circulating levels of several inflammatory cytokines⁽⁵⁾. We confirmed the postprandial elevation of IL-6 levels. Postprandial increases in plasma IL-6 levels were reported by others^(27,28). As mRNA levels of *IL-6* were barely detectable in CD14⁺ or CD14⁻ cells (data not shown), the elevation of IL-6 levels in the circulation was driven by other IL-6-producing cells or tissues.

Concerning HFM-induced changes in blood cells, we confirmed the finding by Gower *et al.*⁽²⁹⁾ showing increased CD11c expression on the surface of monocytes after ingestion of the HFM by healthy volunteers. CD11c is considered as an activation marker of monocytes because it enhances their adhesion to endothelial cells and the potential to migrate into target tissues. Importantly, high-fat diet feeding results

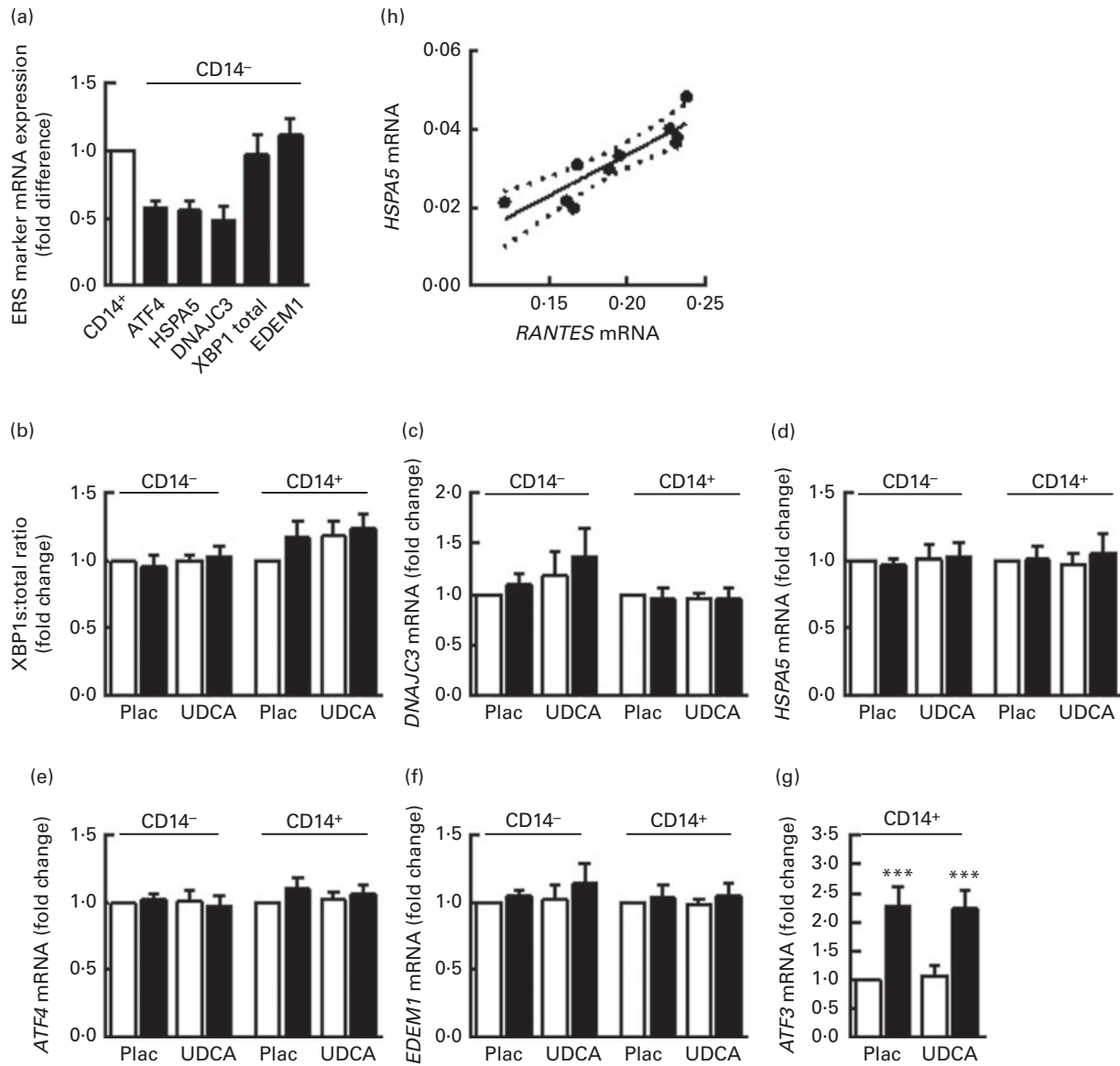


Fig. 5. Effect of the test meal on gene expression in CD14⁺ and CD14⁻ peripheral blood mononuclear cells (PBMC). (a) Comparison of mRNA expression levels of selected endoplasmic reticulum stress (ERS) markers between CD14⁺ and CD14⁻ cells. Quantitative RT-PCR analysis of ERS markers (b–g) in PBMC collected before and 4 h after a high-fat meal (■) challenge. Values are means, with their standard errors represented by vertical bars. *** Mean value was significantly different from that of baseline levels (□) ($P < 0.001$). (h) Linear regression between mRNA levels of regulated on activation, normal T-cell expressed and secreted (*RANTES*) and *HSPA5* in CD14⁻ cells at the fasting state (R^2 0.792, $P = 0.0006$). ATF, activating transcription factor; HSPA5, heat shock 70 kDa protein 5 (glucose-regulated protein, 78 kDa); DNAJC3, DnaJ (Hsp40) homolog, subfamily C, member 3; XBP1, X-box binding protein 1; EDEM1, ER degradation enhancer, mannosidase alpha-like 1; XBP1s, X-box binding protein 1 spliced; Plac, placebo; UDCA, ursodeoxycholic acid.

in the infiltration of CD11c⁺ monocytes into adipose tissue in mice^(30,31), and these monocytes/macrophages exhibit a pro-inflammatory M1 phenotype. CD11c expression has also been found to increase in blood monocytes of obese subjects and to positively correlate with homeostasis model assessment of the insulin resistance index⁽³²⁾. Therefore, a single HFM may activate monocytes in a similar direction to long-term overfeeding or obesity. This observation is important with respect to the fact that a majority of European and North American people are in a postprandial state most of the day, and therefore they might be exposed to a potentially harmful condition long before they become obese.

We then focused on gene expression in CD14⁺ (monocytes) and CD14⁻ (lymphocytes) PBMC, i.e. cells that are intimately exposed to metabolite fluctuations, but upon activation also contribute to the development of inflammation in adipose tissue in response to overfeeding. Until now, changes in gene expression induced by a meal were analysed only in the whole-PBMC population^(15,16,18). Analysis of such a mixture of cell types could mask the possible differences between the postprandial responses of mononuclear cells of innate and adaptive immunity. Therefore, we opted to separate these two categories of PBMC before gene expression analysis. Remarkably, the expression levels of all the tested pro-inflammatory

cytokines were enhanced after the HFM challenge in CD14⁺ monocytes. Moreover, we also detected decreased expression levels of *miR181a*, a negative regulator of the TLR4/NF-κB pathway⁽³³⁾. This decrease in *miR181a* expression following the HFM challenge could reinforce the synthesis of pro-inflammatory cytokines. The observed down-regulation of *miR181a* expression may be specific for inflammation induced postprandially, given that the expression level of another miRNA, *miR146a*⁽³⁴⁾, involved in the negative regulation of several pro-inflammatory cytokines remained unaltered. As noted already for CD11c expression, postprandial changes in the expression of *miR181a* and pro-inflammatory cytokines were similar to the changes in their expression associated with obesity^(33,35).

Interestingly, we did not detect any changes in the expression of genes potentially activated by dietary fatty acids (*PPARγ* and *PPARα*) in CD14⁺ cells, although these cells were postprandially exposed to high levels of lipids. Indeed, it was reported previously that a fatty meal induced an increase in the content of TAG in leucocytes⁽²³⁾, suggesting the uptake of NEFA by leucocytes. However, the present data suggest that several hours of exposure to dietary lipids are not sufficient to induce substantial expression changes in the regulators of lipid metabolism in CD14⁺ cells. The mRNA levels of *TLR2* and *TLR4* were not altered in CD14⁺ monocytes by the HFM challenge, even though we detected higher counts of CD14/TLR2- and CD14/TLR4-positive monocytes in the blood. Nevertheless, the level of fluorescence (mean fluorescence intensity) of TLR2 and TLR4 on the monocyte surface was not altered (data not shown), which confirms the results of mRNA analysis.

To determine whether postprandial inflammation could be triggered by enhanced ERS, we analysed ERS markers representing all three arms of unfolded protein response (UPR). The activation of inositol-requiring enzyme 1 (IRE) leads to XBP1 splicing, which in turn stimulates the expression of *DNAJC3* and *EDEM1* and partially *HSPA5*⁽³⁶⁾. *HSPA5* is primarily a target of the ATF6 UPR arm⁽³⁷⁾. The activation of PERK-like endoplasmic reticulum kinase (PERK) is associated with the up-regulation of *ATF4*, which in turn induces the expression of *ATF3*⁽³⁸⁾. Following the HFM challenge, mRNA expression of a majority of ERS markers was not altered in PBMC. Thus, the classic activation of UPR does not seem to be the driver of the postprandial increase in the expression levels of inflammatory cytokines in CD14⁺ monocytes. The absence of XBP1 splicing was rather surprising as it can be stimulated by insulin⁽³⁹⁾, and insulin levels were raised in response to the HFM challenge. It was also reported that higher activation of XBP1 is detectable in monocytes from obese subjects and subjects with the metabolic syndrome⁽⁹⁾. The finding that the HFM challenge does not initiate ERS in PBMC also explains the minor effects of UDCA on the expression levels of inflammatory cytokines. These minor effects could not be based on the low bioavailability of UDCA in the blood as pharmacokinetic data show that UDCA reaches a peak concentration at 60 min after oral administration and its half-life is more than 3 d. The ability of UDCA to modulate the expression levels of inflammatory

cytokines observed in the case of *TNF-α* in CD14⁺ cells and *RANTES* in CD14⁻ cells is therefore probably unrelated to its chaperone-like property. Importantly, UDCA has been shown to have an immunosuppressive potential different from its effect on ERS due to its ability to activate glucocorticoid receptors and to inhibit the TLR signalling pathway⁽¹²⁾. UDCA may also influence blood cells through binding to the G-protein-coupled bile acid receptor TGR5⁽⁴⁰⁾. However, these effects were tested mostly *in vitro* or in patients with primary biliary cirrhosis, and therefore they cannot be easily extrapolated to an *in vivo* condition in healthy men.

The only ERS marker whose expression was postprandially elevated was *ATF3*. It mostly acts as a transcriptional repressor and may thus be part of a counterbalance system in healthy individuals, protecting them from overactivation of pathways induced by stress^(41–43). Therefore, it could be envisioned that this counterbalance system is impaired in obese and/or diabetic subjects who suffer from intensified and prolonged postprandial inflammation^(2,3,6). Indeed, careful evaluation of differences in the expression levels of any putative regulator of postprandial inflammation between lean and obese subjects will be crucial for identification of mechanisms leading to pathological deregulation of this process in metabolically impaired individuals.

Interestingly, the change in *ATF3* expression induced by the HFM challenge correlated specifically with a change in *IL-8* expression. *IL-8* has recently been described as a cytokine whose expression is altered specifically by the HFM challenge⁽¹⁵⁾. *ATF3* is, however, activated not only by ERS but also by other various stresses⁽⁴⁴⁾, and the absence of the up-regulation of *ATF4* in the analysed CD14⁺ cells of *ATF3* in the classic UPR pathway suggests that the up-regulation of *ATF3* is not associated with the activation of UPR. Moreover, the lack of an increase in blood glucose concentration after the HFM challenge suggests that hyperglycaemia-induced oxidative stress is not the trigger of *ATF3* expression.

Although we did not find a relationship between HFM-induced changes in the expression levels of inflammatory cytokines and most ERS markers, the striking co-regulation of mRNA expression levels of *RANTES* and all ERS markers opens the question as to whether the higher ERS levels in CD14⁻ cells (probably CD8⁺ T cells that are the main producers of *RANTES*⁽⁴⁵⁾) could be a marker of their activation as was previously suggested for the conditions of acute pathogen infection⁽⁴⁶⁾.

In conclusion, we demonstrate the evidence that inflammation induced by the HFM challenge in CD14⁺ monocytes was not accompanied by an activation of a majority of the investigated ERS markers (*HSPA5*, *XBP1*, *DNAJC3*, *EDEM1* and *ATF4*). Administration of UDCA before the consumption of the HFM did not alter the expression levels of these ERS markers. The putative molecular trigger of postprandial inflammation remains to be established.

Acknowledgements

The authors are indebted to Zuzana Parížková for technical expertise and Timothy Johns for manuscript editing and English proofreading.

The present study was supported by grant GACR 301/11/0748 of the Grant Agency of the Czech Republic, IGA NT 144 86 of the Ministry of Health and UNCE 204015 of Charles University. These funders had no role in the design, analysis or writing of this article.

The authors' contributions were as follows: L. R. was the guarantor of the study and, as such, had full access to all the data in the study and took responsibility for the integrity of the data and the accuracy of the data analysis, and also designed the study, performed the data analysis and wrote the manuscript; J. K., E. C., M. K. and L. M. performed the experiments and data analysis and contributed to the discussion; E. C. organised the clinical part of the study; M. S. and V. S. contributed to the discussion and the writing of the manuscript. All authors read and approved the final manuscript.

The authors declare that there are no conflicts of interest.

References

- O'Keefe JH, Gheewala NM & O'Keefe JO (2008) Dietary strategies for improving post-prandial glucose, lipids, inflammation, and cardiovascular health. *J Am Coll Cardiol* **51**, 249–255.
- Calder PC, Ahluwalia N, Brouns F, *et al.* (2011) Dietary factors and low-grade inflammation in relation to overweight and obesity. *Br J Nutr* **106**, Suppl. 3, S5–S78.
- Margioris AN (2009) Fatty acids and postprandial inflammation. *Curr Opin Clin Nutr Metab Care* **12**, 129–137.
- Hansen K, Sickelmann F, Pietrowsky R, *et al.* (1997) Systemic immune changes following meal intake in humans. *Am J Physiol* **273**, R548–R553.
- Burdge GC & Calder PC (2005) Plasma cytokine response during the postprandial period: a potential causal process in vascular disease? *Br J Nutr* **93**, 3–9.
- Patel C, Ghanim H, Ravishankar S, *et al.* (2007) Prolonged reactive oxygen species generation and nuclear factor- κ B activation after a high-fat, high-carbohydrate meal in the obese. *J Clin Endocrinol Metab* **92**, 4476–4479.
- Hotamisligil GS (2010) Endoplasmic reticulum stress and the inflammatory basis of metabolic disease. *Cell* **140**, 900–917.
- Pineau L, Colas J, Dupont S, *et al.* (2009) Lipid-induced ER stress: synergistic effects of sterols and saturated fatty acids. *Traffic* **10**, 673–690.
- Sage AT, Holtby-Ottenhof S, Shi Y, *et al.* (2012) Metabolic syndrome and acute hyperglycemia are associated with endoplasmic reticulum stress in human mononuclear cells. *Obesity (Silver Spring)* **20**, 748–755.
- Zhang K & Kaufman RJ (2008) From endoplasmic-reticulum stress to the inflammatory response. *Nature* **454**, 455–462.
- Engin F & Hotamisligil GS (2010) Restoring endoplasmic reticulum function by chemical chaperones: an emerging therapeutic approach for metabolic diseases. *Diabetes Obes Metab* **12**, Suppl. 2, 108–115.
- Poupon R (2012) Ursodeoxycholic acid and bile-acid mimetics as therapeutic agents for cholestatic liver diseases: an overview of their mechanisms of action. *Clin Res Hepatol Gastroenterol* **36**, Suppl. 1, S3–S12.
- Berger E & Haller D (2011) Structure–function analysis of the tertiary bile acid TUDCA for the resolution of endoplasmic reticulum stress in intestinal epithelial cells. *Biochem Biophys Res Commun* **409**, 610–615.
- Fielding B (2011) Tracing the fate of dietary fatty acids: metabolic studies of postprandial lipaemia in human subjects. *Proc Nutr Soc* **70**, 342–350.
- Esser D, Oosterink E, op 't Roodt J, *et al.* (2013) Vascular and inflammatory high fat meal responses in young healthy men; a discriminative role of IL-8 observed in a randomized trial. *PLOS ONE* **8**, e53474.
- Bouwens M, Grootte Bromhaar M, Jansen J, *et al.* (2010) Postprandial dietary lipid-specific effects on human peripheral blood mononuclear cell gene expression profiles. *Am J Clin Nutr* **91**, 208–217.
- Lan-Pidhainy X & Wolever TM (2010) The hypoglycemic effect of fat and protein is not attenuated by insulin resistance. *Am J Clin Nutr* **91**, 98–105.
- Myhrstad MC, Narverud I, Telle-Hansen VH, *et al.* (2011) Effect of the fat composition of a single high-fat meal on inflammatory markers in healthy young women. *Br J Nutr* **106**, 1826–1835.
- Radulescu A, Hassan Y, Gannon MC, *et al.* (2009) The degree of saturation of fatty acids in dietary fats does not affect the metabolic response to ingested carbohydrate. *J Am Coll Nutr* **28**, 286–295.
- Phillips LK, Peake JM, Zhang X, *et al.* (2013) Postprandial total and HMW adiponectin following a high-fat meal in lean, obese and diabetic men. *Eur J Clin Nutr* **67**, 377–384.
- Murakami M, Une N, Nishizawa M, *et al.* (2013) Incretin secretion stimulated by ursodeoxycholic acid in healthy subjects. *Springerplus* **2**, 20.
- Brand-Miller JC, Colagiuri S & Gan ST (2000) Insulin sensitivity predicts glycemia after a protein load. *Metabolism* **49**, 1–5.
- Alipour A, van Oostrom AJ, Izraeljan A, *et al.* (2008) Leukocyte activation by triglyceride-rich lipoproteins. *Arterioscler Thromb Vasc Biol* **28**, 792–797.
- Klonz A, Wonigeit K, Pabst R, *et al.* (1996) The marginal blood pool of the rat contains not only granulocytes, but also lymphocytes, NK-cells and monocytes: a second intravascular compartment, its cellular composition, adhesion molecule expression and interaction with the peripheral blood pool. *Scand J Immunol* **44**, 461–469.
- van Oostrom AJ, Sijmonsma TP, Rabelink TJ, *et al.* (2003) Postprandial leukocyte increase in healthy subjects. *Metabolism* **52**, 199–202.
- van Oostrom AJ, Rabelink TJ, Verseyden C, *et al.* (2004) Activation of leukocytes by postprandial lipemia in healthy volunteers. *Atherosclerosis* **177**, 175–182.
- Gregersen S, Samocha-Bonet D, Heilbronn LK, *et al.* (2012) Inflammatory and oxidative stress responses to high-carbohydrate and high-fat meals in healthy humans. *J Nutr Metab* **2012**, 238056.
- Manning PJ, Sutherland WH, McGrath MM, *et al.* (2008) Postprandial cytokine concentrations and meal composition in obese and lean women. *Obesity (Silver Spring)* **16**, 2046–2052.
- Gower RM, Wu H, Foster GA, *et al.* (2011) CD11c/CD18 expression is upregulated on blood monocytes during hypertriglyceridemia and enhances adhesion to vascular cell adhesion molecule-1. *Arterioscler Thromb Vasc Biol* **31**, 160–166.
- Brake DK, Smith EO, Mersmann H, *et al.* (2006) ICAM-1 expression in adipose tissue: effects of diet-induced obesity in mice. *Am J Physiol Cell Physiol* **291**, C1232–C1239.
- Lumeng CN, Bodzin JL & Saltiel AR (2007) Obesity induces a phenotypic switch in adipose tissue macrophage polarization. *J Clin Invest* **117**, 175–184.

32. Wu H, Perrard XD, Wang Q, *et al.* (2010) CD11c expression in adipose tissue and blood and its role in diet-induced obesity. *Arterioscler Thromb Vasc Biol* **30**, 186–192.
33. Hulsmans M, Sinnaeve P, Van der Schueren B, *et al.* (2012) Decreased miR-181a expression in monocytes of obese patients is associated with the occurrence of metabolic syndrome and coronary artery disease. *J Clin Endocrinol Metab* **97**, E1213–E1218.
34. Balasubramanyam M, Aravind S, Gokulakrishnan K, *et al.* (2011) Impaired miR-146a expression links subclinical inflammation and insulin resistance in type 2 diabetes. *Mol Cell Biochem* **351**, 197–205.
35. Ghanim H, Aljada A, Hofmeyer D, *et al.* (2004) Circulating mononuclear cells in the obese are in a proinflammatory state. *Circulation* **110**, 1564–1571.
36. Lee AH, Iwakoshi NN & Glimcher LH (2003) XBP-1 regulates a subset of endoplasmic reticulum resident chaperone genes in the unfolded protein response. *Mol Cell Biol* **23**, 7448–7459.
37. Yoshida H, Haze K, Yanagi H, *et al.* (1998) Identification of the *cis*-acting endoplasmic reticulum stress response element responsible for transcriptional induction of mammalian glucose-regulated proteins. Involvement of basic leucine zipper transcription factors. *J Biol Chem* **273**, 33741–33749.
38. Jiang HY, Wek SA, McGrath BC, *et al.* (2004) Activating transcription factor 3 is integral to the eukaryotic initiation factor 2 kinase stress response. *Mol Cell Biol* **24**, 1365–1377.
39. Winnay JN, Boucher J, Mori MA, *et al.* (2010) A regulatory subunit of phosphoinositide 3-kinase increases the nuclear accumulation of X-box-binding protein-1 to modulate the unfolded protein response. *Nat Med* **16**, 438–445.
40. Kawamata Y (2003) A G protein-coupled receptor responsive to bile acids. *J Biol Chem* **278**, 9435–9440.
41. Zmuda EJ, Qi L, Zhu MX, *et al.* (2010) The roles of *ATF3*, an adaptive-response gene, in high-fat-diet-induced diabetes and pancreatic beta-cell dysfunction. *Mol Endocrinol* **24**, 1423–1433.
42. Whitmore MM, Iparraguirre A, Kubelka L, *et al.* (2007) Negative regulation of TLR-signaling pathways by activating transcription factor-3. *J Immunol* **179**, 3622–3630.
43. Suganami T, Yuan X, Shimoda Y, *et al.* (2009) Activating transcription factor 3 constitutes a negative feedback mechanism that attenuates saturated fatty acid/Toll-like receptor 4 signaling and macrophage activation in obese adipose tissue. *Circ Res* **105**, 25–32.
44. Hai T, Wolford CC & Chang YS (2010) ATF3, a hub of the cellular adaptive-response network, in the pathogenesis of diseases: is modulation of inflammation a unifying component? *Gene Expr* **15**, 1–11.
45. Conti P, Barbacane RC, Feliciani C, *et al.* (2001) Expression and secretion of RANTES by human peripheral blood CD4⁺ cells are dependent on the presence of monocytes. *Ann Clin Lab Sci* **31**, 75–84.
46. Kamimura D & Bevan MJ (2008) Endoplasmic reticulum stress regulator XBP-1 contributes to effector CD8⁺ T cell differentiation during acute infection. *J Immunol* **181**, 5433–5441.