

Prevention of non-enzymic glycation of proteins by dietary agents: prospects for alleviating diabetic complications

Megha Saraswat, P. Yadagiri Reddy, P. Muthenna and G. Bhanuprakash Reddy*

Biochemistry Division, National Institute of Nutrition, Hyderabad 500 604, India

(Received 30 May 2008 – Revised 10 September 2008 – Accepted 12 September 2008 – First published online 6 November 2008)

The accumulation of advanced glycation endproducts (AGE) due to non-enzymic glycation of proteins has been implicated in several pathophysiological processes associated with ageing and diabetes. The formation of AGE is accelerated in hyperglycaemic conditions, which alter the structure and function of long-lived proteins. Thus inhibition of the formation of AGE is believed to play a role in the prevention of diabetic complications. In the present study we evaluated the antiglycating effect of aqueous extracts of various plant-based foods. The effect of aqueous extracts of these agents in terms of their ability to prevent the accumulation of AGE due to fructose-mediated *in vitro* glycation of eye lens soluble proteins was investigated. The degree of protein glycation in the absence and presence of dietary extracts was assessed by different complementary methods, i.e. non-tryptophan AGE fluorescence, AGE-induced cross-linking by SDS-PAGE and glyco-oxidative damage by carbonyl assay. Five out of the seventeen agents tested showed significant inhibitory potential against *in vitro* protein glycation in a dose-dependent manner. Prominent among them were ginger, cumin, cinnamon, black pepper and green tea, which inhibited *in vitro* AGE formation to lens proteins 40–90% at 1.0 mg/ml concentration. Assessing their potential to reduce the amount of glycated protein using boronate affinity chromatography and also their ability to prevent the formation of specific antigenic-AGE structures by immunodetection further substantiated the importance of ginger, cumin and cinnamon in reducing AGE burden. These findings indicate the potential of some dietary components to prevent and/or inhibit protein glycation. Thus these dietary agents may be able to be exploited for controlling AGE-mediated diabetic pathological conditions *in vivo*.

Protein glycation: Advanced glycation endproducts: Diabetic complications: Advanced glycation endproducts-inhibitors: Dietary agents

An overwhelming body of evidence indicates that non-enzymic glycation of proteins is implicated in a number of biochemical abnormalities associated with ageing and diabetes. The glycation reaction occurs between the carbonyl group of sugars and the amino group of proteins (predominantly the ϵ -amino group of lysine and the guanidine group of arginine), which finally results in the formation of advanced glycation endproducts (AGE)^(1–3). Glycosylated Hb (HbA1c) is one of the abundant glycated proteins, used most widely in monitoring the glycaemic status of individuals with diabetes⁽²⁾. Although AGE formation takes place during the ageing process, it is accelerated in hyperglycaemic conditions. Glycation alters protein conformation and stability and induces protein aggregation and cross-linking^(4,5). It has been shown that the formation of AGE *in vivo* contributes to several pathophysiological processes associated with ageing and diabetes mellitus, such as arthritis, atherosclerosis, chronic renal insufficiency, Alzheimer's disease, nephropathy, neuropathy and cataract^(3,6–9). Many cells possess receptors for AGE (RAGE). Interaction of AGE with RAGE leads to activation of NF- κ B, which stimulates the generation of pro-inflammatory and adhesion molecules that underlie the pathology of diabetic vascular complications^(3,10–12). The degree of accumulation of AGE is related to the severity

of diabetic complications such as nephropathy, neuropathy, retinopathy and cataract^(3,9).

Since studies have shown the role of AGE in promoting diabetic complications, it is considered that inhibition of AGE formation may prevent the progression of diabetic complications. However, designing a drug having anti-AGE activity is a challenge due to the complexity of reactions involved in the formation of AGE. A nucleophilic hydrazine compound, aminoguanidine, has shown promising results *in vitro* and in animal models in terms of inhibition of AGE formation and has entered into phase three clinical trials^(3,13,14). However, the trial was terminated due to various safety concerns^(3,14). A number of other agents such as pyridoxamine, carnosine, taurine, 2-isopropylidenehydrazono-4-oxo-thiazolidin-5-ylacetanilide (OPB-9195) and phenyl thiazolium bromide have been investigated in several *in vitro* and *in vivo* studies and have shown promising results^(3,15,16). However, except pyridoxamine, none has progressed, as yet, to the stage of clinical trials. Thus, there is a need for developing new antiglycating agents combining higher levels of efficacy, selectivity and safety in humans. Many dietary agents, particularly spices, are a major part of traditional medicine that has been practised to control many chronic ailments including diabetes^(17–20).

Abbreviations: AGE, advanced glycation endproducts; ALR, aldose reductase; BSA, bovine serum albumin; CML, carboxymethyllysine; HMW, high-molecular-weight; KLH, keyhole limpet haemocyanin; MGO, methylglyoxal; RNase, ribonuclease.

* **Corresponding author:** Dr G. Bhanuprakash Reddy, fax +91 40 27019074, email geereddy@yahoo.com

Hence, in the present study we investigated the antiglycating activity of aqueous extracts of plant materials that are commonly used in the diet and/or traditional medicine. An *in vitro* protein glycation system was utilised to evaluate the antiglycating potential of these agents with a multi-pronged approach.

Materials and methods

Materials

Fructose, bovine serum albumin (BSA), keyhole limpet haemocyanin (KLH), ribonuclease (RNase), methylglyoxal (MGO), Freund's complete and incomplete adjuvant, *m*-aminophenyl boronic acid and horseradish peroxidase-conjugated goat anti-rabbit antibody were obtained from Sigma-Aldrich (St Louis, MO, USA). Glyoxylic acid and sodium cyanogen bromide were purchased from ICN Biochemicals (Aurora, OH, USA). All other chemicals and solvents used were of analytical grade.

Preparation of aqueous extracts of dietary agents

Dietary material was obtained fresh from the local market. The edible parts of the material were freeze-dried and powdered. The following dietary materials were used: fruits of *Malus pumila* (apple), *Momordica charantia* (bitter melon), *Psidium guajava* (guava), *Citrus limetoides* (lemon), *Cucumis sativus* (cucumber) and *Citrus sinensis aurantium* (orange); seeds of *Cuminum cyminum* (cumin), *Brassica juncea* (mustard), *Piper nigrum* (black pepper) and *Trachyspermum ammi* (omum); leaves of *Ocimum sanctum* (basil), *Camellia sinensis* (green tea) and *Spinaceae oleracea* (spinach); bulb of *Allium sativum* (garlic) and *A. sepa* (onion); bark of *Cinnamomum zeylencium* (cinnamon); root of *Zingiber officinalis* (ginger). Aqueous extracts (5%) were prepared from these materials, stirring at room temperature for 3 h. Insoluble material was removed by centrifugation followed by filtration. The water extracts were freeze-dried and stored under desiccation at 4°C. The selection criteria of plants relied on their hypoglycaemic activity^(17–20) and also on the fact that they are commonly consumed in the diet or used as herbal remedies in various pathological conditions including diabetes.

Preparation of advanced glycation endproduct antigens

AGE-RNase and AGE-BSA were prepared as described previously⁽²¹⁾. Briefly, RNase (25 mg/ml) or BSA (50 mg/ml) was incubated with 1 M-glucose in 0.2 M-phosphate buffer (pH 7.4) containing 0.05% sodium azide at 37°C for 90 d. Low-molecular-weight reactants and unbound sugars were removed by extensive dialysis. Carboxymethyllysine (CML)-KLH was prepared as described previously⁽²²⁾. MGO-BSA was prepared as described previously⁽⁴⁾.

Production of polyclonal anti-advanced glycation endproduct antibodies

Antibodies were produced against AGE-RNase, CML-KLH and MGO-BSA by immunising female New Zealand white rabbits as described previously^(4,22). Rabbits aged

8–12 weeks were immunised at multiple sites on their backs by subcutaneous administration of a 1 ml solution containing 1 mg/ml AGE-protein antigen in Freund's complete adjuvant and subsequently three boosters were given at 3-week intervals in Freund's incomplete adjuvant. For testing the titres, rabbits were bled intermittently from the ear vein and the titre was checked by immunoblot analysis. The rabbits were bled after the last booster, and the serum was collected by centrifugation. Animal care and protocols were followed in accordance with and approved by the Institutional Animal Ethics Committee. Antiserum was partially purified by ammonium sulfate fractionation followed by diethylaminoethyl-sepharose anion exchange chromatography to obtain the IgG-rich fraction.

In vitro glycation of proteins

Eye lens soluble protein was prepared from 6-month-old goat lenses as described previously⁽²³⁾. A 10% homogenate of goat lenses was prepared in PBS (pH 7.4) and centrifuged at 10 000 g for 30 min at 4°C. The supernatant fraction (lens soluble protein) was used for *in vitro* glycation. Each 1 ml reaction mixture contained 10 mg of lens soluble protein, 0.2 M-phosphate buffer (pH 7.4), 0.1 M-fructose, 50 µg of penicillin and streptomycin and 0.01% sodium azide. Reactions tubes were incubated in the dark at 37°C for 3 weeks. At the end of the incubation, unbound sugars were removed by dialysis against the same buffer. Protein concentration was determined by Lowry's method using BSA as standard. Stock solutions of all the reaction contents were filtered through 0.20 µm syringe filters. The rationale behind using the lens protein as a model protein was its longevity and susceptibility to extensive accumulation of AGE, which is accelerated in diabetes-associated pathologies^(4,5,22,23).

Inhibition studies with dietary extracts

For inhibition studies, concentrated stocks of the aqueous extracts of the dietary agents were prepared in water. Stock solutions of the dietary extracts were filtered through 0.20 µm syringe filters. Various concentrations of these extracts (typically 0.01, 0.1, 1.0 and 10 mg/ml) were added to the *in vitro* protein glycation assay mixture and incubated in the dark at 37°C for 3 weeks as described above. At the end of the incubation, unbound reactants were removed by dialysis and protein concentration was determined as described above. The extent of protein glycation in the absence and presence of dietary aqueous extracts was evaluated by monitoring protein cross-linking on SDS-PAGE, AGE-related non-tryptophan fluorescence, protein carbonyl content, phenyl boronate affinity chromatography and immunoblotting as described below. The percentage of inhibition with extracts was calculated, considering the extent of glycation in the absence of extract as 100%.

Fluorescence measurements

Non-tryptophan AGE fluorescence was monitored using 0.15 mg/ml protein in 20 mM-sodium phosphate buffer (pH 7.4) by exciting at 370 nm; emission was recorded between 400 and 500 nm using a spectrofluorometer (Jasco FP-6500;

Jasco, Tokyo, Japan). The formation of high-molecular-weight (HMW) aggregates and cross-linked peptides obtained as a result of protein glycation of eye lens soluble protein was monitored by SDS-PAGE using 12 % gels.

Glyco-oxidative damage

Non-enzymic glycation-mediated glyco-oxidative damage of lens proteins was monitored by estimating total protein carbonyls according to the method of Uchida *et al.* (24).

Immunodetection of advanced glycation endproducts

The formation of specific AGE products was detected with immunoblotting using anti-CML-KLH, anti-MGO-BSA and anti-AGE-RNase antibodies. Glycated proteins were resolved on a 12 % SDS-PAGE. After SDS-PAGE, proteins were transferred onto nitrocellulose membrane. The membrane was incubated for 2h in blocking buffer containing 5 % skimmed milk powder. Subsequently, it was incubated with the respective primary antibodies (AGE-RNase, 1:1000; CML-KLH, 1:2000; MGO-BSA, 1:2000) separately. The membrane was then incubated with horseradish peroxidase-conjugated goat anti-rabbit antibody (1:5000), and substrate buffer containing diaminobenzidine and H₂O₂ was used for detection.

Affinity chromatography

The extent of glycation of lens proteins in the absence and presence of dietary agents was determined using phenyl boronate affinity chromatography (22,23). In the present study, 5 mg of glycated lens protein was passed through a phenyl boronate affinity column (8 × 1 cm) equilibrated with 0.25 M-ammonium acetate buffer (pH 8.5) containing 0.05 M-MgCl₂. The unbound fraction containing non-glycated protein was washed with the above buffer, while bound glycated protein was eluted using 0.1 M-2-amino-2-hydroxymethyl-propane-1,3-diol-HCl (pH 7.5) containing 0.2 M-sorbitol.

Statistical analysis

Results were expressed as mean values and standard deviations. Data were analysed using SPSS software (version 15.0; SPSS, Inc., Chicago, IL, USA). Mean values were compared by one-way ANOVA with *post hoc* tests of the least significant difference method. Heterogeneity of variance was tested by the non-parametric Mann-Whitney test. Differences between comparisons of groups were considered to be significant at $P < 0.05$.

Results

Out of the seventeen dietary materials tested, the aqueous extracts of five or six agents showed significant antiglycating activity. Though the extracts showed a dose-dependent inhibition of protein glycation with concentrations ranging from 0.01 to 10 mg/ml, the response varied with the extract and with the method of detection of glycation. For example,

while the aqueous extracts of ginger, cinnamon, cumin and green tea decreased AGE fluorescence by 80–90 % at the concentration of 1 mg/ml, black pepper, basil, apple, bitter gourd, lemon, orange and garlic extract showed 30–50 % inhibition at the same concentration (Fig. 1 and Table 1). Despite their heterogeneity, propensity to form covalent cross-links is the common consequence of AGE, which leads to the formation of HMW aggregates on proteins. We monitored the fructose-induced cross-links of lens proteins (above 30 kDa) and also HMW aggregates above 200 kDa by SDS-PAGE (not shown). In terms of preventing protein cross-links and HMW aggregates of proteins, the aqueous extracts of ginger, cinnamon, cumin, green tea, lemon, apple, garlic and black pepper showed effects of 30–80 % at the concentration of 1 mg/ml (Fig. 2 and Table 1). The extracts of cinnamon, ginger, cumin, black pepper, basil, green tea and garlic were effective against glyco-oxidative damage as they could prevent the formation of protein carbonyl by 30–65 % at the concentration of 1 mg/ml (Fig. 3 and Table 1).

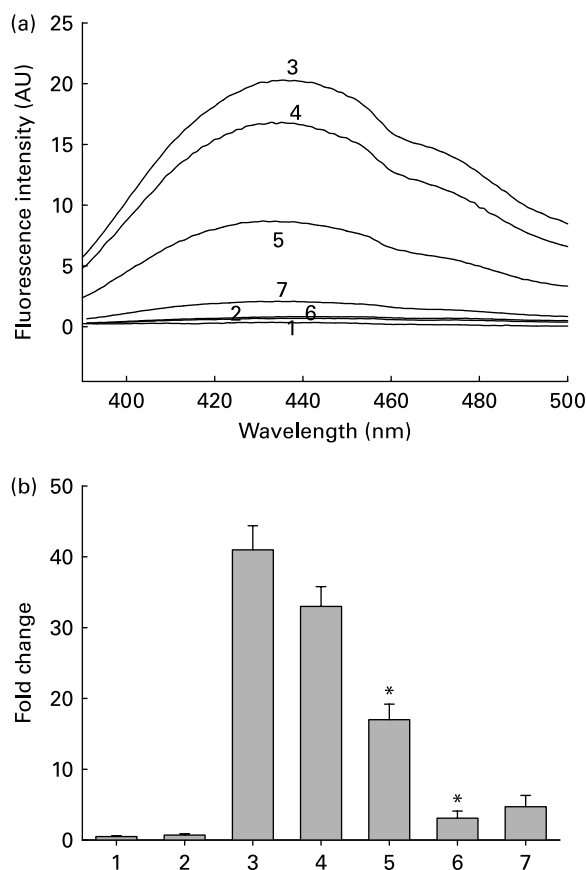


Fig. 1. (a) Representative non-tryptophan advanced glycation endproduct (AGE)-related fluorescence of soluble lens protein upon *in vitro* glycation in the absence and presence of aqueous extracts of ginger. Trace 1, protein alone; trace 2, protein + 1.0 mg/ml extract; trace 3, protein + 100 mM-fructose; trace 4, protein + fructose + 0.01 mg/ml extract; trace 5, protein + fructose + 0.1 mg/ml extract; trace 6, protein + fructose + 1.0 mg/ml extract; trace 7, 1.0 mg/ml extract alone; AU, arbitrary units. (b) Fold change in non-tryptophan AGE fluorescence was calculated considering the emission intensity (at 440 nm) of protein alone as one-fold. Bars 1–7 correspond to traces 1–7 in (a). Values are the means of three independent experiments, with standard errors represented by vertical bars. * Mean value was significantly different from that of bar 3 ($P < 0.05$).

Table 1. Antiglycating activity of aqueous extracts of dietary agents against *in vitro* glycation of lens protein†

(Mean values with their standard errors of three independent experiments)

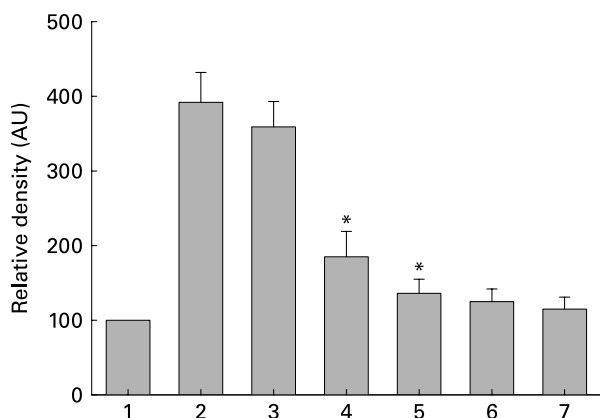
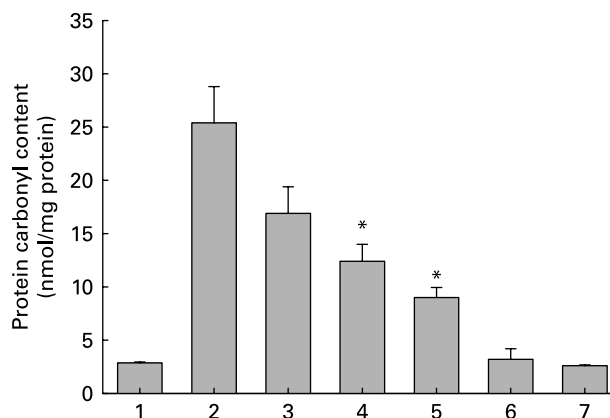
Extract	Percentage reduction at 1.0 mg/ml					
	AGE fluorescence		SDS-PAGE		Protein carbonyls	
	Mean	SE	Mean	SE	Mean	SE
Ginger	93*	13	78*	11	64*	9.3
Cinnamon	88*	15	53*	8.2	64*	10
Cumin	86*	12	51*	9.1	59*	11
Green tea	86*	10	45*	7.8	39*	7.4
Black pepper	50*	8.5	33*	5.2	40*	7.6
Basil	45*	7.8	8.0	3.1	40*	6.5
Apple	43*	7.3	36*	6.1	7.0	2.5
Bitter gourd	40*	6.1	7.0	2.7	8.0	3.0
Lemon	37*	6.6	45*	9.3	13	4.0
Garlic	31*	6.3	30*	6.4	31*	4.7
Orange	29*	4.7	23*	5.2	14	2.2
Cucumber	7.4	3.9	1.0		9.7	4.9
Onion	5.5	3.7	3.1		24	6.1
Spinach	NA		NA		NA	
Onum	NA		NA		NA	
Guava	NA		NA		NA	
Mustard	NA		NA		NA	

AGE, advanced glycation endproducts; NA, no activity.

* Statistically significant ($P < 0.05$).

† Percentage reduction of AGE by aqueous extracts was determined considering the formation of AGE in the absence of extracts as 100% as evaluated by AGE fluorescence (Fig. 1), SDS-PAGE (Fig. 2) and protein carbonyl content (Fig. 3). The relative ability of the extracts to reduce AGE formation was determined at 1.0 mg/ml.

Based on relative ability to reduce protein glycation with three complementary methods, i.e. AGE fluorescence, protein cross-linking and carbonyl content of the protein, the antiglycating activity of ginger, cinnamon and cumin was noteworthy, as these three agents prevented AGE formation

**Fig. 2.** Densitometry quantification of cross-linked and aggregated proteins upon *in vitro* glycation in the absence and presence of aqueous extracts of ginger based on SDS-PAGE analysis (not shown). Intensity of protein bands above 31 kDa was quantified considering the intensity of protein alone as 100%. Bar 1, protein alone; bar 2, protein + 100 mM-fructose; bar 3, protein + fructose + 0.01 mg/ml extract; bar 4, protein + fructose + 0.1 mg/ml extract; bar 5, protein + fructose + 1.0 mg/ml; bar 6, protein + 1.0 mg/ml extract; bar 7, 1.0 mg/ml extract alone; AU, arbitrary units. Values are the means of three independent experiments, with standard errors represented by vertical bars. * Mean value was significantly different from that of bar 2 ($P < 0.05$).**Fig. 3.** Protein carbonyl content of soluble lens protein upon *in vitro* glycation in the absence and presence of aqueous extracts of ginger. Trace 1, protein alone; trace 2, protein + 100 mM-fructose; trace 3, protein + fructose + 0.01 mg/ml extract; trace 4, protein + fructose + 0.1 mg/ml extract; trace 5, protein + fructose + 1.0 mg/ml extract; trace 6, protein + 1.0 mg/ml extract; trace 7, 1.0 mg/ml extract alone. Values are the means of three independent experiments, with standard errors represented by vertical bars. * Mean value was significantly different from that of bar 2 ($P < 0.05$).

by more than 50% at 1.0 mg/ml in all of the three complementary methods. While black pepper, green tea, apple, basil, lemon and garlic exhibited moderate but significant antiglycating activity, the rest of the agents were not significant in reducing the *in vitro* protein glycation. Further, we investigated the impact of the inhibition of protein glycation by ginger, cinnamon and cumin using boronate affinity chromatography. The proportion of glycated protein was 46% upon incubation of lens soluble proteins with fructose for 21 d (Fig. 4). Reduction in the amount of glycated protein in the presence of extract was evaluated considering the amount of glycated protein in the absence of extracts as 100%. Aqueous extracts of ginger, cinnamon and cumin reduced the amount of glycated protein in a dose-dependent manner. For example, extracts of ginger, cinnamon and cumin reduced glycated protein by 63, 54 and 44%, respectively, at the concentration of 1.0 mg/ml, whereas at the concentration of 0.1 mg/ml the reduction was found to be 45, 42 and 30%, respectively.

Although the above-described results showed the ability of dietary extracts to inhibit or prevent AGE formation in an empirical manner, these chemical methods might not be able to help in bringing about the specific inhibition or prevention of particular AGE products by these extracts. Hence, we investigated the ability of ginger, cinnamon and cumin to decrease specific AGE formation by immunodetection. We used three different anti-sera raised against CML-KLH, MGO-BSA, AGE-RNase and AGE-BSA. Data obtained with immunoblotting demonstrated the presence of diverse antigenic determinants over the protein (Fig. 5). For example, anti-CML-KLH detected HMW aggregates > 118 kDa along with some cross-linked species of approximately 45 and 20–30 kDa. Anti-MGO-BSA detected cross-linked species between 20–30 and 36–45 kDa along with HMW aggregates > 118 kDa. Anti-AGE-RNase demonstrated the presence of HMW aggregates > 118 kDa and also cross-linked species at about 85 kDa. Results with anti-AGE-BSA were similar to that of anti-AGE-RNase (data not shown).

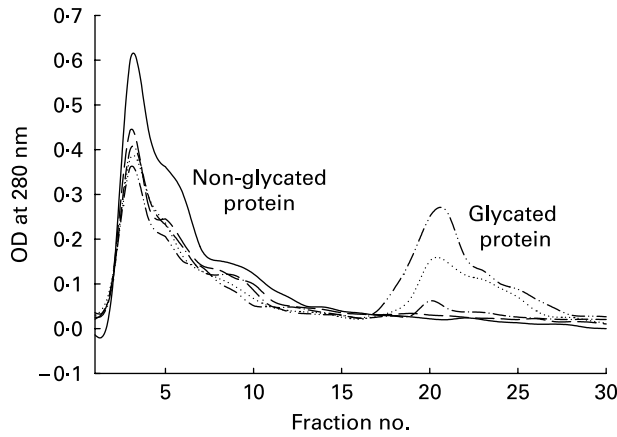


Fig. 4. The effect of aqueous extracts of ginger on the amount of glycosylated protein in soluble lens protein upon *in vitro* glycation as analysed by phenyl boronate affinity chromatography. (—), Protein alone; (---), protein + 100 mM-fructose; (·····), protein + fructose + 0.01 mg/ml ginger; (-·-·-), protein + fructose + 0.1 mg/ml ginger; (- - -), protein + fructose + 1.0 mg/ml ginger. OD, optical density.

Densitometry analysis indicated that AGE antigens detected by CML and MGO antisera were more prominent than those detected by glucose antisera (Fig. 5). Nonetheless, the aqueous extracts of cinnamon, ginger and cumin reduced the formation of all the above-mentioned antigenic AGE structures on lens proteins in a dose-dependent manner (Fig. 5 and Table 2). At 1.0 mg/ml, while these three extracts could reduce CML- and MGO-derived AGE by approximately 70–80%, glucose-derived AGE products were reduced by approximately 60% (Table 2). Since these AGE are the main protagonists of diabetic complications, their reduction by ginger, cinnamon and cumin highlights their antiglycating ability and in turn potential in ameliorating diabetic complications.

Discussion

Prolonged exposure to uncontrolled chronic hyperglycaemia in diabetes can lead to various complications, both of macro- and microvascular nature, such as cardiovascular, renal, neurological and ocular^(25,26). In view of the widespread

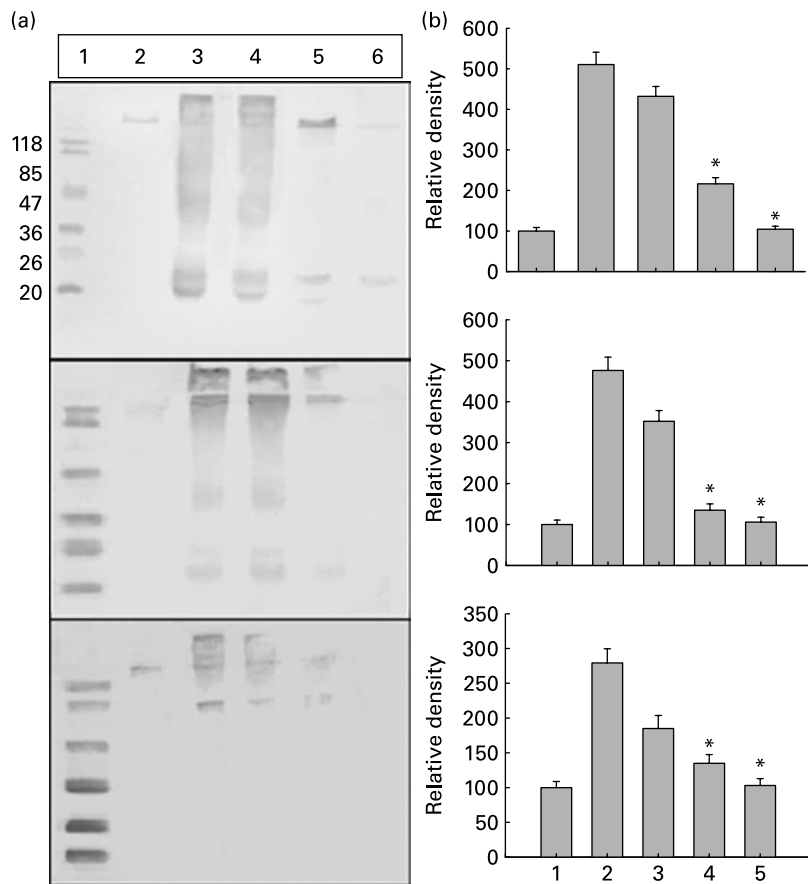


Fig. 5. Immunodetection of advanced glycation endproducts (AGE) in soluble lens protein. (a) Representative Western blot profile of soluble lens protein upon *in vitro* glycation in the absence and presence of aqueous extracts of cinnamon. Blots were probed with anti-carboxymethyllysine-keyhole limpet haemocyanin (top), anti-methylglyoxal-bovine serum albumin (middle) and anti-AGE-ribonuclease antibodies (bottom). Lane 1, molecular-weight markers; lane 2, protein alone; lane 3, protein + 100 mM-fructose; lane 4, protein + fructose + 0.01 mg/ml extract; lane 5, protein + fructose + 0.1 mg/ml extract; lane 6, protein + fructose + 1.0 mg/ml extract. (b) Densitometry analysis of AGE. Intensity of AGE signals was quantified considering the intensity of lane 2 as 100%. Bars 1–5 correspond to lanes 2–6 in (a). Values are the means of three independent experiments, with standard errors represented by vertical bars. * Mean value was significantly different from that of bar 2 ($P < 0.05$).

Table 2. Reduction of antigenic advanced glycation endproduct (AGE) structures by aqueous extracts of ginger, cinnamon and cumin as evaluated by immunoblotting†

(Mean values with their standard errors of three independent experiments)

AGE products	Ginger				Cinnamon				Cumin			
	0.1 mg/ml		1.0 mg/ml		0.1 mg/ml		1.0 mg/ml		0.1 mg/ml		1.0 mg/ml	
	Mean	SE	Mean	SE	Mean	SE	Mean	SE	Mean	SE	Mean	SE
CML-KLH	65*	3.2	79*	3.0	54*	2.9	77*	3.2	17*	1.4	70*	1.4
MGO-BSA	64*	2.8	78*	2.9	55*	1.7	74*	2.6	19*	1.7	71*	3.1
AGE-RNase	51*	2.3	63*	3.2	47*	3.3	58*	2.8	45*	2.2	53*	2.7

CML, carboxymethyllysine; KLH, keyhole limpet haemocyanin; MGO, methylglyoxal; BSA, bovine serum albumin; RNase, ribonuclease.

* Mean value was significantly different from that in the absence of dietary extracts ($P < 0.05$).

† Degree of antigenic AGE was assessed by Western blot (Fig. 5 (a)) and quantified by densitometry analysis (Fig. 5 (b)). Percentage of reduction in AGE formation in the presence of the extracts was estimated using densitometry analysis considering the density of AGE in the absence of extract as 100%.

prevalence of diabetes in Southeast Asian countries^(27–30), secondary complications of diabetes may pose major health problems in this part of the world. Non-enzymic glycation (the Maillard reaction) is a complex series of reactions between reducing sugars and free amino groups of lysine residues of proteins, which leads to browning and cross-linking of the proteins. The reaction is initiated by the reversible formation of a Schiff's base, which undergoes a rearrangement to form a relatively stable Amadori product. The Amadori product further undergoes a series of reactions through dicarbonyl intermediates to form AGE^(1–3). AGE is a collective term referred to a heterogeneous group of chemical structures such as protein-AGE adducts (CML), protein-protein cross-links (pentosidine) and glyoxal- or MGO-derived-lysine dimers^(2,3,10,31). Further, food-derived AGE (from dairy products, bread, meat, tobacco and many processed foods), as a result of the Maillard reaction, have become an unrecognised risk factor for diabetic complications^(3,12). In view of the ever-expanding role of AGE in diabetes and age-associated pathologies, it has been suggested that inhibition of the formation of AGE may prevent the progression of diabetic complications and slow down the ageing process⁽³²⁾. Although some recent studies highlighted the antiglycating potential of a few natural sources, namely garlic⁽³³⁾, green tea⁽³⁴⁾ and tomato⁽³⁵⁾, adequate work has not yet been done.

The results of the present study showing the inhibition of protein glycation by dietary agents merit attention in many respects. Most of these plant and spice materials are expected to be largely free from adverse effects as they are either consumed as dietary components routinely or used in traditional medicines. Glycation and AGE-induced toxicity are known to be associated with increased free radical production. Recent studies have demonstrated the benefits of using compounds with combined antiglycation and antioxidant properties^(33,34). Such compounds not only prevent AGE formation but also reduce free radical-mediated toxicity. In this context, most of the antiglycating agents described in the present study are expected to have antioxidant potential. Furthermore, the low-molecular-weight compounds such as polyphenols, phenolic acids or flavonoids, which are known to have antioxidant activity, are likely to be present in aqueous extracts^(36,37). Hence it is the cumulative effect of antioxidant and antiglycating activities that might contribute to effective action. However, the *in vitro* results may not reflect the effects of

these agents *in vivo*, as they undergo some cooking process followed by the liver first-pass effect, which invariably affect the content, activity and bioavailability of bioactive compounds; hence further investigations are needed to address these issues. Thus we have investigated the impact of the antiglycating potential of a few prominent agents such as cumin⁽²²⁾ and ginger⁽³⁸⁾ and dietary agents with other properties^(39,40) under *in vivo* conditions using the streptozotocin-induced diabetic cataract rat model. Irrespective of the effect of cooking and digestion on content and bioavailability, beneficial effects observed with these agents in animal models (under *in vivo* conditions)^(22,38–40) provide an indication of their potential utility for the management of diabetic complications.

Activation of the polyol pathway due to increased aldose reductase (ALR)-2 activity *per se* and/or along with protein glycation has also been implicated in the development of diabetic complications⁽²⁶⁾. Several studies suggest that the compounds that inhibit ALR2 could be effective in the prevention of certain complications⁽⁴¹⁾. In addition to the antiglycating property described in the present study, previously we have demonstrated that many of these agents including cinnamon, cumin, basil, and black pepper inhibited ALR2 (M Saraswat and GB Reddy, unpublished results). Therefore, multiple properties of these agents might make them more potent to prevent diabetic complications. In addition to the above-described dietary agents, we have previously shown that curcumin from turmeric⁽³⁹⁾ and tannoids of *Embllica officinalis*⁽⁴⁰⁾ delay diabetic cataract in rats mainly through inhibition of eye lens ALR2. Attempts are underway to identify the active principles responsible for inhibition of protein glycation by the dietary agents used in the study and to investigate their ability to delay or prevent diabetic complications.

Nutritional intervention has been shown to have an important role in the management of diabetes and its complications. Current dietary strategies are centred on nutrients, energy restriction, and antioxidant and hypoglycaemic effects but are not focused on the antiglycating activity of and ALR2 inhibition by dietary components. Further, food- (or exogenously) derived AGE have become an unrecognised risk factor for diabetic complications⁽¹²⁾. Therefore, effective restriction of those dietary components and/or modulation of food-derived AGE by blending those foods with the diet

sources having antiglycating potential should be considered for the optimal management of AGE-mediated pathologies, particularly for those who are at risk of developing diabetic complications.

Acknowledgements

Part of this work was presented at the Annual Meeting of the Association for Research in Vision and Ophthalmology (ARVO) held at Fort Lauderdale (FL, USA) during 27 April to 1 May 2008.

M. S. received a research fellowship from the Indian Council of Medical Research, Government of India; P. M. received a research fellowship from the University Grants Commission, Government of India; G. B. R. received grants from the Indian Council of Medical Research and the Department of Science and Technology, Government of India.

M. S. was involved in data collection, data analysis, data interpretation, literature search and manuscript preparation. P. Y. R. and P. M. were involved in data collection, data analysis and data interpretation. G. B. R. was involved in study design, data analysis, data interpretation, literature search, manuscript preparation and review of the manuscript.

There were no conflicts of interest.

References

1. Baynes JW, Watkins NG, Fisher CI, *et al.* (1989) The Amadori product on protein: structure and reactions. *Prog Clin Biol Res* **304**, 43–67.
2. Bry L, Chen PC & Sacks DB (2001) Effects of hemoglobin variants and chemically modified derivatives on assays for glycohemoglobin. *Clin Chem* **47**, 153–163.
3. Sing R, Barden A, Mori T, *et al.* (2001) Advanced glycation end products: a review. *Diabetologia* **44**, 129–146.
4. Kumar MS, Reddy PY, Kumar PA, *et al.* (2004) Effect of dicarbonyl-induced browning on α -crystallin chaperone-like activity: physiological significance and caveats of *in vitro* aggregation assays. *Biochem J* **379**, 273–282.
5. Kumar MS, Mrudula T, Mitra N, *et al.* (2004) Enhanced proteolytic degradation and altered ATP binding of methylglyoxal modified α -crystallin. *Exp Eye Res* **79**, 577–583.
6. Vlassara H (1996) Advanced glycation end products and atherosclerosis. *Ann Med* **28**, 419–426.
7. Shuvaev VV, Laffont I, Serot JM, *et al.* (2001) Increased protein glycation in cerebrospinal fluid of Alzheimer's disease. *Neurobiol Aging* **22**, 397–402.
8. Morena M, Cristol JP, Senecal L, *et al.* (2002) Oxidative stress in hemodialysis patients: is NADPH oxidase complex the culprit? *Kidney Int Suppl.*, **80**, 109–114.
9. Brownlee M (1995) Advanced protein glycosylation in diabetes and aging. *Annu Rev Med* **46**, 223–234.
10. Yan SD, Schmidt AM, Anderson GM, *et al.* (1994) Enhanced cellular oxidant stress by the interaction of advanced glycation end products with their receptors/binding proteins. *J Biol Chem* **269**, 9889–9897.
11. Mrudula T, Suryanarayana P, Srinivas PNBS, *et al.* (2007) Effect of curcumin on VEGF expression in diabetic retina. *Biochem Biophys Res Commun* **361**, 528–532.
12. Bengmark S (2007) Advanced glycation and lipoxidation end products – amplifiers of inflammation: the role of food. *JPEN J Parenter Enteral Nutr* **31**, 430–440.
13. Edelman D & Brownlee M (1992) Mechanistic studies of advanced glycosylation end product inhibition by aminoguanidine. *Diabetes* **41**, 26–29.
14. Freedman BI, Wuerth JP, Cartwright K, *et al.* (1999) Design and baseline characteristics for the Aminoguanidine Clinical Trial in Overt Type 2 Diabetic Nephropathy (ACTION II). *Control Clin Trials* **20**, 493–510.
15. Stitt A, Gardiner TA, Alderson NL, *et al.* (2002) The AGE inhibitor pyridoxamine inhibits development of retinopathy in experimental diabetes. *Diabetes* **51**, 2826–2832.
16. Vasan S, Zhang X, Zhang X, *et al.* (1996) An agent cleaving glucose-derived protein crosslinks *in vitro* and *in vivo*. *Nature* **382**, 275–278.
17. Swanson-Flatt SK, Flatt PR, Day C, *et al.* (1991) Traditional dietary adjuncts for the treatment of diabetes mellitus. *Proc Nutr Soc* **50**, 641–651.
18. Grover JK, Yadav S & Vats V (2002) Medicinal plants of India with anti diabetic potentials. *J Ethnopharmacol* **81**, 81–100.
19. Oubré AY, Carlson TJ, King SR, *et al.* (1997) From plant to patient; an ethnomedical approach to the identification of new drugs for the treatment of NIDDM. *Diabetologia* **40**, 614–617.
20. Bailey CJ & Day C (1989) Traditional plant medicines as treatments for diabetes. *Diabetes Care* **12**, 553–564.
21. Makita Z, Vlassara H, Cerami A, *et al.* (1992) Immunochemical detection of advanced glycosylation end products *in vivo*. *J Biol Chem* **267**, 5133–5138.
22. Kumar PA, Reddy PY, Srinivas PNBS, *et al.* (2008) Delay of diabetic cataract in rats by antiglycating potential of cumin through modulation of α -crystallin chaperone activity. *J Nutr Biochem* (epublication ahead of print version 10 September 2008).
23. Kumar PA, Kumar MS & Reddy GB (2007) Effect of glycation on α -crystallin structure and chaperone-like function. *Biochem J* **408**, 251–258.
24. Uchida K, Kanematsu M, Sakai K, *et al.* (1998) Protein-bound acrolein: potential markers for oxidative stress. *Proc Natl Acad Sci U S A* **95**, 4882–4887.
25. Gabir MM, Hanson RL & Dabelea D (2000) Plasma glucose and prediction of microvascular disease and mortality: evaluation of 1997 American Diabetes Association and 1999 World Health Organization criteria for diagnosis of diabetes. *Diabetes Care* **23**, 1113–1118.
26. Brownlee M (2001) Biochemistry and molecular cell biology of diabetic complications. *Nature* **414**, 813–820.
27. Mohan V, Sandeep S, Deepa R, *et al.* (2007) Epidemiology of type 2 diabetes. *Indian J Med Res* **125**, 217–230.
28. King H, Aubert RE & Herman WH (1998) Global burden of diabetes, 1995–2025: prevalence, numerical estimates, and projections. *Diabetes Care* **21**, 1414–1431.
29. Zimmet PZ (1999) Diabetes epidemiology as a tool to trigger diabetes research and care. *Diabetologia* **42**, 499–518.
30. Zimmet PZ (1999) Diabetes epidemiology as a tool to trigger diabetes research and care. Erratum. *Diabetologia* **42**, 1032.
31. Huebschmann AG, Regensteiner JG, Vlassara H, *et al.* (2006) Diabetes and advanced glycoxidation end products. *Diabetes Care* **29**, 1420–1432.
32. Strippoli GF, *et al.* Di Paolo S & Cincione R (2003) Clinical and therapeutic aspects of diabetic nephropathy. *J Nephrol* **16**, 487–499.
33. Ahmad MS & Ahmed N (2006) Antiglycation properties of aged garlic extract: possible role in prevention of diabetic complications. *J Nutr* **136**, Suppl. 3, 796S–799S.
34. Nakagawa T, Yokozawa T, Terasawa K, *et al.* (2002) Protective activity of green tea against free radical- and glucose-mediated protein damage. *J Agric Food Chem* **50**, 2418–2422.

35. Kiho T, Usui S, Hirano K, *et al.* (2002) Tomato paste fraction inhibiting the formation of advanced glycation end-products. *Biosci Biotechnol Biochem* **68**, 200–205.
36. Cai Y, Luo Q, Sun M, *et al.* (2004) Antioxidant activity and phenolic compounds of 112 traditional Chinese medicinal plants associated with anticancer. *Life Sci* **74**, 2157–2184.
37. Balasundram N, Sundram K & Samman S (2006) Phenolic compounds in plants and agri-industrial by-products: antioxidant activity, occurrence, and potential uses. *Food Chem* **99**, 191–203.
38. Saraswat M, Reddy PY, Suryanarayana P, *et al.* (2008) Inhibition of protein glycation by dietary agents: implications in the prevention of diabetic ocular complications. *Invest Ophthalmol Vis Sci* **49**, E-2287. Available at www.arvo.org
39. Suryanarayana P, Saraswat M, Mrudula T, *et al.* (2005) Curcumin and turmeric delay streptozotocin-induced diabetic cataract in rats. *Invest Ophthalmol Vis Sci* **46**, 2092–2099.
40. Suryanarayana P, Saraswat M, Petrash JM, *et al.* (2007) *Emblica officinalis* and its enriched tannoids delay streptozotocin-induced diabetic cataract in rats. *Mol Vision* **13**, 1291–1297.
41. Raskin P & Rosenstock J (1987) Aldose reductase inhibitors and diabetic complications. *Am J Med* **83**, 298–306.