
CRITICAL REVIEW

Neuropsychology and clinical neuroscience of persistent post-concussive syndrome

ERIN D. BIGLER

Departments of Psychology and Neuroscience, Brigham Young University, Provo, Utah and Department of Psychiatry and the Utah Brain Institute, University of Utah, Salt Lake City, Utah

(RECEIVED March 6, 2007; FINAL REVISION August 16, 2007; ACCEPTED August 16, 2007)

Abstract

On the mild end of the acquired brain injury spectrum, the terms concussion and mild traumatic brain injury (mTBI) have been used interchangeably, where persistent post-concussive syndrome (PPCS) has been a label given when symptoms persist for more than three months post-concussion. Whereas a brief history of concussion research is overviewed, the focus of this review is on the current status of PPCS as a clinical entity from the perspective of recent advances in the biomechanical modeling of concussion in human and animal studies, particularly directed at a better understanding of the neuropathology associated with concussion. These studies implicate common regions of injury, including the upper brainstem, base of the frontal lobe, hypothalamic-pituitary axis, medial temporal lobe, fornix, and corpus callosum. Limitations of current neuropsychological techniques for the clinical assessment of memory and executive function are explored and recommendations for improved research designs offered, that may enhance the study of long-term neuropsychological sequelae of concussion. (*JINS*, 2008, 14, 1–22.)

Keywords: Concussion, Mild TBI, Biomechanics, Neuroimaging, Neuropathology, Neuropsychology

INTRODUCTION: BRIEF HISTORY OF CONCUSSION

That concussion occurs and is commonplace is not in dispute. The United States Government's Center for Disease Control (CDC) estimates that there are more than one million concussions that occur annually in the United States, using their definitional statement of concussion being a condition "of temporarily altered mental status as a result of head trauma (www.cdc.gov, see Rutland-Brown et al., 2006)."

What is controversial is whether one fully recovers without symptoms from having sustained a concussion. Given the commonness of concussions along with the adaptive nature of brain function combined with neural plasticity (Duffau, 2006; Giza & Prins, 2006; Moucha & Kilgard, 2006; Priestley, 2007), it might be assumed that any transient impairment as a result of concussion would not result

in any neurological sequelae. Indeed, historically the original Latin term "commotio cerebri" was used to describe *concussion*, thought to occur because of "traceless disturbances" that produced momentary functional impairment without any damage to brain tissue (see reviews by McCrory & Berkovic, 2001; Vos et al., 2002). Hence, for decades, one of the venerable definitions in standard neurology textbooks, exemplified by the following quote from Grinker's Neurology was as follows: "the usual patient loses consciousness briefly, soon recovers and thereafter is without symptoms" (Vick, 1976; p. 651). In that concussion was thought to be mostly benign, the non-biological and psychodynamic theories that dominated the beginnings of clinical psychology and psychiatry minimized the effects head injury could have on behavior. This is captured by the 1947 quote by Page (1947) in an abnormal psychology textbook that "Head injuries and gunshot wounds involving damage to the brain occasionally produce mental disturbances, but such injuries are not an important cause of mental disease (p. 330)". Persistent maladaptive symptoms in this time frame were believed to be more an expression of a "neurosis" than anything possibly "organic." So,

Correspondence and reprint request to: Erin D. Bigler, Ph.D., Departments of Psychology and Neuroscience, 1190D SWKT, Brigham Young University, Provo, Utah 84602. E-mail: erin_bigler@byu.edu

“persistent” problems following concussion were interpreted within a psychogenic framework. In fact, one of the most cited publications in the clinical literature on concussion is that of Miller (1961) whose series of articles centered on the theme of concussion being nothing more than “Accident Neurosis”, which others have labeled as “Compensation Neurosis” (Levy, 1992) because of the prevalence of lawsuits involving mild head injury (Hall & Chapman, 2005; Mooney et al., 2005). No doubt “psychological” factors play an important role in the residuals from concussion (Meares et al., 2006; Whittaker et al., 2007; Wood, 2007), but they and other “functional” factors are also the source of intense debate and controversy over the existence of post-concussive symptomology (Cantu, 2007; Evans, 1994; King, 2003). These controversies will be discussed in greater detail later in this review.

Part of this controversy has to do with nomenclature and definition. Years ago, Vick (1976) also stated that terms like concussion are “. . . of little value” because of “such wide and indefinite connotations” (p. 650). Much has been written about the definition of concussion (Blostein & Jones, 2003; Boake et al., 2005; Ruff & Jurica, 1999), including the definitional statements by major organizations and consensus panels as presented in Table 1, wherein the terms concussion and mild traumatic brain injury (mTBI) are used interchangeably. For this review, in referring to studies, if the authors used the term concussion then that term will be used in referring to the study and likewise, if the term mTBI is used by the authors, that term will be used; otherwise, mTBI and concussion will be used interchangeably in the current review. However, this review focuses on the persistence of symptoms following concussion or what has been referred to as post-concussive syndrome (PCS), but this term then brings up additional controversies. In the majority of those concussed, symptoms abate within minutes to hours to days post-injury. Thus, some refer to PCS if the symptoms persist for more than a few days and in particular, if the symptoms persist for more than a week (Anderson et al., 2006; Sheedy et al., 2006). If the symptoms last more than 3 months then the term persistent post-concussive syndrome or PPCS has been used (Begaz et al., 2006; Chamelian et al., 2004; Iverson, 2006; Rees, 2003; Satz et al., 1999; Stalnacke et al., 2005; Willer & Leddy, 2006). Whereas there is a relationship between severity of concussion and who develops PPCS (Hessen et al., 2006), concussion severity by itself is a poor predictor of who develops PPCS (Guskiewicz et al., 2004).

DSM-IV lists PCS as a disorder under its “research” classification and some have referred to it as a syndrome (King, 2003; Rees, 2003; Ryan & Warden, 2003) and there are differences in symptom criteria between DSM-IV and the International Classification of Disorders (ICD-10) that further cloud this taxonomy issue (Kashluba et al., 2006; McCauley et al., 2005). Whether PCS is a disorder or syndrome is another ongoing debate (Hall & Chapman, 2005; Smith, 2006). Neither DSM-IV or ICD use the PPCS label. Nosological issues are not the focus of this review and there

are several excellent recent reviews on this topic ((Hall & Chapman, 2005; Silver et al., 2005; Smith, 2006; Zasler et al., 2007). Thus, for the current review PPCS is operationally defined as symptoms that persist beyond three months following a concussion (having met at least one of the definitions as listed in Table 1), implicating chronic sequelae.

As demonstrated by Table 1, there are many definitional statements about what constitutes a concussion or mTBI. Neuropsychological research on this topic would be aided to have a universally accepted definition as the standard (see Tagliaferri et al., 2006). Nonetheless, all definitions in Table 1 have general agreement that “mTBI is defined as the consequence of blunt (non-penetrating) impact with sudden acceleration, deceleration or rotation of the head with a Glasgow Coma Score (GCS) of 13–15 . . . (Vos et al., 2002, p. 207).” Thus, concussion occurs because of impact physical forces affecting the brain and if, physical forces are insufficient to injure the brain, no injury has occurred.

Regardless of the etiology, recovery from concussion is typically rapid and ostensibly complete in most individuals. Clearly, the best-controlled studies examining outcome following concussion, demonstrate good to complete recovery in the majority of individuals (Iverson et al., 2007). Additionally, at least with sports concussion, major consensus statements of the past five years have resulted in statements like “concussion typically results from the rapid onset of short lived impairment of neurological function that resolves spontaneously” and that “concussion may result in neuropathological changes but the clinical symptoms largely reflect a functional disturbance rather than structural injury” as reviewed by (Cantu, 2007, p. 963). So this review focuses on the *minority* of subjects who sustain a concussion, who remain symptomatic after three months. Large-scale studies demonstrate approximately 70% of all head injury cases seen in the emergency room (ER) are in the mTBI category (Udekwi et al., 2004). However, as pointed out by the CDC and other studies (Delaney et al., 2005), a substantial number of concussions is never evaluated in the ER, making it difficult to obtain precise numbers as to the true annual incidence rate. Bazarian et al. (2005) estimate that the annual mTBI incidence rate is 503.1/100,000, of which PPCS rates have been conservatively estimated at 10% (Ruff et al., 1996; Wood, 2004). Thus, despite the overall good to complete recovery rates from concussion, this remains a major public health concern (Langlois et al., 2005) and the field of neuropsychology should better understand the disorder (Kelly, 1999; Langlois et al., 2005).

From a neuropsychological standpoint, symptoms of impaired attention, memory, and executive function along with changes in emotional regulation dominate the clinical picture of PPCS (Lundin et al., 2006). An objective of this review is to understand these features in terms of a common pathological basis. To accomplish this, how evolutionary factors may have shaped recovery from concussion, followed by an up-to-date review of important new studies on the biomechanics of concussion and a thorough discussion

Table 1. The Multiple Definitions and Grading Systems of Concussion

Concussion Grading Systems				
Grade	Cantu	Colorado	Roberts	American Academy of Neurology
0			“Bell ringer”; no LOC; no PTA	
1	No LOC; PTA <30 min	No LOC; confusion without amnesia	No LOC; PTA <30 min	No LOC; transient confusion; concussion symptoms or mental status abnormality resolve in <15 min
2	LOC <5 min; PTA >30 min and <24h	No LOC; confusion with amnesia	LOC <5 min; PTA >30 min and <24h	No LOC; transient confusion; concussion symptoms or mental status abnormality last >15 min
3	LOC >5 min or PTA >24h	LOC	LOC >5 min or PTA >24h	Any LOC, either brief or prolonged

LOC = loss of consciousness; PTA = post-traumatic amnesia (from Leclerc et al., 2001)

2nd International Conference on Concussion in Sport, Prague 2004

“Sports concussion is defined as a complex pathophysiological process affecting the brain, induced by traumatic biomechanical forces. Several common features that incorporate clinical, pathological, and biomechanical injury constructs that may be used in defining the nature of a concussive head injury include the following:

- (1) “Concussion may be caused by a direct blow to the head, face, neck or elsewhere on the body with an ‘impulsive’ force transmitted to the head. (2) Concussion typically results in the rapid onset of short lived impairment of neurological function that resolves spontaneously. (3) Concussion may result in neuropathological changes, but the acute clinical symptoms largely reflect a functional disturbance rather than structural injury.(4) Concussion results in a grade set of clinical syndromes that may or may not involve loss of consciousness. Resolution of the clinical and cognitive symptoms typically follows a sequential course. (5) Concussion is typically associated with grossly normal structural neuroimaging studies. Two Classifications of Concussion: (1) *Simple Concussion*—In simple concussion, an athlete suffers an injury that progressively resolves without complication over 7–10 days.” (2) “*Complex Concussion*—Complex concussion encompasses cases where athletes suffer persistent symptoms (including persistent symptom recurrence with exertion), specific sequelae (such as concussive convulsions), prolonged loss of consciousness (more than one minute), or prolonged cognitive impairment after the injury” (p. 196–197) (McCrory et al., 2005)

European Federation of Neurological Societies—2002 Task Force

“mTBI is defined as the consequence of blunt (non-penetrating) impact with sudden acceleration, deceleration or rotation of the head with a GCS scores of 13–15 on admission to hospital (p. 209).

Mild	Category	GCS	Clinical Description	*Risk Factors
	0	15	No LOC, no PTA, = head injury, no TBI. No risk factors*	Unclear or ambiguous accident history, continued post-traumatic amnesia, retrograde amnesia longer than 30 min, skull fracture, severe headache, vomiting,
	1	15	LOC < 30 min, PTA < 1 hr No risk factors*	focal neurological deficit, seizure, age < 2 years,
	2	15	GCS = 15 + Risk factors present*	age > 60, coagulation disorders, high energy accident,
	3	13–14	LOC < 30 minutes, PTA < 1 hr. With or without risk factors present* (Vos et al., 2002)	intoxication with alcohol/drugs

American Congress of Rehab Medicine Definition

A patient with mild traumatic brain injury is a person who has had a traumatically induced physiological disruption of brain function as manifested by at least one of the following:

- (1) Any period of loss of consciousness;
- (2) Any loss of memory for events immediately before or after the accident;
- (3) Any alteration in mental state at the time of the accident (e.g. feeling dazed, disoriented or confused)
- (4) Focal neurological deficit(s), that may or may not be transient but where the severity of the injury does not exceed the following:
 - (A) loss of consciousness of approximately 30 minutes or less;
 - (B) after 30 minutes, an initial Glasgow Coma Scale (GCS) of 13–15; and
 - (C) post-traumatic amnesia (PTA) not greater than 24 hours. (American Congress of Rehabilitation Medicine Head Injury Interdisciplinary Special Interest Group, 1993)

The WHO Collaborating Centre Task Force on Mild Traumatic Brain Injury (mTBI)

“mTBI is an acute brain injury resulting from mechanical energy to the head from external physical forces. Operational criteria for clinical identification include: (i) 1 or more of the following: confusion or disorientation, loss of consciousness for 30 minutes or less, post-traumatic amnesia for less than 24 hours, and/or other transient neurological abnormalities such as focal signs, seizure, intracranial lesion not requiring surgery; (ii) Glasgow Coma Scale score of 13–15 after 30 minutes post-injury or later upon presentation for healthcare. These manifestations of mTBI must not be due to drugs, alcohol, medications, caused by other injuries or treatment for other injuries (e.g. systemic injuries, facial injuries or intubation), caused by other problems (e.g., psychological trauma, language barrier or coexisting medical conditions) or caused by penetrating craniocerebral injury, p. 115). (Carroll et al., 2004a)

of what is now currently known about the neuropathological and pathophysiological basis of concussion will be offered. The last part of the review will focus on more traditional neuropsychological concepts as they relate to concussion and conclude with suggestions on improved research tactics on this topic. There may be nothing more controversial in contemporary clinical neuropsychology, than the issues to be discussed in this review. At the outset, these controversies are acknowledged and the approach of this review is to first overview the contemporary neuroscience of concussion and deal with the most controversial issues at the end of the review.

EVOLUTIONARY ASPECTS OF INJURY

Undoubtedly concussions have been part of mammalian life since the beginning. The universality of concussions is that the stunned, motorically wobbly appearance commonly observed in an athlete, particularly a boxer who has been concussed, is replicated with animal models (Shaw, 2002). Survivability across mammalian species following concussion is testament to the fact that most concussions are but transient disruptions in normal brain function allowing the animal (including humans) to recover quickly and fully return to pre-injury abilities and activities. Because of the commonness of concussions, it is likely that genes that promoted certain brain morphologies and/or positive recovery characteristics have been passed down. However, concussions prior to the modern era would have occurred *only* from falls, falling or thrown objects, fisticuffs, combat, and the like. All of these remain major sources of concussions but with the modern era, concussions also occur from high-speed impacts that simply were never the source of injury in earlier times. So, whatever evolutionary advantages occurred they did so prior to the modern era. Likewise, genes selective for their ability to promote survivability of a brain injury were most likely *only* associated with simple concussion and not more severe brain injury, because prior to modern medical treatment the majority of moderate-to-severe injuries would not have been survivable or lead to disability that could not be sustained.

From a structural standpoint, the position of the irregular skull base to the dural surface of the frontal and temporal lobes, housed within the anterior and middle cranial fossa provides a means for holding the brain in position, in response to movement and/or mild trauma to the head (Bigler, 2007). Likewise, the position of the ventricles dissipates some of the strain effects with movement, including that of concussion (Ivarsson et al., 2002). Both of these have significant evolutionary advantage. It is also very likely that a selective bias occurred that favored rapid brain reparative mechanisms once a concussion occurred (Diaz-Arrastia & Baxter, 2006). In fact the most common of injuries for a particular organ system are the very ones most likely shaped by evolution (Martin & Leibovich, 2005). So key to recovery from concussion is a fast acting reparative system and this would emphasize a transient cellular response that

immediately re-establishes neural homeostasis. In addition to reparative metabolic and cellular responses, redundancy and back-up neural circuitry activated once a primary system were injured would be critical to recovery (Bach-y-Rita, 2004; Desmurget et al., 2007; Duff, 2001; Guigon et al., 2007; Kerckel et al., 2005). These redundant systems can either share in or take over function for injured neurons and networks. A neural systems reserve capacity probably directly relates to how rapid recovery from brain injury occurs, including concussion (Berker, 1996; Stern, 2007) and the role of genes in this recovery process is being examined (Alexander et al., 2007; McAllister et al., 2006)

One final evolutionary speculation will be made and that is based on the appearance and “design” of the fornix (see Fig. 1), the major white matter output from the hippocampus. At least half of the fornix is suspended beneath the corpus callosum and loosely connected with the septum pellucidum as it dives toward its connection with the mammillary body and septum (Andersen et al., 2006). One look at this delicate anatomical structure and it is obvious that it was not selected for its ability to withstand brain trauma. Evolutionarily, in lower mammals the fornix is clearly imbedded in brain parenchyma, but moving up the evolutionary tree with the expansion of the cerebral hemispheres, and the ventricular system, the fornix becomes more progressively suspended (see Crosby & Schnitzlein, 1982). The importance of the hippocampus and fornix in understanding mTBI is a major part of this review.

Physics of TBI

Given that concussions are so commonplace it *must* be easy to at least transiently impair the brain through mechanical deformation and there *must* be common neurological structures affected [see Figs. 1 and 2; (Ropper & Gorson, 2007)]. In a most innovative experiment by Bayly et al. (2005) human volunteers were studied using MRI to determine momentary brain parenchymal deformation when the head falls just 2 cm. MRIs of the brain were obtained before and immediately after the drop, comparing the degree of brain deformation or warping by measuring changes in fixed points between the two scans. These movements were far below the threshold for concussion and the authors liken this to the type of head (and brain) acceleration when jumping vertically a few inches and landing flat-footed. The authors estimated that it was 10% to 15% of the acceleration of “heading” a soccer ball. However, even with this mild impact the brain deforms. Bayley et al.’s conclusions were as follows: “When the skull decelerates, the brains center of mass continues to move, but the motion of the base of the brain appears constrained near the sellar and supra-sellar space. Tethering loads may be borne by the vascular; neural; and dural elements, which bind the brain to the base of the skull. Such anatomic structures might include the distal internal carotid arteries, the optic nerves, the olfactory tracts, the oculomotor nerves, and the pituitary stalk. All these structures pass through fixed bony or dural rings, which

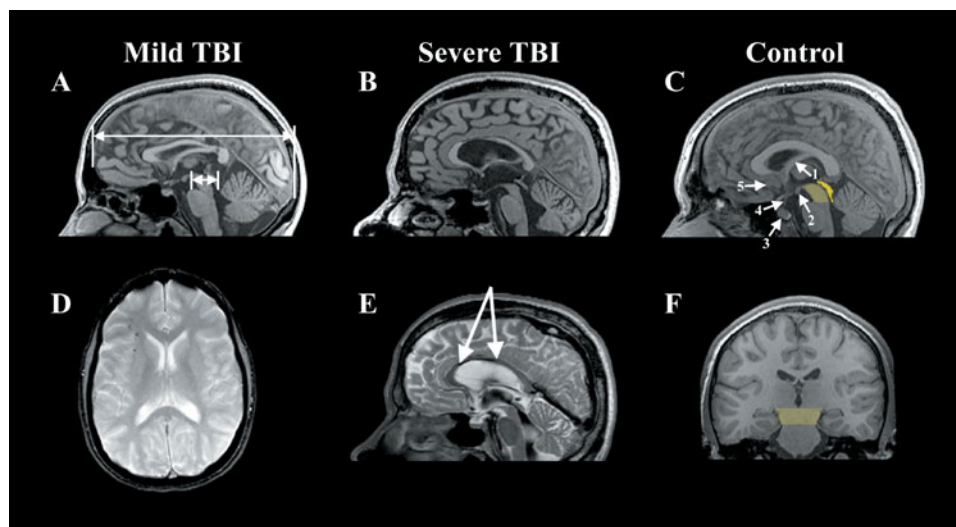


Fig. 1. The top row presents mid-sagittal T1 MRIs comparing the fornix and corpus callosum from a control (C) to that observed in mTBI (A) and severe TBI (B). The control figure is labeled where the following structures are identified: (1) fornix, (2) mammillary body (3) pituitary, where it is situated in the sella turcica, (4) hypophysis of pituitary stalk, and (5) region of the basal forebrain. The light yellow depicts the region of the tegmentum of the midbrain (shown in coronal view in F), whereas the darker yellow represents the tectal region of the midbrain. The coloration of the midbrain is also done to highlight the relative smallness of the midbrain compared to the size of the cerebrum, and how the cerebrum ‘rests’ atop the midbrain. As shown in (A) from the patient with mTBI, the length of the cerebrum (long arrow) is approximately 10 times the length of the midbrain (short arrow). (D) depicts an axial gradient recall echo (GRE) depicting multiple deposits (black dots) of hemosiderin in the frontal region, implicating shear injury, note how they are mostly located at the gray-white matter junction. This patient had sustained an mTBI in a MVA. Note that there is thinning of the corpus callosum and a shear lesion in the isthmus region. (E) is a T2 mid-sagittal MRI depicting extensive hemosiderin deposition along the body of the corpus callosum (arrows) and also note the generalized atrophy of all structures in the severe TBI case compared to the mTBI and control.

restrict their movement. These features attach to or penetrate the more mobile brain parenchyma. As a result, the brain begins to rotate about this region, while material anterior is compressed and material posterior is stretched by initial effects. As the brain rotates backward and upward relative to the skull, the superior-frontal surface of the brain appears to compress against the top of the cranial vault. Normal forces, tangential forces, and possibly tension in the bridging veins on the superior surface of the brain eventually arrest the rotation of the brain in front of the superior contact region is compressed and pushed forward. Behind the superior points of contact, the brain is elongated as the brain's inertia pulls it backward and clockwise. Finally, behind the basal tethering region, material in the brainstem experiences shortening and shear as the posterior and inferior parts of the brain continue rotating downward and forward (p. 852).” Bayly et al. (2006) have also performed this type of modeling on the rat pup brain with similar findings of significant transient mechanical deformation of the brain.

Viano et al. (2005b) used a different approach by simulating movement within the cranium by a “finite element analysis using a detailed anatomic model of the brain and head accelerations from laboratory reconstructions of game impacts (p. 891)” based on National Football League (NFL)

players who experienced on the field concussions that were videotaped. The exceptional innovativeness of this study was the ability to model the brain, including white and gray matter, the ventricular system, meninges, and in particular the falx cerebri and tentorium cerebelli along with the skull (most of these anatomical regions are shown in Figs. 1 and 2). In a number of those concussed, the initial strain occurred in the temporal lobe adjacent to the impact and then migrated through the temporal lobe to other brain regions. This is depicted in Figure 3. In *all* subjects concussed the largest strains that occurred in the migration of the brain deformation occurred in the fornix, midbrain and corpus callosum. Dizziness correlated with early strain in the orbital-frontal cortex and temporal lobe.

The Viano et al. (2005b) modeling study found, in general, excursions of the concussed brain to be between 3–6 mm at 24–26 ms post-impact. Of particular importance to neuropsychology is that this modeling shows 4–5 mm displacements of the hippocampus, caudate, amygdala, anterior commissure, and midbrain (again refer to Fig. 2). In addition to these brain regions showing significant displacement, they also related to various cognitive and physical symptoms from concussion in this group of NFL players. Also, increased strain at the level of the hypothalamus was associated with at least transient cranial nerve symptoms.

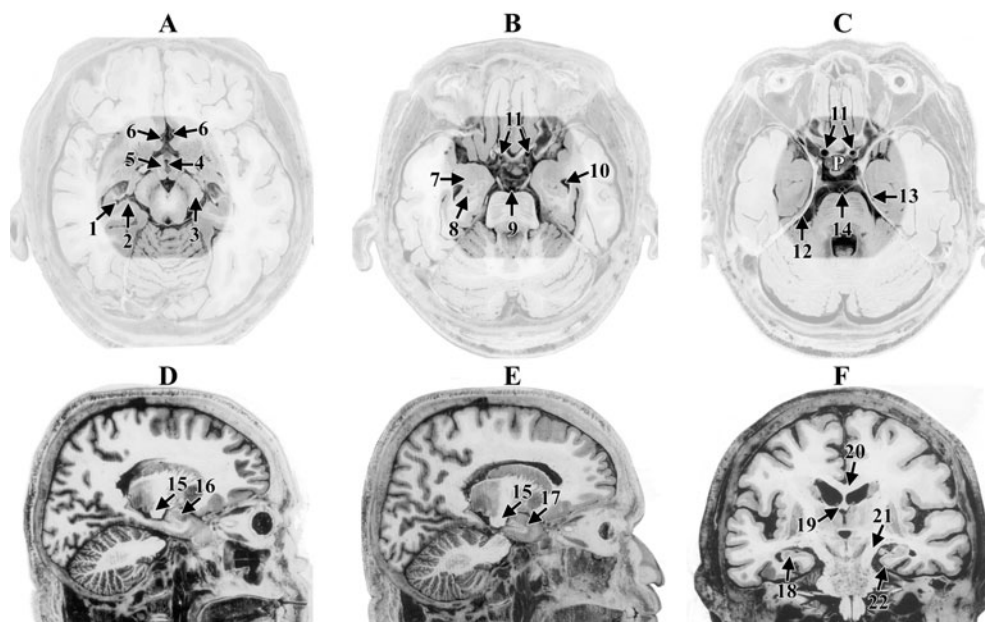


Fig. 2. All views are post-mortem, adapted from Mai et al. (2004) (and used with permission from Elsevier). A, B, and C represent axial views where the highlighted area represents some of the common regions where the greatest strain effects were demonstrated in the Bayly et al. (2005) and Viano et al. (2005b) studies. (A) 1—hippocampus, 2—subiculum, 3—cerebral peduncle, 4—III ventricle, 5—hypothalamus, 6—anterior cerebral artery, (B) 7—amygdala, 8—hippocampus, 9—basilar artery, 10—temporal horn of the lateral ventricle, 11—internal carotid arteries, (C) 12—free-edge of the tentorium, 13—entorhinal cortex, 14—basilar artery, P = pituitary in the position of the sella turcica. D and E are sagittal views: 15—cerebral peduncle, 16—amygdala, 17 temporal pole and F is a coronal view: 18—hippocampus, 19—fornix, 20—corpus callosum, (21) cerebral peduncle, and 22—entorhinal cortex adjacent to the free-edge of the tentorium. Note the closeness of all of these regions and any movement, lifting or twisting of the brain at its base would simultaneously affect all of these structures.

The models described earlier occur in well-controlled experimental conditions. Obviously, high speed impact head injuries are not a controlled experiment and likely involve more significant pressure and shear-strain forces than what are seen in sports concussion (Bradshaw et al., 2001; Zhang et al., 2006a). Regardless of these factors, the same brain regions as described earlier and as shown in Figures 1 and 2 are likely involved in all concussions, just a matter of degree. Similarly, much of the cognitive and neurobehavioral symptoms of concussion can be explained by the involvement of the brain regions highlighted in Figures 1 and 2. In these Figures, note the proximity of the medial temporal lobe to the midbrain, the fact that the free-edge of the tentorium makes contact with the medial temporal lobe and midbrain as well as the nearness of the basal forebrain to these regions along with the hypothalamus, hypophysis and pituitary stalk, and the arterial vasculature. So, within a few centimeters are critical brain structures that, if affected, could represent the structural basis to many symptoms associated with concussion.

Pathophysiology of Concussion

Iverson (2005) and Hovda (2004) provide an excellent and detailed reviews of the pathophysiology of concussion, which

need not be re-elaborated here. Whereas initiated by immediate biomechanical forces, as describe above, much of the pathology of acute concussion is believed to be transient biochemical induced neurotransmitter disruptions initiated within 25–50 msec of impact. Tensile forces also disrupt the cytoskeletal status of the axon and its ability to function, including disrupted axonal permeability and transport (Povlishock & Katz, 2005). Disrupted cytoskeletal architecture, renders cells less functional and may have widespread effects on the injured brain (Hall et al., 2005), albeit transient in concussion.

Since the Iverson (2005) and Hovda (2004) publications there are several important studies that add to our understanding of the potential microscopic pathology that can occur from concussion. Zetterberg et al. (2006) examined cerebrospinal fluid (CSF) taken by from lumbar puncture in 14 amateur boxers 7 to 10 days and 3 months after a bout compared to matched controls without any contact. They used several markers of neuronal and astroglial injury that can be readily detected in the CSF, finding significant indicators of neuronal injury byproducts in CSF that were positively related to the actual number of hits during a bout, most apparent in the initial samples taken after the amateur boxing contest. None of the boxers received a knock-out punch and likely did not meet any of the behavioral criteria

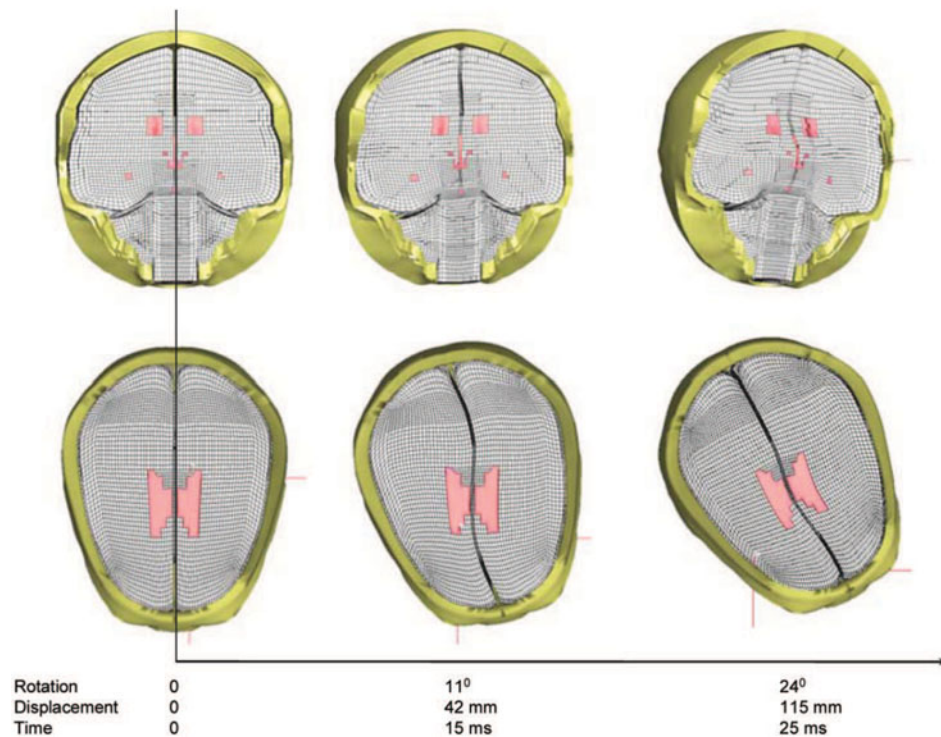


Fig. 3. From Viano et al. (2005b) published with permission from Lippincott Williams & Wilkins. The model on the left represents a coronal (top) and axial (bottom) view of the tagged brain model with the ventricle in pink and the skull encasing in yellow. The left hand column represents the baseline, where no movement occurred; notice the midline is vertical in the coronal plane and straight in the axial plane. Time in msec is shown on the x-axis. By 25 msec the model indicates that this player's brain had a maximal shift, where it is evident that there is particular distortion in the medial temporal and hypothalamic region. This was from a player concussed on a kick return who had brief LOC, and PCS symptoms of headache, fatigue, dizziness, and photophobia and sleep disorder as physical symptoms. Note that the modeling of this subjects brain would involve all of the structures identified in Figure 1, and indeed, the high strain findings modeled in this subject supported such a locus of injury (see Appendix 1B of the Viano et al., 2005b paper that detail individual characteristics of the subjects).

for concussion. This study confirms the presence of acute pathological changes in the brain that can occur from boxing, in blows to the head that are below the threshold for producing what behaviorally would be classified as a concussion in these conditioned athletes.

Using a different approach, Zhang et al. (2006b) examined conventional MRI along with diffusion tensor imaging (DTI) in a group of professional boxers. While the majority had normal clinical imaging, 7 of the 42 examined had abnormal white matter findings, which should not be evident in an otherwise young, healthy subjects (Hopkins et al., 2006). More importantly, even those without clinical abnormalities as a group exhibited DTI differences from their matched controls, suggesting subtle white matter abnormalities, particularly at the level of the corpus callosum. Recall that Viano et al. (2005b) showed that the corpus callosum was one of the brain regions receiving the biggest strain effect in concussion. Similarly, Chappell et al. (2006) using DTI methods demonstrated similar white matter pathology in a group of 81 professional boxers. These studies focused on professional boxers without known neurological impairment, otherwise they would not be boxing, and show that

sensitive MRI methods do detect with a higher frequency abnormalities of white matter. Along these lines Cohen et al. (2007) have shown MR spectroscopic and subtle brain volume loss in mild TBI. Such imaging findings demonstrate that pathological changes in brain parenchyma can be detected in mild TBI using contemporary neuroimaging methods.

Bigler (2004) demonstrated hemosiderin and residual inflammatory reaction in the post-mortem brain of an individual with PPCS, where the autopsy was performed seven months post-injury. Similar findings were observed in a post-mortem of a professional football player who had developed cognitive decline later in life (Omalu et al., 2005). Combining the imaging and neuronal injury biomarker studies discussed earlier, with the Bigler (2004) and Omalu et al. (2005) post-mortem studies provide indisputable evidence that structural pathology can be present in mTBI. Additionally, these type of hemorrhagic lesions can be observed with specialized high-field MRI studies (see Ashwal et al., 2006; Scheid et al., 2006) as shown in Figure 4. As such, some aspects of the so-called "traceless injury" of concussion are being revealed with newer techniques.

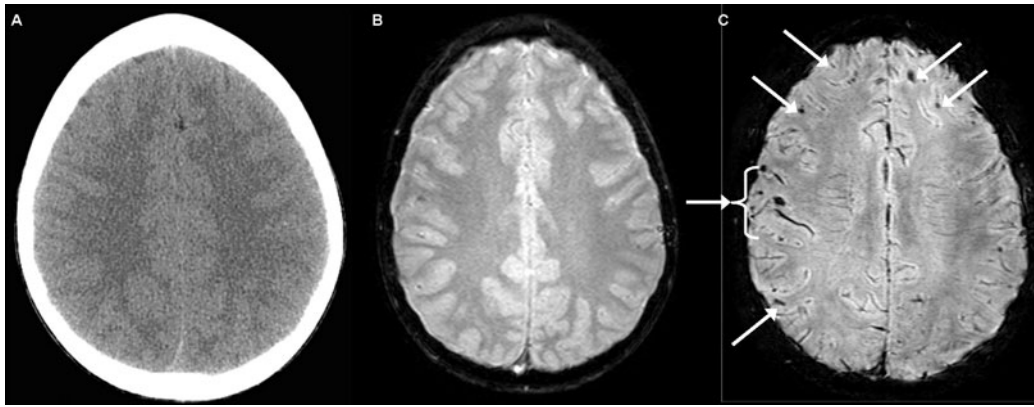


Fig. 4. This 12 year-old male had sustained a concussion in a skate-boarding accident. Eyewitness accounts estimate LOC to be approximately 7 minutes, but in the ER the patient was alert and not amnesic. However, because of the positive LOC a CT scan was performed (A), followed by the more routine GRE sequence (B) which revealed only a hint of hemosiderin deposition, however, the susceptibility-weighted sequence (C) clearly demonstrated multiple foci of hemosiderin deposition (see arrows). (Reproduced by permission from Jill Hunter, M.D., Texas Children's Hospital, Houston, Texas).

What is the significance of these pathological residua in those concussed, even when ostensibly reparative and restorative mechanisms return function to apparent baseline? Are there still potential sequelae that can be elicited and are these expressed overtime? Do these lesions relate to neuropsychological function? What Gronwall and Wrightson (1975) demonstrated years ago suggested that concussion may not be as benign as Miller (1961) had implied, but may be very dependent on the cognitive demands placed on a patient. Routine cognitive tasks may be unaffected, whereas more complex functions affected. This has been revisited more recently by Chen et al. (2003) using functional brain imaging in a small group of subjects ($N = 5$) who had sustained concussion, only two of whom had brief LOC (less than 2 minutes). In this study the concussed patients, none of whom were in litigation, all had neurobehavioral symptoms of PPCS, but their resting PET metabolism did not differ from controls. However, when given a spatial working memory task to perform, differences in regional cerebral blood flow were detected in prefrontal cortex in PPCS subjects. In other words, unless a significant cognitive demand was placed on the subject that required more than typical cognitive effort, no differences could be determined. Similarly, Bernstein (2002) demonstrated that by increasing the complexity of a dual task involving auditory and visual discrimination and measuring evoked responses that those with a history of concussion but ostensibly no residual complaints could be differentiated from controls (Dockree et al., 2006a).

Moreover, confirmation of the likely residual pathology from concussion is clearly demonstrated in the second-injury circumstance, where a prior concussion increases the likelihood of a second concussion and greater morbidity of the second concussion in both human and animal studies (Huh et al., 2007; Longhi et al., 2005; Manville et al., 2007; Moser et al., 2005; Omalu et al., 2005; Pellman et al., 2004;

Wall et al., 2006). The most straight forward explanation of the pathology of the second injury concussion is that the first concussion is simply not benign, but that the brain adapts quickly to the injury in most cases. It should be noted that there is some controversy over the second injury hypothesis (Iverson et al., 2006b; Schnadower et al., 2007) and much more animal and human research is needed to fully understand this phenomena (Laurer et al., 2001). From a clinical management standpoint, repeated concussions are the basis for recommendations to retire from sports (Cantu, 2003) and reported to be related to the presence of neuropsychiatric symptoms in professional North American Football players (Guskiewicz et al., 2007).

While petechial hemorrhage associated with concussion has been well documented neuropathologically for decades (Ashwal et al., 2006), the shearing phenomena may only be part of the pathological story of vascular injury in concussion. A most intriguing animal study by Ueda et al. (2006), inducing what would be at least a moderate brain injury, has shown that the perivascular nerve network is injured in TBI as well. It is often overlooked that there is a neural regulation of blood vessels and blood vessels can contract and expand under neurogenic control. In fact, it is the dispersion of blood in response to autoregulation and localized activation that is at the basis of functional neuroimaging. If a blood vessel has a subtle abnormality in its ability to regulate regional flow, this may contribute to the neuropsychological sequelae expressed in a concussed individual. This remains to be investigated and represents speculation at this time. Thus, in TBI the same mechanisms that stretch the neuron can stretch the blood vessel and this may impair the neurogenic response of the blood vessel. Thus, the functional neuroimaging findings in concussion may not just be a consequence of brain parenchymal injury, but vascular and blood-brain barrier disruptions (Korn et al., 2005).

Along these same lines, is how the peri-vascular spaces that house cerebral vasculature are affected by injury, because much of the surrounding tissue is white matter. Numerous studies have shown the vulnerability of white matter damage in TBI (de la Plata et al., 2007; Inglese et al., 2005a; MacKenzie et al., 2002) have all shown that in mTBI increased frequency of dilated perivascular spaces, changes in white matter volumetry and chemical composition occur and relate to persistence of symptoms. Significant inflammatory reactions and hemosiderin deposits occur in the peri-vascular space in response to injury and their presence is considered a marker of white matter injury (Beschorner et al., 2002; Konsman et al., 2007). What is potentially so important about these observations is that inflammatory reactions that may originally injure white matter parenchyma, at least experimentally, have been shown to disrupt dopaminergic function (Roy et al., 2007), which heuristically, could be the basis for some of the neuropsychiatric symptoms associated with damage to white matter.

Another neuropathological complexity that is only beginning to be understood is the individual differences and heterogeneity of injury to individual cells (Buki & Povlishock, 2006; Reeves et al., 2005; Singleton & Povlishock, 2004). This too may be under genetic control where individual differences to injury susceptibility relates to outcome. It just may be that certain neurons are more susceptible to injury and certain injury forces or dynamics than others (Park et al., 2006).

There are other biomarkers of injury that have also been examined in human mTBI. For example, Stalnacke et al. (2005), using a blood biomarker of brain injury, serum concentrations of S-100B and neuron-specific enolase, found that S-100B levels during the acute phase of mTBI related to long-term sequelae. S-100B findings have not been universal in mTBI (see also Bazarian et al., 2006a; Bazarian et al., 2006b; De Kruijk et al., 2002; Savola & Hillbom, 2003) and these observations are but some of the first. The level of initial CSF tau, a microtubular binding protein, believed to be a marker of axonal injury, correlates with outcome in severe TBI (Ost et al., 2006), but it has not been systematically studied in mTBI.

Functional Neuroanatomy of Concussion and PPCS

In concussion, regardless of the definitional criteria used as outlined in Table 1 and the variability in clinical presentation, it is clear that 4 features dominate concussive symptoms—(1) brief alteration in consciousness or neurological function with at least acute changes in mentation and speed of processing; (2) physical symptoms of headache, dizziness and/or vertigo along with increased fatigability; (3) impairments in short-term memory, attention and concentration (particularly for multi-tasking); and (4) increased likelihood for changes in mood and emotional function. Where and how can these symptoms be integrated in understanding the functional neuroanatomy of

concussion? The assumption is that there must be a common origin to these symptoms.

Figure 1 is a sagittal MRI view of the brain. The average adult brain weighs somewhere between 1150 and 1450 grams (2.5–3 pounds), with most of that weight located in the cerebrum, above the cerebellum in the figure. The anterior aspect of midbrain region of the upper brainstem is comprised of the cerebral peduncles which house all of the major ascending and descending white matter pathways connecting the cerebrum with the periphery of the body and the connections between the cerebrum and the cerebellum. In an earlier review, these anatomic regions, pathway and structures have been outlined in detail (Bigler, 2007). As can be clearly visualized in the Figure 1, the midbrain at the level of the cerebral peduncle is small, opposed to frontal-occipital linear dimension, and in the vertical position the tegmental aspect of the upper midbrain “rests” on or is adjacent to the dorsum sellae and the anterior clinoid, partially shown in Figures 1 and 2. Just in front of the tectum is the hypophyseal fossa that house the infundibulum (or pituitary stalk), the neural connection between the ventral hypothalamus and the pituitary, situated in the sella turcica. Immediately lateral to the cerebral peduncle is the carotid groove of the sphenoid bone wherein the internal carotid artery ascends into the brain to form the anterior and medial cerebral arteries. Next, moving laterally just past the carotid groove is the inner edge of the greater wing of the sphenoid and the beginning medial surface of the temporal lobe (see Fig. 2). The entrance of internal carotid into the cranium through the carotid canal occurs just adjacent to the midbrain. What is particularly interesting about this region of the brain is that the tentorium cerebelli extends from a covering of the cerebellum to attach at the junction of the clinoid and lesser wing of the sphenoid. As the tentorium projects to its clinoid-lesser wing of the sphenoid connection, the lateral surface of the upper brainstem touches the “free edge” of the tentorium cerebelli, and just on the other side of the tentorium at this level is the medial surface of the temporal lobe, where the perirhinal and entorhinal surfaces also touch the “free edge” of the tentorium (Bigler, 2007; Van Hoesen et al., 1999). What is also of particular interest with regards to consciousness is that arterial branches of the posterior circulation of the brain actually cross the free edge of the tentorium and these arterial branches supply blood to the brainstem (Blinkov et al., 1992).

Biomechanics of concussion inform us that concussions are more likely to occur if there is some rotational force present (Fijalkowski et al., 2006; Viano et al., 2005a; Vorst et al., 2007). Returning to this midbrain region of the brain, if there is any stretching and/or rotational force at this level, note what occurs: the upper brainstem stretches across the clinoid and lesser wing of the sphenoid, with its lateral margins potentially striking the free-edge of the tentorium, the pituitary stalk stretches disrupting hypothalamic-pituitary connections, the internal carotid stretches against the carotid canal and posterior circulation to the brainstem is also dis-

rupted, the medial temporal lobe strikes the lateral surface of the free-edge of the tentorium as well as the medial wall of the sphenoid. Just in from this medial surface of the temporal lobe are the amygdala and hippocampus, with the hippocampus giving rise to the fornix that not only connects with the anterior thalamus *via* the mammillary body but also to the septum and pituitary (McDonald et al., 2006). Just anterior to the hypophysis-hypothalamic region is the basal forebrain; just posterior are the mammillary bodies. So at one level, if there is slight mechanical deformation either in terms of compression or uplift and particularly if rotation occurs, there are putative functional neuroanatomical connections disrupted for consciousness (upper brainstem, reticular activating system), memory (mechanical compression of perirhinal and entorhinal cortices disrupting input to the hippocampus or hippocampal output *via* the fornix and its connection with the anterior thalamus and cingulate), emotional regulation (medial temporal lobe and basal forebrain), post-traumatic migraine (stretching the internal carotid and all vasculature that forms the circle of Willis as well as stretching/irritation of the dura and other vessels) and fatigue as well as hormonal changes secondary to hypothalamic-pituitary disruption.

Indisputably, clearly demonstrated immediately after concussion (Barrow et al., 2006a; Barrow et al., 2006b), even in those who go on to fully recover, is slow speed of processing (Crawford et al., 2007; De Monte et al., 2005). Speed of processing is dependent on the integrity of white matter pathways maintaining their optimal inter-connectiveness. Returning to the biomechanical deformation effects reviewed above, long-coursing axons are going to be more vulnerable, particularly interhemispheric connections, especially the corpus callosum and anterior commissure (Cecil et al., 1998; Holshouser et al., 2006; Inglese et al., 2005b; Mathias et al., 2004; Wilde et al., 2006a; Wilde et al., 2006c). Thus, neuropsychological tasks that require interhemispheric integration and/or multiple intracortical connections often show differences in the form of slowed responding, even in those with mTBI (Mathias et al., 2004)

So, the hypothesis put forth in this section is that the biomechanics of brain injury simultaneously disrupt neurological function in the upper brainstem, pituitary-hypothalamic axis, medial temporal lobe, and basal forebrain concomitant with irritative injury to the vasculature and meninges, which gives rise to the symptoms observed in the post-concussive state and the neuropsychological sequela associated with such an injury. How rapidly these neural, dural, and vascular areas return to homeostasis or recovery from some adaptive mechanism or do not recover, provides the biological basis for the symptoms expressed.

Animal Models of Concussion

The advantage of animal models is the controlled environment where the reproducibility of an adverse effect can be tested, in this case a concussive brain injury. There have been numerous animal models of brain injury over the years

(Leker et al., 2002), but most focused on what would be moderate-to-severe brain injury with focal cortical impact, producing not only focal brain injury but diffuse injury readily demonstrated by histological analysis. It has been challenging to develop an animal model of concussion that mimics human concussion, because of a host of differences associated with brain morphology, skull-brain interface, and species differences (Leker et al., 2002).

Nonetheless, several excellent animal models of concussive injury have recently been established (Gurkoff et al., 2006; Henninger et al., 2005; Milman et al., 2005; Tang et al., 1997; Tashlykov et al., 2007; Ucar et al., 2006; Yoshiyama et al., 2005; Zohar et al., 2003, 2006). For example, Henninger et al. (2005) modifying methods of Tang et al. (1997) have used a weight drop device to the exposed skull that replicates human concussion. As stated by these researchers, “immediately after impact, *all* TBI animals lost their muscle tone and righting reflex response (p. 450)” but it shortly returned. This is analogous to what is observed acutely in sports concussion (McCrory & Berkovic, 2000). After reflex recovery the concussed rats behaved “normally” in comparison to sham controls. In this study, memory was assessed using the Morris Water Maze (MWM), where the concussed animals also showed no differences from controls in ability to swim and other species typical behaviors. Thus, in terms of ordinary rat behavior, function returned without discernable abnormality following concussion. However, given time to heal from the minor surgery to expose the skull, the concussed animals exhibited memory deficits on the MWM when assessed nine days post-injury. This study also included high-field MRI which was negative. However, histology demonstrated several pathological changes including a reduction in the number of cortical neurons as well as in the hippocampus. A limitation of this study is that it only examined memory nine days post-injury but Milman et al. (2005) and Zohar et al. (2003, 2006) using somewhat similar methods, but in mice, have demonstrated these type of persistent cognitive differences in concussed animals for longer periods of time post-injury. Gurkoff et al. (2006) have demonstrated this in rats with a fluid percussion injury model and Tashlykov et al. (2007) have shown apoptotic changes in cerebral cortex and hippocampus using this weight drop technique as well.

So animal models of concussion do support the notion that persistent cognitive deficits can occur, although not all studies have found lasting effects (Gaetz, 2004; Leker et al., 2002). The difference between those studies that find persisting symptoms and those that do not is probably the severity of the concussion. For example, in the Tashlykov et al. (2007) study pellets of incremental weight from five to 30 g were dropped on the head of mice under light ether anesthesia. Of particular interest in this study is that *none* of the weight amounts produced any discernable change in the species typical behavior of the mice once recovered from the ether anesthesia, yet related to the weight amount of the pellet pathological changes were proportional to the impact. The 5 g weight drop was insufficient to produce any detect-

able pathological changes. A minimum of 10 g was necessary for showing pathological neuronal changes, but 15 g was necessary to initiate apoptotic changes. Thus, the threshold to produce injury varies depending on what pathological changes are under investigation and whether a certain injury threshold has been reached.

IS BRAIN INJURY ON A CONTINUUM: CONCUSSION → SEVERE TBI?

In examining the post-mortem brain of several human subjects who had sustained a “mild concussion,” but died for reasons other than the head injury, Blumbergs et al. (1994) demonstrated presence of axonal injury, particularly in the fornix. Blumbergs et al. (1995) in a follow-up study demonstrated that the microscopic pathology was on a continuum from mild (GCS of 13–15) to severe (GCS of 3–8), again demonstrating the susceptibility of the fornix. As shown by Viano et al. (2005b), the fornix is distinctly vulnerable to the stress/strain effects of concussion and is a common area of damage in moderate-to-severe TBI, as visualized using MRI (Gale et al., 1995; Tate & Bigler, 2000; Tomaiuolo et al., 2004), where the degree of atrophy is related to severity of injury (Bigler et al., 2006; Tate & Bigler, 2000; Tomaiuolo et al., 2004; Wilde et al., 2006b). Because the fornix is a white matter structure containing projecting axons from the hippocampus, disruption in fornix integrity likely relates to the concussive effects of disrupted short-term memory, at least transiently.

At the histopathological level, severity can be graded by the degree of cell loss, cytoskeletal changes, presence of inflammatory cellular reaction, biochemical markers of cell damage or death, etc. and all seem to relate to severity on some continuum (Anderson et al., 2003; Vorst et al., 2007). Taken together, in well controlled animal models there is a continuum associated with severity of impact injury supporting the contention that injury is on a continuum (Gurkoff et al., 2006; Igarashi et al., 2007; Kharatishvili et al., 2006; Maegele et al., 2005; Ucar et al., 2006). Understanding this continuum means that at the mildest level of brain perturbation there may, in fact, be no lasting effect. However, once a threshold is reached, lasting sequelae begin to occur (Zhu et al., 2006).

Human neuroimaging studies also support the concept of continuum of injury. For example, a linear relationship with cerebral atrophy relates to injury severity measures such as GCS, PTA, and duration of LOC (Bigler et al., 2006; Wilde et al., 2006b). Likewise, complicated mTBI is more likely to have positive neuroimaging findings (Levine et al., 2006; McAllister et al., 2001; Vorst et al., 2007) and significant residuals (Kennedy et al., 2006). If boxing is considered a model for detecting “pre-clinical” or asymptomatic brain injury, recent diffusion tensor imaging studies have demonstrated abnormalities in boxers (Chappell et al., 2006; Zhang et al., 2006b). Thus, animal and human studies support the contention of injury on a continuum, implicating that understanding the variables that relate to severity of injury are

likely very important in understanding neuropsychological sequelae (see Wilde et al., in press; Lewine et al., 2007).

VULNERABILITY OF THE MEDIAL TEMPORAL LOBE AND IN PARTICULAR, THE HIPPOCAMPUS

Elsewhere, I have reviewed research demonstrating that the brain-skull interface in the anterior and middle cranial fossa is a major factor for the vulnerability of these regions in TBI (Bigler, 2007). Potentially the most critical structure injured for neuropsychological sequelae in TBI is the hippocampus and its afferent and efferent connections (Wilde et al., 2007). The Viano et al. (2005b) study demonstrated that the typical deformation of the hippocampus to be 4–6 mm in concussion associated with professional football. Numerous human and animal studies have demonstrated the vulnerability of the hippocampus (and fornix) to injury in TBI (Bigler et al., 2006; Geddes et al., 2003; Royo et al., 2006; Tashlykov et al., 2007; Tasker et al., 2005; Wilde et al., 2006b) and functional neuroimaging studies using SPECT also demonstrate medial temporal lobe hypoperfusion in mTBI (Gowda et al., 2006). Thus, given the location of the hippocampus in the medial temporal lobe and its connection and location to the fornix, these brain regions are key to understanding PPCS neuropsychology, and should be the focus of intense neuropsychological investigation.

LIMITATIONS OF NEUROPSYCHOLOGICAL RESEARCH TO ADVANCE THE FIELD

The Litigation Conundrum: Forensic Implications for Clinical Neuropsychology

From the anatomical and pathophysiological discussions earlier, it is plainly evident that the brain is at least momentarily and transiently injured in concussion but for the majority of those injured persistent sequelae do not occur. Because animal models have demonstrated that lasting negative effects can occur with concussion (see Tashlykov et al., 2007), it is reasonable to assume that PPCS will exist in some individuals. It is in these individuals that neuropsychological research needs to direct its best and most unbiased research efforts. Unfortunately, as pointed out by the World Health Organization’s task force on mTBI, poor research designs and the cross-sectional nature of many of the studies on this topic, restrict generalizations of the findings (Carroll et al., 2004a; Carroll et al., 2004b). What can be done to correct short-comings of research in this area?

More than 40 years after Miller (1961) wrote about concussion and “compensation neurosis”. Kertesz and Gold (2003), reviewing outcome from concussion make the following statement: “the involvement of insurance claims, litigation, and the expense of rehabilitation makes this area very contentious (p. 629).” Belanger et al. (2005) per-

formed a meta-analysis of 39 studies involving 1463 cases of mTBI assessing clinical neuropsychological test findings. Their findings were similar to what has also been described by Binder et al. (1997), Frencham et al. (2005), and Schretlen & Shapiro (2003), implicating short-term, but not necessarily long-term neuropsychological effects, except for those cases who were in litigation, where either “stable or worsening of cognitive functioning over time (p. 215) was observed.” Mooney et al. (2005), in a university based rehabilitation service, examined those with “disappointing recoveries” and observed that “in cases of poor recovery after mTBI where compensation or litigation may be a factor, most of the variance in recovery seems to be explained by depression, pain, and symptom invalidity (p. 975).” With regards to symptom invalidity, Loring et al. (2007) reported 20% of subjects including those with history of head injury who were evaluated in a University-based clinical assessment laboratory but who were also in litigation did not pass symptom validity testing (SVT). Plainly, presence of litigation is a major confound in research in mTBI and its presence in research studies has likely obscured the true effects of concussion, including PPCS. Also, whenever analyzing group data, if all subjects with concussion are examined at a particular time period, the effects on individual subjects who may be symptomatic get washed out by the total group effects (Iverson et al., 2006a; Kent, 2007; McHugh et al., 2006; Sterr et al., 2006). This is a very important point, because few studies compare symptomatic *versus* non-symptomatic subjects who have been concussed and those who do, find those who are symptomatic to have greater neuropsychological impairment (Collie et al., 2006; Iverson et al., 2004; Sterr et al., 2006).

The fact that the litigation process is adversarial and that neuropsychological testimony occurs on both sides of the legal argument, raises the specter of potential bias in what has been written about PPCS depending on the type of forensic work an author may participate in. If one is exclusively retained in legal settings for one side or the other in a legal matter, that could have a bearing on what is studied and reported (Racette et al., 2006). The legal side that retains a clinician or researcher may influence directly or indirectly what is published by that individual (Bigler, 2006). For example, it would be difficult for the individual in private practice whose sole income is derived from their forensic work and consistently retained by the defense to publish on the subtle sequelae of PPCS, including its lasting and enduring adverse effects. Oppositely, but just as likely, the clinician who is exclusively retained by the plaintiff’s side is unlikely to publish on the “myth” of PPCS.

Neuropsychological research from countries that do not have the kind of litigation and medical care system that the United States has may provide important information about PPCS, if the proper large scale studies are done. There are cultural differences in the expression of whiplash associated disorders (WAD) (Obelieniene et al., 1999), and the same may be expected in PPCS. Incomplete effort is another major factor contaminating any study looking at long-term

neuropsychological sequelae of concussion (Ross et al., 2006a; Ross et al., 2006b), which represents a topic of its own for review (Iverson & Binder, 2000).

Ecological Validity of the Clinical Neuropsychological Approach

Ecological validity of neuropsychological assessment remains an ever present concern (Chaytor et al., 2006; Moritz et al., 2004; Odhuba et al., 2005; Wood & Lioffi, 2006). As an example, the antemortem clinical neuropsychological testing in the concussed patient previously described who met PPCS criteria and who at autopsy had verified pathology of brain injury, was all normal yet this individual had “real-world” difficulty running his business, problems not evident before his injury (Bigler, 2004). Standardized paper-and-pencil tests typically conducted in the sterile laboratory may simply not tap the cognitive symptom being experienced by the individual with PPCS. This very point has been made by Collie et al. (2006) in determining which kinds of measurements are most sensitive in detecting problems in those who remain symptomatic after concussion. Obviously, cognitive skills, in particular working memory and executive function, can place much higher demands on neural integrity in the real world than what can be assessed by any current clinical neuropsychological technique in the laboratory.

Assessment in sports concussion has recognized the need to move beyond traditional neuropsychological assessment with the development of more tailored assessment tools in the athlete with concussion (Broglio et al., 2007; Parker et al., 2007). Such assessments are also taking advantage of computerized and virtual assessment techniques as well as the ability to automate the assessment (Cernich et al., 2007; Iverson et al., 2005; Schatz & Putz, 2006; Slobounov et al., 2006). Likewise, various cognitive neuroscience measures either by themselves or combined with functional neuroimaging methods hold great promise for more accurate assessment of the effects of TBI on behavior and cognition (Bergemalm & Lyxell, 2005; Casson et al., 2006; Chan, 2001; Chen et al., 2007; Cicerone et al., 2006; Dockree et al., 2006b; Jantzen et al., 2004; Mendez et al., 2005; O’Keeffe et al., 2007a; O’Keeffe et al., 2007b; Scheibel et al., 2007; Suh et al., 2006). These types of studies applied to PPCS will likely advance the field rather than another round of testing with traditional “clinical” neuropsychological measures (Heitger et al., 2004, 2005, 2006).

Confounding Factors That Must be Considered in the Design of PPCS Studies and the Accurate Determination of Neuropsychological Sequelae

The fact that the eight symptoms of PCS [i.e., (1) becoming fatigued easily, (2) disordered sleep, (3) headache, (4) vertigo or dizziness, (5) irritability, (6) anxiety, depression or

affective lability, (7) changes in personality, and (8) apathy or lack of spontaneity] as outlined by DSM-IV (pp. 704–705) *all* overlap such that *all* coexist with a myriad of other medical and psychiatric diagnoses, underscores how complicated the design of the ideal study has to be to truly assess PPCS. For example, Iverson (2006) points out the commonness of misdiagnosing PPCS when the symptoms are really driven by depression and how depression can be misattributed to concussion (Chamelian & Feinstein, 2006; Meares et al., in press). In fact every PPCS symptom can occur independent of a head injury (Iverson et al., 2007). Also, a threshold issue exists where symptoms have to rise beyond a baseline before PPCS can be diagnosed (Chan, 2005). Post-traumatic pain correlates with presence of PPCS (Sheedy et al., 2006); and pain has its own set of correlates, by itself, potentially affecting cognitive performance and emotional status (Alfano, 2006; Karp et al., 2006). None of this even addresses the complexity of WAD, as already mentioned, and WAD pain-related problems (Holm et al., 2006; Johansson, 2006; Zumsteg et al., 2006), nor post-traumatic headaches (Lew et al., 2006; Weiss et al., 1991) which are commonplace in concussion, especially those caused by MVAs.

Not only is the brain concussed, but also other organs such as the eye, inner ear, and soft internal organs (Frater & Haindl, 2003; Keane & Baloh, 1992; Nolle et al., 2004); and injury to these organs can be a source of symptoms. With regards to organs of the head, vertigo, dizziness, tinnitus, and ocular disturbance are commonplace; and they relate to cognitive sequela associated with mTBI (Suh et al., 2006). Presence of any of these symptoms may confound the neuropsychological presentation and sequela of the mTBI patient but are rarely controlled. What is particularly important about pain, regardless of its source, is that pain changes the functioning of the brain, demonstrated by both structural as well as functional imaging (Schweinhart et al., 2006). Also, the nature and extent of early medication treatment in those who sustain mTBI, may also relate to who develops PPCS (Meares et al., 2006).

Fatigue is a common and persistent problem in PCSS (Stulemeijer et al., 2006; Ziino & Ponsford, 2006), and it too has its own set of neurochemical, neuroimaging, and neuropsychological differences (de Lange et al., 2004; Kozora et al., 2006). The same can be said about the co-occurrence of PTSD in those involved in accidental injury or assault as the source of their concussion (Bryant, 2001; Creamer et al., 2005; McCauley et al., 2001) and the role of stress hormones in the behavioral response to injury (Sojka et al., 2006). PTSD alone has its own unique effect on neuropsychological performance (Vasterling & Bremner, 2006; Vasterling et al., 2006; Veltmeyer et al., 2005). Even for those who do not develop PTSD, being in an accident (Mayou & Bryant, 2002) or an assault (Johansen et al., 2006) or just sustaining a brain injury (Prigatano et al., 2005) is stress producing.

Mooney and colleagues have documented that many with persistent symptoms following concussion meet criteria for

conversion disorder (CD (Mooney & Speed, 2001). However, the neurobiology of CD, including neuroticism, is starting to emerge and it may not be as “functional” as believed (Allet & Allet, 2006; Atmaca et al., 2006; Ghaffar et al., 2006; Schonfeldt-Lecuona et al., 2006; Stonnington et al., 2006; Ward et al., 2003; Wright et al., 2006). Theories and functional neuroimaging studies of CD imply the involvement of limbic regions, inferior frontal and medial temporal lobe structures, the very regions most likely injured in TBI. Is there an increased prevalence of conversion disorder in individuals concussed because these areas are injured? Neuropsychology should be exploring the potential neurobiology of this observation, not merely writing this off as a mere functional manifestation of concussion (Ashman et al., 2006). Recently, Wood (2005) has put forth a diathesis-stress model as a beginning attempt to describe these relationships.

It has long been known that pre-morbid factors predispose those with history of neuropsychiatric disorder to be more likely to experience PPCS once concussed (Karzmark et al., 1995; Ponsford, 2005). As such, any study that examines PPCS that does not take into consideration pre-morbid factors likely overlooks important and relevant information that may contribute to the disorder.

It is interesting that only recently has research begun to examine the role of pituitary injury in TBI to functional outcome, even in concussion (Acerini et al., 2006; Kelestimur, 2005; Kelly et al., 2006; Tanriverdi et al., 2007). As shown by the Bayly et al. (2005) and Viano et al. (2005b) studies, the hypothalamic-pituitary axis is particularly vulnerable to physical strain in concussion. Pituitary dysfunction can be associated with many of the same symptoms as seen by PPCS (Casanueva et al., 2006; Powner et al., 2006), yet this has not been systematically investigated in PPCS. This is particularly important because of some pituitary associated physical and neuropsychiatric symptoms are treatable.

Similarly, the basal forebrain resides just anterior to the hypothalamus housing important nuclei and pathways for cholinergic innervation of the brain. The basal forebrain is another region that sustains significant strain effects in biomechanical modeling of concussion and in moderate or greater injury, is consistently damaged (Bigler, 2005; Conner et al., 2005). However, this region has never been systematically examined in PPCS.

The elegant reconstruction of concussion by Viano et al. (2005b) clearly demonstrates that each concussion places unique stress and strain on the brain. Just as clear from this research is that no two concussions are identical in terms of how the brain is impacted. So if one does not take into consideration the impact and physical dynamics of the injury and subject characteristics (including genetics), neuropsychological sequelae could vary widely with regards to the brain regions most likely injured even though all subjects had sustained a “concussion”. Unfortunately, for most research on PPCS such information has never been obtained and this has never been systematically investigated other

than in sports concussion. For example, concussion in MVA victims may be different depending on whether it was a front, side or rear impact, whether the car spun, rolled or flipped, etc., the type of car driven, and how and what seat belts were worn, etc. (Elliott et al., 2006). To date this heterogeneity in injury dynamics has simply been overlooked and all such subjects are merely lumped into a single category yet these injury dynamics may make a significant difference in how and where the brain is injured, differences that may be critical in the expression of PPCS.

The prospective design used by the McCrea et al. (2003) study is the proper prototype and standard that should be sought in studying PPCS in non-sports related concussion. To date this has not been done and therefore there are no large-scale, long-term prospective studies of non-sports related concussion that have been conducted. However, the study by Jackson et al. (2007) is a first attempt to accomplish such, where they examined their university-based Trauma I center registry for a single year and identified 97 adult trauma patient survivors from their ICU who had negative CT scan for intracranial hemorrhage, ostensibly eliminating those with obvious severe head injury. Within 12 to 24 months post-discharge, they were able to follow-up with a comprehensive neuropsychological battery of tests on 58 of these subjects and presence of concussion was associated with poorer neuropsychological outcome.

CONCLUSION

From a neuropathological standpoint, this review demonstrates that concussion can lead to structural damage. From the biomechanics of concussion, the vulnerability of the upper brainstem, hypothalamic-pituitary axis, medial temporal lobe and basal forebrain and long-coursing white matter fibers, particularly involving the corpus callosum and fornix are the brain regions most likely to give rise to post-concussive symptoms.

Confusion in the literature on this topic comes from differences in terminology and definitional standards as well as poor research designs where small sample sizes, samples of convenience, selected clinical sub-samples and research that may have an agenda behind it has created serious interpretative problems with regards to the neuropsychology of concussion and its sequelae. Prospective studies of concussion where large trauma centers assess, follow and tract patients with concussion and follow such a cohort prospectively using uniform and more ecologically valid cognitive assessment protocols simply have not been done. In such a group it would be reasonable that additional data could be obtained that would provide more information about the biomechanics of injury and a host of other medical and demographic factors, including attempts to be establish pre-injury level of function. In one of the largest reviews of mTBI, the WHO task force that reviewed mTBI literature up to 2004 concluded that mTBI research is “of varying quality and causal inferences are often mistakenly drawn from cross-sectional studies (p. 84,” (Carroll et al., 2004a),

see also (Ragnarsson, 2006) The only correction for this gaffe in the neuropsychology of concussion, and potential long-term sequelae of PPCS, will be large, unbiased prospective studies that address the issues raised in this review. The importance of understanding this more accurately and completely is the fact that concussion is reportedly the most common of all neurological injuries and this is also true of the Iraq and Afghanistan war (Das & Moorthi, 2005; Okie, 2005; Warden, 2006; Warden & French, 2005), where unofficial estimates place the numbers in the tens of thousands (Bob Woodruff Reports. February 27, 2007: www.abc.com), potentially as high as, “1 out of every 10 returning service men and women” [p. 16, American Academy of Neurology News, 20(6), 2007]. Neuropsychology needs to better understand PPCS and this review offers a number of very testable hypotheses for future research.

ACKNOWLEDGMENTS

The information in this manuscript and the manuscript itself is new and original and has never been published whether electronically or in print. The author also acknowledges the support in part by the National Institutes of Health federal grant 1 R01 HD048946-01A2 and the Ira Fulton Foundation. The technical assistance of Tracy Abildskov and Craig Vickers and the editorial assistance of Jo Ann Petrie are also gratefully acknowledged.

REFERENCES

- Acerini, C.L., Tasker, R.C., Bellone, S., Bona, G., Thompson, C.J., & Savage, M.O. (2006). Hypopituitarism in childhood and adolescence following traumatic brain injury: The case for prospective endocrine investigation. *European Journal of Endocrinology*, *155*, 663–669.
- Alexander, S., Kerr, M.E., Kim, Y., Kamboh, M.I., Beers, S.R., & Conley, Y.P. (2007). Apolipoprotein E4 allele presence and functional outcome after severe traumatic brain injury. *Journal of Neurotrauma*, *24*, 790–797.
- Alfano, D.P. (2006). Emotional and pain-related factors in neuropsychological assessment following mild traumatic brain injury. *Brain and Cognition*, *60*, 194–196.
- Allet, J.L. & Allet, R.E. (2006). Somatoform disorders in neurological practice. *Current Opinions in Psychiatry*, *19*, 413–420.
- American Congress of Rehabilitation Medicine Head Injury Interdisciplinary Special Interest Group. (1993). Definition of mild traumatic brain injury. *Journal of Head Trauma Rehabilitation*, *8*, 86–87.
- Andersen, P., Morris, R., Amaral, D., Bliss, T., & O’Keefe, J. (2006). *The hippocampus book*. New York: Oxford University Press.
- Anderson, R.W., Brown, C.J., Blumbergs, P.C., McLean, A.J., & Jones, N.R. (2003). Impact mechanics and axonal injury in a sheep model. *Journal of Neurotrauma*, *20*, 961–974.
- Anderson, T., Heitger, M., & Macleod, A.D. (2006). Concussion and mild head injury. *Practical Neurology*, *6*, 342–357.
- Ashman, T.A., Gordon, W.A., Cantor, J.B., & Hibbard, M.R. (2006). Neurobehavioral consequences of traumatic brain injury. *Mt Sinai Journal of Medicine*, *73*, 999–1005.
- Ashwal, S., Babikian, T., Gardner-Nichols, J., Freier, M.C., Tong, K.A., & Holshouser, B.A. (2006). Susceptibility-weighted imag-

- ing and proton magnetic resonance spectroscopy in assessment of outcome after pediatric traumatic brain injury. *Archives of Physical Medicine and Rehabilitation*, 87, 50–58.
- Atmaca, M., Aydin, A., Tezcan, E., Poyraz, A.K., & Kara, B. (2006). Volumetric investigation of brain regions in patients with conversion disorder. *Progress in Neuropsychopharmacological Biology and Psychiatry*, 30, 708–713.
- Bach-y-Rita, P. (2004). Is it possible to restore function with two percent surviving neural tissue? *Journal of Integrated Neuroscience*, 3, 3–6.
- Barrow, I.M., Collins, J.N., & Britt, L.D. (2006a). The influence of an auditory distraction on rapid naming after a mild traumatic brain injury: A longitudinal study. *Journal of Trauma*, 61, 1142–1149.
- Barrow, I.M., Hough, M., Rastatter, M.P., Walker, M., Holbert, D., & Rotondo, M.F. (2006b). The effects of mild traumatic brain injury on confrontation naming in adults. *Brain Injury*, 20, 845–855.
- Bayly, P.V., Cohen, T.S., Leister, E.P., Ajo, D., Leuthardt, E.C., & Genin, G.M. (2005). Deformation of the human brain induced by mild acceleration. *Journal of Neurotrauma*, 22, 845–856.
- Bayly, P.V., Dikranian, K.T., Black, E.E., Young, C., Qin, Y.Q., Labruyere, J., & Olney, J.W. (2006). Spatiotemporal evolution of apoptotic neurodegeneration following traumatic injury to the developing rat brain. *Brain Research*, 1107, 70–81.
- Bazarian, J.J., Beck, C., Blyth, B., von Ahsen, N., & Hasselblatt, M. (2006a). Impact of creatine kinase correction on the predictive value of S-100B after mild traumatic brain injury. *Restoration of Neurology and Neuroscience*, 24, 163–172.
- Bazarian, J.J., McClung, J., Shah, M.N., Cheng, Y.T., Flesher, W., & Kraus, J. (2005). Mild traumatic brain injury in the United States, 1998–2000. *Brain Injury*, 19, 85–91.
- Bazarian, J.J., Zemlan, F.P., Mookerjee, S., & Stigbrand, T. (2006b). Serum S-100B and cleaved-tau are poor predictors of long-term outcome after mild traumatic brain injury. *Brain Injury*, 20, 759–765.
- Begaz, T., Kyriacou, D.N., Segal, J., & Bazarian, J.J. (2006). Serum biochemical markers for post-concussion syndrome in patients with mild traumatic brain injury. *Journal of Neurotrauma*, 23, 1201–1210.
- Belanger, H.G., Curtiss, G., Demery, J.A., Lebowitz, B.K., & Vanderploeg, R.D. (2005). Factors moderating neuropsychological outcomes following mild traumatic brain injury: A meta-analysis. *Journal of the International Neuropsychological Society*, 11, 215–227.
- Bergemalm, P.O. & Lyxell, B. (2005). Appearances are deceptive? Long-term cognitive and central auditory sequelae from closed head injury. *International Journal of Audiology*, 44, 39–49.
- Berker, E. (1996). Diagnosis, physiology, pathology and rehabilitation of traumatic brain injuries. *International Journal of Neuroscience*, 85, 195–220.
- Bernstein, D.M. (2002). Information processing difficulty long after self-reported concussion. *Journal of the International Neuropsychological Society*, 8, 673–682.
- Beschorner, R., Nguyen, T.D., Gozalan, F., Pedal, I., Mattern, R., Schluesener, H.J., Meyermann, R., & Schwab, J.M. (2002). CD14 expression by activated parenchymal microglia/macrophages and infiltrating monocytes following human traumatic brain injury. *Acta Neuropathologica (Berlin)*, 103, 541–549.
- Bigler, E.D. (2004). Neuropsychological results and neuropathological findings at autopsy in a case of mild traumatic brain injury. *Journal of the International Neuropsychological Society*, 10, 794–806.
- Bigler, E.D. (2005). *Structural Imaging*. Washington, D.C.: American Psychiatric Publishing, Inc.
- Bigler, E.D. (2006). Can author bias be determined in forensic neuropsychology research published in Archives of Clinical Neuropsychology? *Archives in Clinical Neuropsychology*, 21, 503–508.
- Bigler, E.D. (2007). Anterior and middle cranial fossa in traumatic brain injury: Relevant neuroanatomy and neuropathology in the study of neuropsychological outcome. *Neuropsychology*, 21, 515–531.
- Bigler, E.D., Ryser, D.K., Gandhi, P., Kimball, J., & Wilde, E.A. (2006). Day-of-injury computerized tomography, rehabilitation status, and development of cerebral atrophy in persons with traumatic brain injury. *American Journal of Physical Medicine and Rehabilitation*, 85, 793–806.
- Binder, L.M., Rohling, M.L., & Larrabee, J. (1997). A review of mild head trauma. Part I: Meta-analytic review of neuropsychological studies. *Journal of Clinical Experiments in Neuropsychology*, 19, 421–431.
- Blinkov, S.M., Gabibov, G.A., & Tanyashin, S.V. (1992). Variations in location of the arteries coursing between the brain stem and the free edge of the tentorium. *Journal of Neurosurgery*, 76, 973–978.
- Blostein, P. & Jones, S.J. (2003). Identification and evaluation of patients with mild traumatic brain injury: Results of a national survey of level I trauma centers. *Journal of Trauma*, 55, 450–453.
- Blumbergs, P.C., Scott, G., Manavis, J., Wainwright, H., Simpson, D.A., & McLean, A.J. (1994). Staining of amyloid precursor protein to study axonal damage in mild head injury. *Lancet*, 344, 1055–1056.
- Blumbergs, P.C., Scott, G., Manavis, J., Wainwright, H., Simpson, D.A., & McLean, A.J. (1995). Topography of axonal injury as defined by amyloid precursor protein and the sector scoring method in mild and severe closed head injury. *Journal of Neurotrauma*, 12, 565–572.
- Boake, C., McCauley, S.R., Levin, H.S., Pedroza, C., Contant, C.F., Song, J.X., Brown, S.A., Goodman, H., Brundage, S.I., & Diaz-Marchan, P.J. (2005). Diagnostic criteria for postconcussional syndrome after mild to moderate traumatic brain injury. *Journal of Neuropsychiatry and Clinical Neuroscience*, 17, 350–356.
- Bradshaw, D.R., Ivarsson, J., Morfey, C.L., & Viano, D.C. (2001). Simulation of acute subdural hematoma and diffuse axonal injury in coronal head impact. *Journal of Biomechanics*, 34, 85–94.
- Broglio, S.P., Macciocchi, S.N., & Ferrara, M.S. (2007). Sensitivity of the concussion assessment battery. *Neurosurgery*, 60, 1050–1057; discussion 1057–1058.
- Bryant, R.A. (2001). Posttraumatic stress disorder and mild brain injury: Controversies, causes and consequences. *Journal of Clinical and Experimental Neuropsychology*, 23, 718–728.
- Buki, A. & Povlishock, J.T. (2006). All roads lead to disconnection?—Traumatic axonal injury revisited. *Acta Neurochir (Wien)*, 148, 181–193; discussion 193–184.
- Cantu, R.C. (2003). Recurrent athletic head injury: Risks and when to retire. *Clinical Sports Medicine*, 22, 593–603.
- Cantu, R.C. (2007). Athletic concussion: Current understanding as of 2007. *Neurosurgery*, 60, 963–964.
- Carroll, L.J., Cassidy, J.D., Holm, L., Kraus, J., & Coronado, V.G. (2004a). Methodological issues and research recommendations for mild traumatic brain injury: The WHO Collaborating

- Centre Task Force on Mild Traumatic Brain Injury. *Journal of Rehabilitation Medicine*, 43 (Suppl.), 113–125.
- Carroll, L.J., Cassidy, J.D., Peloso, P.M., Borg, J., von Holst, H., Holm, L., Paniak, C., & Pepin, M. (2004b). Prognosis for mild traumatic brain injury: Results of the WHO Collaborating Centre Task Force on Mild Traumatic Brain Injury. *Journal of Rehabilitation Medicine*, 43 (Suppl.), 84–105.
- Casanueva, F.F., Ghigo, E., Polak, M., & Savage, M.O. (2006). The importance of investigation of pituitary function in children and adolescents following traumatic brain injury. *Journal of Endocrinological Investigation*, 29, 764–766.
- Casson, I.R., Pellman, E.J., & Viano, D.C. (2006). Chronic traumatic encephalopathy in a National Football League player. *Neurosurgery*, 59, E1152.
- Cecil, K.M., Hills, E.C., Sandel, M.E., Smith, D.H., McIntosh, T.K., Mannon, L.J., Sinson, G.P., Bagley, L.J., Grossman, R.I., & Lenkinski, R.E. (1998). Proton magnetic resonance spectroscopy for detection of axonal injury in the splenium of the corpus callosum of brain-injured patients. *Journal of Neurosurgery*, 88, 795–801.
- Cernich, A., Reeves, D., Sun, W., & Bleiberg, J. (2007). Automated Neuropsychological Assessment Metrics sports medicine battery. *Archives of Clinical Neuropsychology*, 22 (Suppl. 1), S101–114.
- Chamelian, L. & Feinstein, A. (2006). The effect of major depression on subjective and objective cognitive deficits in mild to moderate traumatic brain injury. *Journal of Neuropsychiatry and Clinical Neuroscience*, 18, 33–38.
- Chamelian, L., Reis, M., & Feinstein, A. (2004). Six-month recovery from mild to moderate Traumatic Brain Injury: The role of APOE-epsilon4 allele. *Brain*, 127, 2621–2628.
- Chan, R.C. (2001). Attentional deficits in patients with post-concussion symptoms: A componential perspective. *Brain Injury*, 15, 71–94.
- Chan, R.C. (2005). How severe should symptoms be before someone is said to be suffering from post-concussion syndrome? An exploratory study with self-reported checklist using Rasch analysis. *Brain Injury*, 19, 1117–1124.
- Chappell, M.H., Ulug, A.M., Zhang, L., Heitger, M.H., Jordan, B.D., Zimmerman, R.D., & Watts, R. (2006). Distribution of microstructural damage in the brains of professional boxers: A diffusion MRI study. *Journal of Magnetic Resonance Imaging*, 24, 537–542.
- Chaytor, N., Schmitter-Edgecombe, M., & Burr, R. (2006). Improving the ecological validity of executive functioning assessment. *Archives of Clinical Neuropsychology*, 21, 217–227.
- Chen, J.K., Johnston, K.M., Collie, A., McCrory, P., & Ptito, A. (2007). A validation of the post concussion symptom scale in the assessment of complex concussion using cognitive testing and functional MRI. *Journal of Neurology Neurosurgery and Psychiatry*, 78, 1231–1238.
- Chen, S.H., Kareken, D.A., Fastenau, P.S., Trexler, L.E., & Hutchins, G.D. (2003). A study of persistent post-concussion symptoms in mild head trauma using positron emission tomography. *Journal of Neurology Neurosurgery and Psychiatry*, 74, 326–332.
- Cicerone, K., Levin, H., Malec, J., Stuss, D., & Whyte, J. (2006). Cognitive rehabilitation interventions for executive function: Moving from bench to bedside in patients with traumatic brain injury. *Journal of Cognitive and Neuroscience*, 18, 1212–1222.
- Cohen, B.A., Inglese, M., Rusinek, H., Babb, J.S., Grossman, R.I., & Gonen, O. (2007). Proton MR spectroscopy and MRI-volumetry in mild traumatic brain injury. *AJNR American Journal of Neuroradiology*, 28, 907–913.
- Collie, A., Makdissi, M., Maruff, P., Bennell, K., & McCrory, P. (2006). Cognition in the days following concussion: Comparison of symptomatic versus asymptomatic athletes. *J Neurology Neurosurgery and Psychiatry*, 77, 241–245.
- Conner, J.M., Chiba, A.A., & Tuszynski, M.H. (2005). The basal forebrain cholinergic system is essential for cortical plasticity and functional recovery following brain injury. *Neuron*, 46, 173–179.
- Crawford, M.A., Knight, R.G., & Alsop, B.L. (2007). Speed of word retrieval in postconcussion syndrome. *Journal of the International Neuropsychological Society*, 13, 178–182.
- Creamer, M., O'Donnell, M.L., & Pattison, P. (2005). Amnesia, traumatic brain injury, and posttraumatic stress disorder: a methodological inquiry. *Behavior Research and Therapy*, 43, 1383–1389.
- Crosby, E.C. & Schnitzlein, H.N. (1982). *Comparative correlative neuroanatomy of the vertebrate telencephalon*. New York: Macmillan Publishing Co.
- Das, R.R. & Moorthi, R.N. (2005). Traumatic brain injury in the war zone. *N Engl J Med*, 353, 633–634.
- De Kruijk, J.R., Leffers, P., Menheere, P.P., Meerhoff, S., Rutten, J., & Twijnstra, A. (2002). Prediction of post-traumatic complaints after mild traumatic brain injury: Early symptoms and biochemical markers. *Journal of Neurology Neurosurgery and Psychiatry*, 73, 727–732.
- Delaney, J.S., Abuzevad, F., Correa, J.A., & Foxford, R. (2005). Recognition and characteristics of concussions in the emergency department population. *Journal of Emergency Medicine*, 29, 189–197.
- de Lange, F.P., Kalkman, J.S., Bleijenberg, G., Hagoort, P., van der Werf, S.P., van der Meer, J.W., & Toni, I. (2004). Neural correlates of the chronic fatigue syndrome—an fMRI study. *Brain*, 127(Pt 9), 1948–1957.
- de la Plata, C.M., Ardelean, A., Koovakkattu, D., Srinivasan, P., Miller, A., Phuong, V., Harper, C., Moore, C., Whittemore, A., Madden, C., Diaz-Arrastia, R., & Devous, M., Sr. (2007). Magnetic resonance imaging of diffuse axonal injury: Quantitative assessment of white matter lesion volume. *Journal of Neurotrauma*, 24, 591–598.
- De Monte, V.E., Geffen, G.M., May, C.R., McFarland, K., Heath, P., & Neralic, M. (2005). The acute effects of mild traumatic brain injury on finger tapping with and without word repetition. *Journal of Clinical Experiments in Neuropsychology*, 27, 224–239.
- Desmurget, M., Bonnetblanc, F., & Duffau, H. (2007). Contrasting acute and slow-growing lesions: A new door to brain plasticity. *Brain*, 130, 898–914.
- Diaz-Arrastia, R. & Baxter, V.K. (2006). Genetic factors in outcome after traumatic brain injury: What the human genome project can teach us about brain trauma. *Journal of Head Trauma Rehabilitation*, 21, 361–374.
- Dockree, P.M., Bellgrove, M.A., O'Keefe, F.M., Moloney, P., Aimola, L., Carton, S., & Robertson, I.H. (2006a). Sustained attention in traumatic brain injury (TBI) and healthy controls: Enhanced sensitivity with dual-task load. *Experimental Brain Research*, 168, 218–229.
- Dockree, P.M., O'Keefe, F.M., Moloney, P., Bishara, A.J., Carton, S., Jacoby, L.L., & Robertson, I.H. (2006b). Capture by misleading information and its false acceptance in patients with traumatic brain injury. *Brain*, 129, 128–140.

- Duff, D. (2001). Review article: Altered states of consciousness, theories of recovery, and assessment following a severe traumatic brain injury. *Axone*, 23, 18–23.
- Duffau, H. (2006). Brain plasticity: From pathophysiological mechanisms to therapeutic applications. *Journal of Clinical Neuroscience*, 13, 885–897.
- Elliott, M.R., Arbogast, K.A., & Durbin, D.R. (2006). A latent class analysis of injury patterns among rear-seated, seat-belted children. *Journal of Trauma*, 61, 1244–1248.
- Evans, R.W. (1994). The postconcussion syndrome: 130 years of controversy. *Seminars in Neurology*, 14, 32–39.
- Fijalkowski, R.J., Ellingson, B.M., Stemper, B.D., Yoganandan, N., Gennarelli, T.A., & Pintar, F.A. (2006). Interface parameters of impact-induced mild traumatic brain injury. *Biomedical Sciences Instrumentation*, 42, 108–113.
- Frater, C.J. & Haindl, W. (2003). Blunt trauma soft-tissue uptake on skeletal scintigraphy. *Clinical Nuclear Medicine*, 28, 699–700.
- Frencham, K.A., Fox, A.M., & Maybery, M.T. (2005). Neuropsychological studies of mild traumatic brain injury: A meta-analytic review of research since 1995. *Journal of Clinical and Experimental Neuropsychology*, 27, 334–351.
- Gaetz, M. (2004). The neurophysiology of brain injury. *Clinical Neurophysiology*, 115, 4–18.
- Gale, S.D., Johnson, S.C., Bigler, E.D., & Blatter, D.D. (1995). Nonspecific white matter degeneration following traumatic brain injury. *Journal of the International Neuropsychological Society*, 1, 17–28.
- Geddes, D.M., LaPlaca, M.C., & Cargill, R.S., 2nd. (2003). Susceptibility of hippocampal neurons to mechanically induced injury. *Experimental Neurology*, 184, 420–427.
- Ghaffar, O., Staines, W.R., & Feinstein, A. (2006). Unexplained neurologic symptoms: An fMRI study of sensory conversion disorder. *Neurology*, 67, 2036–2038.
- Giza, C.C. & Prins, M.L. (2006). Is being plastic fantastic? Mechanisms of altered plasticity after developmental traumatic brain injury. *Developmental Neuroscience*, 28, 364–379.
- Gowda, N.K., Agrawal, D., Bal, C., Chandrashekar, N., Tripathi, M., Bandopadhyaya, G.P., Malhotra, A., & Mahapatra, A.K. (2006). Technetium Tc-99m ethyl cysteinate dimer brain single-photon emission CT in mild traumatic brain injury: A prospective study. *AJNR American Journal of Neuroradiology*, 27, 447–451.
- Gronwall, D. & Wrightson, P. (1975). Cumulative effect of concussion. *Lancet*, 2, 995–997.
- Guigon, E., Baraduc, P., & Desmurget, M. (2007). Computational motor control: Redundancy and invariance. *Journal of Neurophysiology*, 97, 331–347.
- Gurkoff, G.G., Giza, C.C., & Hovda, D.A. (2006). Lateral fluid percussion injury in the developing rat causes an acute, mild behavioral dysfunction in the absence of significant cell death. *Brain Resonance*, 1077, 24–36.
- Guskiewicz, K.M., Bruce, S.L., Cantu, R.C., Ferrara, M.S., Kelly, J.P., McCrea, M., Putukian, M., & Valovich McLeod, T.C. (2004). National Athletic Trainers' Association Position Statement: Management of Sport-Related Concussion. *Journal of Athletic Training*, 39, 280–297.
- Guskiewicz, K.M., Marshall, S.W., Bailes, J., McCrea, M., Harding, H.P., Jr., Matthews, A., Mihalik, J.R., & Cantu, R.C. (2007). Recurrent Concussion and Risk of Depression in Retired Professional Football Players. *Medical Science and Sports Exercise*, 39, 903–909.
- Hall, E.D., Sullivan, P.G., Gibson, T.R., Pavel, K.M., Thompson, B.M., & Scheff, S.W. (2005). Spatial and temporal characteristics of neurodegeneration after controlled cortical impact in mice: More than a focal brain injury. *Journal of Neurotrauma*, 22, 252–265.
- Hall, R.C. & Chapman, M.J. (2005). Definition, diagnosis, and forensic implications of postconcussional syndrome. *Psychosomatics*, 46, 195–202.
- Heitger, M.H., Anderson, T.J., Jones, R.D., Dalrymple-Alford, J.C., Frampton, C.M., & Ardagh, M.W. (2004). Eye movement and visuomotor arm movement deficits following mild closed head injury. *Brain*, 127, 575–590.
- Heitger, M.H., Jones, R.D., Dalrymple-Alford, J.C., Frampton, C.M., Ardagh, M.W., & Anderson, T.J. (2006). Motor deficits and recovery during the first year following mild closed head injury. *Brain Injury*, 20, 807–824.
- Heitger, M.H., Macaskill, M.R., Jones, R.D., & Anderson, T.J. (2005). The impact of mild closed head injury on involuntary saccadic adaptation: Evidence for the preservation of implicit motor learning. *Brain Injury*, 19, 109–117.
- Henninger, N., Dutzmann, S., Sicard, K.M., Kollmar, R., Bardutzky, J., & Schwab, S. (2005). Impaired spatial learning in a novel rat model of mild cerebral concussion injury. *Experimental Neurology*, 195, 447–457.
- Hessen, E., Nestvold, K., & Sundet, K. (2006). Neuropsychological function in a group of patients 25 years after sustaining minor head injuries as children and adolescents. *Scandinavian Journal of Psychology*, 47, 245–251.
- Holm, L.W., Carroll, L.J., Cassidy, J.D., Skillgate, E., & Ahlbom, A. (2006). Widespread pain following whiplash-associated disorders: Incidence, course, and risk factors. *Journal of Rheumatology*, 34, 193–200.
- Holshouser, B.A., Tong, K.A., Ashwal, S., Oyoyo, U., Ghamsary, M., Saunders, D., & Shutter, L. (2006). Prospective longitudinal proton magnetic resonance spectroscopic imaging in adult traumatic brain injury. *Journal of Magnetic Resonance Imaging*, 24, 33–40.
- Hopkins, R.O., Beck, C.J., Burnett, D.L., Weaver, L.K., Victoroff, J., & Bigler, E.D. (2006). Prevalence of white matter hyperintensities in a young healthy population. *Journal of Neuroimaging*, 16, 243–251.
- Hovda, D.A. (2004). Pathophysiology of TBI. In M. Lovell, R.J. Echemendia, J.T. Barth & M.W. Collins (Eds.), *Traumatic brain injury in sports: An international and neuropsychological perspective*. Lisse, The Netherlands: Swets & Zeitlinger Publishers.
- Huh, J.W., Widing, A.G., & Raghupathi, R. (2007). Basic science; repetitive mild non-contusive brain trauma in immature rats exacerbates traumatic axonal injury and axonal calpain activation: A preliminary report. *Journal of Neurotrauma*, 24, 15–27.
- Igarashi, T., Potts, M.B., & Noble-Haeusslein, L.J. (2007). Injury severity determines Purkinje cell loss and microglial activation in the cerebellum after cortical contusion injury. *Experimental Neurology*, 203, 258–268.
- Inglese, M., Bomszyk, E., Gonen, O., Mannon, L.J., Grossman, R.I., & Rusinek, H. (2005a). Dilated perivascular spaces: hallmarks of mild traumatic brain injury. *AJNR American Journal of Neuroradiology*, 26, 719–724.
- Inglese, M., Makani, S., Johnson, G., Cohen, B.A., Silver, J.A., Gonen, O., & Grossman, R.I. (2005b). Diffuse axonal injury in mild traumatic brain injury: A diffusion tensor imaging study. *Journal of Neurosurgery*, 103, 298–303.

- Ivarsson, J., Viano, D.C., & Lovsund, P. (2002). Influence of the lateral ventricles and irregular skull base on brain kinematics due to sagittal plane head rotation. *Journal of Biomechanical Engineering*, *124*, 422–431.
- Iverson, G.I., Zasler, N.D., & Lange, R.T. (Ed.). (2007). *Post-concussion disorder*. New York: Demos.
- Iverson, G.L. (2005). Outcome from mild traumatic brain injury. *Current Opinions in Psychiatry*, *18*, 301–317.
- Iverson, G.L. (2006). Misdiagnosis of the persistent postconcussion syndrome in patients with depression. *Archives in Clinical Neuropsychology*, *21*, 303–310.
- Iverson, G.L. & Binder, L.M. (2000). Detecting exaggeration and malingering in neuropsychological assessment. *Journal of Head Trauma Rehabilitation*, *15*, 829–858.
- Iverson, G.L., Brooks, B.L., Collins, M.W., & Lovell, M.R. (2006a). Tracking neuropsychological recovery following concussion in sport. *Brain Injury*, *20*, 245–252.
- Iverson, G.L., Brooks, B.L., Lovell, M.R., & Collins, M.W. (2006b). No cumulative effects for one or two previous concussions. *British Journal of Sports Medicine*, *40*, 72–75.
- Iverson, G.L., Gaetz, M., Lovell, M.R., & Collins, M.W. (2004). Relation between subjective foggy and neuropsychological testing following concussion. *Journal of the International Neuropsychological Society*, *10*, 904–906.
- Iverson, G.L., Lovell, M.R., & Collins, M.W. (2005). Validity of ImPACT for measuring processing speed following sports-related concussion. *Journal of Clinical and Experimental Neuropsychology*, *27*, 683–689.
- Jackson, J.C., Obremskey, W., Bauer, R., Greevy, R., Cotton, B.A., Anderson, V., Song, Y., & Ely, E.W. (2007). Long-term cognitive, emotional, and functional outcomes in trauma intensive care unit survivors without intracranial hemorrhage. *Journal of Trauma*, *62*, 80–88.
- Jantzen, K.J., Anderson, B., Steinberg, F.L., & Kelso, J.A. (2004). A prospective functional MR imaging study of mild traumatic brain injury in college football players. *AJNR American Journal of Neuroradiology*, *25*, 738–745.
- Johansen, V.A., Wahl, A.K., Eilertsen, D.E., Hanestad, B.R., & Weisaeth, L. (2006). Acute psychological reactions in assault victims of non-domestic violence: Peritraumatic dissociation, post-traumatic stress disorder, anxiety and depression. *Nordic Journal of Psychiatry*, *60*, 452–462.
- Johansson, B.H. (2006). Whiplash injuries can be visible by functional magnetic resonance imaging. *Pain Research & Management*, *11*, 197–199.
- Karp, J.F., Reynolds, C.F., 3rd, Butters, M.A., Dew, M.A., Mazumdar, S., Begley, A.E., Lenze, E., & Weiner, D.K. (2006). The relationship between pain and mental flexibility in older adult pain clinic patients. *Pain Medicine*, *7*, 444–452.
- Karzmark, P., Hall, K., & Englander, J. (1995). Late-onset post-concussion symptoms after mild brain injury: The role of pre-morbid, injury-related, environmental, and personality factors. *Brain Injury*, *9*, 21–26.
- Kashluba, S., Casey, J.E., & Paniak, C. (2006). Evaluating the utility of ICD-10 diagnostic criteria for postconcussion syndrome following mild traumatic brain injury. *Journal of the International Neuropsychological Society*, *12*, 111–118.
- Keane, J.R. & Baloh, R.W. (1992). Posttraumatic cranial neuropathies. *Neurology Clinics*, *10*, 849–867.
- Kelestimir, F. (2005). Chronic trauma in sports as a cause of hypopituitarism. *Pituitary*, *8*, 259–262.
- Kelly, D.F., McArthur, D.L., Levin, H., Swimmer, S., Dusick, J.R., Cohan, P., Wang, C., & Swerdloff, R. (2006). Neurobehavioral and quality of life changes associated with growth hormone insufficiency after complicated mild, moderate, or severe traumatic brain injury. *Journal of Neurotrauma*, *23*, 928–942.
- Kelly, J.P. (1999). Traumatic brain injury and concussion in sports. *Journal of the American Medical Association*, *282*, 989–991.
- Kennedy, R.E., Livingston, L., Marwitz, J.H., Gueck, S., Kreutzer, J.S., & Sander, A.M. (2006). Complicated mild traumatic brain injury on the inpatient rehabilitation unit: A multicenter analysis. *Journal of Head Trauma Rehabilitation*, *21*, 260–271.
- Kent, D.H.R. (2007). When averages hide individual differences in clinical trials. *American Scientist*, *95*, 60–68.
- Kercel, S.W., Reber, A.S., & Manges, W.W. (2005). Some radical implications of Bach-y-Rita's discoveries. *Journal of Integrated Neurosciences*, *4*, 551–565.
- Kertesz, A.G. & Gold, B.T. (2003). *Recovery of cognition* (4th ed.). New York: Oxford University Press.
- Kharatishvili, I., Nissinen, J.P., McIntosh, T.K., & Pitkanen, A. (2006). A model of posttraumatic epilepsy induced by lateral fluid-percussion brain injury in rats. *Neuroscience*, *140*, 685–697.
- King, N.S. (2003). Post-concussion syndrome: Clarity amid the controversy? *British Journal of Psychiatry*, *183*, 276–278.
- Konsman, J.P., Drukarch, B., & Van Dam, A.M. (2007). (Peri)vascular production and action of pro-inflammatory cytokines in brain pathology. *Clinical Science (London)*, *112*, 1–25.
- Korn, A., Golan, H., Melamed, I., Pascual-Marqui, R., & Friedman, A. (2005). Focal cortical dysfunction and blood-brain barrier disruption in patients with Postconcussion syndrome. *Journal of Clinical Neurophysiology*, *22*, 1–9.
- Kozora, E., Ellison, M.C., & West, S. (2006). Depression, fatigue, and pain in systemic lupus erythematosus (SLE): Relationship to the American College of Rheumatology SLE neuropsychological battery. *Arthritis and Rheumatism*, *55*, 628–635.
- Langlois, J.A., Marr, A., Mitchko, J., & Johnson, R.L. (2005). Tracking the silent epidemic and educating the public: CDC's traumatic brain injury-associated activities under the TBI Act of 1996 and the Children's Health Act of 2000. *Journal of Head Trauma Rehabilitation*, *20*, 196–204.
- Laurer, H.L., Bareyre, F.M., Lee, V.M., Trojanowski, J.Q., Longhi, L., Hoover, R., Saatman, K.E., Raghupathi, R., Hoshino, S., Grady, M.S., & McIntosh, T.K. (2001). Mild head injury increasing the brain's vulnerability to a second concussive impact. *Journal of Neurosurgery*, *95*, 859–870.
- Leclerc, S., Lassonde, M., Delaney, J.S., Lacroix, V.J., & Johnston, K.M. (2001). Recommendations for grading of concussion in athletes. *Sports Medicine*, *31*, 629–636.
- Leker, R.R., Shohami, E., & Constantini, S. (2002). Experimental models of head trauma. *Acta Neurochirurgica Supplement*, *83*, 49–54.
- Levine, B., Fujiwara, E., O'Connor, C., Richard, N., Kovacevic, N., Mandic, M., Restagno, A., Easdon, C., Robertson, I.H., Graham, S.J., Cheung, G., Gao, F., Schwartz, M.L., & Black, S.E. (2006). In vivo characterization of traumatic brain injury neuropathology with structural and functional neuroimaging. *Journal of Neurotrauma*, *23*, 1396–1411.
- Levy, A. (1992). Compensation neurosis rides again. *Brain Injury*, *6*, 401–410.
- Lew, H.L., Lin, P.H., Fuh, J.L., Wang, S.J., Clark, D.J., & Walker, W.C. (2006). Characteristics and treatment of headache after traumatic brain injury: A focused review. *American Journal of Physical and Medical Rehabilitation*, *85*, 619–627.

- Lewine, J.D., Davis, J.T., Bigler, E.D., Thoma, R., Hill, D., Funke, M., Sloan, J.H., Hall, S., & Orrison, W.W. (2007). Objective documentation of traumatic brain injury subsequent to mild head trauma: Multimodal brain imaging with MEG, SPECT, and MRI. *Journal of Head Trauma Rehabilitation*, 22, 141–155.
- Longhi, L., Saatman, K.E., Fujimoto, S., Raghupathi, R., Meaney, D.F., Davis, J., McMillan, B.S.A., Conte, V., Laurer, H.L., Stein, S., Stocchetti, N., & McIntosh, T.K. (2005). Temporal window of vulnerability to repetitive experimental concussive brain injury. *Neurosurgery*, 56, 364–374; discussion 364–374.
- Loring, D.W., Larrabee, G.J., Lee, G.P., & Meador, K.J. (2007). [image omitted] Victoria Symptom Validity Test Performance in a heterogeneous clinical sample. *Clinical Neuropsychology*, 21, 522–531.
- Lundin, A., de Bousard, C., Edman, G., & Borg, J. (2006). Symptoms and disability until 3 months after mild TBI. *Brain Injury*, 20, 799–806.
- MacKenzie, J.D., Siddiqi, F., Babb, J.S., Bagley, L.J., Mannon, L.J., Sinson, G.P., & Grossman, R.I. (2002). Brain atrophy in mild or moderate traumatic brain injury: A longitudinal quantitative analysis. *AJNR American Journal of Neuroradiology*, 23, 1509–1515.
- Maegele, M., Riess, P., Sauerland, S., Bouillon, B., Hess, S., McIntosh, T.K., Mautes, A., Brockmann, M., Koebke, J., Knifka, J., & Neugebauer, E.A. (2005). Characterization of a new rat model of experimental combined neurotrauma. *Shock*, 23, 476–481.
- Mai, J.K., Assheuer, J., & Paxinos, G. (2004). *Atlas of the Human Brain*. Amsterdam: Elsevier.
- Manville, J., Laurer, H.L., Steudel, W.I., & Mautes, A.E. (2007). Changes in cortical and subcortical energy metabolism after repetitive and single controlled cortical impact injury in the mouse. *Journal of Molecular Neuroscience*, 31, 95–100.
- Martin, P. & Leibovich, S.J. (2005). Inflammatory cells during wound repair: The good, the bad and the ugly. *Trends Cell Biology*, 15, 599–607.
- Mathias, J.L., Bigler, E.D., Jones, N.R., Bowden, S.C., Barrett-Woodbridge, M., Brown, G.C., & Taylor, D.J. (2004). Neuropsychological and information processing performance and its relationship to white matter changes following moderate and severe traumatic brain injury: A preliminary study. *Applied Neuropsychology*, 11, 134–152.
- Mayou, R. & Bryant, B. (2002). Outcome 3 years after a road traffic accident. *Psychology Medicine*, 32, 671–675.
- McAllister, T.W., Flashman, L.A., McDonald, B.C., & Saykin, A.J. (2006). Mechanisms of working memory dysfunction after mild and moderate TBI: Evidence from functional MRI and neurogenetics. *Journal of Neurotrauma*, 23, 1450–1467.
- McAllister, T.W., Sparling, M.B., Flashman, L.A., & Saykin, A.J. (2001). Neuroimaging findings in mild traumatic brain injury. *Journal of Clinical and Experimental Neuropsychology*, 23, 775–791.
- McCauley, S.R., Boake, C., Levin, H.S., Contant, C.F., & Song, J.X. (2001). Postconcussional disorder following mild to moderate traumatic brain injury: Anxiety, depression, and social support as risk factors and comorbidities. *Journal of Clinical and Experimental Neuropsychology*, 23, 792–808.
- McCauley, S.R., Boake, C., Pedroza, C., Brown, S.A., Levin, H.S., Goodman, H.S., & Merritt, S.G. (2005). Postconcussional disorder: Are the DSM-IV criteria an improvement over the ICD-10? *Journal of Nervous and Mental Disorders*, 193, 540–550.
- McCrea, M., Guskiewicz, K.M., Marshall, S.W., Barr, W., Randolph, C., Cantu, R.C., Onate, J.A., Yang, J., & Kelly, J.P. (2003). Acute effects and recovery time following concussion in collegiate football players: The NCAA Concussion Study. *Journal of the American Medical Association*, 290, 2556–2563.
- McCrory, P., Johnston, K., Meeuwisse, W., Aubry, M., Cantu, R., Dvorak, J., Graf-Baumann, T., Kelly, J., Lovell, M., & Schamasch, P. (2005). Summary and agreement statement of the 2nd International Conference on Concussion in Sport, Prague 2004. *British Journal of Sports Medicine*, 39, 196–204.
- McCrory, P.R. & Berkovic, S.F. (2000). Video analysis of acute motor and convulsive manifestations in sport-related concussion. *Neurology*, 54, 1488–1491.
- McCrory, P.R. & Berkovic, S.F. (2001). Concussion: The history of clinical and pathophysiological concepts and misconceptions. *Neurology*, 57, 2283–2289.
- McDonald, T.J., Li, C., Vincent, S.E., & Nijland, M.J. (2006). Fetal fornix transection and gestation length in sheep. *Experimental Neurology*, 200, 532–537.
- McHugh, T., Laforce, R., Jr., Gallagher, P., Quinn, S., Diggle, P., & Buchanan, L. (2006). Natural history of the long-term cognitive, affective, and physical sequelae of mild traumatic brain injury. *Brain Cognition*, 60, 209–211.
- Meares, S., Shores, E.A., Batchelor, J., Baguley, I.J., Chapman, J., Gurka, J., & Marosszeky, J.E. (2006). The relationship of psychological and cognitive factors and opioids in the development of the postconcussion syndrome in general trauma patients with mild traumatic brain injury. *Journal of the International and Neuropsychological Society*, 12, 792–801.
- Meares, S., Shores, E.A., Taylor, A.J., Batchelor, J., Bryant, R.A., Baguley, I.J., Chapman, J., Gurka, J., Dawson, K., Capon, L., & Marosszeky, J.E. (in press). Mild traumatic brain injury does not predict acute postconcussion syndrome. *Journal of Neurology, Neurosurgery & Psychiatry*.
- Mendez, C.V., Hurley, R.A., Lassonde, M., Zhang, L., & Taber, K.H. (2005). Mild traumatic brain injury: Neuroimaging of sports-related concussion. *Journal of Neuropsychiatry and Clinical Neuroscience*, 17, 297–303.
- Miller, H. (1961). Accident neurosis. *British Medical Journal*, 1, 919–925.
- Milman, A., Rosenberg, A., Weizman, R., & Pick, C.G. (2005). Mild traumatic brain injury induces persistent cognitive deficits and behavioral disturbances in mice. *Journal of Neurotrauma*, 22, 1003–1010.
- Mooney, G. & Speed, J. (2001). The association between mild traumatic brain injury and psychiatric conditions. *Brain Injury*, 15, 865–877.
- Mooney, G., Speed, J., & Sheppard, S. (2005). Factors related to recovery after mild traumatic brain injury. *Brain Injury*, 19, 975–987.
- Moritz, S., Ferahli, S., & Naber, D. (2004). Memory and attention performance in psychiatric patients: Lack of correspondence between clinician-rated and patient-rated functioning with neuropsychological test results. *Journal of the International of the Neuropsychological Society*, 10, 623–633.
- Moser, R.S., Schatz, P., & Jordan, B.D. (2005). Prolonged effects of concussion in high school athletes. *Neurosurgery*, 57, 300–306; discussion 300–306.
- Moucha, R. & Kilgard, M.P. (2006). Cortical plasticity and rehabilitation. *Prog Brain Res*, 157, 111–122.
- Nolle, C., Todt, I., Seidl, R.O., & Ernst, A. (2004). Pathophysiological changes of the central auditory pathway after blunt trauma of the head. *Journal of Neurotrauma*, 21, 251–258.

- Obelieniene, D., Schrader, H., Bovim, G., Miseviciene, I., & Sand, T. (1999). Pain after whiplash: A prospective controlled inception cohort study. *Journal of Neurology Neurosurgery and Psychiatry*, *66*, 279–283.
- Odhuba, R.A., van den Broek, M.D., & Johns, L.C. (2005). Ecological validity of measures of executive functioning. *British Journal of Clinical Psychology*, *44*, 269–278.
- O’Keeffe, F., Dockree, P., Moloney, P., Carton, S., & Robertson, I.H. (2007a). Awareness of deficits in traumatic brain injury: A multidimensional approach to assessing metacognitive knowledge and online-awareness. *Journal of the International Neuropsychological Society*, *13*, 38–49.
- O’Keeffe, F.M., Dockree, P.M., Moloney, P., Carton, S., & Robertson, I.H. (2007b). Characterising error-awareness of attentional lapses and inhibitory control failures in patients with traumatic brain injury. *Experimental Brain Research*, *180*, 59–67.
- Okie, S. (2005). Traumatic brain injury in the war zone. *New England Journal of Medicine*, *352*, 2043–2047.
- Omalu, B.I., DeKosky, S.T., Minster, R.L., Kambh, M.I., Hamilton, R.L., & Wecht, C.H. (2005). Chronic traumatic encephalopathy in a National Football League player. *Neurosurgery*, *57*, 128–134; discussion 128–134.
- Ost, M., Nylen, K., Csajbok, L., Ohrfelt, A.O., Tullberg, M., Wikkelso, C., Nellgard, P., Rosengren, L., Blennow, K., & Nellgard, B. (2006). Initial CSF total tau correlates with 1-year outcome in patients with traumatic brain injury. *Neurology*, *67*, 1600–1604.
- Page, J.D. (1947). *Abnormal Psychology: A clinical approach to psychological deviants*. New York: McGraw-Hill Book Company.
- Park, E., McKnight, S., Ai, J., & Baker, A.J. (2006). Purkinje cell vulnerability to mild and severe forebrain head trauma. *Journal of Neuropathology and Experimental Neurology*, *65*, 226–234.
- Parker, T.M., Osternig, L.R., van Donkelaar, P., & Chou, L.S. (2007). Recovery of cognitive and dynamic motor function following concussion. *British Journal of Sports Medicine*, *41*, 868–873.
- Pellman, E.J., Viano, D.C., Casson, I.R., Tucker, A.M., Waeckerle, J.F., Powell, J.W., & Feuer, H. (2004). Concussion in professional football: repeat injuries—part 4. *Neurosurgery*, *55*, 860–873; discussion 873–866.
- Ponsford, J. (2005). Rehabilitation interventions after mild head injury. *Current Opinions in Neurology*, *18*, 692–697.
- Povlishock, J.T. & Katz, D.I. (2005). Update of neuropathology and neurological recovery after traumatic brain injury. *Journal of Head Trauma Rehabilitation*, *20*, 76–94.
- Powner, D.J., Boccalandro, C., Alp, M.S., & Vollmer, D.G. (2006). Endocrine failure after traumatic brain injury in adults. *Neurocritical Care*, *5*, 61–70.
- Priestley, J.V. (2007). Promoting anatomical plasticity and recovery of function after traumatic injury to the central or peripheral nervous system. *Brain*, *130*, 895–897.
- Prigatano, G.P., Borgaro, S., Baker, J., & Wethe, J. (2005). Awareness and distress after traumatic brain injury: A relative’s perspective. *Journal of Head Trauma and Rehabilitation*, *20*, 359–367.
- Racette, B.A., Bradley, A., Wrisberg, C.A., & Perlmutter, J.S. (2006). The impact of litigation on neurologic research. *Neurology*, *67*, 2124–2128.
- Ragnarsson, K.T. (2006). Traumatic brain injury research since the 1998 NIH Consensus Conference: Accomplishments and unmet goals. *Journal of Head Trauma Rehabilitation*, *21*, 379–387.
- Rees, P.M. (2003). Contemporary issues in mild traumatic brain injury. *Archives of Physical Medicine and Rehabilitation*, *84*, 1885–1894.
- Reeves, T.M., Phillips, L.L., & Povlishock, J.T. (2005). Myelinated and unmyelinated axons of the corpus callosum differ in vulnerability and functional recovery following traumatic brain injury. *Experimental Neurology*, *196*, 126–137.
- Ropper, A.H. & Gorson, K.C. (2007). Clinical practice. Concussion. *New England Journal of Medicine*, *356*, 166–172.
- Ross, S.R., Putnam, S.H., & Adams, K.M. (2006a). Psychological disturbance, incomplete effort, and compensation-seeking status as predictors of neuropsychological test performance in head injury. *Journal of Clinical Experimental Neuropsychology*, *28*, 111–125.
- Ross, S.R., Putnam, S.H., Millis, S.R., Adams, K.M., & Krukowski, R.A. (2006b). Detecting insufficient effort using the Seashore Rhythm and Speech-Sounds Perception Tests in head injury. *Clinical Neuropsychology*, *20*, 798–815.
- Roy, K., Murdie, J.C., El-Khodori, B.F., Edgar, N., Sardi, S.P., Hooks, B.M., Benoit-Marand, M., Chen, C., Moore, H., O’Donnell, P., Brunner, D., & Corfas, G. (2007). Loss of erbB signaling in oligodendrocytes alters myelin and dopaminergic function, a potential mechanism for neuropsychiatric disorders. *Proceedings of the National Academy of Science USA*, *104*, 8131–8136.
- Royo, N.C., Conte, V., Saatman, K.E., Shimizu, S., Belfield, C.M., Soltesz, K.M., Davis, J.E., Fujimoto, S.T., & McIntosh, T.K. (2006). Hippocampal vulnerability following traumatic brain injury: A potential role for neurotrophin-4/5 in pyramidal cell neuroprotection. *European Journal of Neuroscience*, *23*, 1089–1102.
- Ruff, R.M., Camenzuli, L., & Mueller, J. (1996). Miserable minority: Emotional risk factors that influence the outcome of a mild traumatic brain injury. *Brain Injury*, *10*, 551–565.
- Ruff, R.M. & Jurica, P. (1999). In search of a unified definition for mild traumatic brain injury. *Brain Injury*, *13*, 943–952.
- Rutland-Brown, W., Langlois, J.A., Thomas, K.E., & Xi, Y.L. (2006). Incidence of traumatic brain injury in the United States, 2003. *Journal of Head Trauma Rehabilitation*, *21*, 544–548.
- Ryan, L.M. & Warden, D.L. (2003). Post concussion syndrome. *International Reviews in Psychiatry*, *15*, 310–316.
- Satz, P.S., Alfano, M.S., Light, R.F., Morgenstern, H.F., Zaucha, K.F., Asarnow, R.F., & Newton, S. (1999). Persistent Post-Concussive Syndrome: A proposed methodology and literature review to determine the effects, if any, of mild head and other bodily injury. *J Clinical and Experimental Neuropsychology*, *21*, 620–628.
- Savola, O. & Hillbom, M. (2003). Early predictors of post-concussion symptoms in patients with mild head injury. *European Journal of Neurology*, *10*, 175–181.
- Schatz, P. & Putz, B.O. (2006). Cross-validation of measures used for computer-based assessment of concussion. *Applied Neuropsychology*, *13*, 151–159.
- Scheibel, R.S., Newsome, M.R., Steinberg, J.L., Pearson, D.A., Rauch, R.A., Mao, H., Troyanskaya, M., Sharma, R.G., & Levin, H.S. (2007). Altered brain activation during cognitive control in patients with moderate to severe traumatic brain injury. *Neurorehabilitation and Neural Repair*, *21*, 36–45.
- Scheid, R., Walther, K., Guthke, T., Preul, C., & von Cramon, D.Y. (2006). Cognitive sequelae of diffuse axonal injury. *Archives in Neurology*, *63*, 418–424.
- Schnadower, D., Vazquez, H., Lee, J., Dayan, P., & Roskind, C.G. (2007). Controversies in the evaluation and management of

- minor blunt head trauma in children. *Current Opinions in Pediatrics*, 19, 258–264.
- Schonfeldt-Lecuona, C., Connemann, B.J., Viviani, R., Spitzer, M., & Herwig, U. (2006). Transcranial magnetic stimulation in motor conversion disorder: A short case series. *Journal in Clinical Neurophysiology*, 23, 472–475.
- Schretlen, D.J. & Shapiro, A.M. (2003). A quantitative review of the effects of traumatic brain injury on cognitive functioning. *International Reviews in Psychiatry*, 15, 341–349.
- Schweinhardt, P., Lee, M., & Tracey, I. (2006). Imaging pain in patients: Is it meaningful? *Current Opinions in Neurology*, 19, 392–400.
- Shaw, N.A. (2002). The neurophysiology of concussion. *Progress in Neurobiology*, 67, 281–344.
- Sheedy, J., Geffen, G., Donnelly, J., & Faux, S. (2006). Emergency department assessment of mild traumatic brain injury and prediction of post-concussion symptoms at one month post injury. *J Clinical and Experimental Neuropsychology*, 28, 755–772.
- Silver, J.M., Mc Allister, T.W., & Yudofsky, S.C. (2005). *Textbook of Traumatic Brain Injury*. Washington, DC: American Psychiatric Publishing, Inc.
- Singleton, R.H. & Povlishock, J.T. (2004). Identification and characterization of heterogeneous neuronal injury and death in regions of diffuse brain injury: Evidence for multiple independent injury phenotypes. *Journal of Neuroscience*, 24, 3543–3553.
- Slobounov, S., Slobounov, E., & Newell, K. (2006). Application of virtual reality graphics in assessment of concussion. *Cyberpsychology & Behavior*, 9, 188–191.
- Smith, D.H. (2006). Postconcussional symptoms not a syndrome. *Psychosomatics*, 47, 271–272; author reply 272.
- Sojka, P., Stalnacke, B.M., Bjornstig, U., & Karlsson, K. (2006). One-year follow-up of patients with mild traumatic brain injury: Occurrence of post-traumatic stress-related symptoms at follow-up and serum levels of cortisol, S-100B and neuron-specific enolase in acute phase. *Brain Injury*, 20, 613–620.
- Stalnacke, B.M., Bjornstig, U., Karlsson, K., & Sojka, P. (2005). One-year follow-up of mild traumatic brain injury: Post-concussion symptoms, disabilities and life satisfaction in relation to serum levels of S-100B and neurone-specific enolase in acute phase. *Journal of Rehabilitation Medicine*, 37, 300–305.
- Stern, Y. (2007). *Cognitive Reserve: Theory and applications*. N.Y.: Taylor & Francis.
- Sterr, A., Herron, K., Hayward, C., & Montaldi, D. (2006). Are mild head injuries as mild as we think? Neurobehavioral concomitants of chronic post-concussion syndrome. *BMC Neurology*, 6, 7.
- Stonnington, C.M., Barry, J.J., & Fisher, R.S. (2006). Conversion disorder. *American Journal of Psychiatry*, 163, 1510–1517.
- Stulemeijer, M., van der Werf, S., Bleijenberg, G., Biert, J., Brauer, J., & Pieter, E.V. (2006). Recovery from mild traumatic brain injury: A focus on fatigue. *J Neurology*, 253, 1041–1047.
- Suh, M., Basu, S., Kolster, R., Sarkar, R., McCandliss, B., & Ghajar, J. (2006). Increased oculomotor deficits during target blanking as an indicator of mild traumatic brain injury. *Neuroscience Letters*, 410, 203–207.
- Tagliaferri, F., Compagnone, C., Korsic, M., Servadei, F., & Kraus, J. (2006). A systematic review of brain injury epidemiology in Europe. *Acta Neurochirurgica (Wien)*, 148, 255–268; discussion 268.
- Tang, Y.P., Noda, Y., Hasegawa, T., & Nabeshima, T. (1997). A concussive-like brain injury model in mice (I): Impairment in learning and memory. *Journal of Neurotrauma*, 14, 851–862.
- Tanriverdi, F., Unluhizarci, K., Coksevim, B., Selcuklu, A., Casanueva, F.F., & Kelestimur, F. (2007). Kickboxing sport as a new cause of traumatic brain injury-mediated hypopituitarism. *Clinical Endocrinology (Oxford)*, 66, 360–366.
- Tashlykov, V., Katz, Y., Gazit, V., Zohar, O., Schreiber, S., & Pick, C.G. (2007). Apoptotic changes in the cortex and hippocampus following minimal brain trauma in mice. *Brain Resonance*, 1130, 197–205.
- Tasker, R.C., Salmond, C.H., Westland, A.G., Pena, A., Gillard, J.H., Sahakian, B.J., & Pickard, J.D. (2005). Head circumference and brain and hippocampal volume after severe traumatic brain injury in childhood. *Pediatric Research*, 58, 302–308.
- Tate, D.F. & Bigler, E.D. (2000). Fornix and hippocampal atrophy in traumatic brain injury. *Learning and Memory*, 7, 442–446.
- Tomaiuolo, F., Carlesimo, G.A., Di Paola, M., Petrides, M., Fera, F., Bonanni, R., Formisano, R., Pasqualetti, P., & Caltagirone, C. (2004). Gross morphology and morphometric sequelae in the hippocampus, fornix, and corpus callosum of patients with severe non-missile traumatic brain injury without macroscopically detectable lesions: A T1 weighted MRI study. *Journal of Neurology Neurosurgery and Psychiatry*, 75, 1314–1322.
- Ucar, T., Tanriover, G., Gurer, I., Onal, M.Z., & Kazan, S. (2006). Modified experimental mild traumatic brain injury model. *Journal of Trauma*, 60, 558–565.
- Udekwi, P., Kromhout-Schiro, S., Vaslef, S., Baker, C., & Oller, D. (2004). Glasgow Coma Scale score, mortality, and functional outcome in head-injured patients. *Journal of Trauma*, 56, 1084–1089.
- Ueda, Y., Walker, S.A., & Povlishock, J.T. (2006). Perivascular nerve damage in the cerebral circulation following traumatic brain injury. *Acta Neuropathologica (Berlin)*, 112, 85–94.
- Van Hoesen, G.W., Augustinack, J.C., & Redman, S.J. (1999). Ventromedial temporal lobe pathology in dementia, brain trauma, and schizophrenia. *Annals of the New York Academy of Science*, 877, 575–594.
- Vasterling, J.J. & Bremner, J.D. (2006). The impact of the 1991 Gulf War on the mind and brain: findings from neuropsychological and neuroimaging research. *Philosophical Transactions of the Royal Society of Lond B Biological Science*, 361, 593–604.
- Vasterling, J.J., Proctor, S.P., Amoroso, P., Kane, R., Heeren, T., & White, R.F. (2006). Neuropsychological outcomes of army personnel following deployment to the Iraq war. *Jama*, 296, 519–529.
- Veltmeyer, M.D., Clark, C.R., McFarlane, A.C., Felmingham, K.L., Bryant, R.A., & Gordon, E. (2005). Integrative assessment of brain and cognitive function in post-traumatic stress disorder. *Journal of Integrated Neuroscience*, 4, 145–159.
- Viano, D.C., Casson, I.R., Pellman, E.J., Bir, C.A., Zhang, L., Sherman, D.C., & Boitano, M.A. (2005a). Concussion in professional football: Comparison with boxing head impacts—part 10. *Neurosurgery*, 57, 1154–1172; discussion 1154–1172.
- Viano, D.C., Casson, I.R., Pellman, E.J., Zhang, L., King, A.I., & Yang, K.H. (2005b). Concussion in professional football: Brain responses by finite element analysis: Part 9. *Neurosurgery*, 57, 891–916; discussion 891–916.
- Vick, N.A. (1976). *Grinker's Neurology*. Springfield, IL: Charles C. Thomas.
- Vorst, M.V., Ono, K., Chan, P., & Stuhmiller, J. (2007). Correlates to traumatic brain injury in nonhuman primates. *Journal of Trauma*, 62, 199–206.

- Vos, P.E., Battistin, L., Birbamer, G., Gerstenbrand, F., Potapov, A., Prevec, T., Stepan Ch, A., Traubner, P., Twijnstra, A., Vecsei, L., & von Wild, K. (2002). EFNS guideline on mild traumatic brain injury: Report of an EFNS task force. *European Journal of Neurology*, 9, 207–219.
- Wall, S.E., Williams, W.H., Cartwright-Hatton, S., Kelly, T.P., Murray, J., Murray, M., Owen, A., & Turner, M. (2006). Neuropsychological dysfunction following repeat concussions in jockeys. *Journal of Neurology Neurosurgery and Psychiatry*, 77, 518–520.
- Ward, N.S., Oakley, D.A., Frackowiak, R.S., & Halligan, P.W. (2003). Differential brain activations during intentionally simulated and subjectively experienced paralysis. *Cognitive Neuropsychiatry*, 8, 295–312.
- Warden, D. (2006). Military TBI during the Iraq and Afghanistan wars. *Journal of Head Trauma and Rehabilitation*, 21, 398–402.
- Warden, D.L. & French, L. (2005). Traumatic brain injury in the war zone. *New England Journal of Medicine*, 353, 633–634.
- Weiss, H.D., Stern, B.J., & Goldberg, J. (1991). Post-traumatic migraine: Chronic migraine precipitated by minor head or neck trauma. *Headache*, 31, 451–456.
- Whittaker, R., Kemp, S., & House, A. (2007). Illness perceptions and outcome in mild head injury: A longitudinal study. *Journal of Neurology Neurosurgery and Psychiatry*, 78, 644–646.
- Wilde, E.A., Bigler, E.D., Haider, J.M., Chu, Z., Levin, H.S., Li, X., & Hunter, J.V. (2006a). Vulnerability of the anterior commissure in moderate to severe pediatric traumatic brain injury. *Journal of Child Neurology*, 21, 769–776.
- Wilde, E.A., Bigler, E.D., Hunter, J.V., Fearing, M.A., Scheibel, R.S., Newsome, M.R., Johnson, J.L., Bachevalier, J., Li, X., & Levin, H. (2007). Hippocampus, amygdala, and basal ganglia morphometrics in children after moderate-to-severe traumatic brain injury. *Developmental Medicine & Child Neurology*, 49, 294–299.
- Wilde, E.A., Bigler, E.D., Pedroza, C., & Ryser, D.K. (2006b). Post-traumatic amnesia predicts long-term cerebral atrophy in traumatic brain injury. *Brain Injury*, 20, 695–699.
- Wilde, E.A., Chu, Z., Bigler, E.D., Hunter, J.V., Fearing, M.A., Hanten, G., Newsome, M.R., Scheibel, R.S., Li, X., & Levin, H.S. (2006c). Diffusion tensor imaging in the corpus callosum in children after moderate to severe traumatic brain injury. *Journal of Neurotrauma*, 23(10), 1412–1426.
- Wilde, E.A., McCauley, S.R., Hunter, J.V., Bigler, E.D., Chu, Z., Wang, J., Hanten, G.R., Toyanskaya, M., Yallampalli, R., Li, X., Chia, J. & Levin, H.S. (in press). Diffusion tensor imaging of acute mild traumatic brain injury. *Neurology*.
- Willer, B. & Leddy, J.J. (2006). Management of concussion and post-concussion syndrome. *Current Treatment Options in Neurology*, 8, 415–426.
- Wood, P.B. (2005). Neuroimaging in functional somatic syndromes. *International Reviews in Neurobiology*, 67, 119–163.
- Wood, R.L. (2004). Understanding the “miserable minority”: A diathesis-stress paradigm for post-concussional syndrome. *Brain Injury*, 18, 1135–1153.
- Wood, R.L. (2007). Post concussional syndrome: All in the minds eye! *Journal of Neurology Neurosurgery and Psychiatry*, 78, 552.
- Wood, R.L. & Lioffi, C. (2006). The ecological validity of executive tests in a severely brain injured sample. *Archives in Clinical Neuropsychology*, 21, 429–437.
- Wright, C.I., Williams, D., Feczko, E., Barrett, L.F., Dickerson, B.C., Schwartz, C.E., & Wedig, M.M. (2006). Neuroanatomical correlates of extraversion and neuroticism. *Cerebral Cortex*, 16, 1809–1819.
- Yoshiyama, Y., Uryu, K., Higuchi, M., Longhi, L., Hoover, R., Fujimoto, S., McIntosh, T., Lee, V.M., & Trojanowski, J.Q. (2005). Enhanced neurofibrillary tangle formation, cerebral atrophy, and cognitive deficits induced by repetitive mild brain injury in a transgenic tauopathy mouse model. *Journal of Neurotrauma*, 22, 1134–1141.
- Zasler, N.D., Katz, D.I., & Zafonte, R.D. (2007). *Brain Injury Medicine*. New York: Demos Medical Publishing.
- Zetterberg, H., Hietala, M.A., Jonsson, M., Andreasen, N., Styrd, E., Karlsson, I., Edman, A., Popa, C., Rasulzada, A., Wahlund, L.O., Mehta, P.D., Rosengren, L., Blennow, K., & Wallin, A. (2006). Neurochemical aftermath of amateur boxing. *Archives in Neurology*, 63, 1277–1280.
- Zhang, J., Yoganandan, N., Pintar, F.A., & Gennarelli, T.A. (2006a). Role of translational and rotational accelerations on brain strain in lateral head impact. *Biomedical Sciences Instrumentation*, 42, 501–506.
- Zhang, L., Heier, L.A., Zimmerman, R.D., Jordan, B., & Ulug, A.M. (2006b). Diffusion anisotropy changes in the brains of professional boxers. *AJNR American Journal of Neuroradiology*, 27, 2000–2004.
- Zhu, Q., Prange, M., & Margulies, S. (2006). Predicting unconsciousness from a pediatric brain injury threshold. *Developmental Neuroscience*, 28, 388–395.
- Ziino, C. & Ponsford, J. (2006). Selective attention deficits and subjective fatigue following traumatic brain injury. *Neuropsychology*, 20, 383–390.
- Zohar, O., Getslev, V., Miller, A.L., Schreiber, S., & Pick, C.G. (2006). Morphine protects for head trauma induced cognitive deficits in mice. *Neuroscience Letters*, 394, 239–242.
- Zohar, O., Schreiber, S., Getslev, V., Schwartz, J.P., Mullins, P.G., & Pick, C.G. (2003). Closed-head minimal traumatic brain injury produces long-term cognitive deficits in mice. *Neuroscience*, 118, 949–955.
- Zumsteg, D., Wennberg, R., Gutling, E., & Hess, K. (2006). Whiplash and concussion: similar acute changes in middle-latency SEPs. *Canadian Journal of Neurological Science*, 33, 379–386.