

INFECTION CONTROL AND HOSPITAL EPIDEMIOLOGY[®]

EDITORIAL

- Legionella Disinfection of Water Distribution Systems: Principles, Problems, and Practice 567
VICTOR L. YU, MD; ZEMING LIU, MS; JANET E. STOUT, SCD; ANGELLA GOETZ, RN, MNED

ORIGINAL ARTICLES

- Prevention of Legionella Infections in a Bone Marrow Transplant Unit: Multifaceted Approach to Decontamination of a Water System 571
URSULA MATULONIS, MD; CRAIG S. ROSENFELD, MD; RICHARD K. SHADDUCK, MD
- Nosocomial Outbreak of Pseudomonas cepacia Associated with Contamination of Reusable Electronic Ventilator Temperature Probe 583
J. JOHN WEEMS, JR., MD

BRIEF REPORTS

- Infection with Methicillin-Resistant Staphylococcus aureus Among Hospital Employees 576
ROBERT R. MUDER, MD; CAROLE BRENNEN, RN, MSN; ANGELLA M. GOETZ, RN, MNED
- Association Between Climate and Enterobacter Colonization in Swedish Neonatal Units 579
BIRGITTA A. FRYKLUND, RN; KJELL TULLUS, MD, PHD; LARS G. BURMAN, MD, PHD
- Outbreak of Candida tropicalis Fungemia in a Neonatal Intensive Care Unit 587
R. FINKELSTEIN, MD; G. REINHERTZ, BA; N. HASHMAN, BSC; D. MERZBACH, PHD

TOPICS IN LONG-TERM CARE

- Tetanus and Tetanus Immunization in Long-Term Care Facilities 591
JAMES P. RICHARDSON, MD

MOLECULAR HOSPITAL EPIDEMIOLOGY

- Molecular Epidemiology of Nosocomial Infection: Analysis of Chromosomal Restriction Fragment Patterns by Pulsed-Field Gel Electrophoresis 595
RICHARD V. GOERING, PHD

LETTERS TO THE EDITOR

- New ASTM Barrier Test Methods 561
NATHAN L. BELKIN, PHD
- Guaiac Testing of IV Lines (with Response) 562
PAMELA PATRICK; FARRIN A. MANIAN, MD, MPH; LYNN MEYER, RN, MPH, CIC; JOAN JENNE, RN, CIC
- Port-a-Cath Needlestick Injuries 562
YON FLEERACKERS; ROBERT COLEBUNDERS; JO VAN BROECKHOVEN; KOEN VAN DEN ABBEELE
- Biological Indicators for a Liquid Chemical Sterilizer (with Response) 563
PAUL S. MALCHESKY, DENG; WALTER W. BOND, MS; MICHAEL D. DECKER, MD, MPH

BOOKREVIEW 601

MEDICAL NEWS 605

GINA PUGLIESE, RN, MS

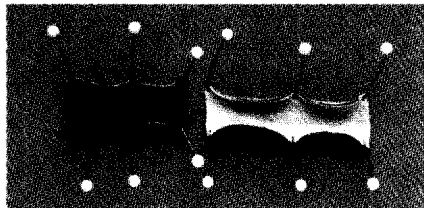
SHEA NEWS 611

You May Not Realize The Scope Of The Problem.



**When it comes to processing endoscopes,
the inside is just as important as the outside.**

*Biopsy channel section
after repeated processing
in glutaraldehyde.*



*Same channel after 5
STERIS PROCESS cycles.*

You can't see the inside of your scope after processing. What remains inside may surprise you.

Glutaraldehyde cross-links proteins. Organic residues can be affixed to surfaces, potentially leading to contaminated channels and/or reduced optical clarity.

Conversely, the STERIS PROCESS uses STERIS 20™ – a patented formulation of peracetic acid (a strong oxidizer and biocide), detergents, buffers, and anti-corrosives. This formulation, along with the directed flow of the STERIS SYSTEM 1 Processor, makes the STERIS PROCESS effective at reaching contaminated surfaces without promoting organic buildup.

Write or call us today to find out why thousands of health professionals use the proven, rapid, and safe sterile processing of STERIS SYSTEM 1.

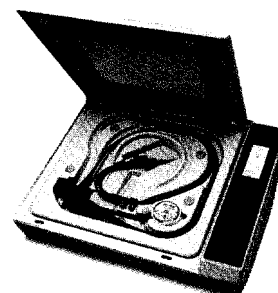
**The STERIS PROCESS
The Proven Process
Just In Time**

STERIS®



STERIS CORPORATION
9450 Pineneedle Drive ■ Mentor, OH 44060

1-800-JIT-4-USE (1-800-548-4873)



INFECTION CONTROL AND HOSPITAL EPIDEMIOLOGYTM

CONTENTS

EDITORIAL

- Legionella* Disinfection of Water Distribution Systems: Principles, Problems, and Practice 567

VICTOR L. YU, MD; ZEMING LIU, MS; JANET E. STOUT, SCD;
ANGELLA GOETZ, RN, MNEd

ORIGINAL ARTICLES

- Prevention of *Legionella* Infections in a Bone Marrow Transplant Unit: Multifaceted Approach to Decontamination of a Water System 571

URSULA MATULONIS, MD; CRAIG S. ROSENFELD, MD; RICHARD K. SHADDUCK, MD

- Nosocomial Outbreak of *Pseudomonas cepacia* Associated with Contamination of Reusable Electronic Ventilator Temperature Probes 583

J. JOHN WEEMS, JR., MD

BRIEF REPORTS

- Infection with Methicillin-Resistant *Staphylococcus aureus* Among Hospital Employees 576

ROBERT R. MUDER, MD; CAROLE BRENNEN, RN, MSN; ANGELLA M. GOETZ, RN, MNEd

- Association Between Climate and *Enterobacter* Colonization in Swedish Neonatal Units 579

BIRGITTA A. FRYKLUND, RN; KJELL TULLUS, MD, PHD; LARS G. BURMAN, MD, PHD

- Outbreak of *Candida tropicalis* Fungemia in a Neonatal Intensive Care Unit 587

R. FINKELSTEIN, MD; G. REINHERTZ, BA; N. HASHMAN, BSC; D. MERZBACH, PHD

TOPICS IN LONG-TERM CARE

- Tetanus and Tetanus Immunization in Long-Term Care Facilities 591

JAMES P. RICHARDSON, MD

MOLECULAR HOSPITAL EPIDEMIOLOGY

- Molecular Epidemiology of Nosocomial Infection: Analysis of Chromosomal Restriction Fragment Patterns by Pulsed-Field Gel Electrophoresis 595

RICHARD V. GOERING, PhD

DEPARTMENTS

- Letters to the Editor 561

- Book Review 601

- Information for Authors 602

- Medical News 605

- SHEA News 611

THE PUBLICATION OF ADVERTISING IN THE JOURNAL DOES NOT CONSTITUTE ANY GUARANTEE OR ENDORSEMENT BY THE SOCIETY FOR HOSPITAL EPIDEMIOLOGY OF AMERICA OR SLACK INCORPORATED OF THE ADVERTISED PRODUCT OR SERVICE OR OF CLAIMS MADE BY THE ADVERTISER. THE PUBLICATION OF ARTICLES AND OTHER EDITORIAL MATERIAL IN THE JOURNAL DOES NOT NECESSARILY REPRESENT THE POLICY RECOMMENDATIONS OR ENDORSEMENT BY THE SOCIETY.

PUBLISHER Infection Control and Hospital Epidemiology (ISSN-0899-823X, Canadian GST#129780466) is published exclusively by SLACK Incorporated 12 times a year. Address: 6900 Grove Rd., Thorofare, NJ 08086. Telephone: (609) 8481000.

COPYRIGHT 1993 The Society for Hospital Epidemiology of America, Inc., and SLACK Incorporated. All rights reserved. No part of this publication may be reproduced without written permission from the publisher. Printed in the USA.

SUBSCRIPTIONS: Requests should be addressed to the publisher (except Japan). In Japan, contact Woodbell Incorporated, 4-22-11, Kitakasai, Edogawaku, Tokyo 134, Japan. Subscription rates in the United States and possessions: Individual: One year—\$80.00; Two years—\$115.00; Three years—\$145.00; Institutional: One year—\$90.00; Two years—\$130.00; Three years—\$170.00. Fellows: \$20 per year with proof of training status. Canada: \$18.00 additional each year plus 7% for Canadian Goods & Services tax; all other countries: \$36.00 additional each year. Single copies of current issues may be obtained for \$15.00, United States and possessions; \$20.00 all other countries.

REPRINTS: All requests to reprint or use material published herein should be addressed to Lester Robeson, SLACK Incorporated, 6900 Grove Rd., Thorofare, NJ 08086. For reprint orders and prices, contact Lester Robeson at (609) 848-1000. Authorization to photocopy items for internal or personal use, or the internal or personal use of specific clients, is granted by SLACK Incorporated, provided that the base fee of \$1.00 per copy, plus \$.15 per page is paid directly to Copyright Clearance Center, 27 Congress St., Salem, MA 01970. This consent does not extend to other kinds of copying, such as for general distribution, resale, advertising and promotional purposes, or for creating new collective works.

CHANGE OF ADDRESS: Notice should be sent to the publisher six weeks in advance of effective date. Include old and new addresses with zip codes. The publisher cannot accept responsibility for undelivered copies. Second-class postage is paid at Thorofare, New Jersey 08086, and additional entry points. **POSTMASTER:** Send address changes to SLACK Incorporated, 6900 Grove Rd., Thorofare, NJ 08086.

INFECTION CONTROL AND HOSPITAL EPIDEMIOLOGY is listed in Index Medicus, Current Contents-Clinical Practice, Hospital Literature Index, Cumulative Index to Nursing & Allied Health Literature, Nursing Abstracts, and Laboratory Performance Information Exchange System.

EDITORIAL OFFICES

Vanderbilt University School of Medicine
A-1131 Medical Center North
Nashville, TN 37232-2637
(615) 343-1095; (615) 343-1882 (FAX)
Email: iche@mcmail.vanderbilt.edu

EDITOR

Michael D. Decker, MD, MPH

MANAGING EDITOR

Susan Cantrell

STATISTICAL EDITOR

Beverly G. Mellen, PhD

SENIOR ASSOCIATE EDITORS

C. Glen Mayhall, MD

Gina Pugliese, RN, MS

William Schaffner, MD

ASSOCIATE EDITORS

Donald A. Goldmann, MD

Didier Pittet, MD, MS

Andreas Widmer, MD, MS

SECTION EDITORS

Beyond Infection Control:

The New Hospital Epidemiology

Bryan P. Simmons, MD

Stephen B. Kritchevsky, PhD

Memphis, Tennessee

Wing Hong Seto, MD

Hong Kong

Disinfection and Sterilization

William A. Rutala, PhD, MPH

Chapel Hill, North Carolina

Emerging Infectious Diseases

Larry J. Strausbaugh, MD

Portland, Oregon

Robert W. Pinner, MD

Atlanta, Georgia

From the Laboratory

Marcus Zervos, MD

Royal Oak, Michigan

Fred C. Tenover, PhD

Atlanta, Georgia

Information Management

John A. Sellick, DO

Buffalo, New York

The International Perspective

Mary D. Nettleman, MD, MS

Richmond, Virginia

Issues in Surgery

James T. Lee, MD, PhD

St. Paul, Minnesota

Medical News

Gina Pugliese, RN, MS

Chicago, Illinois

Martin S. Favero, PhD

Irvine, California

Practical Healthcare Epidemiology

Loreen A. Herwaldt, MD

Iowa City, Iowa

SHEA News

Murray D. Batt, MD

Clarksburg, West Virginia

Statistics for Hospital Epidemiology

David Birnbaum, PhD, MPH

Sidney, British Columbia, Canada

Topics in Long-Term Care

Philip W. Smith, MD

Omaha, Nebraska

Topics in Occupational Medicine

David Weber, MD, MPH

Chapel Hill, North Carolina

INFECTION CONTROL AND HOSPITAL EPIDEMIOLOGY®

EDITORIAL ADVISORY BOARD

Jacques F. Acar, MD	Paris, France
J. Wesley Alexander, MD	Cincinnati, Ohio
Paul Arnow, MD	Chicago, Illinois
Graham A.J. Ayliffe, MD	Birmingham, United Kingdom
Neil L. Barg, MD	Yakima, Washington
Elizabeth Ann Bolyard, RN, MPH, CIC	Atlanta, Georgia
John M. Boyce, MD	Providence, Rhode Island
Professor Dr. Ilja Braveny	Munich, Federal Republic of Germany
Charles Bryan, MD	Columbia, South Carolina
Christian Brun-Buisson, MD	Creteil, France
Donald E. Craven, MD	Boston, Massachusetts
Sue Crow, MSN, RN, CIC	Shreveport, Louisiana
Franz Daschner, MD	Freiburg, Federal Republic of Germany
Leigh G. Donowitz, MD	Charlottesville, Virginia
Charles E. Edmiston, Jr., PhD	Milwaukee, Wisconsin
Theodore C. Eickhoff, MD	Denver, Colorado
Bruce Farber, MD	Manhasset, New York
Victoria J. Fraser, MD	St. Louis, Missouri
Peter C. Fuchs, MD, PhD	Black Butte, Oregon
Richard A. Garibaldi, MD	Farmington, Connecticut
Velvl Greene, PhD, MPH	Beer Sheva, Israel
Robert Gaynes, MD	Atlanta, Georgia
David W. Gregory, MD	Nashville, Tennessee
David K. Henderson, MD	Bethesda, Maryland
Peter N.R. Heseltine, MD	Los Angeles, California
Karen Hoffmann, RN, CIC, MS	Chapel Hill, North Carolina
Marguerite McMillan Jackson, RN, PhD	San Diego, California
Janine Jagger, MPH, PhD	Charlottesville, Virginia
William R. Jarvis, MD	Atlanta, Georgia
Douglas S. Kernodle, MD	Nashville, Tennessee
Robert H. Latham, MD	Nashville, Tennessee
Lewis B. Lefkowitz, MD	Nashville, Tennessee
Hsieh-Shong Leu, MD, MSc	Taipei, Taiwan
Jack Levy, MD	Brussels, Belgium
Victor Lorian, MD	Bronx, New York
Dennis G. Maki, MD	Madison, Wisconsin
Professor Dr. Walter Marget	Munich, Federal Republic of Germany
William J. Martone, MD	Bethesda, Maryland
Allison McGeer, MD	Toronto, Ontario, Canada
John E. McGowan, Jr., MD	Atlanta, Georgia
Jonathan L. Meakins, MD, DSc	Montreal, Quebec, Canada
Raf Mertens, MD	Brussels, Belgium
Robert R. Muder, MD	Pittsburgh, Pennsylvania
Joseph M. Mylotte, MD, CIC	Buffalo, New York
Lindsay Nicolle, MD	Winnipeg, Manitoba, Canada
Juhani Ojajarvi, MD	Helsinki, Finland
Michael T. Osterholm, PhD, MPH	Minneapolis, Minnesota
Jan Evans Patterson, MD	San Antonio, Texas
Sindy M. Paul, MD	Trenton, New Jersey
Michael A. Pfaller, MD	Iowa City, Iowa
Samuel Ponce de Leon, MD, MSc	Mexico City, Mexico
Isaam Raad, MD	Houston, Texas
Manfred L. Rotter, MD, DipBact	Vienna, Austria
Theodore Sacks, MD	Jerusalem, Israel
William E. Scheckler, MD	Madison, Wisconsin
Kent Sepkowitz, MD	New York City, New York
Denis Spelman, MD	Prahran Victoria, Australia
Michael L. Tapper, MD	New York, New York
Clyde Thornsberry, PhD	Brentwood, Tennessee
Professor Leonid P. Titov	Minsk, Republic of Belarus
Timothy R. Townsend, MD	Millwood, Virginia
Antoni Trilla, MD, PhD	Barcelona, Spain
Professor Wang Shu-Qun	Beijing, People's Republic of China
J. John Weems, Jr., MD	Greenville, South Carolina
Robert A. Weinstein, MD	Chicago, Illinois
Professor Dr. W. Weuffen	Greifswald, Federal Republic of Germany
Sergio B. Wey, MD	São Paulo, Brazil
Rebecca Wurtz, MD	Evanston, Illinois

SLACK Incorporated

6900 Grove Road
Thorofare, New Jersey 08086
(609) 848-1000

Vice President/Group Publisher

Richard N. Roash

Publisher

John C. Carter

Editorial Director

Jennifer Kilpatrick

Production Editor

Shirley P. Strunk, ELS

Assistant Editor

Eileen C. Anderer

Circulation Manager

Lester J. Robeson, CCCP

Production Director

Christine Malin

Production Coordinator

Joanne Patterson

Publishing Director/ Advertising

Wayne McCourt

Pharmaceutical Group Sales Director

Michael LoPresti

Advertising Sales Representative

Jennine Kane

Classified/Recruitment Sales Manager

Michele Burch

Techni-CareTM Surgical Scrub

99.99% Bacterial Reduction
in only 30 seconds

Techni-Care...A new technology in a surgical scrub exhibits outstanding antimicrobial efficacy *without* dermal irritation.

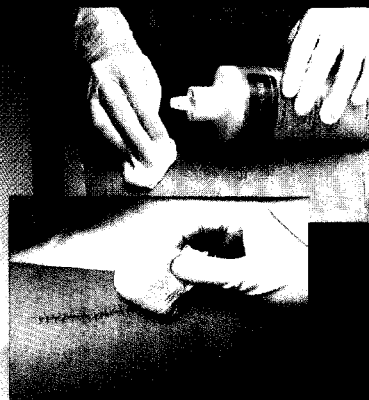
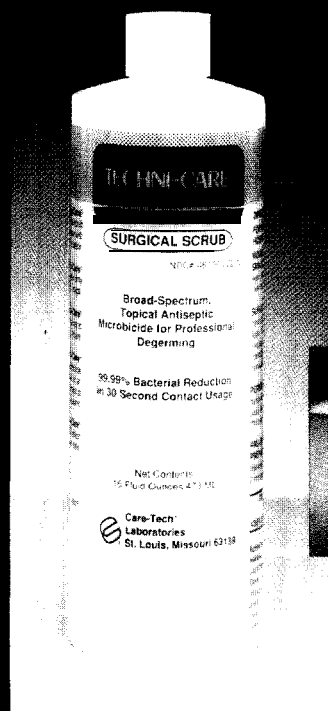
Fully substantiated by independent testing in vivo and in vitro, Techni-Care Surgical Scrub both disinfects and conditions in less time than any prior technology available to healthcare personnel.

Results of Time Kill tests demonstrate that Techni-Care eliminates gram negative and gram positive bacteria at 99.99% in 30 second contact.

Outstanding Bactericidal Activity without skin irritation

Techni-Care's active ingredient, chloroxylonol (PCMX) at 3%, eliminates bacteria, while a host of skin conditioning agents work synergistically to condition and soften the skin. Exceptionally mild, Techni-Care's dermal conditioning ingredients, include cocamidopropyl PG-Dimonium Chloride Phosphate, Aloe Vera Gel, Collagen and Propylene Glycol.

Techni-Care has rated a "minimal irritation" in the Draize Dermal irritation test. Specially blended formulation for dermal conditioning, as well as for bacterial reduction. Techni-Care Surgical Scrub is soothing to dermal tissue while phospholipids promote natural turgor.



CARE-TECH[®] LABORATORIES

Advanced Skin Care Technology

1-800-325-9681

SHEA

Annual Luncheon

TUESDAY, OCTOBER 19, 1993

12:00 – 2:00 PM

**NEW ORLEANS HILTON RIVERSIDE AND TOWERS
NEW ORLEANS, LA**

The Society for Hospital Epidemiology of America will host its Annual Luncheon during the Interscience Conference on Antimicrobial Agents and Chemotherapy (ICAAC) at the New Orleans Hilton.

FEATURED LUNCHEON SPEAKER

Michael T. Osterholm, Ph.D. M.P.H.

State Epidemiologist & Chief, Minnesota Department of Health

Topic: Partners and Pump Handles

COST: \$40

No advanced reservations will be accepted after October 5, 1993

Limited number of tickets available on site -Reserve Now!

Registration Form

PLEASE PRINT OR TYPE NAME(S) _____

STREET _____ CITY _____ STATE _____ ZIP _____

Enclosed is payment to cover advanced registration for each person listed above.

\$_____ Total Payment

Make checks payable in US. dollars to: The Society for Hospital Epidemiology of America, Inc.

PAYMENT METHOD: Check ☐ Credit Card: Visa ☐ MasterCard ☐ Please note we cannot process American Express.

Account No. _____ Expiration Date _____ Signature _____

Send Remittance To:

***SHEA Annual Luncheon
875 Kings Highway, Suite 200
Woodbury, NJ 080963172
609-845-1 636
609-853-041 I FAX***



Please indicate any disability which will require special assistance:

Unless SHEA is advised prior to luncheon of any special requirements due to disability, we cannot guarantee that service will be available if requested on-site.