

INFECTION CONTROL AND HOSPITAL EPIDEMIOLOGYTM

EDITORIAL

Pediatric Nosocomial Infections: Children Are Not Little Adults

JO-ANN S. HARRIS, MD

739

ORIGINAL ARTICLES

Molecular Markers for Differentiation of Multiresistant *Klebsiella pneumoniae* Isolates in a Pediatric Hospital

SYLVIE LHOPITAL, PhD; STEPHANE BONACORSI, MD; DANIELE MEIS, BSc; NAIMA BRAHIMI, BSc; STEPHANIE MATHY, BSc; JEAN NAVARRO, MD; YVES AIGRAN, MD; EDOUARD BINGEN, PhD

743

Nosocomial Pneumonia on General Medical and Surgical Wards in a Tertiary-Care Hospital

CHRISTINA A. GREENWAY, MD; JOHN EMBRIL, MD; PAMELA H. ORR, MD; JUDITH MCLEOD, RN; BRENDA DYCK, RN; LINDSAY E. NICOLLE, MD

749

Risk Factors Associated With Permanent Access-Site Infections in Chronic Hemodialysis Patients

ROBERT A. BONOMO, MD; DORA RICE, RN, MSN; CHRISTOPHER WHALEN, MD, MS; DAVID LINN, PA-C, AAS; ELIZABETH EXKSTEIN, RN, MSN; DAVID M. SHLAES, MD, PhD

757

CONCISE COMMUNICATIONS

The Epidemiology of Fecal Carriage of Vancomycin-Resistant Enterococci

KWAN KEW LAI, DMD, MD; SALLY A. FONTECCHIO, RN, BSN, CIC; ANITA L. KELLEY, RN, MSN, CIC; ZITA S. MELVIN, RN, BSN, CIC; STEPHEN BAKER, PhD

762

Living with Methicillin-Resistant *Staphylococcus aureus*: A 7-Year Experience With Endemic MRSA in a University Hospital

FOLORUNSO A.B. ADEYEMI-DORO, MD; OLAF SCHEEL, MD; DONALD J. LYON, MD; AUGUSTINE F.B. CHENG, MD, PhD

765

Prescribing Pattern of Vancomycin in a Community Teaching Hospital with Low Prevalence of Vancomycin-Resistant Enterococci

CHATRCHAI WATANAKUNAKORN, MD

767

Ribotyping and Random Amplification of Polymorphic DNA for Nosocomial *Enterobacter cloacae* Isolates in a Pediatric Intensive Care Unit

SHIH-TING HOU, MD; CHIH-CHIEN WANG, MD, PhD; MONG-LING CHU, MD

769

Epidemiological Study of Hospital-Acquired Infection With Vancomycin-Resistant *Enterococcus faecium*: Possible Transmission by an Electronic Ear-Probe Thermometer

RICHARD PORWANCHER, MD; ANISH SHETH; SUSAN REMPHREY, BS; EILEEN TAYLOR, RN; CYNTHIA HINKLE, RN; MARCUS ZERVOS, MD

771

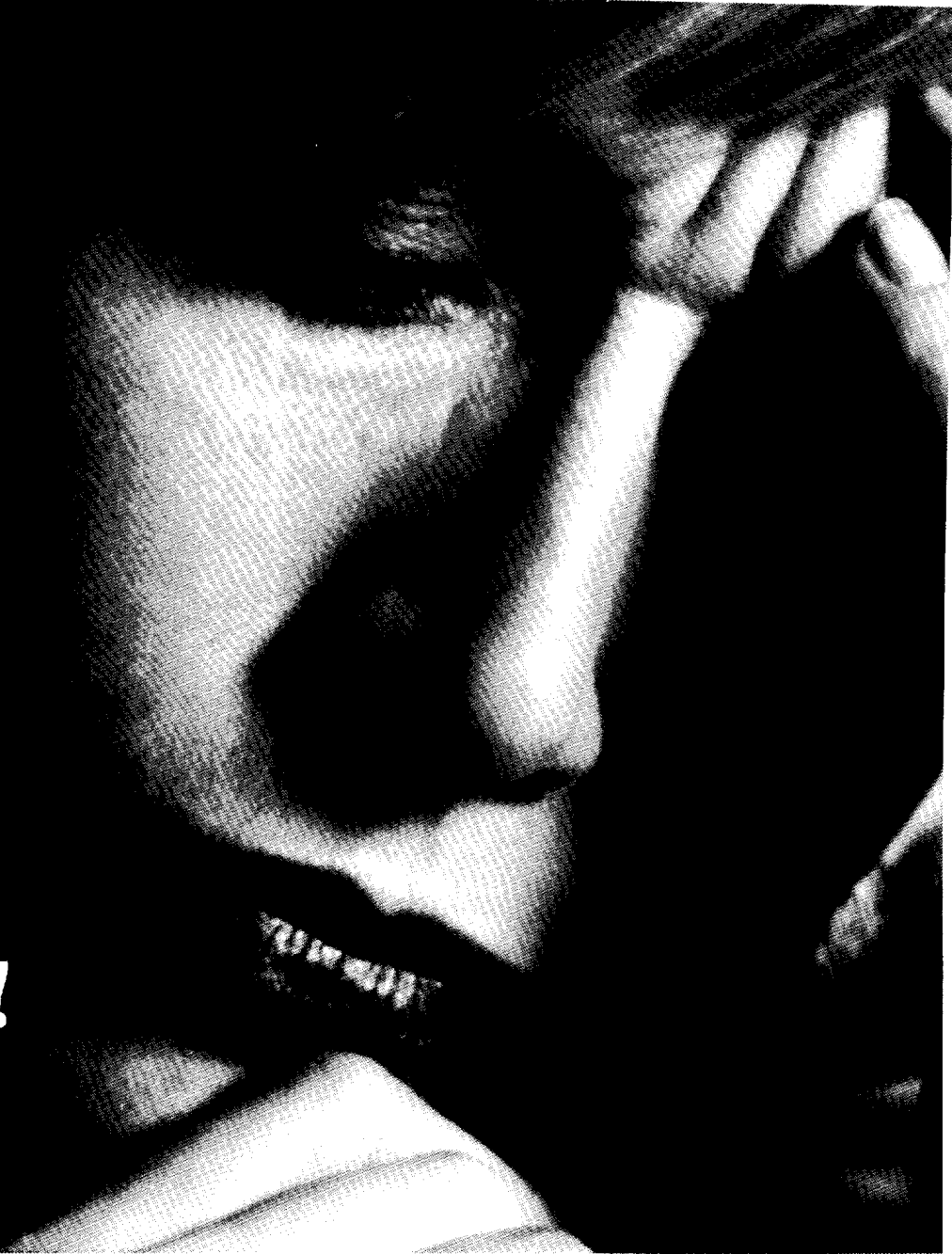
A Cluster of Serious *Escherichia coli* Infections in a Neonatal Intensive Care Unit

DANIEL J. DIEKEMA, MD, MS; JOAN BARR, LPN; LINDA D. BOYKEN, BA; BARRY J. BUSCHELMAN, BS; RONALD N. JONES, MD; MICHAEL A. PFALLER, MD; LOREEN A. HERWALDT, MD

774

Continued inside.

You Need
To Know
Now,
Because
Now Is
When It
Happened!



It happened, and now you want to know
the HIV status of the source.

Based on the new CDC guidelines;
counseling, testing and treatment
(if necessary) should be provided within
two hours. Can your hospital meet the
guidelines for testing?

If not, the **SUDS HIV-1 Test**
(a 10 minute EIA) can assist your hospital in

murex
Products. People. Perfect.®

INFECTION CONTROL AND HOSPITAL EPIDEMIOLOGY[®]

CONTENTS

Continued from cover

Cumulative Yield From Patient Surveillance Cultures for Methicillin-Resistant <i>Staphylococcus aureus</i> During a Hospital Outbreak Kevin R. Forward, MD; Judy C. Arbique, ART	776
Rate of Seasonal Spread of Respiratory Syncytial Virus in a Pediatric Hospital Mary-Louise McLaws, DTPH, MPH, PhD; Cathryn Murphy, MPH; Peter Taylor, MB, BS; Mark Ferson, MB, BS, MPH; Julian Gold, MB, BS; Robyn Donnellan, RN; Dianne Dalton, RN	778
Evaluation of Vancomycin Use in a Pediatric Teaching Hospital Based on CDC Criteria Beth A. Logsdon, PharmD; Kelley R. Lee, PharmD; Gary Luedtke; Fred F. Barrett, MD	780
BOOKS RECEIVED	748
PRACTICAL HEALTHCARE EPIDEMIOLOGY	
Hospital-Acquired Pneumonia: Perspectives for the Healthcare Epidemiologist Donald E. Craven, MD; Kathleen A. Steger, RN, MPH	783
MEDICAL NEWS	
Gina Pugliese, RN, MS; Martin S. Favero, PhD	
Outbreak of Mycoplasma Pneumonia	782
Outbreak of Highly Contagious Tuberculosis	796
Disease Transmitted Through Food Supply	796
Antiseptic- and Antimicrobial-Coated Catheters Reduce Bloodstream Infection Risk	796
Sepsis Varies With Patient Population	797
PCR-A Cost-Effective Alternative for VRE Screening	797
National Guidelines Control Antibiotic Use-Finland	798
SHEA NEWS	
Murray D. Batt, MD	800

To view abstracts of these articles,
visit us on the Internet at <http://www.slackinc.com/general/iche>

THE PUBLICATION OF ADVERTISING IN THE JOURNAL DOES NOT CONSTITUTE ANY GUARANTEE OR ENDORSEMENT BY THE SOCIETY FOR HEALTHCARE EPIDEMIOLOGY OF AMERICA OR SLACK INCORPORATED OF THE ADVERTISED PRODUCT OR SERVICE OR OF CLAIMS MADE BY THE ADVERTISER. THE PUBLICATION OF ARTICLES AND OTHER EDITORIAL MATERIAL IN THE JOURNAL DOES NOT NECESSARILY REPRESENT THE POLICY RECOMMENDATIONS OR ENDORSEMENT BY THE SOCIETY.

PUBLISHER: Infection Control and Hospital Epidemiology (ISSN-0899-823X, Canadian GST#129780466) is published exclusively by SLACK Incorporated 12 times a year. Address: 6900 Grove Rd., Thorofare, NJ 08086. Telephone: (609) 848-1000.

COPYRIGHT 1997 The Society for Healthcare Epidemiology of America, Inc., and SLACK Incorporated. All rights reserved. No part of this publication may be reproduced without written permission from the publisher. Printed in the USA.

SUBSCRIPTIONS: Requests should be addressed to the publisher (except Japan). In Japan, contact Woodbell Incorporated, 4-22-11, Kitakasai, Edogawaku, Tokyo 134, Japan. Subscription rates in the United States and possessions: Individual: One year-\$98.00; Two years-\$136.00; Three years-\$169.00; Institutional: One year-\$120.00; Two years-\$170.00; Three years-\$220.00. Fellows: \$49 per year with proof of training status. Canada: \$19.00 additional each year plus 7% for Canadian Goods & Services tax; all other countries: \$38.00 additional each year. Overseas surface, \$84.00 each year overseas air mail. Single copies of current issues may be obtained for \$15.00. United States and possessions; \$20.00 all other countries.

INSTRUCTIONS TO AUTHORS: Authors may submit manuscripts prepared in accordance with the 1997 revision of the "Uniform Requirements for Manuscripts Submitted to Biomedical Journals." The Uniform Requirements has been published in several journals, including *Infect Control Hosp Epidemiol* 1997;18:457-464 and *Ann Intern Med* 1997;126:36-47. A digital version is available on our web site (<http://www.slackinc.com/general/iche/ichehome.htm>). Submit to "ICHE Editorial Offices, Vanderbilt University School of Medicine, A-1131 Medical Center North, Nashville, TN 37232-2637, USA."

REPRINTS: All requests to reprint or use material published herein should be addressed to Jennifer McGovern, SLACK Incorporated, 6900 Grove Rd., Thorofare, NJ 08086. For reprint orders and prices, contact Jennifer McGovern at (609) 848-1000. Authorization to photocopy items for internal or personal use, or the internal or personal use of specific clients, is granted by SLACK Incorporated, provided that the base fee of \$1.00 per copy, plus \$1.50 per page is paid directly to Copyright Clearance Center, 27 Congress St., Salem, MA 01970. This consent does not extend to other kinds of copying, such as for general distribution, resale, advertising and promotional purposes, or for creating new collective works.

CHANGE OF ADDRESS: Notice should be sent to the publisher six weeks in advance of effective date. Include old and new addresses with zip codes. The publisher cannot accept responsibility for undelivered copies. Periodicals postage paid at Thorofare, New Jersey 08086-9447 and at additional mailing offices. POSTMASTER: Send address changes to SLACK Incorporated, 6900 Grove Rd., Thorofare, NJ 08086.

INFECTION CONTROL AND HOSPITAL EPIDEMIOLOGY is listed in Index Medicus, Current Contents-Clinical Practice, Hospital Literature Index, Cumulative Index to Nursing & Allied Health Literature, Nursing Abstracts, Laboratory Performance Information Exchange System, and RNDex Top 100.

EDITORIAL OFFICES

Vanderbilt University School of Medicine
A-1131 Medical Center North
Nashville, TN 37232-2637
(615) 343-1095; (615) 343-1882 (FAX)
Email: iche@mcmail.vanderbilt.edu

EDITOR

Michael D. Decker, MD, MPH

MANAGING EDITOR

Susan Cantrell

STATISTICAL EDITOR

Beverly G. Mellen, PhD

SENIOR ASSOCIATE EDITORS

C. Glen Mayhall, MD

Gina Pugliese, RN, MS

William Schaffner, MD

ASSOCIATE EDITORS

Donald A. Goldmann, MD

Didier Pittet, MD, MS

Andreas Widmer, MD, MS

SECTION EDITORS

Beyond Infection Control:

The New Hospital Epidemiology

Bryan P. Simmons, MD

Stephen B. Kritchewsky, PhD

Memphis, Tennessee

Wing Hong Seto, MD

Hong Kong

Disinfection and Sterilization

William A. Rutala, PhD, MPH

Chapel Hill, North Carolina

Emerging Infectious Diseases

Larry J. Strausbaugh, MD

Portland, Oregon

Robert W. Pinner, MD

Atlanta, Georgia

From the Laboratory

Marcus Zervos, MD

Royal Oak, Michigan

Fred C. Tenover, PhD

Atlanta, Georgia

Information Management

John A. Sellick, DO

Buffalo, New York

The International Perspective

Mary D. Nettleman, MD, MS

Richmond, Virginia

Issues in Surgery

James T. Lee, MD, PhD

St. Paul, Minnesota

Medical News

Gina Pugliese, RN, MS

Chicago, Illinois

Martin S. Favero, PhD

Irvine, California

Practical Healthcare Epidemiology

Loreen A. Herwaldt, MD

Iowa City, Iowa

SHEA News

Murray D. Batt, MD

Clarksburg, West Virginia

Statistics for Hospital Epidemiology

David Birnbaum, PhD, MPH

Sidney, British Columbia, Canada

Topics in Long-Term Care

Philip W. Smith, MD

Omaha, Nebraska

Topics in Occupational Medicine

David Weber, MD, MPH

Chapel Hill, North Carolina

INFECTION CONTROL AND HOSPITAL EPIDEMIOLOGY®

EDITORIAL ADVISORY BOARD

Jacques F. Acar, MD	Paris, France
J. Wesley Alexander, MD	Cincinnati, Ohio
Paul Arnow, MD	Chicago, Illinois
Graham A.J. Ayliffe, MD	Birmingham, United Kingdom
Neil L. Barg, MD	Yakima, Washington
Elizabeth Ann Bolyard, RN, MPH, CIC	Atlanta, Georgia
John M. Boyce, MD	Providence, Rhode Island
Professor Dr. Ilja Braveny	Munich, Federal Republic of Germany
Charles Bryan, MD	Columbia, South Carolina
Christian Brun-Buisson, MD	Creteil, France
Donald E. Craven, MD	Boston, Massachusetts
Sue Crow, MSN, RN, CIC	Shreveport, Louisiana
Franz Daschner, MD	Freiburg, Federal Republic of Germany
Leigh G. Donowitz, MD	Charlottesville, Virginia
Charles E. Edmiston, Jr., PhD	Milwaukee, Wisconsin
Theodore C. Eickhoff, MD	Denver, Colorado
Bruce Farber, MD	Manhasset, New York
Victoria J. Fraser, MD	St. Louis, Missouri
Peter C. Fuchs, MD, PhD	Black Butte, Oregon
Richard A. Garibaldi, MD	Farmington, Connecticut
Velvl Greene, PhD, MPH	Beer Sheva, Israel
Robert Gaynes, MD	Atlanta, Georgia
David W. Gregory, MD	Nashville, Tennessee
David K. Henderson, MD	Bethesda, Maryland
Peter N.R. Heseltine, MD	Los Angeles, California
Karen Hoffmann, RN, CIC, MS	Chapel Hill, North Carolina
Marguerite McMillan Jackson, RN, PhD	San Diego, California
Janine Jagger, MPH, PhD	Charlottesville, Virginia
William R. Jarvis, MD	Atlanta, Georgia
Douglas S. Kernodle, MD	Nashville, Tennessee
Robert H. Latham, MD	Nashville, Tennessee
Lewis B. Lefkowitz, MD	Nashville, Tennessee
Hsieh-Shong Leu, MD, MSc	Taipei, Taiwan
Jack Levy, MD	Brussels, Belgium
Victor Lorian, MD	Bronx, New York
Dennis G. Maki, MD	Madison, Wisconsin
Professor Dr. Walter Marget	Munich, Federal Republic of Germany
William J. Martone, MD	Bethesda, Maryland
Allison McGeer, MD	Toronto, Ontario, Canada
John E. McGowan, Jr., MD	Atlanta, Georgia
Jonathan L. Meakins, MD, DSc	Montreal, Quebec, Canada
Raf Mertens, MD	Brussels, Belgium
Robert R. Muder, MD	Pittsburgh, Pennsylvania
Joseph M. Mylotte, MD, CIC	Buffalo, New York
Lindsay Nicolle, MD	Winnipeg, Manitoba, Canada
Juhani Ojajärvi, MD	Helsinki, Finland
Michael T. Osterholm, PhD, MPH	Minneapolis, Minnesota
Jan Evans Patterson, MD	San Antonio, Texas
Sindy M. Paul, MD	Trenton, New Jersey
Michael A. Pfaller, MD	Iowa City, Iowa
Samuel Ponce de Leon, MD, MSc	Mexico City, Mexico
Isaam Raad, MD	Houston, Texas
Manfred L. Rotter, MD, DipBact	Vienna, Austria
Theodore Sacks, MD	Jerusalem, Israel
William E. Scheckler, MD	Madison, Wisconsin
Kent Sepkowitz, MD	New York City, New York
Denis Spelman, MD	Prahran Victoria, Australia
Michael L. Tapper, MD	New York, New York
Clyde Thornsberry, PhD	Brentwood, Tennessee
Professor Leonid P. Titov	Minsk, Republic of Belarus
Timothy R. Townsend, MD	Millwood, Virginia
Antoni Trilla, MD, PhD	Barcelona, Spain
Professor Wang Shu-Qun	Beijing, People's Republic of China
J. John Weems, Jr., MD	Greenville, South Carolina
Robert A. Weinstein, MD	Chicago, Illinois
Professor Dr. W. Weuffen	Greifswald, Federal Republic of Germany
Sergio B. Wey, MD	São Paulo, Brazil
Rebecca Wurtz, MD	Evanston, Illinois

SLACK Incorporated

6900 Grove Road
Thorofare, New Jersey 08086
(609) 848-1000

Vice President/Group Publisher

Richard N. Roash

Publisher

John C. Carter

Editorial Director

Jennifer Kilpatrick

Production Editor

Shirley P. Strunk, ELS

Assistant Editor

Eileen C. Anderer

Circulation Manager

Lester J. Robeson, CCCP

Production Director

Christine Malin

Production Coordinator

Joanne Patterson

Publishing Director/ Advertising

Wayne McCourt

Pharmaceutical Group Sales Director

Michael LoPresti

Advertising Sales Representative

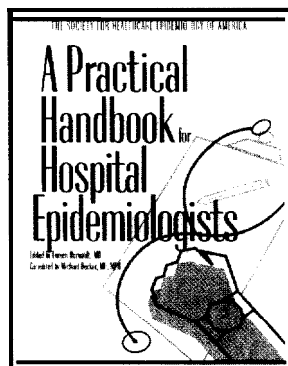
Jennine Kane

Classified/Recruitment Sales Manager

Michele Burch

ALL THE ANSWERS UNDER ONE COVER

Learn From The Experts



A Practical Handbook for Hospital Epidemiologists

Edited by Loreen A. Herwaldt, MD

and co-edited by Michael D. Decker, MD, MPH

Soft Cover, 250 pp, ISBN 1-55642-302-0, Order# 13020, \$39.95

A Practical Handbook for Hospital Epidemiologists is the most complete source for practical advice on hospital epidemiology. It is intended to be a pragmatic guide that will assist both beginning and experienced epidemiologists in establishing and operating a successful hospital epidemiology program.

This handbook will supplement the various scientific references already available for hospital epidemiologists. It will provide practical information and advice regarding many aspects of operating a hospital epidemiology program and will help hospital epidemiologists improve their practices.

The Society for Healthcare Epidemiology of America (SHEA) has recruited the most recognized leaders in

the field to share their expertise. They will share successful strategies for handling specific situations. The authors cover many topics that every newcomer should know but are usually learned through experience. These topics include:

- Overarching goals and ethical principles you should adopt to guide your practice
- What you can do to educate yourself
- How to negotiate with the administration and communicate with colleagues
- How to develop policies and procedures
- How to develop a surveillance system

Contents

Getting Started

Chapter 1: An Introduction to Practical Hospital Epidemiology

Chapter 2: The Hospital Epidemiologist-Practical Ideas

Chapter 3: Educational Needs and Opportunities for the Hospital Epidemiologist

Chapter 4: Negotiating with the Administration—How to Get Rid of Doing Hospital Epidemiology

Chapter 5: The Infection Control Committee

Chapter 6: Developing Policies and Guidelines

Chapter 7: Intramural and Extramural Communication

Chapter 8: Ethical Aspects of Infection Control Surveillance and Analysis

Chapter 9: Basics of Surveillance—An Overview

Chapter 10: Hospital-Acquired Pneumonia: Perspectives for the Health Care Epidemiologist

Chapter 11: Basics of Surgical Wound Infection Surveillance

Chapter 12: Surveillance for Infections Associated with Vascular Catheters

Chapter 13: Designing Surveillance for Noninfectious Outcomes of Medical Care

Chapter 14: Outbreak Investigations

Chapter 15: Exposure Work-Ups

Chapter 16: Isolation

Chapter 17: Basics of Stratifying for Severity of Illness

Chapter 18: Quantitative Epidemiology

Support Functions

Chapter 19: Microcomputers in Hospital Epidemiology

Chapter 20: The Computer-Based Patient Record: The Role of the Hospital Epidemiologist

Chapter 21: Basic Microbiologic Support for Hospital Epidemiology

Chapter 22: Epidemiologic Typing Systems

Special Topics

Chapter 23: Epidemiologic Approaches to Quality Assessment

Chapter 24: Disinfection and Sterilization of Patient Care Items

Chapter 25: Controlling Use of Antimicrobial Agents

Chapter 26: Product Evaluation

Chapter 27: Employee Health and Infection Control

Chapter 28: Tuberculosis Control in Healthcare

Chapter 29: Infection Control Issues in Construction and Renovation

Chapter 30: Hospital Epidemiology in Smaller Hospitals

Chapter 31: Infection Control in public Hospitals

Chapter 32: Infection Control in Long-Term Care Facilities

Chapter 33: Infection Control in the Outpatient Setting

Chapter 34: OSHA Inspections

Chapter 35: Preparing for and Surviving a JCAHO Inspection

Order Coupon

-Yes, Send me -copies of *A Practical Handbook for Hospital Epidemiologists* (order# 13020) at the Special Introductory Price of \$39.95 each. (Shipping and Handling May Apply) Foreign orders add \$25.00 USD for direct air-freight shipping to your location

Subtotal \$ _____

NJ residents add 6% sales tax \$ _____

Total \$ _____

Please print

Name _____

Address _____

City _____

State/Country _____

Zip _____

Phone _____ Fax _____

-Check enclosed (payable to SLACK Inc., in US dollars drawn on a US bank)

-Charge My _____ - Visa _____ Mastercard _____ American Express _____

Account No. _____ Exp. _____

Signature _____

SLACK Incorporated, 6900 Grove Road, Thorofare, NJ 08086-9447, USA

To order call (in the US) 800-257-8290 or 609-848-1000

Fax orders to m-853-599 1

Order on-line: orders@slackinc.com

www: http://slackinc.com

All Prices Are Subject To Change.

4A178

MEDICAL MATRIX

GUIDE TO
INTERNET CLINICAL
MEDICINE RESOURCES

selected, ranked, peer-reviewed, annotated, continuously updated, full-text patient care resources

● MEDICAL NEWS ● MEDLINE ● NEW ITEMS ● ABOUT MM
● JOURNALS ● CME ● OFFER URL ● ASSIST


site selection by the Editorial Board ● web mastering by SLACK Incorporated

MEDICAL MATRIX

**The Largest Peer-Reviewed
Internet Site for
Clinical Medicine Resources**

- Reviewed and updated continuously by an Editorial Board comprising physicians, medical informatics specialists and webmasters
- Visit the Medical Matrix site for **FREE ACCESS** to the latest medical information on the Web!

www.medmatrix.org



**9 out of
10 mice prefer it.**

Catch the free Consumer Information Catalog online and you'll get the latest info from the U.S. Government. Just point and click your way to **www.pueblo.gsa.gov** and you'll find more than 250 free publications ready to read or download.

Or, order the Catalog by mailing your name and address to **Free Catalog, Pueblo, CO 81009.**

U.S. General Services Administration

PREVENTION 98

TRANSLATING SCIENCE INTO ACTION

April 2 - 5, 1998 . San Francisco, CA

Don't Miss the Most Important Preventive Medicine Meeting of the Year!

PREVENTION 98: Translating Science Into Action will provide a major forum for physicians and other health professionals with special expertise or interest in disease prevention and health promotion.

This year, **PREVENTION** will examine preventive medicine expertise and explore ways that this expertise can be translated into ethical, effective, evidence-based action and policy. The program will emphasize skill-building and will feature sessions on important topics such as:

- *Practice guidelines development
- *Undergraduate and graduate medical education
- *Medical management
- *Quality assurance
- *Cancer screening
- *Community preventive services
- *Clinical preventive services

AMA cat. 1 credit will be awarded. For information, contact **PREVENTION 98** at (202) 466-2569, prevention@acpm.org or write 1660 L Street, NW, Suite 206, Washington DC 20036.

ACPM ATPM
American College of
Preventive Medicine ASSOCIATION OF TEACHERS
OF PREVENTIVE MEDICINE

www.prevention-meeting.org/prevention



Eighth Annual Scientific Meeting

April 5-7 1998. Hilton Walt Disney World Village. Orlando, Florida

SATURDAY, APRIL 4, 1998

WORKSHOP I

Compliance with new JCAHO Performance Measurement Requirements (ORYX) for Accreditation: Ready or Not?

WORKSHOP II

DNA Typing Techniques in Infection Control - Who, What, When, Where and Why?

WORKSHOP III

Infection Control Problem Solving in Long Term Facilities

WORKSHOP IV

Antimicrobial Control Problems: Justification, Implementation and Evaluation

***SUNDAY, APRIL 5, 1998 -
TUESDAY, APRIL 7, 1998***

PLENARY SESSIONS:

Never Ending Struggle: Resistant Pathogens

- The Epidemiology of VRE in Two Continents - Are the Differences Real or Perceived?
- Multi Drug Resistant Pneumococcus - Lessons Learned from The Canadian Experience
- Multi Drug Resistant - Gram Negative Pathogens - Early Detection and Control

The Role of Antibiotic Control

- Do We Need and What is the Utility of Antibiotic Control?
- How to Control Antibiotic Use - A National Approach: Europe
- Antibiotic Control in the Absence of a National Policy: Effective Tools

Public Disclosure of Process and Outcome Measures: Point/Counter Point

Infection Control in Evolving Healthcare Systems

- Surveillance in Freestanding Surgical Centers: Experience with an International Patient Base
- Pre-Hospital Infection Control - The Missing Piece
- Healthcare Surveillance: What Should Be Included?

SYMPOSIA:

Controversies in Identification and Risk Adjustment of Nosocomial Infection

- Colonization vs. Infection
- Device Days
- Optimum Risk Adjustment: Point/Counterpoint

Two Epidemiology and Prevention of Errors in Medicine

- The Epidemiology of Error's: Lessons from Adverse Drug Events
- Approaches to Error Detection and Reduction
- Human Factors and Systems Analysis in Medical Errors

Emerging Problems with Nosocomial Fungi

- Resistant *Candida*: What Does It Mean?
- Outbreaks of Unusual Fungi
- Fungal Infections in Pediatric Patients

Re-Engineering Infection Control

- Dollars and Sense: Practical Guide to Cost Analysis
- Cost Justification of Safety Devices to Prevent Transmission of Bloodborne Pathogens
- Proving Your Value Today and in the Future

Meet the Consultants:

Seven Meet the Consultant Sessions where you can consult with specialists in your field of interest.

For additional information regarding the SHEA Annual Meeting, please contact the SHEA Meetings Department; 19 Mantua Road, Mt. Royal, NJ 08061, Telephone (609) 845-7220 or Fax (609) 853-0411. email: meetings@tmg.smarthub.com

NOTE: THE DEADLINE FOR EARLY REGISTRATION IS MARCH 20, 1998

ABSTRACT SUBMISSION DEADLINE: JANUARY 9, 1998

Think of us first!

For everything you've been looking for in your career, look to **Health First**! We are currently offering an exciting opportunity for a talented, experienced specialist to join our multi-faceted team of professionals. Located on East Central Florida's beautiful "Space Coast," Health First employees enjoy:



- NO STATE INCOME TAX
- A RELAXED BEACHSIDE COMMUNITY
- AFFORDABLE HOUSING
- ABUNDANT RECREATION
- EASY ACCESS TO ORLANDO



Accept the challenge to promote quality in infection control, epidemiology practices and serve as a clinical resource throughout all Health First entities. The ICP assumes the roles of practitioner, educator, manager, consultant, patient advocate, investigation, and promotes continuous quality improvement.

Candidates must possess or be pursuing a Bachelor's degree, Master's preferred. Must be a Florida licensed RN or in area of clinical specialty with a national certification in Infection Control. Experience in epidemiology preferred.

For immediate consideration or more details, please call **Employee Relations at 407-676-7110**. Or send your resume to: **Health First/Holmes Regional Medical Center, Employee Relations, 1350 S. Hickory St., Melbourne, FL 32901.**
<http://www.health-first.org> EOE.

Health First

Cape Canaveral Hospital
Holmes Regional Medical Center
Palm Bay Community Hospital

Attention

Searching for an associate, planning a career move, have items for sale, offering an education session?

INFECTION CONTROL AND HOSPITAL EPIDEMIOLOGY can show you how to reach 6,200 infection control practitioners, physicians, epidemiologists, and microbiologists.

Classified Marketplace Rates:

- \$25* per line, 6 line minimum, 54 spaces per line
- 1/4 page-\$785, 1/2 page-\$990, full page-\$1 535

Start your classified ad in the next available issue. Fax your ad today
609-848-6091

Or call your
 Classified Advertising Representative
1-800-257-8290, 609-848-1 000 in NJ

INFECTION CONTROL AND
HOSPITAL EPIDEMIOLOGY

6900 Grove Road, Thorofare, NJ 08086



*Net rate exp. 12/1/97 CM1

EMPLOYMENT OPPORTUNITIES

HOSPITAL EPIDEMIOLOGY: MD; ID BC-BE with IC experience to join University ID Division providing hospital epi services for multi-hospital system. Well developed IC database exists for SSI, VAP, antibiotic utilization and risks to HCWs. Opportunities for clinical research, teaching, patient care. Send CV to: **V. Fraser, Infectious Diseases, Washington U., 660 S. Euclid, St. Louis, MO 63110 or fax to: 314-362-5727.**

FOR YOUR CONVENIENCE you can fax your ad for placement in **INFECTION CONTROL AND HOSPITAL EPIDEMIOLOGY 609-848-6091**, attn: Classified Advertising Department or call **1-800-257-8290**, in New Jersey **609-848-1000**.

SHEA

CDC Guidelines
for Surveillance
Prevention & Control
of Nosocomial
Infections

All In One Single Volume
for only **\$99.00** * Plus Shipping
& Handling

Urinary Tract Infections • Surgical Wound Infections
Handwashing and Environmental Control • Hospital Personnel
HIV and HBV Exposure-Prone Procedures • Pneumonia
Tuberculosis • Vancomycin Resistance • IV Device-Related
Infections • Isolation Precautions • HIV Post-Exposure
Chemoprophylaxis • HCV Post-Exposure Prophylaxis
and Index of SHEA Position Papers

Foreword by **Julia S. Garner, RN, MN**

To Order Call **1-800-347-6893**

(International Orders Call 608-278-9303)

• SHEA Journal Subscribers mention this ad for 10% discount

SJ697