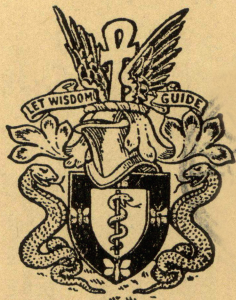


THE JOURNAL
OF
MENTAL SCIENCE
(THE BRITISH JOURNAL OF PSYCHIATRY)



BY AUTHORITY OF
THE ROYAL MEDICO-PSYCHOLOGICAL ASSOCIATION

EDITOR-IN-CHIEF
G. W. T. H. FLEMING

WITH THE ASSISTANCE OF

Alexander Walk (Co-Editor)

L. C. Cook

F. L. Golla

P. K. McCowan

A. Meyer

R. M. Norman

(The above constitute the Journal Committee)

AND

Lord Adrian

C. J. C. Earl

W. Ross Ashby

J. N. P. Moore

Sir F. C. Bartlet

A. A. W. Petrie

Sir W. E. le Gros Clark

Derek Richter

S. M. Coleman

E. T. O. Slater

LONDON
J. & A. CHURCHILL, LTD

Published Four times Yearly Fifteen Shillings net

THE JOURNAL OF MENTAL SCIENCE

Communications on general editorial matters, including MSS. for publication, books for review and other printed matter, and communications regarding the *Epitome* section, including journals to be abstracted, should be sent to the Editor-in-Chief, Barnwood House, Gloucester.

Communications and enquiries regarding sales should be addressed to the Publishers, Messrs. J. & A. CHURCHILL, Ltd., 104 Gloucester Place, Portman Square, London, W.1; and those regarding Advertisements to Aldridge Press Ltd., 27 Chancery Lane, W.C.2.

Details of membership of the Royal Medico-Psychological Association are obtainable from the Secretary, R.M.P.A., 11 Chandos Street, Cavendish Square, London, W.1.

THE ROYAL MEDICO-PSYCHOLOGICAL ASSOCIATION PUBLICATIONS

FROM MESSRS. ADLARD & SON, LTD.,
Bartholomew Press, Dorking, Surrey.

Enquiry (History) Form, for use in Mental Hospitals. In three sizes. Prices and specimen forms on application.

FROM MESSRS. J. & A. CHURCHILL, LTD.,
104 Gloucester Place, W.1.

"The Journal of Mental Science." Published four times a year. Price 15/-. Postage extra.
"Recent Progress in Psychiatry." Vol. 2, 1950. Pp. 711. Price 50/-.

FROM MESSRS. BAILLIÈRE, TINDALL & COX,
8 Henrietta Street, W.C.2.

"Handbook for Mental Nurses." 8th edn. 1954. Price 21/-.
"Manual for Mental Deficiency Nurses." 1931. Price 6/6 net.

FROM THE SECRETARY, 11 Chandos Street, W.1.

The Charter and By-Laws of the Association. Price 2/- . Postage 1½d.
"Recent Progress in Psychiatry." Vol. 2, 1950 (at special price to members of R.M.P.A.).

WYKE HOUSE, ISLEWORTH

MIDDLESEX Tel. EALING 7000

A Private Hospital for individual treatment of all forms of Nervous and Mental illness, including Alcoholism. Uncertified and certified patients are admitted and particular attention is given to the needs of the aged. This well-known Home for Men and Women is surrounded by attractive and secluded grounds, and all well-tried modern treatments are available.

DR. H. PULLAR-STRECKER

DR. G. W. SMITH, O.B.E.

HEIGHAM HALL, NORWICH

PRIVATE MENTAL HOME for Nervous and Mental illness. All types of treatment carried out. Accommodation for Alcoholics and Addicts available. Special Geriatric Unit now open.

Fees from 7 gns. per week upwards according to requirements.

Apply to Dr. J. A. SMALL.

Telephone: Norwich 20080.

NORTHUMBERLAND HOUSE

A Psychiatric Nursing Home for voluntary and certified patients. Situated in pleasant grounds at 237-9 Ballards Lane, N.3. Tel. FINchley 5283. Resident Medical Director, Robert M. Riggall, L.R.C.P. London & Edin. Memb. Brit. Psycho-Analytical Socy. Deep Insulin Coma Unit, psychotherapy, etc. Fee from 12 gns. Central heating and running water in all rooms.

CHISWICK HOUSE PINNER, MIDDLESEX

Telephone: PINNER 234

Private Nursing Home for Mental and Nervous illness. All modern forms of treatment. Two country houses in adjoining grounds of 5 and 6 acres respectively. 12 miles from London. Trains every 15 minutes from Baker Street to Pinner.

DOUGLAS MACAULAY, M.D., D.P.M.

HITCHAM PLACE, BURNHAM, BUCKS.

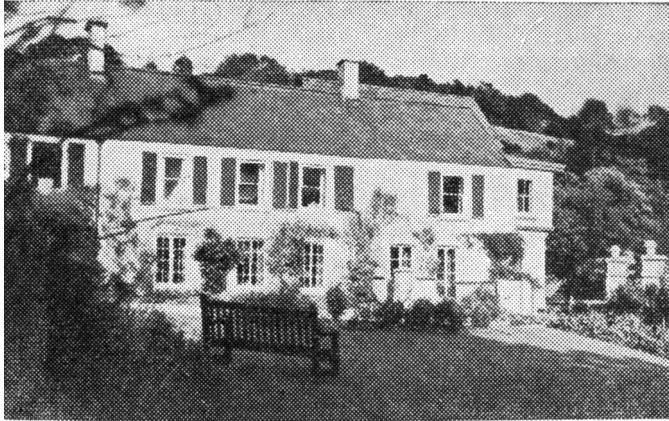
(late Fenstanton, Christchurch Road, S.W.2)

A Private Home for the Care and Treatment of a limited number of Ladies with Mental and Nervous Disorders. Temporary and Voluntary Patients received. Large Country Mansion with twenty acres of grounds in Green Belt. Home-like surroundings.

Apply: Dr. Madeline R. Lockwood, Resident Physician. Telephone: Burnham 624

BARNWOOD HOUSE

GLOUCESTER



CRICKLEY COURT—ONE OF THE SEPARATE VILLAS

A REGISTERED HOSPITAL (outside the National Health Service), for the **CARE and TREATMENT** of **LADIES and GENTLEMEN** suffering from **NERVOUS and MENTAL DISORDERS**. Within two miles of the Western and London Midland Regional Railway Stations at Gloucester, the Hospital is easily accessible by rail from London and all parts of the United Kingdom. It is beautifully situated at the foot of the Cotswold Hills, and stands in its own grounds of over 300 acres. Voluntary Patients of both sexes are also received for treatment. Special accommodation is also provided at three villa residences, all of which stand in their own grounds and are entirely separate from the main Hospital. All the most modern methods of treatment including electric shock and prefrontal leucotomy are used.

For Terms, etc., apply to

G. W. T. H. FLEMING, M.R.C.S., L.R.C.P., D.P.M.,
Physician Superintendent

who may be seen in London by appointment

TELEPHONE: No. 66207 GLOUCESTER



**Remarkably safe and
free from toxic effects**

N y d r a n e

n-BENZYL- β -CHLOROPROPIONAMIDE

**in the treatment of Grand-mal
and Psychomotor Epilepsy**

NYDRANE is remarkable in that no toxic or unpleasant side-effects have been experienced with its use



NYDRANE usually makes patients more mentally alert, brighter, and more co-operative, opposing even the soporific action of any other anticonvulsant used



NYDRANE often successfully stabilises the more resistant cases, enabling them to lead a more normal, useful life



NYDRANE tablets are *colourless, odourless*, and are readily accepted and well tolerated



Nydrane tablets each containing 500 mg. *n*-benzyl- β -chloropropionamide are available in bottles of 50 and 250, and tins of 1,000 tablets

Literature and samples gladly on request



RONA LABORATORIES LTD

12/13 Molyneux Street, London, W.1

AMBassador 4437/8

Obsessional Neurosis . . .

DELYSID

(L.S.D. 25)

(Lysergic acid diethylamide tartrate)

“Repressed material may be produced with great freedom and emotional release in the form of screaming and crying frequently occurs.”

(J. ment. Sci., 1954, 100, 493)

Delysid is available in boxes of 12 or 50 ampoules, each containing 0.1 mg. in 1 ml.

Hospital Prices have recently been reduced to 15/4 and 60/- respectively

Literature is available on request



SANDOZ PRODUCTS LIMITED

134 Wigmore Street

London, W.1



'MEPAVLON', I.C.I.'s new tranquilliser, is distinguished by its ability to relieve both mental and muscular tension without dulling consciousness. It has proved to be particularly suitable for calming the nervous patient troubled with anxiety, restlessness and irritability. In such cases, 'Mepavlon' stabilises the emotions, relaxes tension and relieves nervous insomnia by inducing natural sleep. No less important: its toxicity is low, it is well tolerated, and side effects are rare.

'Mepavlon' thus combines effectiveness with safety and provides a most satisfactory treatment for the psychoneuroses and for the restoration of repose.

Fully active by mouth, 'Mepavlon' is presented in tablets each 400 mgm. in containers of 30 and a dispensing pack of 250.

'Mepavlon' (*meprobamate I.C.I.*)

relieves tension and anxiety neuroses

IMPERIAL CHEMICAL INDUSTRIES LIMITED
PHARMACEUTICALS DIVISION WILMSLOW CHESHIRE

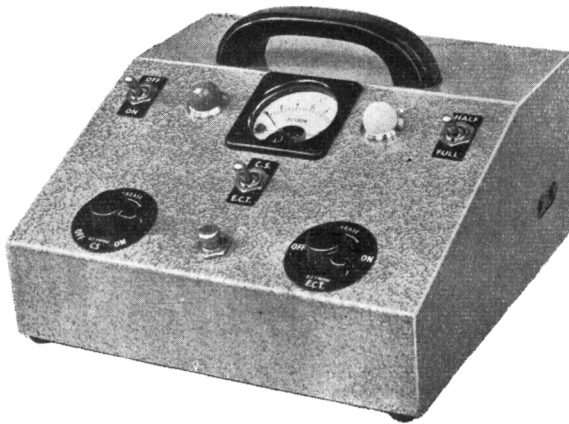


Ph. 708

'ECTONUSTIM'

E.C.T. APPARATUS and CEREBRAL STIMULATOR

(A.C. or D.C. Mains)



For a new improved E.C.T. technique which eliminates the need for muscle relaxants and anaesthetics.

Also:

' ECTONUS '

—E.C.T. apparatus

' ECTRON '

—E.C.T. apparatus

' ECTRON '

—Rubber Mouth Gag

' ECTRONOLYTE '

—Electrolyte Powder

Write for full details to: **ECTRON LTD**

REELEK WORKS · BALDOCK · HERTS · ENGLAND

Telegrams: "Reelek" Baldock

Telephone: Baldock 3276

The New "Psycon" Self-contained Electroplexy Apparatus



An outstanding apparatus, extremely light in weight and compact, for the accurate, safe and simple administration of electroplexy—*anywhere*.

Freedom from trailing mains leads greatly appreciated by consultants and patients alike.

Very economical in operation.

Write for full details to:—

THERATRONICS, LTD.

6 ARGYLE WALK, LONDON, W.C.1

PACATAL

10-(*N*-methyl-3-piperidylmethyl) phenothiazine

TRADE MARK



Pacatal is the improved tranquillizing drug with a range of activity significantly different in some aspects from that of chlorpromazine. Within the psychiatric field, response to Pacatal is most marked

in the treatment of
PARANOID SCHIZOPHRENICS
AGITATED DEPRESSIVES
SENILE PATIENTS

Pacatal tends to produce better results in patients over fifty than in the younger age groups and it has also been observed that women often respond better than men.

Presentation:

Tablets 25 and 100 mg. in bottles of 50 and 500.
 Ampoules, each containing 50 mg. in 2 ml.
 in boxes of 10 and 50.



WILLIAM R. WARNER & CO. LTD., POWER ROAD, LONDON W.4.

PAC 362/8



Reproduced by courtesy of the Trustees of the National Gallery

"The House of Cards" CHARDIN

A Question of Stability

For many people, the stresses and strains of everyday existence may have a profound effect on the carefully built edifices of their lives and it may take just that extra jog to bring their insecure little world tumbling about their ears.

You cannot possibly control the conditions which weaken the foundations of such patients' lives. But, by prescribing Equanil, you can provide them with a cement to rebuild a steady and more stable frame of mind out of a rubble of nebulous fears and fancies. Equanil restores repose—safely, effectively and reliably.

EQUANIL (MEPROBAMATE)

PACKS: 400 mg. tablets in containers of 20 and 250.

The word 'Equanil' is the registered trade mark of



JOHN WYETH & BROTHER LIMITED
CLIFTON HOUSE, EUSTON ROAD, LONDON, N.W.1

E.1

INSTRUCTIONS TO AUTHORS

Strict observation of the following requirements will save intending authors considerable time and worry, and will facilitate the publication of papers submitted.

(1) Authors should consult a current issue to see how a paper should be presented. They should consult *General Notes on the Preparation of Scientific Papers*, published for the Royal Society by the Cambridge University Press, 200 Euston Road, London, N.W.1 (price 2s. 9d. post free).

(2) The title should be brief and contain no sub-heading. This should be followed by the author's name, his qualifications and his present appointment.

(3) Omit a summary of the literature when this has been adequately summarized elsewhere.

(4) For reasons of economy, case-histories of patients can be published only when they are of exceptional scientific interest.

(5) Diagrams and graphs must be drawn in black ink with properly printed lettering. If they have to be redrawn by the printer, the cost, which may amount to several pounds, will be charged to the author.

(6) Tables and graphs should be kept as few as possible. If they number more than a few, the author must be prepared to pay part of their cost.

(7) Any deviation or difference that might be due to random sampling must, if it is to be discussed in its general, scientific significance, be first shown, by calculation of the appropriate probability, to be significant statistically.

(8) All references should be given at the end of the paper, in alphabetical order, and be numbered, i.e.

(1) SMITH, A. B., *J. Ment. Sci.*, 1950, **95**, 493.

(2) THOMAS, B. C., *Arch. Neur. Psychiat.*, 1955, **74**, 489.

In the body of the paper they should appear as: Smith (1), Thomas (2).

(9) When the proof arrives from the printer it is for the correction of printer's mistakes only. Larger alterations can be made only with the Editor's permission and if the author is willing to defray the cost.

(10) Each author and co-author will receive 10 reprints of his paper free of charge. If further reprints are required the order should be sent **direct** to Messrs. Headley Brothers, Ltd., The Invicta Press, Ashford, Kent.

(11) A paper sent to the Editor-in-Chief is, as a rule, sent to one of the panel of Referees set out on the cover of the Journal for his opinion. Papers are as a rule not rejected until a second or further opinion has been received.

In coma

delirium*depression*

PARENTROVITE

Injectable B complex with vitamin C

A massive dose of injectable B complex with vitamin C . . . to restore normal cerebral functions in toxic states due to narcotic or barbiturate drugs, alcohol, or acute infections.

In boxes of 3 pairs of ampoules.

Hospital pack also available.

A preparation **OROVITE**, containing the same B complex vitamins in high concentration for oral administration, is also available, *In tablets and elixir.*

Two groups of preparations containing the vitamin B complex in less massive concentration are: **BECOVITE & BEFORTISS.** *In tablets, ampoules and elixirs.*



VITAMINS LIMITED

(DEPT. AR. I), UPPER MALL, LONDON, W.6.



[Crown Copyright Reserved]

THOMAS PERCY REES
President, 1956-57

[Frontispiece]