

This is an Accepted Manuscript for Parasitology. This version may be subject to change during the production process. DOI: 10.1017/S0031182024000374

Phylogenetic evidence of a possible *Trichuris globulosa* species complex in Arabian camels from Kuwait

Adawia Henedi^{1,*}, Abigail Hui En Chan^{2,*}, Wessam Youssef^{3,4}, Hoda A Taha⁵, Urusa Thaenkham², Ameen A Ashour⁵

¹Parasitology Lab, Veterinary Laboratories, Public Authority of Agriculture Affairs and Fish Resources, Rabia, Kuwait; ²Department of Helminthology, Faculty of Tropical Medicine, Mahidol University, Bangkok, Thailand; ³Department of Biotechnology, Animal Health Research Institute, Dokki, Egypt; ⁴Molecular Biology Lab, Veterinary Laboratories, PAAFR, Rabia, Kuwait; and ⁵Zoology department, Faculty of Science, Ain Shams University, Cairo, Egypt

*The authors contributed equally to this work

Corresponding authors: Urusa Thaenkham, urusa.tha@mahidol.edu; Ameen A Ashour, ashourameen@gmail.com

This is an Open Access article, distributed under the terms of the Creative Commons Attribution-NonCommercial-NoDerivatives licence (<http://creativecommons.org/licenses/by-nc-nd/4.0/>), which permits non-commercial re-use, distribution, and reproduction in any medium, provided the original work is unaltered and is properly cited. The written permission of Cambridge University Press must be obtained for commercial re-use or in order to create a derivative work.

Abstract

During a one-year study, *Trichuris* adults were obtained after necropsy of Arabian camels (*Camelus dromedarius*) from a slaughterhouse in Kuwait. Morphological and molecular identification was performed to confirm the identity of the *Trichuris* specimens obtained from *Camelus dromedarius*. Fifteen male *Trichuris* specimens were selected, and molecular identification was done using the mitochondrial Cytochrome *c* oxidase subunit I (*COI*), 12S ribosomal RNA, 16S ribosomal RNA genes, and the nuclear Internal transcribed spacer 2 (ITS2) region. Through phylogenetic analysis, two distinct groups were obtained using the mitochondrial genes, where group 1 showed a close relationship to *T. globulosa* while group 2 showed a close relationship to *T. ovis*, providing molecular evidence of a possible *T. globulosa* species complex. Additionally, the nuclear ITS2 region did not provide enough resolution to distinguish between the 2 groups of *Trichuris* specimens. Observation of morphological characters revealed variations in the shape of the male spicule sheath, where specimens present either a globular posteriorly truncated swelling or the absence posteriorly truncated swelling. Moreover, the variations in male spicule sheath does not corroborate with the results of molecular data, suggesting the limited use of this character for identification of *T. globulosa*. In conclusion, molecular analysis suggests a possible species complex in *T. globulosa*, with the mitochondrial genetic markers successfully differentiating between the 2 groups. The limited use of the male spicule sheath as a diagnostic character for identification of *T. globulosa* is suggested.

Keywords: *Trichuris globulosa*; species complex; molecular identification; mitochondrial DNA; nuclear DNA; Kuwait

Introduction

The genus *Trichuris* Roederer, 1761 includes numerous species that parasitize humans and animals, and have a cosmopolitan distribution (Doležalová *et al.*, 2015). Species identification has generally been based on morphological characters and morphometrical measurements, including host species as a guide (García-Sánchez *et al.*, 2019). Molecular phylogenetics are also providing evidence of species complexes within *Trichuris*, where it is highly possible that *Trichuris* can harbor cryptic species due to their wide geographic distribution and capability to parasitize variety of host species (Callejón *et al.*, 2012; Ravasi *et al.*, 2012; Robles *et al.*, 2014; Rivero *et al.*, 2021). In ruminants, more than 23 species of *Trichuris* have been described, including *Trichuris globulosa* (Linstow, 1901), *Trichuris ovis* (Abildgaard, 1795), *Trichuris skrjabini* Baskakov, 1924, and *Trichuris discolor* (Linstow, 1906) (Knight, 1974; Cutillas *et al.*, 1995). In camels specifically, nine species of *Trichuris* have been found. They are *Trichuris barbetonensis* Ortlepp, 1937, *T. globulosa*, *Trichuris infundibulus* (Linstow, 1906), *Trichuris lani* (Artjuch, 1948), *T. skrjabini*, *Trichuris tenuis* Chandler, 1930, *Trichuris vulpis* (Froelich, 1798), *Trichuris raoi* Alwar and Achutan, 1960, and *Trichuris cameli* (Chandler, 1930; Knight, 1971; Sazmand and Joachim, 2017). Aside from parasitizing camels, some species have also been found in other hosts, for example, *T. globulosa* have also been found in sheep and goats, while *T. skrjabini* have been reported in other large and small ruminants (sheep, deer, goats, elk) (Knight, 1971) Similarly, *T. ovis* and *T. discolor*, which are parasites of sheep and cattle respectively, were also found in many hosts globally (Chandler, 1930; Knight, 1971; Cutillas *et al.*, 1995; Wang *et al.*, 2012; Oliveros *et al.*, 2000)

Based on male morphology, the spicule sheath, spicule lengths and spines on the spicule sheath are used as the main criteria for differentiating *T. globulosa* and *T. ovis*. *T. globulosa* was described as having the spicule sheath with a globular posteriorly truncated swelling, with spines longer on the swelling than the rest of the spicule sheath, while in *T. ovis*, two

morphological types of spicule sheath were observed; one was having a spherical bulge in the distal part of the spicule sheath (Yevstafieva *et al.*, 2018) and one with a globular posteriorly truncate sheath (Sarwar, 1945; Cutillas *et al.*, 1995). Although spicule lengths have been cited as a useful criterion by Chandler (1930), overlapping lengths were previously reported from specimens isolated from various hosts, limiting their discriminatory power (Chandler, 1930; Callejón *et al.*, 2015a). In *Trichuris* females, the structure of the vulva is mainly used for species differentiation. Baylis (1932) found consistent differences between the vulva structure of *T. globulosa* and *T. ovis* (Baylis, 1932; Yevstafieva *et al.*, 2018) However, other studies further revealed that the vulva structure cannot be used as a distinguishing morphological character for species differentiation of *T. globulosa* from *T. ovis* (Callejón *et al.*, 2015a). Thus, the vagueness of morphological characters and overlap of morphometrical measurements render species identification challenging. Additionally, the existence of *T. globulosa* and *T. ovis* in similar host can further complicate morphological identification due to host induced variation and phenotypic plasticity.

With the challenges in morphological identification, molecular genetic markers have aided in *Trichuris* species identification and investigated genetic variability among different hosts. These include the mitochondrial Cytochrome *c* oxidase subunit I (*COI*), Cytochrome *b* (*cytB*), 16S ribosomal RNA (rRNA), complete mitochondrial genomes, and the nuclear Internal transcribed spacer 1 and 2 regions (ITS1 and ITS2) (Callejón, 2012; Callejón *et al.*, 2015b; Hawash *et al.*, 2015; Rivero *et al.*, 2020; Rivero *et al.*, 2022). Among *T. globulosa* and *T. ovis* isolated from sheep and goats, Oliveros *et al.* (2000) revealed that these two species are synonymous using the ITS2 region (Oliveros *et al.*, 2000). However, through a morphobiometrical and molecular study using the mitochondrial *COI* and *cytB* markers, it was concluded that *T. globulosa* constitute a different genetic lineage to *T. ovis* (Callejón *et al.*, 2015b). Additionally, Salaba *et al.* (2013) revealed that specimens initially morphologically

identified as *T. globulosa* were later molecularly identified as *Trichuris discolor* using the nuclear ITS regions (Salaba *et al.*, 2013)

Here, to increase the clarity for the species status of *T. globulosa*, three mitochondrial genetic markers (*COI*, 12S and 16S rRNA) and the nuclear ITS2 region were used for the molecular identification of *Trichuris* species from *Camelus dromedarius* (Arabian camel) in Kuwait. Through molecular analyses, we provide phylogenetic evidence to suggest a probable *Trichuris* species complex with the specimens obtained from *Camelus dromedarius* and suggest that the morphology of the male spicule sheath is not a reliable character for species discrimination.

Materials and methods

Morphological measurements and identification

Fifteen *Trichuris* males obtained after necropsy of three *Camelus dromedarius* hosts from a slaughterhouse in Kuwait were used as representative specimens for morphological and molecular identification. *Trichuris* males were selected as representatives for this study as the morphological characters are useful for species identification. In the Department of Helminthology, Faculty of Tropical Medicine, Mahidol University, Bangkok, Thailand, individual specimens were washed thoroughly in sterile distilled water, and morphological measurements of the body length and body width were obtained using a stereomicroscope (Olympus SZ51). The posterior and anterior portion of each specimen was separated, and the posterior portion was subsequently mounted on a microscope slide with lactophenol. Under an inverted compound microscope (ZEISS Primovert), morphological measurements and characters of the posterior portion (spicule length and width, spicule sheath shape, spicule sheath length and width) were observed following Callejón *et al.* (2015a). The middle portion of the specimen that was not mounted in lactophenol was maintained in 70% ethanol and –20

°C for preservation prior to molecular identification.

Molecular identification and phylogenetic analyses

Genomic DNA extraction and PCR amplification

Each specimen was individually washed in sterile water and transferred into a 1.7 ml microcentrifuge tube. Total genomic DNA (gDNA) was extracted using the DNeasy® Blood & Tissue kit (Qiagen, Hilden, Germany) following the manufacturer's recommendations.

PCR amplification was performed for four genetic markers – the mitochondrial *COI*, 12S rRNA, 16S rRNA genes, and the nuclear ITS2 region. A T100™ thermocycler (Bio-Rad, USA) was used for amplification with a final PCR volume of 30 µl. Each reaction contained 15 µl of 2X i-Taq™ mastermix (iNtRON Biotechnology, Gyeonggi, South Korea), 5 to 10 µm of each primer, and 2 µl of template DNA. The thermocycling profiles and primers used follow the protocol by Callejón *et al.* (2015a) for the *COI* gene and ITS2 region, while the protocol for the mitochondrial 12S and 16S rRNA genes follow Chan *et al.* (2020) (Callejón *et al.*, 2015a; Chan *et al.*, 2020). Amplicons were visualized on 1% agarose gel stained with SYBR™ Safe (Life Technologies, USA). Successful amplicons were purified with the Geneaid PCR Purification kit (Geneaid Biotech Ltd, Taipei, Taiwan) using the manufacturer's recommendations. The purified DNA samples were sent for Sanger sequencing by Macrogen (Seoul, South Korea) with the same primers used for PCR amplification.

Phylogenetic analyses

Electropherograms obtained after Sanger sequencing were checked using Bioedit 7.0, and the sequences were aligned using ClustalX 2.1 with reference *Trichuris* and *Trichinella* (used as outgroup) sequences obtained from the NCBI database (Hall, 1999; Thompson *et al.*, 2002). The reference sequences used are presented in Supplementary Table 1. The aligned sequences

were checked in Bioedit 7.0 and used to construct neighbor-joining (NJ) and maximum likelihood (ML) phylogenetic trees in MEGA X (Kumar *et al.*, 2018). NJ phylogenetic tree construction used the pairwise nucleotide distance (*p*-distance) model while the ML phylogenetic tree used a best fit nucleotide substitution model with 1000 bootstrap iterations for tree support. FigTree 1.3.1 was used for phylogenetic tree aesthetics (Rambuat, 2009). The sequences obtained in this study with their NCBI accession numbers, and their corresponding specimen and host identity numbers are listed in Table 1.

Genetic distance calculation was performed in MEGA X, where the *p*-distance values for each genetic marker were calculated using the aligned sequences (Kumar *et al.*, 2018). The values were converted into percentage distance based on sequence dissimilarity.

Statistical analysis of morphological measurements

Statistical analysis of the morphological measurements was performed to determine the suitability of the morphological characters for identification between the two molecular groups (based on the results after molecular identification, two molecular groups were identified). The seven morphological characters used were – posterior body length, posterior body width, spicule length, spicule width, spicule width at the proximal, spicule sheath length, and the maximum spicule sheath width. Comparisons between groups for each morphological character were visualized with a boxplot. The suitability of the characters was then examined by the statistical significance in the means between the two groups using either the Mann-Whitney or the independent T test (depending on whether the data was normally distributed). A *P*-value of <0.05 indicates that the means were significantly different. All statistical analysis and boxplot visualization was performed in R studio version 1.2.5033 (RStudio Team, 2021).

Results

Morphology of Trichuris male spicule sheath

The specimens obtained from Arabian camels were morphologically identified as *Trichuris*, with morphological variations observed in the male spicule sheath. The two different types of spicule sheaths are – one type presents the globular posteriorly truncated swelling (Figures 1a and 1b), while the second type does not present a globular posteriorly truncated swelling (Figures 1c and 1d). Specimens with both types of spicule sheath were present in host T5, whereas host T3 and T4 only had specimens with the spicule that did not present a globular posteriorly truncated swelling.

Molecular identification of Trichuris species from camels

Based on the molecular phylogenies of the *Trichuris* specimens obtained from camels, the specimens fell into two distinct clusters using the mitochondrial *COI*, 12S rRNA, and 16S rRNA genes. The phylogenies across the three mitochondrial genetic markers were congruent, revealing two distinct genotypes with strong bootstrap support. Figures 2 to 4 present the phylogenies inferred from the mitochondrial genetic markers. In the first cluster (group 1), the specimens were phylogenetically placed together with *T. globulosa*, while in the second cluster (group 2), the specimens were closely placed with *T. ovis*. Additionally, three *Trichuris* specimens isolated from the same host (T5) were found in group 1 and group 2. Of the nine specimens isolated from T5, five were phylogenetically placed in group 1 while four were in group 2. Conversely, no distinct groups were obtained based on the nuclear ITS2 phylogeny (Figure 5). All 15 specimens were clustered together with the reference *T. globulosa* sequences, with *T. ovis* in a separate clade.

Compared among the other *Trichuris* species, the nuclear and mitochondrial phylogenies obtained showed that *T. discolor* was a sister group to *T. globulosa* and *T. ovis*,

supporting a clade of *Trichuris* species belonging to ruminants.

Genetic variability among Trichuris globulosa

As shown in Table 2, the genetic distance obtained from the ITS2 region ranged from 0 to 0.49 % within our *Trichuris* specimens and the reference *T. globulosa* sequences, while the genetic distance between *T. globulosa* and *T. ovis* ranged from 3.47 % to 3.96 %. For the mitochondrial genetic markers, genetic distances between groups 1 and 2 ranged from 6.32 % to 7.42 % with the *COI* gene. The genetic distances for the 12S and 16S rRNA genes were smaller, ranging from 3.03 % to 3.86 % and 1.35 % to 2.70 % respectively. Within group genetic distances were also smaller than between group genetic distances for each of the mitochondrial genetic markers.

Comparison of morphological characters between groups 1 and 2

Based on the molecular results from the *Trichuris* specimens obtained in this study, two molecular groups were present. Table 3 presents the morphological characteristics and measurements of the *Trichuris* specimens used in this study, divided based on their molecular groupings. Of the seven morphological characters that had continuous data, statistical analysis revealed that there was significant difference ($P = 0.038$) between the means of the spicule sheath length, with group 1 averaging a length of 0.656 mm and group 2 with 0.364 mm (Figure 6). No statistical significance was observed with the other six morphological characters.

Additionally, both types of male spicule sheath were found in each molecular group. The morphological variations of the male spicule sheath did not corroborate with the molecular phylogenies, thus limiting the use of the male spicule sheath as a diagnostic character for species identification of *T. globulosa*.

Discussion

Our findings demonstrated the use of the mitochondrial *COI*, 12S rRNA, 16S rRNA genes, and the nuclear ITS2 region for molecular identification of *Trichuris* from *Camelus dromedarius*. Two distinct clusters of *Trichuris* were obtained from the mitochondrial phylogenies (group 1 closer to *T. globulosa* while group 2 closer to *T. ovis*), providing molecular evidence of a possible *T. globulosa* species complex. Also, two forms of male spicule sheath that did not corroborate to molecular data were observed, suggesting the limited use of the male spicule sheath as a morphological character for species identification.

Molecular evidence of possible T. globulosa species complex

With the *T. globulosa* specimens obtained in this study, molecular phylogenies suggest the possibility of a *T. globulosa* species complex. Firstly, the phylogenies obtained from the mitochondrial genes revealed two distinct clusters within *T. globulosa*. Secondly, no distinction between groups 1 and 2 was observed in the nuclear ITS2 phylogeny.

The species status of *T. globulosa* has been questioned by some authors, with mitochondrial genetic markers revealing that *T. globulosa* and *T. ovis* are different species, while morphology, isoenzymatic, and the nuclear ITS2 region support the synonymy of both species (Cutillas *et al.*, 1995; Oliveros *et al.*, 2000). Based on the nuclear ITS2 region, Oliveros *et al.* (2000) demonstrated that no sequence variation was present between *T. ovis* and *T. globulosa* isolated from sheep and goats (Oliveros *et al.* 2000). Contrarily, using the mitochondrial *cytB* and *COI* genes, Callejón *et al.* (2015a) showed that *T. globulosa* isolated from *C. dromedarius* in Iran and *T. ovis* isolated from *Ovis aries* in South Africa were two distinct species (Callejón *et al.*, 2015a) Moreover, the overlap in morphological characters such as spicule lengths and size between the two species render accurate species identification challenging (Knight, 1974; Callejón *et al.*, 2015a).

Here, with the two distinct groups present based on the mitochondrial genetic markers, the *T. globulosa* specimens obtained from this study could present a possible species complex. Specimens obtained from the same host were also found in groups 1 and 2. Moreover, specimens from each group could not be differentiated based on their morphological characters. Species complexes are no stranger among helminths, and molecular evidence has also facilitated the discovery of closely related species that are morphologically similar but genetically different (Callejón *et al.*, 2013; Xie *et al.*, 2018). Among *Trichuris*, Rivero *et al.* (2021) revealed the presence of two different genotypes corresponding to different lineages within *Trichuris trichiura* obtained from humans and non-human primates using the mitochondrial *COI* and *cytB* genetic markers, suggesting the existence of a *T. trichiura* species complex (Rivero *et al.*, 2021). The mitochondrial genetic markers are known to contain high sequence variation for cryptic species delimitation, with the ability to differentiate closely related members within species complexes (Thaenkham *et al.*, 2022). Moreover, they have proven to be useful for *Trichuris* species differentiation in instances where specimens were unable to be morphologically identified to the species level (Callejón *et al.*, 2016; Di Filippo *et al.*, 2020). Contrarily, although the nuclear ITS2 region can be used for species differentiation, the genetic marker is relatively conserved among members of species complex and closely related species partly due to concerted evolution in play (Thaenkham *et al.*, 2022). Likewise, low levels of sequence variation were observed for our specimens using the ITS2 region, with no distinction between group 1 and group 2, supporting the possibility that the two groups are genetically closely related. Also, genetic differences obtained using the full length ITS2 region between *T. globulosa* and *T. ovis* ranged from 3.47 % to 3.96 %, disagreeing with previous studies suggesting that *T. globulosa* and *T. ovis* are synonymous.

Through congruence of the mitochondrial phylogenies supporting distinction between the two groups of *T. globulosa*, insufficient ITS2 sequence variation to differentiate between

groups, along with the complicated species status between *T. globulosa* and *T. ovis* based on previous studies, a species complex is thus plausible.

Limited use of morphological characters for T. globulosa species identification

From the *T. globulosa* specimens used in this study, two morphological variations of the male spicule sheath were observed, and they did not correspond to the groups based on the mitochondrial phylogenies (group 1 and 2). The shape and spines of the male spicule sheath has been used as a criterion distinguishing *T. globulosa* from other *Trichuris*, particularly with the closely related *T. ovis* (Sarwar, 1945; Cutillas *et al.*, 1995). Previous studies have reported that *T. globulosa* isolated from camels, sheep and goats presents a male spicule sheath with a globular posteriorly truncated swelling with spines on the swelling longer than the rest of the spicule sheath (Sarwar, 1945; Cutillas *et al.*, 1995; Callejón *et al.*, 2015a; Yevstafieva *et al.*, 2018). Cutillas *et al.* (1995) also added that while *T. ovis* does not have a posterior swelling, some may also present a globular posteriorly swelling (Cutillas *et al.*, 1995). However, the spines on the globular posterior swelling are shorter than or equal to the rest of the spicule sheath, rendering *T. ovis* being morphologically different from *T. globulosa*.

Species identification of *Trichuris* using morphological characters is often challenging for taxonomists due to similar and overlapping characters for both males and females. Distinct *Trichuris* genotypes were found from morphologically similar *Trichuris* species isolated from rodents (Robles *et al.*, 2014). For *T. globulosa*, aside from spicule sheath, spicule lengths have also been used as another criterion. However, overlapping lengths have been observed between *T. globulosa* and *T. ovis* (Callejón *et al.*, 2015a). Additionally, assumptions of species identity are often based on the types of hosts that they are found in, but evidence has revealed their capacity to infect wide varieties of hosts for some species. As both *T. globulosa* and *T. ovis* have been found in similar hosts such as camels, sheep and goats, host-induced phenotypic

plasticity can be present, thus limiting the use of morphological characters. Here, with the morphological variations of the male spicule sheath observed among *T. globulosa*, along with their capability to infect various hosts, identification of *T. globulosa* requires reliance on molecular genetic markers for accurate species identification.

Limitations

Firstly, only male *Trichuris* specimens were selected for morphological and molecular analysis in this study. The inclusion of *Trichuris* females in the analysis could provide more information regarding the genetic variation among the *Trichuris* specimens obtained. Secondly, like with any molecular study, the accuracy of species identification is subjected to the accuracy of reference sequences in the database. The sequences included for comparison were thus limited due to the small number of sequences and molecular studies that have been performed on *T. globulosa*. Thirdly, as compared to the phylogeny obtained using the ITS region by Betson *et al.* (2015) and Cavallero *et al.* (2015), *T. suis* and *T. trichiura*, although being morphologically similar and closely related, they each formed their own subclade within the monophyletic clade containing both species (Betson *et al.*, 2015; Cavallero *et al.*, 2015). Contrarily in our ITS2 phylogeny, no genetic difference was observed between the *T. globulosa* group 1 and group 2 specimens. Thus, a nuclear genetic marker from another loci or the whole genome can be utilized to further investigate the phylogenetic relationships among *T. globulosa*. Lastly, as the *Trichuris* specimens were obtained from Arabian camels from the slaughterhouse, sequence variation of *Trichuris* between localities could not be compared.

Conclusion

Mitochondrial phylogenies revealed two groups of *T. globulosa*, while the nuclear ITS2 region did not have sufficient sequence variation to discriminate between the two *T. globulosa* groups.

Molecular evidence thus suggests the possibility of a *T. globulosa* species complex, with potential implications on the administration of the appropriate anthelmintic treatment for ruminants. Additionally, two morphological variations of the male spicule sheath were revealed, suggesting the limited use of the male spicule sheath as a diagnostic character for species identification of *T. globulosa*.

Supplementary material. Supplementary material for this paper can be found at DOI

Acknowledgments. We wish to acknowledge the Department of Helminthology, Faculty of Tropical Medicine, Mahidol University, for technical support, and Dr Ahmad Al-Hamad, Abdulwahab Mosa, Meshal Alruwaili, Sulaiman mal Allah, Abou-Yousef for their support.

Author's contribution. UT and AAA conceived, supervised, and designed the study. AH and AHEC investigated and performed formal analysis. All authors reviewed and edited the article.

Financial support. This research did not receive any specific grant from funding agencies in the public, commercial, and not-for-profit sectors.

Competing interests. The authors declare there are no conflicts of interest.

Ethical standards. Not applicable.

References

- Baylis, HA** (1932) Three notes on parasitic nematodes. *Annals and Magazine of Natural History* **10**, 497-502.
- Betson, M, Soe, MJ and Nejsun, P** (2015) Human trichuriasis: whipworm genetics, phylogeny, transmission and future research directions. *Current Tropical Medicine Reports* **2**, 209-217. doi: 10.1007/s40475-015-0062-y.
- Callejón, R, Halajian, A, de Rojas, M, Marrugal, A, Guevera, D and Cutillas, C** (2012) 16S partial gene mitochondrial DNA and internal transcribed spacers ribosomal DNA as differential markers of *Trichuris discolor* populations. *Veterinary Parasitology* **186**, 350-363. doi: 10.1016/j.vetpar.2011.11.033.
- Callejón, R, Nadler, S, De Rojas, M, Zurita, A, Petrášová, J and Cutillas, C** (2013) Molecular characterization and phylogeny of whipworm nematodes inferred from DNA sequences of *cox1* mtDNA and 18S rDNA. *Parasitology Research* **112**, 3933-3949. doi:10.1007/s00436-013-3584-z.
- Callejón, R, Gutiérrez-Avilés, L, Halajian, A, Zurita, A, de Rojas, M and Cutillas, C** (2015a) Taxonomy and phylogeny of *Trichuris globulosa* Von Linstow, 1901 from camels. A review of *Trichuris* species parasitizing herbivorous. *Infection Genetics and Evolution* **34**, 61-74. doi:10.1016/j.meegid.2015.06.011.
- Callejón, R, Cutillas, C, and Nadler, SA** (2015b) Nuclear and mitochondrial genes for inferring *Trichuris* phylogeny. *Parasitology Research* **114**, 4591-4599. doi:10.1007/s00436-015-4705-7.
- Callejón, R, Robles, MDR, Panei, CJ, and Cutillas, C** (2016) Molecular diversification of *Trichuris* spp. Sigmodontinae (Cricetidae) rodents from Argentina based on mitochondrial DNA sequences. *Parasitology Research* **115**, 2933-2945. doi:10.1007/s00436-016-5045-y.

- Cavallero, S, De Liberato, C, Friedrich, KG, Cave, DD, Masella, V, D'Amelio, S, and Berrilli, F** (2015) Genetic heterogeneity and phylogeny of *Trichuris* spp. from captive non-human primates based on ribosomal DNA sequence data. *Infection, Genetics and Evolution* **34**, 450-456. doi: 10.1016/j.meegid.2015.06.009.
- Chan, AHE, Chaisiri, K, Morand, S, Saralamba, N, and Thaenkham, U** (2020) Evaluation and utility of mitochondrial ribosomal genes for molecular systematics of parasitic nematodes. *Parasites & Vectors* **13**, 364. doi:10.1186/s13071-020-04242-8.
- Chandler, AC** (1930) Specific characters in the genus *Trichuris*, with a description of a new species, *Trichuris tenuis*, from a camel. *The Journal of Parasitology* **16**, 198-206.
- Cutillas, C, German, P, Arias, P, and Guevara, D** (1995) *Trichuris ovis* and *Trichuris globulosa*: morphological, biometrical, and genetic studies. *Experimental Parasitology* **81**, 621-625. doi:10.1006/expr.1995.1159.
- Di Filippo, MM, Berrilli, F, De Liberato, C, Di Giovanni, V, D'Amelio, S, Friedrich, KG, and Cavallero, S** (2020) Molecular characterization of *Trichuris* spp. from captive animals based on mitochondrial markers. *Parasitology International* **75**, 102043. doi:10.1016/j.parint.2019.102043.
- Doležalová, J, Oborník, M, Hajdušková, E, Jirků, M, Petrželková, KJ, Callejón, PR, Jaroš, J, Beránková, Z, and Modrý, D** (2015) How many species of whipworms do we share? Whipworms from man and other primates form two phylogenetic lineages. *Folia Parasitologica (Praha)* **62**, 2015.063. doi: 10.14411/fp.2015.063.
- García-Sánchez, AM, Rivero, J, Callejón, R, Zurita, A, Reguera-Gomez, M, Valero, MA, and Cutillas, C** (2019) Differentiation of *Trichuris* species using a morphometric approach. *International Journal for Parasitology. Parasites and Wildlife* **9**, 218-223. doi: 10.1016/j.ijppaw.2019.05.012.
- Hall, T** (1999) BioEdit: a user-friendly biological sequence alignment editor and analysis

program for Windows 95/98/NT. *Nucleic Acids Symposium*. **41**, 95-98.

Hawash, MBF, Anderson, LO, Gasser, RB, Stensvold, CR, and Nejsun, P (2015)

Mitochondrial genome analyses suggest multiple *Trichuris* species in humans, baboons, and pigs from different geographical regions. *PLoS Neglected Tropical Diseases* **9**, e0004059. doi: 10.1371/journal.pntd.0004059.

Knight, RA (1971) Redescriptions of *Trichuris discolor* (Von Linstow, 1906) and *T. skrjabini*

(Baskakov, 1924) from domestic ruminants in the United States and comparisons with *T. ovis* (Abildgaard, 1795). *The Journal of Parasitology* **57**, 302-310.

Knight, RA (1974) *Trichuris oreamnos* sp. n. from the mountain goat, *Oreamnos americanus*

(Blainville), in British Columbia, Canada, and a key to trichurids in North American ruminants. *The Journal of Parasitology* **60**, 275-279.

Kumar, S, Stecher, G, Li, M, Knyaz, C, and Tamura, K (2018) MEGA X: Molecular

Evolutionary Genetics Analysis across computing platforms. *Molecular Biology and Evolution* **35**, 1547-1549. doi:10.1093/molbev/msy096.

Oliveros, R, Cutillas, C, de Rojas, M, and Arias, P (2000) Characterization of four species

of *Trichuris* (Nematoda: Enoplida) by their second internal transcribed spacer ribosomal DNA sequence. *Parasitology Research* **86**, 1008-1013. doi: 10.1007/pl00008519.

Rambuat, A (2009) FigTree (Version 1.3.1). <http://tree.bio.ed.ac.uk>

Ravasi, DF, O'Riain, MJ, Davids, F, and Illing, N (2012) Phylogenetic evidence that two

distinct *Trichuris* genotypes infect both humans and non-human primates. *PLoS One* **7**, e44187. doi: 10.1371/journal.pone.0044187.

Rivero, J, García-Sánchez, AM, Zurita, A, Cutillas, C, and Callejón, R (2020) *Trichuris*

trichiura isolated from *Macaca sylvanus*: morphological, biometrical, and molecular study. *BMC Veterinary Research* **16**, 445. doi:10.1186/s12917-020-02661-4.

Rivero, J, Cutillas, C, and Callejón, R (2021) *Trichuris trichiura* (Linnaeus, 1771) from

human and non-human primates: morphology, biometry, host specificity, molecular characterization, and phylogeny. *Frontiers in Veterinary Science* **7**, 626120. doi:10.3389/fvets.2020.626120.

Rivero, J, García-Sánchez, AM, Callejón, R, and Cutillas, C (2022) Characterization of *Trichuris* species from porcupine (*Hystrix cristata*) at zoological garden of Spain. *Acta Tropica* **228**, 106276. doi:10.1016/j.actatropica.2021.

Robles, M, Cutillas, C, Panei, CJ, and Callejón, R (2014) Morphological and molecular characterization of a new *Trichuris* species (Nematoda- Trichuridae), and phylogenetic relationships of *Trichuris* species of Cricetid rodents from Argentina. *PLoS One*. **9**, e112069. doi: 10.1371/journal.pone.0112069.

RStudio Team (2021) RStudio: Integrated Development Environment for R. RStudio, PBC, Boston, MA. <http://www.rstudio.com/>

Salaba, O, Rylková, K, Vadlejch, J, Petrtyl, M, Scháňková, S, Brožová, A, Jankovská, I, Jebavý, L, and Langrová, I (2013) First determination of *Trichuris* sp. from roe deer by amplification and sequencing of the ITS1-5.8S-ITS2 segment of ribosomal DNA. *Parasitology Research* **112**, 955-960. doi: 10.1007/s00436-012-3215-0.

Sarwar, MM (1945) Incidence of some nematodes of domestic ruminants in the Punjab and united provinces, with a note on the morphology of *Trichuris globulosa* (V. Linstow). *Proceedings/ Indian Academy of Sciences* **22**, 22.

Sazmand, A, and Joachim, A (2017) Parasitic diseases of camels in Iran (1931-2017) – a literature review. *Parasite* **24**, 21. doi: 10.1051/parasite/2017024.

Thaenkham, U, Chaisiri, K, and Chan, AHE (2022) *Molecular systematics of parasitic helminths*, 1st Edn. Singapore, Springer Nature.

Thompson, J, Gibson, T, and Higgins, D (2002) Multiple sequence alignment using ClustalW and ClustalX. *Current Protocols in Bioinformatics* **Chapter 2**, Unit 2.3. doi:

10.1002/0471250953.bi0203s00.

Wang, Y, Liu, GH, Li, JY, Xu, MJ, Ye, YG, Zhou, DH, Song, HQ, Lin, RQ, and Zhu, XQ

(2012) Genetic variability among *Trichuris ovis* isolates from different hosts in Guangdong Province, China revealed by sequences of three mitochondrial genes. **Mitochondrial DNA** 24, 50-54. doi: 10.3109/19401736.2012.710210.

Xie, Y, Zhao, B, Hoberg, EP, Li, M, Zhou, X, Gu, X, Lai, W, Peng, X, and Yang, G (2018)

Genetic characterization and phylogenetic status of whipworms (*Trichuris* spp.) from captive non-human primates in China, determined by nuclear and mitochondrial sequencing. *Parasites & Vectors* 11, 516. doi: 10.1186/s13071-018-3100-5.

Yevstafieva, VA, Yuskiv, DI, Melnychuk, VV, Kovalenko, VA, and Horb, KO (2018)

Nematodes of the genus *Trichuris* (Nematoda, Trichuridae), parasitizing sheep in central and south-eastern regions of Ukraine. *Vestnik Zoologii* 52, 193-204.

Accepted Manuscript

Table 1. *Trichuris* specimens from *Camelus dromedarius* used for analysis

Host ID	Specimen ID	NCBI accession number			
		<i>COI</i>	12S	16S	ITS2
T3	T3-7M	OQ535010	OQ550226	OQ534994	OQ550211
	T3-8M	OQ535011	OQ550227	OQ534995	OQ550212
	T3-9M	OQ535012	OQ550228	OQ534996	OQ550213
T4	T4-7M	OQ535013	OQ550229	OQ534997	OQ550214
	T4-8M	OQ535014	OQ550230	OQ534998	OQ550215
	T4-9M	OQ535015	OQ550231	OQ534999	OQ550216
T5	T5-8M	OQ535016	OQ550232	OQ535000	OQ550217
	T5-9M	OQ535017	OQ550233	OQ535001	OQ550218
	T5-10M	OQ535018	OQ550234	OQ535002	OQ550219
	T5-11M	OQ535019	OQ550235	OQ535003	OQ550220
	T5-12M	OQ535020	OQ550236	OQ535004	OQ550221
	T5-13M	OQ535021	OQ550237	OQ535005	OQ550222
	T5-14M	OQ535022	OQ550238	OQ535006	OQ550223
	T5-15M	OQ535023	OQ550239	OQ535007	OQ550224
T5-16M	OQ535024	OQ550240	OQ535008	OQ550225	

Table 2. Genetic distance (% difference) comparison between genetic markers for *Trichuris globulosa* and *Trichuris ovis*

Genetic marker/group	<i>COI</i>	12S	16S	ITS2
Group 1	0 – 1.10 (0.48)	0 – 0.55 (0)	0 – 1.35 (1.00)	NA
Group 2	0 – 4.396 (1.18)	0 – 1.93 (1.00)	0 - 0.68 (0)	NA
Group 1 vs Group 2	6.32 – 7.42 (6.82)	3.03 – 3.86 (3.40)	1.35 – 2.70 (2.17)	NA
Groups 1 and 2 vs <i>Trichuris globulosa</i>	NA	NA	NA	0 – 0.49 (0)
Groups 1 and 2 vs <i>Trichuris ovis</i>	NA	NA	NA	3.47 – 3.96 (3.61)

The average genetic distances are indicated in parentheses, and NA indicates not applicable

Accepted Manuscript

Table 3. Morphological measurements of *Trichuris* from each group used in this study

Morphological characters	Group 1	Group 2	p-value
Posterior body length	14.241 (11.684–17.926)	13.070 (9.771–17.461)	0.397
Posterior body width	0.477 (0.336–0.598)	0.424 (0.334–0.563)	0.536
Spicule length	4.003 (3.437–4.575)	3.811 (3.199–5.007)	0.472
Spicule width	0.038 (0.030–0.048)	0.040 (0.030–0.056)	0.679
Spicule width at proximal	0.107 (0.083–0.134)	0.088 (0.066–0.119)	0.088
Spicule sheath length	0.656 (0.447–1.027)	0.364 (0.256–0.508)	0.038*
Spicule sheath width	0.114 (0.058–0.218)	0.103 (0.075–0.242)	0.222
Spicule sheath with no globular posteriorly truncated swelling	T3-7M, T3-8M, T5-9M, T5-12M, T5-15M, T5-16M	T3-9M, T4-7M, T4-8M, T4-9M, T5-8M, T5-10M, T5-13M	NA
Spicule sheath with globular posteriorly truncated swelling	T5-14M	T5-11M	NA

Measurements are given in mm. The mean values are shown, while the minimum and maximum values are in parentheses.

An asterisk (*) indicate statistical significance ($P < 0.05$) between the means of group 1 and group 2.

Figure legends

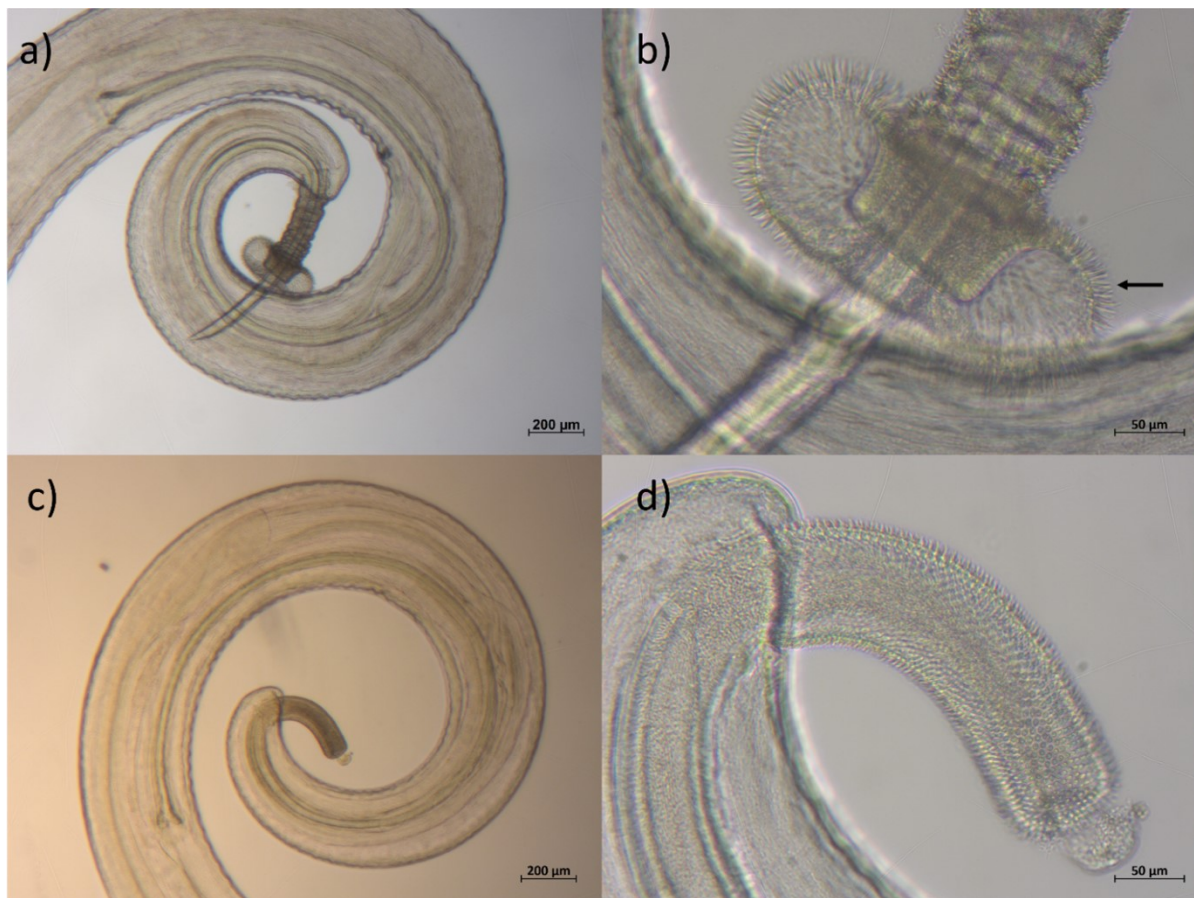


Figure 1. Male spicule sheath morphology of *Trichuris* species from camels. In (a and b), a globular posteriorly truncated swelling with spines on the swelling (indicated by the black arrow) longer than the rest of the spicule sheath is shown. In (c and d), the spicule sheath does not have a globular posteriorly truncated swelling.

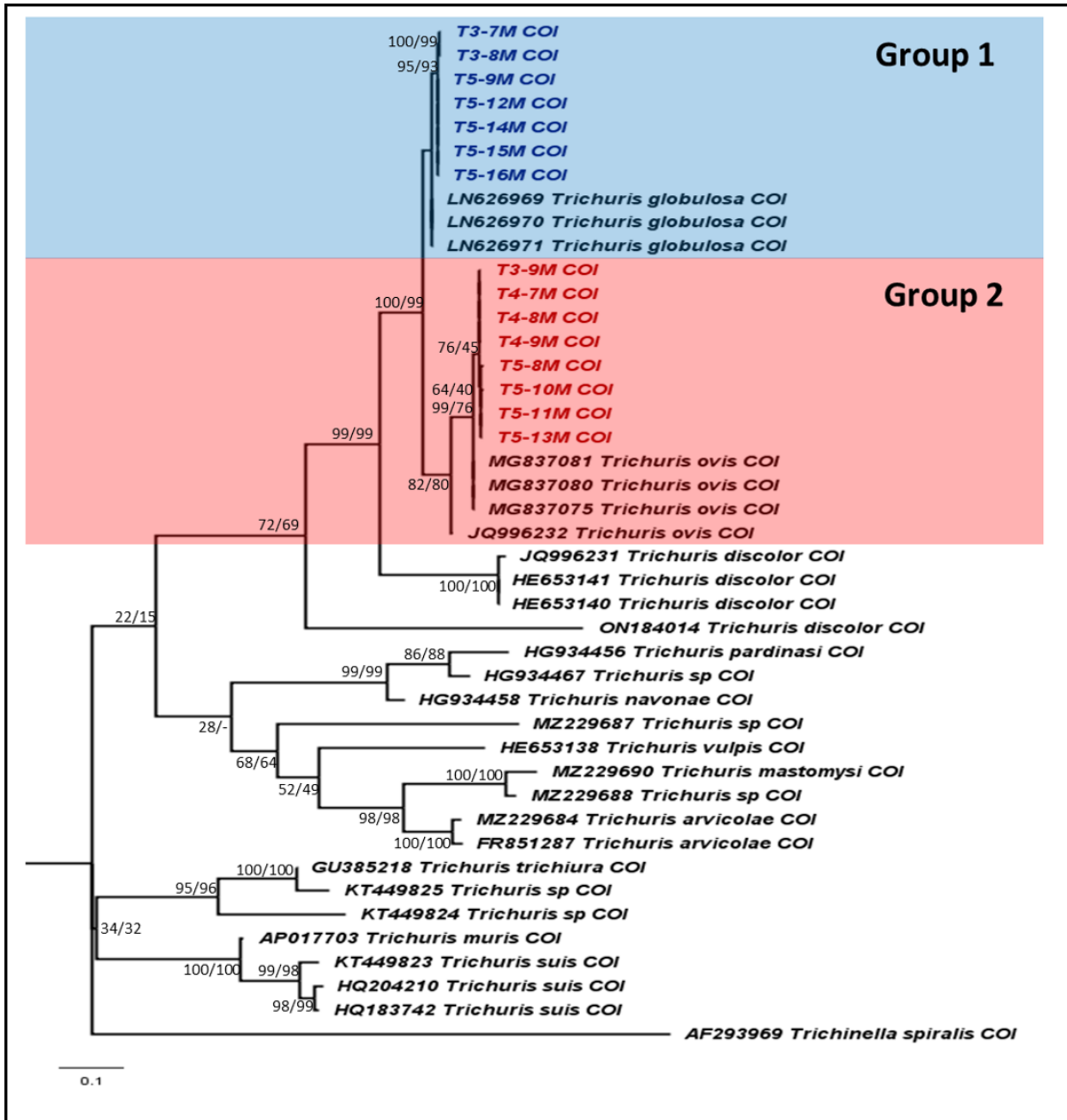


Figure 2. Phylogeny of *Trichuris* spp. based on the mitochondrial *COI* gene. The phylogenetic tree was inferred using the maximum likelihood and neighbor-joining algorithm in MEGA X. The numbers at the nodes indicate bootstrap support obtained through 1000 replications (ML/NJ). *Trichuris* specimens in this study are indicated in blue (group 1) and red (group 2) colors. The final alignment used for phylogenetic tree construction was 390 bp in length.

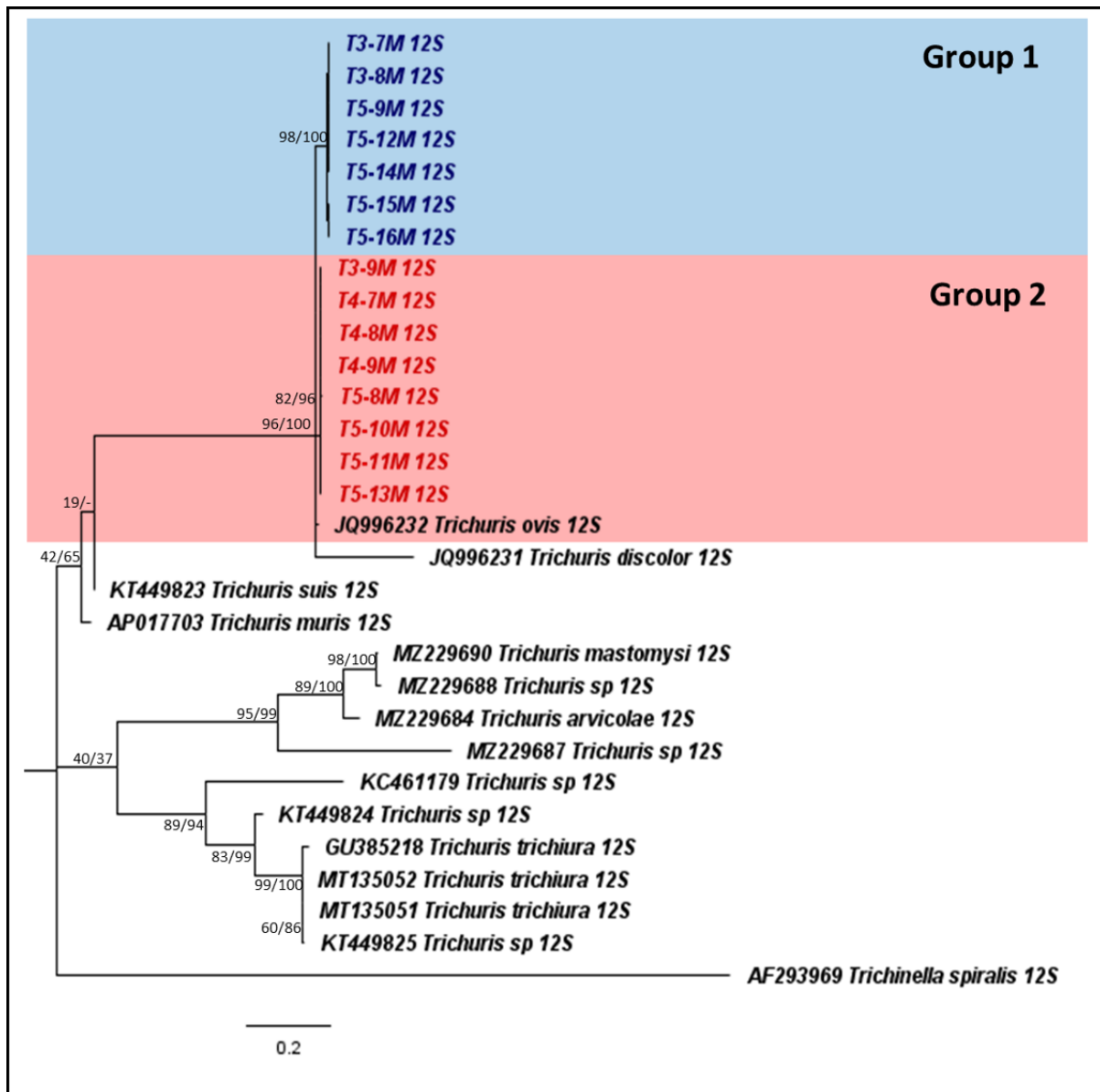


Figure 3. Phylogeny of *Trichuris* spp. based on the mitochondrial 12S rRNA gene. The phylogenetic tree was inferred using the maximum likelihood and neighbor-joining algorithm in MEGA X. The numbers at the nodes indicate bootstrap support obtained through 1000 replications (ML/NJ). *Trichuris* specimens in this study are indicated in blue (group 1) and red (group 2) colors. The final alignment used for phylogenetic tree construction was 420 bp in length.

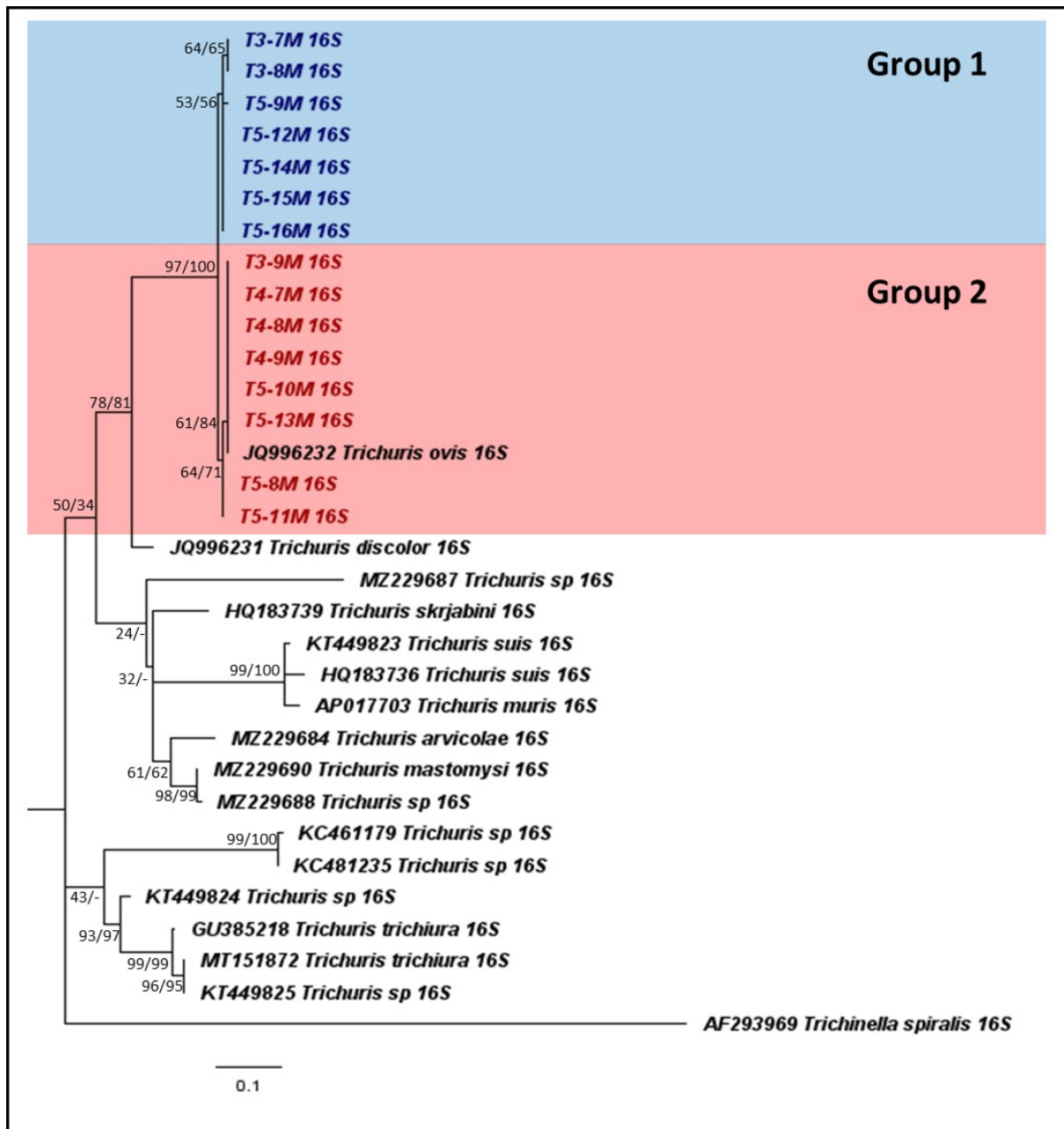


Figure 4. Phylogeny of *Trichuris* spp. based on the mitochondrial 16S rRNA gene. The phylogenetic tree was inferred using the maximum likelihood and neighbor-joining algorithm in MEGA X. The numbers at the nodes indicate bootstrap support obtained through 1000 replications (ML/NJ). *Trichuris* specimens in this study are indicated in blue (group 1) and red (group 2) colors. The final alignment used for phylogenetic tree construction was 190 bp in length.

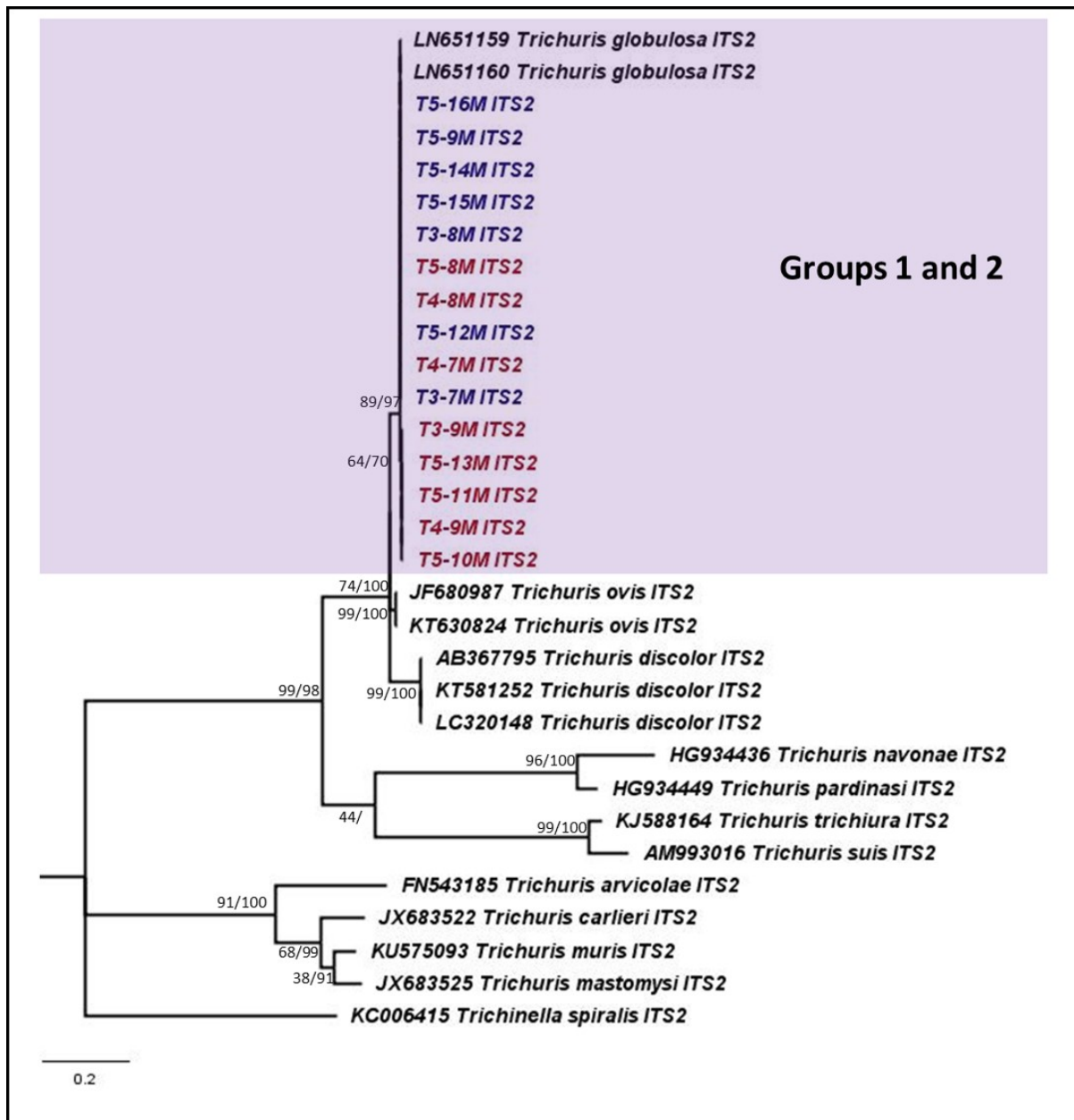


Figure 5. Phylogeny of *Trichuris* spp. based on the nuclear ITS2 region. The phylogenetic tree was inferred using the maximum likelihood and neighbor-joining algorithm in MEGA X. The numbers at the nodes indicate bootstrap support obtained through 1000 replications (ML/NJ). *Trichuris* specimens in this study are indicated in blue (group 1) and red (group 2) colors. The final alignment used for phylogenetic tree construction was 320 bp in length.

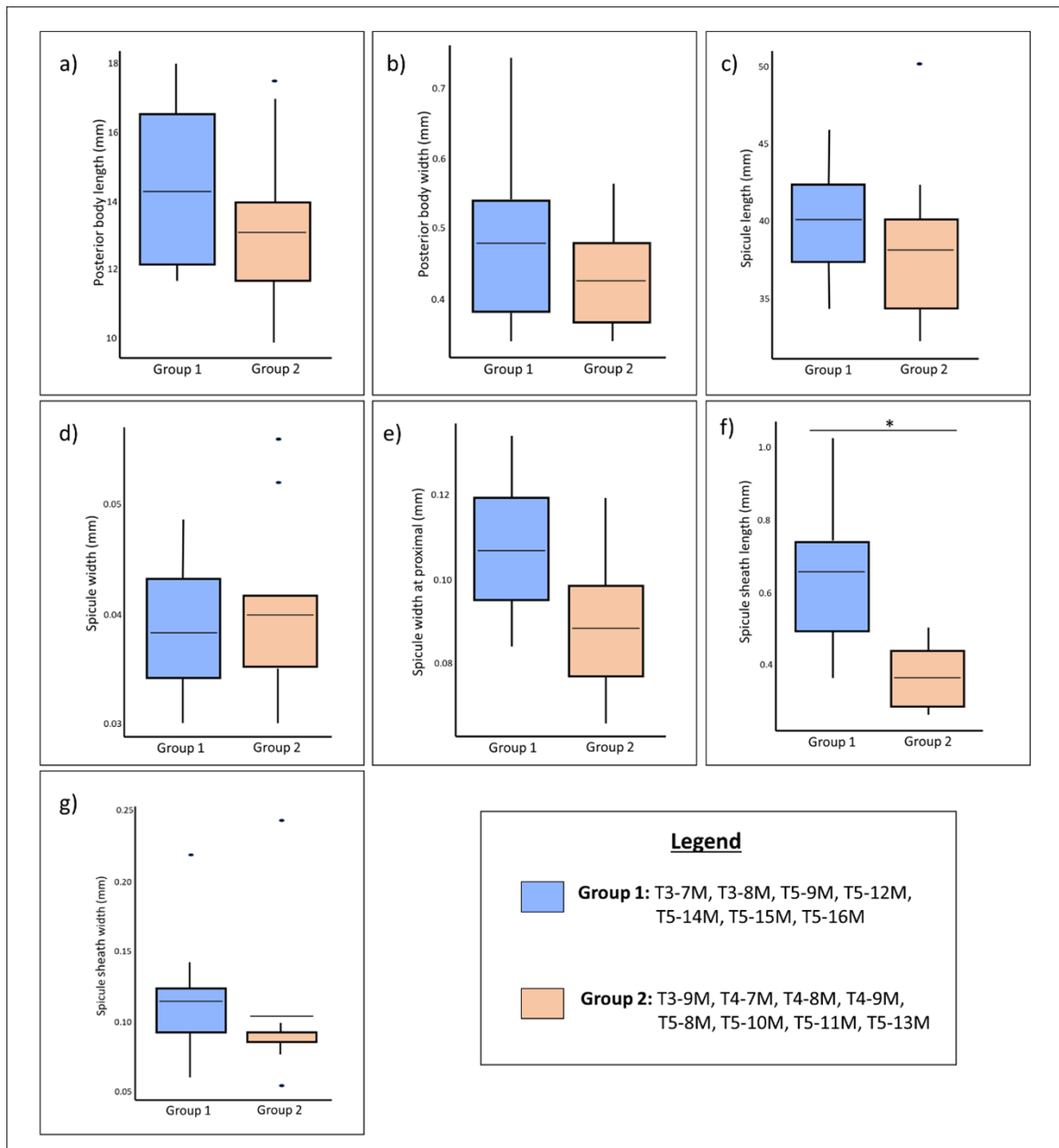


Figure 6. Boxplot of the seven morphological characters of the *Trichuris* specimens. The morphological characters are a) posterior body length, b) posterior body width, c) spicule length, d) spicule width, e) spicule width at proximal, f) spicule sheath length, g) spicule sheath width. An asterisk (*) indicate statistical significance ($P < 0.05$) between the means of group 1 and group 2. The black solid dots indicate outliers. The solid line of the boxplot indicates the mean value obtained from the morphological measurements.