


Ketamine in clinical practice: transitioning from anesthetic agent to psychiatric therapeutic

Jose Manuel Quintero^{1,2}, Rosa Helena Bustos¹ , Sharon Lechtig-Wassermann¹, Stephania Beltran³ and Carlos A. Zarate, Jr.⁴

Review

Cite this article: Quintero JM, Bustos RH, Lechtig-Wassermann S, Beltran S, and Zarate CA, Jr. (2025). Ketamine in clinical practice: transitioning from anesthetic agent to psychiatric therapeutic. *CNS Spectrums*, **30**(1), e51, 1–16.
<https://doi.org/10.1017/S1092852925100333>

Received: 23 March 2025
Accepted: 27 May 2025

Keywords:
anesthetic; antidepressant; recreational drug

Corresponding author:
Rosa Helena Bustos;
Email: rosa.bustos@unisabana.edu.co

¹Department of Clinical Pharmacology, Evidence-Based Therapeutics Group, Faculty of Medicine, Universidad de La Sabana and Clínica Universidad de La Sabana, Chía, Colombia; ²Doctoral Programme of Biosciences, Universidad de La Sabana, Chía, Colombia; ³Faculty of Medicine, Universidad de La Sabana, Chía, Colombia and ⁴Experimental Therapeutics and Pathophysiology Branch, National Institute of Mental Health, National Institutes of Health, Bethesda, MD, USA

Abstract

Ketamine, originally synthesized in 1962, has gained increasing attention due to its rapid and sustained antidepressant effects in treatment-resistant depression (TRD). Unlike traditional antidepressants, ketamine acts on multiple neurotransmitter systems, including NMDA receptor antagonism and AMPA receptor potentiation, offering a novel mechanism for mood regulation. Beyond psychiatry, ketamine remains a valuable anesthetic and analgesic agent with applications in acute and chronic pain management. Its anti-inflammatory, neuroprotective, and potential antitumor properties further underscore its versatility in clinical medicine. Despite its therapeutic promise, ketamine poses challenges due to its dissociative and hallucinogenic effects, contributing to widespread recreational use. Chronic misuse is associated with adverse health outcomes, including bladder dysfunction and hepatobiliary complications. As a result, ketamine has been subject to increasing regulatory scrutiny, balancing its medical utility with concerns about abuse potential. The rediscovery of ketamine's antidepressant effects in the early 2000s has revolutionized psychiatric treatment, particularly in TRD and suicidality. Recent studies have also explored its efficacy in bipolar depression, posttraumatic stress disorder, obsessive-compulsive disorder, and substance use disorders, expanding its therapeutic applications. Additionally, ongoing research aims to elucidate its long-term effects and optimize dosing regimens to maximize clinical benefits while minimizing risks. This review highlights ketamine's multifaceted pharmacological properties, its evolution from an anesthetic to a novel psychiatric treatment, and its broader medical applications. As research advances, a comprehensive understanding of ketamine's mechanisms and clinical implications will be crucial for optimizing its therapeutic potential while mitigating its risks.

Introduction

Ketamine, originally synthesized in 1962, has recently gained significant attention owing to its unique pharmacological properties, particularly its rapid and long-lasting antidepressant effects in patients with treatment-resistant depression (TRD).^{1–3} Its ability to act on multiple neurotransmitter systems distinguishes it from traditional antidepressants, offering new hope to patients who do not respond to conventional therapies.⁴ Beyond its role in mental health, ketamine continues to be valued in medical settings for its anesthetic and analgesic properties.⁵

Despite these promising therapeutic applications, ketamine presents several challenges. Its dissociative and hallucinogenic effects have contributed to its popularity as a recreational drug, particularly among young people in party and club environments.⁶ Prolonged misuse can lead to adverse health outcomes such as bladder dysfunction and cholangiopathy.⁷ The rise in recreational ketamine use since the 1990s has prompted stricter regulations in many countries owing to concerns about abuse potential and the emergence of new analogs with unknown risks.⁸

Nevertheless, ketamine's transformative impact on the treatment of depression and its established role in anesthesia highlight its dual potential as both a critical medical tool and a substance requiring careful regulation. Ongoing research and monitoring are essential to maximize its therapeutic benefits but minimize the risks associated with misuse. In this text, the term ketamine refers to its racemic form (*R,S*-ketamine). References to individual enantiomers are specified as *R*-ketamine (arketamine) or *S*-ketamine (esketamine).

Discovery and development

In the mid-20th century, the quest for safer and more effective anesthetics spurred scientific exploration, culminating in the discovery of phencyclidine (PCP) through the Nobel Prize-

© The Author(s), 2025. Published by Cambridge University Press. This is an Open Access article, distributed under the terms of the Creative Commons Attribution licence (<http://creativecommons.org/licenses/by/4.0>), which permits unrestricted re-use, distribution and reproduction, provided the original article is properly cited.



winning Grignard reaction. Despite its initial promise as a safe anesthetic, PCP frequently induced prolonged delirium and sensory deprivation following surgical recovery.⁹ A significant breakthrough emerged in 1962 when Calvin Stevens of the Parke Davis laboratory synthesized CI-581, later recognized as ketamine, from PCP.¹⁰ Ketamine was derived from PCP with the aim of lessening the serious psychotomimetic/psychodysleptic side effects and abuse potential of the parent drug, which was subsequently removed from the market in 1978.¹¹ Its development was a pivotal moment that marked the inception of ketamine's journey into medical science. Ketamine was first patented in Belgium in 1963 as a veterinary anesthetic. As early as 1964,¹² Dr. Edward Domino and Dr. Guenter Corssen had initiated the first clinical investigations of ketamine, outlining its distinctive properties and effects in 20 male prisoners. Their observations revealed that subjects exhibited wakefulness with intact reflexes but remained unresponsive to sensory stimuli. After being patented by Parke-Davis for human and animal use in 1966, ketamine became available by prescription in 1969 as ketamine hydrochloride, under the name Ketalar. Ketamine was approved by the U.S. Food and Drug Administration (FDA) as a dissociative, rapid-acting, IV anesthetic in 1970¹³ and has been used in both human and veterinary medicine since then. Its approval was based on its rapid onset of action, favorable safety profile, and minimal respiratory depression compared with other anesthetic agents. Initially, it was approved solely as an anesthetic agent for diagnostic and surgical procedures.¹² Although the World Health Organization (WHO) placed ketamine on its list of essential medications in 1985—where it has remained ever since—its use as a general anesthetic began to decline in clinical practice in the 1980s, mainly due to its psychotropic effects, such as hallucinations, dissociation, and emergence delirium during anesthetic recovery.¹⁴

Despite its waning popularity in medical circles, ketamine's journey took an unexpected turn in the 1970s with the emergence of reports suggesting a "psychedelic effect" associated with subanesthetic doses.¹⁵ This revelation catalyzed its transition into a recreational substance, marking the genesis of its association with the burgeoning rave culture of the 1980s.¹² Ketamine swiftly assumed various street names and became a staple "club drug," leading to its classification as a Schedule III substance.¹⁰ The early 1980s witnessed the advent of the "emergence phenomenon," characterized by heightened illicit usage and a subsequent departure from mainstream medical applications.¹² However, the 1990s heralded a resurgence in ketamine's medical utility, fueled by a deeper comprehension of its mechanism of action and therapeutic efficacy.¹⁰

The turn of the millennium ushered in a new era for ketamine, marked by the pioneering work of Zarate *et al.*, which were the first to use ketamine as an antidepressant in patients with TRD.¹⁶ Concurrently, continuous ketamine infusions gained traction as a management strategy for complex regional pain syndrome (CRPS) thanks to the groundbreaking efforts of various research groups.^{17,18} However, this period was not without regulatory interventions, as evidenced by ketamine's reclassification from Schedule H to Schedule X in 2013 under the Drugs and Cosmetics Act. This legislative maneuver sought to curb its misuse and restrict access.¹²

Contributions to medicine

Ketamine remains indispensable in anesthesia, with established roles as a sedative, amnestic, and analgesic agent. Strong evidence supports its efficacy in managing traumatic brain injury,¹⁹ acute pain,²⁰ and chronic pain.²¹ Ketamine's clinical applications have

since expanded to encompass its neuroprotective,^{22,23} anti-inflammatory^{24,25} and antitumor properties.^{26,27} However, limited data exist regarding its use in conditions such as elevated intraocular pressure, cancer pain, and critical care settings, highlighting the need for further research to fully elucidate its clinical utility.²⁸

The seminal work of Skolnick and Trullas (1990),²⁹ who first suggested that the glutamatergic system might play a role in depression, laid the foundation for subsequent research in this area. One early study of 29 patients with treatment-resistant schizophrenia found that ketamine improved depressive inhibition and apathetic-abulic states without significant side effects.³⁰ Lv *et al.* later demonstrated that ketamine induces persistent reconfiguration of brain networks, notably by downregulating connectivity in reward circuits, counteracting depressive alterations, and highlighting targets for circuit-specific therapeutics.³¹ This evolution exemplifies the dynamic interplay between scientific discovery, clinical applications, and societal acceptance.

In recent years, research regarding the multifaceted therapeutic potential of ketamine has increased. As noted above, Zarate *et al.* pioneered its use in TRD, where it demonstrated rapid and robust antidepressant effects.¹⁶ Specifically, ketamine was found to exert its antidepressant effects within hours compared to weeks to months typically required by traditional antidepressants such as selective serotonin reuptake inhibitors and tricyclic antidepressants. These findings were later extended to bipolar depression by Diazgranados *et al.*³² and Zarate *et al.*³³ Further studies from Lally *et al.* highlighted ketamine's impact on anhedonia,³⁴ suggesting broader applications beyond mood disorders.³⁵ In parallel, Price *et al.* at Mount Sinai investigated ketamine's efficacy in reducing suicidal ideation³⁶; given that ketamine acts within a few hours rather than within weeks, its potential use as a rapid-acting antidepressant for patients at high suicidal risk has significant public health implications.¹³ Other studies have explored ketamine's potential for treating posttraumatic stress disorder (PTSD),³⁷ obsessive-compulsive disorder,³⁸ cocaine and alcohol use disorders,³⁹ and social anxiety disorders,⁴⁰ reflecting its expanding therapeutic applications. Ongoing research is also currently exploring ketamine's potential for sustained antidepressant effects.^{41,42}

Pharmacology of ketamine

Although ketamine primarily exerts its effects through non-competitive N-methyl-D-aspartate (NMDA) receptor antagonism, its mechanism of action extends beyond NMDA receptor antagonism,⁴³ to include downstream effects on α -amino-3-hydroxy-5-methyl-4-isoxazolepropionic acid (AMPA) receptor activation⁴⁴ brain-derived neurotrophic factor (BDNF) signaling,⁴⁵ and synaptic plasticity,⁴⁶ reflecting a complex neurobiological cascade.

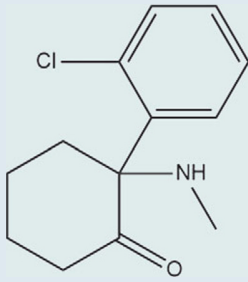
Chemistry and mechanism of action

Ketamine is a phenylcyclohexylamine derivative (mol. wt. = 237.73) consisting of two optical enantiomers, (S)- and (R)-ketamine.²⁴ Used as a chlorhydrate in a slightly acid (pH 3.5–5.5) aqueous solution, ketamine sometimes includes benzethonium chloride or chlorobutanol as preservatives.⁴⁷ The neuropharmacology of ketamine is complex and detailed below (Table 1).

Pharmacokinetics

ABSORPTION: Ketamine, which is both water- and lipid-soluble, can be administered through various routes, including oral, intranasal,

Table 1. Chemical description and structural relationship activity of ketamine^{48–50}

Ketamine	
Chemical structure	
Chemical name	2-(2-chlorophenyl)-2-(methylamino)cyclohexan-1-one
Synonyms	Ketalar, Kalipsol, Ketamine Hydrochloride, Ketanest
Molecular formula	C ₁₃ H ₁₆ ClNO
Molecular weight	237.72 g/mol
Melting point	260 °C
Stereochemical description	Ketamine belongs to the arylcyclohexylamine class of compounds. The structure of ketamine contains a chiral center, with two optical isomers (enantiomers): (S)- and (R)-ketamine. These enantiomers exhibit different potencies and pharmacokinetics, with R-ketamine being less potent than S-ketamine. The cyclohexanone ring and the amino group at position 2 of the cyclohexanone ring are crucial for its anesthetic effect. Ketamine increases its solubility in its hydrochloride salt form.

sublingual, rectal, intramuscular, subcutaneous, intraosseous, intravenous, and inhaled. Oral administration results in significant first-pass metabolism, producing norketamine and dehydronorketamine. Rectal administration acts more quickly and is often used in children. Recreational use typically involves inhalation (insufflation).⁵¹

BIOAVAILABILITY: Systemic clearance is 60–147 L/h/70 kg, which equals the liver blood flow, explaining the low bioavailability of oral ketamine (only 8–24%).⁵² By intravenous (I.V.) route, ketamine reaches its receptors very quickly with a transfer half-life of less than 1 min. Intramuscular ketamine administration has high bioavailability (93%), with a plasma peak obtained in 5 min. However, its bioavailability is limited (20%) because of hepatic metabolism. The intrarectal and intranasal bioavailability of ketamine are ~25 and ~50%, respectively. The concentration peak occurs in 20–30 min after oral ingestion.⁴⁷

DISTRIBUTION: After systemic absorption, ketamine is rapidly distributed into the brain and other well-perfused tissues. Ketamine exhibits lipophilic properties that contribute to its pharmacokinetic profile. Pharmacokinetic analyses of ketamine revealed a biphasic elimination profile characterized by alpha and beta half-lives. Alpha half-life refers to the initial distribution phase, during which ketamine is rapidly redistributed from the bloodstream to highly perfused tissues, including the brain. In contrast, the beta half-life represents the elimination phase during which ketamine is metabolized and excreted from the body. These distinct phases help explain ketamine's rapid onset of action and relatively short duration of effect following its intravenous administration. The alpha half-life ranges from approximately 5–17 min, while the beta half-

life varies from around 180 min in healthy volunteers undergoing surgery to 300 min in critically ill patients. Distribution volume during the beta phase is about 5 L/kg in healthy surgical patients and increases to 16 L/kg in critically ill individuals. Clinically, this results in an immediate onset of action, with the peak analgesic effect (and associated elevation in blood pressure) occurring in less than 5 min. The duration of analgesia is typically under 5 min for doses ≤0.125 mg/kg, extending to 10–20 min with higher doses.⁵³ A short alpha half-life and a short context-sensitive half-time are consistent with rapid recovery after intravenous ketamine anesthesia. It has a short alpha half-life (2–4 min) and a longer beta half-life (2–4 h) in humans. Plasma protein binding of ketamine is low (10–30%).⁵²

METABOLISM:

- 10–30% binding to plasma proteins.
- High liposolubility, 5 times higher than thiopental; hence, its extensive distribution.
- Distribution volume: at steady state is around 200 l 5, or 2.3 l/kg
- Mostly metabolized to norketamine (80%), an active metabolite that is itself principally hydroxylized in 6-hydroxy-norketamine (15%), finally excreted in bile and urine after glucuronidation.

Ketamine's primary metabolic pathway involves N-demethylation by CYP3A4, producing the active metabolite norketamine, which retains anesthetic and some psychoactive effects. This helps maintain therapeutic efficacy even at lower ketamine blood levels. Both ketamine and norketamine undergo hydroxylation at carbons 3–6 of the cyclohexanone ring, forming inactive free and glucuronidated hydroxylated derivatives that are more water-soluble and easily excreted in urine.⁵¹

The average steady-state plasma concentration necessary to achieve anesthesia with ketamine was reported to be 2200 ng/ml, or 9.3 μM. Oral (500 mg) or intrarectal (8–15 mg/kg) administration of ketamine suffice to induce sedation and/or general anesthesia in humans. Moreover, waking from ketamine-induced anesthesia occurs at plasma concentrations ranging from 640 to 1100 ng/ml or 2.7–4.7 μM.⁵⁴

Elimination: The elimination half-life is between 2 and 4 h for ketamine and its metabolites. Dehydronorketamine (DHNK) and (2R,6R)-hydroxynorketamine (HNK) were still detectable (>4 ng/ml) 1-day post-ketamine infusion (0.5 mg/kg i.v. over 40 min) in patients.^{24,55} Elimination of ketamine primarily occurs via the kidneys, though unchanged ketamine accounts for only a small percentage in the urine.⁵⁶

NMDA-dependent mechanism

Ketamine primarily exerts its effects through noncompetitive NMDA receptor antagonism, reducing excitatory neurotransmission.^{57,58} NMDA receptor blockade also activates downstream pathways involved in synaptic plasticity and mood regulation, contributing to ketamine's antidepressant effects.⁵⁹ Its main mechanism involves noncompetitive blocking of the NMDA receptor's calcium channel, which is key to its anesthetic and analgesic effects in the central nervous system (CNS) and spinal cord. Additionally, ketamine reduces presynaptic glutamate release.⁶⁰ Ketamine, along with other NMDA receptors, binds to the PCP site within the receptor's channel, reducing the time the channel remains open. This decreases the response amplification to repeated stimuli, which is linked to CNS sensitization. This "wind up" effect is considered an elementary form of CNS desensitization.⁶¹ Ketamine also binds to a second site on the NMDA receptor's hydrophobic

domain, reducing the frequency of channel openings and acting as an allosteric antagonist. It specifically targets the NR2B subunit of the receptor, which is involved in emotional perception and pain memory.⁶² Ketamine may also inhibit nitric oxide synthase, contributing to its analgesic and anesthetic effects.⁴⁷ Additionally, it can inhibit eukaryotic elongation factor 2 kinase, leading to increased production of BDNF, which enhances synaptic connectivity in the cortex, hippocampus, and nucleus accumbens (NAc). Chronic stress, however, reduces the number of postsynaptic

NMDA and AMPA receptors in these regions, weakening synaptic strength.⁶³ Ketamine administration quickly counteracts these effects by boosting postsynaptic glutamate activation, increasing neurotrophic signaling, and promoting protein synthesis, all of which help restore synaptic connectivity for prolonged periods⁶⁴ (Figure 1).

With regard to the mechanism of action of NMDA receptors, the main inhibitory neurotransmitter, gamma-aminobutyric acid (GABA), activates ionotropic receptor subtypes GABA_A and

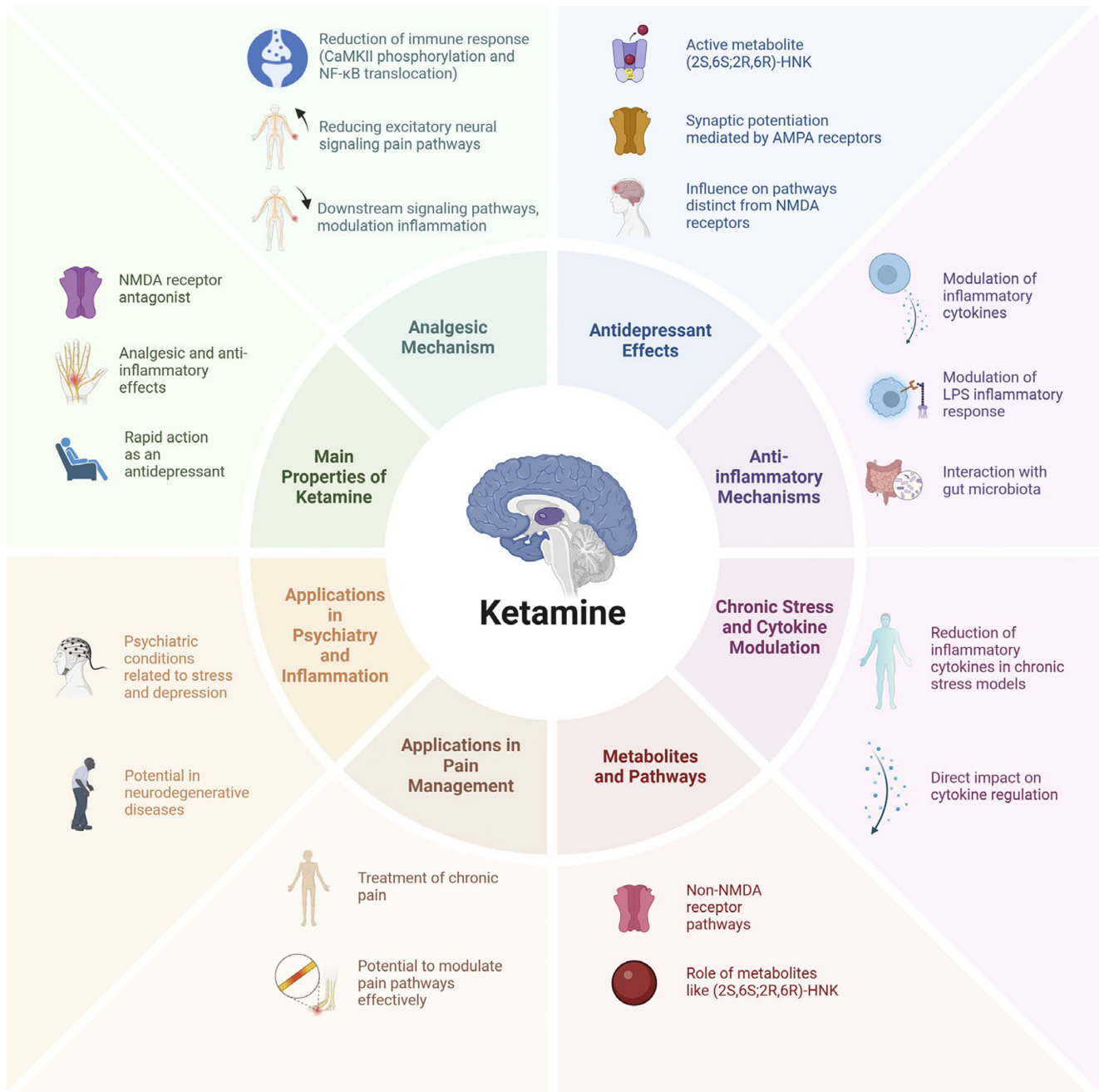


Figure 1. Mechanisms, properties, and applications of ketamine. This figure summarizes the main pharmacological properties, mechanisms of action, and clinical applications of ketamine. The central panel highlights its primary properties, including its role as an NMDA receptor antagonist, its rapid antidepressant effects, and its analgesic and anti-inflammatory properties. The surrounding sections describe key mechanisms such as its analgesic effects (modulation of excitatory neural signaling and inflammatory pathways), antidepressant effects (synaptic potentiation via AMPA receptors and actions of active metabolites such as (2S,6S;2R,6R)-HNK), and anti-inflammatory mechanisms (modulation of cytokines, interaction with gut microbiota, and LPS inflammatory response). Additionally, the figure illustrates ketamine's role in regulating cytokine levels under chronic stress conditions, its metabolic pathways involving non-NMDA receptor targets, and its applications in psychiatry, inflammation, and pain management. These multifaceted actions contribute to its emerging therapeutic potential beyond anesthesia.

GABA_C, as well as the metabotropic receptor subtype GABA_B in the brain.⁶⁵ Electrophysiological studies have shown that high concentrations of ketamine enhance GABAergic inhibitory postsynaptic currents in neurons from guinea pig olfactory cortex and rat hippocampal slices. However, at clinically relevant doses in mice, ketamine does not affect GABA uptake. It has also been found that ketamine can directly open GABA_A receptors, but only at high concentrations that are unlikely to be reached in clinical settings^{24,66} (Figure 1).

Opioid receptors

Emerging evidence indicates that μ -opioid receptors (MORs) play a critical role in mediating the antidepressant effects of ketamine. Preclinical studies have demonstrated that MOR antagonists significantly reduce ketamine behavioral efficacy in rodent models, suggesting that endogenous opioid signaling is necessary for its full therapeutic action.^{67,68} Zanos and Gould, as well as Henter et al., have highlighted MOR involvement as part of a broader network of neurobiological processes underlying ketamine's rapid antidepressant effects.¹¹ Clinical data also supports this interaction. Berman et al. observed mood-elevating and analgesic responses in human subjects, which may be partially attributed to MOR activation.⁶⁹ However, this receptor system is also a key component of reward-related neurocircuitry, raising concerns regarding its potential misuse. Niesters et al. emphasize that ketamine's engagement of MORs could contribute to its reinforcing properties, blurring the line between therapeutic and addictive potential.⁷⁰

In support of this, ketamine has been shown to bind μ -, δ -, and κ -opioid receptors (ORs), although the precise mechanisms underlying its engagement with the endogenous opioid system remain unclear.²⁴ In adult male Sprague–Dawley rats, ketamine enhanced β -endorphin release, which activated μ -ORs in the medial prefrontal cortex (mPFC). This interaction appears to be essential for both behavioral and molecular antidepressant responses. This finding aligns with broader evidence linking MOR activity in the mPFC to ketamine's rapid antidepressant effects.⁷¹ In the context of analgesia, studies in mice have demonstrated that ketamine's analgesic effects are blocked by antagonism of μ - and δ -ORs, but not κ -ORs, within the brain. However, in humans, global opioid receptor blockade with naloxone does not abolish ketamine-induced analgesia, suggesting the involvement of indirect opioid system modulation or receptor-subtype-specific interactions.⁶⁷

Given the dual roles of MORs in therapeutic efficacy and abuse liability, future studies should pursue several key avenues. First, disentangling the precise contribution of MORs from that of other neurotransmitter systems (e.g., glutamatergic and GABAergic) is essential to isolate the mechanisms responsible for antidepressant versus reinforcing effects. The use of selective MOR partial agonists or biased ligands may help to identify compounds that retain antidepressant efficacy with reduced abuse potential. Second, neuroimaging studies in humans could provide insight into how MOR activity correlates with clinical outcomes and subjective effects, helping refine patient selection criteria. Third, there is a need to explore interindividual variability, both genetic and epigenetic, in MOR expression or function, which may influence both the therapeutic response and risk of dependence. Finally, longitudinal studies are required to assess whether repeated ketamine exposure leads to neuroadaptive changes in MOR-related pathways, potentially increasing the vulnerability to misuse over time. Clarifying these aspects will be critical for developing safer ketamine-based therapies and informing regulatory frameworks that minimize risks while preserving clinical benefits.

Monoaminergic system receptors

Although ketamine is believed to primarily target the NMDA receptor, subanesthetic doses also affect monoaminergic neurotransmission in the CNS, including both the serotonergic and dopaminergic systems. Some studies found that ketamine may influence the serotonin transporter and the plasma membrane monoamine transporter by enhancing serotonin signaling via binding to 5-hydroxytryptamine (5HT)_{1B} receptors, contributing to its antidepressant actions.⁷² However, these transporters are not essential for ketamine to exert its effects.⁵⁵

Ketamine has been extensively studied for its potential effects on the dopaminergic system; however, results have been mixed.⁶⁴ Some studies have suggested that ketamine enhances dopaminergic activity by reducing glutamatergic inhibition, leading to increased dopamine release in the nucleus accumbens and elevated firing of ventral tegmental area neurons.^{73,74} This activation may contribute to ketamine's rapid antidepressant effects by restoring the deficits in dopamine-dependent synaptic plasticity.⁷⁵ However, other evidence suggests that ketamine's effects on dopamine are indirect. For instance, PET studies found that esketamine reduced D2/3 receptor binding in the striatum⁷⁶ and, despite increasing dopamine release, esketamine did not significantly affect dopamine transporter binding.⁷⁷

Additionally, ketamine does not directly modulate dopamine efflux or bind to D2 receptors.⁷⁸ Although chronic use may alter D1 receptor availability,⁷⁹ its impact on dopamine synthesis and transporter function is minimal. Notably, ketamine may block high-affinity D2 receptors at anesthetic doses,⁸⁰ but this effect appears to be dose-dependent. Overall, the effects of ketamine on the dopaminergic system are primarily mediated through NMDA receptor antagonism and indirect modulation of neurotransmitter networks, including serotonin.^{81,82} Although ketamine can influence dopamine release, its direct interaction with dopamine receptors or transporters is limited, highlighting the need for further investigation.

Cholinergic receptors

Ketamine directly inhibits cholinergic (both nicotinic and muscarinic) receptors in the prefrontal cortex and acts on cholinergic neurons in the hippocampus and the striatum, which has psychological effects.⁸³ As a result, the anticholinesterase agent physostigmine can counteract ketamine's central anticholinergic effects and reverse its hypnotic actions.⁸⁴

Neural plasticity

Depression has been linked to synaptic deficits and maladaptive plasticity. The importance of these deficits and whether they cause depression versus are a consequence of depression is not clear. Ketamine appears to have neurotrophic effects, resulting in dendritic spine growth in cortical pyramidal neurons.⁸⁵ Preclinical rodent studies found that these changes occur rapidly,⁸⁶ and it has been speculated that neuroplastic changes may be related to ketamine's rapid onset of action. However, the evidence is not clear, and much further work is required.

Ketamine's therapeutic role

In the past 50 years, ketamine has become a vital anesthetic in humans⁸⁷ and, more recently, its range of uses has increased to include managing chronic pain, treating TRD, and reducing

suicidal ideation. The discovery of ketamine's rapid antidepressant effects has led to a substantial increase in research aimed at understanding its therapeutic benefits. Indeed, ketamine has been one of the most impactful substances in advancing psychiatric disorder research and treatment over the past few decades.⁸⁸

Anesth Analg

Ketamine stands out among most other sedatives and anesthetics due to its ability to induce a state of dissociative anesthesia by blocking NMDA receptors at high doses, which is a unique quality not commonly found in these types of drugs.⁸⁹ Unlike most other anesthetics that possess sedative or hypnotic properties and primarily act through GABA receptors, ketamine has a different mechanism of action.⁹⁰

Ketamine's dissociative effects can be characterized by the experience of being conscious while simultaneously detached from sensory perceptions. As the dose increases, the dissociative state intensifies, leading to dream-like states of both open- and closed-eye visuals, as well as significant perturbations in thought and bodily sensation.⁹¹ Ketamine exerts a substantial influence on the intracortical dynamics of the brain, which can be ascribed to its singular effects. This can be explained by distinct alterations in intracortical dynamics that are evident during ketamine administration.⁹² When administered at high doses, ketamine induces a state of deep dissociation that is accompanied by amnesia and a loss of consciousness. This effect occurs because ketamine affects NMDA receptors, which are critical components of excitatory neurotransmission, long-term potentiation, and memory formation.⁹³ Ketamine-induced analgesia and ketamine-induced dissociation are both independently regulated by ketamine and do not exhibit a robust intrinsic connection.⁹⁴

In addition, research has demonstrated that ketamine exhibits distinct patterns of neural activity compared to other anesthetics. The effects of ketamine on the electrophysiological activity of the brain can be quantified using electroencephalography (EEG). In humans, the disappearance of behavioral responsiveness coincides with the emergence of EEG slow-wave activity.⁹⁵ The results of high-density EEG studies conducted on human volunteers demonstrate that power in the theta, gamma, and delta frequency bands increased in both frontal and posterior channel clusters during ketamine anesthesia.⁹⁶ Posterior alpha power was also found to be decreased under both anesthetic and subanesthetic dose conditions.⁹⁶

Due to its non-GABAergic mechanism of action, ketamine is a reliable and effective option for emergency anesthesia in a prehospital setting. Its wide dosing range makes it suitable for various situations, and its sympathomimetic effect helps maintain cardiovascular stability and respiratory function. Ketamine also provides a level of analgesia comparable to that of morphine, making it an excellent choice for pain management in emergency situations.^{5,97} During dissociative anesthesia, fundamental reflexes stay intact, pulmonary compliance increases, and airway resistance and bronchospasm decrease, benefiting patients with airway diseases.⁹⁸ For the induction of anesthesia, racemic ketamine is typically given intravenously at a dose of 1–2 mg/kg (Figure 1), resulting in dissociative anesthesia within a period of 1–2 min. This administration is typically carried out as a bolus.⁵

As noted above, ketamine can be effectively administered through various routes, including intravenous, oral, sublingual, intranasal, intramuscular, intraosseous, rectal, inhaled, and subcutaneous. Intravenous administration is the most effective route in

terms of bioavailability and onset time.^{5,99} Currently, ketamine is employed in emergency departments for anesthesia and procedural sedation in diverse patient populations ranging from minors to adults. In this context, ketamine's extensive dosing range and analgesic properties, in addition to the possibility of administering intramuscular doses, have proven particularly advantageous and enable its administration in field conditions where no anesthesiologist or monitoring equipment is accessible.^{100,101} However, ketamine is not typically used as the primary agent for general anesthesia in hospitals because of its psychotomimetic effects and potential to cause emergence phenomena. Emergence phenomena, which can manifest as profound confusion or hyperexcitation upon emerging from the dissociative state, affect up to 20% of the patients.⁹⁷

Administering 0.5 mg/kg of ketamine upon induction followed by 10 µg/kg/h until wound closure decreased perioperative opioid requirements in opiate-dependent patients with chronic back pain undergoing back surgery.¹⁰² Similarly, perioperative IV ketamine administration likely reduces postoperative pain and analgesic use, with consistent results across surgeries, dosing, and pain levels, with minimal CNS adverse effects.¹⁰³ A systematic review published in 2017 showed that intravenous ketamine administration significantly reduced postoperative hysterectomy pain.¹⁰⁴

Another systematic review showed that perioperative intravenous ketamine administration can reduce postoperative analgesic consumption and pain intensity.¹⁰⁵ The results were consistent for different types of operations and for the timing of ketamine administration, with larger and smaller studies and higher and lower pain intensity. CNS adverse events differed slightly between the ketamine and control groups. Perioperative intravenous ketamine can also reduce postoperative nausea and vomiting to a small but clinically relevant extent.¹⁰⁶ Ketamine has also been shown to effectively reduce opioid requirements and postoperative nausea and vomiting in patients undergoing bariatric surgery, particularly in those with high pain levels or opioid-related vulnerabilities.¹⁰⁷ It may also attenuate postoperative hyperalgesia, although further research is necessary to confirm this finding.^{104,108}

Pediatric use

Administering a 0.5 mg/kg dose of ketamine as an adjunct to local anesthetics for caudal block is both safe and effective in managing postoperative pain in children.¹⁰⁹ Furthermore, a meta-analysis found that pediatric patients receiving caudal ketamine experienced reduced postoperative pain and a lower need for non-opioid analgesics.¹¹⁰ Additionally, a comprehensive systematic review of randomized controlled trials that incorporated ketamine into pediatric caudal anesthesia found that it extended the duration of pain relief while causing minimal side effects, in contrast to the use of local anesthetic alone.¹¹¹

In pediatric cleft palate surgery, the use of bupivacaine or ketamine at the surgical site can provide effective pain relief with minimal side effects. While both options are beneficial, ketamine appeared to outperform bupivacaine in reducing the need for additional analgesics, promoting better sleep and allowing for earlier feeding.¹¹² Furthermore, a study found that administering ketamine, either subcutaneously or intravenously, at the end of tonsillectomy surgery safely helped manage post-operative pain without significantly increasing the risk of complications.¹¹³ In the context of children with burns, the application of oral midazolam and ketamine offered superior analgesic effects than midazolam, acetaminophen, or codeine for painful procedures.¹¹⁴ A recent

investigation that explored the use of adjunctive ketamine and morphine to alleviate postoperative pain and reduce opioid usage in adolescent patients undergoing spinal surgery found decreases in morphine consumption, pain scores, and nausea, suggesting that ketamine had a positive impact on postoperative outcomes.¹¹⁵

Clinical implications of ketamine anesthesia requiring further study

Although the use of ketamine has shown promising results in many studies, it is important to note that not all trials have reported positive outcomes. For instance, one study found that the administration of low-dose ketamine (10 mg i.v.) combined with spinal bupivacaine, fentanyl, morphine, and i.v. ketorolac after cesarean section provided no additional postoperative analgesic benefit.¹¹⁶ Another study found that adding 0.25–1 mg/kg ketamine to anesthesia induction for cesarean section did not improve postoperative analgesia.¹¹⁷ Similarly, a combination of ketamine (5 mg/kg/min) and remifentanyl for cholecystectomy did not improve postoperative pain severity, time to first analgesic supplementation, or total morphine requirement within 24 h.¹¹⁸ In addition, adding ketamine (5 µg/kg/min) did not prevent or reduce remifentanyl-induced postoperative hyperalgesia.¹¹⁹ Also, while propofol–ketamine versus propofol–alfentanil for dilatation and curettage showed comparable results, the ketamine group required more time before orientation returned.¹²⁰ A different study found that propofol/alfentanil and propofol/ketamine combinations provided adequate levels of hypnosis and pain relief during upper gastrointestinal endoscopy in severely obese individuals, but the propofol/ketamine mixture led to significantly higher consumption of propofol.¹²¹

The findings indicate that ketamine's efficacy in improving *Anesth Analg* may be limited, necessitating additional research to determine its appropriate use. Given the considerable clinical variability, it is too early to recommend a standardized ketamine protocol. Further investigation is needed to address questions about optimal dosing, treatment duration, and patient-centered outcomes, including long-term effects. These areas require further exploration in future research to fully comprehend the role and effectiveness of ketamine in anesthesia and acute pain management.¹⁰⁵

Chronic pain management

Chronic pain is typically caused by central sensitization or neuropathic processes that lead to hyperalgesia or allodynia.^{122,123} Ketamine's effects on NMDA receptors are crucial for its effectiveness in the management of chronic pain.¹²⁴ Ketamine has been used as a therapeutic option for managing persistent pain disorders, particularly those with a neuropathic nature and pain arising from cancer.^{125,126} However, the results of ketamine research on chronic pain are promising but inconsistent, requiring additional rigorous studies to determine optimal use and long-term consequences. Although ketamine causes few deleterious effects, the interdependence between dose, efficacy, and safety profile warrants precise delineation.¹²⁷

Low-dose ketamine effectively relieves neuropathic pain by inhibiting NMDA receptors; modulating serotonin, dopamine, and norepinephrine reuptake; and enhancing descending inhibition and central anti-inflammatory effects.¹²⁸ One study found that postoperative ketamine at 0.2 mg/kg/h combined with opioids significantly reduced the average pain scores in surgical patients

on chronic opioids. However, it did not affect the lowest or highest reported pain levels or postoperative opioid consumption, indicating a limited overall pain management benefit.¹²⁹ In contrast, a study of opioid-tolerant patients undergoing spinal fusion surgery who received low-dose ketamine infusion for the first 24 h found that these patients required fewer opioids than those who did not receive the infusion. However, this effect was not observed in opioid-naïve patients.¹³⁰ A meta-analysis on the efficacy and safety of perioperative ketamine for the prevention of chronic postsurgical pain showed low-certainty evidence, suggesting that perioperative ketamine does not affect chronic postsurgical pain in adults. Similarly, compared to placebo, ketamine may reduce the occurrence of chronic postsurgical neuropathic pain after three months¹³¹; however, optimal dosing, treatment duration, and impact on patient-related outcomes remained unclear, highlighting the need for additional research.

Subanesthetic ketamine infusions offer a promising treatment option for chronic pain of both neuropathic and nociceptive origin that is refractory to conventional treatments. Studies have demonstrated that these infusions can modestly improve pain outcomes while also presenting common yet mild side effects that can be effectively managed through pharmacological interventions.¹³² A recent systematic review and meta-analysis conducted to assess the effectiveness and safety of ketamine as a treatment for cancer pain in adult patients found that it holds promise for reducing the severity of cancer pain, decreasing opioid use, and possibly ameliorating depressive symptoms.¹³³ Nevertheless, additional robust clinical trials with larger sample sizes are necessary to verify these findings and to establish the optimal dosage and administration route for ketamine in cancer pain management. Ketamine has also shown promise as a potential treatment for various persistent pain disorders, including neuropathic pain, fibromyalgia, CRPS, phantom limb pain, cancer pain, and post-thoracotomy pain syndrome. Studies have revealed its efficacy in reducing pain symptoms, enhancing patient satisfaction, and improving overall quality of life in these conditions.¹³⁴

Psychiatric use

As a rapid-acting antidepressant, ketamine represents a paradigm shift in neuropsychiatric care, providing swift relief from depressive symptoms within hours. Robust clinical evidence supports the efficacy of subanesthetic doses of ketamine and its enantiomer, esketamine ((S)-ketamine). The (S)- and (R)-enantiomers of ketamine exhibit distinct pharmacological properties that contribute to their therapeutic potential in a broad range of neuropsychiatric disorders, including various forms of depression, anxiety, substance use, and eating disorders. Additionally, ketamine has demonstrated rapid efficacy in alleviating core symptoms of depression, such as anxiety, anhedonia, and suicidal ideation.³⁵ Ketamine's ability to effectively reduce the symptoms of major depressive disorder and bipolar disorder has been extensively reviewed.^{135–137} And, indeed, a recent study involving 403 patients with nonpsychotic TRD, randomized across five clinical sites, with 200 patients assigned to the ketamine group and 203 to the ECT group, found that ketamine was noninferior to ECT, the current gold standard for TRD without psychosis.¹³⁸

Treatment-resistant depression

As previously mentioned, ketamine differs from traditional antidepressants in that it targets NMDA receptors in the glutamatergic

system, enhances synaptic plasticity, and rapidly alleviates depression through unique neurochemical mechanisms.^{139–141} Although both ketamine and esketamine hold promise for TRD, their adverse effects, patient selection, and monitoring must be carefully considered. For esketamine, the most common route of administration is intranasal, typically in combination with a newly initiated antidepressant; for ketamine, intravenous administration of racemic ketamine as monotherapy or adjunctively with preexisting psychotropic treatments is the most common way of delivering ketamine, and the most frequently explored. Numerous short-term randomized controlled trials have consistently demonstrated the rapid and significant effectiveness of both formulations and modes of administration in adults with TRD. The efficacy of a single dose of ketamine lasts 3–7 days, while repeated intravenous racemic ketamine is effective for up to 2–3 weeks; most patients relapse within 1 month (median, 18 days), necessitating repeated administration.¹⁴²

Esketamine's recommended dose for intranasal use is 56 mg on the first day, with the possibility of increasing to 56–84 mg twice weekly for the initial 4 weeks. For the subsequent 4 weeks, the dosage is adjusted to 56–84 mg once weekly, followed by every 1–2 weeks thereafter. For treating depressive symptoms in adults with major depressive disorder and acute suicidal ideation or behavior in the US, the recommended dose is 84 mg twice per week for 4 weeks. After week 4, it is important to evaluate the treatment's therapeutic benefits, and if minimal response is observed, discontinuation may be recommended.¹⁴³ Despite a systematic review and meta-analysis revealing that intravenous ketamine was more effective than intranasal esketamine in treating depression, it is important to note that these findings should not be interpreted as definitive or prescriptive.¹⁴⁴ The adverse effects most often experienced during esketamine treatment included nausea, dissociation, dizziness, vertigo, numbness, sedation, and a tingling sensation.¹⁴⁵ Safety concerns include risks such as bladder damage and, in rare cases, suicidal behavior.¹⁴⁶ A recent pharmacovigilance analysis by Jiang *et al.* (2023), based on the FDA Adverse Event Reporting System (FAERS), highlighted several potential concerns associated with intranasal esketamine, including reports of dissociation, sedation, suicidal ideation, and suspected dependence. The study emphasizes the importance of ongoing surveillance regarding esketamine's long-term safety, particularly with respect to addiction potential and sustained antidepressant efficacy.¹⁴⁷ However, long-term data extending up to 7 years indicate low rates of suicidal behavior, providing important insight into esketamine's long-term safety profile.¹⁴⁸

Nevertheless, further research is needed to fully understand the long-term consequences, comparative effectiveness, and strategies to maximize the effectiveness of both ketamine and esketamine. Additional studies are needed to explore the possible benefits of these drugs in other depressive disorders and investigate their combination with psychosocial treatments and other rapid-acting antidepressant medications.¹⁴²

Impact of ketamine on suicide

Both ketamine and esketamine have been shown to rapidly reduce suicidal ideation,^{149,150} with benefits observed after both single and repeated doses.¹⁵¹ Notably, ketamine's antisuicidal effects were found to occur within 2 h,¹⁵² endure for up to 72 h and last 7 days or more^{153,154}; these effects were sustained through maintenance doses, indicating the potential for short-term management of suicidal thoughts, with further research needed for long-term

benefits.¹⁵² Furthermore, these effects appeared to occur independently of its antidepressant effects.^{155,156} Another randomized, double-blind clinical trial that looked at both ketamine and esketamine found that both drugs were effective in rapidly reducing suicidal ideation in individuals with TRD at 24 h and up to 7 days post-infusion; no significant differences in efficacy were observed between ketamine and esketamine.¹⁵⁷

Overall, compelling evidence supports a favorable short-term risk–benefit profile for intravenous racemic ketamine, while the risk–benefit balance of intranasal esketamine remains under evaluation for safety and long-term efficacy, despite its proven effectiveness in reducing suicidal thoughts. However, esketamine offers a potentially more convenient intranasal option, and the growing body of research supporting its efficacy and safety profile led to FDA approval for the treatment of major depressive disorder with suicidal ideation or behavior.^{158–160} The available data does not provide information on the impact of maintenance of esketamine or ketamine treatments with suicidality as the primary measure.¹⁴² In this context, the integration of ketamine into a comprehensive multimodal treatment strategy for patients with suicidal tendencies requires careful clinical application and continuous pharmacovigilance.¹⁶¹

In addition to its therapeutic effects, ketamine has shown promise as a prophylactic agent in preclinical and early clinical studies. Research indicates that a single administration of ketamine prior to a stressful event may reduce the subsequent development of depression-like or PTSD-related behaviors, possibly by enhancing stress resilience mechanisms.^{162–164} These findings open new avenues for preventive mental health strategies, particularly in high-risk populations.

Tolerability and safety

The adverse events that may occur during treatment with ketamine for anesthetic/analgesic and psychiatric uses can be classified into several categories, including psychiatric, neurologic/cognitive, hemodynamic, genitourinary, and abuse liabilities.^{165,166} With regard to ketamine versus esketamine for the treatment of depression, side effects are typically identical in terms of both the percentage and severity of events.¹ Side effects include headaches, dizziness, dissociation, elevated blood pressure, blurred vision, and anxiety; these effects usually occur immediately after treatment and resolve quickly.¹⁶⁷ The variation in the occurrence and intensity of adverse events is influenced by factors such as differences in ketamine formulation, administration route, patient demographics, coadministered medications, and study design features. However, intravenous ketamine-related adverse events have not always been consistently documented, and the available data may be biased due to limited information on long-term exposure to ketamine. In contrast, safety and tolerability information for esketamine in TRD is comprehensive, covering both short- and long-term exposures.¹³⁷

Adverse psychiatric effects

Dissociation: The psychotomimetic effects of ketamine during anesthetic use, including auditory hallucinations, paranoid ideas, anxiety, inability to control thoughts, derealization, visual hallucinations, and heightened sensitivity to sound and color, are dose-dependent and may vary according to the administered dose.⁷⁰ With subanesthetic ketamine infusions, the risk of

psychotomimetic effects occurs in approximately 1 out of every 21 patients. The incidence rises with faster infusion rates but declines rapidly once the infusion is stopped.¹⁶⁸ Another study found that patients receiving ketamine for pain who had a history of depression had a lower incidence of ketamine-related adverse effects than those with no history of depression (10.3% versus 37.3%).¹⁶⁹

With regard to ketamine use in TRD populations, psychotomimetic effects, which are also dose-dependent, include dissociation, perceptual disturbances, odd sensations, derealization, hallucinations, feelings of strangeness, and depersonalization.¹⁶⁶ Typically, dissociation peaks within 40 min of administration and tends to subside within the time frame of 1 to 2 h. Approximately 72% of studies using intravenous racemic ketamine for TRD reported dissociation, which is significantly higher than the 36% reported in studies using non-intravenous racemic ketamine.¹⁶⁶ This difference is likely due to differences in plasma levels rather than the route of administration.¹⁶⁶ However, the proportion of individuals with TRD who reported dissociation diminished with each subsequent administration.¹⁶⁶ Interestingly, dissociation is neither necessary nor sufficient to elicit an antidepressant response.^{170,171}

It should be noted that the Clinician-Administered Dissociative States Scale (CADSS) is the most widely used tool for gauging the intensity of dissociation in TRD cases.^{142,172} There is agreement that the CADSS, which has been adapted for use as a safety measure for ketamine, does not adequately assess the full range of psychotomimetic experiences associated with ketamine and likely underestimates the occurrence of dissociation.¹⁷³ Despite its limitations, as it lacks validation against other safety measures, the KSET demonstrates face and content validity, and is recommended for monitoring acute and long-term ketamine side effects.¹⁷²

Induction of psychosis: Ketamine can produce symptoms similar to psychosis, including hallucinations, delusions, and cognitive impairments, resembling those observed in schizophrenia when used in healthy volunteers.^{174,175} This may hold particular significance, especially for those who have preexisting vulnerabilities. According to previous reports, individuals with a history of psychosis are more likely to experience dissociation when administered ketamine.¹⁷⁶ However, these individuals are not prone to developing psychosis because of ketamine use. Despite their increased likelihood of dissociation, the duration of this experience did not extend beyond 40 min.¹⁷⁶ However, ketamine can cause psychotic symptoms in individuals with schizophrenia and depressive disorders.^{177,178} Nevertheless, esketamine showed robust antisuicidal and antidepressant effects in a schizophrenic patient with severe depression, without causing psychotic symptoms, suggesting its broader therapeutic potential.¹⁷⁹

Neurologic/cognitive: Ketamine's neurological and cognitive effects range from psychedelic experiences, such as auditory hallucinations, to disorientation in time and space, along with physical symptoms such as dizziness and nausea. Although memory loss in new users typically resolves on its own, prolonged, and excessive ketamine use for ≥ 12 months is known to have a detrimental impact on cognitive abilities and exacerbate psychological issues, highlighting the importance of user education and healthcare interventions,¹⁸⁰ particularly in the context of low-dose ketamine use on memory in chronic pain management.⁷⁰ Nevertheless, in adults with TRD, there have been no consistent or repeated reports of impaired cognitive functioning in those treated with racemic ketamine or intranasal esketamine.^{181,182} Long-term data on esketamine indicate that cognitive performance generally remains

stable or improves postbaseline, with a low incidence of significant cognitive impairment in patients with TRD.¹⁴⁸

Hemodynamic: Ketamine and esketamine have dual actions on the cardiovascular system, directly causing a negative inotropic effect while also indirectly stimulating it.^{183,184} In anesthetic and pain management, activation of the sympathetic system leads to the release of catecholamines, inhibition of the vagus nerve, and release of norepinephrine from the sympathetic ganglia. This results in myocardial depression within minutes to hours of high-dose ketamine infusion or repeated ketamine doses. Cardiovascular stimulation, characterized by tachycardia, systemic and pulmonary hypertension, and increased cardiac output and myocardial oxygen consumption, occurs after low-dose ketamine infusion.^{183,185} According to the data provided, it is necessary to closely monitor patients who are being treated with low-dose ketamine. However, whether clonidine or beta-adrenoceptor blockade can improve hemodynamics following ketamine treatment has not been investigated yet, despite it being plausible.⁷⁰

The adverse hemodynamic event most frequently observed with ketamine use in depression is an elevation in heart rate and blood pressure, which may be accompanied by palpitations, arrhythmias, chest pain, and hypotension.¹⁸⁶ Roughly 10–50% of patients experience increased systolic and diastolic blood pressure after treatment, which typically occurs within 20–50 min and resolves within 2–4 h. Notably, one study found that administering ketamine for the treatment of depression over a period of 40 min at a dose of 0.5 mg/kg resulted in only small, well-tolerated, and clinically insignificant changes in blood pressure.¹⁸⁷ Nevertheless, 20–30% of individuals receiving ketamine (usually intravenous for TRD) may have blood pressures above 180/100 mmHg and/or heart rates of ≥ 110 beats per minute.^{166,186} One study found that approximately 20% of individuals receiving ketamine for TRD in a community-based clinic may need pharmacological treatment for intravenous ketamine-induced hypertension, depending on the clinic-level protocols in place.¹⁸⁸ In contrast, the rate of hypertension in the esketamine development program for TRD was relatively low, with only 2.1% of patients requiring antihypertensive treatment, compared to 1.2% in the placebo group.¹⁸⁹ However, it is important to note that these participants were enrolled in clinical research settings, where the inclusion criteria likely excluded individuals with poorly controlled blood pressure, which may have influenced the observed rates.¹⁸⁹ Although hemodynamic changes are generally asymptomatic, they may not subside with subsequent ketamine administration.

Genitourinary: Ketamine use, especially prolonged or heavy use, may result in severe genitourinary effects, including symptoms of ketamine-induced ulcerative cystitis. These symptoms include increased urgency and frequency of urination, dysuria, urge incontinence, and hematuria.⁷⁰ Chronic ketamine abuse can alter bladder function, leading to severe urological issues in users who abuse the drug at least three times a week for 2 years or more.¹⁹⁰ Disruption of the urine-bladder epithelial interface, bladder neuromuscular junction destruction, nitric oxide synthase-mediated inflammation, and immunoglobulin E-mediated inflammation characterize the pathology underlying lower urinary tract symptoms.¹⁹¹ Bladder cystoscopy revealed signs of inflammation of the bladder wall, whereas further tests revealed instances of thickened ureters, stenosis, vesicoureteral reflux, and hydronephrosis.^{192,193} Approximately 20% to 40% of individuals who use ketamine recreationally experience lower urinary tract symptoms.^{194,195} Long-term ketamine use may result in persistent symptoms in approximately 5% of individuals, even after drug cessation.^{192,196}

In this context, it should be noted that prolonged ketamine exposure, often necessary for individuals with depression, may result in adverse effects, as demonstrated by the dose–response relationship between ketamine exposure and the likelihood of experiencing lower urinary tract symptoms. The fact that some studies involving intranasal esketamine have not reported a significant number of individuals experiencing genitourinary issues is a positive development.^{148,191} Currently, there is no universally accepted treatment method for ketamine-related kidney, ureter, bladder, and related pathologies other than the temporary cessation of ketamine administration.¹⁹⁷

Abuse liability: Ketamine's popularity as a recreational drug is largely attributed to its psychedelic side effects—the same limitations that restrict its clinical use. However, unlike other drugs that result in physical dependence and subsequent withdrawal symptoms, ketamine does not produce any observable physical withdrawal state upon discontinuation of long-term abuse.¹⁸⁵ Ketamine is often used by individuals who ingest, snort, or inject it at relatively high doses, which can result in an experience that typically lasts no more than 2 h. When the dissociative effects of ketamine are severe, the individual may experience a phenomenon known as the K-hole, which is characterized by symptoms that resemble schizophrenia, such as perceived perceptions that are completely separate from reality (e.g., near-death experiences). At lower doses, the drug can induce a state of mild dissociation, accompanied by vivid hallucinations and distortion of time and space, such as the sensation of melting into one's surroundings or experiencing an out-of-body sensation.^{185,198}

Ketamine is categorized as a Schedule III substance in the United States because of its potential misuse and, in the UK, ketamine is a Class C drug. Racemic ketamine, administered intravenously for TRD at doses of 0.4–0.8 mg/kg, has been found to increase preference for the drug, leading to concerns about drug misuse and sensitivity to other misuse drugs in healthy individuals.^{6,180,199,200} Both intravenous racemic ketamine and esketamine can lead to an increase in drug preference among recreational polydrug users.²⁰¹ However, the likelihood of recreational ketamine abuse has not been shown to increase with the use of esketamine.¹⁴⁸

A previous study indicated that chronic ketamine users receiving lamotrigine, a glutamate release inhibitor, experienced a significant reduction in the frequency and daily dose of ketamine.²⁰² Although ketamine is a medicinal substance with a generally safe pharmacological profile, its abuse has severe consequences for both individuals and society.²⁰³

Conclusions: Ketamine has undergone a remarkable transformation from its initial use as an anesthetic to its current role as a novel therapeutic agent in psychiatry and pain management. Its rapid and robust antidepressant effects, particularly in TRD, have revolutionized the field of mental health, offering hope to patients who do not respond to conventional treatments. Additionally, its analgesic, anti-inflammatory, and neuroprotective properties highlight its broader clinical utility beyond anesthesia. Despite its significant therapeutic potential, ketamine presents challenges, including its dissociative and hallucinogenic effects, which contribute to its misuse and regulatory restrictions. Prolonged recreational use has been associated with serious health complications, necessitating careful monitoring and risk mitigation strategies. The balance between medical benefits and the potential for abuse remains a critical concern for healthcare providers and policy-makers.

Ongoing research continues to deepen our understanding of ketamine's mechanisms of action, long-term safety profile, and emerging therapeutic applications, including its use in bipolar depression, post-traumatic stress disorder, and substance use disorders. Future studies should aim to optimize dosing strategies, develop alternative delivery methods, and identify predictive biomarkers of treatment responses. As scientific knowledge advances, the clinical integration of ketamine must be guided by rigorous evidence with the goal of maximizing therapeutic benefits while minimizing associated risks.

The evolving understanding of the mechanisms, therapeutic potential, and risk profile of ketamine highlights the critical importance of sustained investigation. Further research into its antidepressant effects, prophylactic potential, abuse liability, and long-term safety is essential not only for advancing scientific knowledge but also for improving clinical care. Continued generation of robust evidence will be the key to informing best practices, shaping regulatory decisions, and ensuring safe and effective use across diverse patient populations.

Acknowledgements. Dr. Bustos and Dr. Quintero would like to acknowledge the enormous support of the Universidad de La Sabana and Deakin University. Ioline Henter (NIMH) provided invaluable editorial assistance.

Author contributions. Conceptualization: R.-H.B. Supervision: R.-H.B.; Writing—original draft: R.-H.B., J.-M.Q., S.L., S.B., C.A.Z.; Writing—review and editing: R.-H.B., J.-M.Q., S.L., S.B., C.A.Z. All authors agreed to the publication of the manuscript in its final version.

Financial support. This manuscript was funded by grants from the Universidad de La Sabana MED-296-2020.

Competing interest. Dr. Zarate is listed as a coinventor on a patent for the use of ketamine in major depression and suicidal ideation; as a coinventor on a patent for the use of (2R,6R)-hydroxynorketamine, (S)-dehydronorketamine, and other stereoisomeric dehydroxylated and hydroxylated metabolites of (R,S)-ketamine in the treatment of depression and neuropathic pain; and as a coinventor on a patent application for the use of (2R,6R)-hydroxynorketamine and (2S,6S)-hydroxynorketamine in the treatment of depression, anxiety, anhedonia, suicidal ideation, and post-traumatic stress disorder. He has assigned his patent rights to the U.S. government but will share a percentage of any royalties that may be received by the government. The remaining authors have no relevant affiliations or financial involvement with any organization or entity with a financial interest in or financial conflict with the subject matter or materials discussed in the manuscript. This includes employment, consultancies, honoraria, stock ownership or options, expert testimony, grants, or patents received or pending, or royalties.

References

1. Bahji A, Zarate CA, Vazquez GH. Efficacy and safety of racemic ketamine and esketamine for depression: a systematic review and meta-analysis. *Expert Opin Drug Saf.* 2022;**21**(6):853–866. doi:10.1080/14740338.2022.2047928
2. Nikolin S, Rodgers A, Schwaab A, et al. Ketamine for the treatment of major depression: a systematic review and meta-analysis. *EClinicalMedicine.* 2023;**62**:102127 doi:10.1016/j.eclinm.2023.102127
3. Medeiros GC, Demo I, Goes FS, Zarate CA, Gould TD. Personalized use of ketamine and esketamine for treatment-resistant depression. *Transl Psychiatry.* 2024;**14**(1):481 doi:10.1038/s41398-024-03180-8
4. Krystal JH, Kaye AP, Jefferson S, et al. Ketamine and the neurobiology of depression: toward next-generation rapid-acting antidepressant treatments. *Proc Natl Acad Sci USA.* 2023;**120**(49):e2305772120 doi:10.1073/pnas.2305772120

5. Barrett W, Buxhoeveden M, Dhillon S. Ketamine: a versatile tool for anesthesia and analgesia. *Curr Opin Anaesthesiol.* 2020;**33**(5):633–638. doi:10.1097/aco.0000000000000916
6. Van Amsterdam J, Van Den Brink W. Harm related to recreational ketamine use and its relevance for the clinical use of ketamine. A systematic review and comparison study. *Exp Opin Drug Saf.* 2022;**21**(1):83–94. doi:10.1080/14740338.2021.1949454
7. Vu DM, Freyre K, Opsha O, Opsha Y. Recreational ketamine-induced cholangiopathy and ulcerative cystitis. *Am J Emerg Med.* 2021;**45**(682):e7, e9–e682. doi:10.1016/j.ajem.2020.12.025
8. Corazza O, Assi S, Schifano F. From “Special K” to “Special M”: the evolution of the recreational use of ketamine and methoxetamine. *CNS Neurosci Therap.* 2013;**19**(6):454–460. doi:10.1111/cns.12063
9. Rueda Carrillo L, Garcia KA, Yalcin N, Shah M. Ketamine and its emergence in the field of neurology. *Cureus.* 2022;**14**(7):e27389 doi:10.7759/cureus.27389
10. Le Daré B, Pelletier R, Morel I, Gicquel T. Histoire de la kétamine: une molécule ancienne qui a toujours la cote. *Ann Pharm Fr.* 2022;**80**(1):1–8. doi:https://doi.org/10.1016/j.pharma.2021.04.005
11. Zanos P, Gould TD. Mechanisms of ketamine action as an antidepressant. *Mol Psychiatry.* 2018;**23**(4):801–811. doi:10.1038/mp.2017.255
12. Kumar A, Kohli A. Comeback of ketamine: resurfacing facts and dispelling myths. *Korean J Anesthesiol.* 2021;**74**(2):103–114. doi:10.4097/kja.20663
13. Mion G. History of anaesthesia: the ketamine story – past, present and future. *Eur J Anaesthesiol.* 2017;**34**(9):571–575. doi:10.1097/EJA.0000000000000638
14. Powers AR, 3rd, Gancsos MG, Finn ES, Morgan PT, Corlett PR. Ketamine-induced hallucinations. *Psychopathology.* 2015;**48**(6):376–385. doi:10.1159/000438675
15. Félix L, Antunes L, Campos S, Venâncio C, Coimbra AM. Chapter 62 – Recreational use of ketamine and its interaction with NMDA receptors. In: Preedy VR, ed. *Neuropathology of Drug Addictions and Substance Misuse.* Academic Press; 2016:672–680.
16. Zarate , Jr. CA, Singh JB, Carlson PJ, et al. A randomized trial of an N-methyl-D-aspartate antagonist in treatment-resistant major depression. *Arch Gen Psychiatry.* 2006;**63**(8):856–864. doi:10.1001/archpsyc.63.8.856
17. Kishimoto N, Kato J, Suzuki T, Arakawa H, Ogawa S, Suzuki H. A case of RSD with complete disappearance of symptoms following intravenous ketamine infusion combined with stellate ganglion block and continuous epidural block. *Masui Jpn J Anesthesiol.* 1995;**44**(12):1680–1684.
18. Kingery WS. A critical review of controlled clinical trials for peripheral neuropathic pain and complex regional pain syndromes. *Pain.* 1997;**73**(2):123–139. doi:10.1016/s0304-3959(97)00049-3
19. Sameer M, DJIJoCI AA, Science I. Clinical outcomes of ketamine in patients with traumatic brain injury: a systematic review. *Int J Crit Illn Inj Sci.* 2024;**14**(3):160–175.
20. Wang X, Lin C, Lan L, JJJoca L. Perioperative intravenous S-ketamine for acute postoperative pain in adults: a systematic review and meta-analysis. *J Clin Anesth.* 2021;**68**:110071
21. Orhurhu V, Orhurhu MS, Bhatia A, Cohen SP. Ketamine infusions for chronic pain: a systematic review and meta-analysis of randomized controlled trials. *Anesth Analg.* 2019;**129**(1):241–254.
22. Church J, Zeman S, Lodge D. The neuroprotective action of ketamine and MK-801 after transient cerebral ischemia in rats. *Anesthesiology.* 1988;**69**(5):702–709. doi:10.1097/00000542-198811000-00011
23. Ornowska M, Wormsbecker A, Andolfatto G, Leung TS, Khan I, Medvedev G. The use of ketamine as a neuroprotective agent following cardiac arrest: a scoping review of current literature. *CNS Neurosci Therap.* 2023;**29**(1):104–110. doi:10.1111/cns.13983
24. Zanos P, Moaddel R, Morris PJ, et al. Ketamine and ketamine metabolite pharmacology: insights into therapeutic mechanisms. *Pharmacol Rev.* 2018;**70**(3):621–660. doi:10.1124/pr.117.015198
25. Cho JE, Shim JK, Choi YS, Kim DH, Hong SW, Kwak YL. Effect of low-dose ketamine on inflammatory response in off-pump coronary artery bypass graft surgery. *Br J Anaesth.* 2009;**102**(1):23–28. doi:10.1093/bja/aen325
26. Malsy M, Gebhardt K, Gruber M, Wiese C, Graf B, Bundscherer A. Effects of ketamine, s-ketamine, and MK 801 on proliferation, apoptosis, and necrosis in pancreatic cancer cells. *BMC Anesthesiol.* 2015;**15**:111 doi:10.1186/s12871-015-0076-y
27. Zhang X, Zhang Y, Du W. Alleviating role of ketamine in breast cancer cell-induced osteoclastogenesis and tumor bone metastasis-induced bone cancer pain through an SRC/EGFR1/CST6 axis. *BMC Cancer.* 2024;**24**(1):1535 doi:10.1186/s12885-024-13290-7
28. Chaves TV, Wilffert B, ZMJTAJoD S, Abuse A. Overdoses and deaths related to the use of ketamine and its analogues: a systematic review. *Am J Drug Alcohol Abuse.* 2023;**49**(2):141–150.
29. Trullas R, Skolnick P. Functional antagonists at the NMDA receptor complex exhibit antidepressant actions. *Eur J Pharmacol.* 1990;**185**(1):1–10. doi:10.1016/0014-2999(90)90204-j
30. Shpilenia LS. [Experience with the use of ketamine in psychiatric practice]. *Zh Nevropatol Psikhiatr Im SS Korsakova.* 1984;**84**(3):418–422. Opyt primeneniia ketamina v psikiatricheskoj praktike.
31. Lv Q, Yang L, Li G, et al. Large-scale persistent network reconfiguration induced by ketamine in anesthetized monkeys: relevance to mood disorders. *Biol Psychiatry.* 2016;**79**(9):765–775. doi:10.1016/j.biopsych.2015.02.028
32. Diazgranados N, Ibrahim L, Brutsche NE, et al. A randomized add-on trial of an N-methyl-D-aspartate antagonist in treatment-resistant bipolar depression. *Arch Gen Psychiatry.* 2010;**67**(8):793–802. doi:10.1001/archgenpsychiatry.2010.90
33. Zarate CA, Brutsche NE, Ibrahim L, et al. Replication of ketamine’s antidepressant efficacy in bipolar depression: a randomized controlled add-on trial. *Biol Psychiatry.* 2012;**71**(11):939–946. doi:10.1016/j.biopsych.2011.12.010
34. Lally N, Nugent AC, Luckenbaugh DA, Ameli R, Roiser JP, Zarate CA. Anti-anhedonic effect of ketamine and its neural correlates in treatment-resistant bipolar depression. *Transl Psychiatry.* 2014;**4**(10):e469 doi:10.1038/tp.2014.105
35. Johnston JN, Kadriu B, Kraus C, Henter ID, Zarate CA. Ketamine in neuropsychiatric disorders: an update. *Neuropsychopharmacology.* 2024;**49**(1):23–40. doi:10.1038/s41386-023-01632-1
36. Price RB, Nock MK, Charney DS, Mathew SJ. Effects of intravenous ketamine on explicit and implicit measures of suicidality in treatment-resistant depression. *Biol Psychiatry.* 2009;**66**(5):522–6. doi:10.1016/j.biopsych.2009.04.029
37. Sepulveda Ramos C, Thornburg M, Long K, et al. The therapeutic effects of ketamine in mental health disorders: a narrative review. *Cureus.* 2022;**14**(3):e23647 doi:10.7759/cureus.23647
38. Rodriguez CI, Kegeles LS, Levinson A, et al. Randomized controlled crossover trial of ketamine in obsessive-compulsive disorder: proof-of-concept. *Neuropsychopharmacology.* 2013;**38**(12):2475–2483. doi:10.1038/npp.2013.150
39. Jones JL, Mateus CF, Malcolm RJ, Brady KT, Back SE. Efficacy of ketamine in the treatment of substance use disorders: a systematic review. *Front Psychiatry.* 2018;**9**:277 doi:10.3389/fpsy.2018.00277
40. Taylor JH, Landeros-Weisenberger A, Coughlin C, et al. Ketamine for social anxiety disorder: a randomized, placebo-controlled crossover trial. *Neuropsychopharmacology.* 2018;**43**(2):325–333. doi:10.1038/npp.2017.194
41. Widnyana MG, Senapathi TGA, Aryani LNA, Ryalino C. The role of ketamine as an antidepressant agent. *Bali J Anesthesiol.* 2023;**7**(2):
42. Yavi M, Lee H, Henter ID, Park LT, Zarate , Jr CA. Ketamine treatment for depression: a review. *Discov Ment Health.* 2022;**2**(1):9
43. Newport DJ, Carpenter LL, McDonald WM, Potash JB, Tohen M, Nemeroff CB. Ketamine and other NMDA antagonists: early clinical trials and possible mechanisms in depression. *Am J Psychiatry.* 2015;**172**(10):950–966. doi:10.1176/appi.ajp.2015.15040465
44. Aleksandrova LR, Phillips AG, Wang YT. Antidepressant effects of ketamine and the roles of AMPA glutamate receptors and other mechanisms beyond NMDA receptor antagonism. *J Psychiatry Neurosci: JPN.* 2017;**42**(4):222–229. doi:10.1503/jpn.160175
45. Rossi GN, Hallak JEC, Baker G, Dursun SM, Dos Santos RG. The effects of ketamine and classic hallucinogens on neurotrophic and inflammatory

- markers in unipolar treatment-resistant depression: a systematic review of clinical trials. *Eur Arch Psychiatry Clin Neurosci*. 2023;**273**(1):129–155. doi:10.1007/s00406-022-01460-2
46. De Jager JE, Boesjes R, Roelandt GHJ, et al. Shared effects of electroconvulsive shocks and ketamine on neuroplasticity: a systematic review of animal models of depression. *Neurosci Biobehav Rev*. 2024;**164**:105796 doi:10.1016/j.neubiorev.2024.105796
 47. Mion G, Villeveille T. Ketamine pharmacology: an update (pharmacodynamics and molecular aspects, recent findings). *CNS Neurosci Therap*. 2013;**19**(6):370–380. doi:10.1111/cns.12099
 48. Drugbank. Ketamine. 2024. <https://go.drugbank.com/drugs/DB01221>. Accessed November 10, 2024
 49. First Hope. Ketamine hydrochloride: chemical structure, mechanism of action, structural activity relationship, synthesis, uses & side effects. 2024. <https://www.firsthope.co.in/ketamine-hydrochloride-chemical-structure-mechanism-of-action-structural-activity-relationship-s>. Accessed November 11, 2024
 50. Pai A, Heining M. Ketamine. *Continuing education in anaesthesia critical care & pain*. 2007;**7**(2):59–63. doi:10.1093/bjaceaccp/mkm008
 51. Dinis-Oliveira RJ. Metabolism and metabolomics of ketamine: a toxicological approach. *Forensic Sci Res*. 2017;**2**(1):2–10. doi:10.1080/20961790.2017.1285219
 52. Peltoniemi MA, Hagelberg NM, Olkkola KT, Saari TI. Ketamine: a review of clinical pharmacokinetics and pharmacodynamics in anesthesia and pain therapy. *Clin Pharmacokinet*. 2016;**55**(9):1059–1077. doi:10.1007/s40262-016-0383-6
 53. Erstad BL, Patanwala AE. Ketamine for analgosedation in critically ill patients. *J Crit Care*. 2016;**35**:145–149. doi:10.1016/j.jcrrc.2016.05.016
 54. Zanos P, Moaddel R, Morris PJ, et al. Ketamine and ketamine metabolite pharmacology: insights into therapeutic mechanisms. *Pharmacol Rev*. 2018;**70**(3):621–660. doi:10.1124/pr.117.015198
 55. Hess EM, Riggs LM, Michaelides M, Gould TD. Mechanisms of ketamine and its metabolites as antidepressants. *Biochem Pharmacol*. 2022;**197**:114892 doi:10.1016/j.bcp.2021.114892
 56. Schep LJ, Slaughter RJ, Watts M, Mackenzie E, Gee P. The clinical toxicology of ketamine. *Clin Toxicol*. 2023;**61**(6):415–428. doi:10.1080/15563650.2023.2212125
 57. Kurato T, Kiuchi Y, Yasuhara H, Oguchi K, Goto H, KJJo A. N-methyl-D-aspartate receptor agonists and antagonists partially affect the duration of ketamine anesthesia in the rat. *J Anesth*. 1995;**9**:243–246.
 58. Strasburger S, Bhimani P, Kaabe J, et al. What is the mechanism of Ketamine's rapid-onset antidepressant effect? A concise overview of the surprisingly large number of possibilities. *J Clin Pharm Ther*. 2017;**42**(2):147–154.
 59. Kang MJY, Hawken E, Vazquez GH. The mechanisms behind rapid antidepressant effects of ketamine: a systematic review with a focus on molecular neuroplasticity. *Front Psychiatry*. 2022;**13**:860882 doi:10.3389/fpsy.2022.860882
 60. Krystal JH, Kavalali ET, Monteggia LM. Ketamine and rapid antidepressant action: new treatments and novel synaptic signaling mechanisms. *Neuropsychopharmacology*. 2024;**49**(1):41–50. doi:10.1038/s41386-023-01629-w
 61. Guirimand F, Dupont X, Brasseur L, Chauvin M, Bouhassira D. The effects of ketamine on the temporal summation (wind-up) of the R(III) nociceptive flexion reflex and pain in humans. *Anesth Analg*. 2000;**90**(2):408–414. doi:10.1097/0000539-200002000-00031
 62. Wu L-J, Zhuo M. Targeting the NMDA receptor subunit nr2b for the treatment of neuropathic pain. *Neurotherapeutics*. 2009;**6**(4):693–702. doi:https://doi.org/10.1016/j.nurt.2009.07.008
 63. Monteggia LM, Gideons E, Kavalali ET. The role of eukaryotic elongation factor 2 kinase in rapid antidepressant action of ketamine. *Biol Psychiatry*. 2013;**73**(12):1199–1203. doi:10.1016/j.biopsych.2012.09.006
 64. Mihaljević S, Pavlović M, Reiner K, Čačić M. Therapeutic mechanisms of ketamine. *Psychiatr Danub*. 2020;**32**(3–4):325–333. doi:10.24869/psyd.2020.325
 65. Jacob TC, Moss SJ, Jurd R. GABA(A) receptor trafficking and its role in the dynamic modulation of neuronal inhibition. *Nat Rev Neurosci*. 2008;**9**(5):331–343. doi:10.1038/nrn2370
 66. Wang D-S, Penna A, Orser BA. Ketamine increases the function of γ -aminobutyric acid type A receptors in hippocampal and cortical neurons. *Anesthesiology*. 2017;**126**(4):666–677. doi:10.1097/aln.0000000000001483
 67. Williams NR, Heifets BD, Blasey C, et al. Attenuation of antidepressant effects of ketamine by opioid receptor antagonism. *Am J Psychiatry*. 2018;**175**(12):1205–1215. doi:10.1176/appi.ajp.2018.18020138
 68. Levinstein MR, Budinich RC, Bonaventura J, et al. redefining ketamine pharmacology for antidepressant action. Synergistic NMDA and opioid receptor interactions? *Am J Psychiatry*. 2025;**182**(3):247–258. doi:10.1176/appi.ajp.20240378
 69. Berman RM, Cappiello A, Anand A, et al. Antidepressant effects of ketamine in depressed patients. *Biol Psychiatry* 15 2000;**47**(4):351–354. doi:10.1016/s0006-3223(99)00230-9
 70. Niesters M, Martini C, Dahan A. Ketamine for chronic pain: risks and benefits. *Br J Clin Pharmacol*. 2014;**77**(2):357–367. doi:10.1111/bcp.12094
 71. Jiang C, DiLeone RJ, Pittenger C, Duman RS. The endogenous opioid system in the medial prefrontal cortex mediates ketamine's antidepressant-like actions. *Transl Psychiatry*. 2024;**14**(1):90 doi:10.1038/s41398-024-02796-0
 72. Ago Y, Yokoyama R, Asano S, Hashimoto H. Roles of the monoaminergic system in the antidepressant effects of ketamine and its metabolites. *Neuropharmacology*. 2023;**223**:109313 doi:10.1016/j.neuropharm.2022.109313
 73. Du Y, Du L, Cao J, et al. Levo-tetrahydropalmatine inhibits the acquisition of ketamine-induced conditioned place preference by regulating the expression of ERK and CREB phosphorylation in rats. *Behav Brain Res*. 2017;**317**:367–373.
 74. Kokkinou M, Irvine EE, Bonsall DR, et al. Mesocorticolimbic circuit mechanisms underlying the effects of ketamine on dopamine: a translational imaging study. *bioRxiv*. 2019;748665
 75. Belujon P, AAJBp G. Restoring mood balance in depression: ketamine reverses deficit in dopamine-dependent synaptic plasticity. *Biol Psychiatry*. 2014;**76**(12):927–936.
 76. Hashimoto K, Kakiuchi T, Ohba H, Nishiyama S, Tsukada H. Reduction of dopamine D 2/3 receptor binding in the striatum after a single administration of esketamine, but not R-ketamine: a PET study in conscious monkeys. *Eur Arch Psychiatry Clin Neurosci*. 2017;**267**:173–176.
 77. Bærentzen SL, Thomsen JB, Thomsen MB, et al. Subanesthetic S-ketamine does not acutely alter striatal dopamine transporter binding in healthy Sprague Dawley female rats. *Synapse*. 2024;**78**(4):e22294
 78. Breier A, Adler CM, Weisenfeld N, et al. Effects of NMDA antagonism on striatal dopamine release in healthy subjects: application of a novel PET approach. *Synapse*. 1998;**29**(2):142–147. doi:10.1002/(sici)1098-2396(199806)29:2<142::Aid-syn5>3.0.Co;2-7
 79. Kokkinou M, Ashok AH, Howes OD. The effects of ketamine on dopaminergic function: meta-analysis and review of the implications for neuropsychiatric disorders. *Mol Psychiatry*. 2018;**23**(1):59–69.
 80. Li X, Liu M, Li Y, et al. Effects of ketamine on monoamine neurotransmitters and GABA in embryonic neurocytes from fetal rat. *Turk J Vet Anim Sci* 2017;**41**(3):414–424.
 81. Ago Y, Tanabe W, Higuchi M, et al. (R)-ketamine induces a greater increase in prefrontal 5-HT release than (S)-ketamine and ketamine metabolites via an AMPA receptor-independent mechanism. *Int J Neuropsychopharmacol*. 2019;**22**(10):665–674.
 82. Fukumoto K, Iijima M, Funakoshi T, SJIJoN C. Role of 5-HT1A receptor stimulation in the medial prefrontal cortex in the sustained antidepressant effects of ketamine. *Int J Neuropsychopharmacol*. 2018;**21**(4):371–381.
 83. Sato K, Wu J, Kikuchi T, Wang Y, Watanabe I, Okumura F. Differential effects of ketamine and pentobarbitone on acetylcholine release from the rat hippocampus and striatum. *Br J Anaesthesia*. 1996;**77**(3):381–384. doi:10.1093/bja/77.3.381
 84. Mimura M, Namiki A, Kishi R, Ikeda T, Miyake H. Antagonistic effect of physostigmine on ketamine-induced anesthesia. *Psychopharmacology*. 1990;**102**(3):399–403. doi:10.1007/bf02244110
 85. Cavalleri L, Dassieni I, Marcotto GS, Zoli M, Merlo Pich E, Collo G. Cortisol-dependent impairment of dendrite plasticity in human dopaminergic neurons derived from hiPSCs is restored by ketamine: relevance for

- major depressive disorders. *Neurosci Appl*. 2024;3:104049 doi:<https://doi.org/10.1016/j.nsa.2024.104049>
86. Granak S, Hoschl C, Ovsepien SV. Dendritic spine remodeling and plasticity under general anesthesia. *Brain Struct Funct*. 2021;226(7):2001–2017. doi:10.1007/s00429-021-02308-6
 87. Siker ES. Current usefulness of ketamine in anesthetic practice. *Anesth Analg*. 1971;50(6):1057
 88. Kohtala S. Ketamine–50 years in use: from anesthesia to rapid antidepressant effects and neurobiological mechanisms. *Pharmacol Rep: PR*. 2021;73(2):323–345. doi:10.1007/s43440-021-00232-4
 89. Hirota K, Lambert DG. Ketamine; history and role in anesthetic pharmacology. *Neuropharmacology*. 2022;216:109171 doi:10.1016/j.neuropharm.2022.109171
 90. Thompson J, Moppett I, Wiles M. *Smith and Aitkenhead's Textbook of Anaesthesia*. Seventh ed. Elsevier Health Sciences; 2019
 91. White Paul F, Ham J, Way Walter L, Trevor A. Pharmacology of ketamine isomers in surgical patients. *Anesthesiology*. 1980;52(3):231–239. doi:10.1097/0000542-198003000-00008
 92. Schroeder KE, Irwin ZT, Gaidica M, et al. Disruption of corticocortical information transfer during ketamine anesthesia in the primate brain. *NeuroImage*. 2016;134:459–465. doi:10.1016/j.neuroimage.2016.04.039
 93. Mathew CAZSJ, Mathew SJ, Zarate CA. *Ketamine for Treatment-Resistant Depression*. Springer; 2016
 94. Gitlin J, Chamadia S, Locascio JJ, et al. Dissociative and analgesic properties of ketamine are independent. *Anesthesiology*. 2020;133(5):1021–1028. doi:10.1097/ALN.0000000000003529
 95. Sleight J, Pullon RM, Vlisides PE, Warnaby CE. Electroencephalographic slow wave dynamics and loss of behavioural responsiveness induced by ketamine in human volunteers. *Br J Anaesthesia*. 2019;123(5):592–600. doi:10.1016/j.bja.2019.07.021
 96. Vlisides PE, Bel-Bahar T, Lee U, et al. Neurophysiologic correlates of ketamine sedation and anesthesia: a high-density electroencephalography study in healthy volunteers. *Anesthesiology*. 2017;127(1):58–69. doi:10.1097/ALN.0000000000001671
 97. Marland S, Ellerton J, Andolfatto G, et al. Ketamine: use in anesthesia. *CNS Neurosci Ther*. 2013;19(6):381–389. doi:<https://doi.org/10.1111/cns.12072>
 98. White Paul F, Way Walter L, Trevor A J. Ketamine—its pharmacology and therapeutic uses. *Anesthesiology*. 1982;56(2):119–136. doi:10.1097/0000542-198202000-00007
 99. Gao M, Rejaei D, Liu H. Ketamine use in current clinical practice. *Acta Pharmacol Sin*. 2016;37(7):865–872. doi:10.1038/aps.2016.5
 100. Pitetti RD, Singh S, Pierce MC. Safe and efficacious use of procedural sedation and analgesia by nonanesthesiologists in a pediatric emergency department. *Arch Ped Adoles Med*. 2003;157(11):1090–1096. doi:10.1001/archpedi.157.11.1090
 101. Motov S, Rosenbaum S, Vilke GM, Nakajima Y. Is there a role for intravenous subdissociative-dose ketamine administered as an adjunct to opioids or as a single agent for acute pain management in the emergency department? *J Emerg Med*. 2016;51(6):752–757. doi:10.1016/j.jemermed.2016.07.087
 102. Loftus RW, Yeager MP, Clark JA, et al. Intraoperative ketamine reduces perioperative opiate consumption in opiate-dependent patients with chronic back pain undergoing back surgery. *Anesthesiology*. 2010;113(3):639–646. doi:10.1097/ALN.0b013e3181e90914
 103. Brinck EC, Tiippana E, Heesen M, et al. Perioperative intravenous ketamine for acute postoperative pain in adults. *Cochrane Database Syst Rev*. 2018;12(12):Cd012033 doi:10.1002/14651858.CD012033.pub4
 104. Steinberg AC, Schimpf MO, White AB, et al. Preemptive analgesia for postoperative hysterectomy pain control: systematic review and clinical practice guidelines. *Am J Obstet Gynecol*. 2017;217(3):303–313.e6. doi:10.1016/j.ajog.2017.03.013
 105. Meyer-Frießem CH, Lipke E, Weibel S, et al. Perioperative ketamine for postoperative pain management in patients with preoperative opioid intake: a systematic review and meta-analysis. *J Clin Anesth*. 2022;78:110652 doi:10.1016/j.jclinane.2022.110652
 106. Song JW, Shim JK, Song Y, Yang SY, Park SJ, Kwak YL. Effect of ketamine as an adjunct to intravenous patient-controlled analgesia, in patients at high risk of postoperative nausea and vomiting undergoing lumbar spinal surgery. *BJA: Br J Anaesth*. 2013;111(4):630–635. doi:10.1093/bja/aet192
 107. Mehta SD, Smyth D, Vasilopoulos T, Friedman J, Sappenfield JW, Alex G. Ketamine infusion reduces narcotic requirements following gastric bypass surgery: a randomized controlled trial. *Surg Obes Relat Dis*. 2021;17(4):737–743. doi:10.1016/j.soard.2020.11.027
 108. Mulier JP. Is opioid-free general anesthesia for breast and gynecological surgery a viable option? *Curr Opin Anaesthesiol*. 2019;32(3):257–262. doi:10.1097/aco.0000000000000716
 109. Endeshaw AS, Aligaz EM, Molla MT, et al. Review of clinical evidence of caudal block for postoperative analgesia in children with ketamine added local anesthetics. *Ann Med Surg*. 2012;75:103480. doi:10.1016/j.amsu.2022.103480
 110. Dahmani S, Michelet D, Abback PS, et al. Ketamine for perioperative pain management in children: a meta-analysis of published studies. *Paediatr Anaesth*. 2011;21(6):636–652. doi:10.1111/j.1460-9592.2011.03566.x
 111. Schnabel A, Poepping DM, Kranke P, Zahn PK, Pogatzki-Zahn EM. Efficacy and adverse effects of ketamine as an additive for paediatric caudal anaesthesia: a quantitative systematic review of randomized controlled trials. *Br J Anaesth*. 2011;107(4):601–611. doi:10.1093/bja/aer258
 112. Jha AK, Bhardwaj N, Yaddanapudi S, Sharma RK, Mahajan JK. A randomized study of surgical site infiltration with bupivacaine or ketamine for pain relief in children following cleft palate repair. *Paediatr Anaesth*. 2013;23(5):401–406. doi:10.1111/pan.12124
 113. Javid MJ, Hajjifafari M, Hajipour A, Makarem J, Khazaeipour Z. Evaluation of a low dose ketamine in post tonsillectomy pain relief: a randomized trial comparing intravenous and subcutaneous ketamine in pediatrics. *Anesthesiol Pain Med*. 2012;2(2):85–89. doi:10.5812/aapm.4399
 114. Norambuena C, Yañez J, Flores V, Puentes P, Carrasco P, Villena R. Oral ketamine and midazolam for pediatric burn patients: a prospective, randomized, double-blind study. *J Pediatr Surg*. 2013;48(3):629–634. doi:10.1016/j.jpedsurg.2012.08.018
 115. Ricciardelli RM, Walters NM, Pomerantz M, et al. The efficacy of ketamine for postoperative pain control in adolescent patients undergoing spinal fusion surgery for idiopathic scoliosis. *Spine Deform*. 2020;8(3):433–440. doi:10.1007/s43390-020-00073-w
 116. Bauchat JR, Higgins N, Wojciechowski KG, McCarthy RJ, Toledo P, Wong CA. Low-dose ketamine with multimodal postcesarean delivery analgesia: a randomized controlled trial. *Int J Obstet Anesth*. 2011;20(1):3–9. doi:10.1016/j.ijoa.2010.10.002
 117. Bilgen S, Köner O, Türe H, Menda F, Fiçicioğlu C, Aykaç B. Effect of three different doses of ketamine prior to general anaesthesia on postoperative pain following Caesarean delivery: a prospective randomized study. *Minerva Anestesiol*. 2012;78(4):442–449.
 118. Leal PC, Sakata RK, Salomão R, Sadatsune EJ, Issy AM. Assessment of the effect of ketamine in combination with remifentanyl on postoperative pain. *Br J Anaesthesiol*. 2013;63(2):178–182. doi:10.1016/s0034-7094(13)70211-3
 119. Leal PC, Salomão R, Brunialti MK, Sakata RK. Evaluation of the effect of ketamine on remifentanyl-induced hyperalgesia: a double-blind, randomized study. *J Clin Anesth*. 2015;27(4):331–337. doi:10.1016/j.jclinane.2015.02.002
 120. Sahin L, Sahin M, Aktas O, Kilic E, Mandollu E. Comparison of propofol/ketamine versus propofol/alfentanil for dilatation and curettage. *Clin Exp Obstet Gynecol*. 2012;39(1):72–75.
 121. Kilic E, Demiriz B, Isikay N, Yıldırım AE, Can S, Basmacı C. Alfentanil versus ketamine combined with propofol for sedation during upper gastrointestinal system endoscopy in morbidly obese patients. *Saudi Med J*. 2016;37(11):1191–1195. doi:10.15537/smj.2016.11.14557
 122. Volcheck MM, Graham SM, Fleming KC, Mohabbat AB, Luedtke CA. Central sensitization, chronic pain, and other symptoms: better understanding, better management. *Cleve Clin J Med*. 2023;90(4):245–254. doi:10.3949/ccjm.90a.22019
 123. Finnerup NB, Kuner R, Jensen TS. Neuropathic pain: from mechanisms to treatment. *Physiol Rev*. 2021;101(1):259–301. doi:10.1152/physrev.00045.2019
 124. Pan L, Li T, Wang R, Deng W, Pu H, Deng M. Roles of phosphorylation of n-methyl-d-aspartate receptor in chronic pain. *Cell Mol Neurobiol*. 2023;43(1):155–175. doi:10.1007/s10571-022-01188-6

125. Culp C, Kim HK, Abdi S. Ketamine use for cancer and chronic pain management. *Front Pharmacol.* 2020;11:599721 doi:10.3389/fphar.2020.599721
126. Velzen MV, Dahan JDC, van Dorp ELA, Mogil JS, Hooijmans CR, Dahan A. Efficacy of ketamine in relieving neuropathic pain: a systematic review and meta-analysis of animal studies. *Pain.* 2021;162(9):2320–2330. doi:10.1097/j.pain.0000000000002231
127. Cohen SP, Bhatia A, Buvanendran A, et al. Consensus guidelines on the use of intravenous ketamine infusions for chronic pain from the American Society of regional anesthesia and pain medicine. *Am Acad Pain Med Am Soc Anesthesiol.* 2018;43(5):521–546. doi:10.1097/AAP.0000000000000808
128. Riccardi A, Guarino M, Serra S, et al. Narrative review: low-dose ketamine for pain management. *J Clin Med.* 2023;12(9):3256. doi:10.3390/jcm12093256.
129. Barreveld AM, Correll DJ, Liu X, et al. Ketamine decreases postoperative pain scores in patients taking opioids for chronic pain: results of a prospective, randomized, double-blind study. *Pain Med.* 2013;14(6):925–934. doi:10.1111/pme.12086
130. Boenigk K, Echevarria GC, Nisimov E, et al. Low-dose ketamine infusion reduces postoperative hydromorphone requirements in opioid-tolerant patients following spinal fusion: a randomised controlled trial. *Eur J Anaesthesiol.* 2019;36(1):8–15. doi:10.1097/eja.0000000000000877
131. Abouarab AH, Brülle R, Aboukila MY, Weibel S, Schnabel A. Efficacy and safety of perioperative ketamine for the prevention of chronic post-surgical pain: a meta-analysis. *Pain Pract.* 2024;24(3):553–566. doi:10.1111/papr.13314
132. Griffiths HM. Low-dose ketamine infusions for chronic pain management: does this qualify as evidence-based practice? *Bri J Pain.* 2023;17(5):457–467. doi:10.1177/20494637231182804
133. Jiao J, Fan J, Zhang Y, Chen L. Efficacy and safety of ketamine to treat cancer pain in adult patients: a systematic review. *J Pain Sympt Manag.* 2024;67(3):e185–e210. doi:10.1016/j.jpainsymman.2023.11.004
134. Israel JE, St Pierre S, Ellis E, et al. Ketamine for the treatment of chronic pain: a comprehensive review. *Health Psychol Res.* 2021;9(1):25535 doi:10.52965/001c.25535
135. Bahji A, Zarate CA, Vazquez GH. Ketamine for bipolar depression: a systematic review. *Int J Neuropsychopharmacol.* 2021;24(7):535–541. doi:10.1093/ijnp/pyab023
136. Marcantoni WS, Akoumba BS, Wassef M, et al. A systematic review and meta-analysis of the efficacy of intravenous ketamine infusion for treatment-resistant depression: January 2009–January 2019. *J Affect Disord.* 2020;277:831–841. doi:10.1016/j.jad.2020.09.007
137. McIntyre RS, Carvalho IP, Lui LMW, et al. The effect of intravenous, intranasal, and oral ketamine in mood disorders: a meta-analysis. *J Affect Disord.* 2020;276:576–584. doi:10.1016/j.jad.2020.06.050
138. Anand A, Mathew SJ, Sanacora G, et al. Ketamine versus ECT for non-psychotic treatment-resistant major depression. *N Engl J Med.* 2023;388(25):2315–2325. doi:10.1056/NEJMoa2302399
139. Monteggia LM, Zarate C. Antidepressant actions of ketamine: from molecular mechanisms to clinical practice. *Curr Opin Neurobiol.* 2015;30:139–143. doi:10.1016/j.conb.2014.12.004
140. Murrrough JW, Perez AM, Pillemer S, et al. Rapid and longer-term antidepressant effects of repeated ketamine infusions in treatment-resistant major depression. *Biol Psychiatry.* 2013;74(4):250–256. doi:10.1016/j.biopsych.2012.06.022
141. Gideons ES, Kavalali ET, Monteggia LM. Mechanisms underlying differential effectiveness of memantine and ketamine in rapid antidepressant responses. 2014;111(23):8649–8654. doi:10.1073/pnas.1323920111
142. McIntyre RS, Rosenblat JD, Nemeroff CB, et al. Synthesizing the evidence for ketamine and esketamine in treatment-resistant depression: an international expert opinion on the available evidence and implementation. *Am J Psychiatry.* 2021;178(5):383–399. doi:10.1176/appi.ajp.2020.20081251
143. Papakostas GI, Salloum NC, Hock RS, et al. Efficacy of esketamine augmentation in major depressive disorder: a meta-analysis. *J Clin Psychiatry.* 2020;81(4): doi:10.4088/JCP.19r12889
144. Bahji A, Vazquez GH, Zarate CA. Comparative efficacy of racemic ketamine and esketamine for depression: a systematic review and meta-analysis. *J Affect Disord.* 2021;278:542–555. doi:10.1016/j.jad.2020.09.071
145. Yang S, Wang J, Li X, et al. Adverse effects of esketamine for the treatment of major depression disorder: findings from randomized controlled trials. *Psychiatr Quart.* 2022;93(1):81–95. doi:10.1007/s11126-020-09871-x
146. Horowitz MA, Moncrieff J. Are we repeating mistakes of the past? A review of the evidence for esketamine. *Br J Psychiatry.* 2021;219(5):614–617. doi:10.1192/bjp.2020.89
147. Jiang Y, Du Z, Shen Y, Zhou Q, Zhu H. The correlation of Esketamine with specific adverse events: a deep dive into the FAERS database. *Eur Arch Psychiatry Clin Neurosci.* 2023; doi:10.1007/s00406-023-01732-5
148. Wajs E, Aluisio L, Holder R, et al. Esketamine nasal spray plus oral antidepressant in patients with treatment-resistant depression: assessment of long-term safety in a phase 3, open-label study (SUSTAIN-2). *J Clin Psychiatry.* 2020;81(3): doi:10.4088/JCP.19m12891
149. Domany Y, McCullumsmith CB. Single fixed-dose intranasal ketamine for alleviation of acute suicidal ideation. an emergency department, trans-diagnostic approach: a randomized, double-blind, placebo-controlled, proof-of-concept trial. *Arch Suicide Res.* 2022;26(3):1250–1265. doi:10.1080/13811118.2021.1878078
150. Murrrough JW, Soleimani L, DeWilde KE, et al. Ketamine for rapid reduction of suicidal ideation: a randomized controlled trial. *Psychol Med.* 2015;45(16):3571–3580. doi:10.1017/s0033291715001506
151. Xiong J, Lipsitz O, Chen-Li D, et al. The acute antisuicidal effects of single-dose intravenous ketamine and intranasal esketamine in individuals with major depression and bipolar disorders: a systematic review and meta-analysis. *J Psychiatr Res.* 2021;134:57–68. doi:10.1016/j.jpsy-chires.2020.12.038
152. Phillips JL, Norris S, Talbot J, et al. Single and repeated ketamine infusions for reduction of suicidal ideation in treatment-resistant depression. *Neuropsychopharmacology.* 2020;45(4):606–612. doi:10.1038/s41386-019-0570-x
153. Witt K, Potts J, Hubers A, et al. Ketamine for suicidal ideation in adults with psychiatric disorders: a systematic review and meta-analysis of treatment trials. *Aust N Z J Psychiatry.* 2020;54(1):29–45. doi:10.1177/0004867419883341
154. Vitek G, Langenfeld R, Walters RW, Elson A, Driscoll D, Ramaswamy S. Therapeutic and safety outcomes of intravenous ketamine for treatment-refractory depression in a veteran population: a case series. *Mil Med.* 2022;188(7–8):e2242–e2248. doi:10.1093/milmed/usac395
155. Lee Y, Syeda K, Maruschak NA, et al. A new perspective on the anti-suicide effects with ketamine treatment: a procognitive effect. *J Clin Psychopharmacol.* 2016;36(1):50–56. doi:10.1097/jcp.0000000000000441
156. Wilkinson ST, Ballard ED, Bloch MH, et al. The effect of a single dose of intravenous ketamine on suicidal ideation: a systematic review and individual participant data meta-analysis. *Am J Psychiatry.* 2018;175(2):150–158. doi:10.1176/appi.ajp.2017.17040472
157. Vieira F, Correia-Melo FS, Santos-Lima C, et al. Ketamine and esketamine augmentation for suicidal ideation: a randomized, double-blinded clinical trial. *Gen Hosp Psychiatry.* 2021;68:97–99. doi:10.1016/j.genhospsych.2020.12.011
158. Kumari S, Chaudhry HA, Sagot A, et al. Exploring esketamine's therapeutic outcomes as an FDA-designated breakthrough for treatment-resistant depression and major depressive disorder with suicidal intent. A narrative review. *Cureus.* 2024;16(2):e53987 doi:10.7759/cureus.53987
159. Fu DJ, Ionescu DF, Li X, et al. Esketamine nasal spray for rapid reduction of major depressive disorder symptoms in patients who have active suicidal ideation with intent: double-blind, randomized study (ASPIRE I). *J Clin Psychiatry.* 2020;81(3): doi:10.4088/JCP.19m13191
160. Ionescu DF, Fu DJ, Qiu X, et al. Esketamine nasal spray for rapid reduction of depressive symptoms in patients with major depressive disorder who have active suicide ideation with intent: results of a phase 3, double-blind, randomized study (ASPIRE II). *Int J Neuropsychopharmacol.* 2021;24(1):22–31. doi:10.1093/ijnp/pyaa068
161. Jollant F, Colle R, Nguyen TML, et al. Ketamine and esketamine in suicidal thoughts and behaviors: a systematic review. *Therap Adv Psychopharmacol.* 2023;13:20451253231151327 doi:10.1177/20451253231151327
162. Evers AG, Murrrough JW, Charney DS, Costi S. Ketamine as a prophylactic resilience-enhancing agent. *Front Psychiatry.* 2022;13:833259 doi:10.3389/fpsy.2022.833259

163. McGowan JC, LaGamma CT, Lim SC, et al. Prophylactic ketamine attenuates learned fear. *Neuropsychopharmacology*. 2017;**42**(8):1577–1589. doi:10.1038/npp.2017.19
164. Parise EM, Parise LF, Sial OK, et al. The resilient phenotype induced by prophylactic ketamine exposure during adolescence is mediated by the ventral tegmental area–nucleus accumbens pathway. *Biol Psychiatry*. 2021;**90**(7):482–493. doi:10.1016/j.biopsych.2021.05.002
165. Allen CA, Ivester JR. Ketamine for pain management—side effects & potential adverse events. *Pain Manag Nurs*. 2017;**18**(6):372–377. doi:10.1016/j.pmn.2017.05.006
166. Short B, Fong J, Galvez V, Shelker W, Loo CK. Side-effects associated with ketamine use in depression: a systematic review. *Lancet Psychiatry*. 2018;**5**(1):65–78. doi:10.1016/s2215-0366(17)30272-9
167. Acevedo-Diaz EE, Cavanaugh GW, Greenstein D, et al. Comprehensive assessment of side effects associated with a single dose of ketamine in treatment-resistant depression. *J Affect Disord*. 2020;**263**:568–575. doi:10.1016/j.jad.2019.11.028
168. Elia N, Tramèr MR. Ketamine and postoperative pain—a quantitative systematic review of randomised trials. *Pain*. 2005;**113**(1–2):61–70. doi:10.1016/j.pain.2004.09.036
169. Stoker AD, Rosenfeld DM, Buras MR, Alvord JM, Gorlin AW. Evaluation of clinical factors associated with adverse drug events in patients receiving sub-anesthetic ketamine infusions. *J Pain Res*. 2019;**12**:3413–3421. doi:10.2147/jpr.S217005
170. Grabski M, Borissova A, Marsh B, Morgan CJA, Curran HV. Ketamine as a mental health treatment: are acute psychoactive effects associated with outcomes? A systematic review. *Behav Brain Res*. 2020;**392**:112629 doi:10.1016/j.bbr.2020.112629
171. Lineham A, Avila-Quintero VJ, Bloch MH, Dwyer J. The relationship between acute dissociative effects induced by ketamine and treatment response in adolescent patients with treatment-resistant depression. *J Child Adolesc Psychopharmacol*. 2023;**33**(1):20–26. doi:10.1089/cap.2022.0086
172. Bayes A, Short B, Zarate CA, et al. The Ketamine Side Effect Tool (KSET): a comprehensive measurement-based safety tool for ketamine treatment in psychiatry. *J Affect Disord*. 2022;**308**:44–46. doi:10.1016/j.jad.2022.04.020
173. van Schalkwyk GI, Wilkinson ST, Davidson L, Silverman WK, Sanacora G. Acute psychoactive effects of intravenous ketamine during treatment of mood disorders: analysis of the clinician administered dissociative state scale. *J Affect Disord*. 2018;**227**:11–16. doi:10.1016/j.jad.2017.09.023
174. Stefanovic A, Brandner B, Klaassen E, et al. Acute and chronic effects of ketamine on semantic priming: modeling schizophrenia? *J Clin Psychopharmacol*. 2009;**29**(2):124–133. doi:10.1097/JCP.0b013e31819a4b91
175. Honey GD, O’Loughlin C, Turner DC, Pomarol-Clotet E, Corlett PR, Fletcher PC. The effects of a subpsychotic dose of ketamine on recognition and source memory for agency: implications for pharmacological modeling of core symptoms of schizophrenia. *Neuropsychopharmacology*. 2006;**31**(2):413–423. doi:10.1038/sj.npp.1300846
176. Pennybaker SJ, Luckenbaugh DA, Park LT, Marquardt CA, Zarate CA. ketamine and psychosis history: antidepressant efficacy and psychotomimetic effects postinfusion. *Biol Psychiatry*. 2017;**82**(5):e35–e36. doi:10.1016/j.biopsych.2016.08.041
177. Malhotra AK, Pinals DA, Adler CM, et al. Ketamine-induced exacerbation of psychotic symptoms and cognitive impairment in neuroleptic-free schizophrenics. *Neuropsychopharmacology*. 1997;**17**(3):141–150. doi:10.1016/s0893-133x(97)00036-5
178. Tashakkori M, Ford A, Dragovic M, Gabriel L, Waters F. The time course of psychotic symptom side effects of ketamine in the treatment of depressive disorders: a systematic review and meta-analysis. *Australas Psychiatry*. 2021;**29**(1):80–87. doi:10.1177/1039856220961642
179. Bartova L, Papageorgiou K, Milenkovic I, et al. Rapid antidepressant effect of S-ketamine in schizophrenia. *Eur Neuropsychopharmacol*. 2018;**28**(8):980–982. doi:10.1016/j.euroneuro.2018.05.007
180. Morgan CJ, Muetzelfeldt L, Curran HV. Consequences of chronic ketamine self-administration upon neurocognitive function and psychological wellbeing: a 1-year longitudinal study. *Addiction*. 2010;**105**(1):121–133. doi:10.1111/j.1360-0443.2009.02761.x
181. Morrison RL, Fedgchin M, Singh J, et al. Effect of intranasal esketamine on cognitive functioning in healthy participants: a randomized, double-blind, placebo-controlled study. *Psychopharmacology*. 2018;**235**(4):1107–1119. doi:10.1007/s00213-018-4828-5
182. Gill H, Gill B, Rodrigues NB, et al. The effects of ketamine on cognition in treatment-resistant depression: a systematic review and priority avenues for future research. *Neurosci Biobehav Rev*. 2021;**120**:78–85. doi:10.1016/j.neubiorev.2020.11.020
183. Sigtermans M, Dahan A, Mooren R, et al. S(+)-ketamine effect on experimental pain and cardiac output: a population pharmacokinetic-pharmacodynamic modeling study in healthy volunteers. *Anesthesiology*. 2009;**111**(4):892–903. doi:10.1097/ALN.0b013e3181b437b1
184. Gelissen HP, Epema AH, Henning RH, Krijnen HJ, Hennis PJ, den Hertog A. Inotropic effects of propofol, thiopental, midazolam, etomidate, and ketamine on isolated human atrial muscle. *Anesthesiology*. 1996;**84**(2):397–403. doi:10.1097/0000542-199602000-00019
185. Kalsi SS, Wood DM, Dargan PI. The epidemiology and patterns of acute and chronic toxicity associated with recreational ketamine use. *Emerg Health Threats J*. 2011;**15**:7107 doi:10.3402/ehjt.v4i0.7107
186. Szarmach J, Cubała WJ, Włodarczyk A, Wiglusz MS. Short-term ketamine administration in treatment-resistant depression: focus on cardiovascular safety. *Psychiatr Danub*. 2019;**31**(Suppl 3):585–590.
187. Riva-Posse P, Reiff CM, Edwards JA, et al. Blood pressure safety of subanesthetic ketamine for depression: a report on 684 infusions. *J Affect Disorders*. 2018;**236**:291–297. doi:10.1016/j.jad.2018.02.025
188. Rodrigues NB, McIntyre RS, Lipsitz O, et al. Safety and tolerability of IV ketamine in adults with major depressive or bipolar disorder: results from the Canadian rapid treatment center of excellence. *Exp Opin Drug Saf*. 2020;**19**(8):1031–1040. doi:10.1080/14740338.2020.1776699
189. Doherty T, Wajs E, Melkote R, Miller J, Singh JB, Weber MA. Cardiac safety of esketamine nasal spray in treatment-resistant depression: results from the clinical development program. *CNS Drugs*. 2020;**34**(3):299–310. doi:10.1007/s40263-020-00699-4
190. Mak SK, Chan MT, Bower WF, et al. Lower urinary tract changes in young adults using ketamine. *J Urol*. 2011;**186**(2):610–614. doi:10.1016/j.juro.2011.03.108
191. Findeis H, Sauer C, Cleare A, Bauer M, Ritter P. Urothelial toxicity of esketamine in the treatment of depression. *Psychopharmacology*. 2020;**237**(11):3295–3302. doi:10.1007/s00213-020-05611-y
192. Jhang JF, Hsu YH, Kuo HC. Possible pathophysiology of ketamine-related cystitis and associated treatment strategies. *Int J Urol*. 2015;**22**(9):816–825. doi:10.1111/iju.12841
193. Wei YB, Yang JR, Yin Z, Guo Q, Liang BL, Zhou KQ. Genitourinary toxicity of ketamine. *Hong Kong Med J*. 2013;**19**(4):341–348. doi:10.12809/hkmj134013
194. Winstock AR, Mitcheson L, Gillatt DA, Cottrell AM. The prevalence and natural history of urinary symptoms among recreational ketamine users. *BJU Int*. 2012;**110**(11):1762–1766. doi:10.1111/j.1464-410X.2012.11028.x
195. Shahani R, Streutker C, Dickson B, Stewart RJ. Ketamine-associated ulcerative cystitis: a new clinical entity. *Urology*. 2007;**69**(5):810–812. doi:10.1016/j.urology.2007.01.038
196. Cheung RY, Chan SS, Lee JH, Pang AW, Choy KW, Chung TK. Urinary symptoms and impaired quality of life in female ketamine users: persistence after cessation of use. *Hong Kong Med J*. 2011;**17**(4):267–273.
197. Ng J, Lui LMW, Rosenblat JD, et al. Ketamine-induced urological toxicity: potential mechanisms and translation for adults with mood disorders receiving ketamine treatment. *Psychopharmacology*. 2021;**238**(4):917–926. doi:10.1007/s00213-021-05767-1
198. Wolff K, Winstock AR. Ketamine : from medicine to misuse. *CNS Drugs*. 2006;**20**(3):199–218. doi:10.2165/00023210-200620030-00003
199. Zhang MW, Harris KM, Ho RC. Is off-label repeat prescription of ketamine as a rapid antidepressant safe? Controversies, ethical concerns, and legal implications. *BMC Med Ethics*. 2016;**17**:4 doi:10.1186/s12910-016-0087-3
200. Morgan CJ, Mofeez A, Brandner B, Bromley L, Curran HV. Ketamine impairs response inhibition and is positively reinforcing in healthy volunteers: a dose-response study. *Psychopharmacology*. 2004;**172**(3):298–308. doi:10.1007/s00213-003-1656-y

201. Corkery JM, Hung WC, Claridge H, Goodair C, Copeland CS, Schifano F. Recreational ketamine-related deaths notified to the National Programme on Substance Abuse Deaths, England, 1997–2019. *J Psychopharmacol.* 2021;35(11):1324–1348. doi:10.1177/02698811211021588
202. Liu Y, Lin D, Wu B, Zhou W. Ketamine abuse potential and use disorder. *Brain Res Bull.* 2016;126(Pt 1):68–73. doi:10.1016/j.brainres-bull.2016.05.016
203. Savić Vujović K, Jotić A, Medić B, et al. Ketamine, an old-new drug: uses and abuses. *Pharmaceuticals.* 2023;17(1): doi:10.3390/ph17010016