

Guidelines for authors and submission template

Alan N. Other¹†, H. - C. Smith¹ and J. Q. Public²

¹Plasma Physics Laboratory, University of America, Somewhere, IN 12345, USA

²Department of Physics, University of Camford, Academic Street, Camford CF3 5QL, UK

(Received xx; revised xx; accepted xx)

This file contains instructions for authors planning to submit a paper to the *Journal of Plasma Physics*. These instructions were generated in L^AT_EX using the JPP style, so the L^AT_EX source file can be used as a template for submissions. The present paragraph appears in the `abstract` environment. All papers should feature a single-paragraph abstract of no more than 250 words, which provides a summary of the main aims and results.

1. How to submit to the *Journal of Plasma Physics*

Authors must submit using the online submission and peer review system, ScholarOne Manuscripts (formerly Manuscript Central) at <http://mc.manuscriptcentral.com/pla>. If visiting the site for the first time, users must create a new account by clicking on ‘register here’. Once logged in, authors should click on the ‘Corresponding Author Centre’, from which point a new manuscript can be submitted, with step-by-step instructions provided. Authors must at this stage specify the type of paper submitted: ‘original article’ or ‘review’ (see §5 for more details). Once your submission is completed you will receive an email confirmation.

Alternatively, authors can use the JPP template in the online collaborative authoring tool, Overleaf (<https://www.overleaf.com/latex/templates/latex-template-for-journal-of-plasma-physics-jpp/mtstpytyffvy>). Overleaf has an intuitive interface that helps authors to format the article in the JPP style. It also has features that enable collaboration with co-authors (the ability to share, highlight and comment), sophisticated version control and clean PDF version conversion. The ‘Submit’ button in Overleaf takes authors smoothly through to the ScholarOne Manuscripts system.

2. ORCID

JPP strongly encourages all corresponding authors to identify themselves using ORCID when submitting a manuscript to the journal. ORCID provides a unique identifier for researchers and, through integration in key research workflows such as publication and grant applications, provides the following benefits:

(i) Discoverability: ORCID increases the discoverability of your publications, by enabling smarter publisher systems and by helping readers to reliably find work that you’ve authored.

(ii) Convenience: As more organisations use ORCID, providing your ID or using it to register for services will automatically link activities to your ORCID profile, and will save you re-keying information multiple times.

† Email address for correspondence: jpp@damtp.cam.ac.uk

(iii) Keeping track: Your ORCID profile is a neat place to record and display (if you choose) validated information about your research activities.

If you don't already have an ID, you can create one during submission to JPP. You can register for one directly from your user account on ScholarOne or via <https://orcid.org/register>. If you already have an ID, please use this when submitting by linking it to your ScholarOne user account. For ScholarOne: Simply log in to your account using your normal username and password. Edit your account by clicking on your name at the top right of the screen and from the dropdown menu, select 'E-Mail / Name'. Follow the instructions at the top of the screen to update your account.

3. Rules of submission

Submission of a paper implies a declaration by the author that the work has not previously been published, that it is not being considered for publication elsewhere and that it has not already been considered by a different editor of the Journal.

4. Types of paper

4.1. *Research article*

Regular submissions to JPP are termed 'research articles' and must contain original research. Papers should be written in a concise manner; though JPP has no page limit, each paper will be judged on its own merits, and those deemed excessive in length will be rejected or will require significant revision.

4.2. *Review*

Articles reviewing the developments and achievements within areas of interest to the plasma physics community are welcomed as 'reviews'. Reviews must be fully referenced and authors should take care to avoid excessive length.

4.3. *Letter*

JPP Letters are short communications (up to 12 pages in JPP style, not including abstract and references) of original research that is of highest quality and particular urgency. These papers receive expedited peer review and expedited copyediting/typesetting to accelerate publication.

4.4. *Special issue papers*

On occasion JPP publishes a collection of articles dedicated to a particular theme. In such cases papers are usually commissioned, and an additional paper type is temporarily made available. This paper type should be selected only for those papers being considered for the issue in question.

5. File types

Authors are strongly encouraged to compose their papers in L^AT_EX. We recommend trying the online collaborative authoring tool, Overleaf – which contains a JPP LaTeX template (<https://www.overleaf.com/latex/templates/latex-template-for-journal-of-plasma-physics-jpp/mtstpytyffvy>) and a number of other useful features. Upon clicking 'submit' Overleaf will create a clean PDF, which will be submitted as the main manuscript into the ScholarOne system, with the LaTeX source files provided in a supplementary zip file.

Alternatively authors can use the `jpp.cls` style file and supporting files provided in the Instructions for Contributors section of the JPP website, with the `jpp-instructions.tex` file serving as a template. A PDF of the \LaTeX file should then be generated and submitted via the submission site. The \LaTeX source file should not initially be submitted alongside the PDF, but upon provisional acceptance of the paper, the \LaTeX source file, along with individual figure files and a PDF of the final version, will need to be submitted for typesetting purposes.

Authors may also compose their papers in Word, though this will lead to the paper spending a longer period in production. If using Word, please note that equations must NOT be converted to picture format and the file must be saved with the option ‘make equation editable’.

6. Preparing your manuscript

Authors should write their papers clearly and concisely in English, adhering to JPP’s established style for notation, as provided in §11. We encourage the submission of online supplementary material alongside the manuscript where appropriate (see section 6.5). Metric units should be used throughout and all abbreviations must be defined at first use, even those deemed to be well known to the readership. British spelling must be used, and should follow the *Shorter Oxford English Dictionary*.

6.1. Embedded movies

From 2016 JPP will be publishing papers that contain multimedia content.

Authors who have multimedia content that they wish to include as part of their paper should include this within the body of the article. Authors should also include the individual multimedia files as part of their original submission with the file designation ‘movie’. The multimedia files should appear in the order in which they are first mentioned in the text and the multimedia files should be named accordingly.

Authors should also provide a relevant frame still from the video clip that they feel is representative of the content of the multimedia file. This will be used as an image that users can click on to start playback of the multimedia content

6.2. Figures

Figures should be as small as possible while displaying clearly all the information required, and with all lettering readable. Every effort should be taken to avoid figures that run over more than one page. There is no charge for colour figures. For review purposes figures should be embedded within the manuscript. Upon final acceptance, however, individual figure files will be required for production. These should be submitted in EPS or high-resolution TIFF format (1200 dpi for lines, 300 dpi for halftone, and 600 dpi for a mixture of lines and halftone). The minimum acceptable width of any line is 0.5pt. Each figure should be accompanied by a single caption, to appear beneath, and must be cited in the text. Figures should appear in the order in which they are first mentioned in the text and figure files must be named accordingly to assist the production process (and numbering of figures should continue through any appendices). For example see figures 1 and 2. Failure to follow figure guidelines may result in a request for resupply and a subsequent delay in the production process.

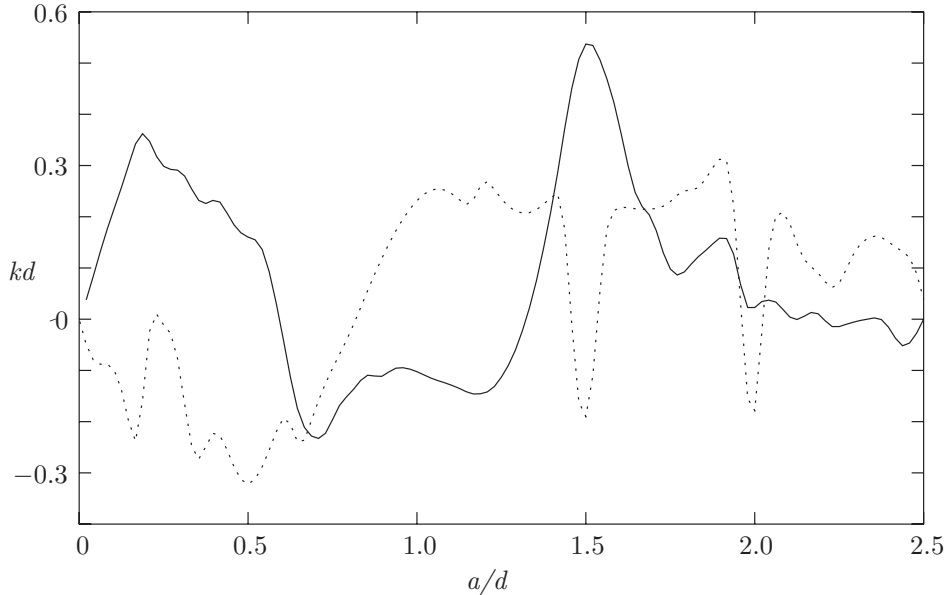


FIGURE 1. Trapped-mode wavenumbers, kd , plotted against a/d for three ellipses: —, $b/a = 1$; ·····, $b/a = 1.5$.

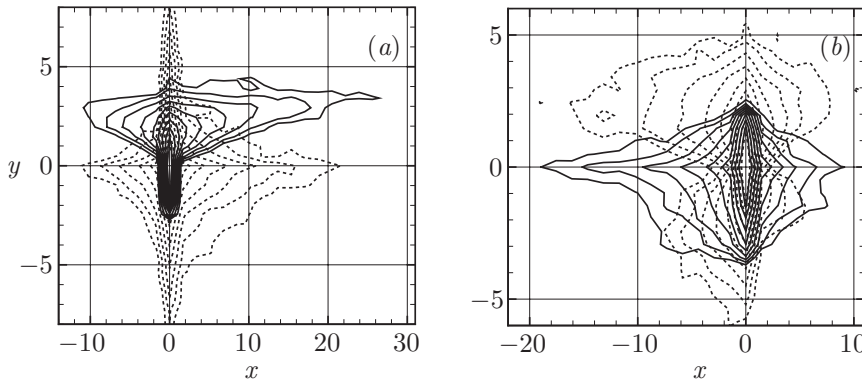


FIGURE 2. The features of the four possible modes corresponding to (a) periodic and (b) half-periodic solutions.

6.3. Tables

Tables, however small, must be numbered sequentially in the order in which they are mentioned in the text. The word *table* is only capitalized at the start of a sentence. See table 1 for an example.

6.4. Datasets

JPP encourages authors to make available the underlying dataset of their article. JPP has partnered with Zenodo to provide authors with the tools to do this. Zenodo is a free service that gives authors the ability to deposit and provide access to the data objects or datasets that underlie the figures and tables in their published research. Zenodo assigns all publically available uploads a DOI so that the datasets can be easily referenced. For

a/d	$M = 4$	$M = 8$	Callan <i>et al.</i>
0.1	1.56905	1.56	1.56904
0.3	1.50484	1.504	1.50484
0.55	1.39128	1.391	1.39131
0.7	1.32281	10.322	1.32288
0.913	1.34479	100.351	1.35185

TABLE 1. Values of kd at which trapped modes occur when $\rho(\theta) = a$

further information and guidelines on how to deposit a dataset in Zenodo, please read the separate document JPP-Zenodo guide for authors.

6.5. *Online supplementary material*

Relevant material which is not suitable for inclusion in the main article body, such as movies or numerical simulations/animations, can be uploaded as part of the initial submission. Each individual file must be accompanied by a separate caption and a suitable title (which can be provided in a Word file), such as ‘Movie 1’, and large files should be archived as a .zip or .tar file before uploading. Each individual supplementary file should be no more than 10MB. Upon publication these materials will then be hosted online alongside the final published article. Likewise, should there be detailed mathematical relations, tables or figures which are likely to be useful only to a few specialists, these can also be published online as supplementary material. Note that supplementary material is published ‘as is’, with no further production performed.

7. Editorial decisions

7.1. *Revision*

If a revision is requested, you should upload revised files following the same procedure as for submitting a new paper. You begin by clicking on ‘Manuscripts with decision’ in your Corresponding Author Center, and then on ‘Create a revision’. (Note that if you abandon the process before completing the submission, to continue the submission, you must click on ‘Revised manuscripts in draft’.) There is a new first page showing the decision letter and a space for your reply to the referee’s/editor’s comments. You also have the opportunity at this stage to upload your reply to the comments as a separate file. All the values filled in on original submission are displayed again. The ID number of the paper will be appended ‘.R1’.

7.2. *Provisional acceptance*

If the paper is accepted as suitable for publication you will be sent a provisional acceptance decision. This enables you to upload the final files required for production: (1) the final PDF or Word version of the paper, designated as a ‘main document’; (2) any source files (see section 5) which must be designated as ‘production (not for review)’ and uploaded as a single .zip or .tar file.

In the decision email a link to the transfer of copyright form will also be sent, and this form can either be uploaded with the files mentioned above, or can be sent separately. No paper can be published without a completed transfer of copyright form.

Please note JPP standard procedure is for authors to assign copyright to Cambridge

University Press. For research funded by bodies which insist on retention of copyright (for example EURATOM), we can provide an alternative grant of licence form.

7.3. Acceptance

On receipt of the production files you will be sent an email indicating completion of the acceptance process.

8. Publication process

Once a paper has been accepted for publication and the source files have been uploaded, the manuscript will be sent to Cambridge University Press for copyediting and typesetting, and will be assigned a digital object identifier (doi). When the proof is ready, authors will receive an email alert containing a link to the PDF of the proof, and instructions for its correction and return. It is imperative that authors check their proofs closely, particularly the equations and figures, which should be checked against the accepted file, as the production schedule does not allow for corrections at a later stage. Your JPP article will be published straight into an issue online as soon as it is ready. The PDF published online is the Version of Record and no further alterations/corrections to this document will be allowed.

9. Gold Open Access

You will have the option to publish your article as Gold Open Access, enabling the final published version to be made freely available under a Creative Commons license. You might be required to pay an Article Processing Charge (APC) for Gold Open Access. You may be eligible for a waiver or discount, for example if your institution is part of a Read and Publish sales agreement with Cambridge University Press. For more information about your Open Access options, please see here: <https://www.cambridge.org/core/services/open-access-policies/introduction-to-open-access>

10. Obtaining help

Technical support for the online submission system is available by clicking on the ‘Get Help Now’ link at the top-right corner of each page of the submission site. Any other questions relating to the submission or publication process should be directed to the JPP Editorial Assistant, Mrs Amanda Johns, at plaeditorial@cambridge.org.

11. Notation and style

Generally any queries concerning notation and journal style can be answered by viewing recent pages in the Journal. However, the following guide provides the key points to note. It is expected that Journal style will be followed, and authors should take care to define all variables or entities upon first use. Also note that footnotes are not normally accepted.

11.1. *Mathematical notation*

11.1.1. *Setting variables, functions, vectors, matrices etc*

Italic font should be used for denoting variables, with multiple-letter symbols avoided except in the case of dimensionless numbers.

Upright Roman font (or upright Greek where appropriate) should be used for:

Operators: \sin , \log , d , Δ , e etc.

Constants: i ($\sqrt{-1}$), π (defined as `\upi`), etc.

Functions: Ai , Bi (Airy functions, defined as `\Ai` and `\Bi`), Re (real part, defined as `\Real`), Im (imaginary part, defined as `\Imag`), etc.

Physical units: cm , s , etc

Abbreviations: c.c. (complex conjugate), h.o.t. (higher-order terms), DNS, etc.

Bold italic font (or bold sloping Greek) should be used for:

Vectors (with the centred dot for a scalar product also in bold): $\mathbf{i} \cdot \mathbf{j}$

Bold sloping sans serif font, defined by the `\mathsfbfi` macro, should be used for:

Tensors and matrices: \mathbf{D}

Script font (for example \mathcal{G} , \mathcal{R}) can be used as an alternative to italic when the same letter denotes a different quantity (use `\mathcal` in L^AT_EX)

The product symbol (\times) should only be used to denote multiplication where an equation is broken over more than one line, to denote a cross product, or between numbers (the \cdot symbol should not be used, except to denote a scalar product specifically).

11.1.2. Other symbols

A centred point should be used only for the scalar product of vectors. Large numbers that are not scientific powers should not include commas, but have the form 1600 or 16 000 or 160 000. Use O to denote ‘of the order of’, not the L^AT_EX \mathcal{O} .

12. Citations and references

All papers included in the References section must be cited in the article, and vice versa. Citations should be included as, for example “It has been shown (Rogallo 1981) that...” (using the `\citep` command, part of the `natbib` package) “recent work by Dennis (1985)...” (using `\citet`). The `natbib` package can be used to generate citation variations, as shown below.

`\citet[pp. 2-4]{Galtier00}`:

Galtier *et al.* (2000, pp. 479-480)

`\citep[p. 6]{Worster92}`:

(Worster 1992, p. 6)

`\citep[see][]{Koch83, Lee71, Linton92}`:

(see Koch 1983; Lee 1971; Linton & Evans 1992)

`\citep[see][p. 18]{Martin80}`:

(see Martin 1980, p. 18)

`\citep{Brownell104, Brownell107, Ursell150, Wijngaarden68, Miller91}`:

(Brownell & Su 2004, 2007; Ursell 1950; van Wijngaarden 1968; Miller 1991)

The References section can either be built from individual `\bibitem` commands, or can be built using BibTeX. The BibTeX files used to generate the references in this document can be found in the zip file in the Instructions for Contributors section of the JPP website.

Where there are up to ten authors, all authors’ names should be given in the reference list. Where there are more than ten authors, only the first name should appear, followed by *et al.*

Acknowledgements should be included at the end of the paper, before the References

section or any appendices, and should be a separate paragraph without a heading. Several anonymous individuals are thanked for contributions to these instructions.

Appendix A.

This appendix contains sample equations in the JPP style. Please refer to the L^AT_EX source file for examples of how to display such equations in your manuscript.

$$(\nabla^2 + k^2)G_s = (\nabla^2 + k^2)G_a = 0 \quad (\text{A } 1)$$

$$\nabla \cdot \mathbf{v} = 0, \quad \nabla^2 P = \nabla \cdot (\mathbf{v} \times \mathbf{w}). \quad (\text{A } 2)$$

$$G_s, G_a \sim 1/(2\pi) \ln r \quad \text{as} \quad r \equiv |P - Q| \rightarrow 0, \quad (\text{A } 3)$$

$$\left. \begin{array}{l} \frac{\partial G_s}{\partial y} = 0 \quad \text{on} \quad y = 0, \\ G_a = 0 \quad \text{on} \quad y = 0, \end{array} \right\} \quad (\text{A } 4)$$

$$-\frac{1}{2\pi} \int_0^\infty \gamma^{-1} [\exp(-k\gamma|y-\eta|) + \exp(-k\gamma(2d-y-\eta))] \cos k(x-\xi) t dt, \quad 0 < y, \quad \eta < d, \quad (\text{A } 5)$$

$$\gamma(t) = \begin{cases} -i(1-t^2)^{1/2}, & t \leq 1 \\ (t^2-1)^{1/2}, & t > 1. \end{cases} \quad (\text{A } 6)$$

$$-\frac{1}{2\pi} \int_0^\infty B(t) \frac{\cosh k\gamma(d-y)}{\gamma \sinh k\gamma d} \cos k(x-\xi) t dt$$

$$G = -\frac{1}{4}i(H_0(kr) + H_0(kr_1)) - \frac{1}{\pi} \int_0^\infty \frac{e^{-k\gamma d}}{\gamma \sinh k\gamma d} \cosh k\gamma(d-y) \cosh k\gamma(d-\eta) \quad (\text{A } 7)$$

Note that when equations are included in definitions, it may be suitable to render them in line, rather than in the equation environment: $\mathbf{n}_q = (-y'(\theta), x'(\theta))/w(\theta)$. Now $G_a = \frac{1}{4}Y_0(kr) + \widetilde{G}_a$ where $r = \{[x(\theta) - x(\psi)]^2 + [y(\theta) - y(\psi)]^2\}^{1/2}$ and \widetilde{G}_a is regular as $kr \rightarrow 0$. However, any fractions displayed like this, other than $\frac{1}{2}$ or $\frac{1}{4}$, must be written on the line, and not stacked (ie 1/3).

$$\begin{aligned} \frac{\partial}{\partial n_q} \left(\frac{1}{4}Y_0(kr) \right) &\sim \frac{1}{4\pi w^3(\theta)} [x''(\theta)y'(\theta) - y''(\theta)x'(\theta)] \\ &= \frac{1}{4\pi w^3(\theta)} [\rho'(\theta)\rho''(\theta) - \rho^2(\theta) - 2\rho'^2(\theta)] \quad \text{as} \quad kr \rightarrow 0. \end{aligned} \quad (\text{A } 8)$$

$$\frac{1}{2}\phi_i = \frac{\pi}{M} \sum_{j=1}^M \phi_j K_{ij}^a w_j, \quad i = 1, \dots, M, \quad (\text{A } 9)$$

where

$$K_{ij}^a = \begin{cases} \partial G_a(\theta_i, \theta_j)/\partial n_q, & i \neq j \\ \partial \widetilde{G}_a(\theta_i, \theta_i)/\partial n_q + [\rho'_i \rho''_i - \rho_i^2 - 2\rho_i'^2]/4\pi w_i^3, & i = j. \end{cases} \quad (\text{A } 10)$$

$$\rho_l = \lim_{\zeta \rightarrow Z_l^-(x)} \rho(x, \zeta), \quad \rho_u = \lim_{\zeta \rightarrow Z_u^+(x)} \rho(x, \zeta) \quad (\text{A } 11 \text{ a, b})$$

$$(\rho(x, \zeta), \phi_{\zeta\zeta}(x, \zeta)) = (\rho_0, N_0) \quad \text{for} \quad Z_l(x) < \zeta < Z_u(x). \quad (\text{A } 12)$$

$$\tau_{ij} = (\overline{u_i u_j} - \bar{u}_i \bar{u}_j) + \overline{u_i u_j^{SGS}} + \overline{u_i^{SGS} u_j} + \overline{u_i^{SGS} u_j^{SGS}}, \quad (\text{A } 13 \text{ a})$$

$$\tau_j^\theta = (\overline{u_j \theta} - \bar{u}_j \bar{\theta}) + \overline{u_j \theta^{SGS}} + \overline{u_j^{SGS} \theta} + \overline{u_j^{SGS} \theta^{SGS}}. \quad (\text{A } 13 \text{ b})$$

$$\mathbf{Q}_C = \begin{bmatrix} -\omega^{-2} V'_w & -(\alpha^t \omega)^{-1} & 0 & 0 & 0 \\ \frac{\beta}{\alpha \omega^2} V'_w & 0 & 0 & 0 & i\omega^{-1} \\ i\omega^{-1} & 0 & 0 & 0 & 0 \\ iR_\delta^{-1}(\alpha^t + \omega^{-1} V''_w) & 0 & -(i\alpha^t R_\delta)^{-1} & 0 & 0 \\ \frac{i\beta}{\alpha \omega} R_\delta^{-1} V''_w & 0 & 0 & 0 & 0 \\ (i\alpha^t)^{-1} V'_w & (3R_\delta^{-1} + c^t(i\alpha^t)^{-1}) & 0 & -(\alpha^t)^{-2} R_\delta^{-1} & 0 \end{bmatrix}. \quad (\text{A } 14)$$

$$\boldsymbol{\eta}^t = \hat{\boldsymbol{\eta}}^t \exp[i(\alpha^t x_1^t - \omega t)], \quad (\text{A } 15)$$

where $\hat{\boldsymbol{\eta}}^t = \mathbf{b} \exp(i\gamma x_3^t)$.

$$\text{Det}[\rho \omega^2 \delta_{ps} - C_{pqrs}^t k_q^t k_r^t] = 0, \quad (\text{A } 16)$$

$$\langle k_1^t, k_2^t, k_3^t \rangle = \langle \alpha^t, 0, \gamma \rangle \quad (\text{A } 17)$$

$$\mathbf{f}(\theta, \psi) = (g(\psi) \cos \theta, g(\psi) \sin \theta, f(\psi)). \quad (\text{A } 18)$$

$$f(\psi_1) = \frac{3b}{\pi[2(a + b \cos \psi_1)]^{3/2}} \int_0^{2\pi} \frac{(\sin \psi_1 - \sin \psi)(a + b \cos \psi)^{1/2}}{[1 - \cos(\psi_1 - \psi)](2 + \alpha)^{1/2}} dx, \quad (\text{A } 19)$$

$$\begin{aligned} g(\psi_1) = & \frac{3}{\pi[2(a + b \cos \psi_1)]^{3/2}} \int_0^{2\pi} \left(\frac{a + b \cos \psi}{2 + \alpha} \right)^{1/2} \left\{ f(\psi)[(\cos \psi_1 - b\beta_1)S + \beta_1 P] \right. \\ & \times \frac{\sin \psi_1 - \sin \psi}{1 - \cos(\psi_1 - \psi)} + g(\psi) \left[\left(2 + \alpha - \frac{(\sin \psi_1 - \sin \psi)^2}{1 - \cos(\psi - \psi_1)} - b^2 \gamma \right) S \right. \\ & \left. \left. + \left(b^2 \cos \psi_1 \gamma - \frac{a}{b} \alpha \right) F\left(\frac{1}{2}\pi, \delta\right) - (2 + \alpha) \cos \psi_1 E\left(\frac{1}{2}\pi, \delta\right) \right] \right\} d\psi, \end{aligned} \quad (\text{A } 20)$$

$$\alpha = \alpha(\psi, \psi_1) = \frac{b^2[1 - \cos(\psi - \psi_1)]}{(a + b \cos \psi)(a + b \cos \psi_1)}, \quad \beta - \beta(\psi, \psi_1) = \frac{1 - \cos(\psi - \psi_1)}{a + b \cos \psi}. \quad (\text{A } 21)$$

$$\left. \begin{aligned} H(0) &= \frac{\epsilon \bar{C}_v}{\tilde{v}_T^{1/2} (1 - \beta)}, & H'(0) &= -1 + \epsilon^{2/3} \bar{C}_u + \epsilon \hat{C}'_u; \\ H''(0) &= \frac{\epsilon u_*^2}{\tilde{v}_T^{1/2} u_P^2}, & H'(\infty) &= 0. \end{aligned} \right\} \quad (\text{A } 22)$$

LEMMA 1.

Let $f(z)$ be a trial Batchelor (1971, pp. 231–232) function defined on $[0, 1]$. Let Λ_1 denote the ground-state eigenvalue for $-d^2g/dz^2 = \Lambda g$, where g must satisfy $\pm dg/dz + \alpha g = 0$ at $z = 0, 1$ for some non-negative constant α . Then for any f that is not identically zero we have

$$\frac{\alpha(f^2(0) + f^2(1)) + \int_0^1 \left(\frac{df}{dz}\right)^2 dz}{\int_0^1 f^2 dz} \geq \Lambda_1 \geq \left(\frac{-\alpha + (\alpha^2 + 8\pi^2\alpha)^{1/2}}{4\pi}\right)^2. \quad (\text{A } 23)$$

COROLLARY 1. Any non-zero trial function f which satisfies the boundary condition $f(0) = f(1) = 0$ always satisfies

$$\int_0^1 \left(\frac{df}{dz}\right)^2 dz. \quad (\text{A } 24)$$

REFERENCES

- BATCHELOR, G. K. 1971 Small-scale variation of convected quantities like temperature in turbulent fluid. part 1. general discussion and the case of small conductivity. *J. Fluid Mech.* **5**, 113–133.
- BROWNELL, C. J. & SU, L. K. 2004 Planar measurements of differential diffusion in turbulent jets. *AIAA Paper 2004-2335*.
- BROWNELL, C. J. & SU, L. K. 2007 Scale relations and spatial spectra in a differentially diffusing jet. *AIAA Paper 2007-1314*.
- DENNIS, S. C. R. 1985 Compact explicit finite difference approximations to the Navier–Stokes equation. In *Ninth Intl Conf. on Numerical Methods in Fluid Dynamics* (ed. Soubbaramayer & J. P. Boujot), *Lecture Notes in Physics*, vol. 218, pp. 23–51. Springer.
- GALTIER, S., NAZARENKO, S., NEWELL, A. & POUQUET, A. 2000 A weak turbulence theory for incompressible magnetohydrodynamics. *J. Plasma Phys.* **63** (5), 447–488.
- KOCH, W. 1983 Resonant acoustic frequencies of flat plate cascades. *J. Sound Vib.* **88**, 233–242.
- LEE, J.-J. 1971 Wave-induced oscillations in harbours of arbitrary geometry. *J. Fluid Mech.* **45**, 375–394.
- LINTON, C. M. & EVANS, D. V. 1992 The radiation and scattering of surface waves by a vertical circular cylinder in a channel. *Phil. Trans. R. Soc. Lond.* **338**, 325–357.
- MARTIN, P. A. 1980 On the null-field equations for the exterior problems of acoustics. *Q. J. Mech. Appl. Maths* **33**, 385–396.
- MILLER, P. L. 1991 Mixing in high schmidt number turbulent jets. PhD thesis, California Institute of Technology.
- ROGALLO, R. S. 1981 Numerical experiments in homogeneous turbulence. *Tech. Rep.* 81835. NASA Tech. Mem.
- URSELL, F. 1950 Surface waves on deep water in the presence of a submerged cylinder i. *Proc. Camb. Phil. Soc.* **46**, 141–152.
- VAN WIJNGAARDEN, L. 1968 On the oscillations near and at resonance in open pipes. *J. Engng Maths* **2**, 225–240.

- WORSTER, M. G. 1992 The dynamics of mushy layers. In *In Interactive dynamics of convection and solidification* (ed. S. H. Davis, H. E. Huppert, W. Muller & M. G. Worster), pp. 113–138. Kluwer.