

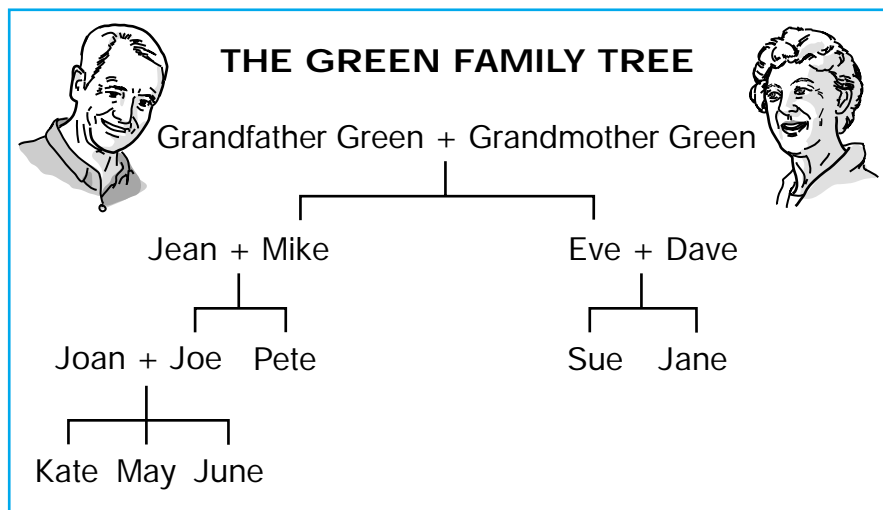
# 4 *The One Vowel Rule* *Linking with N*

What does “less” mean?  
How do you say L - E - A - S - E?



## **A** *The Green family and the Two Vowel Rule*

1 This is a family tree. Listen to the names.



2 In the Green family, all the names follow the Two Vowel Rule.

### *The Two Vowel Rule*

When there are two vowel letters in a syllable:

1. The first vowel says its alphabet name.
2. The second vowel is silent.

This rule is true for many words.

remain	repeat	arrive	soapy	excuse
Jane	Jean	Mike	Joe	Sue

## B Pair work: Questions about the Green family

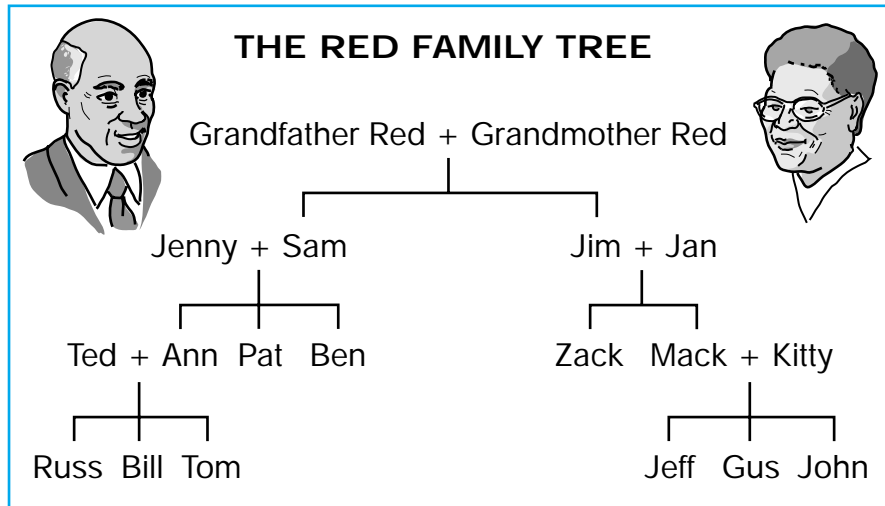
Ask each other questions about the Green family.  
Write your answers.

1. Who is Joe's brother? ..... *Pete* .....
2. Who is Jane's sister? .....
3. Who is Eve's mother? .....
4. Who is May's father? .....
5. Who is Grandmother Green's son? .....
6. Who are Kate's sisters? .....
7. Who is Dave's wife? .....
8. Who are Jean's sons? .....



## C The Red family and the One Vowel Rule

1 This is the Red family. Listen.



2 In the Red family, all the names follow the One Vowel Rule.

### *The One Vowel Rule*

When there is only one vowel letter in a syllable:

1. The vowel letter does NOT say its alphabet name.
2. The vowel letter says its RELATIVE sound.

This rule is true for many words.

can	pencil	finger	hot	summer
Mack	Jenny	Kitty	John	Russ



## D Words with relative vowel sounds

---

Listen.

A	E	I	O	U
Pat	Ben	Jim	Tom	Gus
hat	bed	his	hot	bus
Zack	pen	Bill	pot	sun
thanks	pencil	finish	John	sunny
Sam	Betty	Kitty	Johnny	supper



## E Alphabet vowels and relative vowels

---

Alphabet vowels say their names. Relative vowels have a different sound.

1 These names have alphabet vowel sounds. Listen.

A <sup>y</sup>	E <sup>y</sup>	I <sup>y</sup>	O <sup>w</sup>	U <sup>w</sup>
Jane	Jean	Mike	Joe	June

2 These names have relative vowel sounds. Listen.

A	E	I	O	U
Jan	Jen	Bill	Tom	Gus



## F Which word is different?

---

1 Listen to three words. One word is different. Mark it.

	X	Y	Z	
1.	.....	..... ✓	.....	(mate, mat, mate)
2.	.....	.....	.....	
3.	.....	.....	.....	
4.	.....	.....	.....	
5.	.....	.....	.....	
6.	.....	.....	.....	
7.	.....	.....	.....	

2 Listen again.



## G Listening to vowel sounds

Listen. Point to each word as you hear it.

<b>A<sup>y</sup></b> Kate Jane ate same	<b>A</b> cat Jan at Sam	<b>E<sup>y</sup></b> teen Jean meat seat	<b>E</b> ten Jen met set	<b>I<sup>y</sup></b> ice file time bite	<b>I</b> is fill Tim bit	<b>O<sup>w</sup></b> load Joan hope coat	<b>O</b> lot John hop cot	<b>U<sup>w</sup></b> cute cube rule tube	<b>U</b> cut cub run tub
---	-------------------------------------	--	--------------------------------------	---	--------------------------------------	--	---------------------------------------	--	--------------------------------------



## H Which vowel sound do you hear?

1 Listen. Some words have alphabet vowel sounds and some have relative vowel sounds.

cute	teen	rule	ride	pine	lease
made	road	main	cube	ice	coast
hop	shake	less	mad	rod	man
cheese	fun	chess	cub	shack	ten
rid	cut	hot	is	hope	pin

2 Write the words in the correct boxes. Each box has three words.

<b>A<sup>y</sup></b> <i>made</i>	<b>E<sup>y</sup></b> <i>cheese</i>	<b>I<sup>y</sup></b>	<b>O<sup>w</sup></b>	<b>U<sup>w</sup></b> <i>cute</i>
<b>A</b>	<b>E</b>	<b>I</b> <i>rid</i>	<b>O</b> <i>hop</i>	<b>U</b>

3 Check your answers with the class.



## I Music of English

Listen. Say each sentence two times.

What does “less” mean?

How do you say L - E - A - S - E?

## J Pair work: How do you say L-E-S-S?

- 1 Student A, ask question **a** or **b**.
- 2 Student B, answer the question.
- 3 Take turns asking questions.

### Examples

Student A: What does “less” mean?

Student B: Not as much.

Student B: How do you say S - H - A - K - E?

Student A: Shake.

- |   |   |
|---|---|
| 1. a. What does “lease” mean?<br>b. What does “less” mean?                            | To rent, usually for a year.<br>Not as much.        |
| 2. a. How do you say<br>S - H - A - C - K?<br>b. How do you say<br>S - H - A - K - E? | Shack.<br>Shake.                                    |
| 3. a. What does “shake” mean?<br>b. What does “shack” mean?                           | A drink made of<br>ice cream.<br>A very poor house. |



4. a. How do you say  
L - E - A - S - E? Lease.  
b. How do you say  
L - E - S - S? Less.
5. a. How do you spell “wheel”? W - H - E - E - L.  
b. How do you spell “well”? W - E - L - L.
6. a. How do you say I - C - E? Ice.  
b. How do you say I - S? Is.
7. a. How do you spell “while”? W - H - I - L - E.  
b. How do you spell “will”? W - I - L - L.
8. a. What does “main” mean? The most important.  
b. What does “man” mean? A male person.
9. a. How do you say  
C - H - E - S - S? Chess.  
b. How do you say  
C - H - E - E - S - E? Cheese.
10. a. What does “made” mean? The past of “make.”  
b. What does “mad” mean? Angry.



## **K** *Linking with the sound N*

Many words are linked together.

- 1 The sound N links to a vowel sound at the beginning of the next word. Listen.

Dan is. **Dannnis** .

an apple **annapple**

- 2 The sound N links to another N sound at the beginning of the next word. Listen.

John knows. **Johnnnknows** .

ten names **tennnnames**



## L More linking with N

Listen. Say each sentence two times. Remember to link **N** to the sound at the beginning of the next word.

- |                            |                          |
|----------------------------|--------------------------|
| 1. Dan is here.            | Dannnis here.            |
| 2. Ken asks questions.     | Kennnasks questions.     |
| 3. Jan and I will go.      | Jannnand I will go.      |
| 4. Joan always goes.       | Joannalways goes.        |
| 5. Jean never goes.        | Jeannnever goes.         |
| 6. John knows everything.  | Johnnknows everything.   |
| 7. This is an ice cube.    | This is annnice cube.    |
| 8. I want an apple.        | I want annnapple .       |
| 9. The list has ten names. | The list has tennnames . |
| 10. Have you seen Nancy?   | Have you seennNancy ?    |

## M Review: Names of the alphabet letters

Say the names of the letters in each group. The letter names in each group have the same vowel sound. Read down.

A <sup>y</sup> cake	E <sup>y</sup> tea	E ten	I <sup>y</sup> ice	O <sup>w</sup> cone	U <sup>w</sup> cube
A	B	F	I	O	U
H	C	L	Y		Q
J	D	M			W
K	E	N			
	G	S			
	P	X			
	T				
	V				
	Z				

**R** does not belong in any of these groups. It is pronounced like the word “are.”